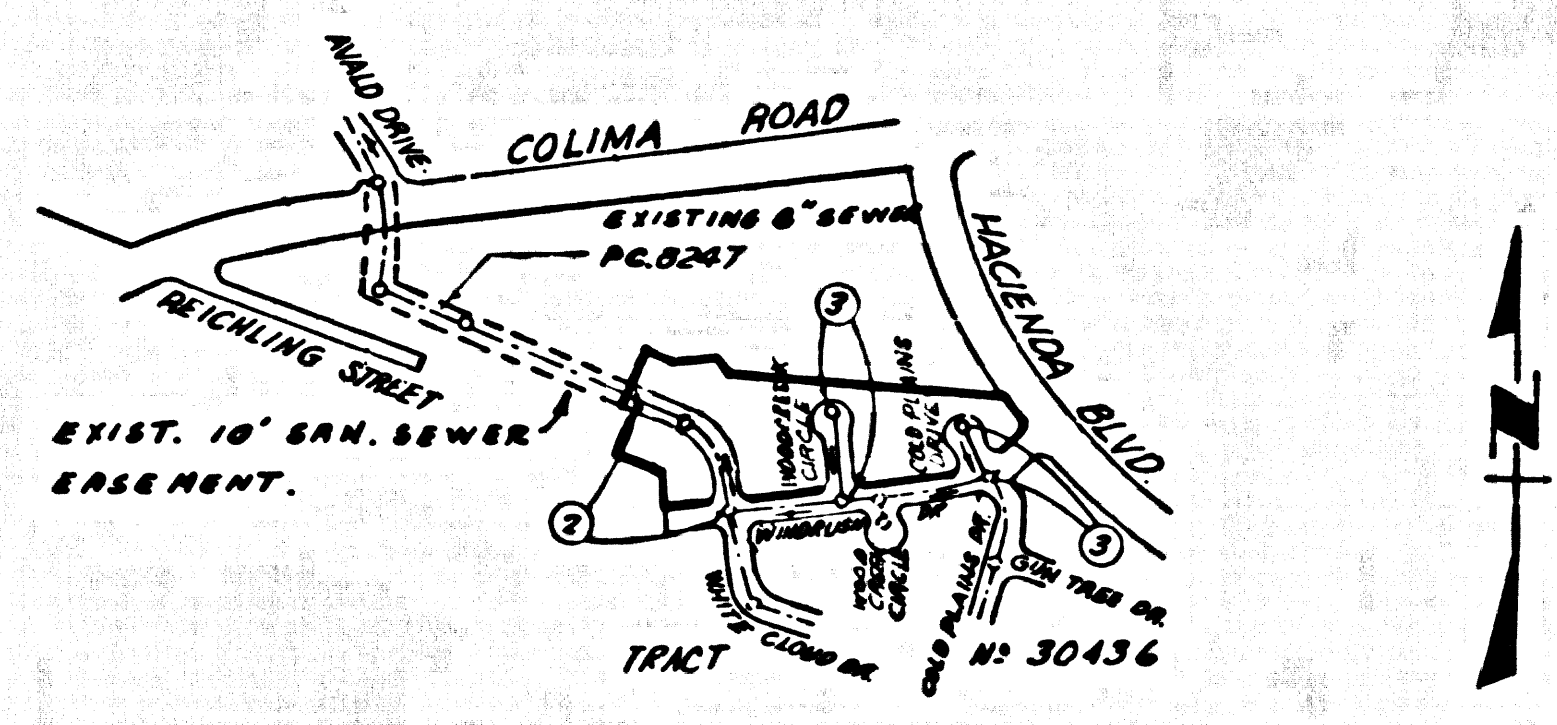


B.M. 8C 1706 ELEV. 552.190
 LET S. CURB 22 FT. W. OF B.C.R. @ SW CORNER
 HACIENDA BOULEVARD & COLIMA RD. 42 FTS.
 AND 37 FT. W. INTERSECTION
 OTTERBIEN QUAD. 1965



INDEX MAP
 TRACT NO. 31040
 P.C. 8423
 SCALE 1"=500'

NOTE: NUMBERS IN CIRCLES INDICATE PAGE NUMBERS.

PRIVATE ENGINEER'S
 NOTICE TO CONTRACTOR
 THE EXISTENCE AND LOCATION OF ANY UNDERGROUND UTILITY PIPES OR STRUCTURES SHOWN ON THESE PLANS ARE OBTAINED BY A SEARCH OF THE AVAILABLE RECORDS TO THE BEST OF OUR KNOWLEDGE THERE ARE NO EXISTING UTILITIES EXCEPT AS SHOWN ON THIS MAP. THE CONTRACTOR IS REQUIRED TO TAKE PRECAUTIONARY MEASURES TO PROTECT THE UTILITY LINES SHOWN AND ANY OTHER LINES NOT OF RECORD OR NOT SHOWN ON THIS DRAWING.

ISSUE NO HOUSE CONNECTION PERMITS UNTIL P.C. 8247 IS ACCEPTED.

LOTS 5, 6, 7, 13 & 14 ARE SERVED BY P.C. 8247

COLLECT CHARGES AS INDICATED

LA PUENTE BLDG. DIST. NO. 2

PROFILE, ALIGNMENT AND GRADE OF
 SANITARY SEWERS P.C. 8423
 CONSTRUCTED IN PAGE 1

TRACT NO. 31040
 PRIVATE CONTRACT NO. 8423

W.S. 38-14
 2 SHEETS; 3 PAGES

SCALE: VERT. 1"=4' HORIZ. 1"=40' SEPTEMBER, 1965

PREPARED IN THE OFFICES OF
 ERVIN ENGINEERING
 725 S. PARK VIEW ST., LOS ANGELES, CALIF. 90007
 BY: Fred J. Ervin
 REG. C. E. NO. 1282

- NOTES:
- HOUSE LATERALS TO BE CONSTRUCTED WITH INVERTS AT PROPERTY LINE 6 FEET BELOW CURB GRADE EXCEPT AS NOTED.
 - PROVIDE STAKES ON THE PROPERTY LINE OR PRIVATE LINES PRODUCED AT RIGHT ANGLES TO THE SEWER LINE AT THE CENTER LINE OF EACH MANHOLE.
 - NO REPRESENTATIVE OF THE COUNTY ENGINEER WILL SURVEY OR LAY OUT ANY PORTION OF THE WORK.
 - THE PRIVATE ENGINEER SHALL FURNISH THE COUNTY ENGINEER WITH GRADE SHEETS AND STATIONING FOR ALL HOUSE LATERALS AND "T" OR "T" BRANCHES AND SHALL PROVIDE STAKES FOR THEM AT THEIR PROPER LOCATIONS WITH STATIONING PLAINLY MARKED. ALL HOUSE LATERALS SHALL BE CONSTRUCTED IN A STRAIGHT ALIGNMENT AT RIGHT ANGLES FROM THE MAIN LINE SEWER EXCEPT AS SHOWN ON THE PLANS. HOUSE LATERALS FROM CHIMNEYS SHALL NOT HAVE AN ANGLE OF LESS THAN 45° WITH THE MAIN LINE SEWER. ANY CHANGE IN ALIGNMENT SHALL BE REQUESTED IN WRITING BY THE PRIVATE ENGINEER.
 - THE PRIVATE ENGINEER SHALL FURNISH THE HOUSE LATERAL "DEPTH" AT THE PROPERTY LINE BELOW THE TOP OF CURB ELEVATION FOR EACH HOUSE LATERAL ON THE GRADE SHEET.
 - NO REVISIONS SHALL BE MADE IN THESE PLANS WITHOUT THE APPROVAL OF THE COUNTY ENGINEER.
 - THE CONTRACTOR SHALL NOTIFY THE CONSTRUCTION DIVISION BY TELEPHONE, MADISON 9-2767, EXT. 81581, AT LEAST TWENTY-FOUR HOURS BEFORE STARTING ANY WORK UNDER THIS CONTRACT.
 - ALL STRUCTURES SHALL BE EITHER BRICK MANHOLES PER 5-3 OR PRECAST MANHOLES PER 5-3 OR 5-4, EXCEPT AS NOTED.
 - "T" OR "T" BRANCHES MAY BE USED FOR CONNECTIONS TO MAINLINE SEWERS EXCEPT AS NOTED.
 - MANHOLE TOPS IN UNIMPROVED RIGHTS OF WAY TO BE SIX INCHES ABOVE FINISHED GRADE.
 - USE EXTRA STRENGTH PIPE. ALL PIPE IS STANDARD DEPTH EXCEPT AS NOTED.
 - VITRIFIED CLAY PIPE JOINTS SHALL BE TYPE "B", "F", OR "G" PER STANDARD SPECIFICATIONS SECTION 306-2.
 - IF A POWER POLE IS WITHIN THREE FEET OF THE SEWER, THE SEWER SHALL BE ENCASED, PER 5-5, TWO FEET ON EACH SIDE FROM THE POINT OF INTERFERENCE.
 - IF DURING THE COURSE OF CONSTRUCTION IT IS DETERMINED THAT THERE IS LESS THAN FOUR FEET OF COVER OVER THE TOP OF MAIN LINE OR HOUSE LATERAL V.C.P. SEWER WHICH IS NOT INDICATED ON THE PLANS, THE PIPE SHALL BE ENCASED PER 5-5, UNLESS OTHERWISE APPROVED BY THE COUNTY ENGINEER.
 - RESURFACE ALL TRENCHES WITHIN PAVED AREAS TO MEET L.A. COUNTY ROAD DEPT. OR CALIFORNIA STATE HIGHWAY REQUIREMENTS IN ACCORDANCE WITH PERMITS.
 - SEWERS TO BE TESTED FOR LEAKAGE PER SECTION 306-2.3.7 OF THE STANDARD SPECIFICATIONS.
 - REFER TO SECTION 7-18.4.1 OF THE STANDARD SPECIFICATIONS, REGARDING SAFETY ORDEES.
 - ALL JOINTS BETWEEN CAST IRON PIPE AND VITRIFIED CLAY PIPE SHALL BE MADE WITH A RUBBER SLEEVE JOINT, TYPE "C" OR "D", TWENTY BUSHINGS IF NECESSARY PER STANDARD SPECIFICATIONS, SECTION 306-2.
- THE FOLLOWING LATEST REVISED STANDARD PLANS ON FILE IN THE OFFICE OF THE COUNTY ENGINEER SHALL APPLY IN THE CONSTRUCTION OF THIS PROJECT.

LEGEND	5-1
MINIMUM PUBLIC SAFETY REQUIREMENTS	5-2
BRICK MANHOLE	5-3
NON-REINFORCED PRECAST CONCRETE MANHOLE	5-4
REINFORCED PRECAST CONCRETE MANHOLE	5-5
MANHOLE FRAME AND COVER	5-6
STANDARD MANHOLE STEP	5-7
READING FOR SEWER PIPE	5-8
CHANGING AND ENCASING	5-9
WY OR ITS SUPPORT	5-10
ALLOWABLE TRENCH WIDTHS	5-11
HOW CONNECTION TO EXISTING MANHOLE	5-12

County Sanitation Districts shall be notified prior to the following so that required inspection can be made (Phone 237-1028 x 2000-8888)
 Acceptance of the project.

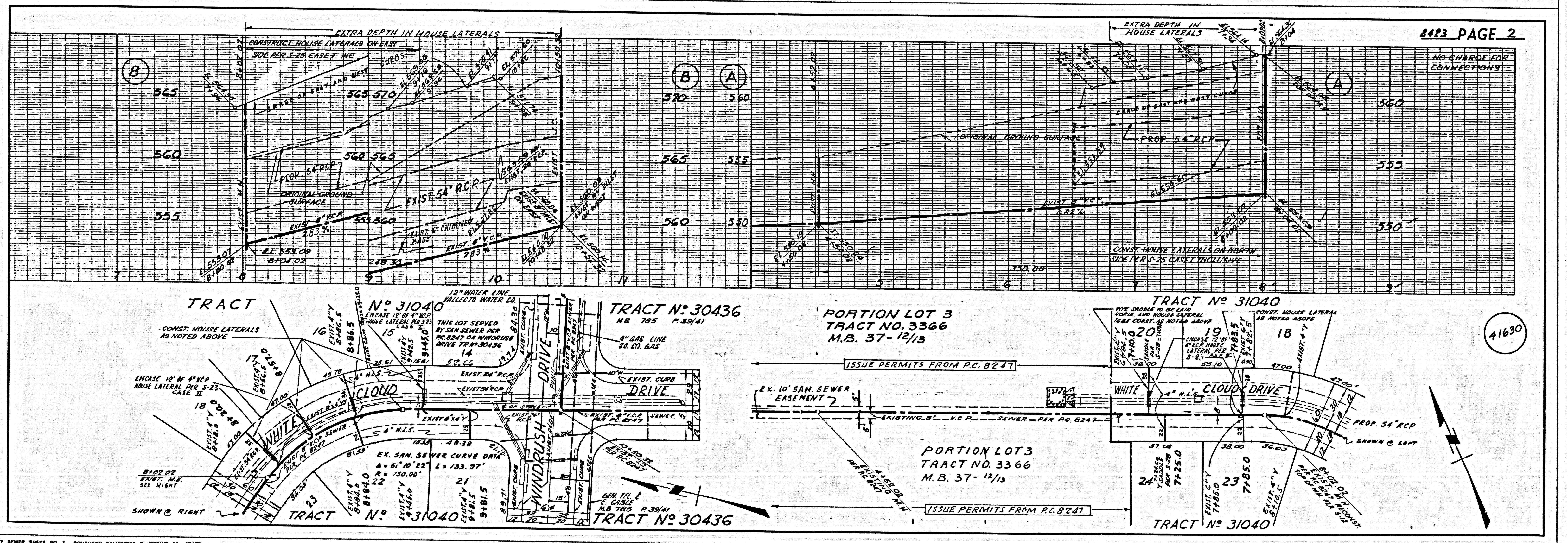
No connections for the disposal of industrial wastes shall be made to sewers shown on these plans without written permission from the Chief Engineer and General Manager of the County Sanitation Districts.

NOTE:
 GRADES TO WHICH THIS IMPROVEMENT IS TO BE CONSTRUCTED ARE SHOWN ON PLANS AND PROFILE. GRADE POINTS FOR TOP OF CURBS, CENTER LINE OF STREETS, OR CENTER LINE OF ALLEYS ARE SHOWN BY CIRCLES ON PROFILES. AT ALL POINTS BETWEEN DESIGNATED POINTS THE GRADE SHALL BE ESTABLISHED SO AS TO CONFORM TO A STRAIGHT LINE SHOWN BETWEEN SAID DESIGNATED POINTS. ELEVATIONS ARE IN FEET ABOVE U.S.C. & G.S. SEA LEVEL DATUM OF 1929.
 WORK SHALL BE CONSTRUCTED ACCORDING TO THE STANDARD SPECIFICATIONS FOR PUBLIC WORKS CONSTRUCTION (1967) LATEST EDITION AND SUPPLEMENTARY SPECIFICATIONS FOR PUBLIC WORKS CONSTRUCTION (1967) AND SHALL BE PROSECUTED ONLY IN THE PRESENCE OF THE COUNTY ENGINEER.
 BEFORE WORK CAN BE STARTED, THE CONTRACTOR MUST OBTAIN A PERMIT TO EXCAVATE IN COUNTY STREETS FROM THE L. A. COUNTY ROAD DEPT., DISTRICT OFFICE NO. 10 AND PAY A FEE TO THE COUNTY ENGINEER, ROOM 206 COUNTY ENGINEERING BUILDING, 108 WEST SECOND STREET OR, P.O. BOX 100, SAN JUAN, CALIF. REGIONAL OFFICE, SUFFICIENT TO COVER THE COST OF CONSTRUCTION INSPECTION AND RECORD PLANS.
 APPROVAL OF THE PLAN BY THE COUNTY OF LOS ANGELES DOES NOT CONSTITUTE A REPRESENTATION AS TO THE ACCURACY OF THE LOCATION OF OR THE EXISTENCE OR NON-EXISTENCE OF ANY UNDERGROUND UTILITY PIPE, OR STRUCTURE WITHIN THE LIMITS OF THIS PROJECT. THIS NOTE APPLIES TO ALL PAGES.
 IF WORK IS TO BE DONE IN A STATE HIGHWAY, A PERMIT MUST BE OBTAINED FROM THE STATE OF CALIFORNIA, DIVISION OF HIGHWAY, 138 SOUTH SPRING STREET, LOS ANGELES, CALIFORNIA.

COUNTY OF LOS ANGELES, CALIFORNIA
 JOHN A. LAMBIE, COUNTY ENGINEER J. D. PARKHURST, CHIEF ENGINEER
 APPROVED BY: [Signature] APPROVED BY: [Signature]
 REGIONAL ENGINEER OFFICE ENGINEER

CHECKED BY: [Signature] DATE: 9-5-65
 REG. C. E. NO. 9406

41629



8423 PAGE 2

41630

NO. CHARGE FOR CONNECTIONS

41631

