

B.M. BY 2379 ELEV. 62.969  
 F.C. BR. CAP. 5'S.S. ANGLE POINT WINGRAVE ST. W.  
 CORNER BRIDGE No. 774 ON ALAMEDA ST.  
 OVER COMPTON CREEK 28' W. & 6.00' S.  
 S. ARTESIA BLVD. M.P.D. (B.M. 44-33)  
 BASELINE QUAD. 19 63

- THE FOLLOWING STANDARD PLANS ON FILE IN THE OFFICE OF THE COUNTY ENGINEER SHALL APPLY IN THE CONSTRUCTION OF THIS PROJECT:
- LEGEND \_\_\_\_\_ S-1  
 MIN. EXCAVATION SAFETY REQUIREMENTS \_\_\_\_\_ S-2  
 BRICK MANHOLE \_\_\_\_\_ S-3  
 NON REINFORCED PRECAST CONCRETE MANHOLE \_\_\_\_\_ S-5  
 MANHOLE FRAME & COVER \_\_\_\_\_ S-15  
 MANHOLE STEP \_\_\_\_\_ S-17  
 BEDDING & SEWER PIPE \_\_\_\_\_ S-21  
 CRADLING ENCASEMENT \_\_\_\_\_ S-23  
 WYE & TEE SUPPORT \_\_\_\_\_ S-26  
 ALLOWABLE TRENCH WIDTH \_\_\_\_\_ S-33

DOMINGUEZ BLDG. DIST. NO. 13

PROFILE ALIGNMENT AND GRADE OF P.C. 8441  
 SANITARY SEWERS PAGE 1  
 TO BE CONSTRUCTED IN

VICTORIA STREET  
 P.M. 1362  
 PRIVATE CONTRACT NO. 8441

W.S. 30  
 1 SHEET, 2 PAGES  
 SCALE: HORIZ. 1" = 40' VERT. 1" = 4'

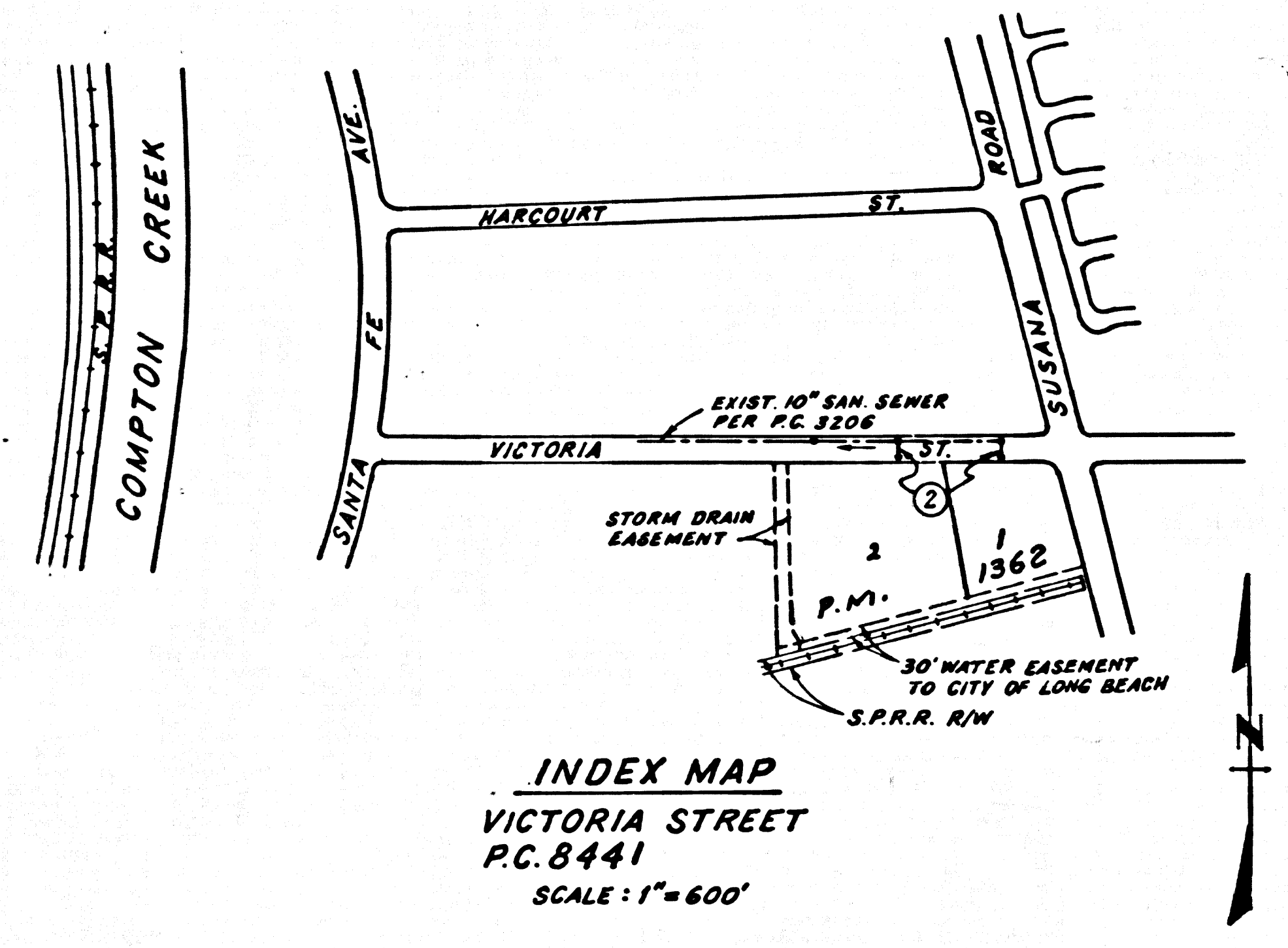
PREPARED IN THE OFFICES OF  
 E.L. PEARSON & ASSOCIATES  
 BY: *George R. Sank*  
 REG. C. E. NO. 13360

FOR LEGEND SEE PLAN NO. S-1

NOTES:  
 GRADES TO WHICH THIS IMPROVEMENT IS TO BE CONSTRUCTED ARE SHOWN ON PLANS AND PROFILES. GRADE POINTS FOR TOP OF CURBS, CENTER LINE OF STREETS, OR CENTER LINE OF ALLEYS ARE SHOWN BY CIRCLES ON PROFILES. AT ALL POINTS BETWEEN DESIGNATED POINTS THE GRADE SHALL BE ESTABLISHED SO AS TO CONFORM TO A STRAIGHT LINE DRAWN BETWEEN SAID DESIGNATED POINTS. ELEVATIONS ARE IN FEET ABOVE U.S.C. & G.S. SEA LEVEL DATUM OF 1929.  
 WHEN SHALL BE CONSTRUCTED ACCORDING TO THE STANDARD SPECIFICATIONS FOR PUBLIC WORKS CONSTRUCTION AND SPECIAL PROVISIONS FOR THE CONSTRUCTION OF SANITARY SEWERS DATED JAN. 2, 1969, AS REVISED, AND SHALL BE PROVIDED ONLY IN THE PRESENCE OF THE COUNTY ENGINEER.  
 BEFORE WORK CAN BE STARTED, THE CONTRACTOR MUST OBTAIN A PERMIT TO EXCAVATE IN COUNTY STREETS FROM THE L.A. COUNTY ROAD DEPT., DISTRICT OFFICE NO. 3 AND PAY A FEE TO THE COUNTY ENGINEER, ROOM 302, COUNTY ENGINEERING BUILDING, 108 WEST SECOND STREET OR PALMS BEACH SENTINELA PALMS REGIONAL OFFICE, SUFFICIENT TO COVER THE COST OF CONSTRUCTION INSPECTION AND RECORD PLANS.  
 APPROVAL OF THIS PLAN BY THE COUNTY OF LOS ANGELES DOES NOT CONSTITUTE A REPRESENTATION AS TO THE ACCURACY OF THE LOCATION OF OR THE EXISTENCE OR NON-EXISTENCE OF ANY UNDERGROUND UTILITY PIPE, OR STRUCTURE WITHIN THE LIMITS OF THIS PROJECT. THIS NOTE APPLIES TO ALL PAGES.  
 IF WORK IS TO BE DONE IN A STATE HIGHWAY, A PERMIT MUST BE OBTAINED FROM THE STATE OF CALIFORNIA, DIVISION OF HIGHWAYS, 126 SOUTH SPRING STREET, LOS ANGELES, CALIFORNIA.

COUNTY OF LOS ANGELES, CALIFORNIA  
 JOHN A. LAMBIE, COUNTY ENGINEER J. D. PARKHURST, CHIEF ENGINEER  
 CO. SAN. DIST. NO. 2  
 APPROVED BY: *Robert M. Allen* 2-18-70 REGIONAL ENGINEER APPROVED BY: *J. D. Parkhurst* OFFICE ENGINEER

CHECKED BY: *Donald Volante* 2/15/70  
 REG. C. E. NO. 15625



No connections for the disposal of industrial wastes shall be made to sewers shown on these drawings without written permission from the Chief Engineer and General Manager of the County Sanitation Districts.

County Sanitation Districts shall be notified prior to the following so that required inspection can be made (Phone 807-4444 - 626-3027)

Acceptance of the project.

COLLECT CHARGES AS INDICATED

NOTICE TO CONTRACTOR

The existence and location of any underground utility pipes or structures shown on these plans are obtained by a search of the available records to the best of my knowledge there are no existing utilities except as shown on these plans. The contractor is required to take due precautionary measures to protect the utility lines shown and any other lines not of record which may be shown on these plans.

*George R. Sank*  
 REG. C.E. NO. 13360

P.C. 8441 PAGE 2

NO CHARGE FOR CONNECTIONS

41663

