

B.M. BY 4384 ELEV. 1009.234
 CHIS SQ. E. EDGE CATCH BASIN 9 FT. ± S/O
 N. EDGE 44 FT. EAST @ HAWTHORNE
 BLVD. 0.65 MI. N. CREST ROAD
 PALOS VERDES QUAD. 19 65

DOUBLE SCALE
 LOMITA BLDG. DIST. NO. 12

PROFILE, ALIGNMENT AND GRADE OF
 SANITARY SEWERS P.C. 8444
 TO BE CONSTRUCTED IN PAGE 1

TRACT No 28450

PRIVATE CONTRACT NO. 8444

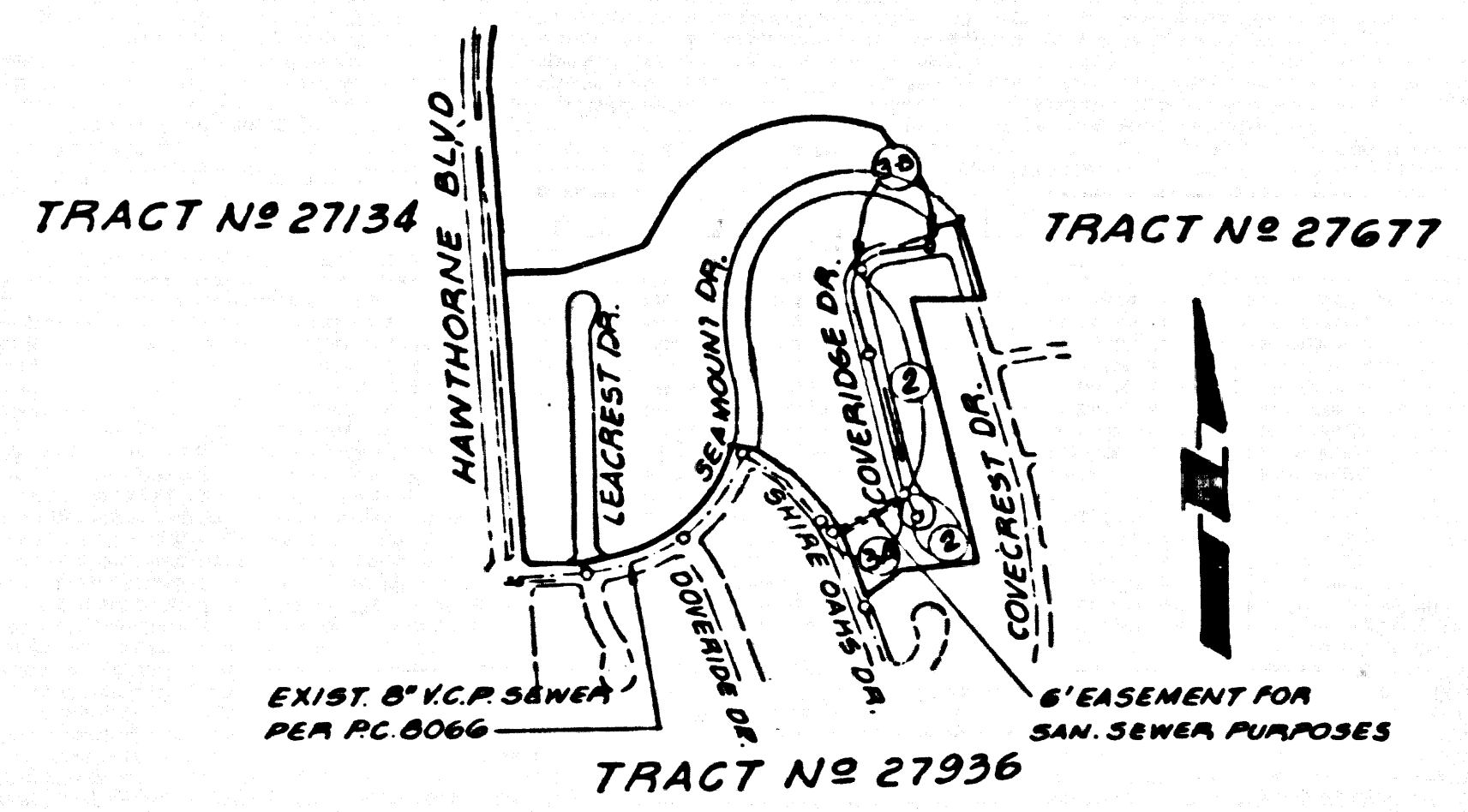
W.S. 27

2 SHEETS; 3 PAGES

SCALE: VERT. 1"=8'
 HORIZ. 1"=40'
 JAN. 1970
 PREPARED IN THE OFFICES OF

ERVIN ENGINEERING
 729 20th PARK VIEW ST. LOS ANGELES, CALIF. 90057
 By: *Ervin Engineering*
 REG. C. E. NO. 11932

RANCHO LOS PALOS VERDES
 PORTION OF LOT "H"



INDEX MAP
 TRACT No 28450
 P.C. 8444
 SCALE: 1"=600'

County Sanitation Districts shall be notified prior to the following so that required inspection can be made (Phone - 636-3097)

Acceptance of the project

No connections for the disposal of industrial wastes shall be made to sewers shown on these drawings without written permission from the Chief Engineer and General Manager of the County Sanitation Districts.

- NOTES:
- HOUSE LATERALS TO BE CONSTRUCTED WITH INVERTS AT PROPERTY LINE 4 FEET BELOW CURB GRADE EXCEPT AS NOTED.
 - PROVIDE STAKES ON THE PROPERTY LINE OR PROPERTY LINES PRODUCED AT RIGHT ANGLES TO THE SEWER LINE AT THE CENTER LINE OF EACH MANHOLE.
 - NO REPRESENTATIVE OF THE COUNTY ENGINEER WILL SURVEY OR LAY OUT ANY PORTION OF THE WORK.
 - THE PRIVATE ENGINEER SHALL FURNISH THE COUNTY ENGINEER WITH GRADE SHEETS AND ELEVATIONS FOR ALL HOUSE LATERALS AND "T" OR "T" BRANCHES AND SHALL PLUMB STAKES FOR THEM AT THEIR PROPER LOCATIONS WITH STATIONING PLAINLY MARKED. ALL HOUSE LATERALS SHALL BE CONSTRUCTED IN A STRAIGHT ALIGNMENT AT RIGHT ANGLES FROM THE MAIN LINE SEWER EXCEPT AS SHOWN ON THE PLANS. HOUSE LATERALS FROM CHIMNEYS SHALL NOT HAVE AN IN-24 OF LESS THAN 45" WITH THE MAIN LINE SEWER. ANY CHANGE IN ALIGNMENT SHALL BE REQUESTED BY WRITING BY THE PRIVATE ENGINEER.
 - THE PRIVATE ENGINEER SHALL FURNISH THE HOUSE LATERAL DEPTH AT THE PROPERTY LINE BELOW THE TOP OF CURB ELEVATION FOR EACH HOUSE LATERAL ON THE GRADE SHEET.
 - NO REVISIONS SHALL BE MADE IN THESE PLANS WITHOUT THE APPROVAL OF THE COUNTY ENGINEER.
 - THE CONTRACTOR SHALL NOTIFY THE CONSTRUCTION DIVISION BY TELEPHONE, MADISON 9-070, EXT. 11531, AT LEAST TWENTY-FOUR HOURS BEFORE STARTING ANY WORK UNDER THIS CONTRACT.
 - ALL STRUCTURES SHALL BE EITHER BRICK MANHOLES PER S-3 OR PRECAST CONCRETE MANHOLES PER S-3 ON S-4, EXCEPT AS NOTED.
 - "T" OR "T" BRANCHES MAY BE USED FOR CONNECTIONS TO MAINLINE SEWERS EXCEPT AS NOTED.
 - MANHOLE TOPS IN UNIMPROVED RIGHTS OF WAY TO BE 6 INCHES ABOVE FINISHED GRADE.
 - USE EXTRA STRENGTH PIPE. ALL PIPE IS STANDARD DEPTH EXCEPT AS NOTED.
 - VITRIFIED CLAY PIPE JOINTS SHALL BE TYPE "B", "T", OR "O" PER STANDARD SPECIFICATIONS SECTION 306.2.
 - IF A POWER POLE IS WITHIN THREE FEET OF THE SEWER, THE SEWER SHALL BE ENCASED, PER S-23, TWO FEET ON EACH SIDE FROM THE POINT OF INTERFERENCE.
 - IF DURING THE COURSE OF CONSTRUCTION IT IS DETERMINED THAT THERE IS LESS THAN FOUR FEET OF COVER OVER THE TOP OF A MAIN LINE OR HOUSE LATERAL V.C.P. SEWER WHICH IS NOT INDICATED ON THE PLANS, THE PIPE SHALL BE ENCASED PER S-23, UNLESS OTHERWISE APPROVED BY THE COUNTY ENGINEER.
 - RESURFACE ALL TRENCHES WITHIN PAVED AREAS TO MEET L.A. COUNTY ROAD DEPT. OR CALIFORNIA STATE HIGHWAY REQUIREMENTS IN ACCORDANCE WITH PERMITS.
 - SEWERS TO BE TESTED FOR LEAKAGE PER SECTION 304-237 OF THE STANDARD SPECIFICATIONS.
 - REFER TO SECTION 7-10.4.1 OF THE STANDARD SPECIFICATIONS, REGARDING SAFETY ORDERS.
 - ALL JOINTS BETWEEN CAST IRON PIPE AND VITRIFIED CLAY PIPE SHALL BE MADE WITH A RUBBER SLEEVE JOINT, TYPE "C" OR "B", WITH BUSHING IF NECESSARY PER STANDARD SPECIFICATIONS, SECTION 306.2.
- THE FOLLOWING LATEST REVISED STANDARD PLANS ON FILE IN THE OFFICE OF THE COUNTY ENGINEER SHALL APPLY IN THE CONSTRUCTION OF THIS PROJECT.

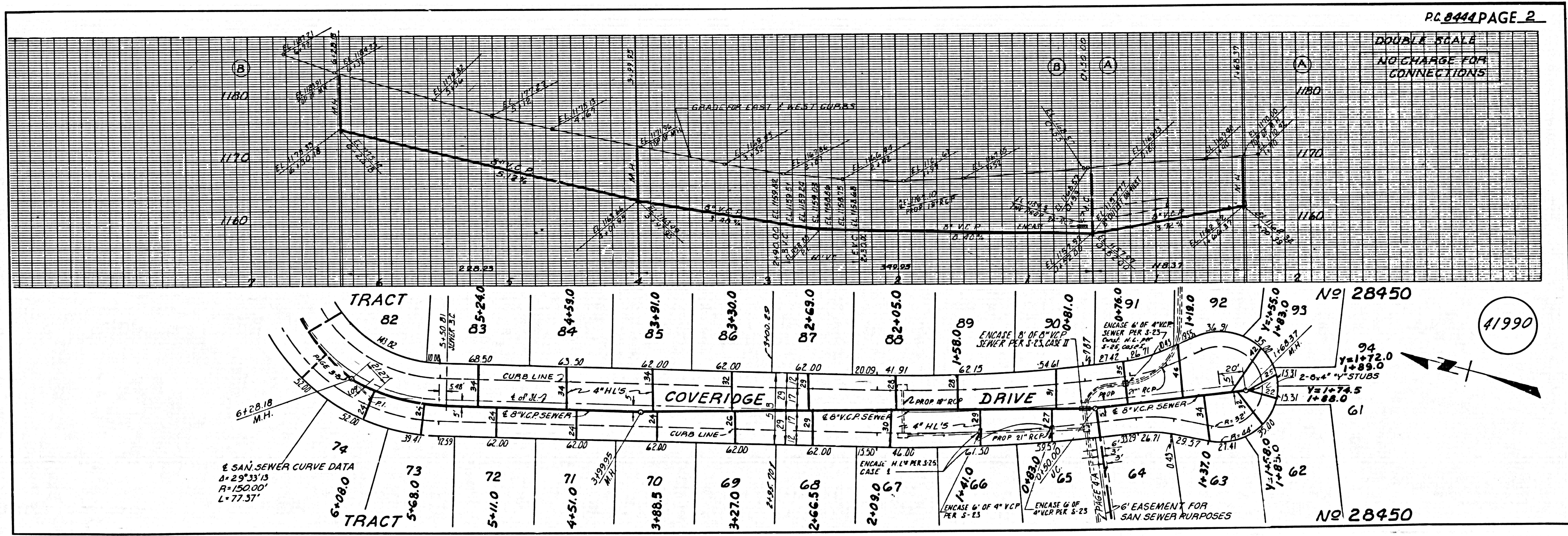
LEGEND	SECTION
MINIMUM PUBLIC SAFETY REQUIREMENTS	S-1
BRICK MANHOLE	S-3
NON-REINFORCED PRECAST CONCRETE MANHOLE	S-4
REINFORCED PRECAST CONCRETE MANHOLE	S-5
MANHOLE FRAME AND COVER	S-18
STANDARD MANHOLE STEP	S-17
BEDDING FOR SEWER PIPE	S-21
CHANGING AND ENCLOSURE	S-22
WYE OR TEE SUPPORT	S-24
ALLOWABLE TRENCH WIDTHS	S-23

19. SPECIAL BACKFILL IN DESIGNATED AREAS:
 (A) BACKFILL TRENCHES AND REPLACE OTHER GRASS REVEALED IN AS TO ACHIEVE THE METHOD OR FINISH SPECIFIED AND ACCEPTED BY THE COUNTY ENGINEER FOR THIS TRACT BY THE BUILDING AND SAFETY DIVISION.
 (B) ALL BACKFILLING SHALL BE COMPLETED TO A MINIMUM OF 90% OF ALLOWABLE DENSITY PER A.S.T.M. STANDARDS METHOD OF TEST D-1557. ALL ALLOWABLE ACCEPTABLE CERTIFICATION OF SUCH EXAMINATION SHALL BE SUBMITTED TO THE CONSTRUCTION DIVISION.

COLLECT CHARGES
 AS INDICATED

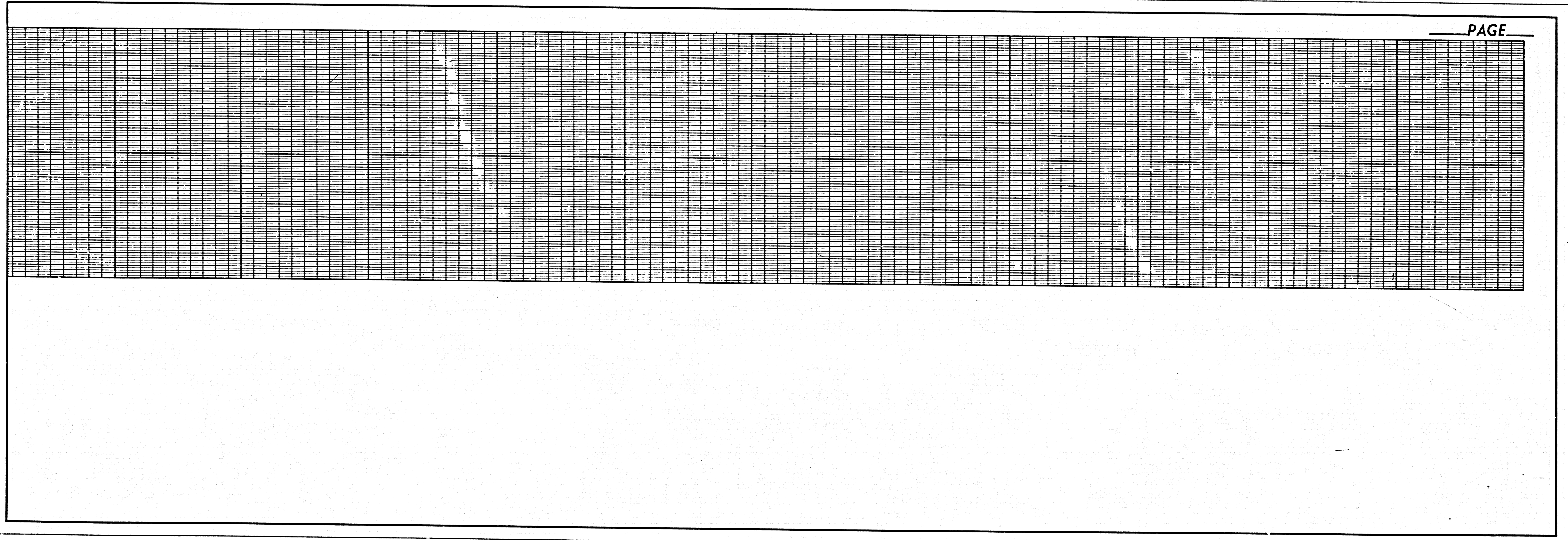
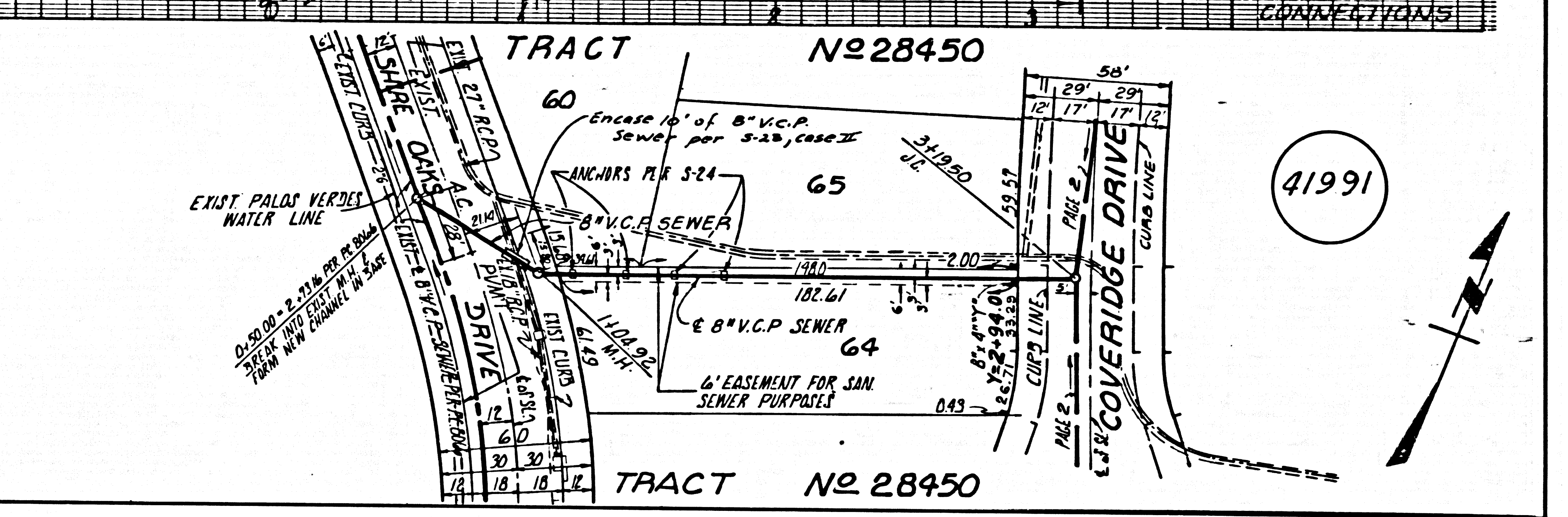
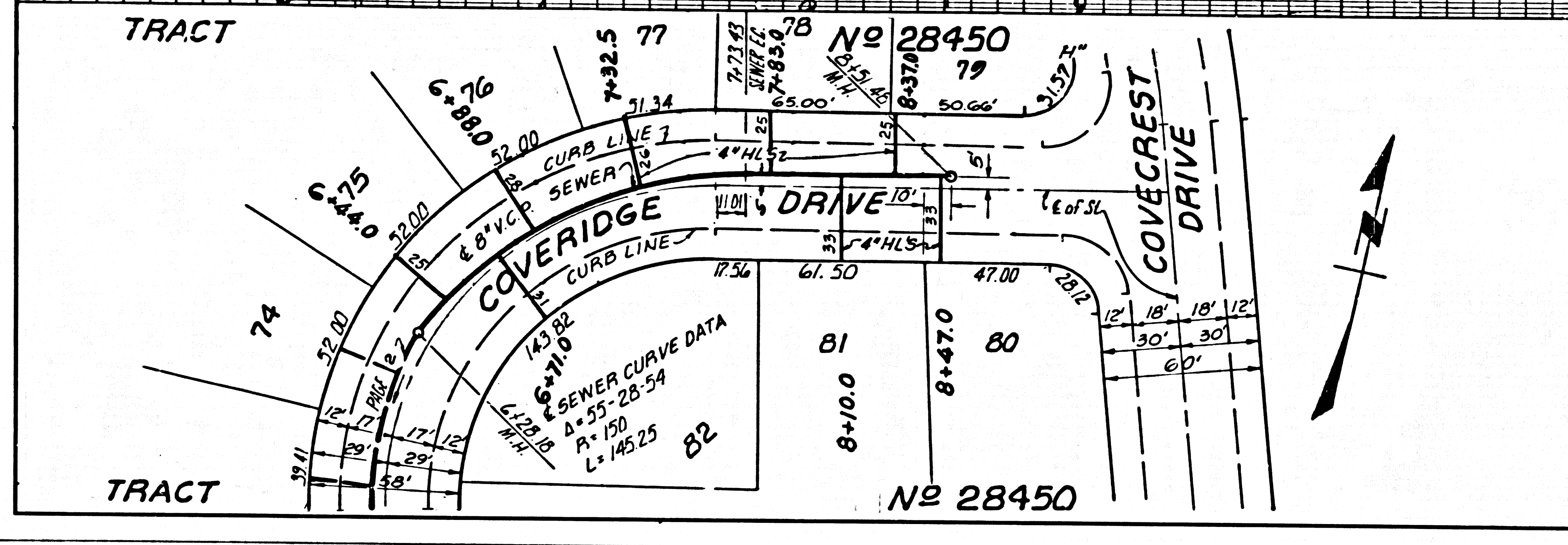
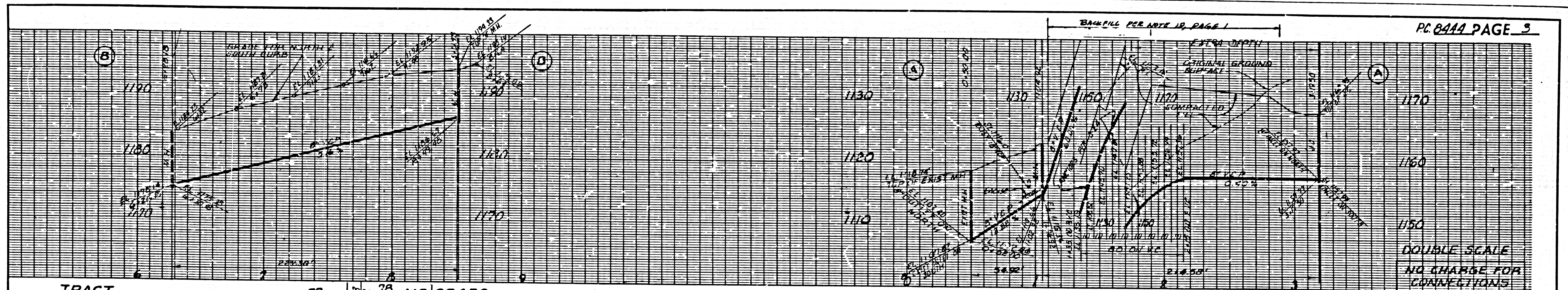
NOTE:
 GRADES TO WHICH THIS IMPROVEMENT IS TO BE CONSTRUCTED ARE SHOWN ON PLANS AND PROFILE. GRADE POINTS FOR TOP OF CURBS, CENTER LINE OF STREETS, OR CENTER LINE OF ALLEYS ARE SHOWN BY CIRCLES ON PROFILES. AT ALL POINTS BETWEEN DESIGNATED POINTS THE GRADE SHALL BE ESTABLISHED SO AS TO CONFORM TO A STRAIGHT LINE DRAWN BETWEEN SAID DESIGNATED POINTS. ELEVATIONS ARE IN FEET ABOVE U.S.C. & G.S. SEA LEVEL DATUM OF 1929.
 WORK SHALL BE CONSTRUCTED ACCORDING TO THE STANDARD SPECIFICATIONS FOR PUBLIC WORKS CONSTRUCTION AND SPECIAL PROVISIONS FOR THE CONSTRUCTION OF SANITARY SEWERS DATED JAN. 2, 1969, AS REVISED, AND SHALL BE PROSECUTED ONLY IN THE PRESENCE OF THE COUNTY ENGINEER.
 APPROVAL OF THIS PLAN BY THE COUNTY OF LOS ANGELES DOES NOT CONSTITUTE A REPRESENTATION AS TO THE ACCURACY OF THE LOCATION OR OF THE EXISTENCE OR NON-EXISTENCE OF ANY UNDERGROUND UTILITY OR STRUCTURE WITHIN THE LIMITS OF THIS PROJECT. THIS NOTE APPLIES TO ALL PAGES.
 IF WORK IS TO BE DONE IN A STATE HIGHWAY, A PERMIT MUST BE OBTAINED FROM THE STATE OF CALIFORNIA, DIVISION OF HIGHWAYS, 120 SOUTH SPRING STREET, LOS ANGELES, CALIFORNIA.
 COUNTY OF LOS ANGELES, CALIFORNIA
 JOHN A. LAMBIE, COUNTY ENGINEER J. D. PARKHURST, CHIEF ENGINEER
 APPROVED BY *Robert M. Miller* 2-11-70 APPROVED BY *J. D. Parkhurst*
 REGIONAL ENGINEER (DATE) OFFICE ENGINEER
 CHECKED BY *Ervin Engineering* 2-10-70
 REG. C. E. NO. 10653

41989



DOUBLE SCALE
 NO CHARGE FOR CONNECTIONS

41990



B.M. BY 4384 ELEV. 1009.234
 CHIS 50' E EDGE CATCH BASIN 9 FT. x 5' 0"
 N. EDGE 44 FT. EAST @ HAWTHORNE
 BLVD. 0.65 MI. N. CREST ROAD
 PALOS VERDES QUAD. 19 65

DOUBLE SCALE
 LOMITA BLDG. DIST. NO. 12

PROFILE, ALIGNMENT AND GRADE OF
 SANITARY SEWERS P.C. 8444 B
 TO BE CONSTRUCTED IN PAGE 1

TRACT No 28450
 PRIVATE CONTRACT NO. 8444 B

W.S. 27
 2 SHEETS; 4 PAGES
 SCALE: HORIZ. 1" = 40' VERT. 1" = 4'
 FEB. 1970
 PREPARED IN THE OFFICES OF

ERVIN ENGINEERING
 729 1/2 PARM VIEW ST. LOS ANGELES, CALIF. 90057
 By: [Signature] REG. C. E. NO. 11932

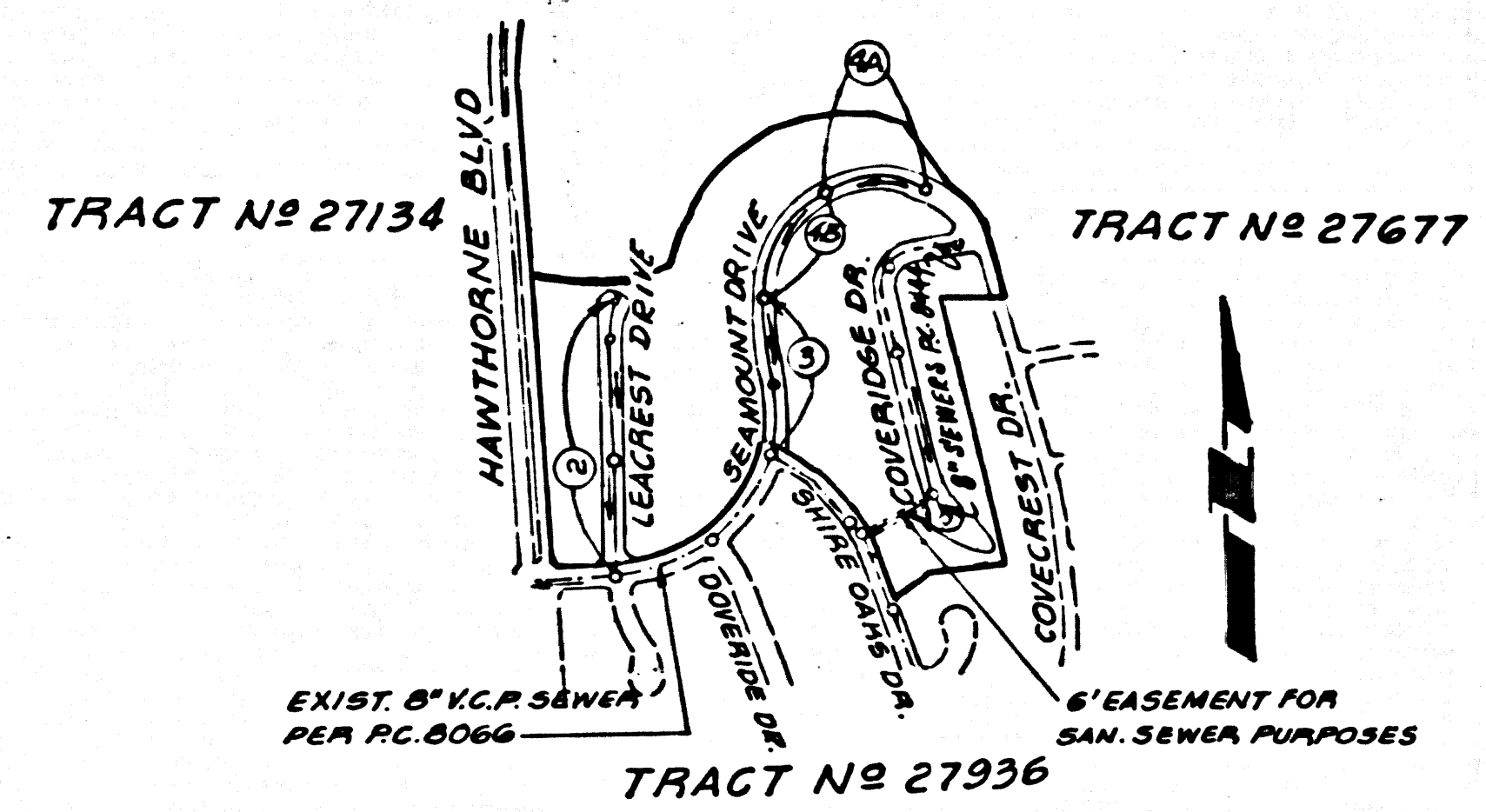
- NOTES:
- LOT 40 ON SHIRE OAKS DRIVE SERVED BY SAN. SEWER FROM EXIST. 4" H.L. P.C. 8066.
 - LOTS 22, 23, 24, 25, 16, 17 & 18 ON SEAMOUNT DRIVE SERVED BY SAN. SEWER FROM EXIST. 4" H.L.'S P.C. 8066.

- NOTES:
- HOUSE LATERALS TO BE CONSTRUCTED WITH INVERTS AT PROPERTY LINE & FEET BELOW CURB GRADE EXCEPT AS NOTED.
 - PROVIDE STAKES ON THE PROPERTY LINE OR PROPERTY LINES PRODUCED AT RIGHT ANGLES TO THE SEWER LINE AT THE CENTER LINE OF EACH MANHOLE.
 - NO REPRESENTATIVE OF THE COUNTY ENGINEER WILL SURVEY OR LAY OUT ANY PORTION OF THE WORK.
 - THE PRIVATE ENGINEER SHALL FURNISH THE COUNTY ENGINEER WITH GRADE SHEETS AND STATIONING FOR ALL HOUSE LATERALS AND "T" OR "T" BRANCHES AND SHALL PROVIDE STAKES FOR THEM AT THEIR PROPER LOCATIONS WITH STATIONING PLAINLY MARKED. ALL HOUSE LATERALS SHALL BE CONSTRUCTED IN A STRAIGHT ALIGNMENT AT RIGHT ANGLES FROM THE MAIN LINE SEWER EXCEPT AS SHOWN ON THE PLANS. HOUSE LATERALS FROM CHIMNEYS SHALL NOT HAVE AN ANGLE OF LESS THAN 45° WITH THE MAIN LINE SEWER. ANY CHANGE IN ALIGNMENT SHALL BE REQUESTED IN WRITING BY THE PRIVATE ENGINEER.
 - THE PRIVATE ENGINEER SHALL FURNISH THE HOUSE LATERAL DEPTH AT THE PROPERTY LINE BELOW THE TOP OF CURB ELEVATION FOR EACH HOUSE LATERAL ON THE GRADE SHEET.
 - NO REVISIONS SHALL BE MADE IN THESE PLANS WITHOUT THE APPROVAL OF THE COUNTY ENGINEER.
 - THE CONTRACTOR SHALL NOTIFY THE CONSTRUCTION DIVISION BY TELEPHONE, MADISON 9-470, EXT. 8158, AT LEAST TWENTY-FOUR HOURS BEFORE STARTING ANY WORK UNDER THIS CONTRACT.
 - ALL STRUCTURES SHALL BE EITHER BRICK MANHOLES PER S-3 OR PRECAST CONCRETE MANHOLES PER S-36 EXCEPT AS NOTED.
 - "T" OR "T" BRANCHES MAY BE USED FOR CONNECTIONS TO MAINLINE SEWERS EXCEPT AS NOTED.
 - MANHOLE TOPS IN UNIMPROVED RIGHTS OF WAY TO BE 24 INCHES ABOVE FINISHED GRADE.
 - USE EXTRA STRENGTH PIPE. ALL PIPE IS STANDARD DEPTH EXCEPT AS NOTED.
 - VITRIFIED CLAY PIPE JOINTS SHALL BE TYPE "B", "T", OR "C" PER STANDARD SPECIFICATIONS SECTION 208.2.
 - IF A POWER POLE IS WITHIN THREE FEET OF THE SEWER, THE SEWER SHALL BE ENCASED, PER S-22, TWO FEET ON EACH SIDE FROM THE POINT OF INTERFERENCE.
 - RESURFACE ALL TRENCHES WITHIN PAVED AREAS TO MEET L.A. COUNTY ROAD DEPT. OR CALIFORNIA STATE HIGHWAY REQUIREMENTS IN ACCORDANCE WITH PERMITS.
 - SEWERS TO BE TESTED FOR LEAKAGE PER SECTION 206.2.37 OF THE STANDARD SPECIFICATIONS.
 - REFER TO SECTION 7-10.4.1 OF THE STANDARD SPECIFICATIONS, REGARDING SAFETY ORDERS.
 - ALL JOINTS BETWEEN CAST IRON PIPE AND VITRIFIED CLAY PIPE SHALL BE MADE WITH A RUBBER SLEEVE JOINT, TYPE "C" OR "B", UNLESS OTHERWISE APPROVED BY THE COUNTY ENGINEER.

MINIMUM PUBLIC SAFETY REQUIREMENTS	S-1
BRICK MANHOLE	S-3
NON-REINFORCED PRECAST CONCRETE MANHOLE	S-36
MANHOLE FRAME AND COVER	S-35
STANDARD MANHOLE STEP	S-17
REINFORCING FOR SEWER PIPE	S-21
CRADLING AND ENCASEMENT	S-23
WYE OR TEE SUPPORT	S-24
ALLOYWALL TRENCH WIDTH	S-28

19. SPECIAL BRACKLES IN DESIGNATED AREAS:
 (A) BRACKLES TO BE REMOVED OR REPLACED OTHER BRACK REMOVED IN AS TO ACHIEVE THE NEAREST OR FINISHED GRADES AND SLOPES SHOWN ON THE GRADING PLAN APPROVED FOR THIS TRACT BY THE COUNTY ENGINEER.
 (B) ALL BRACKLES AND BRACKS REPLACED SHALL BE CONSTRUCTED IN A MANNER OF 90% OF MAXIMUM DENSITY PER A.S.T.M. STANDARD METHOD OF TEST 2-48 277 AT APPROVED ACCEPTANCE. IDENTIFICATION OF SOON CONSTRUCTION SHALL BE SUBMITTED TO THE CONSTRUCTION DIVISION.

RANCHO LOS PALOS VERDES
 PORTION OF LOT "H"



INDEX MAP
 TRACT No 28450
 P.C. 8444 B
 SCALE: 1" = 600'

County Sanitation Districts shall be notified prior to the following so that required inspection can be made (Phone 899-5686 - 634-3097)

Acceptance of the project.

No connections for the disposal of industrial wastes shall be made to sewers shown on these drawings without written permission from the Chief Engineer and General Manager of the County Sanitation Districts.

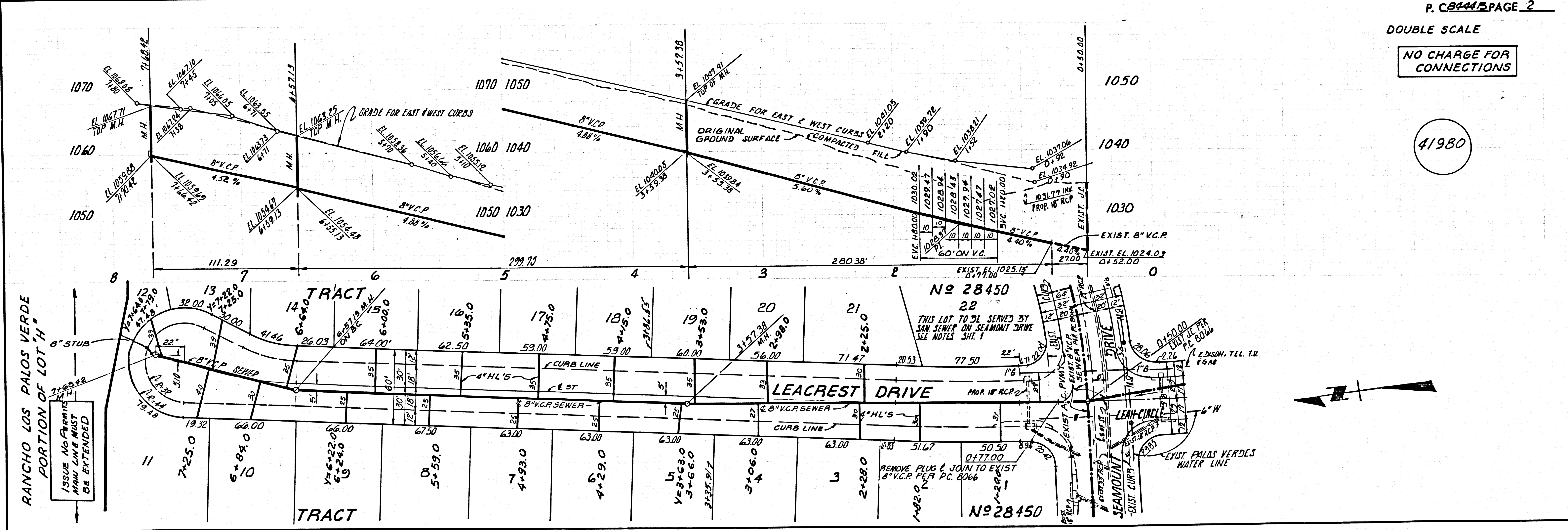
COLLECT CHARGES AS INDICATED

PRIVATE ENGINEER'S
 NOTICE TO CONTRACTOR

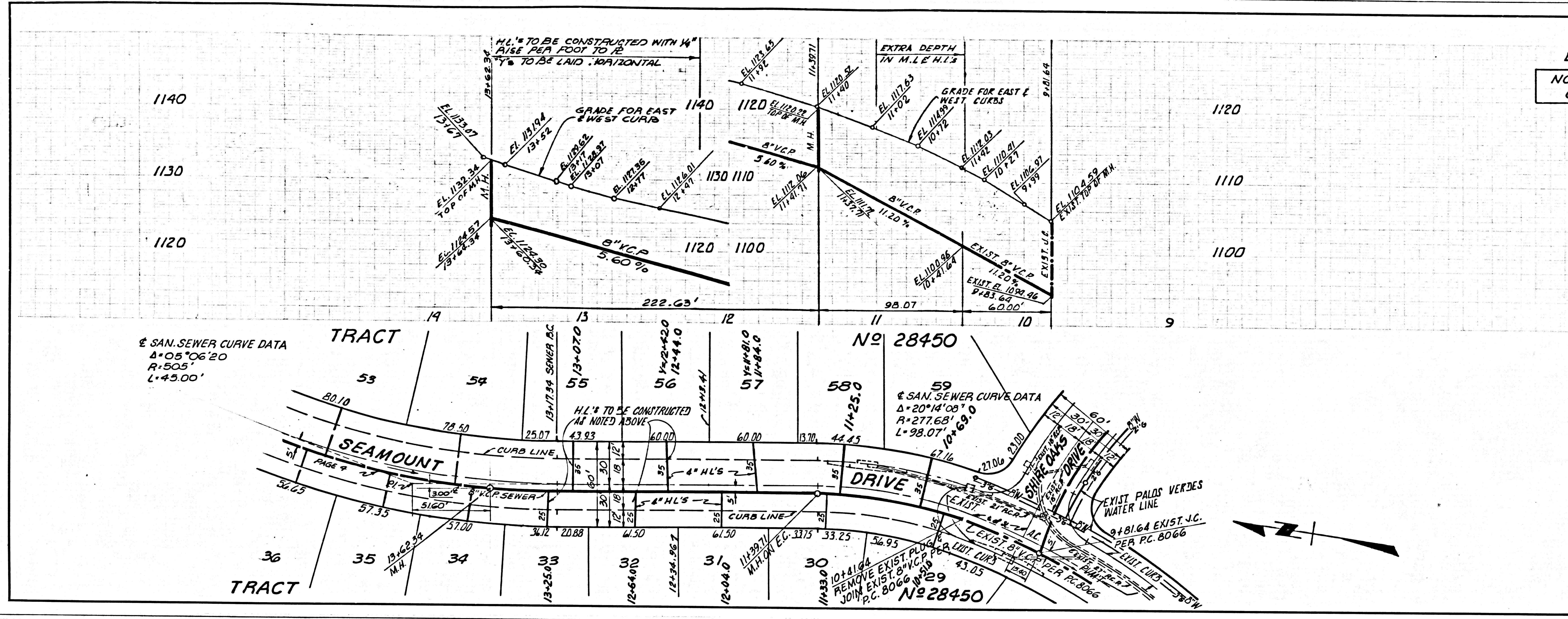
THE EXISTENCE AND LOCATION OF ANY UNDERGROUND UTILITY PIPES OR STRUCTURES SHOWN ON THESE PLANS ARE OBTAINED BY A SEARCH OF THE AVAILABLE RECORDS. TO THE BEST OF OUR KNOWLEDGE THERE ARE NO EXISTING UTILITIES OTHER THAN THOSE SHOWN ON THIS MAP. THE CONTRACTOR IS REQUIRED TO TAKE PRECAUTIONARY MEASURES TO PROTECT THE UTILITY LINES SHOWN AND ANY OTHER LINES NOT OF RECORD OR NOT SHOWN ON THIS DRAWING.

P. C. 8444 B PAGE 2
 DOUBLE SCALE

NO CHARGE FOR CONNECTIONS

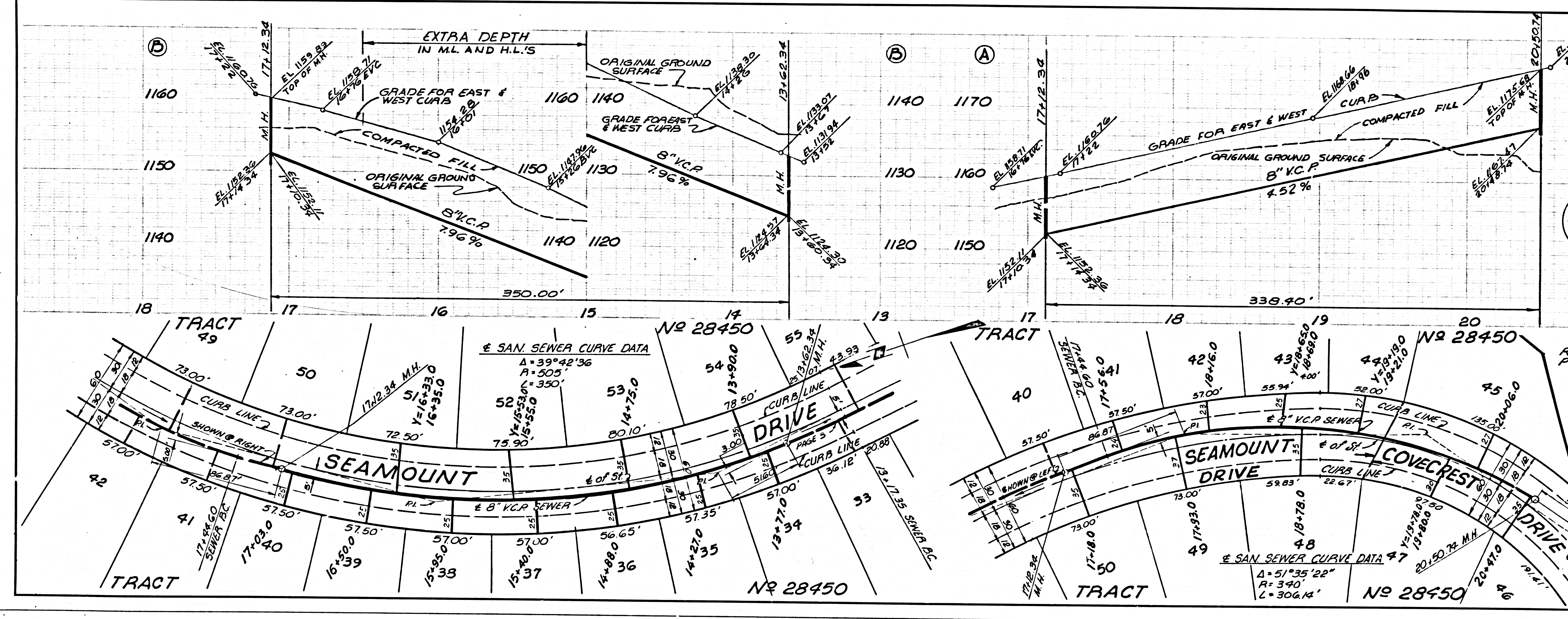


DOUBLE SCALE
NO CHARGE FOR CONNECTIONS.



SCALE 1/8" = 1'-0" COUNTY SEWER SHEET NO. 2 SO. CAL. BLUEPRINT CO.

DOUBLE SCALE
NO CHARGE FOR CONNECTIONS.



RANCHO LOS PALOS VERDES PORTION OF LOT "H"

SCALE 1/8" = 1'-0" COUNTY SEWER SHEET NO. 2 SO. CAL. BLUEPRINT CO.