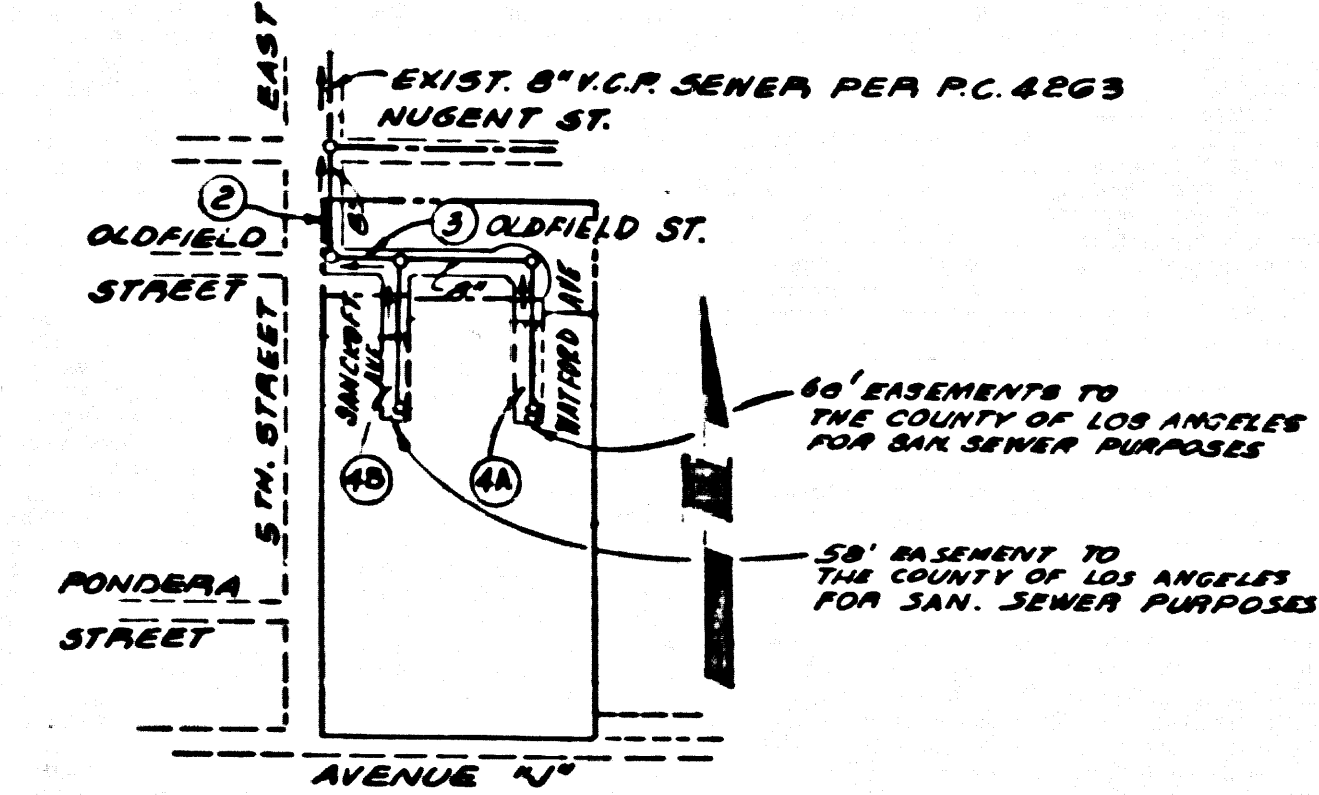


B.M. BL 65 ELEV. 2391.488  
 C.S. MON. IN WELL AT E INTERSECTION  
 AVE. 4th ST. E. M.M.D. T.7N., R.12 W.  
 1/4 COR. 14-23. (E. EDGE)  
 LANCASTER QUAD. 19 62



**INDEX MAP**  
 TRACT No 31035,  
 P.C. 8454  
 SCALE 1" = 600'  
 NOTE: NUMBERS IN CIRCLES INDICATE PAGE NUMBERS

LANCASTER BLDG. DIST. NO. 8  
 PROFILE, ALIGNMENT AND GRADE OF  
**SANITARY SEWERS** P.C. 8454  
 CONSTRUCTED IN PAGE 1

**TRACT No 31035**  
**PRIVATE CONTRACT NO. 8454**  
 W.S. 70  
 2 SHEETS; 4 PAGES  
 SCALE: VERT. 1" = 4' OCTOBER 1970  
 HORIZ. 1" = 40'  
 PREPARED IN THE OFFICES OF  
**ERVIN ENGINEERING**  
 729 S. PARR VIEW ST. LOS ANGELES, CALIF. 90087  
 By: Frank P. Ervin  
 REG. C. E. NO. 11922

REVISION: 11-24-70  
 ALL ELEVATIONS SHOWN HEREON MUST BE  
 LOWERED BY 0.66 FT. TO FIT ACTUAL  
 GROUND ELEVATIONS.  
 APPROVED *R. L. Kennedy* 11/26/70 16742  
 OFFICE OF THE COUNTY ENGINEER R.E. NO.

- NOTES:
- HOUSE LATERALS TO BE CONSTRUCTED WITH INVERTS AT PROPERTY LINE 4 FEET BELOW CURB GRADE EXCEPT AS NOTED.
  - PROVIDE STAKES ON THE PROPERTY LINE OR PROPERTY LINES PRODUCED AT RIGHT ANGLES TO THE SEWER LINE AT THE CENTER LINE OF EACH MANHOLE.
  - NO REPRESENTATIVE OF THE COUNTY ENGINEER WILL SURVEY OR LAY OUT ANY PORTION OF THE WORK.
  - THE PRIVATE ENGINEER SHALL FURNISH THE COUNTY ENGINEER WITH GRADE SHEETS AND STATIONING FOR ALL HOUSE LATERALS AND "T" OR "T" BRANCHES AND SHALL PROVIDE STAKES FOR THEM AT THESE PROPOSED LOCATIONS WITH STATIONING PLAINLY MARKED. ALL HOUSE LATERALS SHALL BE CONSTRUCTED IN A STRAIGHT ALIGNMENT AT RIGHT ANGLES FROM THE MAIN LINE SEWER EXCEPT AS SHOWN ON THE PLANS. HOUSE LATERALS FROM CHIMNEYS SHALL NOT HAVE AN ANGLE OF LESS THAN 45° WITH THE MAIN LINE SEWER. ANY CHANGE IN ALIGNMENT SHALL BE REQUESTED IN WRITING BY THE PRIVATE ENGINEER.
  - THE PRIVATE ENGINEER SHALL FURNISH THE HOUSE LATERAL DEPTH AT THE PROPERTY LINE BELOW THE TOP OF CURB ELEVATION FOR EACH HOUSE LATERAL ON THE GRADE SHEET.
  - NO REVISIONS SHALL BE MADE IN THESE PLANS WITHOUT THE APPROVAL OF THE COUNTY ENGINEER.
  - THE CONTRACTOR SHALL NOTIFY THE CONSTRUCTION DIVISION BY TELEPHONE, MADISON 9-4747, EXT. 81531, AT LEAST TWENTY-FOUR HOURS BEFORE STARTING ANY WORK UNDER THIS CONTRACT.
  - ALL STRUCTURES SHALL BE EITHER BRICK MANHOLES PER 5-3 OR PRECAST CONCRETE MANHOLES PER 5-36 EXCEPT AS NOTED.
  - "T" OR "T" BRANCHES MAY BE USED FOR CONNECTIONS TO MANHOLE SEWERS EXCEPT AS NOTED.
  - MANHOLES FOR UNIMPROVED RIGHTS-OF-WAY TO BE 24" INCHES ABOVE FINISHED GRADE.
  - USE EXTRA STRENGTH PIPE - 44" DIA. 42" STANDARD - 34" DIA. - 34" DIA. - 34" DIA. - 34" DIA.
  - VITRIFIED CLAY PIPE JOINTS SHALL BE TYPE "B", "T", OR "C" PER STANDARD SPECIFICATIONS SECTION 200.2.
  - IF A POWER POLE IS WITHIN THREE FEET OF THE SEWER, THE SEWER SHALL BE ENCASED, PER 8-22, TWO FEET ON EACH SIDE FROM THE POINT OF INTERFERENCE.
  - IF DURING THE COURSE OF CONSTRUCTION IT IS DETERMINED THAT THERE IS LESS THAN FOUR FEET OF COVER OVER THE TOP OF A MAIN LINE OR HOUSE LATERAL "T" SEWER WHICH IS NOT INDICATED ON THE PLANS, THE PIPE SHALL BE ENCASED PER 8-22, UNLESS OTHERWISE APPROVED BY THE COUNTY ENGINEER.
  - RESURFACE ALL TRENCHES WITHIN PAVED AREAS TO MEET L.A. COUNTY ROAD DEPT. OR CALIFORNIA STATE HIGHWAY REQUIREMENTS IN ACCORDANCE WITH PERMITS.
  - SEWERS TO BE TESTED FOR LEAKAGE PER SECTION 200-3.3.7 OF THE STANDARD SPECIFICATIONS.
  - REFER TO SECTION 7-18.4.1 OF THE STANDARD SPECIFICATIONS, REGARDING SAFETY ORDERS.
  - ALL JOINTS BETWEEN CAST IRON PIPE AND VITRIFIED CLAY PIPE SHALL BE MADE WITH A RUBBER SLEEVE JOINT, TYPE "C" OR "B", WITH RUSHING IF NECESSARY PER STANDARD SPECIFICATIONS, SECTION 200.2.
  - THE FOLLOWING LATEST REVISED STANDARD PLANS ON FILE IN THE OFFICE OF THE COUNTY ENGINEER SHALL APPLY IN THE CONSTRUCTION OF THIS PROJECT:

REVISION	DATE
MINIMUM PUBLIC SAFETY REQUIREMENTS	8-1
BRICK MANHOLE	8-2
NON-REINFORCED PRECAST CONCRETE MANHOLE	8-3
MANHOLE FRAME AND COVER	8-18
STANDARD MANHOLE STEP	8-17
BEDDING FOR SEWER PIPE	8-21
CRADING AND ENCASEMENT	8-22
PIPE OR THE SUPPORT	8-26
ALLOWABLE TRENCH WIDTHS	8-33

PRIVATE ENGINEER'S  
 NOTICE TO CONTRACTOR

THE EXISTENCE AND LOCATION OF ANY UNDERGROUND UTILITY PIPES OR STRUCTURES SHOWN ON THESE PLANS ARE OBTAINED BY A SEARCH OF THE AVAILABLE RECORDS TO THE BEST OF OUR KNOWLEDGE THERE ARE NO EXISTING UTILITIES EXCEPT AS SHOWN ON THIS MAP.

THE CONTRACTOR IS REQUIRED TO TAKE PRECAUTIONARY MEASURES TO PROTECT THE UTILITY LINES SHOWN AND ANY OTHER LINES NOT OF RECORD OR NOT SHOWN ON THIS DRAWING.

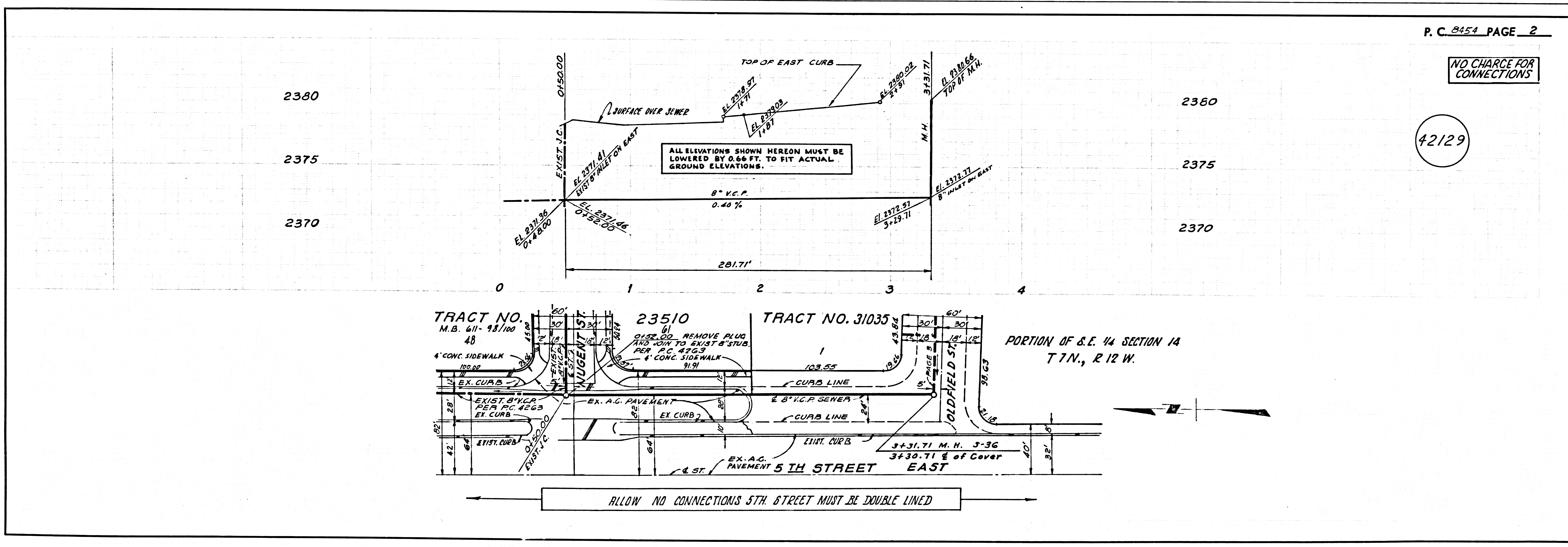
County Sanitation Districts shall be notified prior to the following so that required inspection can be made (Phone 339-1025 or 339-2022)

Acceptance by the District:

No connections for the disposal of industrial wastes shall be made to sewers shown on these drawings without written permission from the Chief Engineer and General Manager of the County Sanitation Districts.

**COLLECT CHARGES AS INDICATED**

COUNTY OF LOS ANGELES, CALIFORNIA  
 JOHN A. LAMBIE, COUNTY ENGINEER J. D. PARKHURST, CHIEF ENGINEER  
 CO. SAN. DIST. NO. 14  
 APPROVED BY *R. L. Kennedy* 11/26/70 16742 APPROVED BY *J. D. Parkhurst*  
 REGIONAL ENGINEER DATE REGIONAL OFFICE, SUPERVISOR TO COVER THE COST OF CONSTRUCTION INSPECTION AND RECORD PLANS.  
 CHECKED BY *R. L. Kennedy* 11/26/70  
 REG. C.E. NO. 16742



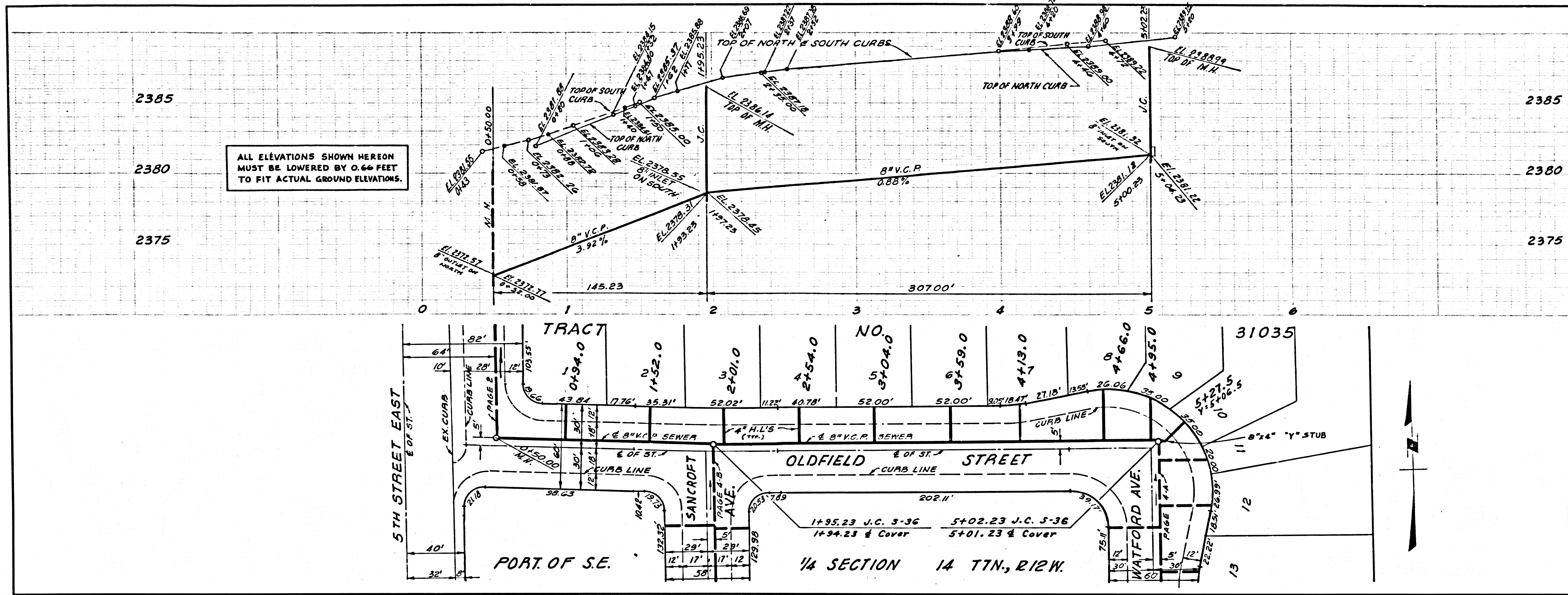
P. C. 8454 PAGE 2

**NO CHARGE FOR CONNECTIONS**

42129

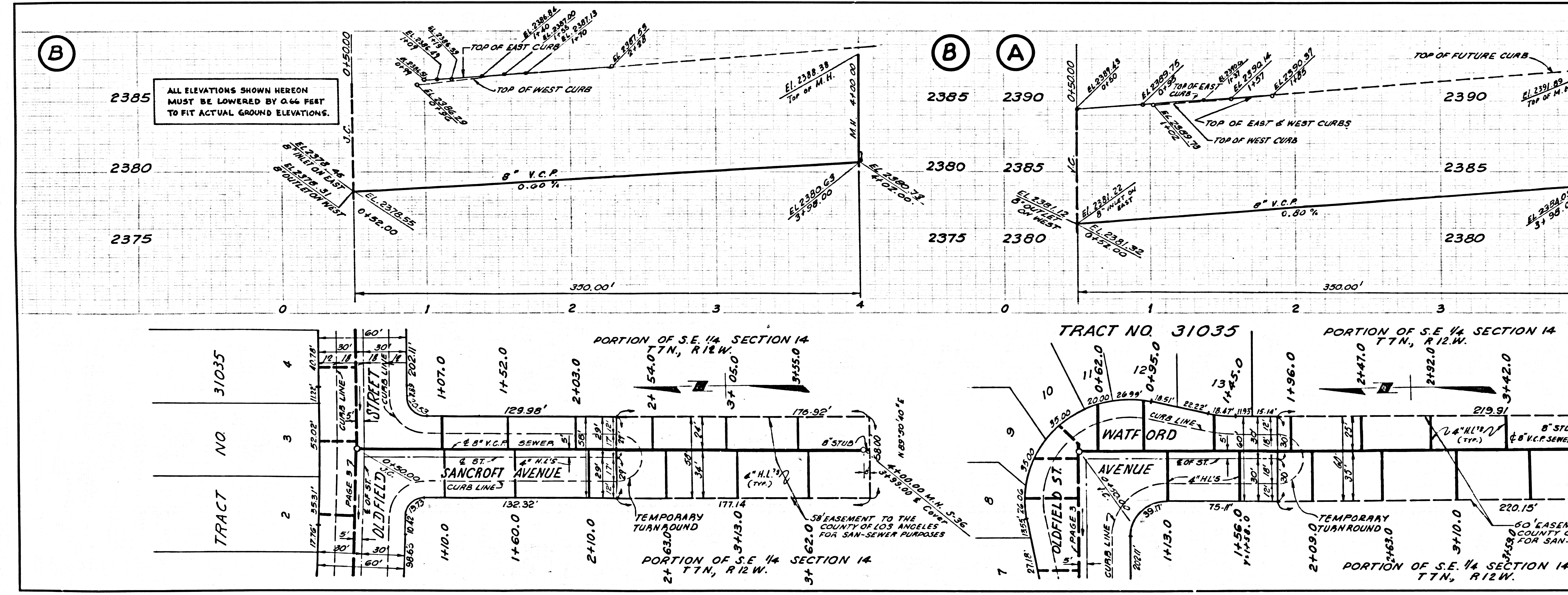


NO CHARGE FOR CONNECTIONS



42130

NO CHARGE FOR CONNECTIONS



42131