

B.M. B.Y. 2987 ELEV. 114.790  
 LEAD & TACK WEST CURB 8" NORTH  
 B.C.R. @ N.W. CORNER AVALON BLVD.  
 E. EL SEGUNDO BLVD.  
 WATTS QUAD. 19.65

REVISION #1 1/2" CHANGED ALIGNMENT  
 PAGE 3 & 4 FROM STA. 14+38 TO STA. 20+62.35  
 Robert O. Heiser 1/14/71  
 RE: 11/17/68  
 APPROVED: *Robert O. Heiser*  
 OFFICE OF COUNTY ENGINEER  
 1/20/71

THE FOLLOWING STANDARD PLANS ON FILE IN THE  
 OFFICE OF THE COUNTY ENGINEER SHALL APPLY IN THE  
 CONSTRUCTION OF THIS PROJECT.

LEGEND

MIN. EXCAVATION SAFETY REQUIREMENTS	S-1
BRICK MANHOLE	S-2
NON REINFORCED PRECAST CONCRETE MANHOLE	S-3C
MANHOLE FRAME & COVER	S-3S
MANHOLE STEP	S-17
BEDDING & SEWER PIPE	S-21
CRADLING & ENCASEMENT	S-23
WYE OR TEE SUPPORT	S-26
ALLOWABLE TRENCH WIDTH	S-33

NOTE: (In El Segundo Blvd)  
 FROM 5:30 A.M. TO END OF WORKING DAY THE  
 WESTBOUND TRAFFIC MAY BE REDUCED TO  
 ONE LANE. AT ALL OTHER TIMES, MAINTAIN  
 TWO LANES. EASTBOUND TRAFFIC NOT TO BE  
 DISTURBED AT ANY TIME.

No connections for the disposal of  
 industrial wastes shall be made to  
 sewers shown on these drawings  
 without written permission from the  
 Chief Engineer and General Manager  
 of the County Sanitation District.

A PERMIT MUST BE OBTAINED FROM THE  
 CITY OF COMPTON BEFORE BEGINNING  
 ANY EXCAVATION WITHIN THE CITY.

APPROVED:  
 BY *Robert O. Heiser*  
 CITY ENGINEER OF COMPTON

LENNOX BLDG. DIST. NO. 7

- NOTES:
- PROVIDE STAKES ON THE PROPERTY LINE OR PROPERTY LINES PRODUCED AT RIGHT ANGLES TO THE SEWER LINE AT THE CENTER LINE OF EACH MANHOLE.
  - NO REPRESENTATIVE OF THE COUNTY ENGINEER WILL SURVEY OR LAY OUT ANY PORTION OF THE WORK.
  - THE PRIVATE ENGINEER SHALL FURNISH THE COUNTY ENGINEER WITH GRADE SHEETS AND STATIONING FOR ALL HOUSE LATERALS AND 1" BRANCHES AND SHALL PROVIDE STAKES FOR THEM AT THEIR PROPER LOCATIONS WITH STATIONING PLAINLY MARKED. ALL HOUSE LATERALS SHALL BE CONSTRUCTED IN A STRAIGHT ALIGNMENT AT RIGHT ANGLES FROM THE MAIN LINE SEWER EXCEPT AS SHOWN ON THE PLANS. HOUSE LATERALS FROM CHIMNEYS SHALL NOT HAVE AN ANGLE OF LESS THAN 45° WITH THE MAIN LINE SEWER. ANY CHANGE IN ALIGNMENT SHALL BE REQUESTED IN WRITING BY THE PRIVATE ENGINEER.
  - THE PRIVATE ENGINEER SHALL FURNISH THE HOUSE LATERAL DEPTH AT THE PROPERTY LINE BELOW THE TOP OF CURB ELEVATION FOR EACH HOUSE LATERAL ON THE GRADE SHEET.
  - NO REVISIONS SHALL BE MADE IN THESE PLANS WITHOUT THE APPROVAL OF THE COUNTY ENGINEER.
  - THE CONTRACTOR SHALL NOTIFY THE CONSTRUCTION DIVISION BY TELEPHONE, MADISON 9-474, EXT. 81331, AT LEAST TWENTY-FOUR HOURS BEFORE STARTING ANY WORK UNDER THIS CONTRACT.
  - ALL STRUCTURES SHALL BE EITHER BRICK MANHOLES PER S-3 OR PRECAST CONCRETE MANHOLES PER S-3C EXCEPT AS NOTED.
  - USE STANDARD MANHOLE FRAMES AND COVERS, S-18, EXCEPT AS NOTED.
  - MANHOLE TOPS IN UNIMPROVED RIGHTS-OF-WAY TO BE SIX INCHES ABOVE FINISHED GRADE.
  - USE EXTRA STRENGTH PIPE. ALL PIPE IS STANDARD DEPTH EXCEPT AS NOTED.
  - VITRIFIED CLAY PIPE JOINTS SHALL BE TYPE "D", 7" OR "6" PER STD. SPEC. 208-2.
  - IF A POWER POLE IS WITHIN THREE FEET OF THE SEWER, THE SEWER SHALL BE ENCASED, PER S-23, TWO FEET ON EACH SIDE FROM THE POINT OF INTERFERENCE.
  - IF DURING THE COURSE OF CONSTRUCTION IT IS DETERMINED THAT THERE IS LESS THAN FOUR FEET OF COVER OVER THE TOP OF A MAIN LINE OR HOUSE LATERAL V.C.P. SEWER WHICH IS NOT INDICATED ON THE PLANS, THE PIPE SHALL BE ENCASED PER S-23, UNLESS OTHERWISE APPROVED BY THE COUNTY ENGINEER.
  - HOUSE LATERALS TO BE CONSTRUCTED WITH INVERTS AT PROPERTY LINE AS NOTED.
  - APPROXIMATE ALL TRENCHES WITHIN PAVED AREAS TO MEET L.A. COUNTY ROAD DEPT. OR CALIFORNIA STATE HIGHWAY REQUIREMENTS IN ACCORDANCE WITH PERMITS.
  - SEWERS TO BE TESTED FOR LEAKAGE PER SECTION 306-2-3-7 STD. SPECS.
  - REFER TO SECTION 7-10-6-1 OF THE STD. SPECS. REGARDING SAFETY ORDERS.
  - ALL JOINTS BETWEEN CAST IRON PIPE AND VITRIFIED CLAY PIPE SHALL BE MADE WITH A RUBBER SLEEVE JOINT, TYPE "D" OR "D" (WITH BUSHING IF NECESSARY) PER STD. SPECS. 208-2.

County Sanitation Districts shall be notified prior to the following on that twenty-four (24) hours notice shall be made (Phone 800-3300 or 434-3097)

Commencement of construction of sewer  
 hole on District trunk sewer.  
 Completion of the project.

NOTICE TO CONTRACTOR  
 The existence and location of any underground utility pipes or structures shown on these plans are obtained by a search of the available records. To the best of my knowledge there are no existing utilities except as shown on these plans. The contractor is required to take due precautionary measures to protect the utility lines shown and any other lines not of record or not shown on these plans.

*Robert O. Heiser*  
 1/20/71  
 CITY ENGINEER

COLLECT CHARGES  
 AS INDICATED

PROFILE ALIGNMENT AND GRADE OF  
 SANITARY SEWERS PAGE 1

TRACT No 25674  
 PRIVATE CONTRACT NO. 8456

W.S. 26  
 4 SHEETS, 7 PAGES 7  
 SCALE: HORIZ. 1"=40' VERT. 1"=4'

FEBRUARY, 1970  
 PREPARED IN THE OFFICES OF  
 E.L. PEARSON & ASSOCIATES  
 BY *George K. Sipe*  
 REG. C.E. NO. 13360

FOR LEGEND SEE PLAN NO. S-1

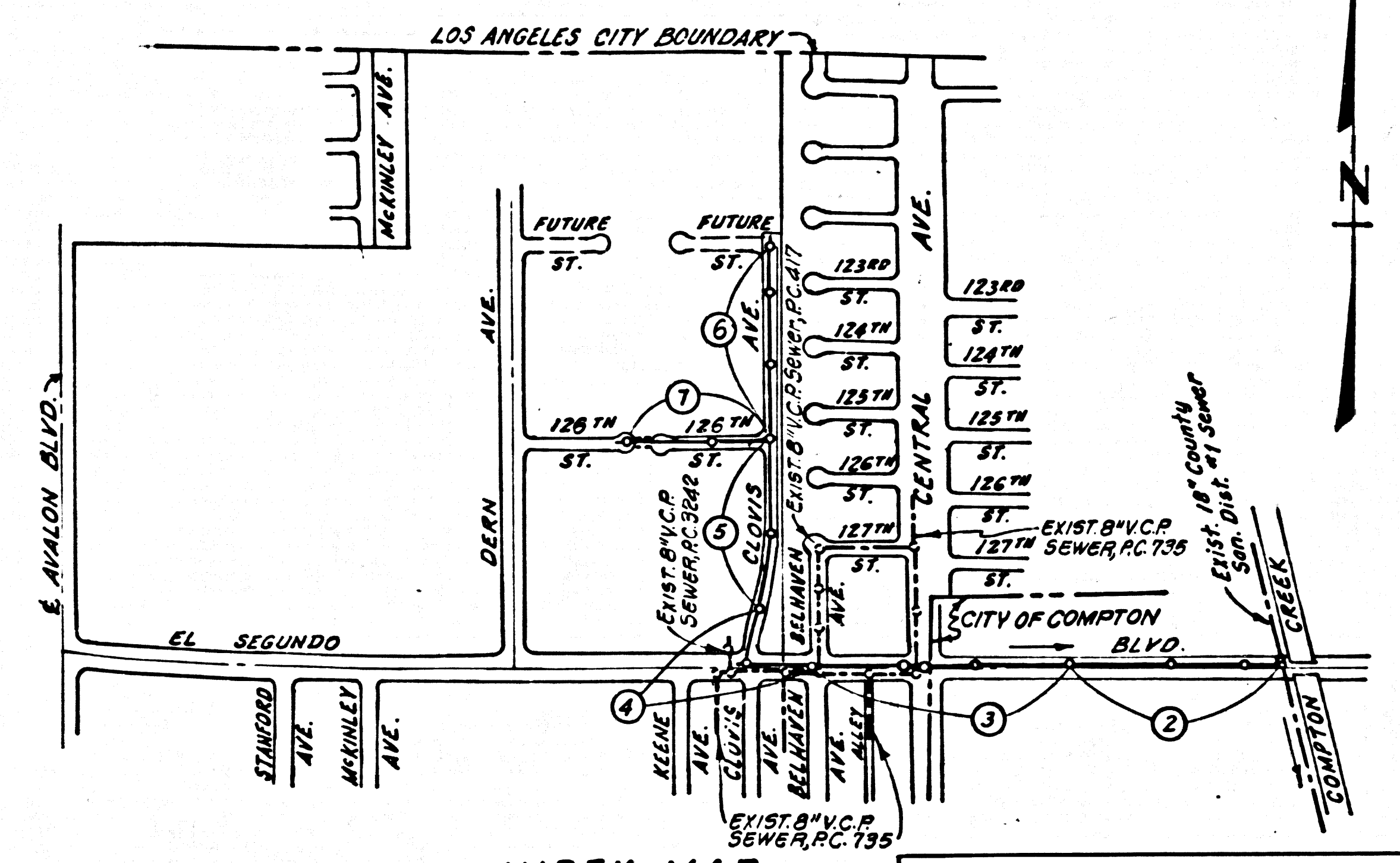
NOTE:  
 GRADES TO WHICH THIS IMPROVEMENT IS TO BE CONSTRUCTED ARE SHOWN ON PLANS AND PROFILES. GRADE POINTS FOR TOP OF CURBS, CENTER LINE OF STREETS, OR CENTER LINE OF ALLEYS ARE SHOWN BY CIRCLES ON PROFILES. AT ALL POINTS BETWEEN DESIGNATED POINTS THE GRADE SHALL BE ESTABLISHED SO AS TO CONFORM TO A STRAIGHT LINE DRAWN BY BETWEEN SAID DESIGNATED POINTS. ELEVATIONS ARE IN FEET ABOVE U.S.C. & G.S. MEAN LEVEL DATUM OF 1929.  
 WORK SHALL BE CONSTRUCTED ACCORDING TO THE STANDARD SPECIFICATIONS FOR PUBLIC WORKS CONSTRUCTION (CIVIL EDITION) AND COUNTY ENGINEER SPECIAL PROVISIONS FOR THE CONSTRUCTION OF SANITARY SEWERS DATED APRIL 1, 1970 WHICH SHALL BE OBSERVED IN THE PRESENCE OF THE COUNTY ENGINEER.  
 BEFORE WORK CAN BE STARTED, THE CONTRACTOR MUST OBTAIN A PERMIT TO EXCAVATE IN COUNTY STREETS FROM THE L.A. COUNTY ROAD DEPT., DISTRICT OFFICE NO. 8 AND PAY A FEE TO THE COUNTY ENGINEER, ROOM 300, COUNTY ENGINEERING BUILDING, 108 WEST SECOND STREET OR RAFAEL READER DEPTMELLA, PALLET, REGIONAL OFFICE, SUFFICIENT TO COVER THE COST OF CONSTRUCTION INSPECTION AND RECORD PLANS.  
 APPROVAL OF THIS PLAN BY THE COUNTY OF LOS ANGELES DOES NOT CONSTITUTE A REPRESENTATION AS TO THE ACCURACY OF THE LOCATION OF OR THE EXISTENCE OR NON-EXISTENCE OF ANY UNDERGROUND UTILITY PIPE OR STRUCTURE WITHIN THE LIMITS OF THIS PROJECT. THIS NOTE APPLIES TO ALL PAGES.  
 IF WORK IS TO BE DONE IN A STATE HIGHWAY, A PERMIT MUST BE OBTAINED FROM THE STATE OF CALIFORNIA, DIVISION OF HIGHWAYS, 126 SOUTH SPRING STREET, LOS ANGELES, CALIFORNIA.

COUNTY OF LOS ANGELES, CALIFORNIA  
 JOHN A. LAMBIE, COUNTY ENGINEER J. D. PARKHURST, CHIEF ENGINEER  
 CO. SAN. DIST. NO. 2  
 APPROVED BY *Robert O. Heiser* 1/20/71 APPROVED BY *J. D. Parkhurst*  
 REGIONAL ENGINEER CHIEF ENGINEER

CHECKED BY *Robert O. Heiser* 1/20/71  
 REG. C.E. NO. 13623

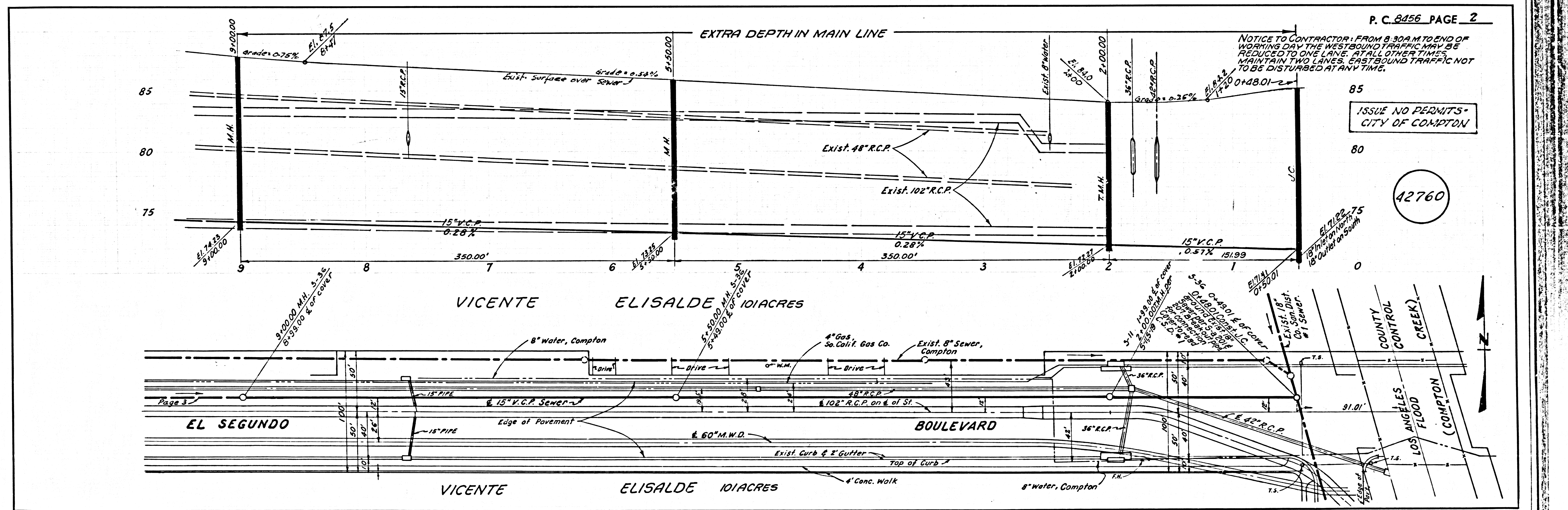
42759

J.L. 0250.02



INDEX MAP  
 TRACT No 25674  
 P.C. No 8456  
 SCALE: 1"=600'

NOTICE TO CONTRACTOR - CONT'D.  
 CONTRACTORS ARE CAUTIONED TO OBSERVE THE FOLLOWING RULE IN USING THE GRADE STAKES GIVEN ON THESE PLANS FOR PUTTING IN HILLS: THREE CONSECUTIVE POINTS THAT ARE SHOWN TO BE ON THE SAME PART OF A SLOPE MUST BE USED IN COMMON IN ORDER THAT ANY VARIATION OUT OF A PERFECT STRAIGHT GRADE MAY BE DETECTED AND IN CASE ANY SUCH DISCREPANCY IS FOUND, THE SAME MUST BE REPORTED. OTHERWISE THIS OFFICE WILL NOT BE RESPONSIBLE FOR ANY ERROR IN THE GRADE OF THE FINISHED WORK.



EXTRA DEPTH IN MAIN LINE

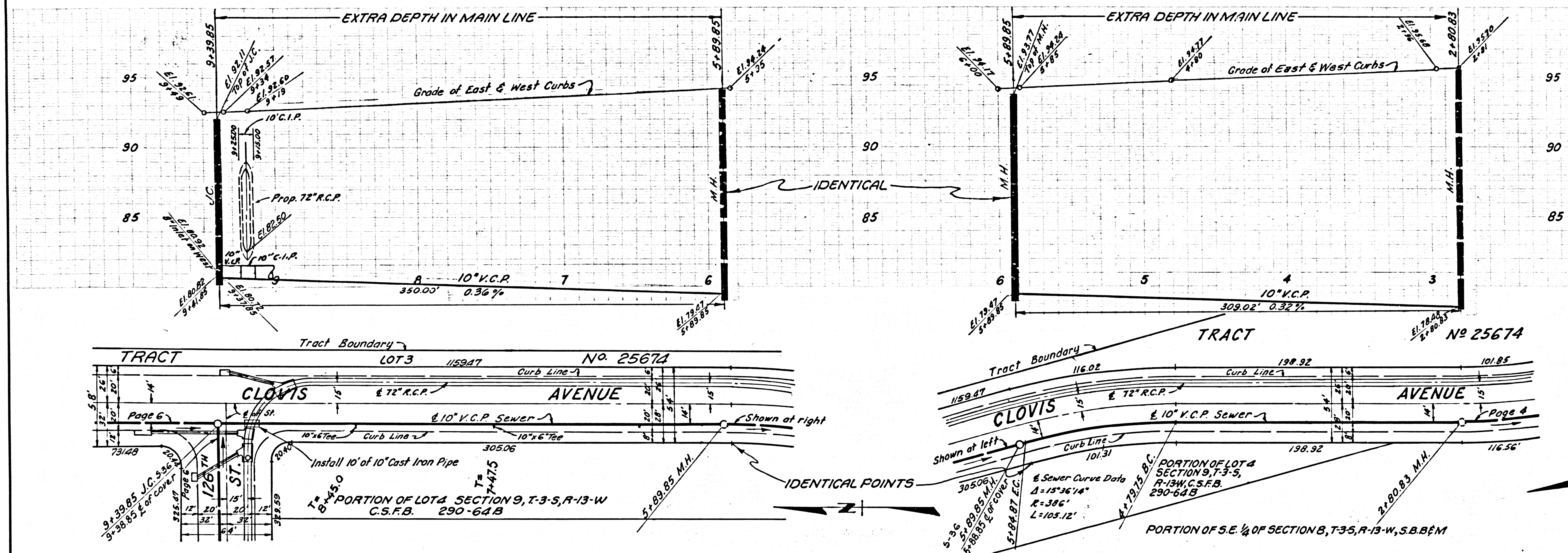
NOTICE TO CONTRACTOR: FROM 8:30 A.M. TO END OF WORKING DAY THE WESTBOUND TRAFFIC MAY BE REDUCED TO ONE LANE. AT ALL OTHER TIMES, MAINTAIN TWO LANES. EASTBOUND TRAFFIC NOT TO BE DISTURBED AT ANY TIME.

ISSUE NO PERMITS -  
 CITY OF COMPTON

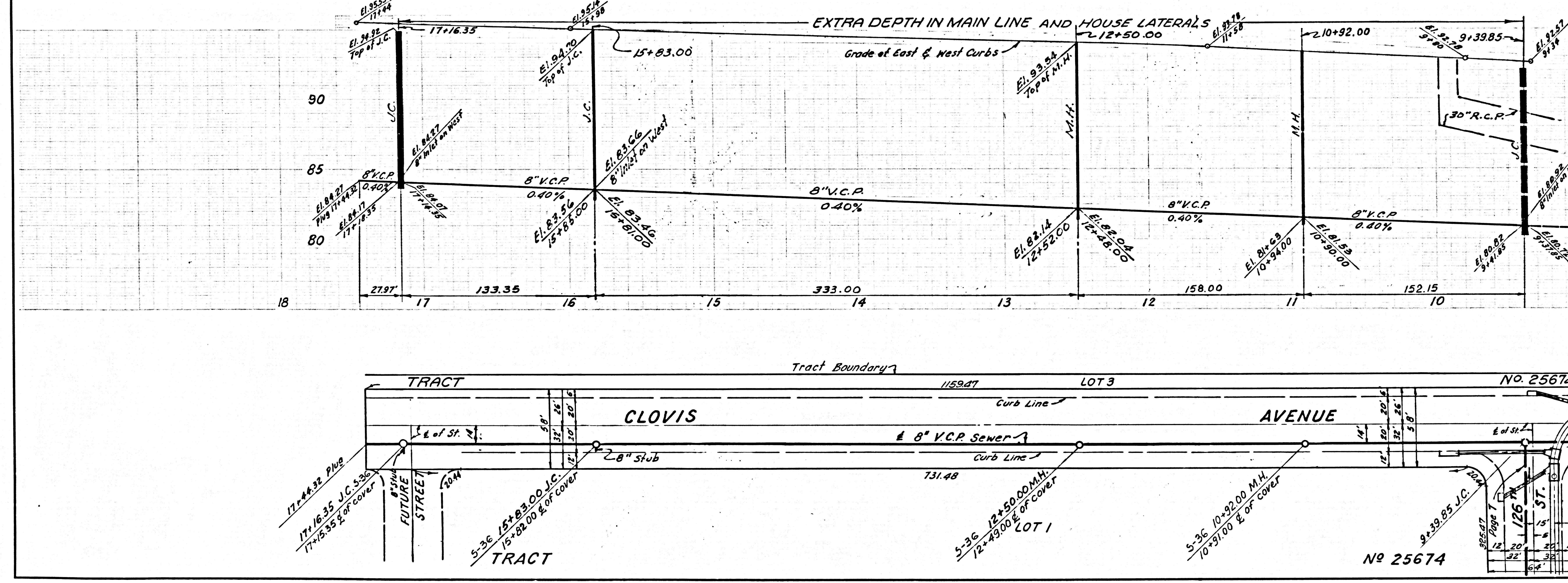
42760



NO CHARGE FOR CONNECTIONS



NO CHARGE FOR CONNECTIONS



NO CHARGE FOR CONNECTIONS

