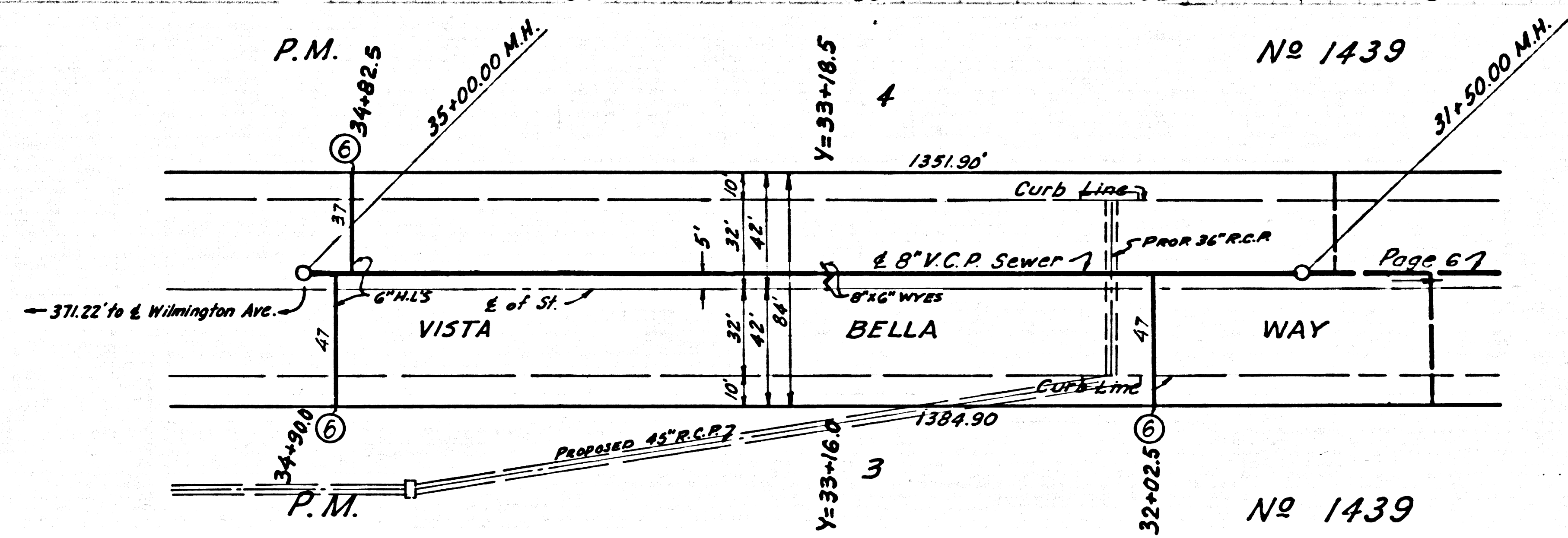
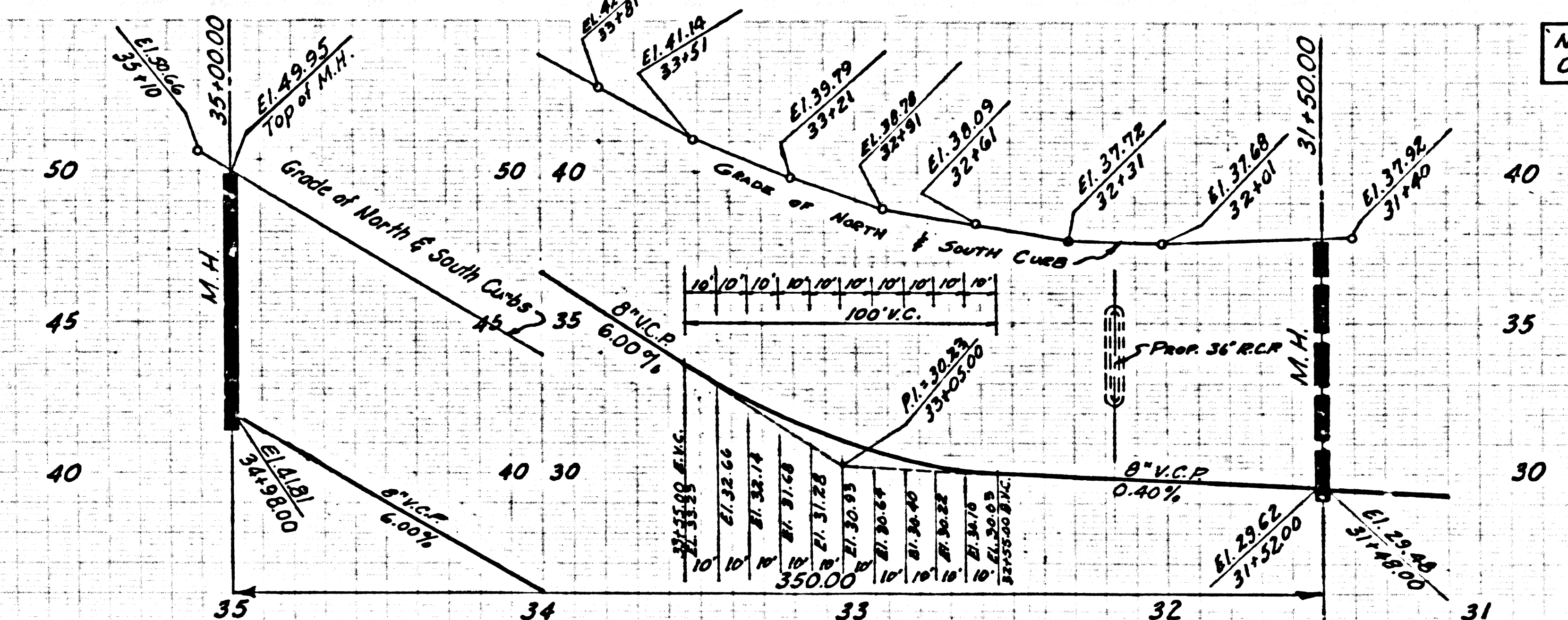
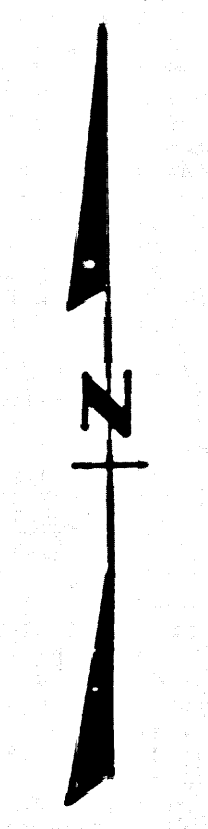


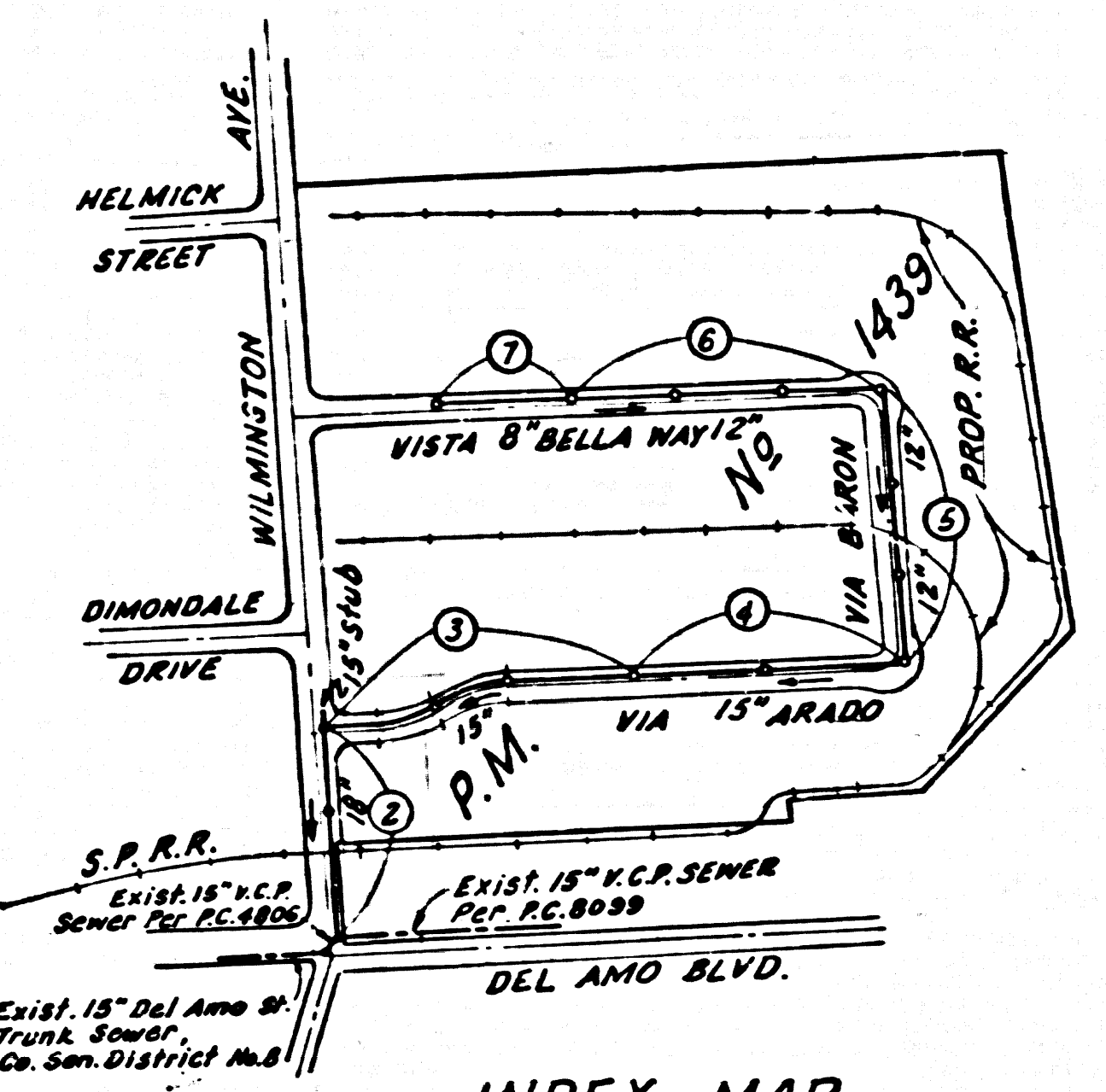
NO CHARGE FOR CONNECTIONS



41978



B.M. B.V. 263 ELEV. 76.796
 SPK. IN P.V.M.T. 19'± E/O WILMINGTON
 AVE. & 1890'S N/O DEL AMO BLVD.
 GARDENA QUAD. 19 65 Adj.



INDEX MAP
 P.M. NO 1439
 1"=600'

THE FOLLOWING STANDARD PLANS ON FILE IN THE OFFICE OF THE COUNTY ENGINEER SHALL APPLY IN THE CONSTRUCTION OF THIS PROJECT:

LEGEND

MIN. EXCAVATION SAFETY REQUIREMENTS	S. 2
BRICK MANHOLE	S. 3
NON REINFORCED PRECAST CONCRETE MANHOLE	S. 5
MANHOLE FRAME & COVER	S. 35
MANHOLE STEP	S. 17
BEDDING & SEWER PIPE	S. 23
CRADLING ENCASUREMENT	S. 23
WIRE & TEE SUPPORT	S. 26
ALLOWABLE TRENCH WIDTH	S. 33

County Sanitation Districts shall be notified prior to the following so that required inspections can be made (Phone 497-5229 - - 656-3097)

Acceptance of the project.

No connections for the disposal of industrial wastes shall be made to sewers shown on these drawings without written permission from the Chief Engineer and General Manager of the County Sanitation Districts.

DOMINGUEZ BLDG. DIST. NO. 13

- NOTE:
- PROVIDE STAKES ON THE PROPERTY LINE OR PROPERTY LINES PRODUCED AT RIGHT ANGLES TO THE SEWER LINE AT THE CENTER LINE OF EACH MANHOLE.
 - NO REPRESENTATIVE OF THE COUNTY ENGINEER WILL SURVEY OR LAY OUT ANY PORTION OF THE WORK.
 - THE PRIVATE ENGINEER SHALL FURNISH THE COUNTY ENGINEER WITH GRADE SHEETS AND STATIONING FOR ALL HOUSE LATERALS, AND "T" BRANCHES AND SHALL PROVIDE STAKES FOR THEM AT THEIR PROPER LOCATIONS WITH STATIONING PLAINLY MARKED. ALL HOUSE LATERALS SHALL BE CONSTRUCTED IN A STRAIGHT ALIGNMENT AT RIGHT ANGLES FROM THE MAIN LINE SEWER EXCEPT AS SHOWN ON THE PLANS. HOUSE LATERALS FROM CHIMNEYS SHALL NOT HAVE AN ANGLE OF LESS THAN 45° WITH THE MAIN LINE SEWER. ANY CHANGE IN ALIGNMENT SHALL BE REQUESTED BY WRITING BY THE PRIVATE ENGINEER.
 - THE PRIVATE ENGINEER SHALL FURNISH THE HOUSE LATERAL DEPTH AT THE PROPERTY LINE BELOW THE TOP OF CURB ELEVATION FOR EACH HOUSE LATERAL ON THE GRADE SHEET.
 - NO REVISIONS SHALL BE MADE IN THESE PLANS WITHOUT THE APPROVAL OF THE COUNTY ENGINEER.
 - THE CONTRACTOR SHALL NOTIFY THE CONSTRUCTION DIVISION BY TELEPHONE, MADISON 9-242, EXT. 81531, AT LEAST TWENTY-FOUR HOURS BEFORE STARTING ANY WORK UNDER THIS CONTRACT.
 - ALL STRUCTURES SHALL BE BUILT PER BRICK MANHOLES PER S. 3 OR PRECAST CONCRETE MANHOLES PER S. 5 & S. 6 EXCEPT AS NOTED.
 - USE STANDARD MANHOLE FRAMES AND COVERS, S. 35 EXCEPT AS NOTED.
 - MANHOLE TOPS IN UNIMPROVED RIGHTS-OF-WAY TO BE SIX INCHES ABOVE FINISHED GRADE.
 - USE EXTRA STRENGTH PIPE. ALL PIPE IS STANDARD DEPTH EXCEPT AS NOTED.
 - VITRIFIED CLAY PIPE JOINTS SHALL BE TYPE "O, T" OR "G" PER STD. SPEC. 208-2.
 - IF A POWER POLE IS WITHIN THREE FEET OF THE SEWER, THE SEWER SHALL BE ENCASED, PER S. 23, TWO FEET ON EACH SIDE FROM THE POINT OF INTERFERENCE.
 - IF DURING THE COURSE OF CONSTRUCTION IT IS DETERMINED THAT THERE IS LESS THAN FOUR FEET OF COVER OVER THE TOP OF A MAIN LINE OR HOUSE LATERAL V.C.P. SEWER WHICH IS NOT INDICATED ON THE PLANS, THE PIPE SHALL BE ENCASED PER S. 23, UNLESS OTHERWISE APPROVED BY THE COUNTY ENGINEER.
 - HOUSE LATERALS TO BE CONSTRUCTED WITH INVERTS AT PROPERTY LINE AS NOTED.
 - RESURFACE ALL TRENCHES WITHIN PAVED AREAS TO MEET L.A. COUNTY ROAD DEPT. OR CALIFORNIA STATE HIGHWAY REQUIREMENTS IN ACCORDANCE WITH PERMITS.
 - SEWERS TO BE TESTED FOR LEAKAGE PER SECTION 304.2-2.3 STD. SPEC.
 - REFER TO SECTION 7.10-4.1 OF THE STD. SPEC. REGARDING SAFETY ORDERS.
 - ALL JOINTS BETWEEN CAST IRON PIPE AND VITRIFIED CLAY PIPE SHALL BE MADE WITH A RUBBER SLEEVE JOINT, TYPE "C" OR "D" (WITH GUTTING IF NECESSARY) PER STD. SPEC. 208-2.
 - FIGURES IN CIRCLES AT END OF ALL LINES INDICATE DEPTH BELOW CURB GRADE AT STREET PROPERTY LINE (C)

NOTICE TO CONTRACTOR - CONT'D.

CONTRACTORS ARE CAUTIONED TO OBSERVE THE FOLLOWING RULE IN USING THE GRADE STAKES GIVEN BY THIS OFFICE FOR PUTTING IN PIPES. THREE CONSECUTIVE POINTS THAT ARE SHOWN TO BE ON THE SAME RATE OF SLOPE MUST BE USED IN COMMON IN ORDER THAT ANY VARIATION OUT OF A PERFECT STRAIGHT GRADE MAY BE DETECTED, AND IN CASE ANY SUCH DISCREPANCY IS FOUND, THE SAME MUST BE REPORTED. OTHERWISE THIS OFFICE WILL NOT BE RESPONSIBLE FOR ANY ERROR IN THE GRADE OF THE FINISHED WORK.

NOTICE TO CONTRACTOR

The existence and location of any underground utility pipes or structures shown on these plans are obtained by a search of the available records. To the best of my knowledge there are no existing utilities shown on these plans. The contractor is required to take due precautionary measures to protect the utility lines shown and any other lines not of record or not shown on these plans.

Serge J. Danks
 13560

COLLECT CHARGES AS INDICATED

TO BE CONSTRUCTED IN P.M. NO 1439

PRIVATE CONTRACT NO. 8462

W.S. 26

4 SHEETS, 7 PAGES

SCALE: VERT. 1"=4' HORIZ. 1"=40'

APRIL, 1970

PREPARED IN THE OFFICES OF

E.L. PEARSON & ASSOCIATES

By: *Serge J. Danks*
 REG. C.E. NO. 13560

FOR LEGEND SEE PLAN NO. S-1

NOTE: GRADES TO WHICH THIS IMPROVEMENT IS TO BE CONSTRUCTED ARE SHOWN ON PLANS AND PROFILES. GRADE POINTS FOR TOP OF CURBS, CENTER LINE OF STREETS, OR CENTER LINE OF ALLEYS ARE SHOWN BY CIRCLES ON PROFILES. AT ALL POINTS BETWEEN DESIGNATED POINTS THE GRADE SHALL BE ESTABLISHED SO AS TO CONFORM TO A STRAIGHT LINE DRAWN BETWEEN SAID DESIGNATED POINTS. ELEVATIONS ARE IN FEET ABOVE U.S.C. & G.S. MEAN SEA LEVEL DATUM OF 1929.

WORK SHALL BE CONSTRUCTED ACCORDING TO THE STANDARD SPECIFICATIONS FOR PUBLIC WORKS CONSTRUCTION (1970 ED.) P. 20-204. SPEC. FROM THE COUNTY OF LOS ANGELES DATED APRIL 9, 1970 AND SHALL BE SUPERSEDED ONLY IN THE PRESENCE OF THE COUNTY ENGINEER.

BEFORE WORK CAN BE STARTED, THE CONTRACTOR MUST OBTAIN A PERMIT TO EXCAVATE IN COUNTY STREETS FROM THE L.A. COUNTY ROAD DEPT., DISTRICT OFFICE NO. 8 AND PAY A FEE TO THE COUNTY ENGINEER, ROOM 303, COUNTY ENGINEERING BUILDING, 100 WEST SECOND STREET, OR PAID BY CHECK TO THE COUNTY OF LOS ANGELES, REGIONAL OFFICE, SUFFICIENT TO COVER THE COST OF CONSTRUCTION INSPECTION AND RECORD PLANS.

APPROVAL OF THIS PLAN BY THE COUNTY OF LOS ANGELES DOES NOT CONSTITUTE A REPRESENTATION AS TO THE ACCURACY OF THE LOCATION OF OR THE EXISTENCE OR NON-EXISTENCE OF ANY UNDERGROUND UTILITY PIPE, OR STRUCTURE WITHIN THE LIMITS OF THIS PROJECT. THIS NOTE APPLIES TO ALL PAGES.

IF WORK IS TO BE DONE IN A STATE HIGHWAY, A PERMIT MUST BE OBTAINED FROM THE STATE OF CALIFORNIA, DIVISION OF HIGHWAYS, 120 SOUTH SPRING STREET, LOS ANGELES, CALIFORNIA.

COUNTY OF LOS ANGELES, CALIFORNIA

JOHN A. LAMBE, COUNTY ENGINEER J. D. PARKHURST, CHIEF ENGINEER

APPROVED BY: *Robert J. Walker* 5-14-70 REGIONAL ENGINEER APPROVED BY: *J. D. Parkhurst* OFFICE ENGINEER

CHECKED BY: *Samuel E. Walker* 5/14/70 REG. C.E. NO. 10653

41972

NO CHARGE FOR CONNECTIONS

41973

