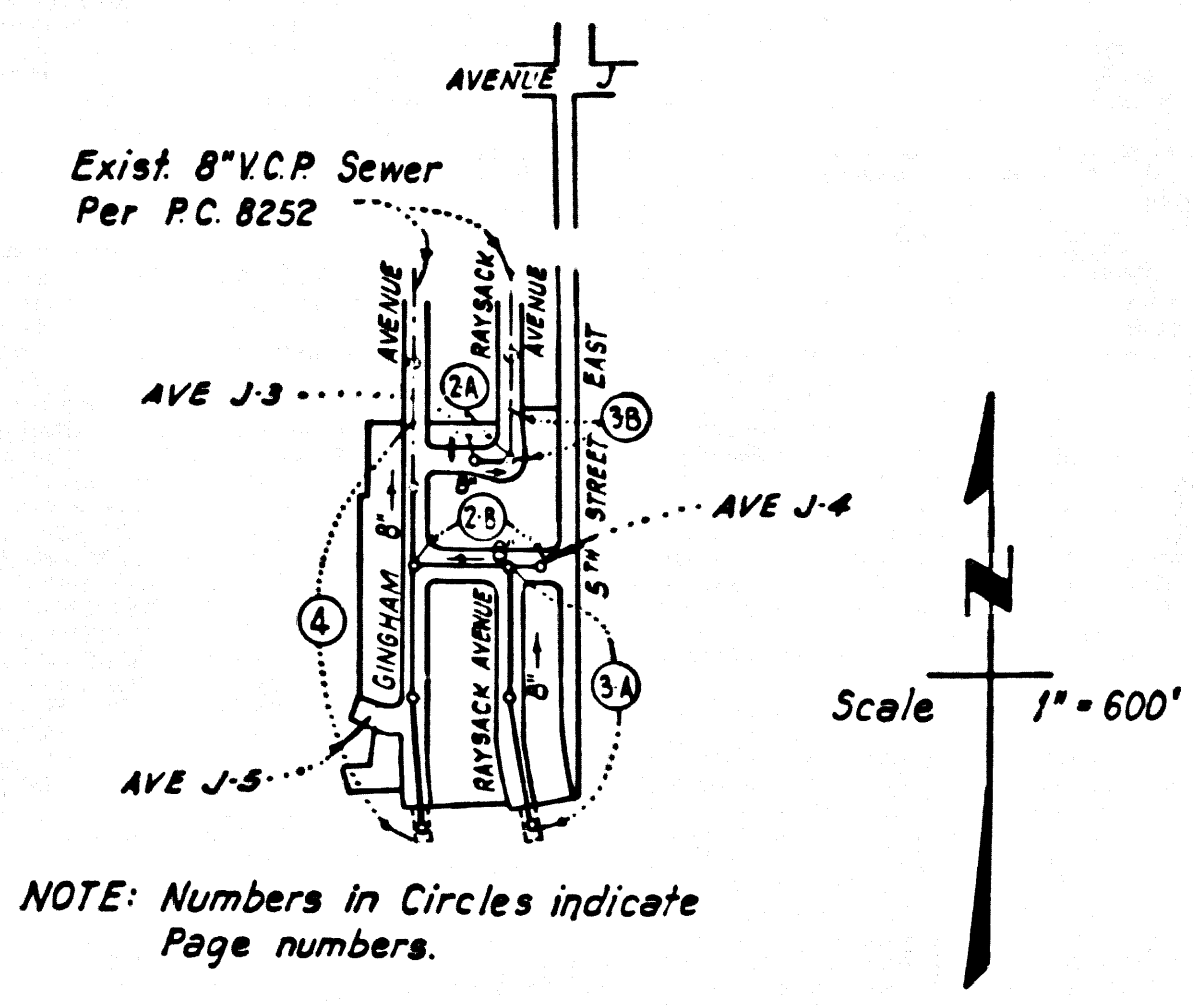


B.M. D.L. 66 ELEV. 2305.088
 L & B.N. of M.C.R. SE. Cor. 4th East
 & Ave J (Service Rev) 80' South &
 24' East of Center Line intersection
 LANCASTER QUAD. 19.02 (10)

PRIVATE ENGINEERS NOTICE TO CONTRACTORS
 The existence and location of any underground utility or structure shown on these plans are obtained by a search of the available records. To the best of our knowledge there are no existing utilities except as shown on this map. The contractor is required to take due precautionary measures to protect the utility lines shown and any other lines not of record or not shown on this map.

Martin A. Lieberman
 Martin A. Lieberman R.C.E. 13168



INDEX MAP
 P.C. 8469
 TRACT NO. 31057

LANCASTER BLDG. DIST. NO. 8.0

- NOTES:
- HOUSE LATERALS TO BE CONSTRUCTED WITH INVERTS AT PROPERTY LINE 4 FEET BELOW CURB GRADE (8" V.C.P. 48" DEPTH).
 - PROVIDE STAKES ON THE PROPERTY LINE OR PROPERTY LINES PRODUCED AT RIGHT ANGLES TO THE SEWER LINE AT THE CENTER LINE OF EACH MANHOLE.
 - NO REPRESENTATIVE OF THE COUNTY ENGINEER WILL SURVEY OR LAY OUT ANY PORTION OF THE WORK.
 - THE PRIVATE ENGINEER SHALL FURNISH THE COUNTY ENGINEER WITH GRADE SHEETS AND STATIONING FOR ALL HOUSE LATERALS AND "T" OR "T" BRANCHES AND SHALL PROVIDE STAKES FOR THEM AT THESE PROPER LOCATIONS WITH STATIONING PLAINLY MARKED. ALL HOUSE LATERALS SHALL BE CONSTRUCTED IN A STRAIGHT ALIGNMENT AT RIGHT ANGLES FROM THE MAIN LINE SEWER EXCEPT AS SHOWN ON THE PLANS. HOUSE LATERALS FROM CHIMNEYS SHALL NOT HAVE AN ANGLE OF LESS THAN 45° WITH THE MAIN LINE SEWER. ANY CHANGE IN ALIGNMENT SHALL BE REQUESTED IN WRITING BY THE PRIVATE ENGINEER.
 - THE PRIVATE ENGINEER SHALL FURNISH THE HOUSE LATERAL DEPTH AT THE PROPERTY LINE BELOW THE TOP OF CURB ELEVATION FOR EACH HOUSE LATERAL ON THE GRADE SHEET.
 - NO REVISIONS SHALL BE MADE IN THESE PLANS WITHOUT THE APPROVAL OF THE COUNTY ENGINEER.
 - THE CONTRACTOR SHALL NOTIFY THE CONSTRUCTION DIVISION BY TELEPHONE, MADISON 9-4242, EXT. 8158, AT LEAST TWENTY-FOUR HOURS BEFORE STARTING ANY WORK UNDER THIS CONTRACT.
 - ALL STRUCTURES SHALL BE EITHER BRICK MANHOLES PER S-2 OR PRECAST CONCRETE MANHOLES PER S-36 (8" V.C.P. 48" DEPTH).
 - "T" OR "T" BRANCHES MAY BE USED FOR CONNECTIONS TO MAINLINE SEWERS (8" V.C.P. 48" DEPTH).
 - MANHOLE TOPS IN UNIMPROVED RIGHTS OF WAY TO BE 8 1/2 INCHES ABOVE FINISHED GRADE.
 - USE EXTRA STRENGTH PIPE. ALL PIPE IS STANDARD DEPTH (8" V.C.P. 48" DEPTH).
 - VITRIFIED CLAY PIPE JOINTS SHALL BE THE "T", "T", OR "T" PER STANDARD SPECIFICATIONS SECTION 302.2.
 - IF A POWER POLE IS WITHIN THREE FEET OF THE SEWER, THE SEWER SHALL BE ENCASED, PER S-23, TWO FEET ON EACH SIDE FROM THE POINT OF INTERFERENCE.
 - IF DURING THE COURSE OF CONSTRUCTION IT IS DETERMINED THAT THERE IS LESS THAN FOUR FEET OF COVER OVER THE TOP OF A MAIN LINE OR HOUSE LATERAL V.C.P. SEWER WHICH IS NOT INDICATED ON THE PLANS, THE PIPE SHALL BE ENCASED PER S-23 UNLESS OTHERWISE APPROVED BY THE COUNTY ENGINEER.
 - INSURANCE ALL TRENCHES WITHIN PAVED AREAS TO MEET L.A. COUNTY ROAD DEPT. OR CALIFORNIA STATE HIGHWAY REQUIREMENTS IN ACCORDANCE WITH PERMITS.
 - SEWERS TO BE TESTED FOR LEAKAGE PER SECTION 304-2.3.7 OF THE STANDARD SPECIFICATIONS.
 - REFER TO SECTION 7-16.1 OF THE STANDARD SPECIFICATIONS, REGARDING SAFETY DEVICES.
 - ALL JOINTS BETWEEN CAST IRON PIPE AND VITRIFIED CLAY PIPE SHALL BE MADE WITH A RUBBER GASKET JOINT, TYPE "C" OR "D", WITH GASKETING AS NECESSARY PER STANDARD SPECIFICATIONS, SECTION 302.2.

THE FOLLOWING LATEST REVISED STANDARD PLANS ON FILE IN THE OFFICE OF THE COUNTY ENGINEER SHALL APPLY IN THE CONSTRUCTION OF THIS PROJECT.

MINIMUM PUBLIC SAFETY REQUIREMENTS	S-1
BRICK MANHOLE	S-2
NON-REINFORCED PRECAST CONCRETE MANHOLE	S-36
REINFORCED PRECAST CONCRETE MANHOLE	S-37
MANHOLE FRAME AND COVER	S-38
STANDARD MANHOLE STEP	S-39
SEWERING FOR SEWER PIPE	S-40
CRACKING AND ENCASEMENT	S-41
PIPE ON THE SUPPORT	S-42
ALLOWABLE TRENCH WIDTHS	S-43

County Sanitation Districts shall be notified prior to the following work which requires inspection and approval (Section 307-1.22b of S.C.S.D. 3007):
 Substances of the project.
 No assumptions for the dimensions of electrical meters shall be made as shown on these drawings without written permission from the District Engineer and District Engineer of the County Sanitation Districts.

PROFILE, ALIGNMENT AND GRADE OF
 SANITARY SEWERS P.C. 8469
 CONSTRUCTED IN PAGE 1

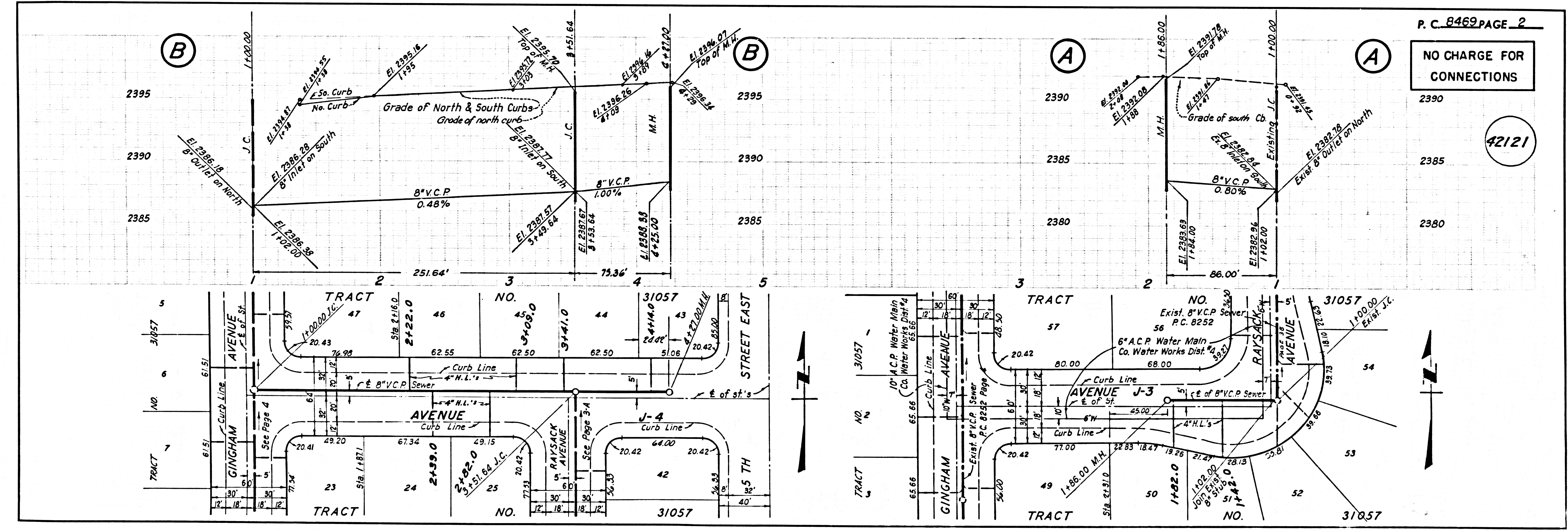
TRACT NO. 31057
 PRIVATE CONTRACT NO. 8469

W.S. 70
 2 SHEETS; 4 PAGES
 SCALE: VERT. 1"=4' HORIZ. 1"=40'
 JUNE, 1970
 PREPARED IN THE OFFICES OF
 JENNINGS ENGINEERING CO.
 4419 Van Nuys Blvd., Sherman Oaks, Calif. 91403
 By Martin A. Lieberman
 REG. C. E. NO. 13168

GRADES TO WHICH THIS IMPROVEMENT IS TO BE CONSTRUCTED ARE SHOWN ON PLANS AND PROFILES. GRADE POINTS FOR TOP OF CURB, CENTER LINE OF STREETS, OR CENTER LINE OF ALLEYS ARE SHOWN BY CIRCLES ON PROFILES AT ALL POINTS BETWEEN DESIGNATED POINTS. THE GRADE SHALL BE ESTABLISHED TO AS TO CONFORM TO A STRAIGHT LINE DRAWN BETWEEN SAID DESIGNATED POINTS. ELEVATIONS ARE IN FEET ABOVE U.S.C. & G.S. SEA LEVEL DATUM OF 1929.
 THESE PLANS SHALL BE CONSTRUCTED ACCORDING TO THE STANDARD SPECIFICATIONS FOR PUBLIC WORKS CONSTRUCTION 1970 EDITION AND COUNTY ENGINEER SPECIAL PROVISIONS FOR THE CONSTRUCTION OF SANITARY SEWERS DATED APR. 7, 1970, AND SHALL BE PROTECTED ONLY IN THE PRESENCE OF THE COUNTY ENGINEER.
 BEFORE WORK CAN BE STARTED, THE CONTRACTOR MUST OBTAIN A PERMIT TO EXCAVATE IN COUNTY STREETS FROM THE L.A. COUNTY ROAD DEPT., DISTRICT OFFICE NO. 1, 1, AND PAY A FEE TO THE COUNTY ENGINEER, ROOM 308, COUNTY ENGINEERING BUILDING, 100 WEST SECOND STREET, LOS ANGELES, CALIFORNIA. DISTRICT OFFICE NO. 1, 1, DISTRICT OFFICE. APPROVED TO COVER THE COST OF CONSTRUCTION INSPECTION AND RECORD PLANS.
 APPROVAL OF THIS PLAN BY THE COUNTY OF LOS ANGELES DOES NOT CONSTITUTE A REPRESENTATION AS TO THE ACCURACY OF THE LOCATION OF OR THE EXISTENCE OR NON-EXISTENCE OF ANY UNDERGROUND UTILITY PIPE, OR STRUCTURE WITHIN THE LIMITS OF THE PROJECT. THIS NOTE APPLIES TO ALL PAGES.
 IF WORK IS TO BE DONE IN A STATE HIGHWAY, A PERMIT MUST BE OBTAINED FROM THE STATE OF CALIFORNIA, DIVISION OF HIGHWAYS, 130 SOUTH SPRING STREET, LOS ANGELES, CALIFORNIA.

COUNTY OF LOS ANGELES, CALIFORNIA
 JOHN A. LAMBLE, COUNTY ENGINEER J. D. PARKHURST, CHIEF ENGINEER
 APPROVED BY [Signature] 9/11/70 APPROVED BY [Signature]
 COUNTY ENGINEER DISTRICT OFFICE ENGINEER
 CHECKED BY R.H. Kopeck 11/1/70
 REG. C.E. NO. 16742
 J.A. 0250.02

COLLECT CHARGES AS INDICATED



P.C. 8469 PAGE 2

NO CHARGE FOR CONNECTIONS

42121

