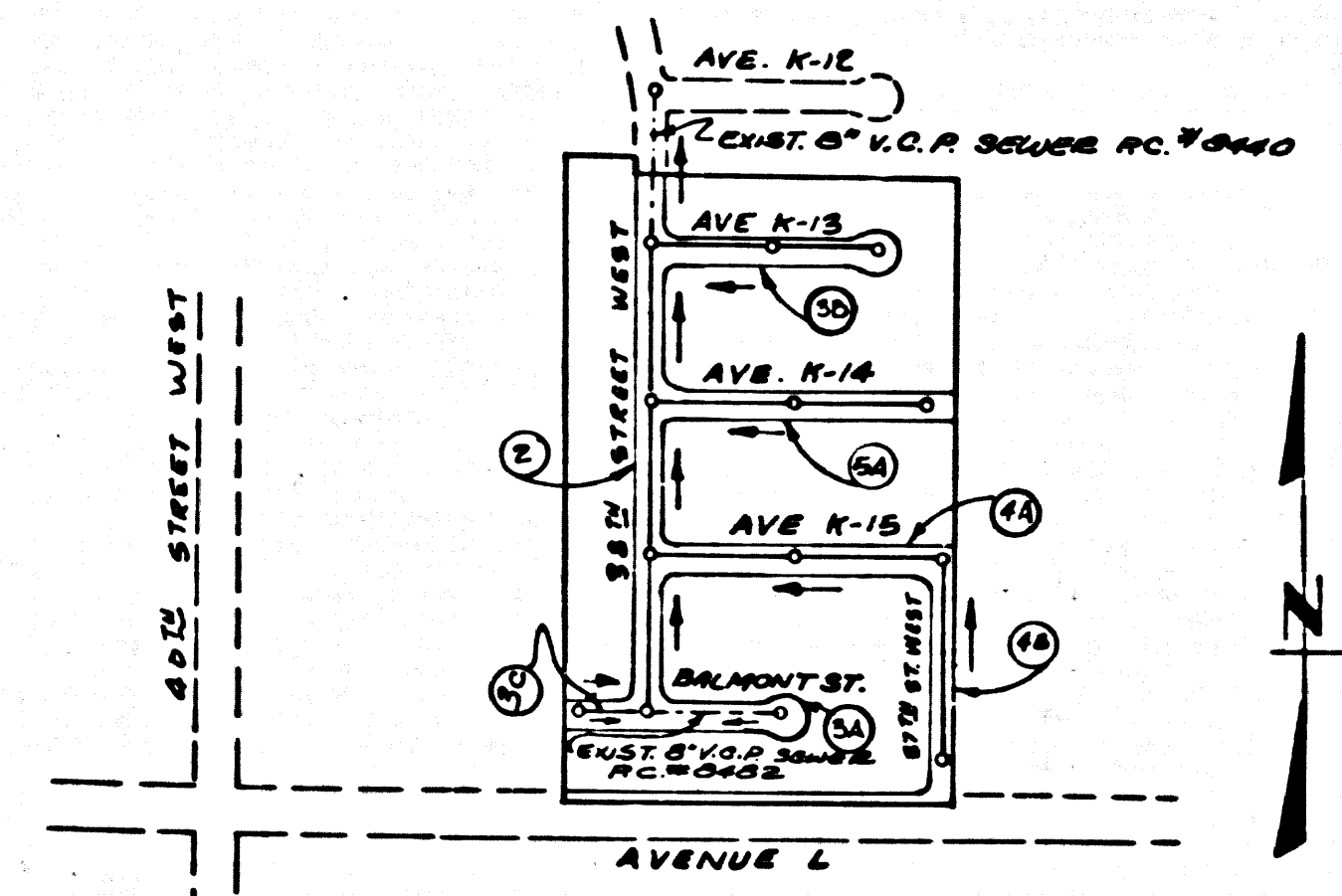


B.M. 31. No 388 ELEV. 2428.377
 CS Mon 2 inches Dia. 8' Int. of
 Avenue L and 40th Street West
 M.K.D. (T. 74, R. 12 W., E. 13 N., Sec. 25, 26, 27, 28, 29, 30, 31) S.E. 1/4 Sec. 25
 L.A. CO. S.E. QUAD. 1925



KEY MAP
 SCALE: 1" = 600'
 P.C. 8475
 TRACT No. 31034

No connections for the disposal of industrial wastes shall be made to sewer lines on these drawings without written permission of the Chief Engineer and General Manager of the County Sanitation Districts.

County Sanitation Districts shall be notified prior to the following on that written permission can be made. Phone 387-1825.

Acceptance of the project.

ISSUE NO. CONNECTION PERMITS UNTIL P.C. 8440 IS ACCEPTED FOR PUBLIC USE.

LANCASTER BLDG. DIST. NO. 8.0

PROFILE ALIGNMENT AND GRADE OF
SANITARY SEWERS PAGE 1
 P.C. 8475
 CONSTRUCTED IN

TRACT No. 31034
PRIVATE CONTRACT NO. 8475

W.S. 71
 3 SHEETS, 3 PAGES
 SCALE: VERT. 1" = 4' HORIZ. 1" = 40'
 JUNE 1970

PREPARED IN THE OFFICES OF
CONSOLIDATED ENGINEERING CO.
 8845 W. OLYMPIC BOULEVARD
 BEVERLY HILLS, CALIF.
 REG. C. E. NO. 10915

FOR LEGEND SEE PLAN NO. S-1

- NOTES:**
1. PROFILE STAKES ON THE PROPERTY LINE OR PROPERTY LINES PRODUCED AT RIGHT ANGLES TO THE SEWER LINE AT THE CENTER LINE OF EACH MANHOLE.
 2. NO REPRESENTATIVE OF THE COUNTY ENGINEER WILL SURVEY OR LAY OUT ANY PORTION OF THE WORK.
 3. THE PRIVATE ENGINEER SHALL FURNISH THE COUNTY ENGINEER WITH GRADE SHEETS AND STATIONING FOR ALL HOUSE LATERALS AND "Y" OR "T" BRANCHES AND SHALL PROVIDE STAKES FOR THESE AT THEIR PROPER LOCATIONS WITH STATIONING PLAINLY MARKED. ALL HOUSE LATERALS SHALL BE CONSTRUCTED IN A STRAIGHT ALIGNMENT AT RIGHT ANGLES FROM THE MAIN LINE SEWER EXCEPT AS SHOWN ON THE PLANS. HOUSE LATERALS FROM CHIMNEYS SHALL NOT HAVE AN ANGLE OF LESS THAN 45° WITH THE MAIN LINE SEWER. ANY CHANGE IN ALIGNMENT SHALL BE REQUESTED BY WRITING BY THE PRIVATE ENGINEER.
 4. THE PRIVATE ENGINEER SHALL MAINTAIN THE HOUSE LATERAL DEPTH AT THE PROPERTY LINE BELOW THE TOP OF CURB ELEVATION FOR EACH HOUSE LATERAL ON THE GRADE SHEET.
 5. NO REVISIONS SHALL BE MADE IN THESE PLANS WITHOUT THE APPROVAL OF THE COUNTY ENGINEER.
 6. THE CONTRACTOR SHALL NOTIFY THE CONSTRUCTION DIVISION BY TELEPHONE, HARBOR 9-0700, EXT. 8158, AT LEAST TWENTY-FOUR HOURS BEFORE STARTING ANY WORK UNDER THIS CONTRACT.
 7. ALL STRUCTURES SHALL BE SET IN ACCORDANCE WITH THE PRECAST CONCRETE MANUALS FOR S-35.
 8. "Y" OR "T" BRANCHES MAY BE USED FOR CONNECTION TO APPROVED JOINTS EXCEPT AS NOTED.
 - 9.
 10. USE EXTRA STRENGTH PIPE. ALL PIPE IS STANDARD DEPTH.
 11. HYDRANT CLAY PIPE JOINTS SHALL BE TYPE "D", "F", OR "G" PER STD. SPECIFICATIONS SECTION 208-2.
 12. IF A POWER POLE IS WITHIN THREE FEET OF THE SEWER, THE SEWER SHALL BE ENCASED, PER S-35, TWO FEET ON EACH SIDE FROM THE POINT OF INTERFERENCE.
 13. IF DURING THE COURSE OF CONSTRUCTION IT IS DETERMINED THAT THERE IS LESS THAN FOUR FEET OF COVER OVER THE TOP OF A MAIN LINE OR HOUSE LATERAL V.C.P. SEWER WHICH IS NOT INDICATED ON THE PLANS, THE PIPE SHALL BE ENCASED PER S-35, UNLESS OTHERWISE APPROVED BY THE COUNTY ENGINEER.
 14. HOUSE LATERALS TO BE CONSTRUCTED WITH INVERTS AT PROPERTY LINE 6 FEET BELOW CURB GRADE.
 15. REBARFACE ALL TRENCHES WITHIN PAVED AREAS TO MEET L.A. COUNTY ROAD DEPT. REQUIREMENTS IN ACCORDANCE WITH PERMITS.
 16. SEWERS TO BE TESTED FOR LEAKAGE PER SECTION 206-2.6.7 OF THE STANDARD SPECIFICATIONS, REGARDING SAFETY DEVICES. REFER TO SECTION 7-10.6.1 OF THE STANDARD SPECIFICATIONS, REGARDING SAFETY DEVICES.
 17. ALL JOINTS BETWEEN CAST IRON PIPE AND HYDRANT CLAY PIPE SHALL BE MADE WITH A RUBBER GASKET JOINT, TYPE "C" OR "D" (WITH BUSHING IF NECESSARY) PER STANDARD SPECIFICATIONS, SECTION 208-2.
 18. THE FOLLOWING LATEST REVISED STANDARD PLANS ON FILE IN THE OFFICE OF THE COUNTY ENGINEER SHALL APPLY IN THE CONSTRUCTION OF THIS PROJECT.

LEGEND

MINIMUM PUBLIC SAFETY REQUIREMENTS	1-1
BRICK MANHOLE	1-2
MAN-REINFORCED PRECAST CONCRETE MANHOLE	5-36
REINFORCED IRONPIPE MANHOLE	5-36
MANHOLE FRAME AND COVER	5-36
STANDARD MANHOLE PIPE	5-17
REBARFACE FOR ROAD PINE	5-17
CELEBRATE AND ENCASEMENT	5-18
PIPE ON THE SURFACE	5-18
ALLOWABLE TRENCH WIDTHS	5-33

NOTICE TO CONTRACTOR

The existence and location of any underground utility lines or structures shown on these plans are obtained by a search of the available records. To the best of my knowledge there are no existing utilities except as shown on these plans. The contractor is required to take due precautionary measures to protect the utility lines shown and any other lines not of record or not shown on these plans.

Emiguel Alvarez
 REG. C.E. NO. 10915

NOTE:
 GRADES TO WHICH THIS IMPROVEMENT IS TO BE CONSTRUCTED ARE SHOWN ON PLANS AND PROFILE. GRADE POINTS FOR TOP OF CURB, CENTER LINE OF STREET, OR CENTER LINE OF ALLEYS ARE SHOWN BY CIRCLES ON PROFILES. AT ALL POINTS BETWEEN DESIGNATED POINTS THE GRADE SHALL BE ESTABLISHED SO AS TO CONFORM TO A STRAIGHT LINE DRAWN BETWEEN SAID DESIGNATED POINTS. ELEVATIONS ARE IN FEET ABOVE M.S.L. & C.S. SEA LEVEL DATUM OF 1929.

THIS DRAWING AND THE DATA HEREON ARE HEREBY MADE A PART OF THE SPECIFICATIONS. THE CONTRACTOR SHALL BE RESPONSIBLE FOR THE PROPER INTERPRETATION OF THE SPECIFICATIONS AND FOR THE PROPER CONSTRUCTION OF THE WORK. THE CONTRACTOR SHALL BE RESPONSIBLE FOR THE PROPER INTERPRETATION OF THE SPECIFICATIONS AND FOR THE PROPER CONSTRUCTION OF THE WORK. THE CONTRACTOR SHALL BE RESPONSIBLE FOR THE PROPER INTERPRETATION OF THE SPECIFICATIONS AND FOR THE PROPER CONSTRUCTION OF THE WORK.

APPROVAL OF THIS PLAN BY THE COUNTY OF LOS ANGELES DOES NOT CONSTITUTE A REPRESENTATION AS TO THE ACCURACY OF THE LOCATION OF THE EXISTENCE OR NON-EXISTENCE OF ANY UNDERGROUND UTILITY PIPE, OR STRUCTURE WITHIN THE LIMITS OF THIS PROJECT. THIS NOTE APPLIES TO ALL PAGES.

IF WORK IS TO BE DONE IN A STREET HIGHWAY, A PERMIT MUST BE OBTAINED FROM THE STATE OF CALIFORNIA, DIVISION OF HIGHWAYS, 126 SOUTH SPRING STREET, LOS ANGELES, CALIFORNIA.

COUNTY OF LOS ANGELES, CALIFORNIA
 JOHN A. LAMBE, COUNTY ENGINEER
 APPROVED BY: *John A. Lambe*
 REG. CIVIL ENGINEER

J. D. PARKHURST, CHIEF ENGINEER
 APPROVED BY: *J. D. Parkhurst*
 CO. SEAL NO. 14
 OFFICE ENGINEER

CHECKED BY: *Richard C. Kopych*
 REG. C.E. NO. 10722

41853

J. N. 0850.08

