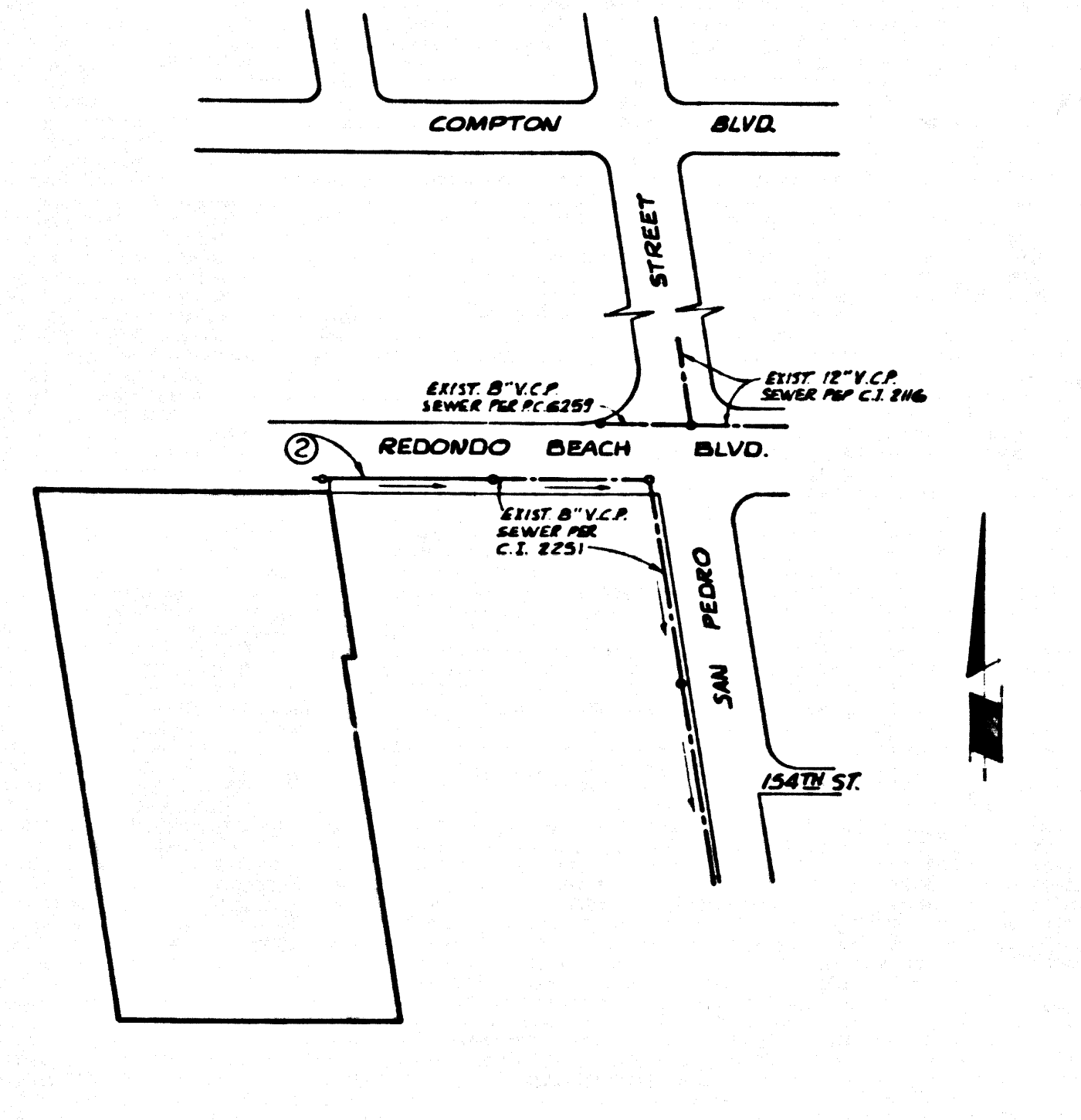


B.M. BY 7110 ELEV. 73.408
 ROOM 112 W. CO. 1 FT. S. B.C.R. @ SW COR.
 AVALON BLVD. + 15478 ST. SIFT 3. + 40 FT. W.
 APPROX. C/L. INT.
 GARDENA QUAD. 1965



INDEX MAP
 P.C. 8480
 SCALE: 1"=200'

PRIVATE ENGINEERS NOTICE TO CONTRACTOR
 THE EXISTENCE AND APPROXIMATE LOCATION OF UNDERGROUND UTILITIES OR STRUCTURES SHOWN ON THESE PLANS WHERE DETERMINED BY A SEARCH OF THE AVAILABLE PUBLIC RECORDS TO THE BEST OF OUR KNOWLEDGE THERE ARE NO EXISTING UNDERGROUND UTILITIES OR STRUCTURES EXCEPT AS SHOWN ON THESE PLANS. THE CONTRACTOR IS REQUIRED TO TAKE DUE PRECAUTIONARY MEASURES TO PROTECT THE UTILITIES OR STRUCTURES NOT OF RECORD OR NOT SHOWN ON THESE PLANS.

Robert R. Flores
 ROBERT R. FLORES R.C.E. No. 11349

THE FOLLOWING LATEST STANDARD PLANS ON FILE IN THE OFFICE OF THE COUNTY ENGINEER SHALL APPLY IN THE CONSTRUCTION OF THIS PROJECT:

LEGEND	5-1
MINIMUM PUBLIC SAFETY REQUIREMENTS	5-2
BRICK MANHOLE	5-3
NON-REINFORCED PRECAST CONCRETE MANHOLE	5-4
REINFORCED PRECAST CONCRETE MANHOLE	5-5
MANHOLE FRAME AND COVER	5-6
STANDARD MANHOLE STEP	5-7
BEDDING FOR SEWER PIPE	5-8
CRACKING AND ENCASEMENT	5-9
WYE OR TEE SUPPORT	5-10
ALONGSIDE TRENCH WIDTHS	5-11

LENNOX BLDG. DIST. NO. 7

- NOTE:
1. PROFILE STAKES ON THE PROPERTY LINE OR PROPERTY LINES PRODUCED AT RIGHT ANGLES TO THE SEWER LINE AT THE CENTER LINE OF EACH MANHOLE.
 2. NO REPRESENTATIVE OF THE COUNTY ENGINEER WILL SURVEY OR LAY OUT ANY PORTION OF THE WORK.
 3. THE PRIVATE ENGINEER SHALL FURNISH THE COUNTY ENGINEER WITH GRADE SHEETS AND STATIONING FOR ALL HOUSE LATERALS AND "T" OR "Y" BRANCHES AND SHALL PROVIDE STAKES FOR THEM AT THEIR PROPER LOCATIONS WITH STATIONING PLAINLY MARKED. ALL HOUSE LATERALS SHALL BE CONSTRUCTED IN A STRAIGHT ALIGNMENT AT RIGHT ANGLES FROM THE MAIN LINE SEWER EXCEPT AS SHOWN ON THE PLANS. HOUSE LATERALS FROM CHIMNEYS SHALL NOT HAVE AN ANGLE OF LESS THAN 45° WITH THE MAIN LINE SEWER. ANY CHANGE IN ALIGNMENT SHALL BE REQUESTED IN WRITING BY THE PRIVATE ENGINEER.
 4. THE PRIVATE ENGINEER SHALL FURNISH THE HOUSE LATERAL DEPTH AT THE PROPERTY LINE BELOW THE TOP OF CURB ELEVATION FOR EACH HOUSE LATERAL ON THE GRADE SHEET.
 5. NO REVISIONS SHALL BE MADE IN THESE PLANS WITHOUT THE APPROVAL OF THE COUNTY ENGINEER.
 6. THE CONTRACTOR SHALL NOTIFY THE CONSTRUCTION DIVISION BY TELEPHONE, RADISON 9-4707, EXT. 81581, AT LEAST TWENTY-FOUR HOURS BEFORE STARTING ANY WORK UNDER THIS CONTRACT.
 7. ALL STRUCTURES SHALL BE EITHER BRICK MANHOLES PER 5-3 OR PRECAST CONCRETE MANHOLES PER 5-4 OR 5-5, EXCEPT AS NOTED.
 8. USE STANDARD MANHOLE FRAMES AND COVERS, 5-5 EXCEPT AS NOTED.
 9. MANHOLE TOPS IN UNIMPROVED RIGHTS-OF-WAY TO BE SIX INCHES ABOVE FINISHED GRADE.
 10. USE EXTRA STRENGTH PIPE, ALL PIPE IS STANDARD DEPTH EXCEPT AS NOTED.
 11. VITRIFIED CLAY PIPE JOINTS SHALL BE TYPE "D", "F" OR "H" PER STD. SPECS., SEC. 608-2.
 12. IF A POWER POLE IS WITHIN THREE FEET OF THE SEWER, THE SEWER SHALL BE ENCASED, PER 5-23, TWO FEET ON EACH SIDE FROM THE POINT OF INTERFERENCE.
 13. IF DURING THE COURSE OF CONSTRUCTION IT IS DETERMINED THAT THERE IS LESS THAN FOUR FEET OF COVER OVER THE TOP OF A MAIN LINE OR HOUSE LATERAL V.C.P. SEWER WHICH IS NOT INDICATED ON THE PLANS, THE PIPE SHALL BE ENCASED PER 5-23, UNLESS OTHERWISE APPROVED BY THE COUNTY ENGINEER.
 14. HOUSE LATERALS TO BE CONSTRUCTED AT A 40° ANGLE PER FT. TO PROPERTY LINE.
 15. RESURFACE ALL TRENCHES WITHIN PAVED AREAS TO MEET L.A. COUNTY ROAD DEPT. OR CALIFORNIA STATE HIGHWAY REQUIREMENTS IN ACCORDANCE WITH PERMITS.
 16. SEWERS TO BE TESTED FOR LEAKAGE PER SECTION 106.117 UNIFORM STANDARD SPECIFICATIONS.
 17. REFER TO SECTION 7-10.4.1 OF THE STD. SPECS. REGARDING SAFETY CHECKERS.
 18. SPECIAL BACKFILL IN DESIGNATED AREAS.
 19. IF BACKFILL TRENCH AND BRACKS OTHER THAN SHOWN SO AS TO ACHIEVE THE NATURAL OR FINISHED GRADES AND SLOPES SHOWN ON THE GRADING PLAN APPROVED FOR THIS TRACT BY THE BUILDING AND SAFETY DIVISION.
 20. ALL BACKFILL AND PATCH REPAIRS SHALL BE COMPACTED TO A MINIMUM OF 90% OF MAXIMUM DENSITY PER A.S.T.M. STAND. AND METHOD OF TEST SHOWN AT ALL JOINTS. ACCEPTABLE CERTIFICATION OF BACK COMPACTOR SHALL BE SUBMITTED TO THE CONSTRUCTION DIVISION.

County Sanitation Districts shall be notified prior to the following work that full scale investigations can be made (Phone 809-3828 - 6506-5097)

Acceptance of the project.

COLLECT CHARGES AS INDICATED

No connections for the disposal of industrial wastes shall be made to sewers shown on these drawings without written authorization from the Chief Engineer and General Manager of the County Sanitation Districts.

PROFILE ALIGNMENT AND GRADE OF
SANITARY SEWERS P.C. 8480
 TO BE CONSTRUCTED IN PAGE 1

REDONDO BEACH BLVD.
PRIVATE CONTRACT NO. 8480

W.S. 26
 1 SHEET; 2 PAGES
 SCALE: HORIZ. 1"=40' VERT. 1"=4'
 APRIL, 1970
 PREPARED IN THE OFFICES OF
KEMMERER ENGR. CO. INC.
 6705 S. PAINTER AVE., WHITTIER, CALIF.
 BY: Robert R. Flores
 REG. C. E. NO. 11349
 FOR LEGEND SEE PLAN NO. S-1

NOTE:
 GRADES TO WHICH THIS IMPROVEMENT IS TO BE CONSTRUCTED ARE SHOWN ON PLANS AND PROFILE GRADE POINTS FOR TOP OF CURBS, CENTER LINE OF STREETS OR CENTER LINE OF ALLEYS ARE SHOWN BY CHECKS ON PROFILE. AT ALL POINTS BETWEEN DESIGNATED POINTS THE GRADE SHALL BE ESTABLISHED SO AS TO CONFORM TO A STRAIGHT LINE DRAWN BETWEEN SAID DESIGNATED POINTS. ELEVATIONS ARE IN FEET ABOVE U.S.C. & G.S. SEA LEVEL UNLESS OTHERWISE NOTED.
 THIS DRAWING AND THE DATA HEREON ARE HEREBY MADE A PART OF THE SPECIFICATIONS FOR PUBLIC WORKS CONSTRUCTION (1960 EDITION) AND COUNTY ENGINEER SPECIFICATIONS FOR THE CONSTRUCTION OF SANITARY SEWERS (DATED APRIL 7, 1970) AND SHALL BE PROTECTED UNDER THE PENALTY OF THE COUNTY ENGINEER'S OFFICE.
 BEFORE WORK CAN BE STARTED, THE CONTRACTOR MUST OBTAIN A PERMIT TO EXCAVATE IN COUNTY STREETS FROM THE L.A. COUNTY ROAD DEPT., DISTRICT OFFICE AND PAY A FEE TO THE COUNTY ENGINEER, ROOM 306, COUNTY ENGINEERING BUILDING, 100 WEST SECOND STREET, SOUTH WAREHOUSE, LOS ANGELES, CALIFORNIA. THE PERMIT SHALL BE RETURNED TO THE COUNTY ENGINEERING DIVISION AND RECORDS PLANS.
 APPROVAL OF THIS PLAN BY THE COUNTY OF LOS ANGELES DOES NOT CONSTITUTE A REPRESENTATION AS TO THE ACCURACY OF THE LOCATION OF OR THE EXISTENCE OR NON-EXISTENCE OF ANY UNDERGROUND UTILITY PIPE OR STRUCTURE WITHIN THE LIMITS OF THE PROJECT. THIS NOTE APPLIES TO ALL ALLEYS, STREETS OR STRUCTURES WITHIN THE LIMITS OF THE PROJECT.
 IF WORK IS TO BE DONE IN A STATE HIGHWAY, A PERMIT MUST BE OBTAINED FROM THE STATE OF CALIFORNIA, DIVISION OF HIGHWAYS, 120 SOUTH SPRING STREET, LOS ANGELES, CALIFORNIA.

COUNTY OF LOS ANGELES, CALIFORNIA
 JOHN A. LAMBIE, COUNTY ENGINEER J. D. PARKHURST, CHIEF ENGINEER
 CO. 501 915 790
 APPROVED BY: Robert R. Flores REG. C. E. NO. 11349 APPROVED BY: J. D. Parkhurst OFFICE ENGINEER

CHECKED BY: Edward J. Volz 5/13/70
 REG. C.E. NO. 10623

41769

P. C. 8480 PAGE 2

COLLECT CHARGES AS INDICATED

