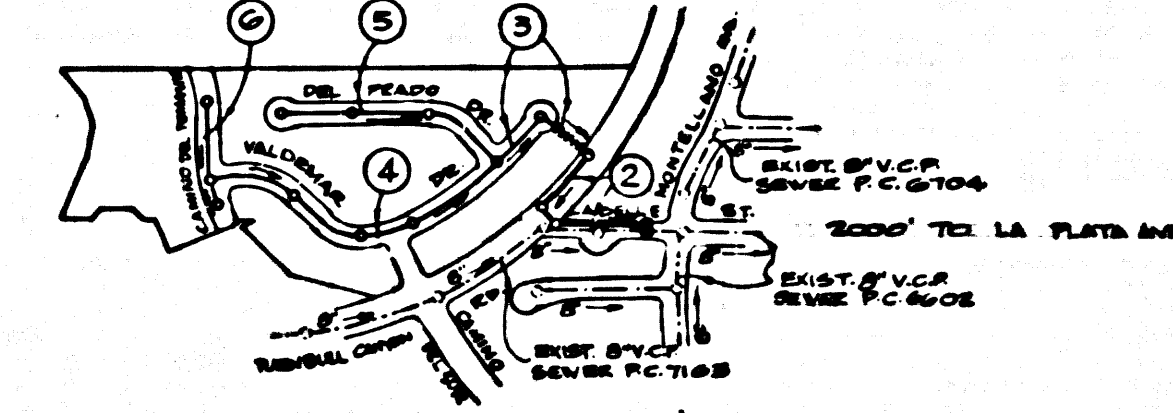


B.M. B.G. 1010 ELEV. 502.18
 R.O. B.M. TAG N CURB 1 FT. E. P.C.E. 0
 NE COR. LOS ALTOS DR. & LA CUESTA AVE.
 20 FT. N. & 66 FT. E. & INT.
 WHITTIER QUAD. 1965



INDEX MAP
 SCALE 1" = 200'
 P.C. 8485

THE FOLLOWING LATEST REVISED STANDARD PLANS ON FILE IN THE OFFICE OF THE COUNTY ENGINEER SHALL APPLY IN THE CONSTRUCTION OF THIS PROJECT

LEGEND	3-1
MINIMUM PUBLIC SAFETY REQUIREMENTS	3-2
SEWER MANHOLES	3-3
NON-REINFORCED PRECAST CONCRETE MANHOLE	3-3
MANHOLE FRAME AND COVER	3-3
STANDARD MANHOLE STEP	3-7
BEDDING FOR SEWER PIPE	3-11
CRADLING AND ENCASEMENT	3-23
NYS OR TEE SUPPORT	3-23
ALLOWABLE TRENCH WIDTH	3-23

DOUBLE VERTICAL SCALE LA PUENTE BLDG. DIST. NO. 2

PROFILE ALIGNMENT AND GRADE OF
SANITARY SEWERS PAGE 1
 CONSTRUCTED IN
TRACT No 25080

PRIVATE CONTRACT NO. 8485

W.S. 37
 3 SHEETS, 6 PAGES
 SCALE: HORIZ. 1" = 40' VERT. 1" = 4'
 DECEMBER, 1970
 PREPARED IN THE OFFICES OF
THOMPSON ENGINEERING, INC.
 BY *James C. Thomson*
 REG. C. E. NO. 3244

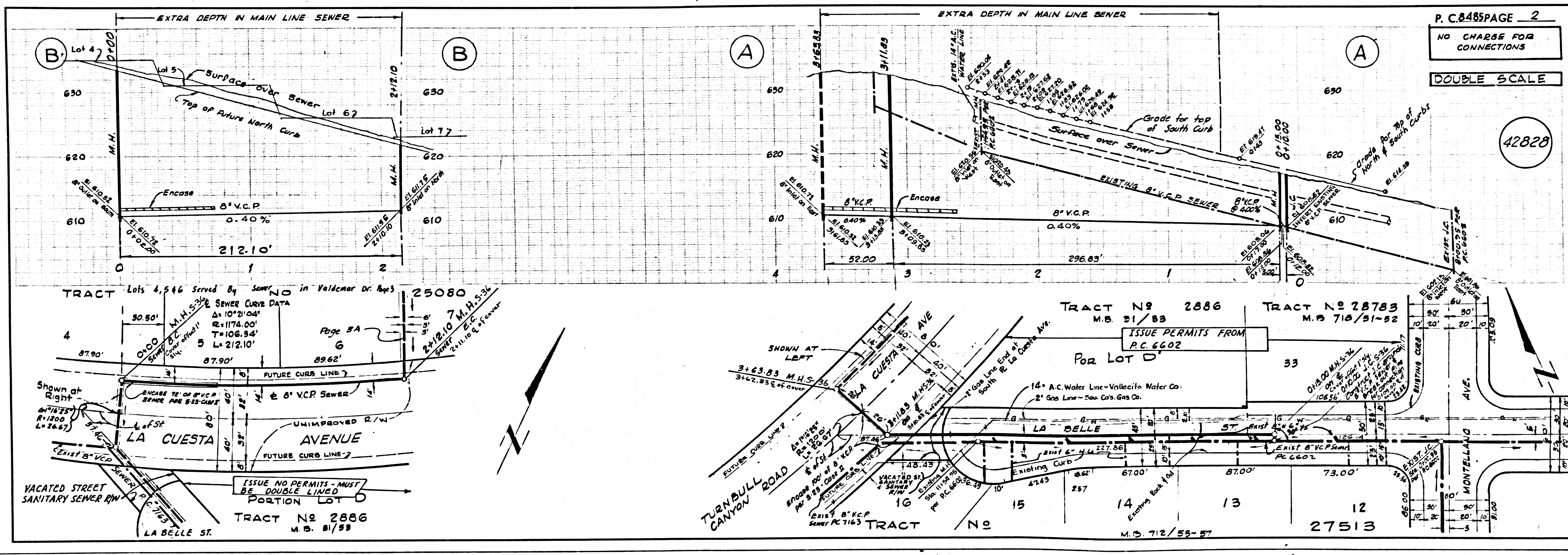
42827

NOTE:
 1. PROVIDE STAKES ON THE PROPERTY LINE OR PROPERTY LINES PRODUCED AT RIGHT ANGLES TO THE SEWER LINE AT THE CENTER LINE OF EACH MANHOLE.
 2. NO REPRESENTATIVE OF THE COUNTY ENGINEER WILL SURVEY OR LAY OUT ANY PORTION OF THE WORK.
 3. THE PRIVATE ENGINEER SHALL FURNISH THE COUNTY ENGINEER WITH GRADE SHEETS AND STATIONING FOR ALL HOUSE LATERALS AND T-OR-Y BRANCHES AND SHALL PROVIDE STAKES FOR THEM AT THESE PROPER LOCATIONS WITH ELEVATIONS PLAINLY MARKED. ALL HOUSE LATERALS SHALL BE CONSTRUCTED IN A STRAIGHT ALIGNMENT AT RIGHT ANGLES FROM THE MAIN LINE SEWER EXCEPT AS SHOWN ON THE PLANS. HOUSE LATERALS FROM CURBSIDE SHALL NOT HAVE AN ANGLE OF LESS THAN 45° WITH THE MAIN LINE SEWER. ANY CHANGE IN ALIGNMENT SHALL BE REQUESTED BY WRITING BY THE PRIVATE ENGINEER.
 4. THE PRIVATE ENGINEER SHALL FURNISH THE HOUSE LATERAL DEPTH AT THE PROPERTY LINE BELOW THE TOP OF CURB ELEVATION FOR EACH HOUSE LATERAL ON THE GRADE SHEET.
 5. NO DIVERSIONS SHALL BE MADE IN THESE PLANS WITHOUT THE APPROVAL OF THE COUNTY ENGINEER.
 6. THE CONTRACTOR SHALL NOTIFY THE CONSTRUCTION DIVISION BY TELEPHONE, MADISON 9-4747, EXT. 8131, AT LEAST TWENTY-FOUR HOURS BEFORE STARTING ANY WORK UNDER THIS CONTRACT.
 7. ALL STRUCTURES SHALL BE BUILT TO THE STANDARD SPECIFICATIONS FOR PRECAST CONCRETE MANHOLES PER S-26, EXCEPT AS NOTED.
 8. MANHOLE TOPS IN UNIMPROVED RIGHTS-OF-WAY TO BE SIX INCHES ABOVE FINISHED GRADE.
 9. WETTED CLAY PIPE JOINTS SHALL BE TYPE "O", "V" OR "C" PER STANDARD SPEC. 208-2.
 10. IF A POWER POLE IS WITHIN THREE FEET OF THE SEWER, THE SEWER SHALL BE ENCASED PER S-25 CASE 8, TWO FEET ON EITHER SIDE FROM THE POINT OF INTERFERENCE.
 11. IF DURING THE COURSE OF CONSTRUCTION IT IS DETERMINED THAT THERE IS LESS THAN FOUR FEET OF COVER OVER THE TOP OF A MAIN LINE OR HOUSE LATERAL V.C.P. SEWER WHICH IS NOT INDICATED ON THE PLANS, THE PIPE SHALL BE ENCASED PER S-25 UNLESS OTHERWISE APPROVED BY THE COUNTY ENGINEER.
 12. HOUSE LATERALS TO BE CONSTRUCTED WITH INVERTS AT PROPERTY LINE OR ... FEET BELOW CURB GRADE EXCEPT AS NOTED.
 13. REINFORCE ALL TRENCHES WITHIN PAVED AREAS TO MEET L.A. COUNTY ROAD DEPT. OR CALIFORNIA STATE HIGHWAY REQUIREMENTS IN ACCORDANCE WITH PERMITS.
 14. SEWERS TO BE TESTED FOR LEAKAGE PER SECTION 206-2-11 STD. SPECS. AND SPECIAL PROVISIONS.
 15. SEWER TO SECTION 7-10-41 OF STD. SPECS. REGARDING SAFETY ORDERS.
 16. ALL JOINTS BETWEEN CAST IRON PIPE AND WETTED CLAY PIPE SHALL BE MADE WITH RUBBER SLEEVES JOINT TYPE "O" OR "V" WITH REINFORCEMENT PER STD. SPECS. 208-2.
 17. NYS OR TEE SUPPORTS MAY BE USED FOR CONNECTIONS TO MAINLINE SEWERS EXCEPT AS NOTED.

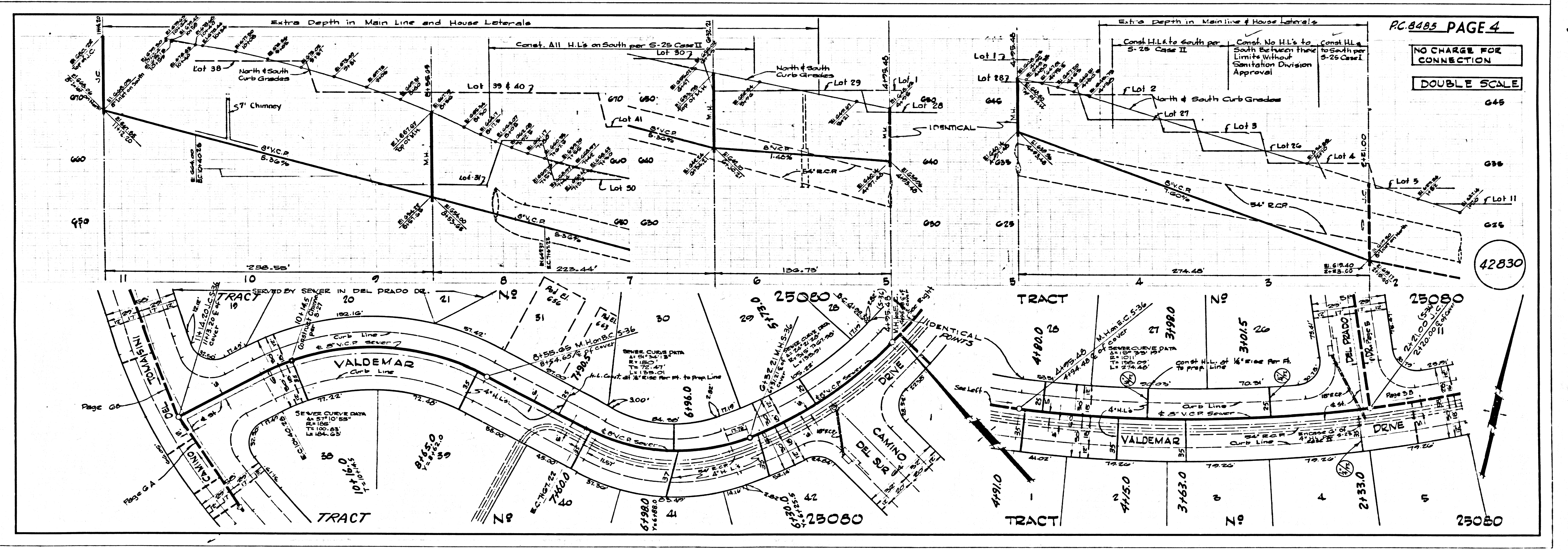
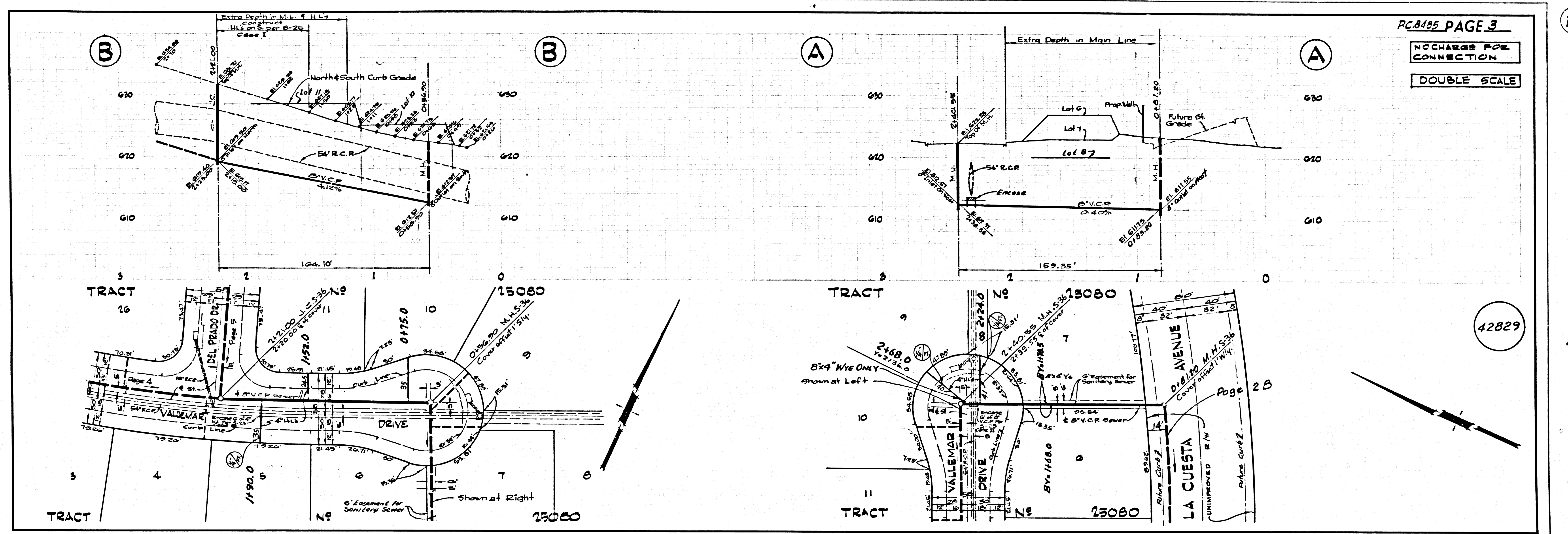
County Sanitation Districts shall be notified prior to the following so that required inspection can be made (Phone: 337-1025 x 608, 1414)
 Acceptance of the project.

No connections for the disposal of industrial wastes shall be made to sewers shown on these drawings without written permission from the Chief Engineer and General Manager of the County Sanitation Districts.

COUNTY OF LOS ANGELES, CALIFORNIA
 JOHN A. LAMBIE, COUNTY ENGINEER J. D. PARKHURST, CHIEF ENGINEER
 CO. SAN DIST. NO. 1
 APPROVED BY *R. F. Worling* APPROVED BY *J. D. Parkhurst*
 SAN. DIST. ENGINEER DISTRICT ENGINEER
 CHECKED BY *Thomas C. Howard*
 REG. CE NO. 12156
 27 JAN 71



P.C. 8485 PAGE 2
 NO CHARGE FOR CONNECTIONS
 DOUBLE SCALE
 42828



U.S.G.P. IN L.A. COUNTY SEWER DIST. NO. 2. S.E. CAL. BLUEPRINT CO.

PC 8485 PAGE 3

PC 8485 PAGE 4

