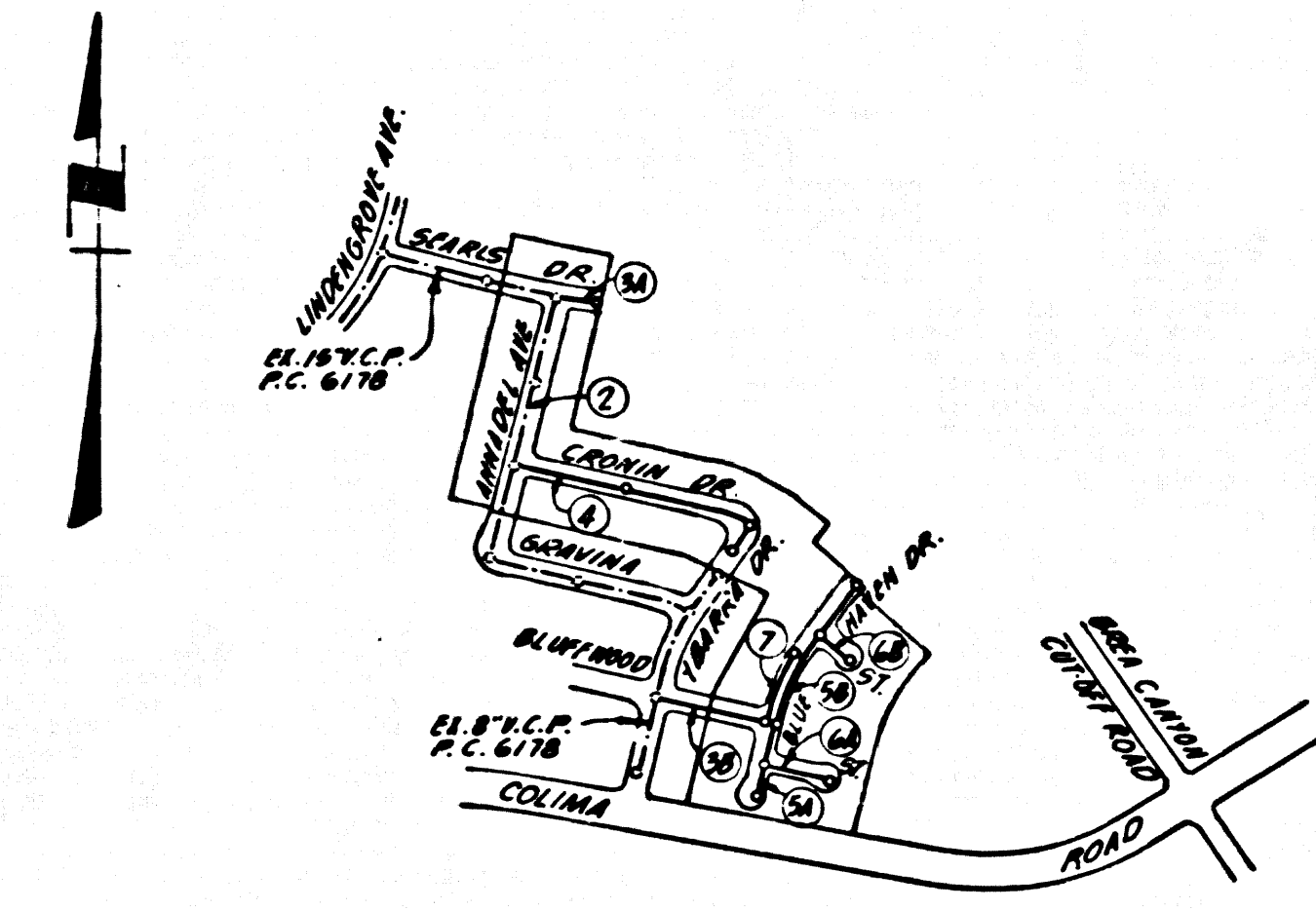


B.M. 80 3105 ELEV. 522.18
 R.O.M. 140 EAST CURB, 17' SOUTH OF
 B.C.R. AT INTERSECTION CORNER WITH AVE.
 AND YBARRA DR. 80 FT. NORTH AND 18 FT.
 EAST APPROX. & INTERSECTION
 OTHER B.C.M. QUAD. 19 85.



P.C. 8490
 INDEX MAP
 SCALE: 1" = 600'

No connections for the disposal of industrial wastes shall be made to sewers shown on these drawings without written permission from the Chief Engineer and General Manager of the County Sanitation Districts.

County Sanitation Districts shall be notified prior to the following so that required inspection can be made (Phone 337-1025 - 4444444)

Acceptance of the project.

LA PUENTE BLDG. DIST. NO. 2.0

- NOTES:
- HOUSE LATERALS TO BE CONSTRUCTED WITH INVERTS AT PROPERTY LINE 4 FEET BELOW CURB GRADE EXCEPT AS NOTED.
 - PROVIDE STAKES ON THE PROPERTY LINE OR PROPERTY LINES PRODUCED AT RIGHT ANGLES TO THE SEWER LINE AT THE CENTER LINE OF EACH MANHOLE.
 - NO REPRESENTATIVE OF THE COUNTY ENGINEER WILL SURVEY OR LAY OUT ANY PORTION OF THE WORK.
 - THE PRIVATE ENGINEER SHALL FURNISH THE CONTRACTOR WITH GRADE SHEETS AND STATIONING FOR ALL HOUSE LATERALS AND "T" OR "Y" BRANCHES AND SHALL PROVIDE STAKES FOR THEM AT THEIR PROPER LOCATIONS WITH STATIONING PLAINLY MARKED. ALL HOUSE LATERALS SHALL BE CONSTRUCTED IN A STRAIGHT ALIGNMENT AT RIGHT ANGLES FROM THE MAIN LINE SEWER EXCEPT AS SHOWN ON THE PLANS. HOUSE LATERALS FROM CHIMNEYS SHALL NOT HAVE AN ANGLE OF LESS THAN 45° WITH THE MAIN LINE SEWER. ANY COLLAGE IN ALIGNMENT SHALL BE REQUESTED IN WRITING BY THE PRIVATE ENGINEER.
 - THE PRIVATE ENGINEER SHALL FURNISH THE HOUSE LATERAL DEPTH AT THE PROPERTY LINE BELOW THE TOP OF CURB ELEVATION FOR EACH HOUSE LATERAL ON THE GRADE SHEET.
 - NO REVISIONS SHALL BE MADE IN THESE PLANS WITHOUT THE APPROVAL OF THE COUNTY ENGINEER.
 - THE CONTRACTOR SHALL NOTIFY THE CONSTRUCTION DIVISION BY TELEPHONE, MANHOLE 9-87, EXT. 8158, AT LEAST TWENTY-FOUR HOURS BEFORE STARTING ANY WORK UNDER THIS CONTRACT.
 - ALL STRUCTURES SHALL BE BUILT BRICK MANHOLES PER S-2 OR PRECAST CONCRETE MANHOLES PER S-20R S-4, EXCEPT AS NOTED.
 - "T" OR "Y" BRANCHES MAY BE USED FOR CONNECTIONS TO MAINLINE SEWERS EXCEPT AS NOTED.
 - MANHOLES FOR UNIMPROVED RIGHTS OF WAY TO BE 2 1/2 METERS ABOVE FINISHED GRADE.
 - USE EXTRA STRENGTH PIPE. ALL PIPE IS STANDARD DEPTH EXCEPT AS NOTED.
 - VITRIFIED CLAY PIPE JOINTS SHALL BE TYPE "T", "Y", OR "B" PER STANDARD SPECIFICATIONS SECTION 308-5.
 - IF A POWER POLE IS WITHIN THREE FEET OF THE SEWER, THE SEWER SHALL BE BACKLASS, PER S-23, TWO FEET ON EACH SIDE FROM THE POINT OF INTERFERENCE.
 - IF DURING THE COURSE OF CONSTRUCTION IT IS DETERMINED THAT THERE IS LESS THAN FOUR FEET OF COVER OVER THE TOP OF A MAIN LINE OR HOUSE LATERAL V.C.P. SEWER WHICH IS NOT INDICATED ON THE PLANS, THE PIPE SHALL BE BACKLASS PER S-23, UNLESS OTHERWISE APPROVED BY THE COUNTY ENGINEER.
 - RESURFACE ALL TRENCHES WITHIN PAVED AREAS TO MEET L.A. COUNTY ROAD DEPT. OR CALIFORNIA STATE HIGHWAY REQUIREMENTS IN ACCORDANCE WITH PERMITS.
 - SEWERS TO BE TESTED FOR LEAKAGE PER SECTION 304-3.2.7 OF THE STANDARD SPECIFICATIONS.
 - REFER TO SECTION 3-1.1.1 OF THE STANDARD SPECIFICATIONS REGARDING SAFETY CADDIS.
 - ALL JOINTS BETWEEN CLAY PIPE AND VITRIFIED CLAY PIPE SHALL BE MADE WITH A RUBBER SLAVEY JOINT, TYPE "C" OR "T", WITHIN BUILDING IF NECESSARY PER STANDARD SPECIFICATIONS, SECTION 308-5.

THE FOLLOWING LATEST REVISED STANDARD PLANS ON FILE IN THE OFFICE OF THE COUNTY ENGINEER SHALL APPLY IN THE CONSTRUCTION OF THIS PROJECT.

150' R.C.P.	S-2
MINIMUM MANHOLE	S-2
BRICK MANHOLE	S-2
NON-REINFORCED PRECAST CONCRETE MANHOLE	S-20R
REINFORCED PRECAST CONCRETE MANHOLE	S-20R
MANHOLE FRAME AND COVER	S-20R
STANDARD MANHOLE STEP	S-27
BEDDING FOR SEWER PIPE	S-21
CHANGING AND ENLARGING	S-21
PIPE ON THE SUPPORT	S-21
ALLOWABLE TRENCH WIDTHS	S-23

PROFILE, ALIGNMENT AND GRADE OF
 SANITARY SEWERS
 CONSTRUCTED IN

TRACT No. 25356

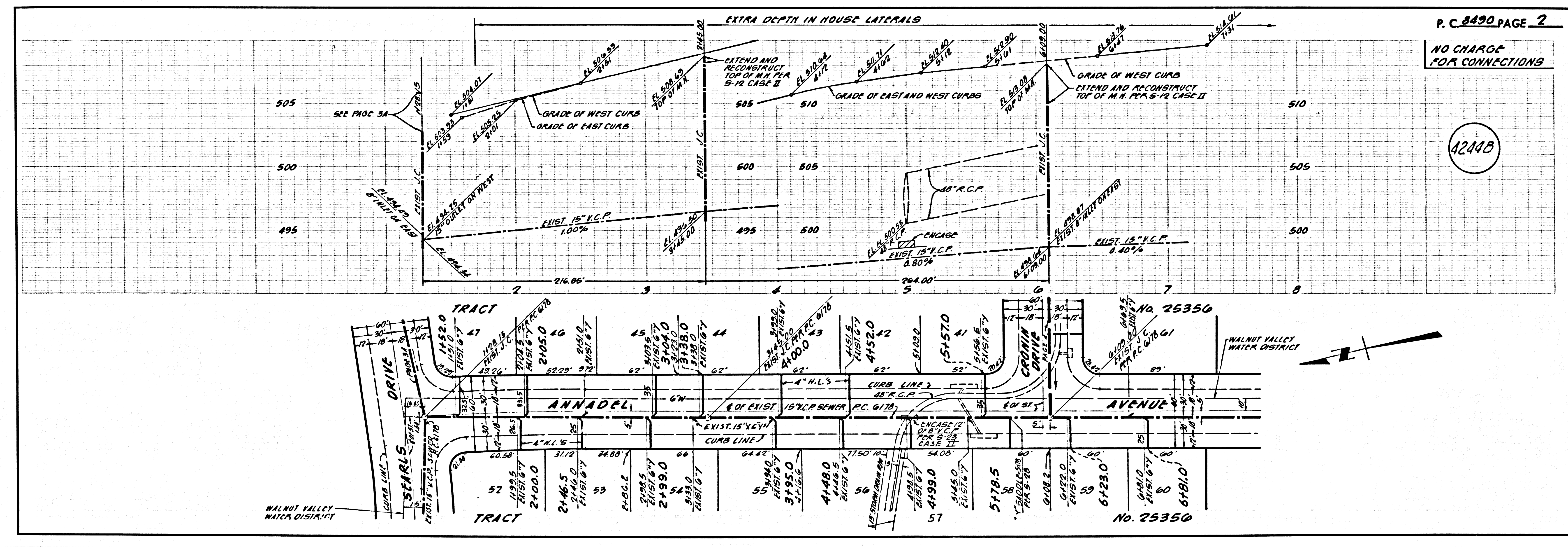
PRIVATE CONTRACT NO. 8490

W.S. 38-64
 4 SHEETS; 7 PAGES
 SCALE: VERT. 1" = 4' AUGUST, 1970
 HORIZ. 1" = 40'
 PREPARED IN THE OFFICES OF
 R.S. ANOVAN, CIVIL ENGINEER
 7366 BEVERLY BLVD., LOS ANGELES, CALIFORNIA
 BY: R. S. Anovan
 REG. E. E. NO. 3284

NOTES:
 GRADES TO WHICH THIS IMPROVEMENT IS TO BE CONSTRUCTED ARE SHOWN ON PLANS AND PROFILE. GRADE POINTS FOR TOP OF CURB, CENTER LINE OF STREETS, OR CENTER LINE OF ALLEYS ARE SHOWN BY CIRCLES ON PROFILES. AT ALL POINTS BETWEEN INDICATED POINTS THE GRADE SHALL BE ESTABLISHED SO AS TO CONFORM TO A STRAIGHT LINE DRAWN BETWEEN SAID INDICATED POINTS. ELEVATIONS ARE IN FEET ABOVE U.S.C. & G.S. MEAN LEVEL, DATUM OF 1929.
 WORK SHALL BE CONSTRUCTED ACCORDING TO THE STANDARD SPECIFICATIONS FOR PUBLIC WORKS CONSTRUCTION (S-20R/S-20R/S) AND COUNTY ENGINEER SPECIAL PROVISIONS FOR THE CONSTRUCTION OF SANITARY SEWERS DATED JANUARY 7, 1970, AND SHALL BE PROSECUTED BY THE PRIVATE ENGINEER.
 BEFORE WORK CAN BE STARTED, THE CONTRACTOR MUST OBTAIN A PERMIT TO EXCAVATE IN COUNTY STREETS FROM THE L. A. COUNTY ROAD DEPT., DISTRICT OFFICE NO. 1, AND PAY A FEE TO THE COUNTY ENGINEER, ROOM 18 BLDG. E. (ARTS/BALL, ANNEX, DOWNTOWN CALIF. HOUSE OR 701 S. BRUNNEN ST., DIST. OFFICE). REGIONAL OFFICE, SUFFICIENT TO COVER THE COST OF CONSTRUCTION INSPECTION AND RECORD PLANS.
 APPROVAL OF THIS PLAN BY THE COUNTY OF LOS ANGELES DOES NOT CONSTITUTE A REPRESENTATION AS TO THE ACCURACY OF THE LOCATION OF OR THE EXISTENCE OR NON-EXISTENCE OF ANY UNDERGROUND UTILITY PIPE, OR STRUCTURE WITHIN THE LIMITS OF THIS PROJECT. THIS NOTE APPLIES TO ALL PAGES.
 IF WORK IS TO BE DONE IN A STATE HIGHWAY, A PERMIT MUST BE OBTAINED FROM THE STATE OF CALIFORNIA, DIVISION OF HIGHWAYS, 120 SOUTH BRIDGE STREET, LOS ANGELES, CALIFORNIA.

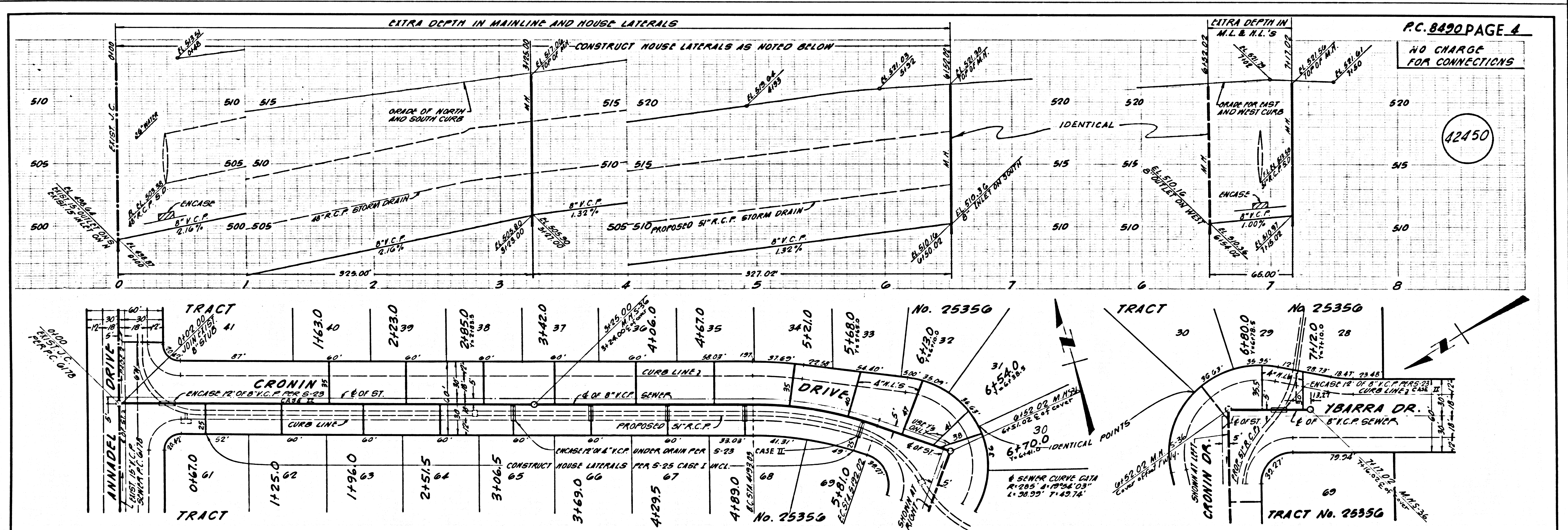
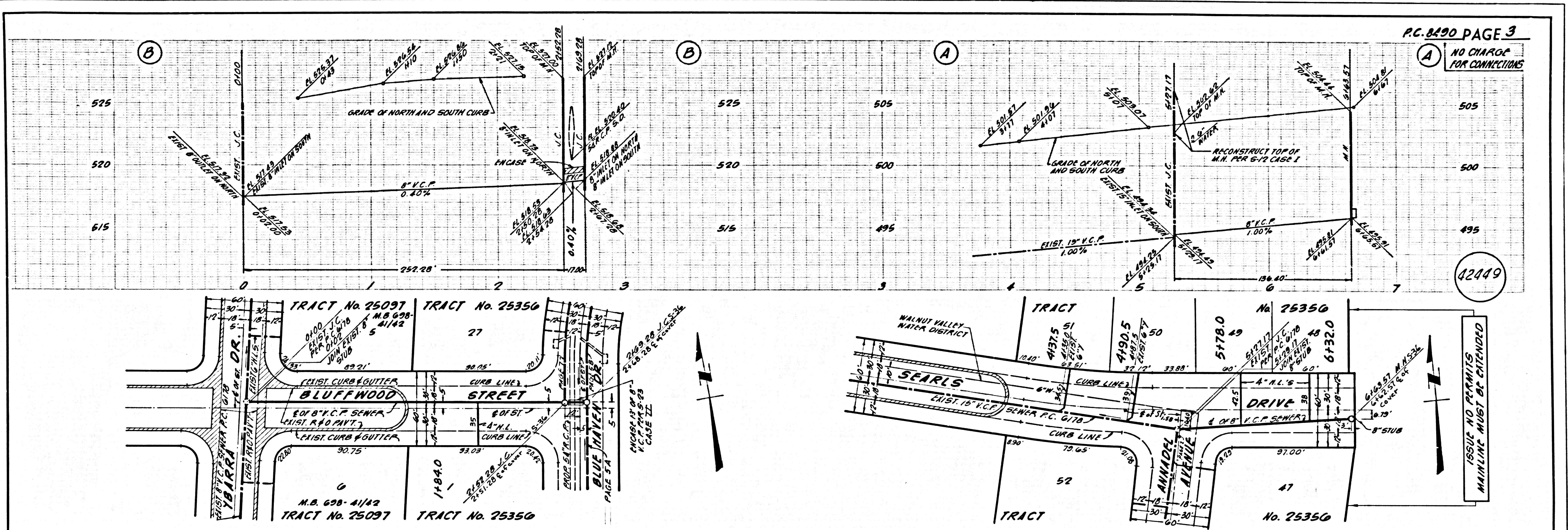
COUNTY OF LOS ANGELES, CALIFORNIA
 JOHN A. LAMBE, COUNTY ENGINEER J. D. PARKHURST, CHIEF ENGINEER
 APPROVED BY: B. F. Worthington APPROVED BY: J. D. Parkhurst
 SENIOR ENGINEER REGIONAL OFFICE OFFICE ENGINEER
 CHECKED BY: Thomas E. Howard
 DATE: 8/10/70
 REG. C.E. NO. 12156

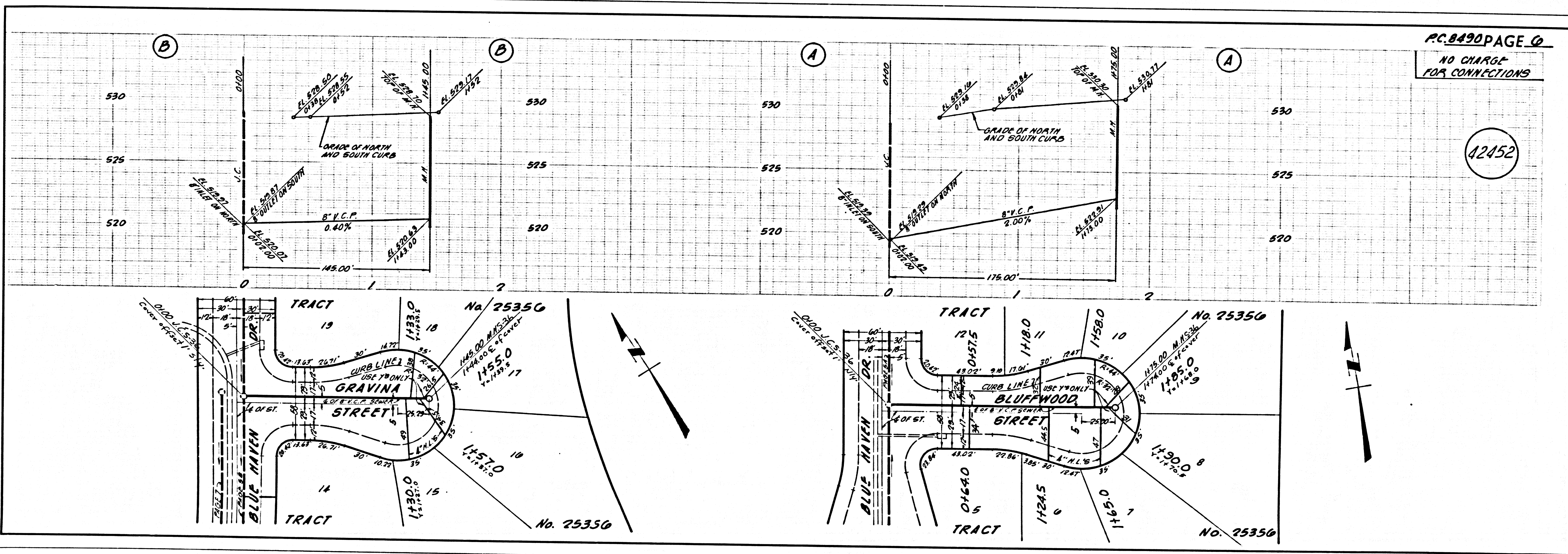
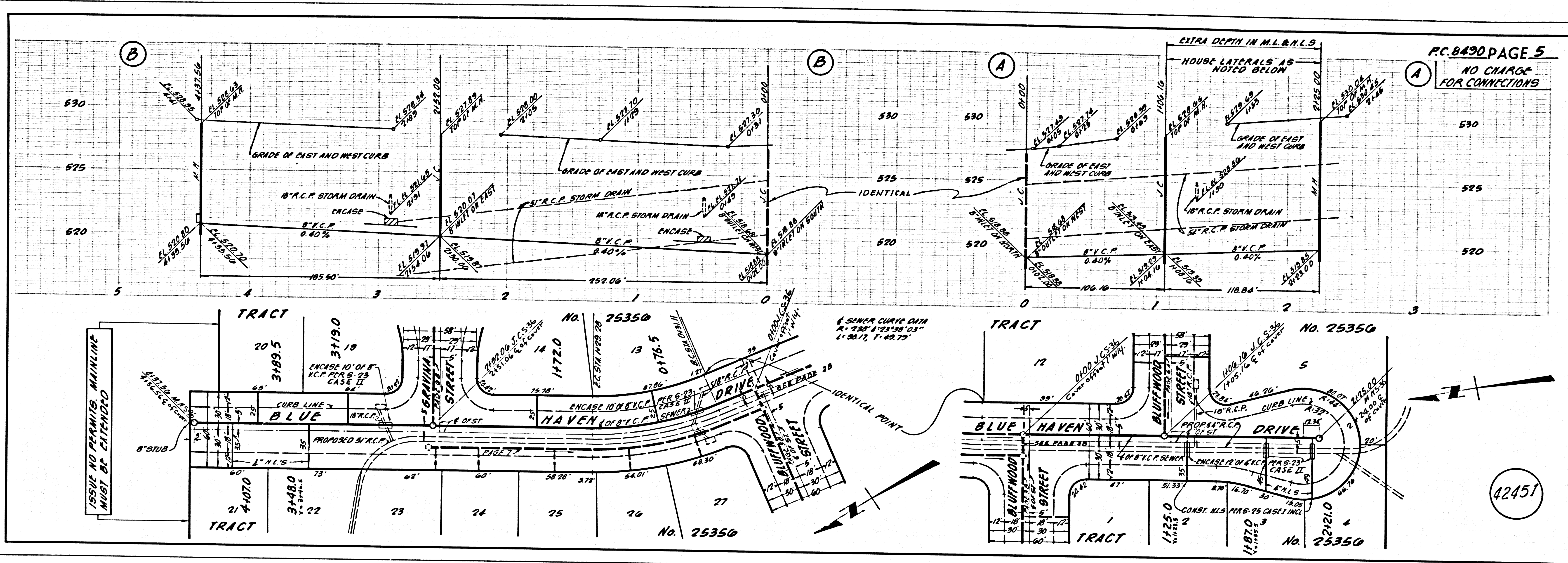
COLLECT CHARGES AS INDICATED



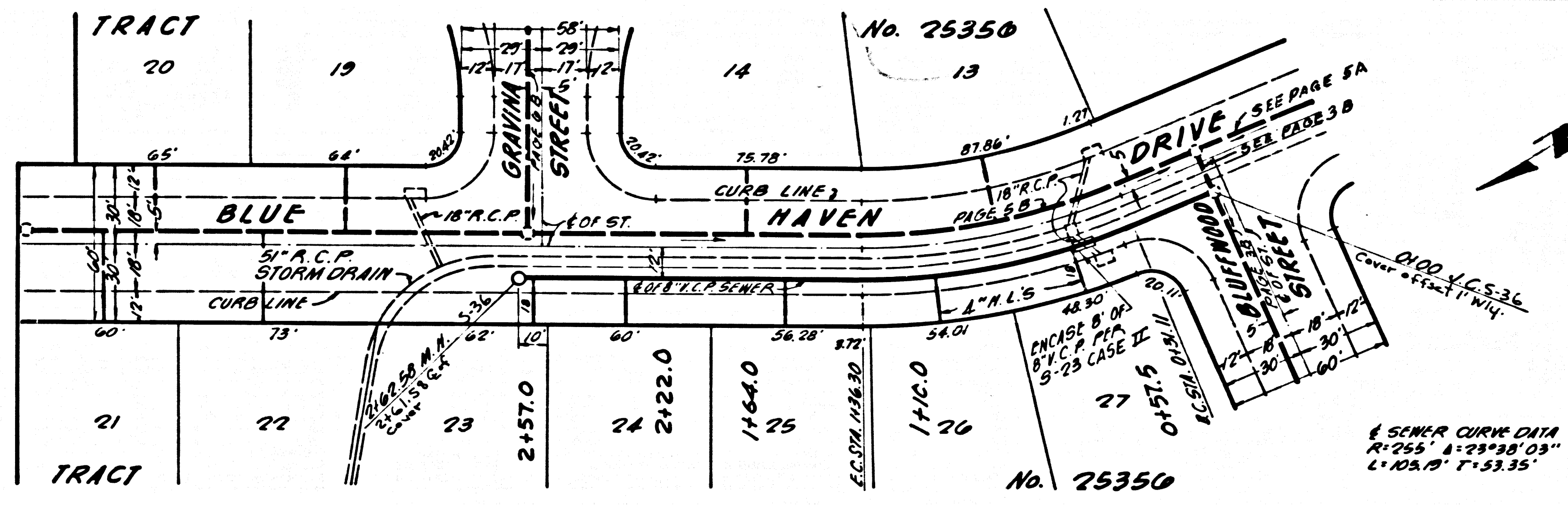
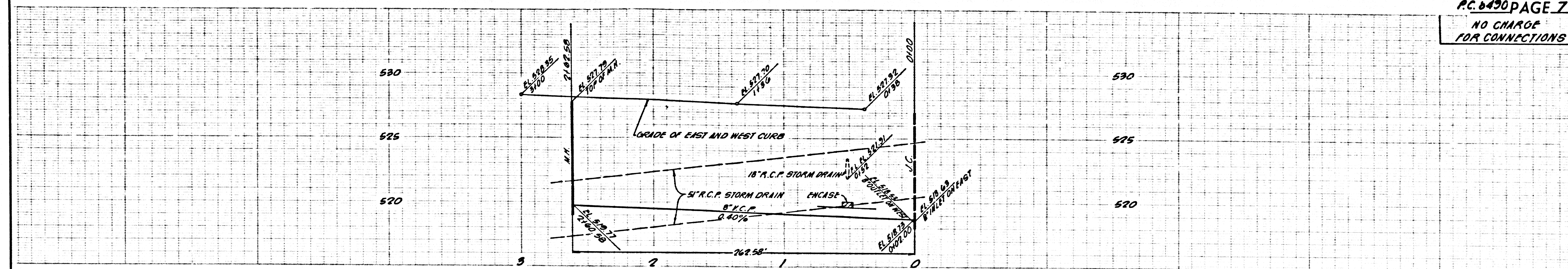
P.C. 8490 PAGE 2
 NO CHARGE FOR CONNECTIONS

42448





P.C. 6490 PAGE 7
NO CHANGE
FOR CONNECTIONS



PAGE