

B.M. BL 608 ELEV. 1216.346  
 U.S.C. and G.S. Mon. S. end bridge 53-14  
 Over Picoine Creek 3 N. of S. end  
 C.P. 18 1/2 E. of 52nd Fernando Rd. and 1.0 M.  
 N. of Newhall Sta. 1965 (232 1963)  
 NEWHALL QUAD. 1965

19. Special Backfill in Designated Areas:
- Backfill trench and replace other earth removed so as to achieve the natural or finished grades and slopes shown on the grading plan approved for this development by the Building and Safety Division.
  - All backfill and earth replaced shall be compacted to a minimum of 90% of maximum density per ASTM Standard Method of Test D 698-57T as modified acceptable certification of such compaction shall be submitted to the Construction Division.

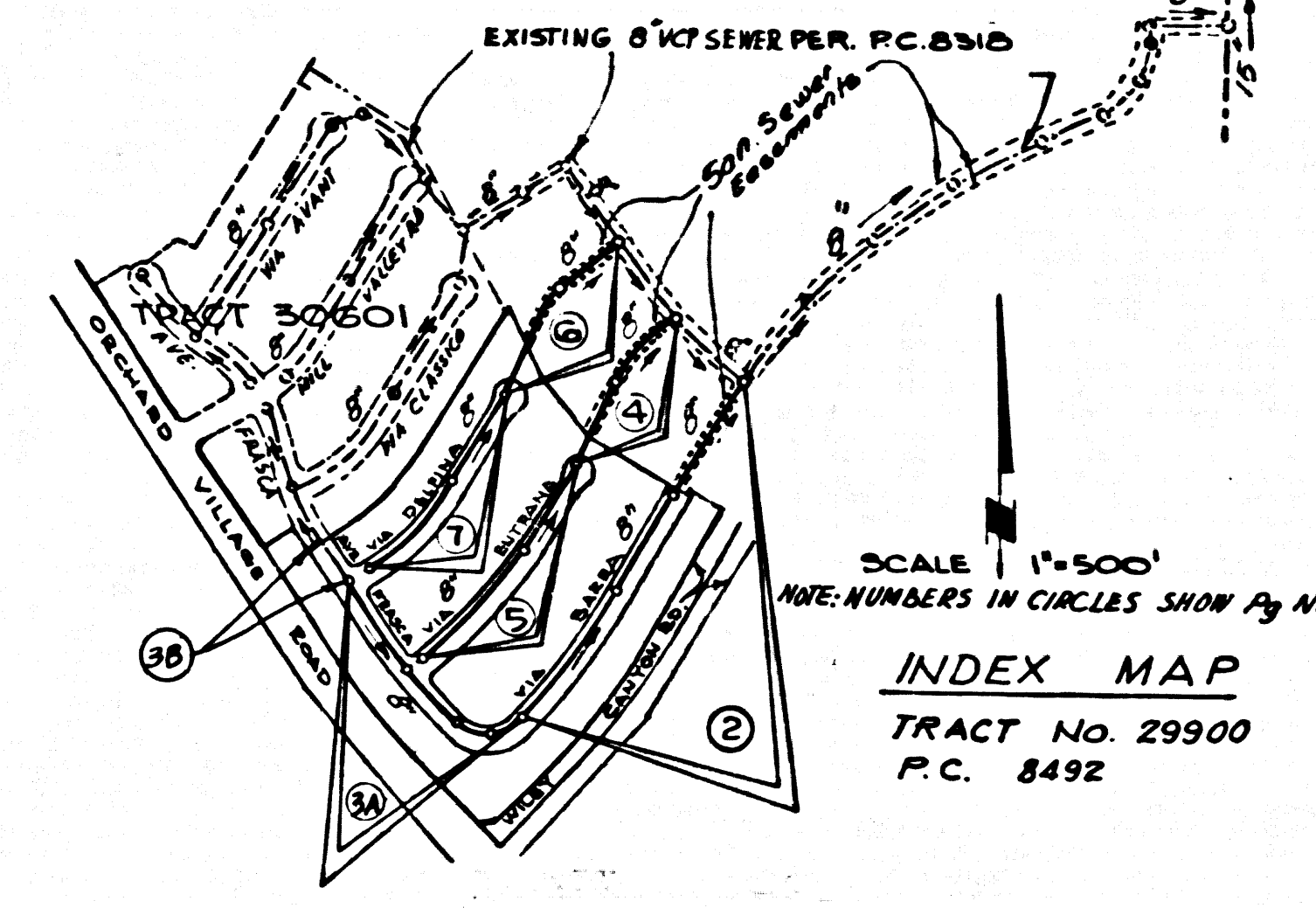
**NOTICE TO CONTRACTOR**  
 The existence and location of any underground pipes, or structures shown on these plans were obtained by a search of available records. To the best of our knowledge there are no existing utilities except as shown on these plans.  
 The Contractor is required to take precautionary measures to protect the existing utility lines and any lines not of record or not shown on these plans.

20. Lots 83, 84, 85, 86 are Recreation or Park Lots and are not served with house laterals.

No connections for the disposal of industrial wastes shall be made to sewer lines on these drawings without written permission from the Chief Engineer and General Manager of the County Sanitation Districts.

County Sanitation Districts shall be notified prior to the following so that required inspection can be made (Phone 327-1025 - (H2828))

Acceptance of the project.



**NEWHALL BLDG. DIST. NO. 82**

- NOTE:
- HOUSE LATERALS TO BE CONSTRUCTED WITH INVERTS AT PROPERTY LINE 4 FEET BELOW CURB GRADE, EXCEPT AS NOTED.
  - PROVIDE STAKES ON THE PROPERTY LINE OR PROPERTY LINES PRODUCED AT RIGHT ANGLES TO THE SEWER LINE AT THE CENTER LINE OF EACH MANHOLE.
  - NO REPRESENTATIVE OF THE COUNTY ENGINEER WILL SURVEY OR LAY OUT ANY PORTION OF THE WORK.
  - THE PRIVATE ENGINEER SHALL FURNISH THE COUNTY ENGINEER WITH GRADE SHEETS AND STATIONING FOR ALL HOUSE LATERALS AND "T" OR "T" BRANCHES AND SHALL PROVIDE STAKES FOR THEM AT THEIR PROPER LOCATIONS WITH STATIONING PLAINLY MARKED. ALL HOUSE LATERALS SHALL BE CONSTRUCTED BY A STRAIGHT ALIGNMENT AT RIGHT ANGLES FROM THE MAIN LINE SEWER EXCEPT AS SHOWN ON THE PLANS. HOUSE LATERALS FROM CHIMNEYS SHALL NOT HAVE AN ANGLE OF LESS THAN 45° WITH THE MAIN LINE SEWER. ANY CHANGE IN ALIGNMENT SHALL BE REQUESTED IN WRITING BY THE PRIVATE ENGINEER.
  - THE PRIVATE ENGINEER SHALL CONSIDER THE HOUSE LATERAL DEPTH AT THE PROPERTY LINE BELOW THE TOP OF CURB RELEVATION FOR EACH HOUSE LATERAL ON THE GRADE SHEET.
  - NO REVISIONS SHALL BE MADE IN THESE PLANS WITHOUT THE APPROVAL OF THE COUNTY ENGINEER.
  - THE CONTRACTOR SHALL NOTIFY THE CONSTRUCTION DIVISION BY TELEPHONE, MANHOLE 8-07, EXT. 8138, AT LEAST TWENTY-FOUR HOURS BEFORE STARTING ANY WORK UNDER THIS CONTRACT.
  - ALL STRUCTURES SHALL BE EITHER BRICK MANHOLES PER 5-3 OR PRECAST CONCRETE MANHOLES PER 5-5-6, EXCEPT AS NOTED.
  - "T" OR "T" BRANCHES MAY BE USED FOR CONNECTIONS TO MAINTAIN SEWER GRADE.
  - MANHOLE TOPS IN UNIMPROVED PORTS OF WAY TO BE 2 1/2 INCHES ABOVE FINISHED GRADE.
  - USE STEEL STRUCTURE PIPE, ALL PIPE IS STANDARD UNLESS NOTED OTHERWISE.
  - VERTICAL CLAY JOINTS SHALL BE TYPE "B", "C", OR "D" PER STANDARD SPECIFICATIONS SECTION 302.2.
  - IF A POWER POLE IS WITHIN THREE FEET OF THE SEWER, THE SEWER SHALL BE ENCASED, PER 6-8, TWO FEET ON EACH SIDE FROM THE POINT OF INTERFERENCE.
  - IF DURING THE COURSE OF CONSTRUCTION IT IS DETERMINED THAT THERE IS LESS THAN FOUR FEET OF COVER OVER THE TOP OF A MAIN LINE OR HOUSE LATERAL V.C.P. SEWER WHICH IS NOT INDICATED ON THE PLANS, THE PIPE SHALL BE ENCASED PER 6-8, FIFTH SUBSECTION IF NECESSARY PER STANDARD SPECIFICATIONS, SECTION 302.3.
  - INSURE ALL TRENCHES WITHIN FIVE FEET OF THE COUNTY ROAD BOUNDARY OR CALIFORNIA STATE HIGHWAY BOUNDARIES IN ACCORDANCE WITH PERMITS.
  - SEWERS TO BE TRENCH FOR LEAKAGE PER SECTION 302.3.7 OF THE STANDARD SPECIFICATIONS.
  - WORK TO SECTION 7-16.1 OF THE STANDARD SPECIFICATIONS, REGARDING SAFETY ORDERS.
  - ALL JOINTS BETWEEN CAST IRON PIPE AND VITRIFIED CLAY PIPE SHALL BE MADE WITH A RUBBER SLAVE JOINT, TYPE "C" OR "D", FIFTH SUBSECTION IF NECESSARY PER STANDARD SPECIFICATIONS, SECTION 302.3.
- THE FOLLOWING LATEST REVISED STANDARD PLANS ON FILE IN THE OFFICE OF THE COUNTY ENGINEER SHALL APPLY IN THE CONSTRUCTION OF THIS PROJECT.

BRICK	0.1
BRICK MANHOLE	0.2
NON-REINFORCED PRECAST CONCRETE MANHOLE	0.36
LOCATING MANHOLE FRAME AND COVER	0.30
STANDARD MANHOLE DEEP	0.12
REDDING FOR SEWER PIPE	0.07
CALLING AND ENCASING	0.30
PIPE ON THE SUPPORT	0.20
ALLOWABLE TRENCH WIDTH	0.20

**ISSUE NO PERMITS  
 UNTIL P.C. 8318 IS ACCEPTED**

**COLLECT CHARGES  
 AS INDICATED**

**REVISION**  
 Revised Curb and Sewer Grades  
 due to Revised Road Plans, on Pages 2, 3 & 5

APPROVED: *[Signature]* DATE 5-18-71  
 OFFICE OF THE COUNTY ENGINEER

**REVISION**  
 Revised Sewer alignment and grades  
 between Sta. 1125+00 to 1125+10

APPROVED: *[Signature]* DATE 9-9-71  
 OFFICE OF THE COUNTY ENGINEER

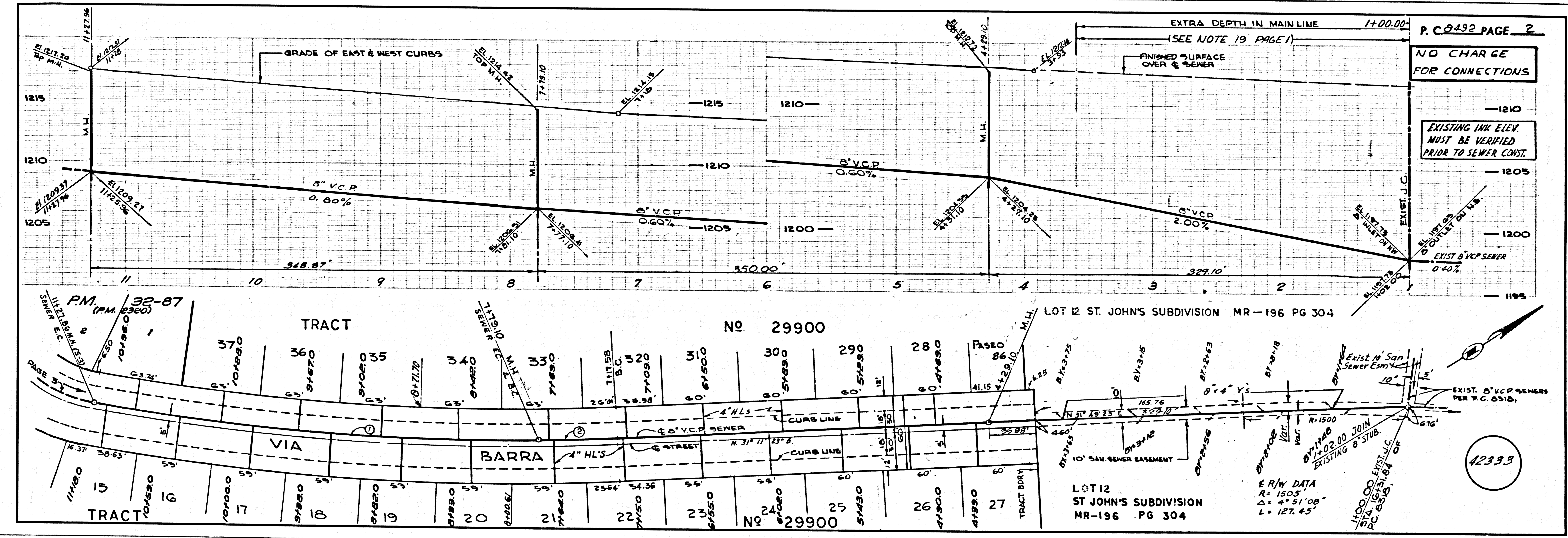
PROFILE, ALIGNMENT AND GRADE OF  
**SANITARY SEWERS P.C. 8492**  
 CONSTRUCTED IN PAGE 1

TRACT No 29900  
 PRIVATE CONTRACT NO. 8492  
 252-5-121  
 W.S. 62  
 4 SHEETS; 7 PAGES  
 SCALE: HORIZ. 1" = 40' VERT. 1" = 4'  
 OCTOBER, 1970  
 PREPARED IN THE OFFICES OF

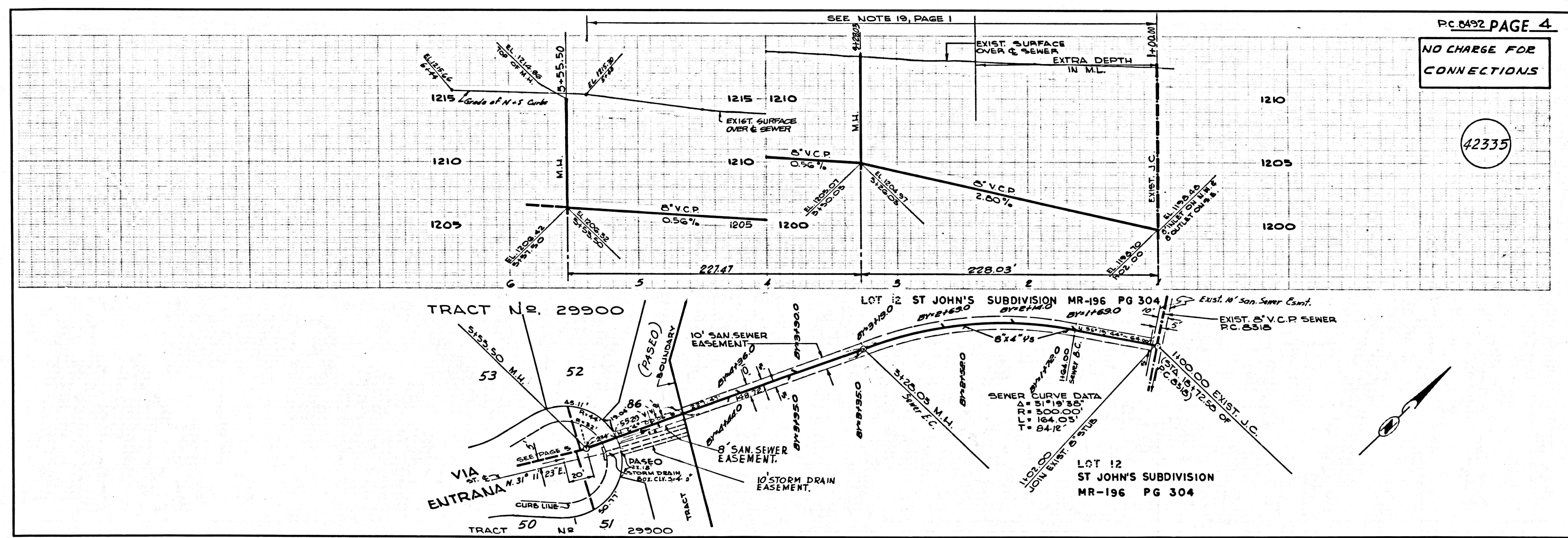
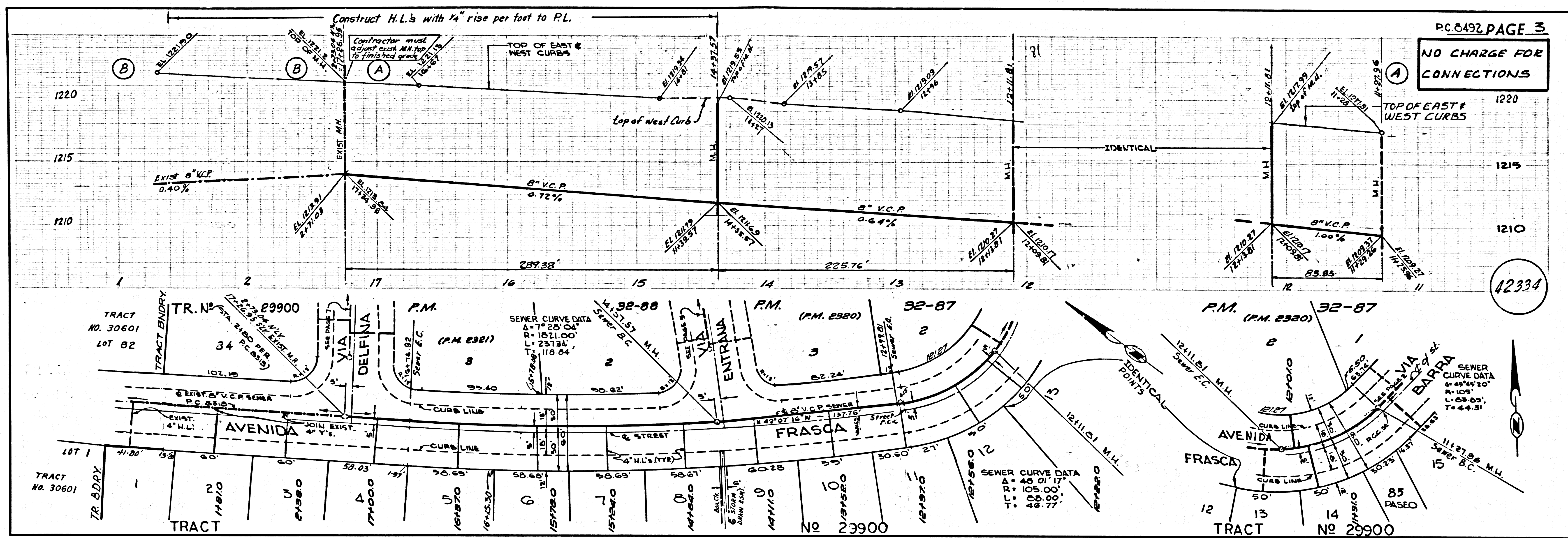
NOTE:  
 GRADES TO WHICH THIS IMPROVEMENT IS TO BE CONSTRUCTED ARE SHOWN ON PLANS AND PROFILE GRADE POINTS FOR TOP OF CURB, CENTER LINE OF STREETS, OR CENTER LINE OF ALLEYS ARE SHOWN BY CIRCLES ON PROFILE. AT ALL POINTS BETWEEN DESIGNATED POINTS THE GRADE SHALL BE ESTABLISHED SO AS TO CONFORM TO A STRAIGHT LINE DRAWN BETWEEN SAID DESIGNATED POINTS. ELEVATIONS ARE IN FEET ABOVE U.S.C. & G.S. SEA LEVEL DATUM OF 1929.  
 AND COUNTY ENGINEER'S SPECIAL ORDINANCES PER DATE APRIL 1, 1970 AND SHALL BE PROSECUTED ONLY IN THE PRESENCE OF THE COUNTY ENGINEER.  
 BEFORE WORK CAN BE STARTED, THE CONTRACTOR MUST OBTAIN A PERMIT TO EXCAVATE IN COUNTY STREETS FROM THE L. A. COUNTY ROAD DEPT., DISTRICT OFFICE NO. 11111 TO THE COUNTY ENGINEER, ROOM 328, COUNTY ENGINEERING DEPARTMENT, 126 SOUTH SPRING STREET, LOS ANGELES, CALIFORNIA. REGIONAL OFFICE, SUPPORTIVE TO COVER THE COST OF CONSTRUCTION INSPECTION AND RECORD PLANS.  
 APPROVAL OF THIS PLAN BY THE COUNTY OF LOS ANGELES DOES NOT CONSTITUTE A REPRESENTATION AS TO THE ACCURACY OF THE LOCATION OF OR THE EXISTENCE OR NON-EXISTENCE OF ANY UNDERGROUND UTILITY PIPE, OR STRUCTURE WITHIN THE LIMITS OF THE PROJECT. THE BURDEN IS UPON THE CONTRACTOR TO VERIFY THE LOCATION OF ALL UTILITIES.  
 IF WORK IS TO BE DONE IN A STATE HIGHWAY, A PERMIT MUST BE OBTAINED FROM THE STATE OF CALIFORNIA, DIVISION OF HIGHWAYS, 126 SOUTH SPRING STREET, LOS ANGELES, CALIFORNIA.

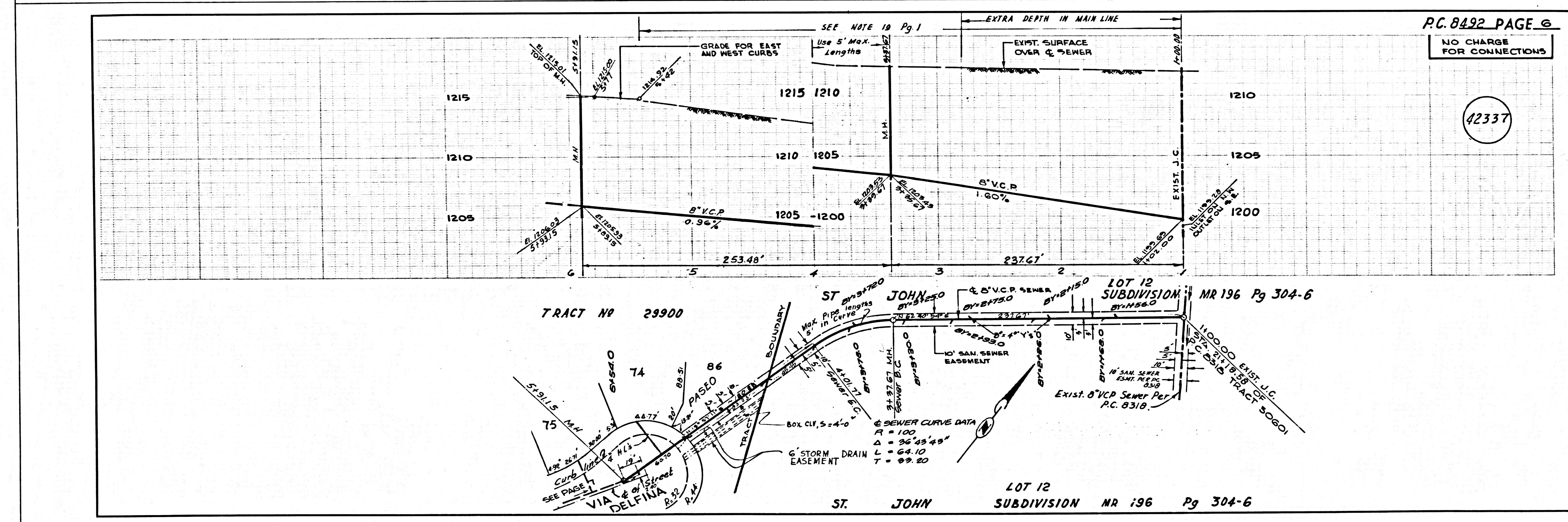
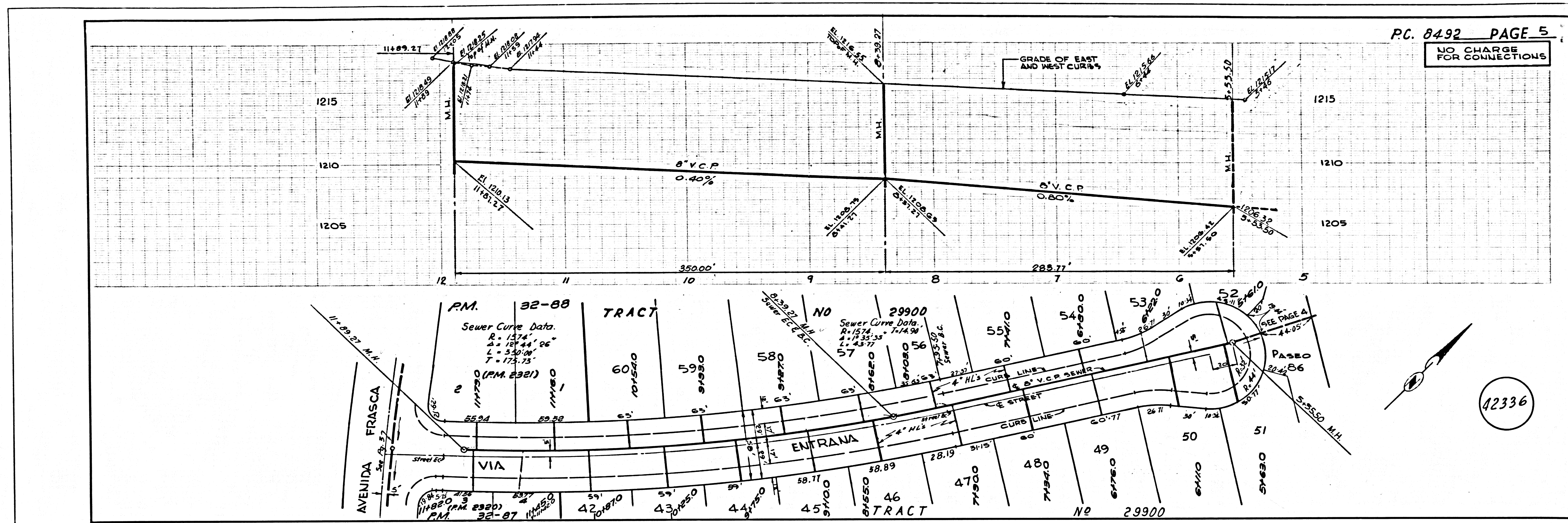
COUNTY OF LOS ANGELES, CALIFORNIA  
 JOHN A. LAMBE, COUNTY ENGINEER J. D. PARKHURST, CHIEF ENGINEER  
 CO. SANIT. NO. 32  
 APPROVED BY: *[Signature]* DATE 5-17-70 APPROVED BY: *[Signature]* DATE 5-17-70  
 REGIONAL ENGINEER REGIONAL OFFICE OFFICE ENGINEER

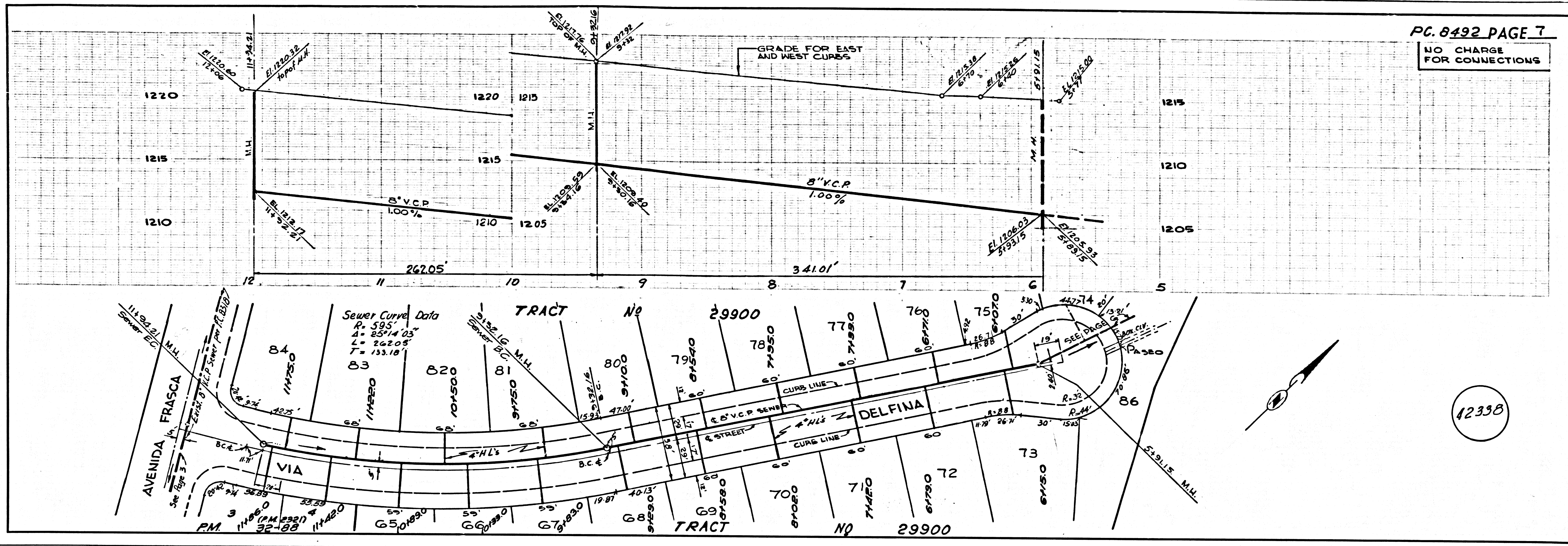
CHECKED BY: *[Signature]* DATE 11-5-70  
 REG. CE. NO. 14330  
 42332  
 J.N. 0250.02



1. A COUNTY SEWER SHEET NO. 1 SOUTHERN CALIFORNIA BLUEPRINT CO. 308 1109







PC. 8492 PAGE 7  
 NO CHARGE  
 FOR CONNECTIONS

PAGE