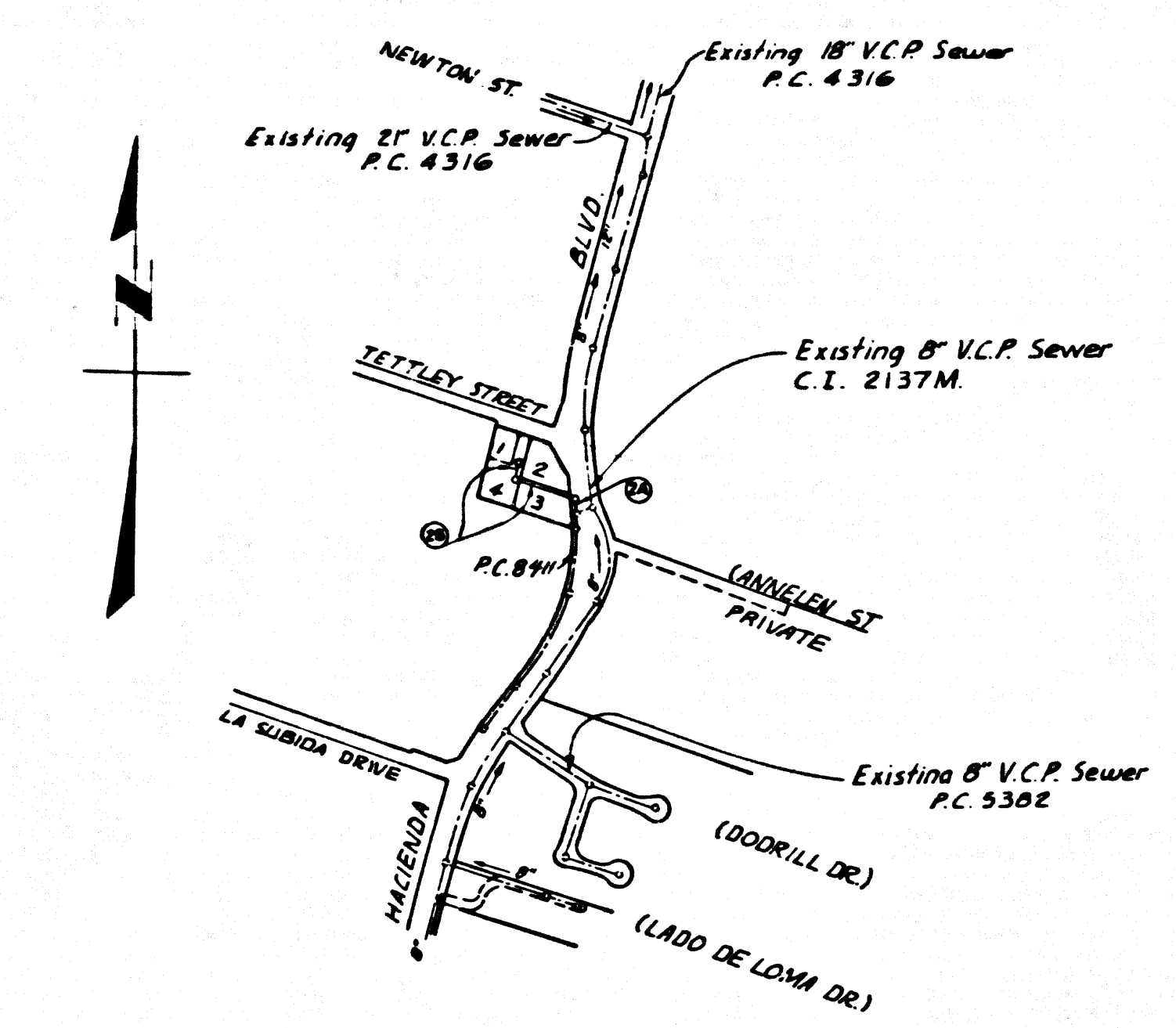


B.M. B.G. 2579 ELEV. 438.733  
 R.D. MON. IN WELL 8" DOWN @ 4 INT  
 HACIENDA BLVD & TETLEY ST. MARKED  
 (R.D. DEPT. 1962)  
 OTTERBEIN QUAD. 1965



INDEX MAP  
 P.C. N° 8493  
 SCALE: 1" = 600'

No connections for the disposal of industrial wastes shall be made to sewers shown on these drawings without written permission from the Chief Engineer and General Manager of the County Sanitation District.

LA PUENTE BLDG. DIST. NO. 2

- NOTES:
- PROVIDE STAKES ON THE PROPERTY LINE OR PROPERTY LINES PRODUCED AT RIGHT ANGLES TO THE SEWER LINE AT THE CENTER LINE OF EACH MANHOLE.
  - NO REPRESENTATIVE OF THE COUNTY ENGINEER WILL SURVEY OR LAY OUT ANY PORTION OF THE WORK.
  - THE PRIVATE ENGINEER SHALL FURNISH THE COUNTY ENGINEER WITH GRADE SHEETS AND STATIONING FOR ALL HOUSE LATERALS AND "T" OR "Y" BRANCHES AND SHALL PROVIDE STAKES FOR THEM AT THEIR PROPER LOCATIONS WITH STATIONING PLAINLY MARKED. ALL HOUSE LATERALS SHALL BE CONSTRUCTED IN A STRAIGHT ALIGNMENT AT RIGHT ANGLES FROM THE MAIN LINE SEWER EXCEPT AS SHOWN ON THE PLANS. HOUSE LATERALS FROM CHIMNEYS SHALL NOT HAVE AN ANGLE OF LESS THAN 45° WITH THE MAIN LINE SEWER. ANY CHANGE IN ALIGNMENT SHALL BE REQUESTED IN WRITING BY THE PRIVATE ENGINEER.
  - THE PRIVATE ENGINEER SHALL FURNISH THE HOUSE LATERAL DEPTH AT THE PROPERTY LINE BELOW THE TOP OF CURB ELEVATION FOR EACH HOUSE LATERAL ON THE GRADE SHEET.
  - NO REVISIONS SHALL BE MADE IN THESE PLANS WITHOUT THE APPROVAL OF THE COUNTY ENGINEER.
  - THE CONTRACTOR SHALL NOTIFY THE CONSTRUCTION DIVISION BY TELEPHONE, MADISON 9-4707, EXT. 81551, AT LEAST TWENTY-FOUR HOURS BEFORE STARTING ANY WORK UNDER THIS CONTRACT.
  - ALL STRUCTURES SHALL BE EITHER BRICK MANHOLES PER S-26 OR PRECAST CONCRETE MANHOLES PER S-26, EXCEPT AS NOTED.
  - "T" OR "Y" BRANCHES MUST BE LINED FOR CONNECTIONS TO MAIN LINE SEWER EXCEPT AS NOTED.
  - MANHOLE TOPS IN UNIMPROVED PORTS OF WAY TO BE SIX INCHES ABOVE FINISHED GRADE.
  - USE EXTRA STRENGTH PIPE. ALL PIPE IS STANDARD DEPTH EXCEPT AS NOTED.
  - WYTHROPED CLAY PIPE JOINTS SHALL BE TYPE "D", 1" DEPTH OF JOINT PER STD. SPEC. SEC. 200-2.
  - IF A POWER POLE IS WITHIN THREE FEET OF THE SEWER, THE SEWER SHALL BE ENCASED, PER S-25, TWO FEET ON EACH SIDE FROM THE POINT OF INTERFERENCE.
  - IF DURING THE COURSE OF CONSTRUCTION IT IS DETERMINED THAT THERE IS LESS THAN FOUR FEET OF COVER OVER THE TOP OF A MAIN LINE OR HOUSE LATERAL V.C.P. SEWER WHICH IS NOT INDICATED ON THE PLANS, THE PIPE SHALL BE ENCASED PER S-25, UNLESS OTHERWISE APPROVED BY THE COUNTY ENGINEER.
  - HOUSE LATERALS TO BE CONSTRUCTED WITH INVERTS AT PROPERTY LINE & FIT SHOW CURB GRADE EXCEPT AS NOTED.
  - RESURFACE ALL TRENCHES WITHIN PAVED AREAS TO MEET L.A. COUNTY ROAD DEPT. OR CALIFORNIA STATE HIGHWAY REQUIREMENTS IN ACCORDANCE WITH PERMITS.
  - SEWERS TO BE TESTED FOR LEAKAGE PER SECTION 206-2.17 UNIFORM STANDARD SPECIFICATIONS.
  - REFER TO SECTION 7-10-4.1 OF THE STANDARD SPECIFICATIONS, REGARDING SAFETY CLOTHES.
  - SPECIAL SAFETY IN DESIGNATED AREAS.
  - BACKFILL TRENCH AND SERVICE OTHER MATERIALS REMOVED SO AS TO ACHIEVE THE NATURAL OR PREPARED GRADES AND SLOPES SHOWN ON THE GRADING PLAN APPROVED FOR THIS TRACT BY THE BUILDING AND SAFETY DIVISION.
  - ALL BACKFILL AND SLOPE SURFACES SHALL BE COMPACTED TO A MINIMUM OF 90% OF MAXIMUM DENSITY PER A.S.T.M. STANDARDS AND METHODS OF TEST SHOWN BY AS NOTED. ACCEPTABLE CLASSIFICATION OF SUCH COMPACTION SHALL BE SUBMITTED TO THE CONSTRUCTION DIVISION.
  - ALL JOINTS BETWEEN CAST IRON PIPE AND WYTHROPED CLAY PIPE SHALL BE MADE WITH A RUBBER-SLEEVE JOINT TYPE "C" OF COVER BULKHEAD IF NECESSARY PER STANDARD SPECIFICATIONS, SECTION 206-2.

PROFILE ALIGNMENT AND GRADE OF  
 SANITARY SEWERS P.C. 8493  
 CONSTRUCTED TO SERVE PAGE 1

P. M. NO. 1706  
 PRIVATE CONTRACT NO. 8493

W.S. 38 A 3  
 SHEETS: 2 PAGES  
 SCALE: VERT. 1" = 4' APRIL, 1970  
 HORIZ. 1" = 40'  
 PREPARED IN THE OFFICES OF  
 KEMMERER ENGR. CO. INC.  
 6705 S. PAINTER AVE., WHITTIER, CALIF.  
 BY: Robert R. J. Leary  
 REG. C. E. NO. 11349

FOR LEGEND SEE PLAN NO. S-1

NOTE:  
 GRADES TO WHICH THIS IMPROVEMENT IS TO BE CONSTRUCTED ARE SHOWN ON PLANS AND PROFILES. GRADE POINTS FOR TOP OF CURB, CENTER LINE OF STREETS, OR CENTER LINE OF ALLEYS ARE SHOWN BY CIRCLES ON PROFILES. AT ALL POINTS BETWEEN DESIGNATED POINTS THE GRADE SHALL BE ESTABLISHED SO AS TO CONFORM TO A STRAIGHT LINE DRAWN BETWEEN SAID DESIGNATED POINTS. ELEVATIONS ARE IN FEET ABOVE U.S.C. & G.S. MEAN SEA LEVEL OF 1929.  
 THE SEWERING AND DATA HEREON ARE HEREBY MADE A PART OF THE SPECIFICATIONS FOR PUBLIC WORKS CONSTRUCTION 1970 EDITION AND COUNTY SUPERVISOR SPECIAL ORDINANCE NO. 100000 OF SAN SEBASTIAN COUNTY, CALIF. DATED APRIL 7, 1970 AND SHALL BE PROSECUTED ONLY IN PRESENCE OF THE COUNTY ENGINEER.  
 BEFORE WORK CAN BE STARTED, THE CONTRACTOR MUST OBTAIN A PERMIT TO EXCAVATE IN COUNTY STREETS FROM THE L.A. COUNTY ROAD DEPT., DISTRICT OFFICE NO. 221, E. BROADWAY, LOS ANGELES, CALIF. AND PAY A FEE TO THE COUNTY ENGINEER, ROOM P-9, REG. & PERMIT DIVISION, DISTRICT OFFICE NO. 221, E. BROADWAY, LOS ANGELES, CALIF. A PERMIT TO EXCAVATE IN COUNTY STREETS TO COVER THE COST OF CONSTRUCTION INSPECTION AND RECORD PLANS.  
 THE LOCATION OF THIS PLAN BY THE COUNTY OF LOS ANGELES DOES NOT CONSTITUTE A REPRESENTATION AS TO THE ACCURACY OF THE LOCATION OF OR THE EXISTENCE OR NON-EXISTENCE OF ANY UNDERGROUND UTILITY PIPE, OR STRUCTURE WITHIN THE LIMITS OF THIS PROJECT. THIS WORK IS TO BE DONE IN A STATE HIGHWAY. A PERMIT MUST BE OBTAINED FROM THE STATE OF CALIFORNIA, DIVISION OF HIGHWAYS, 120 SOUTH BRIDGE STREET, LOS ANGELES, CALIFORNIA.

COUNTY OF LOS ANGELES, CALIFORNIA  
 JOHN A. LAMBIE, COUNTY ENGINEER J. D. PARKHURST, CHIEF ENGINEER  
 CO. SAN DIST. 2

THE FOLLOWING COUNTY ENGINEER STANDARD PLANS APPLY TO THIS PROJECT

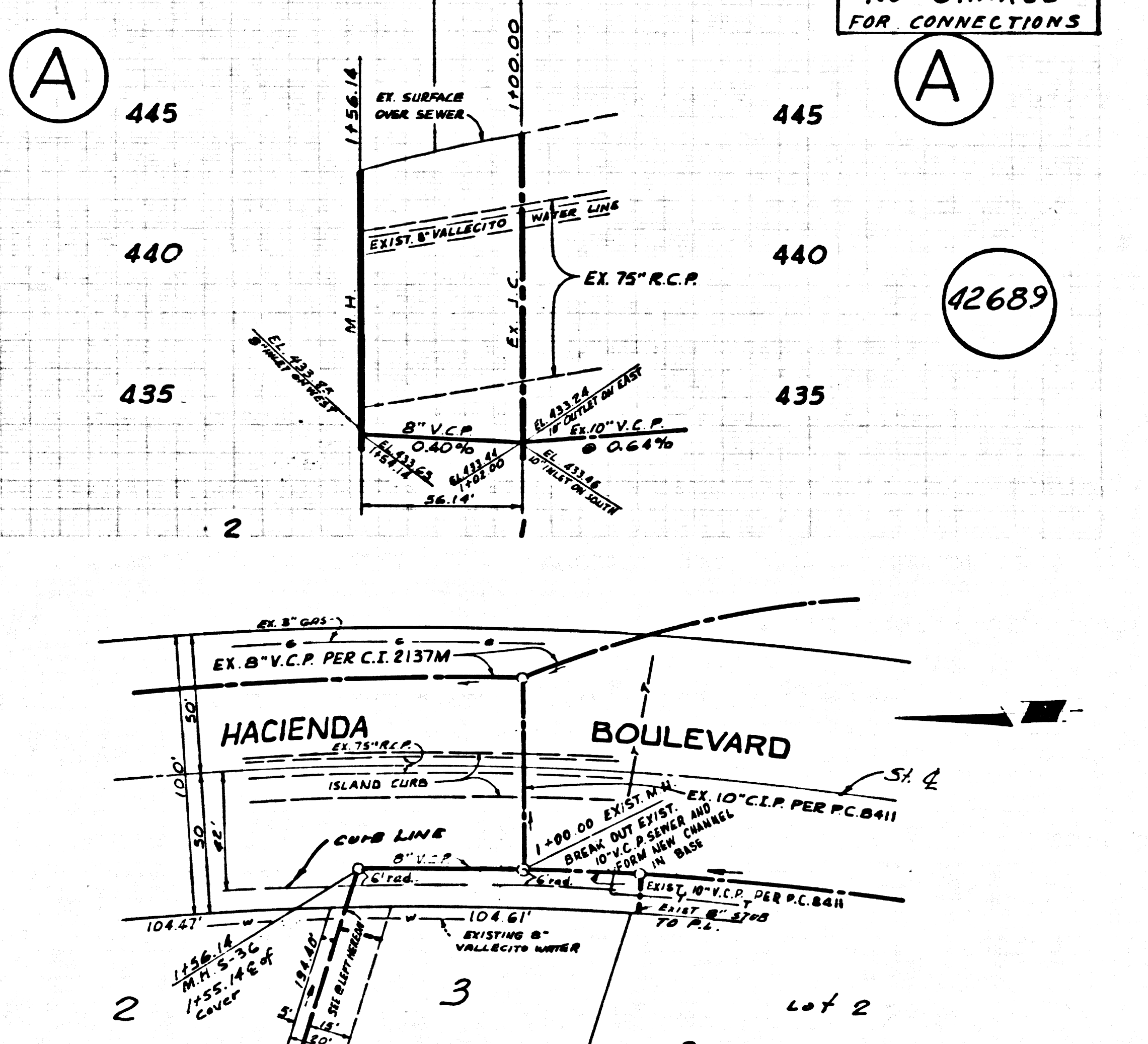
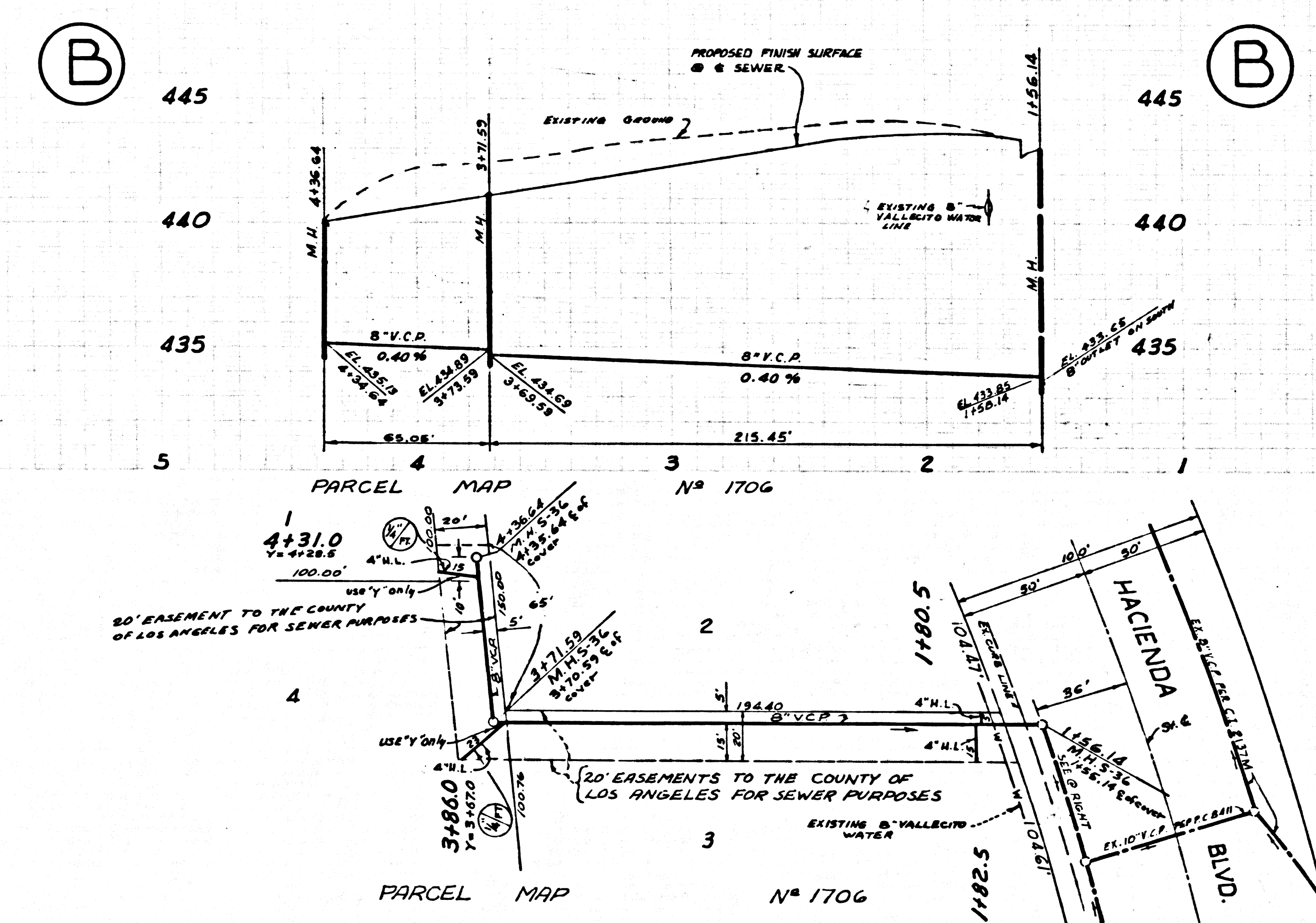
LEGEND	S-1
MINIMUM PUBLIC SAFETY REQUIREMENTS	S-2
BENCHMANHOLE	S-3
NON-REINFORCED PRECAST CONCRETE MANHOLE	S-3B
LICENSE MANHOLE FRAME COVER	S-3B
MANHOLE STEP	S-17
BEDDING FOR SEWER PIPE	S-21
GRADING AND ENCASUREMENT	S-23
WYE OR TEE SUPPORT	S-26
ALLOWABLE TRENCH WIDTHS	S-28

Acceptance of the project.

**COLLECT CHARGES AS INDICATED**

APPROVED BY: *Robert R. J. Leary* (SAN DIST. 2 REGIONAL ENGINEER)  
 APPROVED BY: *J. D. Parkhurst* (OFFICE ENGINEER)  
 CHECKED BY: *Thomas J. Schindler*  
 REG. C. E. NO. 12126  
 OF 1968 71

42688



P. C. 8493 PAGE 2  
 NO CHARGE FOR CONNECTIONS

42689