

NEWHALL BLDG. DIST. NO. 8.2

NOTES:

- HOUSE LATERALS TO BE CONSTRUCTED WITH INVERTS AT PROPERTY LINE 4 FEET BELOW CURB GRADE EXCEPT AS NOTED.
- PROVIDE STAKES ON THE PROPERTY LINE OR PROPERTY LINES PRODUCED AT RIGHT ANGLES TO THE SEWER LINE AT THE CENTER LINE OF EACH MANHOLE.
- NO REPRESENTATIVE OF THE COUNTY ENGINEER WILL SURVEY OR LAY OUT ANY PORTION OF THE WORK.
- THE PRIVATE ENGINEER SHALL SUBMIT THE COUNTY ENGINEER WITH GRADE SHEETS AND STATIONING FOR ALL HOUSE LATERALS AND "T" OR "T" BRANCHES AND SHALL PROVIDE STAKES FOR THEM AT THEIR PROPER LOCATIONS. WITH STATIONING PLAINLY MARKED. ALL HOUSE LATERALS SHALL BE CONSTRUCTED IN A STRAIGHT ALIGNMENT AT RIGHT ANGLES FROM THE MAIN LINE SEWER EXCEPT AS SHOWN ON THE PLANS. HOUSE LATERALS FROM CHIMNEYS SHALL NOT HAVE AN ANGLE OF LESS THAN 45° WITH THE MAIN LINE SEWER. ANY CHANGE IN ALIGNMENT SHALL BE REQUESTED IN WRITING BY THE PRIVATE ENGINEER.
- THE PRIVATE ENGINEER SHALL FURNISH THE HOUSE LATERAL DEPTH AT THE PROPERTY LINE BELOW THE TOP OF THE ELEVATION FOR EACH HOUSE LATERAL ON THE GRADE SHEET.
- NO REVISIONS SHALL BE MADE IN THESE PLANS WITHOUT THE APPROVAL OF THE COUNTY ENGINEER.
- THE CONTRACTOR SHALL NOTIFY THE COUNTY ENGINEER BY TELEPHONE, MADISON 9-2747, EXT. 87158, AT LEAST TWENTY-FOUR HOURS BEFORE STARTING ANY WORK UNDER THIS CONTRACT.
- ALL STRUCTURES SHALL BE EITHER BRICK MANHOLES PER S-2 OR PRECAST CONCRETE MANHOLES PER S-3C, EXCEPT AS NOTED.
- "T" OR "T" BRANCHES MAY BE USED FOR CONNECTIONS TO MAINLINE SEWERS EXCEPT AS NOTED.
- MANHOLE TOPS IN UNIMPROVED RIGHTS OF WAY TO BE SIX INCHES ABOVE FINISHED GRADE.
- USE EXTRA STRENGTH PIPE. ALL PIPE IS STANDARD DEPTH EXCEPT AS NOTED.
- VITRIFIED CLAY PIPE JOINTS SHALL BE TYPE "T", "T", OR "T" PER STANDARD SPECIFICATIONS SECTION 396.5.
- IF A POWER POLE IS WITHIN THREE FEET OF THE SEWER, THE SEWER SHALL BE ENCASED, PER S-2B, TWO FEET ON EACH SIDE FROM THE POINT OF INTERFERENCE.
- IF DURING THE COURSE OF CONSTRUCTION IT IS DETERMINED THAT THERE IS LESS THAN FOUR FEET OF COVER OVER THE TOP OF A MAIN LINE OR HOUSE LATERAL V.C.P. SEWER WHICH IS NOT INDICATED ON THE PLANS, THE PIPE SHALL BE ENCASED PER S-2B, UNLESS OTHERWISE APPROVED BY THE COUNTY ENGINEER.
- REINFORCE ALL TRENCHES WITHIN PAVED AREAS TO MEET L.A. COUNTY ROAD DEPT. OR CALIFORNIA STATE HIGHWAY REQUIREMENTS AS ACCORDANCE WITH PERMITS.
- SEWERS TO BE TESTED FOR LEAKAGE PER SECTION 396.2.2.7 OF THE STANDARD SPECIFICATIONS.
- REFER TO SECTION 7.18.1 OF THE STANDARD SPECIFICATIONS, REGARDING SAFETY CANNERS.
- ALL JOINTS BETWEEN CAST IRON PIPE AND VITRIFIED CLAY PIPE SHALL BE MADE WITH A RUBBER SLAVE JOINT, TYPE "C" OR "D", WITH GASKETING IF NECESSARY PER STANDARD SPECIFICATIONS, SECTION 396.2.

THE FOLLOWING LATEST REVISED STANDARD PLANS ON FILE IN THE OFFICE OF THE COUNTY ENGINEER SHALL APPLY IN THE CONSTRUCTION OF THIS PROJECT.

SEWERS	S-1
BRICK MANHOLES	S-2
NON-REINFORCED PRECAST CONCRETE MANHOLES	S-3
LOCKING MANHOLE FRAME AND COVER	S-3C
STANDARD MANHOLE STEP	S-4
SEWERS FOR SEWER PIPE	S-5
CHARGING AND ENCLOSURE	S-6
WYS OF THE SUPPORT	S-7
ALLOWABLE TRENCH WIDTHS	S-8

County Sanitation Districts shall be notified prior to the following so that required inspection can be made (Division 507.102.8.1 & 10.2.2.3)

No construction for the disposal of industrial wastes shall be made in areas shown on these drawings without written permission from the Chief Engineer and General Manager of the County Sanitation Districts.

COLLECT CHARGES AS INDICATED

PROFILE, ALIGNMENT AND GRADE OF
SANITARY SEWERS P.C. 8494
 CONSTRUCTED IN PAGE 1

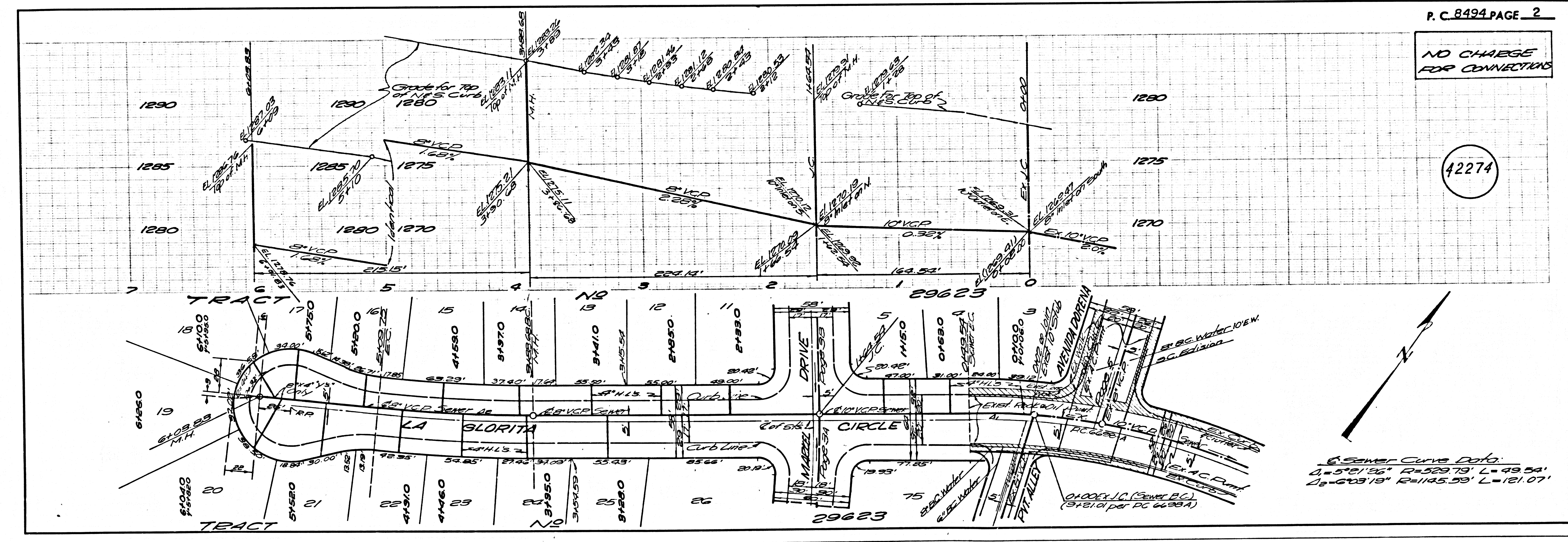
TRACT NO. 29623
PRIVATE CONTRACT NO. 8494
 INDEX 294-117
 W.S. 63-E-4
 3 SHEETS; 5 PAGES
 SCALE: VERT. 1"=4' OCT. 1970
 HORIZ. 1"=40'

PREPARED IN THE OFFICES OF
CROWN ENGINEERING & SURVEYING CORP.
 18455 BURBANK BLVD., TARZANA, CALIF.
 BY: [Signature] REG. C. E. NO. 2758
 MORTON D. SCHWARTZ

NOTE:
 GRADES TO WHICH THIS IMPROVEMENT IS TO BE CONSTRUCTED ARE SHOWN ON PLANS AND PROFILE. GRADE POINTS FOR TOP OF CURB, CENTER LINE OF STREETS, OR CENTER LINE OF ALLEYS ARE SHOWN BY CIRCLES ON PROFILES. AT ALL POINTS BETWEEN DESIGNATED POINTS THE GRADE SHALL BE ESTABLISHED SO AS TO CONFORM TO A STRAIGHT LINE DRAWN BETWEEN SAID DESIGNATED POINTS. SEWER LINES ARE IN FEET ABOVE M.S.L. 8.25 SEA LEVEL DATUM OF 1929.
 WORK SHALL BE CONSTRUCTED ACCORDING TO THE STANDARD SPECIFICATIONS FOR PUBLIC WORKS CONSTRUCTION (1970 EDITION) AND SPECIAL COUNTY ORDINANCES PERTAINING TO THE CONSTRUCTION OF SANITARY SEWERS (DIVISION 507.102.10.2.2.3) AND SHALL BE PROTECTED BY THE PRESENCE OF THE COUNTY ENGINEER.
 WHERE WORK CAN BE STARTED, THE CONTRACTOR MUST OBTAIN A PERMIT TO EXCAVATE IN COUNTY STREETS FROM THE L.A. COUNTY ROAD BUREAU, DISTRICT OFFICE NO. 10, AND PAY A FEE TO THE COUNTY ENGINEER, ROOM 536, COUNTY ENGINEERING BUILDING, 180 WEST SECOND STREET OR... REGIONAL OFFICE, SANFICENTO TO COVER THE COST OF CONSTRUCTION INSPECTION AND RECORD PLANS.
 APPROVAL OF THIS PLAN BY THE COUNTY OF LOS ANGELES DOES NOT CONSTITUTE A REPRESENTATION AS TO THE ACCURACY OF THE LOCATION OR THE EXISTENCE OR NON-EXISTENCE OF ANY UNDERGROUND UTILITY PIPE, OR STRUCTURE WITHIN THE LIMITS OF THIS PROJECT. THIS NOTE APPLIES TO ALL PAGES.
 IF WORK IS TO BE DONE IN A STATE HIGHWAY, A PERMIT MUST BE OBTAINED FROM THE STATE OF CALIFORNIA, DIVISION OF HIGHWAYS, 130 SOUTH BRIDGE STREET, LOS ANGELES, CALIFORNIA.

COUNTY OF LOS ANGELES, CALIFORNIA
 JOHN A. LAMBE, COUNTY ENGINEER J. D. PARKURST, CHIEF ENGINEER
 CO. 348465, NO. 32
 APPROVED BY [Signature] DATE 10-26-70 OFFICE ENGINEER
 CHECKED BY [Signature] DATE
 REG. C. E. NO. 4330

42273



P.C. 8494 PAGE 2

NO CHARGE FOR CONNECTIONS

42274

