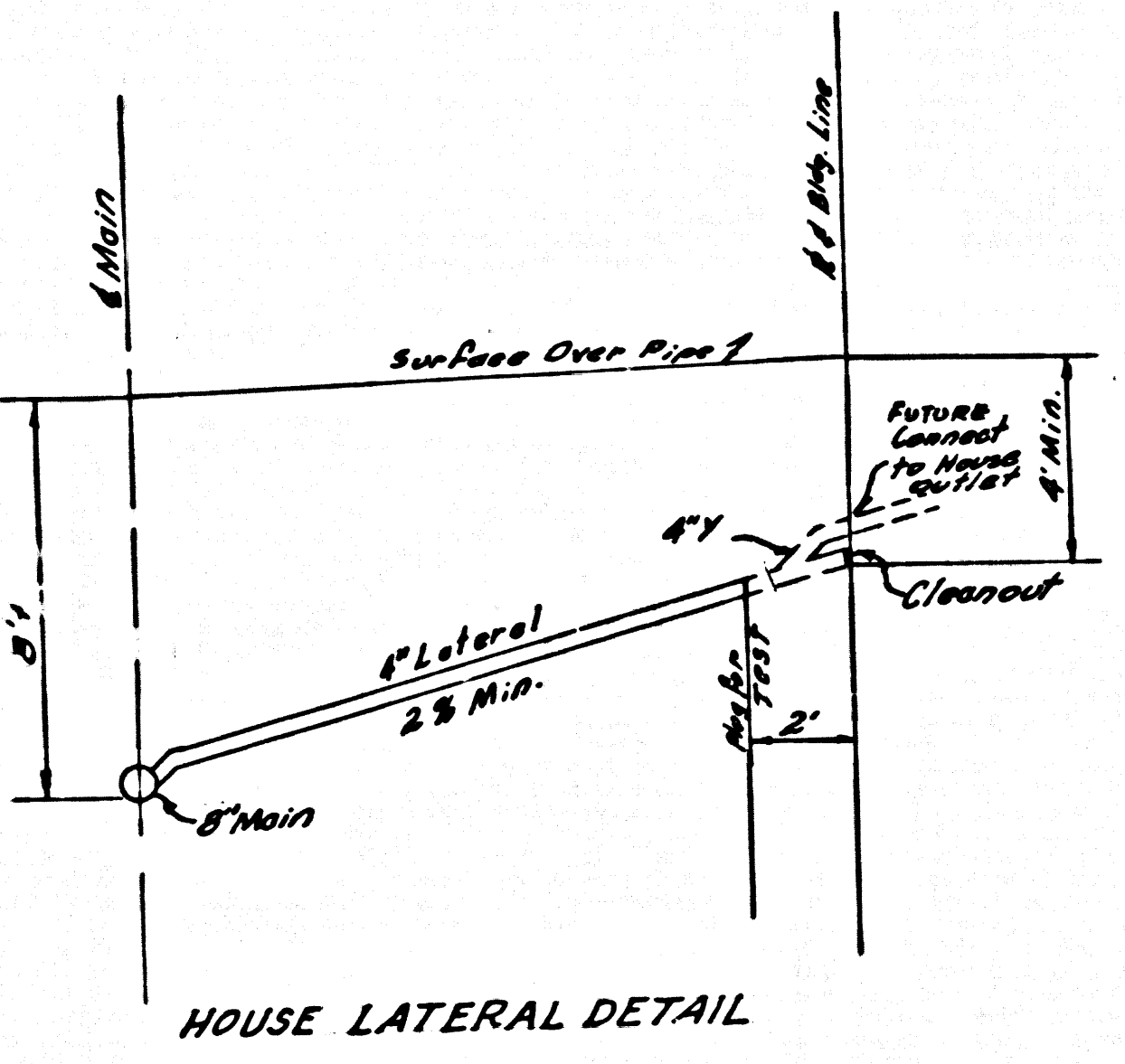
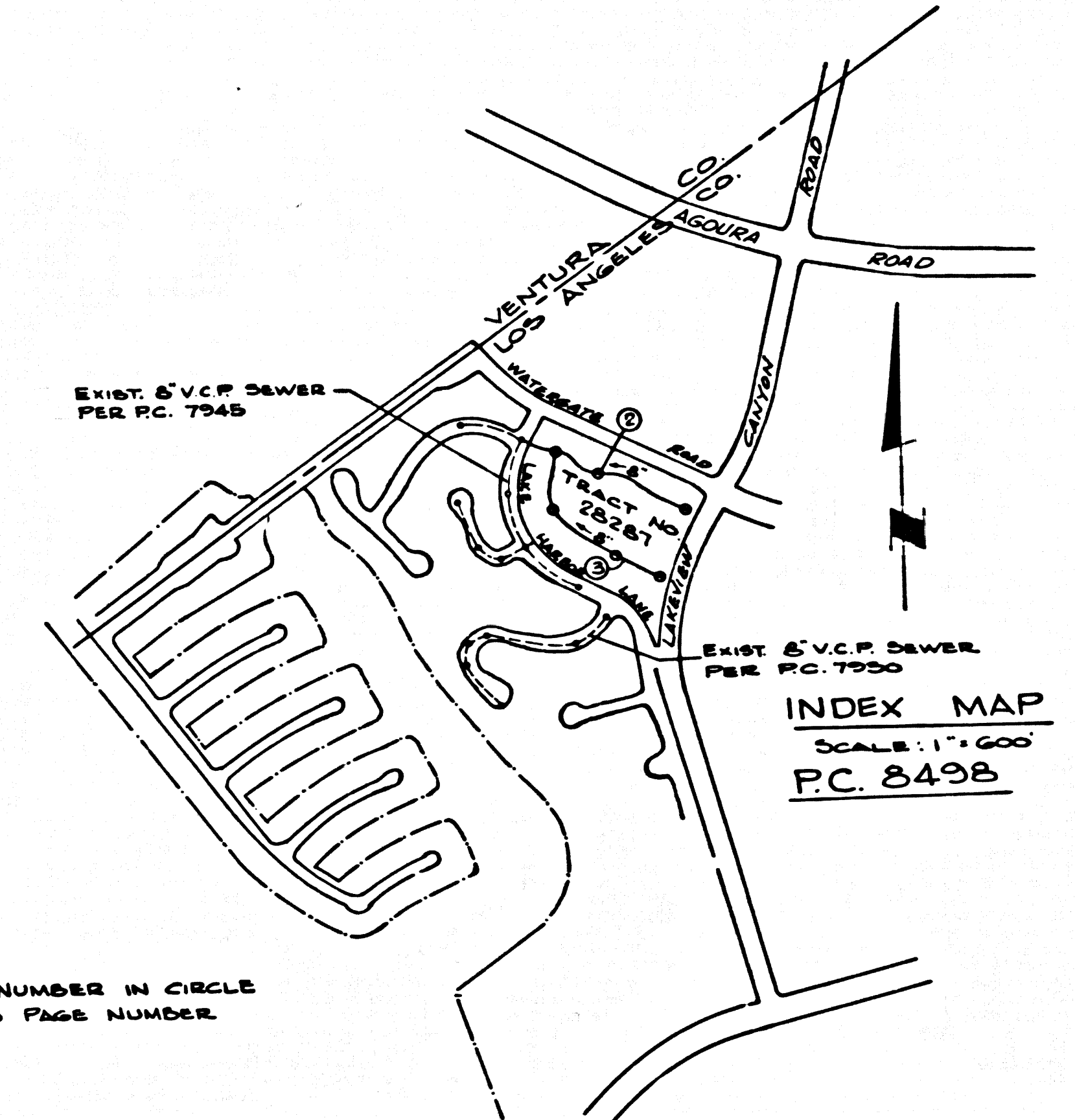


B.M. BY 7556 ELEV. 928.446
 RDBM TAG CTR CB NR BCR LEFT
 TURN POCKET TO GOLF COURSE 6FT. N.
 + 80 FT. W. CL INT. AGUIRA RD & LINDERO
 CYN. RD. MALIBU QUAD. 19 65.



CALABASAS BLDG. DIST. NO. 91

- NOTE:
- HOUSE LATERALS TO BE CONSTRUCTED WITH INVERTS AT PROPERTY LINE & FEET BELOW CURB GRADE EXCEPT AS NOTED.
 - PROVIDE STAKES ON THE PROPERTY LINE OR PROPERTY LINES PRODUCED AT RIGHT ANGLES TO THE SEWER LINE AT THE CENTER LINE OF EACH MANHOLE.
 - NO REPRESENTATIVE OF THE COUNTY ENGINEER WILL SURVEY OR LAY OUT ANY PORTION OF THE WORK.
 - THE PRIVATE ENGINEER SHALL FURNISH THE COUNTY ENGINEER WITH GRADE SHEETS AND STATIONING FOR ALL HOUSE LATERALS AND "T" OR "T" BRANCHES AND SHALL PROVIDE STAKES FOR THEM AT THESE PROPER LOCATIONS WITH STATIONING PLAINLY MARKED. ALL HOUSE LATERALS SHALL BE CONSTRUCTED IN A STRAIGHT ALIGNMENT AT RIGHT ANGLES FROM THE MAIN LINE SEWER EXCEPT AS SHOWN ON THE PLANS. HOUSE LATERALS FROM CHIMNEYS SHALL NOT HAVE AN ANGLE OF LESS THAN 45° WITH THE MAIN LINE SEWER. ANY CHANGE IN ALIGNMENT SHALL BE REQUESTED IN WRITING BY THE PRIVATE ENGINEER.
 - THE PRIVATE ENGINEER SHALL FURNISH THE HOUSE LATERAL DEPTH AT THE PROPERTY LINE BELOW THE TOP OF CURB ELEVATION FOR EACH HOUSE LATERAL ON THE GRADE SHEET.
 - NO REVISIONS SHALL BE MADE IN THESE PLANS WITHOUT THE APPROVAL OF THE COUNTY ENGINEER.
 - THE CONTRACTOR SHALL NOTIFY THE CONSTRUCTION DIVISION BY TELEPHONE, MALIBU 947-47, EXT. 8158, AT LEAST TWENTY-FOUR HOURS BEFORE STARTING ANY WORK UNDER THIS CONTRACT.
 - ALL STRUCTURES SHALL BE EITHER BRICK MANHOLES PER S-2 OR PRECAST CONCRETE MANHOLES PER S-26 EXCEPT AS NOTED.
 - "T" OR "T" BRANCHES MAY BE USED FOR CONNECTIONS TO MAINLINE SEWERS EXCEPT AS NOTED.
 - MANHOLE TOPS IN UNIMPROVED AREAS OF "W" TO BE 2.0 INCHES ABOVE FINISHED GRADE.
 - USE 8 INCH STRONG FLEXIBLE PIPE, ALL PIPE IS STANDARD DEPTH EXCEPT AS NOTED.
 - VERTICAL CLAY PIPE JOINTS SHALL BE TYPE "B", "T", OR "C" PER STANDARD SPECIFICATIONS SECTION 208-2.
 - IF A POWER POLE IS WITHIN THREE FEET OF THE SEWER, THE SEWER SHALL BE ENCASED, PER S-23, TWO FEET ON EACH SIDE FROM THE POINT OF INTERFERENCE.
 - IF DURING THE COURSE OF CONSTRUCTION IT IS DETERMINED THAT THERE IS LESS THAN FOUR FEET OF COVER OVER THE TOP OF A MAIN LINE OR HOUSE LATERAL V.C.P. SEWER WHICH IS NOT INDICATED ON THE PLANS, THE PIPE SHALL BE ENCASED PER S-28 UNLESS OTHERWISE APPROVED BY THE COUNTY ENGINEER.
 - RESURFACE ALL TRENCHES WITHIN PAVED AREAS TO MEET L.A. COUNTY ROAD DEPT. OR CALIFORNIA STATE HIGHWAY REQUIREMENTS IN ACCORDANCE WITH PERMITS.
 - SEWERS TO BE TYPED FOR TARIFFS PER SECTION 208-2.3 OF THE SPECIAL PROVISIONS.
 - REFER TO SECTION 714-1 OF THE STANDARD SPECIFICATIONS REGARDING SANITARY COVERS.
 - ALL JOINTS BETWEEN CAST IRON PIPE AND VERTICAL CLAY PIPE SHALL BE MADE WITH A RUBBER SLEEVE JOINT, TYPE "C" OR "B", (WITH BUSHING IF NECESSARY) PER STANDARD SPECIFICATIONS, SECTION 208-2.
- THE FOLLOWING LATEST REVISIONS SHALL BE FILED IN THE OFFICE OF THE COUNTY ENGINEER SHALL APPLY IN THE CONSTRUCTION OF THIS PROJECT.

8 INCH	0.1
MINIMUM PUBLIC SAFETY REQUIREMENTS	0.2
BRICK MANHOLE	0.3
NON-REINFORCED PRECAST CONCRETE MANHOLE	0.35
MANHOLE FRAME AND COVER	0.38
STANDARD MANHOLE ELEV.	0.17
REWORKING FOR SEWER PIPE	0.38
CAULKING AND ENCASEMENT	0.38
PIPE OR THE SUPPORT	0.38
ALLOWABLE TRENCH WIDTHS	0.38

PROFILE, ALIGNMENT AND GRADE OF
SANITARY SEWERS P.C. 8498
 TO BE CONSTRUCTED IN PAGE 1

TRACT NO. 28287
 PRIVATE CONTRACT NO. 8498

W.S. 93
 2 SHEETS; 3 PAGES
 SCALE: HORIZ. 1"=40'
 VERT. 1"=4'
 JUNE 1970
 PREPARED IN THE OFFICES OF
MCINTIRE & QUIROS, INC.
 32123 W. LINDERO CANYON RD., WESTLAKE VILLAGE, CALIF.
 BY: *George Jorgensen*
 GEORGE JORGENSEN REG. C. E. NO. 15810

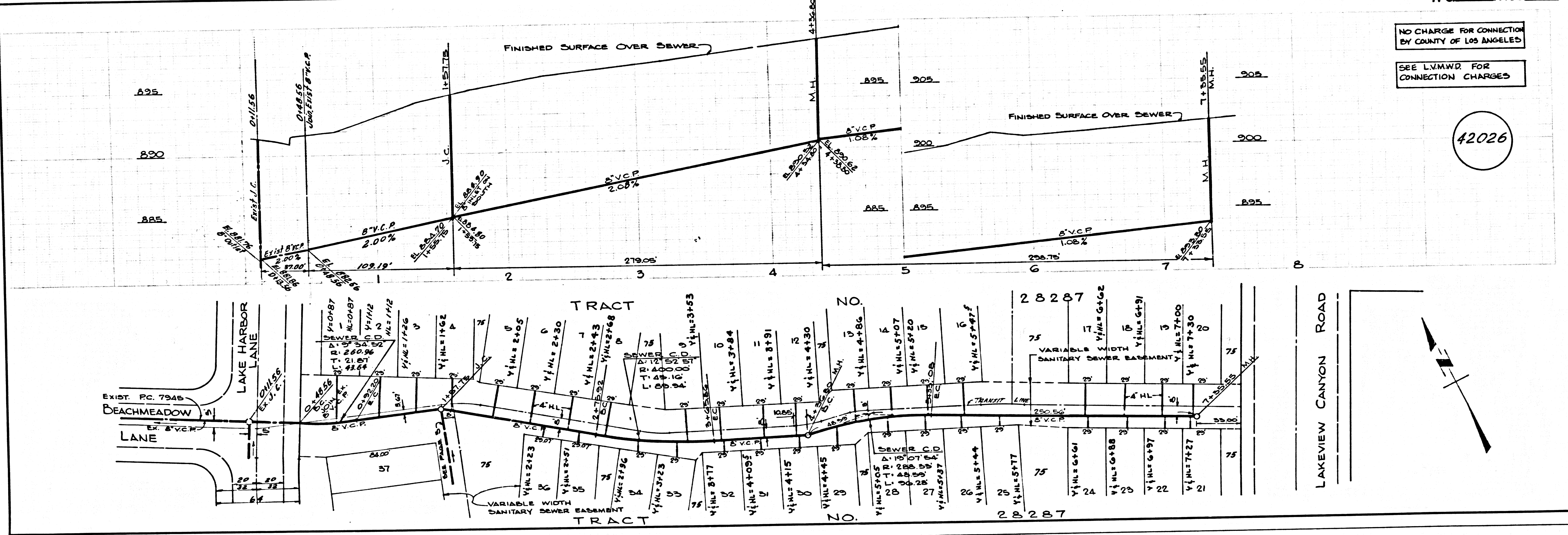
NOTE:
 GRADES TO WHICH THIS IMPROVEMENT IS TO BE CONSTRUCTED ARE SHOWN ON PLANS AND PROFILES. GRADE POINTS FOR TOP OF CURB, CENTER LINE OF SEWER, OR CENTER LINE OF ALLEYS ARE SHOWN BY CIRCLES ON PROFILES. AT ALL POINTS BETWEEN DESIGNATED POINTS THE GRADE SHALL BE ESTABLISHED SO AS TO CONFORM TO A STRAIGHT LINE DRAWN BETWEEN SAID DESIGNATED POINTS. (THIS SECTION) ELEVATIONS ARE IN FEET ABOVE U.S.C. & G.S. SEA LEVEL DATUM OF 1929. (OTHER SECTIONS) ELEVATIONS SHALL BE CONSTRUCTION ACCORDING TO THE STANDARD SPECIFICATIONS FOR PUBLIC WORKS CONSTRUCTION, AND SPECIAL PROVISIONS FOR THE CONSTRUCTION OF SANITARY SEWERS DATED APRIL 7, 1970, AND SHALL BE PROSECUTED ONLY IN THE PRESENCE OF THE COUNTY ENGINEER.
 BEFORE WORK CAN BE STARTED, THE CONTRACTOR MUST OBTAIN A PERMIT TO RECLAIM IN COUNTY STREETS FROM THE L.A. COUNTY ROAD DEPT., DISTRICT OFFICE NO. 1, 2, 3, AND PAY A FEE TO THE COUNTY ENGINEER, ROOM 216, COUNTY ENGINEERING BUILDING, 138 SOUTH SPRING STREET, LOS ANGELES, CALIF. MALIBU 947-47.
 APPROVAL OF THIS PLAN BY THE COUNTY OF LOS ANGELES DOES NOT CONSTITUTE A REPRESENTATION AS TO THE ACCURACY OF THE LOCATION OF OR THE EXISTENCE OR NON-EXISTENCE OF ANY UNDERGROUND UTILITY PIPE, OR STRUCTURE WITHIN THE LIMITS OF THE PROJECT. THIS NOTE APPLIES TO ALL PAGES.
 IF WORK IS TO BE DONE IN A STATE HIGHWAY, A PERMIT MUST BE OBTAINED FROM THE STATE OF CALIFORNIA, DIVISION OF HIGHWAY, 138 SOUTH SPRING STREET, LOS ANGELES, CALIFORNIA.

COUNTY OF LOS ANGELES, CALIFORNIA
 JOHN A. LAMBIE, COUNTY ENGINEER LAS VIRGENES MUNICIPAL WATER DIST.
 APPROVED BY: *[Signature]* DATE: 7-31-70
 APPROVED BY: *[Signature]* DATE: 7-31-70
 CHECKED BY: *[Signature]* DATE: 7-31-70
 REG. C. E. NO. 3464

COLLECT CHARGES AS INDICATED

42025

P. C. 8498 PAGE 2



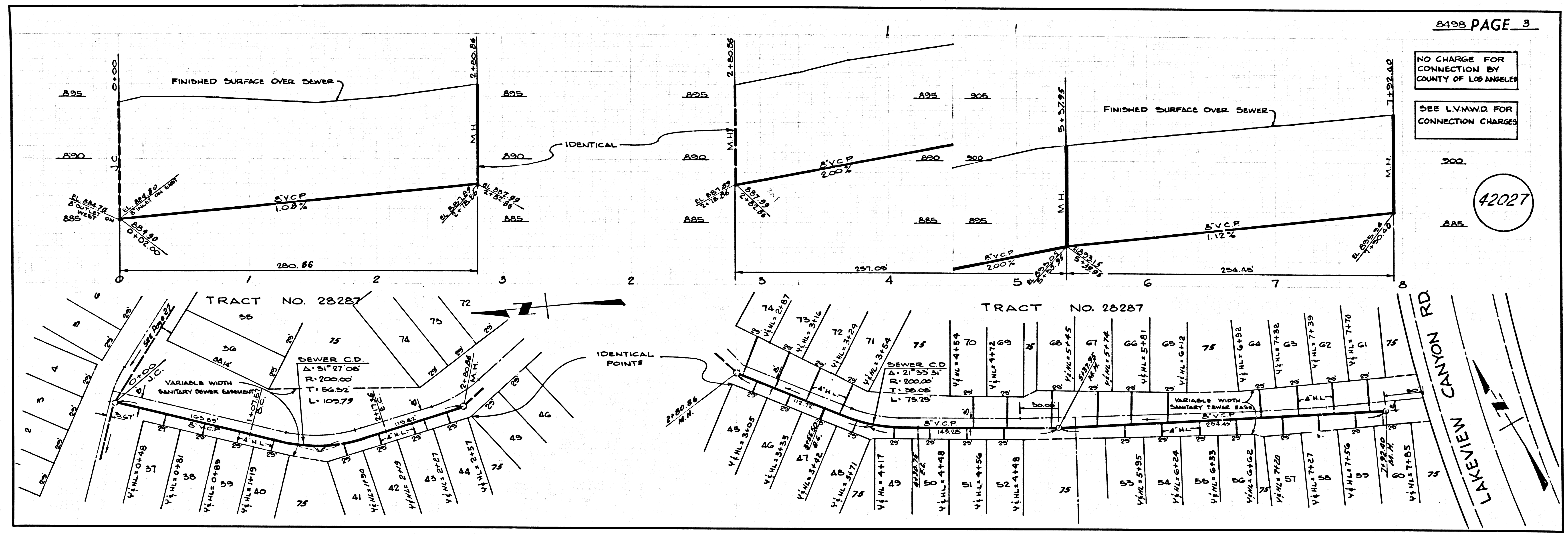
NO CHARGE FOR CONNECTION BY COUNTY OF LOS ANGELES
 SEE LVMWD FOR CONNECTION CHARGES

42026

NO CHARGE FOR CONNECTION BY COUNTY OF LOS ANGELES

SEE L.V.M.W.D. FOR CONNECTION CHARGES

42027



L.A. COUNTY SEWER SHEET NO. 2 SOUTHERN CALIFORNIA BLUEPRINT CO. 1955 1248