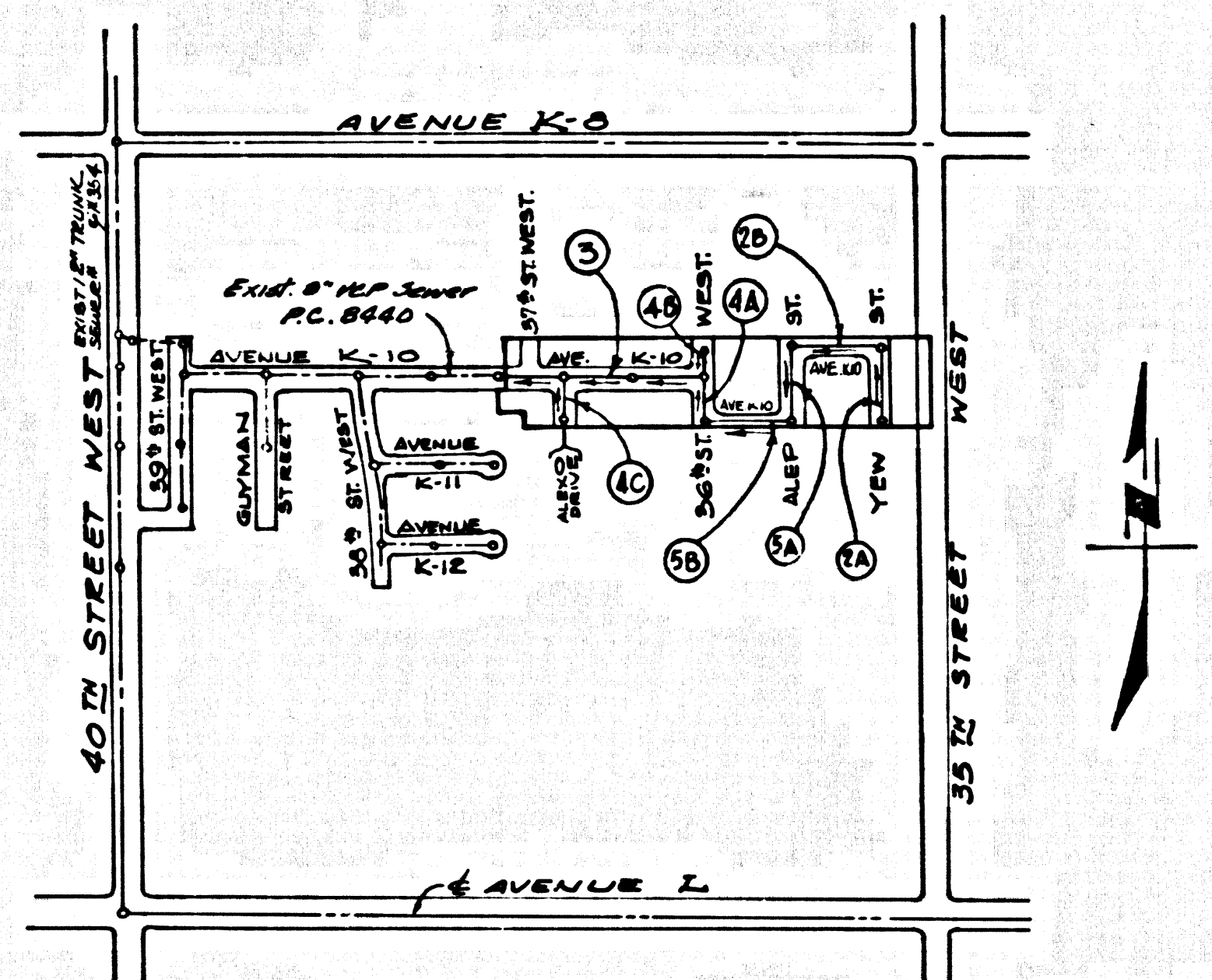


S.M.B.L. No. 388 ELEV. 2426.377
 CE Ave. & 10th St. @ E. NT. of
 AVENUE K-10 40th STREET WEST
 WAD. (77N., 1212W., E. 13 W., S. 20, 22, 23,
 30, 32, 34) S.E. EDGE
 Lancaster QUAD. 1965



INDEX MAP
 SCALE: 1" = 600'
 P.C. 8500
 TRACT NO. 30138

County Sanitation Districts shall be notified prior to use following as that requires inspection can be made (Phone 337-1025 - 634-3097)
 Acceptance of the project.

No connections for the disposal of industrial wastes shall be made to sewers shown on these drawings without written permission from the Chief Engineer and General Manager of the County Sanitation Districts.

REVISION: 9-21-70
 Revised Top of Curb and Top of M.H. Elevations on AVENUE K-10, Page 3 from Station 11+40 to Station 18+28 and on ALEXO DRIVE, Page 4c, from Station 14+5 to Station 2+75.
 APPROVED: J. J. Kopycki 16742
 CHIEF OF COUNTY ENGINEER

LANCASTER BLDG. DIST. NO. 8.0

- NOTES:
1. INVERSE STAKES ON THE PROPERTY LINE OR PROPERTY LINES PRODUCED AT RIGHT ANGLES TO THE SEWER LINE AT THE CENTER LINE OF EACH MANHOLE.
 2. NO REPRESENTATIVE OF THE COUNTY ENGINEER WILL SURVEY OR LAY OUT ANY PORTION OF THE WORK.
 3. THE PRIVATE ENGINEER SHALL FURNISH THE COUNTY ENGINEER WITH GRADE SHEETS AND STATIONING FOR ALL HOUSE LATERALS. "T" BRANCHES AND SHALL PROVIDE STAKES FOR THEM AT THEIR PROPER LOCATIONS WITH STATIONING PLAINLY MARKED. ALL HOUSE LATERALS SHALL BE CONSTRUCTED IN A STRAIGHT ALIGNMENT AT RIGHT ANGLES FROM THE MAIN LINE SEWER EXCEPT AS SHOWN ON THE PLANS. HOUSE LATERALS FROM CHIMNEYS SHALL NOT HAVE AN ANGLE OF LESS THAN 45° WITH THE MAIN LINE SEWER. ANY CHANGE IN ALIGNMENT SHALL BE REQUESTED BY WRITING BY THE PRIVATE ENGINEER.
 4. THE PRIVATE ENGINEER SHALL FURNISH THE HOUSE LATERAL DEPTH AT THE PROPERTY LINE BELOW THE TOP OF CURB ELEVATION FOR EACH HOUSE LATERAL ON THE GRADE SHEET.
 5. NO REVISIONS SHALL BE MADE IN THESE PLANS WITHOUT THE APPROVAL OF THE COUNTY ENGINEER.
 6. THE CONTRACTOR SHALL NOTIFY THE CONSTRUCTION DIVISION BY TELEPHONE, MARRIOTT 9-27, EXT. 8158, AT LEAST TWENTY-FOUR HOURS BEFORE STARTING ANY WORK UNDER THIS CONTRACT.
 7. ALL STRUCTURES SHALL BE EITHER BRICK MANHOLES PER 8-3 OR PRECAST CONCRETE MANHOLES PER 8-3-3.
 8. "Y" OR "T" BRANCHES MAY BE USED FOR CONNECTION TO MAINLINE SEWERS.
 9. IN EXTRA STRENGTH PIPE, ALL PIPE IS STANDARD WITH EXCEPT AS NOTED.
 10. VITRIFIED CLAY PIPE JOINTS SHALL BE "D", "E", AND "G" PER STD. SPECIFICATIONS SECTION 805-2.
 11. IF A POWER POLE IS WITHIN THREE FEET OF THE SEWER, THE SEWER SHALL BE ENCASED, PER 8-23, TWO FEET ON EACH SIDE FROM THE POINT OF INTERFERENCE.
 12. IF DURING THE COURSE OF CONSTRUCTION IT IS DETERMINED THAT THERE IS LESS THAN FOUR FEET OF COVER OVER THE TOP OF A MAIN LINE OR HOUSE LATERAL V.C.P. SEWER WHICH IS NOT INDICATED ON THE PLANS, THE PIPE SHALL BE ENCASED PER 8-23, UNLESS OTHERWISE APPROVED BY THE COUNTY ENGINEER.
 13. HOUSE LATERALS TO BE CONSTRUCTED WITH STREETS AT PROPERTY LINE & FEET BELOW CURB GRADE EXCEPT AS NOTED.
 14. MESSAGE ALL TRENCHES WITHIN PAVED AREAS TO MEET L.A. COUNTY ROAD DEPT. REQUIREMENTS.
 15. MESSAGE ALL TRENCHES WITHIN PAVED AREAS TO MEET L.A. COUNTY ROAD DEPT. REQUIREMENTS.
 16. SEWERS TO BE TESTED FOR LEAKAGE PER SECTION 805-2.3.7 OF THE STD. SPECIFICATIONS.
 17. REFER TO SECTION 7.10.4.1 OF THE STANDARD SPECIFICATIONS, RELATIONS SPOKE ENGINTEERS.
 18. ALL JOINTS BETWEEN CURB FROM DUNE AND VITRIFIED CLAY PIPE SHALL BE MADE WITH RUBBER GASKETS COUNTY TYPE "C" JOINTS (WITH RUBBER IF NECESSARY) PER STANDARD SPECIFICATIONS, SECTION 805-2.

THE FOLLOWING LATEST REVISED STANDARD PLANS ARE FILED IN THE OFFICE OF THE COUNTY ENGINEER AND SHALL APPLY TO THE CONTRACT WORK OF THIS PROJECT:

8-1	MINIMUM ALLOWABLE SAFETY ENCASEMENTS
8-2	SEWER MANHOLES
8-3	MANHOLES PRECAST CONCRETE MANHOLES
8-3-3	MANHOLES PRECAST CONCRETE MANHOLES
8-7	MANHOLES PRECAST CONCRETE MANHOLES
8-7-7	REINFORCED MANHOLES 8" DIA.
8-10	REINFORCED MANHOLES 8" DIA.
8-11	REINFORCED MANHOLES 8" DIA.
8-12	REINFORCED MANHOLES 8" DIA.
8-13	REINFORCED MANHOLES 8" DIA.
8-14	REINFORCED MANHOLES 8" DIA.
8-15	REINFORCED MANHOLES 8" DIA.
8-16	REINFORCED MANHOLES 8" DIA.
8-17	REINFORCED MANHOLES 8" DIA.
8-18	REINFORCED MANHOLES 8" DIA.
8-19	REINFORCED MANHOLES 8" DIA.
8-20	REINFORCED MANHOLES 8" DIA.

COLLECT CHARGES AS INDICATED

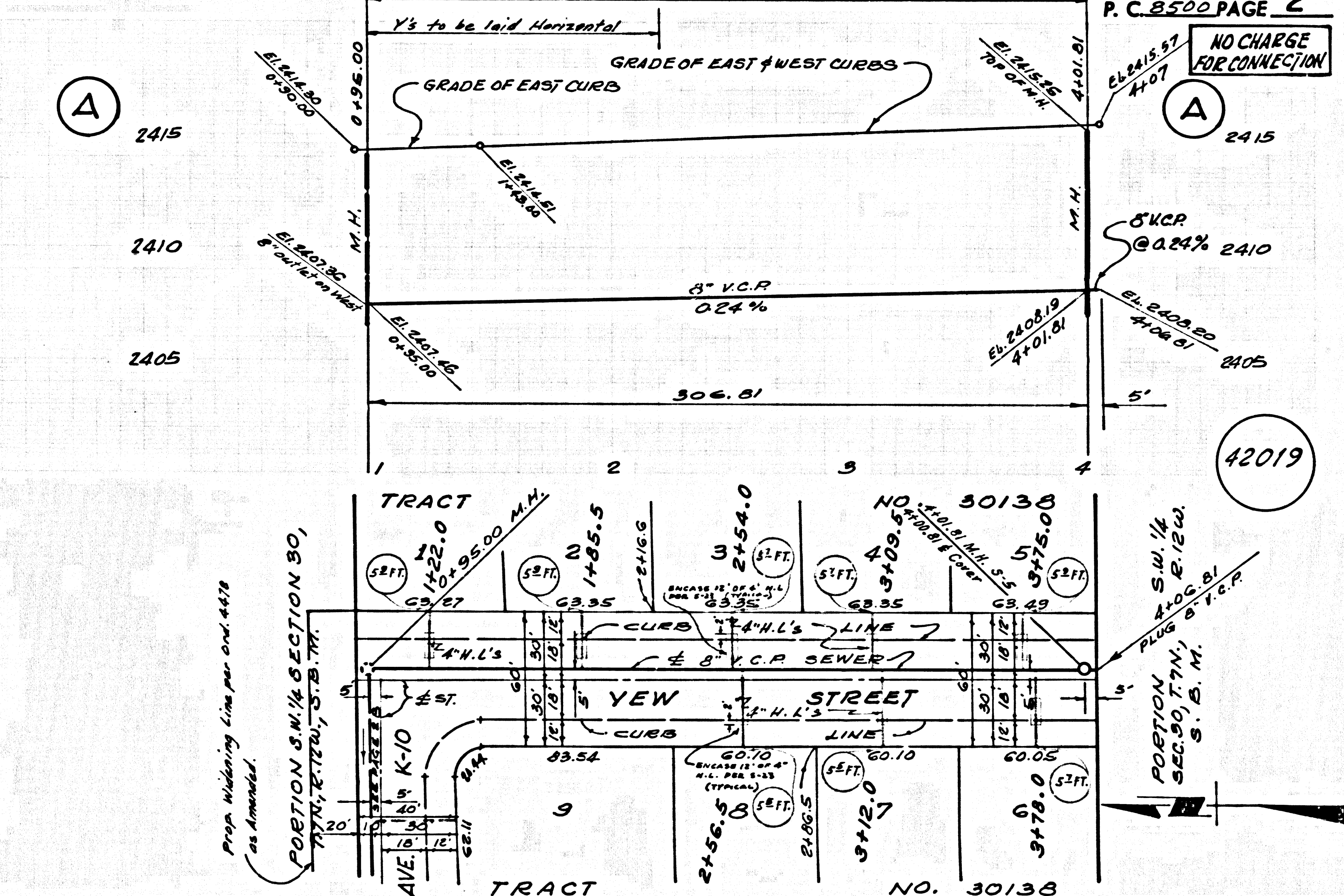
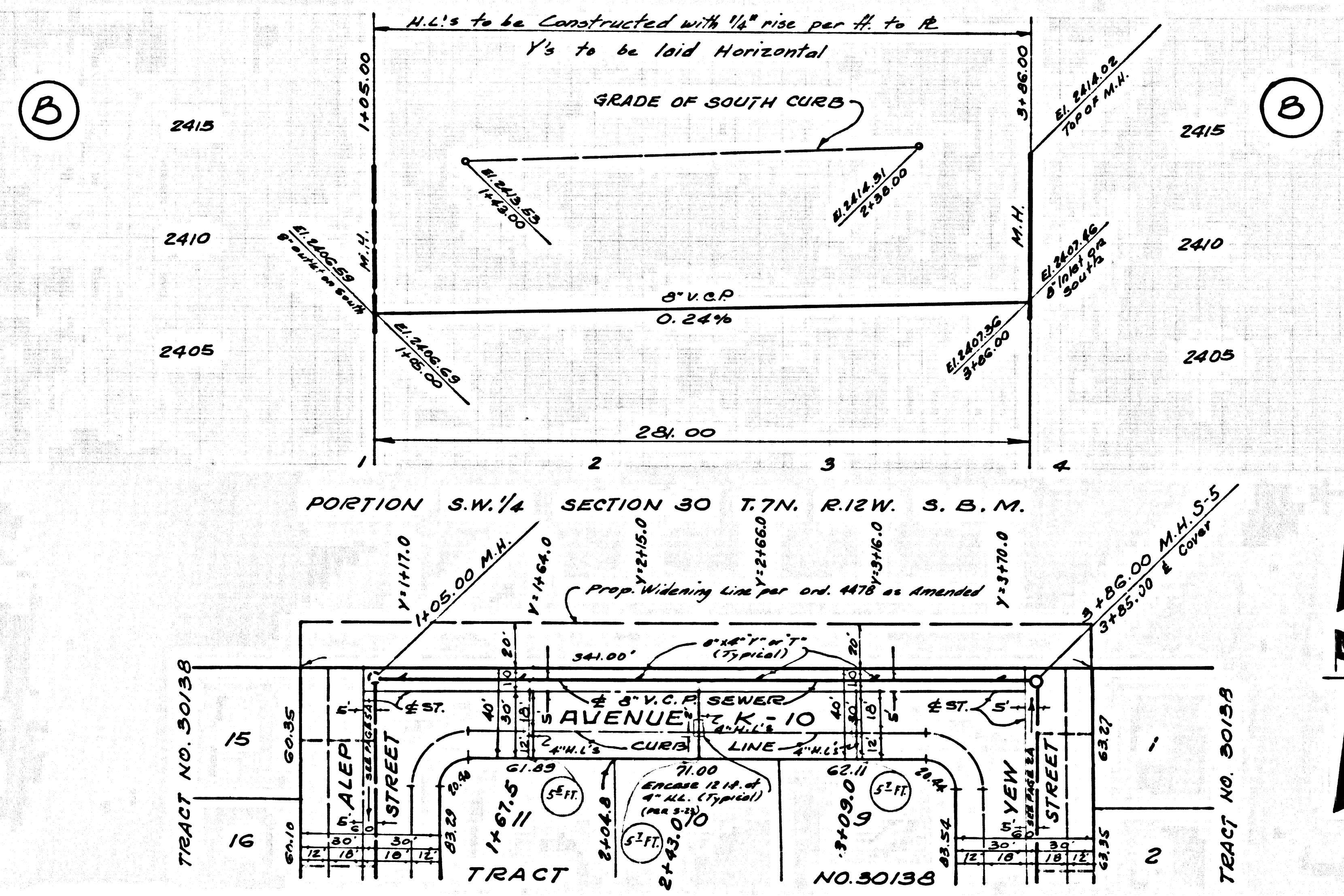
NOTICE TO CONTRACTOR
 The existence and location of any underground utility pipes or structures shown on these plans are obtained by a search of the available records to the best of my knowledge there are no existing utilities except as shown on these plans. The contractor is required to take due precautionary measures to protect the utility lines shown and any other lines not of record or not shown on these plans.
 J. J. Kopycki
 CHIEF OF COUNTY ENGINEER

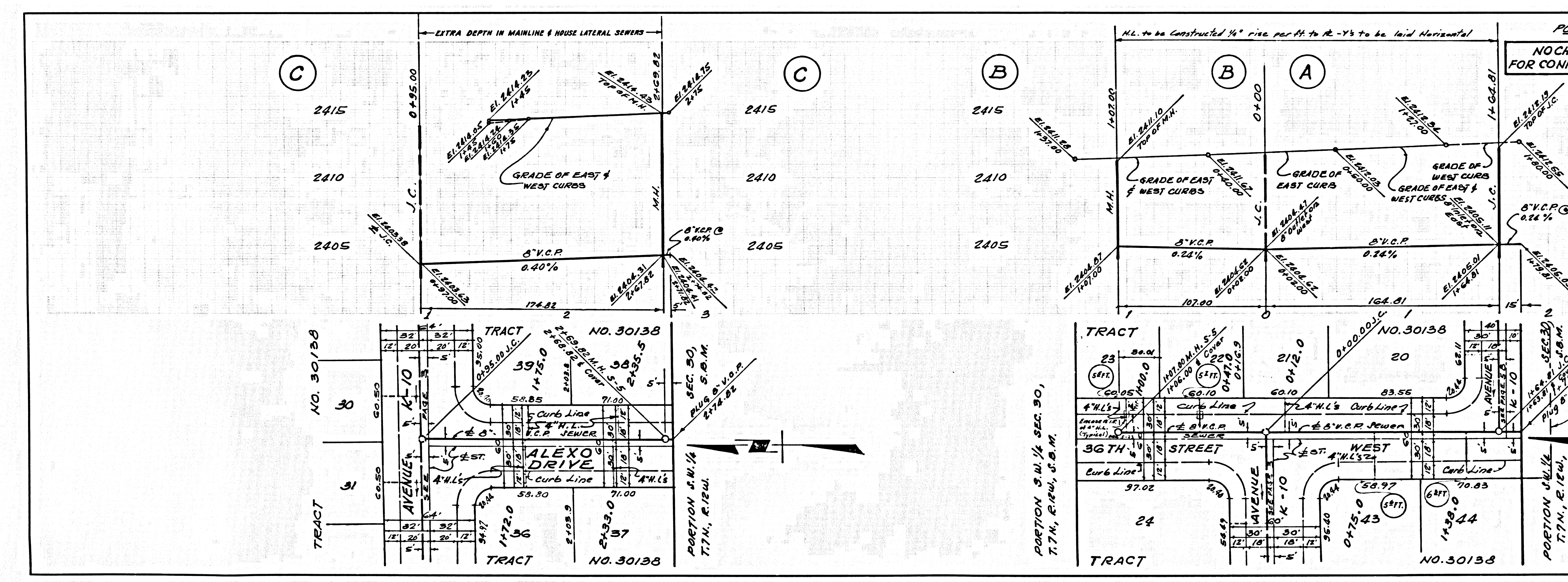
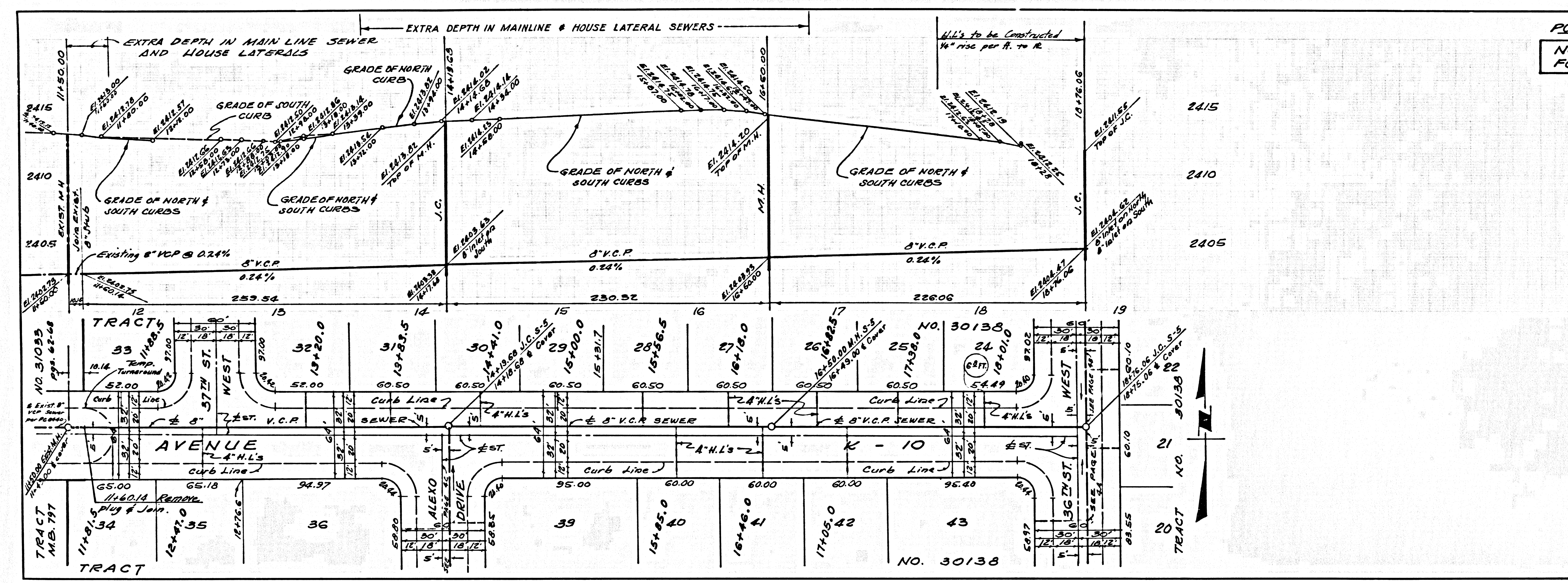
TRACT NO. 30138
 PRIVATE CONTRACT NO. 8500

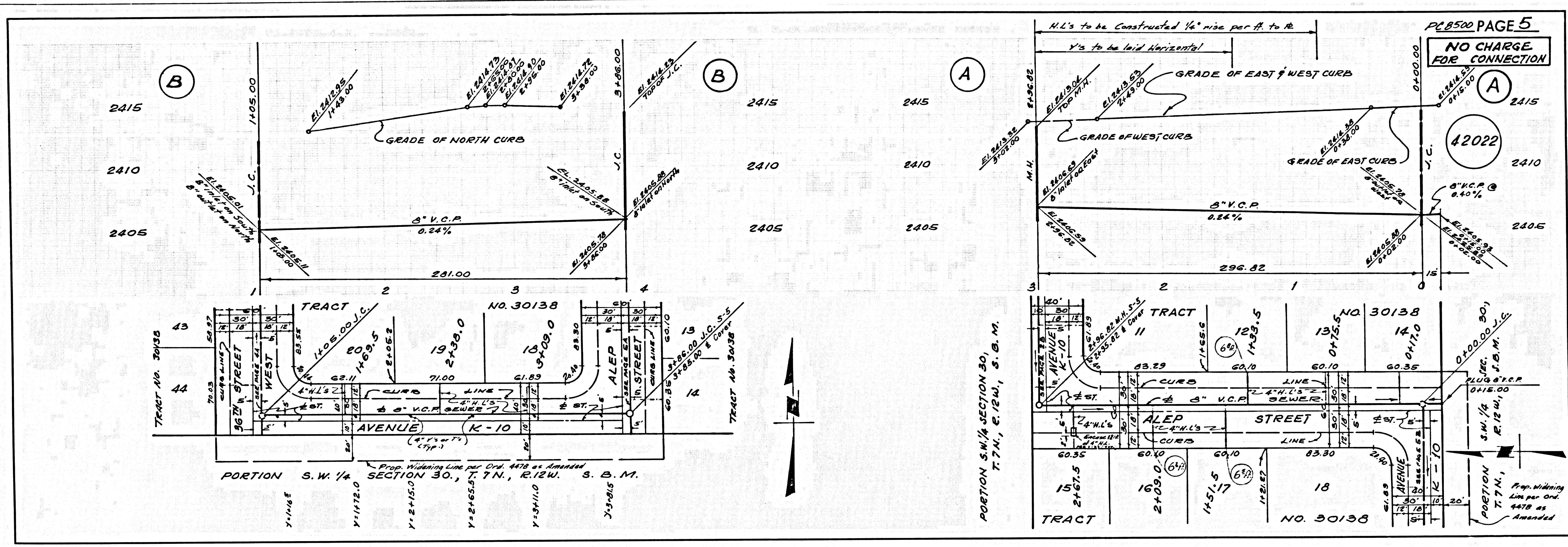
W.S. 71
 3 SHEETS, 5 PAGES
 SCALE: VERT. 1" = 4'
 HORIZ. 1" = 40'
 JULY 1970

PREPARED BY THE OFFICES OF
 CONSOLIDATED ENGINEERING CO.,
 8805 WEST OCEANIC BOULEVARD, 90211
 BEVERLY HILLS, CALIFORNIA
 REG. C. E. NO. 10915

FOR LEGEND SEE PLAN NO. 5-1
 NOTE: GRADES TO WHICH THIS IMPROVEMENT IS TO BE CONSTRUCTED ARE SHOWN ON PLANS AND PROFILE GRADE POINTS FOR TOP OF CURBS, CENTER LINE OF STREETS, OR CENTER LINE OF ALLEYS ARE SHOWN BY CIRCLES ON PROFILES. AT ALL POINTS BETWEEN DESIGNATED POINTS THE GRADE SHALL BE ESTABLISHED SO AS TO CONFORM TO A STRAIGHT LINE BETWEEN SAID DESIGNATED POINTS. ELEVATIONS ARE IN FEET ABOVE U.S.C. & G.S. SEA LEVEL DATUM OF 1929. THIS DRAWING AND THE DATA HEREON ARE HEREBY MADE A PART OF THE SPECIFICATIONS. WORK SHALL BE CONSTRUCTED ACCORDING TO STANDARD SPECIFICATIONS FOR PUBLIC WORKS WITH PROVISIONS AS INDICATED HEREON. APPROVED FOR THE COUNTY ENGINEER: J. J. Kopycki 16742
 COUNTY OF LOS ANGELES, CALIFORNIA
 JOHN A. LAMBIE, COUNTY ENGINEER J. D. PARKHURST, CHIEF ENGINEER
 APPROVED BY: J. J. Kopycki 16742 REGIONAL ENGINEER APPROVED BY: J. D. Parkhurst 16742 OFFICE ENGINEER
 CHECKED BY: J. J. Kopycki 9/12/70
 42018
 J.N. 0250.02







PC 8500 PAGE 5
 NO CHARGE FOR CONNECTION

42022

Prop. Widening Line per Ord. 4478 as Amended
 T. 7 N., R. 12 W., S. B. M.

PAGE