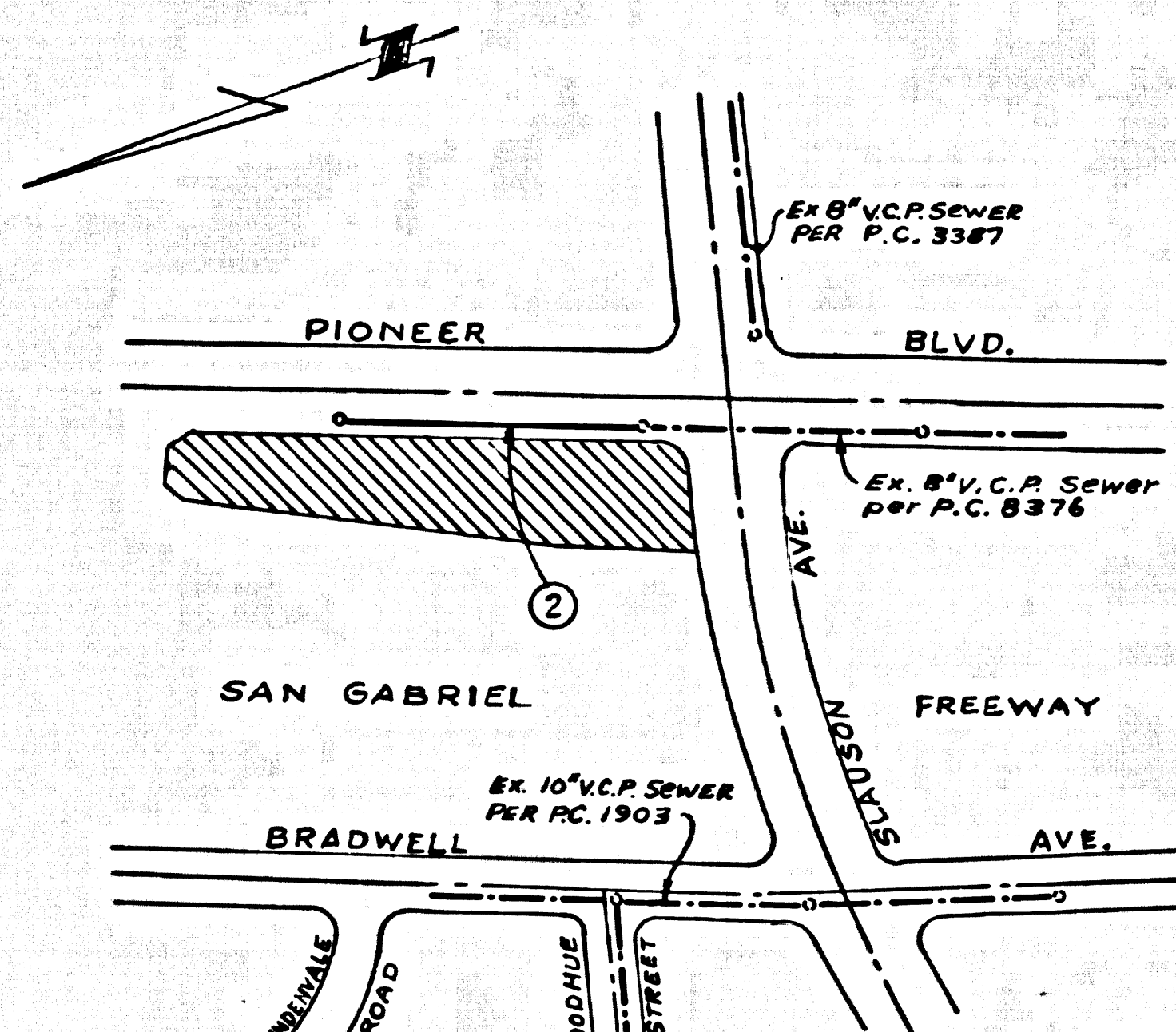


B.M. BY 1686 ELEV. 158.194  
 L.E. 81 FT. E. OF B.C.R. AT NE. COR. WASHINGTON  
 BLDG. & PIONEER BLVD. 35 FT. N. & 75 FT. E.  
 OF E. INTERSECTION.  
 RIVERA QUAD. 19.65

NOTE:  
 Main line not to be extended service  
 Nly to be from Waddell Street



INDEX MAP P.C. 8509  
 SCALE: 1" = 200'  
 PIONEER BOULEVARD

**NOTICE TO CONTRACTOR**  
 THE EXISTENCE AND LOCATION OF ANY UNDERGROUND UTILITY  
 PIPES OR STRUCTURES SHOWN ON THESE PLANS ARE OBTAINED  
 BY A SEARCH OF THE AVAILABLE RECORDS. TO THE BEST OF MY  
 KNOWLEDGE, THERE ARE NO EXISTING UTILITIES EXCEPT AS SHOWN ON  
 THESE PLANS.  
 THE CONTRACTOR IS REQUIRED TO TAKE DUE PRECAUTIONARY  
 MEASURES TO PROTECT THE UTILITY LINES SHOWN AND ANY OTHER  
 LINES NOT OF RECORD OR NOT SHOWN ON THESE PLANS.  
 JOHN B. ABELL R.C.E. 9070

No connections for the disposal of  
 industrial wastes shall be made to  
 sewers shown on these drawings  
 without written permission from the  
 Chief Engineer and General Manager  
 of the County Sanitation Districts.  
 County Sanitation Districts shall be  
 notified prior to the following in  
 that required inspection can be made  
 (Phone 387-1025 - 636-9097)

Enclosure of the project.

COLLECT CHARGES  
 AS INDICATED

WHITTIER BLDG. DIST. NO. 11

- NOTES:
- HOUSE LATERALS TO BE CONSTRUCTED WITH INVERTS AS INDICATED. ALL RISES SHALL BE AS SHOWN EXCEPT AS NOTED.
  - PROVIDE STAKES ON THE PROPERTY LINE OR PROPERTY LINES PRODUCED AT RIGHT ANGLES TO THE SEWER LINE AT THE CENTER LINE OF EACH MANHOLE.
  - NO IMPROVEMENTS OF THE COUNTY ENGINEER WILL SURVEY OR LAY OUT ANY PORTION OF THE WORK.
  - THE PRIVATE ENGINEER SHALL FURNISH THE COUNTY ENGINEER WITH GRADE SHEETS AND STATIONING FOR ALL HOUSE LATERALS AND "T" BRANCHES AND SHALL PROVIDE STAKES FOR THEM AT THEIR PROPER LOCATIONS WITH STATIONING PLAINLY MARKED. ALL HOUSE LATERALS SHALL BE CONSTRUCTED AT RIGHT ANGLES TO THE MAIN LINE SEWER EXCEPT AS SHOWN ON THE PLANS. HOUSE LATERALS FROM CHIMNEYS SHALL NOT HAVE AN ANGLE OF LESS THAN 45° WITH THE MAIN LINE SEWER. ANY CHANGE IN ALIGNMENT SHALL BE REQUESTED IN WRITING BY THE PRIVATE ENGINEER.
  - THE PRIVATE ENGINEER SHALL NOTIFY THE HOUSE LATERAL DEPT. AT THE PROPERTY LINE BELOW THE TOP OF CURB ELEVATION FOR EACH HOUSE LATERAL ON THE GRADE SHEET.
  - NO REVISIONS SHALL BE MADE IN THESE PLANS WITHOUT THE APPROVAL OF THE COUNTY ENGINEER.
  - THE CONTRACTOR SHALL NOTIFY THE CONSTRUCTION DIVISION BY TELEPHONE, MADISON 5-070, EXT. 8152, AT LEAST TWENTY-FOUR HOURS BEFORE STARTING ANY WORK UNDER THIS CONTRACT.
  - ALL STRUCTURES SHALL BE BRICK MANHOLES PER S.L. AS PRECAST CONCRETE PER S-36.
  - "T" BRANCHES SHALL BE USED FOR CONNECTIONS TO MAINTAIN SEWER INTEGRITY.
  - MANHOLES SHALL BE CONSTRUCTED PER STANDARD SPECIFICATIONS FOR MANHOLES PER S-36.
  - USE EXIST. STRENGTH PIPE. ALL PIPE IS STANDARD DEPTH EXCEPT AS NOTED.
  - VERTICAL CLAY PIPE JOINTS SHALL BE TYPE "C", "D", OR "E" OF THE STANDARD SPECIFICATIONS SECTION 308-2.
  - IF A POWER POLE IS WITHIN THREE FEET OF THE SEWER, THE SEWER SHALL BE ENCASED, PER S-25, TWO FEET ON EACH SIDE FROM THE POINT OF INTERFERENCE.
  - IF DURING THE COURSE OF CONSTRUCTION IT IS DETERMINED THAT THERE IS LESS THAN FOUR FEET OF COVER OVER THE TOP OF A MAIN LINE OR HOUSE LATERAL V.C.P. SEWER WHICH IS NOT INDICATED ON THE PLANS, THE PIPE SHALL BE ENCASED PER S-25, CASE "X" UNLESS OTHERWISE APPROVED BY THE COUNTY ENGINEER.
  - INDICATE ALL TRENCHES WITHIN PAVED AREAS TO MEET L.A. COUNTY ROAD DEPT. OR CALIFORNIA STATE HIGHWAY REQUIREMENTS IN ACCORDANCE WITH PERMITS.
  - SEWERS TO BE TESTED FOR LEAKAGE PER SECTION 308-2.17 OF THE STANDARD SPECIFICATIONS.
  - PIPE TO SECTION 7-16.1 OF THE STANDARD SPECIFICATIONS, REGARDING SPECIFICATIONS.
  - ALL JOINTS BETWEEN CLAY PIPE AND VITRIFIED CLAY PIPE SHALL BE MADE WITH A RUBBER BERRY JOINT, TYPE "C" OR "D", WITH WASHING IF NECESSARY PER STANDARD SPECIFICATIONS, SECTION 308-2.

THE FOLLOWING LATER REVISIONS STANDARD PLANS ON FILE IN THE OFFICE OF THE COUNTY ENGINEER SHALL APPLY IN THE CONSTRUCTION OF THE PROJECT.

REVISION	DATE
MINIMUM PUBLIC SAFETY REQUIREMENTS	8-7
BRICK MANHOLE	8-8
NON-REINFORCED PRECAST CONCRETE MANHOLE	8-8
MANHOLE FRAME AND COVER	8-26
STANDARD MANHOLE DEPT.	8-27
STAKING FOR SEWER PIPE	8-28
ENCASING AND ENCASEMENT	8-28
TYPE OF THE SUPPORT	8-28
ALLOWABLE TRENCH WIDTHS	8-28

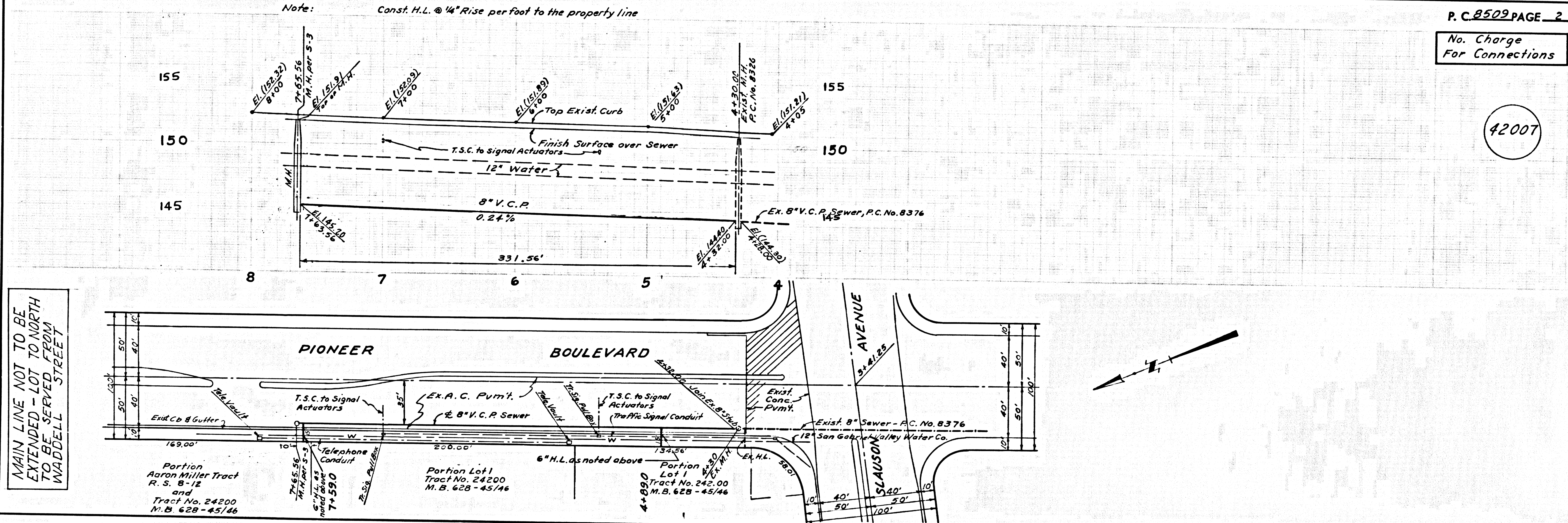
PROFILE, ALIGNMENT AND GRADE OF  
 SANITARY SEWERS P.C. 8509  
 TO BE CONSTRUCTED IN PAGE 1

PIONEER BOULEVARD  
 PRIVATE CONTRACT NO. 8509

W.S. 36  
 1 SHEET ; 2 PAGES  
 SCALE: VERT. 1" = 4' HORIZ. 1" = 40'  
 AUGUST, 1970  
 PREPARED IN THE OFFICES OF  
 JOHN B. ABELL  
 3638 1/2 E. Beverly Boulevard  
 Los Angeles, Calif. 90022-Ph. 723-5812  
 REG. C. E. NO. 9070

NOTES:  
 GRADES TO WHICH THIS IMPROVEMENT IS TO BE CONSTRUCTED ARE SHOWN ON PLANS AND PROFILES. GRADE POINTS FOR TOP OF CURB, CENTER LINE OF STREETS, OR CENTER LINE OF ALLEYS ARE SHOWN BY CIRCLES ON PROFILES. AT ALL POSITIONS BETWEEN DESIGNATED POINTS THE GRADE SHALL BE ESTABLISHED SO AS TO CONFORM TO A STRAIGHT LINE DRAWN BETWEEN SAID DESIGNATED POINTS. REVISIONS ARE IN FEET ABOVE U.S.C. & G.S. SEA LEVEL DATUM OF 1929.  
 APPROVAL OF THIS PLAN BY THE COUNTY OF LOS ANGELES DOES NOT CONSTITUTE A REPRESENTATION AS TO THE ACCURACY OF THE LOCATION OF OR THE EXISTENCE OR NON-EXISTENCE OF ANY UNDERGROUND UTILITY PIPE, OR STRUCTURE WITHIN THE LIMITS OF THIS PROJECT. THIS NOTE APPLIES TO ALL PAGES.  
 IF WORK IS TO BE DONE IN A STATE HIGHWAY, A PERMIT MUST BE OBTAINED FROM THE STATE OF CALIFORNIA, DIVISION OF HIGHWAYS, 138 SOUTH SPRING STREET, LOS ANGELES, CALIFORNIA.  
 COUNTY OF LOS ANGELES, CALIFORNIA  
 JOHN A. LAMBIE, COUNTY ENGINEER J. D. PARKHURST, CHIEF ENGINEER  
 CO. SAN DIST. NO. 11  
 APPROVED BY: [Signature] OFFICE ENGINEER  
 CHECKED BY: [Signature] DATE 8/27/70  
 REG. C. E. NO. 15931

JN 0370.61



MAIN LINE NOT TO BE  
 EXTENDED - LOT TO NORTH  
 TO BE SERVED FROM  
 WADDELL STREET

P.C. 8509 PAGE 2  
 No. Charge  
 For Connections  
 42007

BC 8200

PIONEER BLVD.