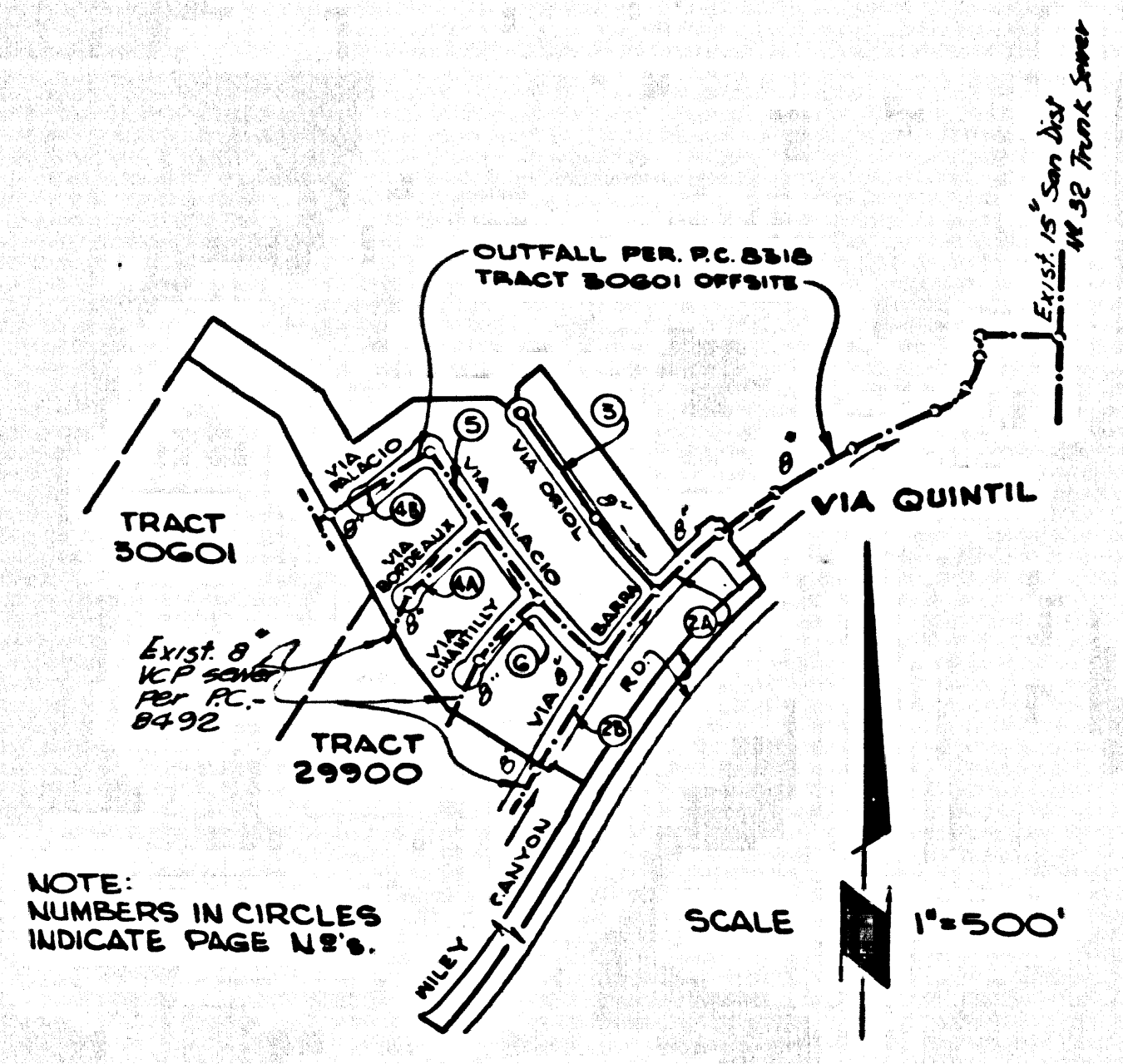


B.M. B.L.G.O.B. ELEV. 1216.346
 U.S.G. and G.S. Mon. S. end bridge 53.14
 over Alpacito Creek S.W. of S. end C.P.
 18'E. of San Fernando Rd. 1.0 mi. N. of
 Newhall Sta. Mark. (9375-1953)
 NEWHALL QUAD. 19 63



INDEX MAP
 TRACT 29901
 P.C. 8512.

19. Special Backfill in Designated Areas:
- Backfill trench and replace other earth removed so as to achieve the natural or finished grades and slopes shown on the grading plan approved for this development by the Building and Safety Division.
 - All backfill and earth replaced shall be compacted to a minimum of 90% of maximum density per ASTM Standard Method of Test D693-57T as modified acceptance certification of such compaction shall be submitted to the Construction Division.

NOTICE TO CONTRACTOR
 The existence and location of any underground pipes, or structures shown on these plans, were obtained by a search of available records. To the best of our knowledge, there are no existing utilities except as shown on these plans.
 The Contractor is required to take precautionary measures to protect the existing utility lines and any lines not of record or not shown on these plans.

Lots 92 and 93 are Recreation or Park Lots and are not served with house laterals.

Contractor to adjust existing Manholes to finished surface

No connections for the disposal of industrial wastes shall be made to sewers shown on these drawings without written permission from the Chief Engineer and General Manager of the County Sanitation Districts.

County Sanitation Districts shall be notified prior to the following so that required inspection can be made (Phone 537-1925 -)

Acceptance of the project.

Contractor must obtain as built Wye stationing from P.C. 8318 & P.C. 8492 prior to construction of house laterals on pages 2, 4, 5 & 6.

COLLECT CHARGES AS INDICATED

NEWHALL BLDG. DIST. NO. 8.2

- PROFILES, ALIGNMENT AND GRADE OF
SANITARY SEWERS
 CONSTRUCTED IN
TRACT No 29901
PRIVATE CONTRACT NO. 8512
 INDEX MAP 255521
 W.S. 82-A-3
 3 SHEETS; 6 PAGES
 SCALE: HORIZ. 1" = 40' VERT. 1" = 4'
 JULY, 1970
 PREPARED IN THE OFFICES OF
 Seward Engineering Associates, Inc.
 13705 BLAKEWAY, SUITE 100
 VAN NUYS, CALIFORNIA 91411
 By: *[Signature]*
 REG. C. E. NO. 2553
- NOTE:
 1. HOUSE LATERALS TO BE CONSTRUCTED WITH INVERTS AT PROPERTY LINE 4 FEET BELOW CURB GRADE EXCEPT AS NOTED.
 2. PROVIDE STAKES ON THE PROPERTY LINE OR PROPERTY LINES PRODUCED AT RIGHT ANGLES TO THE SEWER LINE AT THE CENTER LINE OF EACH MANHOLE.
 3. NO REPRESENTATIVE OF THE COUNTY ENGINEER WILL SURVEY OR LAY OUT ANY PORTION OF THE WORK.
 4. THE PRIVATE ENGINEER SHALL FURNISH THE COUNTY ENGINEER WITH GRADE SHEETS AND STATIONING FOR ALL HOUSE LATERALS AND "T" OR "T" BRANCHES AND SHALL PROVIDE STAKES FOR THESE AT THEIR PROPER LOCATIONS WITH STATIONING PLAINLY MARKED. ALL HOUSE LATERALS SHALL BE CONSTRUCTED IN A STRAIGHT ALIGNMENT AT RIGHT ANGLES FROM THE MAIN LINE SEWER EXCEPT AS SHOWN ON THE PLANS. HOUSE LATERALS FROM CHIMNEYS SHALL NOT HAVE AN ANGLE OF LESS THAN 45° WITH THE MAIN LINE SEWER. ANY CHANGE IN ALIGNMENT SHALL BE REQUESTED IN WRITING BY THE PRIVATE ENGINEER.
 5. THE PRIVATE ENGINEER SHALL FURNISH THE HOUSE LATERAL DEPTH AT THE PROPERTY LINE BELOW THE TOP OF CURB ELEVATION FOR EACH HOUSE LATERAL ON THE GRADE SHEET.
 6. NO INVERTS SHALL BE MADE IN THESE PLANS WITHOUT THE APPROVAL OF THE COUNTY ENGINEER.
 7. THE CONTRACTOR SHALL NOTIFY THE CONSTRUCTION DIVISION BY TELEPHONE, MARSHON 9-247, EXT. 8128, AT LEAST TWENTY-FOUR HOURS BEFORE STARTING ANY WORK UNDER THIS CONTRACT.
 8. ALL STRUCTURES SHALL BE EITHER BRICK MANHOLES PER S-1 OR PRECAST CONCRETE MANHOLES PER S-2-940 EXCEPT AS NOTED.
 9. "T" OR "T" BRANCHES MAY BE USED FOR CONNECTIONS TO MAINLINE SEWERS EXCEPT AS NOTED.
 10. MANHOLES TOPS IN UNIMPROVED PORTS OF WAY TO BE 6" ABOVE FINISHED GRADE.
 11. USE EXTRA STRENGTH PIPE. ALL PIPE IS STANDARD DEPTH EXCEPT AS NOTED.
 12. VITRIFIED CLAY PIPE JOINTS SHALL BE TYPE "B", "C", OR "D" PER STANDARD SPECIFICATIONS SECTION 308-2.
 13. IF A POWER POLE IS WITHIN THREE FEET OF THE SEWER, THE SEWER SHALL BE ENCASED PER S-25. TWO FEET ON EACH SIDE FROM THE POINT OF INTERFERENCE.
 14. IF DURING THE COURSE OF CONSTRUCTION IT IS DETERMINED THAT THERE IS LESS THAN FOUR FEET OF COVER OVER THE TOP OF A MAIN LINE OR HOUSE LATERAL V.C.P. SEWER WHICH IS NOT INDICATED ON THE PLANS, THE PIPE SHALL BE ENCASED PER S-25. UNLESS OTHERWISE APPROVED BY THE COUNTY ENGINEER.
 15. RESURFACE ALL TRENCHES WITHIN PAVED AREAS TO MEET L.A. COUNTY ROAD DEPT. OR CALIFORNIA STATE HIGHWAY REQUIREMENTS IN ACCORDANCE WITH PERMITS.
 16. REFER TO BE TESTS FOR BRIDGE PER SECTION 308-2.37 OF THE STANDARD SPECIFICATIONS.
 17. REFER TO SECTION 314.1 OF THE STANDARD SPECIFICATIONS REGARDING SAFETY CORDS.
 18. ALL JOINTS BETWEEN CAST IRON PIPE AND VITRIFIED CLAY PIPE SHALL BE MADE WITH A RUBBER SLEEVE JOINT, TYPE "C" OR "D", WITH BUSHING IF NECESSARY PER STANDARD SPECIFICATIONS, SECTION 308-2.
 THE FOLLOWING LATEST REVISED STANDARD PLANS ON FILE IN THE OFFICE OF THE COUNTY ENGINEER SHALL APPLY IN THE CONSTRUCTION OF THIS PROJECT.

BRICK	5.1
MANHOLE FRAME AND COVER	5.35
STANDARD MANHOLE STEP	5.17
REINFORCING FOR SEWER PIPE	5.28
CASTING AND INCASING	5.28
WYE OR TEE SUPPORT	5.28
ALLOWABLE TRENCH WIDTH	5.28

ISSUE NO PERMITS UNTIL P.C. 8318 & P.C. 8492 ARE ACCEPTED.

PROFILES, ALIGNMENT AND GRADE OF
SANITARY SEWERS
 CONSTRUCTED IN
TRACT No 29901
PRIVATE CONTRACT NO. 8512
 INDEX MAP 255521
 W.S. 82-A-3
 3 SHEETS; 6 PAGES
 SCALE: HORIZ. 1" = 40' VERT. 1" = 4'
 JULY, 1970
 PREPARED IN THE OFFICES OF
 Seward Engineering Associates, Inc.
 13705 BLAKEWAY, SUITE 100
 VAN NUYS, CALIFORNIA 91411
 By: *[Signature]*
 REG. C. E. NO. 2553

NOTE:
 GRADES TO WHICH THIS IMPROVEMENT IS TO BE CONSTRUCTED ARE SHOWN ON PLANS AND PROFILE. GRADE POINTS FOR TOP OF CURB, CENTER LINE OF STREET, OR CENTER LINE OF ALLEY ARE SHOWN BY CIRCLES ON PROFILES. AT ALL POINTS BETWEEN DESIGNATED POINTS THE GRADE SHALL BE ESTABLISHED SO AS TO CONFORM TO A STRAIGHT LINE DRAWN BETWEEN SAID DESIGNATED POINTS. DEVIATIONS ARE IN FEET ABOVE OR BELOW THE GRADE SHOWN BY THE LINE DRAWN BETWEEN SAID DESIGNATED POINTS.
 WORK SHALL BE CONSTRUCTED ACCORDING TO THE STANDARD SPECIFICATIONS FOR PUBLIC WORKS CONSTRUCTION AND COUNTY SPECIFICATIONS FOR THE CONSTRUCTION OF SANITARY SEWERS DATED APRIL, 7, 1970, AND SHALL BE PROSECUTED UNDER THE SUPERVISION OF THE COUNTY ENGINEER.
 BEFORE WORK CAN BE STARTED, THE CONTRACTOR MUST OBTAIN A PERMIT TO EXCAVATE IN COUNTY STREETS FROM THE L.A. COUNTY ROAD DEPT., DISTRICT OFFICE NO. 11-570 AND PAY A FEE TO THE COUNTY ENGINEER, ROOM 308, COUNTY ENGINEERING BUILDING, 118 WEST SECOND STREET OR IN ORIGINAL OFFICE, SUFFICIENT TO COVER THE COST OF CONSTRUCTION INSPECTION AND RECORD PLANS.
 APPROVAL OF THE PLAN BY THE COUNTY OF LOS ANGELES DOES NOT CONSTITUTE A REPRESENTATION AS TO THE ACCURACY OF THE LOCATION OF OR THE EXISTENCE OR NON-EXISTENCE OF ANY UNDERGROUND UTILITY PIPE, OR STRUCTURE WITHIN THE LIMITS OF THE PROJECT THE NOTE APPLIES TO ALL PAGES.
 IF WORK IS TO BE DONE IN A STATE HIGHWAY, A PERMIT MUST BE OBTAINED FROM THE STATE OF CALIFORNIA, DIVISION OF HIGHWAYS, 120 SOUTH BRIDGE STREET, LOS ANGELES, CALIFORNIA.

COUNTY OF LOS ANGELES, CALIFORNIA
 JOHN A. LAMBE, COUNTY ENGINEER J. D. PARKHURST, CHIEF ENGINEER
 CO. SAN DIST. NO. 8.2
 APPROVED BY *[Signature]* 11-570 APPROVED BY *[Signature]*
 REGIONAL ENGINEER (DATE) OFFICE ENGINEER (DATE)
 CHECKED BY *[Signature]* 11-E-70
 REG. C. E. NO. 14390

42326
 J.N. 0250.02

