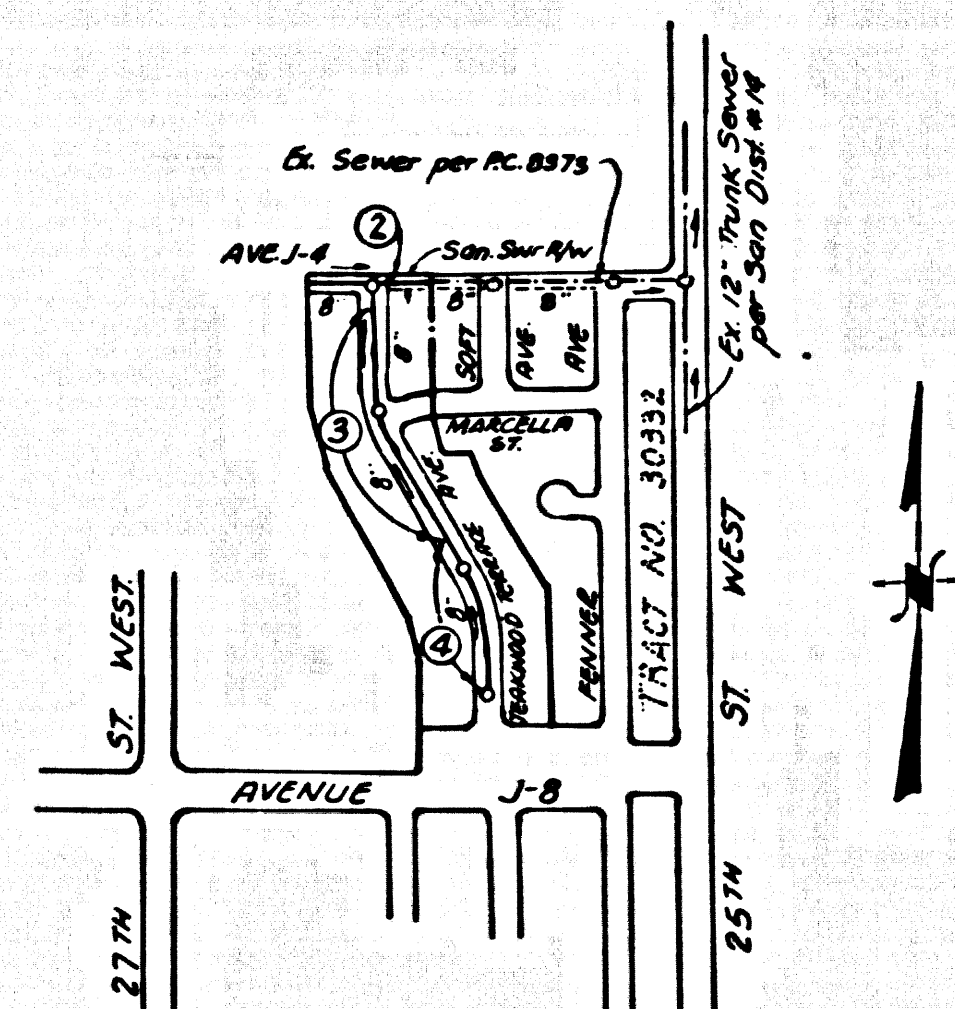


B.M. BL-721 ELEV. 2388.331
 LET. CONC. DRIVE NEAR CONC. BLOCK
 POST 1 1/2' S & 1/2' W OF S 263' W &
 25' W ST. W. MKD. D.M.
 LANCASTER, QUAD. 19 65



INDEX MAP
 TRACT NO 28008
 P.C. 8516
 SCALE: 1/2" = 600'

ISSUE NO PERMITS UNTIL
 P.C. 8373 IS ACCEPTED FOR
 PUBLIC USE.

COLLECT CHARGES
 AS INDICATED

LANCASTER BLDG. DIST. NO. 8

- NOTE:
- HOUSE LATERALS TO BE CONSTRUCTED WITH INVERTS AT PROPERTY LINE 4 FEET BELOW CURB GRADE (8" V.C.P. 18" DIA.).
 - PROVIDE STAKES ON THE PROPERTY LINE OR PROPERTY LINES PRODUCED AT RIGHT ANGLES TO THE SEWER LINE AT THE CENTER LINE OF EACH MANHOLE.
 - NO REPRESENTATIVE OF THE COUNTY ENGINEER WILL SURVEY OR LAY OUT ANY PORTION OF THE WORK.
 - THE PRIVATE ENGINEER SHALL FURNISH THE COUNTY ENGINEER WITH GRADE SHEETS AND STATIONING FOR ALL HOUSE LATERALS AND "T" OR "Y" BRANCHES AND SHALL PROVIDE STAKES FOR THEM AT THEIR PROPER LOCATIONS WITH STATIONING PLAINLY MARKED. ALL HOUSE LATERALS SHALL BE CONSTRUCTED IN A STRAIGHT ALIGNMENT AT RIGHT ANGLES FROM THE MAIN LINE SEWER EXCEPT AS SHOWN ON THE PLANS. HOUSE LATERALS SHALL BE CONSTRUCTED WITH 8" V.C.P. 18" DIA. UNLESS OTHERWISE SPECIFIED. ANY CHANGE IN ALIGNMENT SHALL BE REQUESTED BY WRITING BY THE PRIVATE ENGINEER.
 - THE PRIVATE ENGINEER SHALL FURNISH THE HOUSE LATERAL BATH AT THE PROPERTY LINE BELOW THE TOP OF CURB ELEVATION FOR EACH HOUSE LATERAL ON THE GRADE SHEET.
 - NO REVISIONS SHALL BE MADE IN THESE PLANS WITHOUT THE APPROVAL OF THE COUNTY ENGINEER.
 - THE CONTRACTOR SHALL NOTIFY THE CONSTRUCTION DIVISION BY TELEPHONE, MAINSON 5-4747, EXT. 8158, AT LEAST TWENTY-FOUR HOURS BEFORE STARTING ANY WORK UNDER THIS CONTRACT.
 - ALL STRUCTURES SHALL BE EITHER BRICK MANHOLES PER S-2 OR PRECAST CONCRETE MANHOLES PER S-26.
 - "T" OR "Y" BRANCHES MAY BE USED FOR CONNECTIONS TO MAINTAIN SEWER DRAINAGE.
 - MANHOLE FRAMES SHALL BE EITHER 18" DIA. OR 24" DIA. BRICK OR PRECAST CONCRETE MANHOLES PER S-26.
 - USE EXTRA STRENGTH PIPE, ALL PIPE IS STANDARD DEPTH EXCEPT AS NOTED.
 - WITHIN CLEAR PIPE JOINTS SHALL BE TYPE "T", "Y", OR "X" PER STANDARD SPECIFICATIONS SECTION 806.2.
 - IF A POWER POLE IS WITHIN THREE FEET OF THE SEWER THE SEWER SHALL BE ENCASED, PER S-26, THIRD PART ON EACH SIDE FROM THE POINT OF INTERFERENCE.
 - IF DURING THE COURSE OF CONSTRUCTION IT IS DETERMINED THAT THERE IS LESS THAN FOUR FEET OF COVER OVER THE TOP OF A MAIN LINE OR HOUSE LATERAL V.C.P. SEWER WHICH IS NOT INDICATED ON THE PLANS, THE PIPE SHALL BE ENCASED PER S-26, UNLESS OTHERWISE APPROVED BY THE COUNTY ENGINEER.
 - REINFORCE ALL TRENCHES WITHIN PAVING AREAS TO MEET L.A. COUNTY ROAD DEPT. OR CALIFORNIA STATE HIGHWAY REQUIREMENTS IN ACCORDANCE WITH PERMITS.
 - SEWERS TO BE TESTED FOR LEAKAGE PER SECTION 806.3.2.7 OF THE STANDARD SPECIFICATIONS.
 - REFER TO SECTION 7.08.1.1 OF THE STANDARD SPECIFICATIONS, REGARDING SAFETY CONES.
 - ALL JOINTS BETWEEN CAST IRON PIPE AND WITHIN CLEAR PIPE SHALL BE MADE WITH A RUBBER GASKET JOINT, TYPE "C" OR "D", WITHIN MANHOLES IF NECESSARY PER STANDARD SPECIFICATIONS, SECTION 806.2.

THE FOLLOWING LATEST REVISED STANDARD PLANS ON FILE IN THE OFFICE OF THE COUNTY ENGINEER SHALL APPLY IN THE CONSTRUCTION OF THIS PROJECT:

10300	\$1
MINIMUM PUBLIC SAFETY REQUIREMENTS	\$2
BRICK MANHOLE	\$3
NON-REINFORCED PRECAST CONCRETE MANHOLE	\$4
MANHOLE FRAME AND COVER	\$5
STANDARD MANHOLE STEP	\$6
RECORD FOR SEWER PIPE	\$7
CHASING AND ENCASEMENT	\$8
WYE ON THE SUPPORT	\$9
ALLOWABLE TRENCH WIDTH	\$10

County Sanitation Districts shall be notified prior to the following so that required inspection can be made (Section 837-1028 in S.C.S.D. 80097).

Acceptance of the project.

No connections for the disposal of industrial wastes shall be made to sewers shown on these drawings without written permission from the Chief Engineer and General Manager of the County Sanitation Districts.

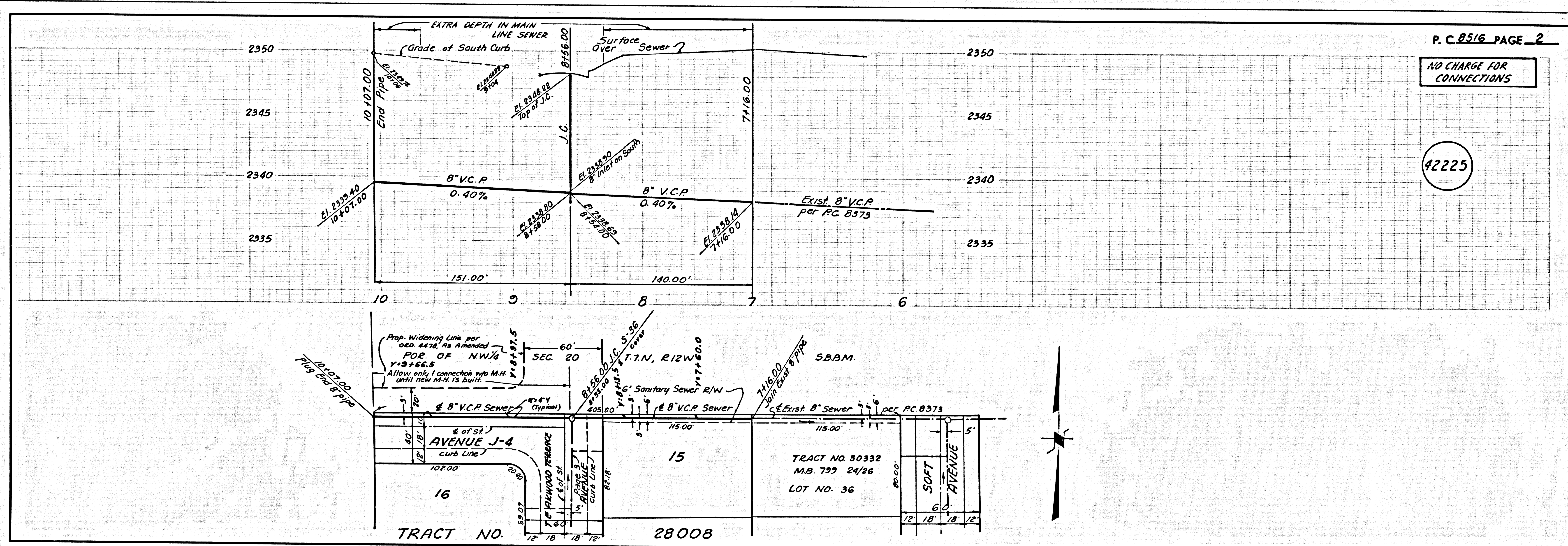
PROFILE, ALIGNMENT AND GRADE OF
SANITARY SEWERS P.C. 8516
 CONSTRUCTED IN PAGE 1
 TRACT NO. 28008
 PRIVATE CONTRACT NO. 8516
 W.S. 71
 2 SHEETS; 4 PAGES
 SCALE: VERT. 1" = 4' HORIZ. 1" = 40' JUNE, 1970
 PREPARED IN THE OFFICES OF
 SCHOORA ENGINEERS
 13608 VICTORY BOULEVARD
 VAN NUYS, CALIFORNIA
 BY: *[Signature]*
 REG. C. E. NO. 12255

NOTE:
 GRADES TO WHICH THIS IMPROVEMENT IS TO BE CONSTRUCTED ARE SHOWN ON PLANS AND PROFILES. GRADE POINTS FOR TOP OF CURB, CENTER LINE OF STREETS, OR CENTER LINE OF ALLEYS ARE SHOWN BY CIRCLES ON PROFILES AT ALL POINTS BETWEEN BENCHMARK POINTS. THE GRADE SHALL BE ESTABLISHED SO AS TO CONFORM TO A STRAIGHT LINE BEARER BETWEEN SAID BENCHMARK POINTS. ELEVATIONS ARE IN FEET ABOVE U.S.C. & G.S. MEAN LEVEL DATUM OF 1929. 1750 FOOTING AND UP ABOVE WIDE SHALL BE CONSTRUCTED ACCORDING TO THE STANDARD SPECIFICATIONS FOR PUBLIC WORKS CONSTRUCTION. A SPECIAL PROVISION FOR THE CONSTRUCTION OF SANITARY SEWERS DATED APRIL 1, 1970 AS REVISION, AND SHALL BE PROCURED BY THE PRIVATE ENGINEER AT HIS OWNERS RISK AND COST.
 APPROVAL OF THIS PLAN BY THE COUNTY OF LOS ANGELES DOES NOT CONSTITUTE A REPRESENTATION AS TO THE ACCURACY OF THE LOCATION OF OR THE EXISTENCE OR NON-EXISTENCE OF ANY UNDERGROUND UTILITY PIPE, OR STRUCTURE WITHIN THE LIMITS OF THE PROJECT. THIS NOTE APPLIES TO ALL PAGES.
 IF WORK IS TO BE DONE IN A STATE HIGHWAY, A PERMIT MUST BE OBTAINED FROM THE STATE OF CALIFORNIA, DIVISION OF HIGHWAYS, 138 SOUTH SPRING STREET, LOS ANGELES, CALIFORNIA.

COUNTY OF LOS ANGELES, CALIFORNIA
 JOHN A. LAMBE, COUNTY ENGINEER J. D. PARKHURST, CHIEF ENGINEER
 APPROVED BY *[Signature]* 10/5/70 APPROVED BY *[Signature]*
 REGIONAL ENGINEER DATE OFFICE ENGINEER

CHECKED BY *[Signature]* 10/5/70
 REG. C. E. NO. 16742 DATE

J.N. 0250.02



P.C. 8516 PAGE 2

NO CHARGE FOR CONNECTIONS

42225

