

B.M. BY 7556 ELEV. 928.448
 ROOM TAG CTR CB NR BCR LEFT TURN
 POCKET TO GOLF COURSE 6 FT. N + 80 FT.
 W CL INT AGOURA RD + LINDERO CANYON RD
 MALIBU QUAD. 19 65.

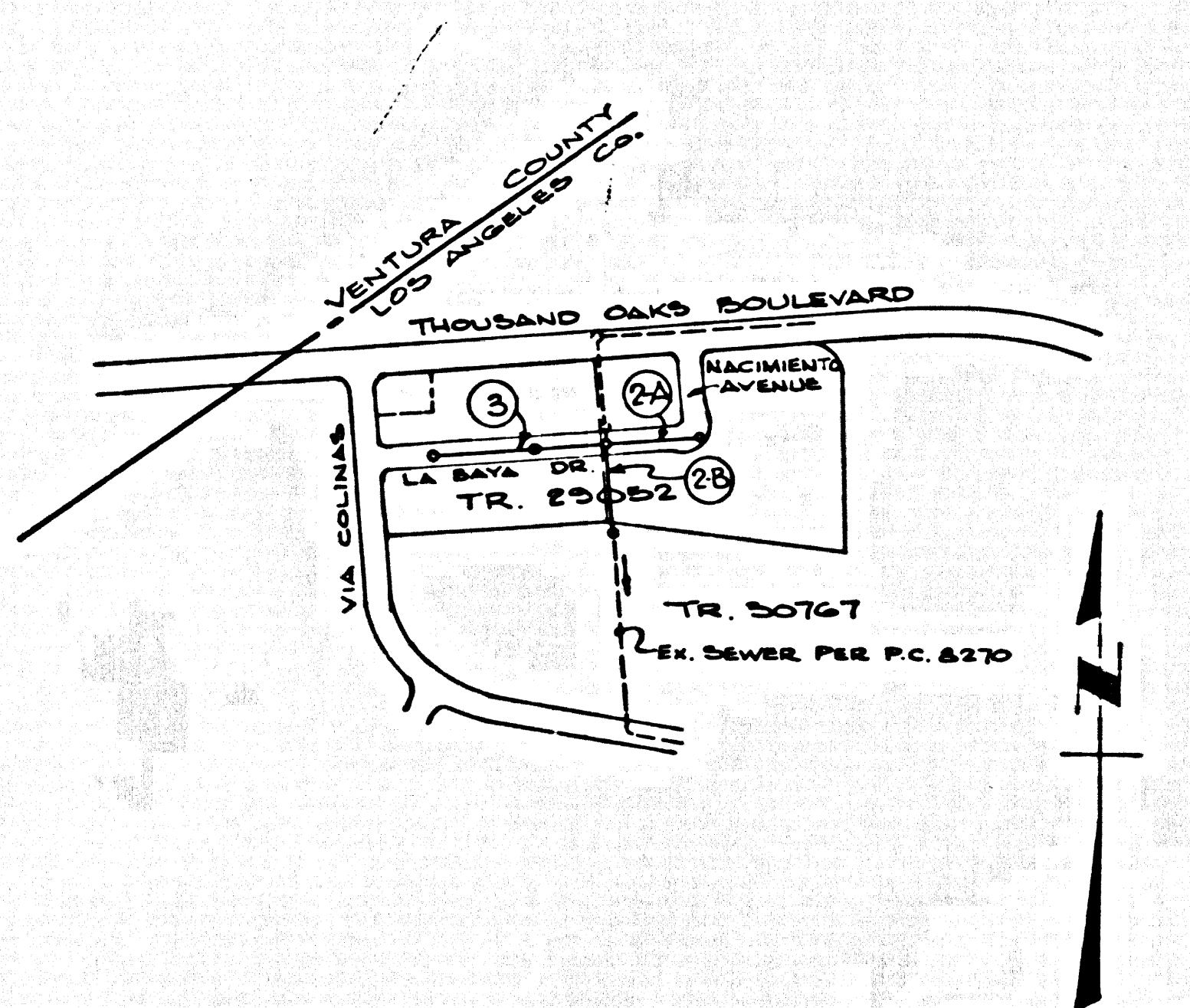
THE ACCURACY OF THE LOCATION OF OR THE EXISTENCE OR NON EXISTENCE OF ANY
 UTILITY PIPE OR STRUCTURE WITHIN THE LIMITS OF THIS PROJECT DOES NOT CONSTITUTE
 RESPONSIBILITY BY THE ENGINEER.

CALABASAS BLDG. DIST. NO. 91

PROFILE, ALIGNMENT AND GRADE OF
 SANITARY SEWERS P.C. 8519
 TO BE CONSTRUCTED IN PAGE 1

TRACT NO. 29052
 PRIVATE CONTRACT NO. 8519

W.S. 95
 2 SHEETS; 3 PAGES
 SCALE: HORIZ. 1" = 40' JULY 1970
 PREPARED IN THE OFFICES OF
 MCINTIRE & QUIROS INC.
 32123 W. LINDERO CANYON ROAD WESTLAKE VILLAGE, CALIF.
 GEORGE JORGENSEN REG. C. E. NO. 15810



INDEX MAP
 SCALE: 1" = 1000'
 P.C. 8519

- NOTES:
- HOUSE LATERALS TO BE CONSTRUCTED WITH INVERTS AT PROPERTY LINE 4 FEET BELOW CURB GRADE EXCEPT AS NOTED.
 - PROVIDE BRACES ON THE PROPERTY LINE OR PROPERTY LINES PRODUCED AT RIGHT ANGLES TO THE SEWER LINE AT THE CENTER LINE OF EACH MANHOLE.
 - NO REPRESENTATIVE OF THE COUNTY ENGINEER WILL SURVEY OR LAY OUT ANY PORTION OF THE WORK.
 - THE PRIVATE ENGINEER SHALL FURNISH THE COUNTY ENGINEER WITH GRADE SHEETS AND STATIONING FOR ALL HOUSE LATERALS AND "T" OR "T" BRANCHES AND SHALL PROVIDE STAKES FOR THEM AT THEIR PROPER LOCATIONS WITH STATIONING PLAINLY MARKED. ALL HOUSE LATERALS SHALL BE CONSTRUCTED IN A STRAIGHT ALIGNMENT AT RIGHT ANGLES FROM THE MAIN LINE SEWER EXCEPT AS SHOWN ON THE PLANS. HOUSE LATERALS FROM CHIMNEYS SHALL NOT HAVE AN ANGLE OF LESS THAN 45° WITH THE MAIN LINE SEWER. ANY CHANGE IN ALIGNMENT SHALL BE REQUESTED BY THE PRIVATE ENGINEER.
 - THE PRIVATE ENGINEER SHALL FURNISH THE HOUSE LATERAL SUPPLY AT THE PROPERTY LINE BELOW THE TOP OF CURB ELEVATION FOR EACH HOUSE LATERAL ON THE GRADE SHEET.
 - NO REVISIONS SHALL BE MADE IN THESE PLANS WITHOUT THE APPROVAL OF THE COUNTY ENGINEER.
 - THE CONTRACTOR SHALL NOTIFY THE CONSTRUCTION DIVISION BY TELEPHONE, MADISON 9-0747, EXT. 8159, AT LEAST TWENTY-FOUR HOURS BEFORE STARTING ANY WORK UNDER THIS CONTRACT.
 - ALL STRUCTURES SHALL BE EITHER BRICK MANHOLES PER 8-3 OR PRECAST CONCRETE MANHOLES PER 1-36 EXCEPT AS NOTED.
 - "T" OR "T" BRANCHES MAY BE USED FOR CONNECTIONS TO MAINLINE SEWERS EXCEPT AS NOTED.
 - MANHOLE TOPS IN UNIMPROVED AREAS OF WAYS TO BE 2 1/2 INCHES ABOVE FINISHED GRADE.
 - USE EXTRA STRENGTH PIPE. ALL PIPE IS STANDARD UNLESS NOTED OTHERWISE.
 - VITRIFIED CLAY PIPE SHALL BE TYPE "T", "T", OR "T" PER STANDARD SPECIFICATIONS SECTION 308.2.
 - IF A POWER POLE IS WITHIN THREE FEET OF THE SEWER, THE SEWER SHALL BE ENCASED, PER 8-25, TWO FEET ON EACH SIDE FROM THE POINT OF INTERFERENCE.
 - IF DURING THE COURSE OF CONSTRUCTION IT IS DETERMINED THAT THERE IS LESS THAN FOUR FEET OF COVER OVER THE TOP OF A MAIN LINE OR HOUSE LATERAL V.C.P. SEWER WHICH IS NOT INDICATED ON THE PLANS, THE PIPE SHALL BE ENCASED PER 8-25 UNLESS OTHERWISE APPROVED BY THE COUNTY ENGINEER.
 - RESURFACE ALL TRENCHES WITHIN PAVED AREAS TO MEET L.A. COUNTY ROAD DEPT. OR CALIFORNIA STATE HIGHWAY REQUIREMENTS IN ACCORDANCE WITH PERMITS.
 - REFER TO SECTION 308.3.3 OF THE STANDARD SPECIFICATIONS, REGARDING SAFETY OBSTACLES.
 - REFER TO SECTION 2.18.1.1 OF THE STANDARD SPECIFICATIONS, REGARDING SAFETY OBSTACLES.
 - ALL JOINTS BETWEEN CAST IRON PIPE AND VITRIFIED CLAY PIPE SHALL BE MADE WITH A RUBBER SLEEVE JOINT, TYPE "C" OR "B", WITHIN FINISHING IF NECESSARY PER STANDARD SPECIFICATIONS, SECTION 308.3.

THE FOLLOWING LISTED REVISIONS SHALL APPLY TO THE PLANS IN THE OFFICE OF THE COUNTY ENGINEER SHALL APPLY IN THE CONSTRUCTION OF THIS PROJECT.

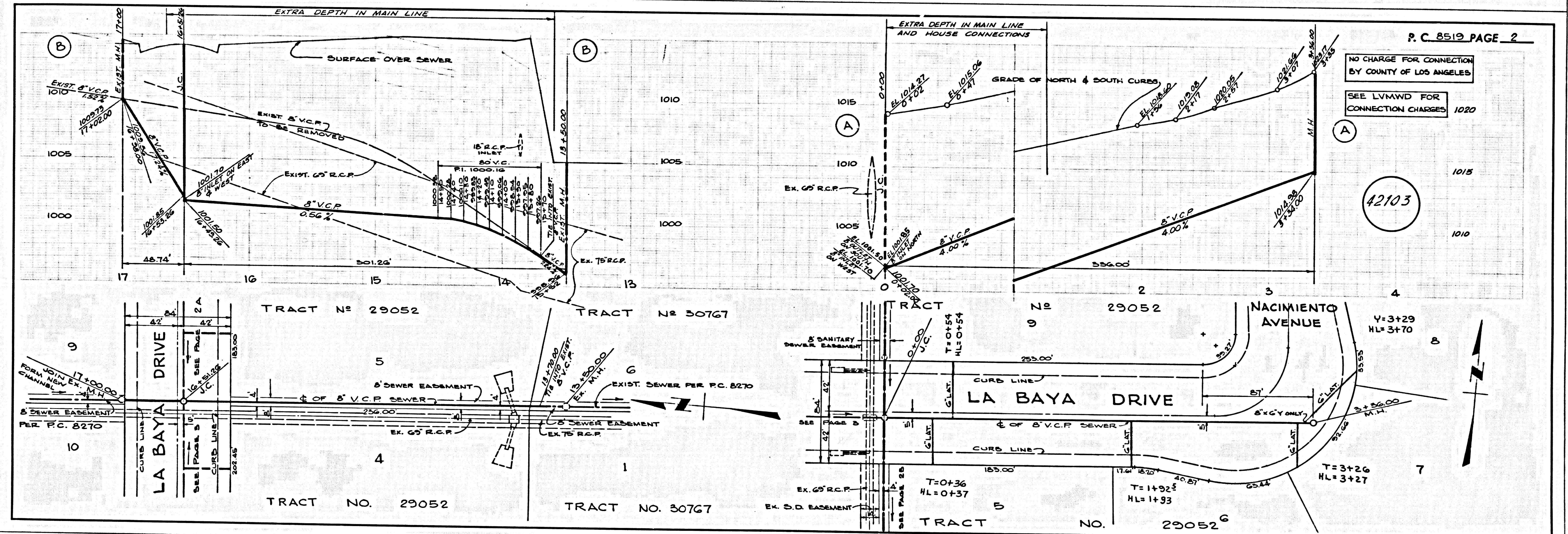
LEGEND	8-1
MINIMUM PUBLIC SAFETY REQUIREMENTS	8-2
BRICK MANHOLE	8-3
NON-REINFORCED PRECAST CONCRETE MANHOLE	8-36
MANHOLE FRAME AND COVER	8-36
STANDARD MANHOLE SIZE	8-17
STAKING FOR SEWER PIPE	8-21
CHANGING LANE ENCROACHMENT	8-26
WYS OR THE SUPPORT	8-26
ALLOWABLE TRENCH WIDTHS	8-28

COLLECT CHARGES
 AS INDICATED

NOTE:
 GRADES TO WHICH THE IMPROVEMENTS ARE TO BE CONSTRUCTED ARE SHOWN ON PLANS AND PROFILE. GRADE POINTS FOR TOP OF CURBS, CENTER LINE OF STREETS, OR CENTER LINE OF ALLEYS ARE SHOWN BY CIRCLES ON PROFILES. IF ALL POINTS BETWEEN BEARING POINTS THE GRADE SHALL BE ESTABLISHED SO AS TO CONFORM TO A STRAIGHT LINE DRAWN BETWEEN SAID BEARING POINTS. REVISIONS ARE IN FEET ABOVE U.S.C. & G.S. SEA LEVEL UNLESS OTHERWISE NOTED.
 WORK SHALL BE CONSTRUCTED ACCORDING TO THE STANDARD SPECIFICATIONS FOR PUBLIC WORKS CONSTRUCTION AND SPECIAL PROVISIONS FOR THE CONSTRUCTION OF SANITARY SEWERS DATED APRIL 2, 1970 AS REVISED, AND SHALL BE PROTECTED ONLY BY THE PRESENCE OF THE COUNTY ENGINEER.
 BEFORE WORK CAN BE STARTED, THE CONTRACTOR MUST OBTAIN A PERMIT TO EXCAVATE IN COUNTY STREETS FROM THE L. A. COUNTY ROAD DEPT., DISTRICT OFFICE NO. 2, AND PAY A FEE TO THE COUNTY ENGINEER, ROOM 284, COUNTY ENGINEERING BUILDING, 108 WEST SECOND STREET OR MALIBU REGIONAL OFFICE, SUPPLEMENT TO COVER THE COST OF CONSTRUCTION INSPECTION AND RECORD PLANS.
 APPROVAL OF THIS PLAN BY THE COUNTY OF LOS ANGELES DOES NOT CONSTITUTE A REPRESENTATION AS TO THE ACCURACY OF THE LOCATION OF OR THE EXISTENCE OR NON-EXISTENCE OF ANY UNDERGROUND UTILITY PIPE, OR STRUCTURE WITHIN THE LIMITS OF THIS PROJECT. THIS NOTE APPLIES TO ALL PAGES.
 IF WORK IS TO BE DONE IN A STATE HIGHWAY, A PERMIT MUST BE OBTAINED FROM THE STATE OF CALIFORNIA, DIVISION OF HIGHWAYS, 120 SOUTH SPRING STREET, LOS ANGELES, CALIFORNIA.

COUNTY OF LOS ANGELES, CALIFORNIA
 LAS VIRGENES MUNICIPAL WATER DISTRICT
 JOHN A. LAMBIE, COUNTY ENGINEER
 APPROVED BY *James H. Miller* 10/21/70 MALIBU REGIONAL ENGINEER DATE
 APPROVED BY *John Stokes* CHIEF ENGR. AND GENERAL MANAGER DATE
 CHECKED BY *Walter G. Gorman* 10/21/70 DATE
 REG. C.E. NO. 17723

42102



P.C. 8519 PAGE 2
 NO CHARGE FOR CONNECTION
 BY COUNTY OF LOS ANGELES
 SEE LVMWD FOR
 CONNECTION CHARGES 1020

42103

