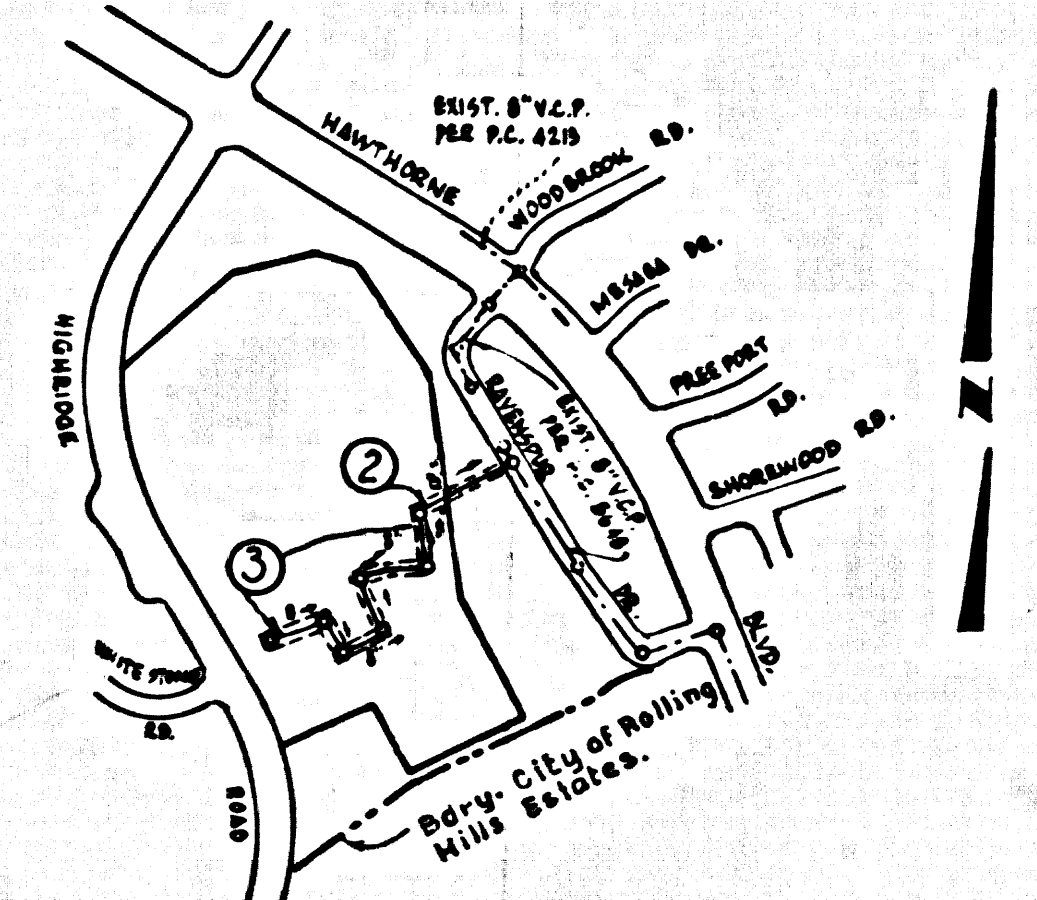


B.M. 4575 ELEV. 1091.61
 L. 9 S.P.C. IN TYPE 'D' ISLAND TRANSITION CO.
 41 FT. 2 IN. CUL. MANHOLES BLVD. 49 FT. 2
 E. GAYLOR BLVD.
 PALOS VERDES QUAD. 19 95



INDEX MAP
 SCALE: 1" = 100'

REVISIONS
 REVISED GRADE AND ALIGNMENT ON
 SHEETS 2A, 2B, AND 3A
 REVISED BY: *C.M. Leonard* 7-15-71
C.M. Leonard 8-18-71
 APPROVED BY: *Samuel H. Udey* 9/14/71

THE FOLLOWING LATEST REVISED STANDARD
 PLANS ON FILE IN THE OFFICE OF THE COUNTY
 ENGINEER SHALL APPLY IN THE CONSTRUCTION
 OF THIS PROJECT.

LEGEND	S-1
MINIMUM PUBLIC SAFETY REQUIREMENTS	S-1
8" V.C.P. MANHOLE	S-2
NON-REINFORCED PRECAST CONCRETE MANHOLE	S-3
MANHOLE FRAME AND COVER	S-36
STANDARD MANHOLE STEP	S-17
BEDDING FOR SEWER PIPE	S-21
COILING AND ENCASUREMENT	S-25
WYE OR TE SUPPORT	S-26
ALLOWABLE TRENCH WIDTH	S-33

County Sanitation Districts shall be notified prior to the following so that required inspection can be made (Phone numbers - 638-1161)

No connections for the disposal of industrial wastes shall be made to sewers shown on these drawings without written permission from the Chief Engineer and General Manager of the County Sanitation Districts.

DOUBLE SCALE
LOMITA BLDG. DIST. NO. 12

- NOTE:
1. PROVIDE STAKES ON THE PROPERTY LINE OR PROPERTY LINES PRODUCED AT RIGHT ANGLES TO THE SEWER LINE AT THE CENTER LINE OF EACH MANHOLE.
 2. NO REPRESENTATIVE OF THE COUNTY ENGINEER WILL SURVEY OR LAY OUT ANY PORTION OF THE WORK.
 3. THE PRIVATE ENGINEER SHALL FURNISH THE COUNTY ENGINEER WITH GRADE SHEETS AND STATIONING FOR ALL HOUSE LATERALS AND 7" OR 8" BRANCHES AND SHALL PROVIDE STAKES FOR THEM AT THEIR PROPER LOCATIONS WITH STATIONING PLAINLY MARKED. ALL HOUSE LATERALS SHALL BE CONSTRUCTED IN A STRAIGHT ALIGNMENT AT RIGHT ANGLES FROM THE MAIN LINE SEWER EXCEPT AS SHOWN ON THE PLANS. HOUSE LATERALS FROM CHIMNEYS SHALL NOT HAVE AN ANGLE OF LESS THAN 45° WITH THE MAIN LINE SEWER. ANY CHANGE IN ALIGNMENT SHALL BE REQUESTED BY WRITING BY THE PRIVATE ENGINEER.
 4. THE PRIVATE ENGINEER SHALL FURNISH THE HOUSE LATERAL DEPTH AT THE PROPERTY LINE BELOW THE TOP OF CURB ELEVATION FOR EACH HOUSE LATERAL ON THE GRADE SHEET.
 5. NO REVISIONS SHALL BE MADE IN THESE PLANS WITHOUT THE APPROVAL OF THE COUNTY ENGINEER.
 6. THE CONTRACTOR SHALL NOTIFY THE CONSTRUCTION DIVISION BY TELEPHONE, HARBOR 9-6747, EXT. 8198, AT LEAST TWENTY-FOUR HOURS BEFORE STARTING ANY WORK UNDER THIS CONTRACT.
 7. ALL STRUCTURES SHALL BE SETTING BRICK MANHOLES PER S-3 OR PRECAST MANHOLES PER S-2-S-3 EXCEPT AS NOTED.
 8. "Y" OR "Y" BRANCHES MAY BE USED FOR CONNECTIONS TO MAIN LINE SEWER EXCEPT AS NOTED.
 9. MANHOLES IN UNIMPROVED RIGHTS-OF-WAY TO BE SET INCHES ABOVE FINISHED GRADE.
 10. USE EXTRA EXTERIOR PIPE ALL PIPE IS STANDARD UNLESS NOTED OTHERWISE.
 11. VITRIFIED CLAY PIPE JOINTS SHALL BE TYPE "Y" IN THE STD. S.P.C.'S SECTION 548-1.
 12. IF A POWER POLE IS WITHIN THREE FEET OF THE SEWER, THE SEWER SHALL BE ENCASED PER S-25. TWO FEET ON EACH SIDE FROM THE POINT OF INTERFERENCE.
 13. IF DURING THE COURSE OF CONSTRUCTION IT IS DETERMINED THAT THERE IS LESS THAN FOUR FEET OF COVER OVER THE TOP OF A MAIN LINE OR HOUSE LATERAL V.C.P. SEWER WHICH IS NOT INDICATED ON THE PLANS, THE PIPE SHALL BE ENCASED PER S-25, UNLESS OTHERWISE APPROVED BY THE COUNTY ENGINEER.
 14. HOUSE LATERALS TO BE CONSTRUCTED WITHIN PROPERTY LINE & FEET BELOW CURB GRADE EXCEPT AS NOTED.
 15. RESURFACE ALL TRENCHES WITHIN PAVED AREAS TO MEET L.A. COUNTY ROAD DEPT. OR CALIFORNIA STATE HIGHWAY REQUIREMENTS IN ACCORDANCE WITH PERMITS.
 16. BIDDING TO BE TIED TO PERMITS FOR EXCESS PER SECTION 506-2, 2, 7 OF STD. SPEC'S.
 17. REFER TO SECTION 7.04.4.1 OF THE STANDARD SPECIFICATIONS, STANDARD SAFETY DEVICES.
 18. SPECIAL BACKFILL IN DESIGNATED AREAS:
 - (a) BACKFILL TRENCH & REPLACE OTHER SOFTEN REMOVED AND AS TO AVOID THE NATURAL OR CULTURED SOILS AND SCALPS SHOWN ON THE GEOTECHNICAL PLAN APPROVED FOR THE SITE BY THE BUILDING & SAFETY DIVISION.
 - (b) ALL BACKFILL SHALL BE COMPACTED TO A MINIMUM OF 90% OF MAXIMUM DENSITY PER A.S.T.M. STANDARD METHOD OF TEST D 1557 AT MODIFIED, ACCEPTABLE CERTIFICATION, OF SUCH CONSTRUCTION SHALL BE SUBMITTED TO THE CONSTRUCTION DIVISION.

ISSUE NO PERMITS UNTIL
 R/W IS RECORDED

**COLLECT CHARGES
 AS INDICATED**

NOTICE TO CONTRACTOR

The existence and location of any underground utility pipes or structures shown on these plans are obtained by a search of the available records to the best of my knowledge there are no existing utilities shown as shown on these plans. The contractor is required to take due precautionary measures to protect the utility lines shown and any other lines not of record or not shown on these plans.

C.M. Leonard
 8-18-71

PROFILE ALIGNMENT AND GRADE OF
SANITARY SEWERS PAGE 1
 TO BE CONSTRUCTED IN

R/W EAST OF HIGHWAY

PRIVATE CONTRACT NO. 8521

W.S. 27
 2 SHEETS, 3 PAGES

SCALE: HORIZ. 1" = 40' AUG. 1970

PREPARED IN THE OFFICES OF

LANCO ENGINEERING

By: *C.M. Leonard*

REG. C.E. NO. 15167

FOR LEGEND SEE PLAN NO. S-1

42776

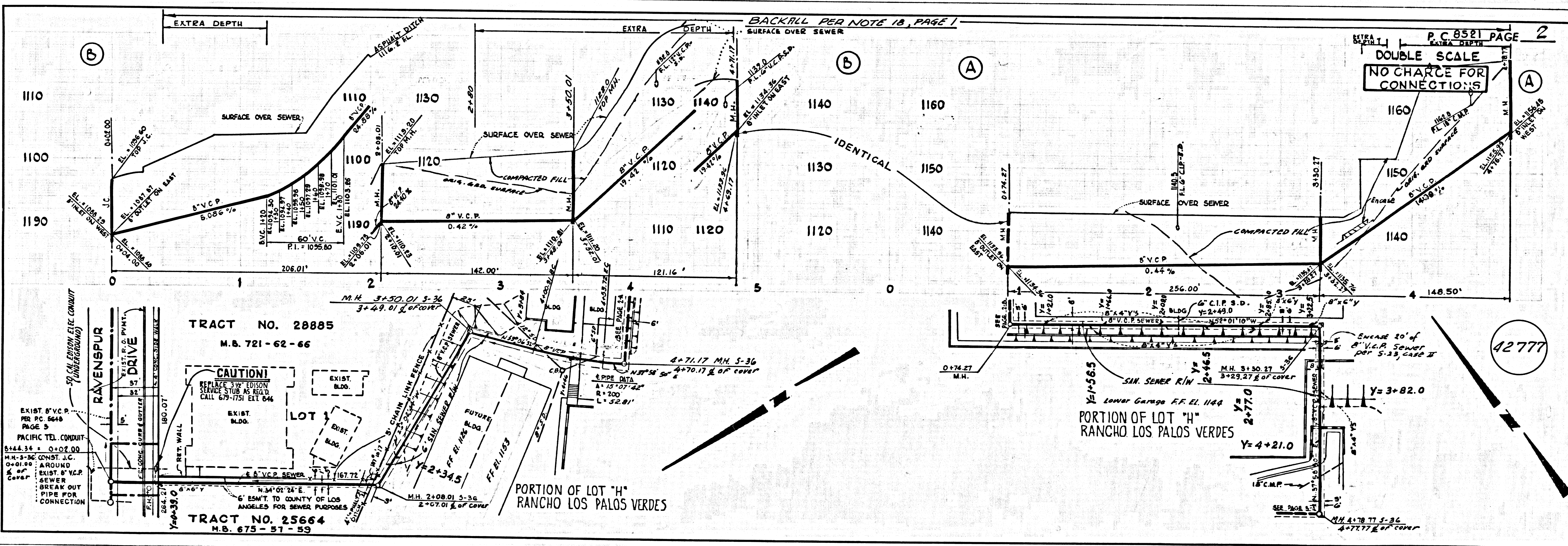
GRADES TO WHICH THIS IMPROVEMENT IS TO BE CONSTRUCTED ARE SHOWN ON PLANS AND PROFILES. GRADE POINTS FOR TOP OF CURBS, CENTER LINE OF STREETS, OR CENTER LINE OF ALLEYS ARE SHOWN BY CIRCLES ON PROFILES. AT ALL POINTS BETWEEN DESIGNATED ELEVATIONS ARE IN FEET ABOVE U.S.C. & G.S. SEA LEVEL DATUM OF 1929. THIS DRAWING AND THE DATA HEREON ARE HEREBY MADE A PART OF THE SPECIFICATIONS.

THE CONTRACTOR SHALL BE RESPONSIBLE FOR OBTAINING ALL NECESSARY PERMITS AND FOR THE PROTECTION OF ALL EXISTING UTILITIES AND STRUCTURES. THE CONTRACTOR SHALL BE RESPONSIBLE FOR THE PROTECTION OF ALL EXISTING UTILITIES AND STRUCTURES. THE CONTRACTOR SHALL BE RESPONSIBLE FOR THE PROTECTION OF ALL EXISTING UTILITIES AND STRUCTURES.

COUNTY OF LOS ANGELES, CALIFORNIA
 JOHN A. LAMBIE, COUNTY ENGINEER J. D. PARKHURST, CHIEF ENGINEER
 APPROVED BY: *Samuel H. Udey* 11-24-70 APPROVED BY: *Samuel H. Udey* 11-24-70
 REGIONAL ENGINEER OFFICE ENGINEER

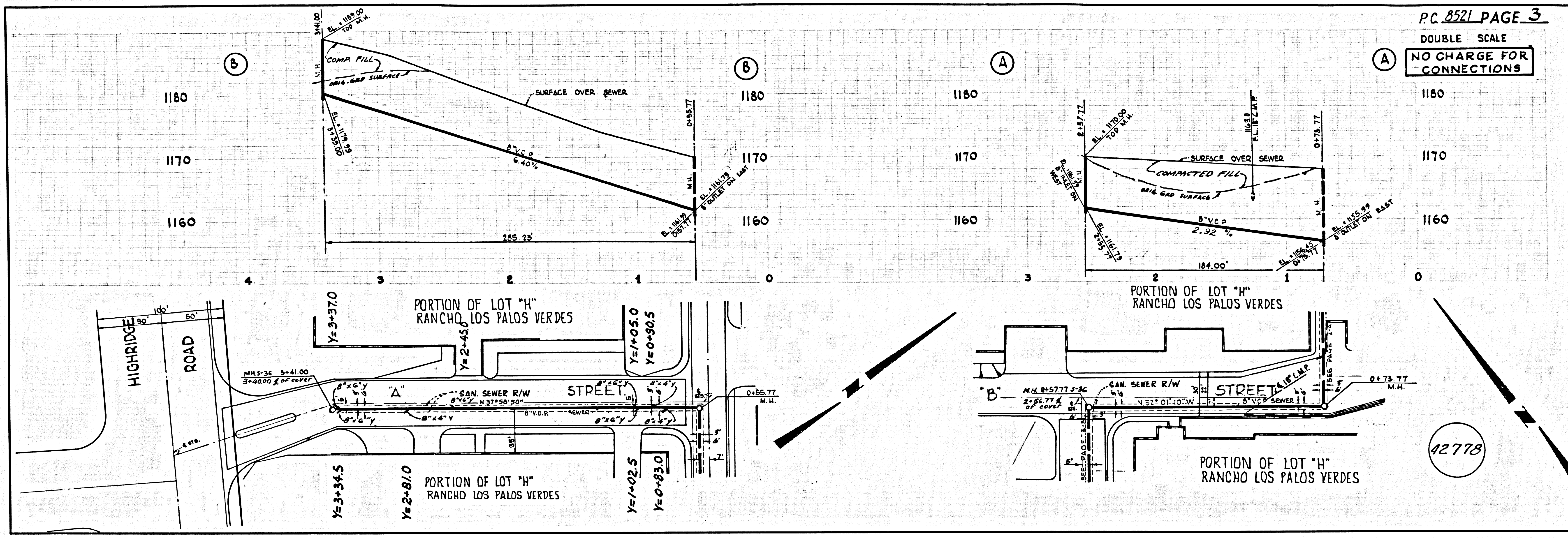
CHECKED BY: *Samuel H. Udey* 11/24/70
 REG. C.E. NO. 106273

J. N. 0370, 65



DOUBLE SCALE

NO CHARGE FOR CONNECTIONS



PC 8521

42778

PAGE