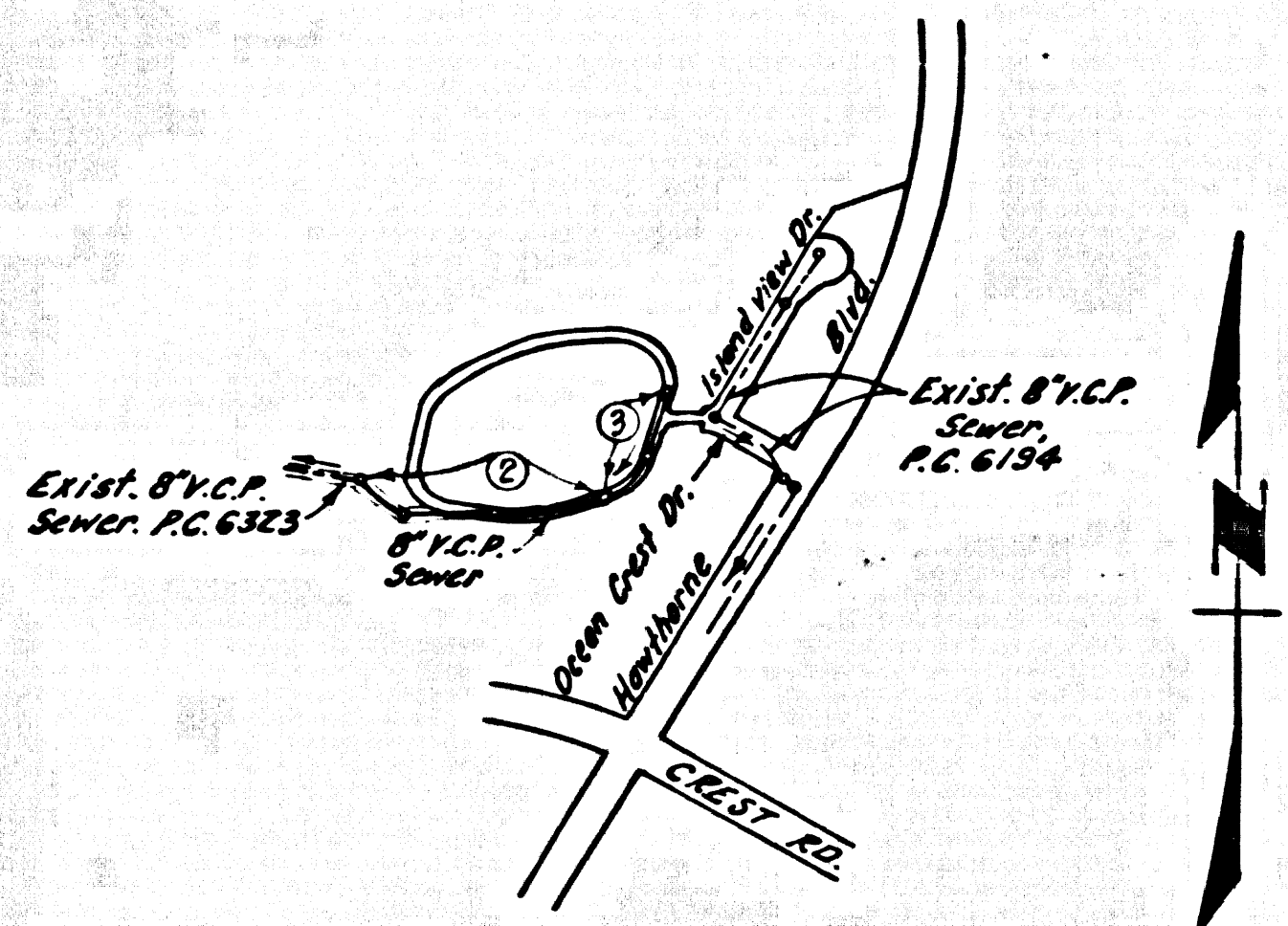


B.M. BY 7328 ELEV. 950.62
 RDBM TAG COR. CONC. SIAS TELE. CO
 BOX 41 FT WLY. E. MANTHORPE
 BLDG. & 400 FT. N.W. CORNER RD.
 PALOS VERDES QUAD. 19 65



INDEX MAP
 Scale: 1"=600'
 TRACT NO. 29300
 P.C. No. 8522

THE FOLLOWING STANDARD PLANS ON FILE IN THE OFFICE OF THE COUNTY ENGINEER, SHALL APPLY IN THE CONSTRUCTION OF THIS PROJECT:

LEGEND	5-1
MIN. EXCAVATION SAFETY REQUIREMENTS	5-2
BRICK MANHOLE	5-3
NON REINFORCED PRECAST CONCRETE MANHOLE	5-36
MANHOLE FRAME & COVER	5-35
MANHOLE STEP	5-17
BEDDING & SEWER PIPE	5-21
CRADLING ENGAGEMENT	5-23
WYE & TEE SUPPORT	5-26
ALLOWABLE TRENCH WIDTH	5-33

NOTICE TO CONTRACTOR - CONT'D.
 CONTRACTORS ARE CAUTIONED TO OBSERVE THE FOLLOWING RULE IN USING THE GRADE STAKES GIVEN BY THIS OFFICE FOR PUTTING IN LINES, TRENCHES, CONDUITS, ETC. THAT ARE TO BE ON THE SAME RATE OF SLOPE MUST BE USED IN COMMON IN DOUBLE THAT ANY VARIATION OUT OF A PERCENT WITHIN THAT GRADE MAY BE DETECTED, AND IN CASE ANY SUCH DISCREPANCY IS FOUND, THE SAME MUST BE REPORTED, OTHERWISE THIS OFFICE WILL NOT BE RESPONSIBLE FOR ANY ERROR IN THE GRADE OF THE FINISHED WORK.

LOMITA BLDG. DIST. NO. 12

- PROVIDE STAKES ON THE PROPERTY LINE OR PROPERTY LINES PRODUCED AT RIGHT ANGLES TO THE SEWER LINE AT THE CENTER LINE OF EACH MANHOLE.
- NO REPRESENTATIVE OF THE COUNTY ENGINEER WILL SURVEY OR LAY OUT ANY PORTION OF THE WORK.
- THE PRIVATE ENGINEER SHALL FURNISH THE COUNTY ENGINEER WITH GRADE SHEETS AND STATIONING FOR ALL HOUSE LATERALS, "T" AND "Y" BRANCHES AND SHALL PROVIDE STAKES FOR THEM AT THEIR PROPER LOCATIONS WITH STATIONING PLAINLY MARKED. ALL HOUSE LATERALS SHALL BE CONSTRUCTED AT RIGHT ANGLES FROM THE MAIN LINE SEWER EXCEPT AS SHOWN ON THE PLANS. HOUSE LATERALS FROM CHIMNEYS SHALL NOT HAVE AN ANGLE OF LESS THAN 45° WITH THE MAIN LINE SEWER. ANY CHANGE IN ALIGNMENT SHALL BE REQUESTED IN WRITING BY THE PRIVATE ENGINEER.
- THE PRIVATE ENGINEER SHALL FURNISH THE HOUSE LATERAL DEPTH AT THE PROPERTY LINE BELOW THE TOP OF CURB ELEVATION FOR EACH HOUSE LATERAL ON THE GRADE SHEET.
- NO REVISIONS SHALL BE MADE IN THESE PLANS WITHOUT THE APPROVAL OF THE COUNTY ENGINEER.
- THE CONTRACTOR SHALL NOTIFY THE CONSTRUCTION DIVISION BY TELEPHONE, MANHOLE 8-04, EXT. 81581, AT LEAST TWENTY-FOUR HOURS BEFORE STARTING ANY WORK UNDER THIS CONTRACT.
- ALL STRUCTURES SHALL BE EITHER BRICK MANHOLES PER 5-3 OR PRECAST CONCRETE MANHOLES PER 5-36. 600" IN DIAMETER.
- USE STANDARD MANHOLE FRAMES AND COVERS, 8-18, EXCEPT AS NOTED.
- MANHOLE TOPS IN UNIMPROVED RIGHTS-OF-WAY TO BE SIX INCHES ABOVE FINISHED GRADE.
- USE EXTRA STRENGTH PIPE, ALL PIPE IS STANDARD DEPTH EXCEPT AS NOTED.
- FINISHED SURFACE OVER SEWER SHALL BE 12" TO 18" FOR THE 8" V.C.P. 8-64-2.
- IF A POWER POLE IS WITHIN THREE FEET OF THE SEWER, THE SEWER SHALL BE ENCASED, PER 5-22, TWO FEET ON EACH SIDE FROM THE POINT OF INTERFERENCE.
- IF DURING THE COURSE OF CONSTRUCTION IT IS DETERMINED THAT THERE IS LESS THAN FOUR FEET OF COVER OVER THE TOP OF A MAIN LINE OR HOUSE LATERAL V.C.P. SEWER WHICH IS NOT INDICATED ON THE PLANS, THE PIPE SHALL BE ENCASED PER 5-22, UNLESS OTHERWISE APPROVED BY THE COUNTY ENGINEER.
- HOUSE LATERALS TO BE CONSTRUCTED WITHIN SEWER'S 48" PROPERTY LINE AS NOTED.
- RESURFACE ALL TRENCHES WITHIN PAVED AREAS TO MEET L.A. COUNTY ROAD DEPT. OR CALIFORNIA STATE HIGHWAY REQUIREMENTS IN ACCORDANCE WITH PERMITS.
- SEWERS TO BE LINED FOR LEAKAGE PER SECTION 5-1-5-1-7 3RD. ED. 1965.
- UNDER THE SECTION 5-1-5-1-7 OF THE 3RD. SPEC'S REGARDING SAFETY BARRELS.
- ALL UNITS BETWEEN CAST IRON PIPE AND VITRIFIED CLAY PIPE SHALL BE MADE WITH A RUBBER SLEEVE UNIT, TYPE "C" OR "D" (WITH BRASSING IF NECESSARY) PER 5-24. 2ND. ED.

COLLECT CHARGES AS INDICATED

NOTICE TO CONTRACTOR
 The existence and location of any underground utility pipes or structures shown on these plans are obtained by a search of the public records. To the best of my knowledge there are no existing utilities except as shown on these plans. The contractor is required to take due precautionary measures to protect the utility lines shown and any other lines not of record (not shown) on these plans.
George K. Taylor
 1/15/68

PROFILE ALIGNMENT AND GRADE OF **P.C. 8522**
SANITARY SEWERS PAGE 1
 TO BE CONSTRUCTED IN
TRACT No 29300

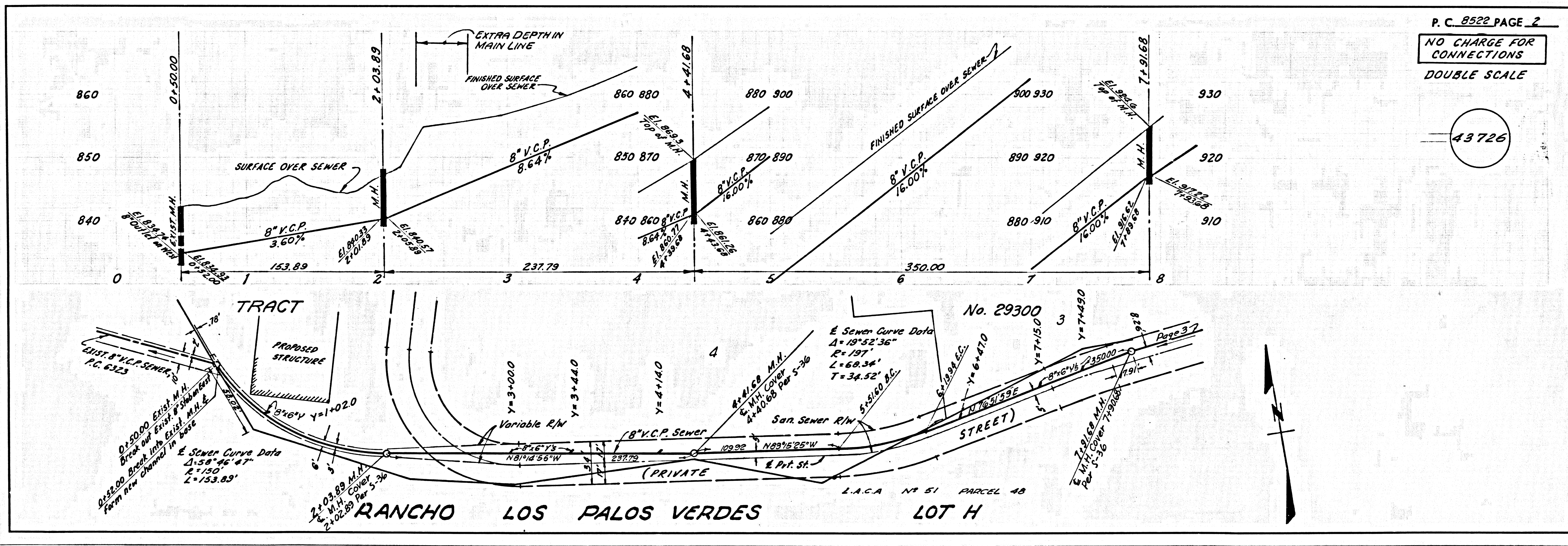
PRIVATE CONTRACT NO. 8522

W.S. 27
 2 SHEETS 3 PAGES
 SCALE: VERT. 1"=8'
 HORIZ. 1"=40'
 SEPT. 1970 **43725**
 PREPARED BY THE OFFICES OF
E.L. PEARSON & ASSOCIATES
George K. Taylor
 REG. C. E. NO. 13360

FOR LEGEND SEE PLAN NO. 5-1
 NOTE:
 GRADES TO WHICH THIS IMPROVEMENT IS TO BE CONSTRUCTED ARE SHOWN ON PLANS AND PROFILE. GRADE POINTS FOR TOP OF CURBS, CENTER LINE OF STREETS, OR CENTER LINE OF ALLEYS ARE SHOWN BY CIRCLES ON PROFILES. AT ALL POINTS BETWEEN DESIGNATED POINTS THE GRADE SHALL BE ESTABLISHED TO BE TO CONFORM TO A STRAIGHT LINE DRAWN BETWEEN SAID DESIGNATED POINTS. ELEVATIONS ARE IN FEET ABOVE U.S.C. & G.S. MEAN SEA LEVEL DATUM OF 1929. INDICATIONS FOR PUBLIC WORKS CONSTRUCTION UNDER SAID DATE OF CONSTRUCTION ACCORDING TO THE STANDARD SPECIFICATIONS FOR PUBLIC WORKS CONSTRUCTION (1970 EDITION) AND COUNTY ENGINEER SPECIAL PROVISIONS FOR THE CONSTRUCTION OF SANITARY SEWERS (1970 EDITION) SHALL BE OBSERVED ONLY ON THE AUTHORITY OF THE COUNTY ENGINEER.
 BEFORE WORK CAN BE STARTED, THE CONTRACTOR MUST OBTAIN A PERMIT TO EXCAVATE IN COUNTY STREETS FROM THE L.A. COUNTY ROAD DEPT., DISTRICT OFFICE NO. 12 AND PAY A FEE TO THE COUNTY ENGINEER, ROOM 303, COUNTY ENGINEERING BUILDING, 900 WEST SECOND STREET OR PALOS VERDES-CORONA VALLEY REGIONAL OFFICE, SUFFICIENT TO COVER THE COST OF CONSTRUCTION INSPECTION AND RECORD PLANS.
 APPROVAL OF THE PLAN BY THE COUNTY OF LOS ANGELES DOES NOT CONSTITUTE A REPRESENTATION AS TO THE ACCURACY OF THE LOCATION OF OR THE EXISTENCE OR NON-EXISTENCE OF ANY UNDERGROUND UTILITY PIPE, OR STRUCTURE WITHIN THE LIMITS OF THIS PROJECT. THIS NOTE APPLIES TO ALL PLANS.
 IF WORK IS TO BE DONE IN A STATE HIGHWAY, A PERMIT MUST BE OBTAINED FROM THE STATE OF CALIFORNIA, DIVISION OF HIGHWAYS, 120 SOUTH SPRING STREET, LOS ANGELES, CALIFORNIA.

COUNTY OF LOS ANGELES, CALIFORNIA
 JOHN A. LAMBIE, COUNTY ENGINEER J. D. PARKHURST, CHIEF ENGINEER
 CO. SAK 991 1107 E.
 APPROVED BY: *Robert M. Williams* 1-14-70 APPROVED BY: *J. D. Parkhurst*
 REGIONAL ENGINEER OFFICE ENGINEER

CHECKED BY: *Carroll Valdez* 1/14/70
 REG. C.E. NO. 1D423



NO CHARGE FOR CONNECTIONS
DOUBLE SCALE

43727

