

B.M. 86 3101 ELEV. 626.797
 RD. BM TAG W. CO. 3 FT. N. B.C.P. AT
 NW COR. COLIMA RD. & PUNTA DEL
 ESTE DR. 75' N & 20' W APPROX. & INT
 OTTERBEIN QUAD. 19 65.

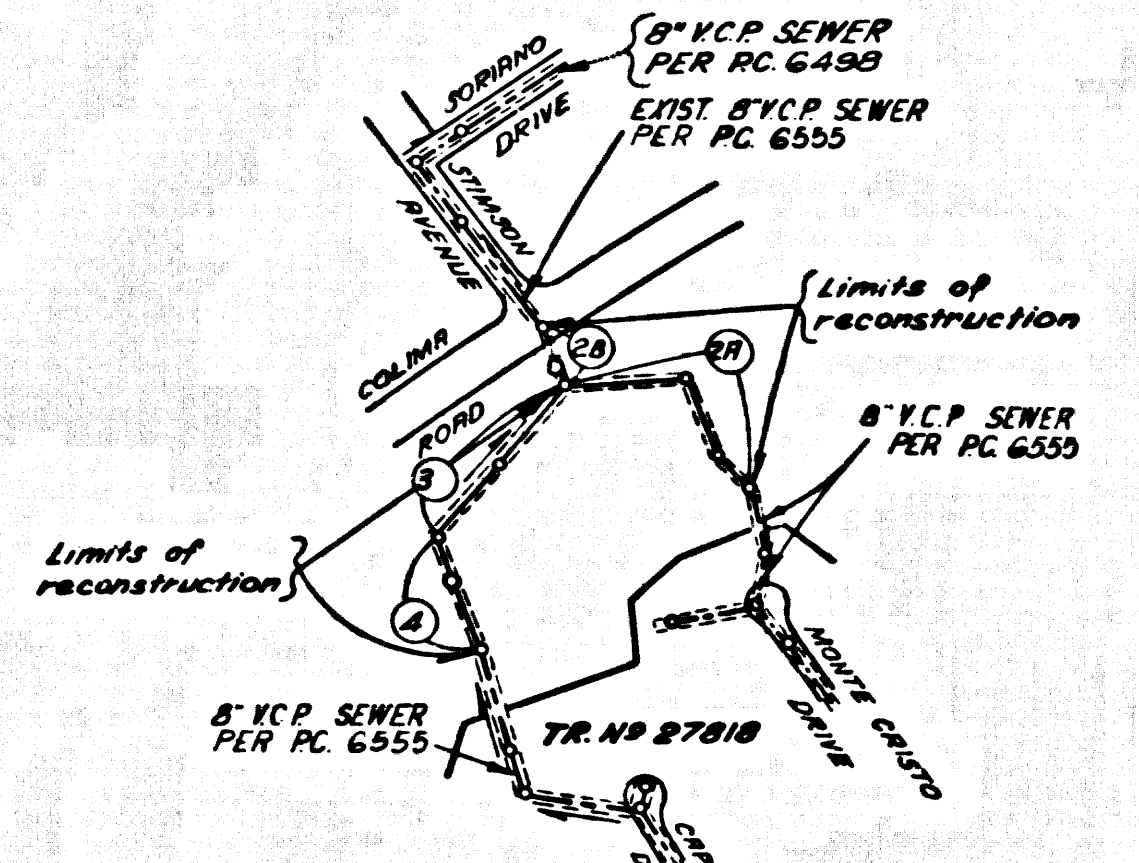
Special Notes:

- Existing sewer between following points to be removed and reconstructed under P.C. 8527 per letter of September 14, 1970 from Calif. Federal Sanitary to County Engineer Sta 6-0462 to Sta 6-0472. P.C. 8527 to Sta 0+00 to Sta 0+100. Sta 0+100 to Sta 0+150. Sta 0+150 to Sta 0+200. Sta 0+200 to Sta 0+250. Sta 0+250 to Sta 0+300. Sta 0+300 to Sta 0+350. Sta 0+350 to Sta 0+400. Sta 0+400 to Sta 0+450. Sta 0+450 to Sta 0+500. Sta 0+500 to Sta 0+550. Sta 0+550 to Sta 0+600. Sta 0+600 to Sta 0+650. Sta 0+650 to Sta 0+700. Sta 0+700 to Sta 0+750. Sta 0+750 to Sta 0+800. Sta 0+800 to Sta 0+850. Sta 0+850 to Sta 0+900. Sta 0+900 to Sta 0+950. Sta 0+950 to Sta 1+000.
- Manhole frames & covers may be salvaged and used again in this project.
- Finished surface to be complete in place prior to construction of this sewer.

County Sanitation Districts shall be notified prior to the following so that they may be made known on these drawings (Phone 337-1022 or 336-3097) acceptance of the project.

No connections for the disposal of industrial wastes shall be made to sewer shown on these drawings without written permission from the Chief Engineer and General Manager of the County Sanitation Districts.

ISSUE NO HOUSE CONNECTION PERMITS OUTFALL ONLY



SCALE 1"=600'
 INDEX MAP
 P.C. 8527

NOTE:
 NUMBERS IN CIRCLES
 DENOTE PAGE NUMBERS.

REVISION

- CHANGED INDEX MAP TO REFLECT NEW SHT. NUMBERING SYSTEM. CHANGED SPECIAL NOTES #11 TO REFLECT NEW LIMITS OF EXIST. SANITARY SEWER VERTICAL ALIGNMENT CHANGE BETWEEN STA. 0+00 & STA. 5+00. M.H. RELOCATED ANCHOR BLOCKS AND ELIMINATED M.H. EXIST. STATION.
- SEWER VERTICAL ALIGNMENT CHANGE BETWEEN STA. 6+00 & STA. 6+40. M.H. AT STA. 7+00. M.H. RELOCATED.
- VOID PLAN & PROFILE.
- CHANGE TO ANCHOR BLOCKS. CHANGED SEWER VERTICAL ALIGNMENT BETWEEN STA. 0+00 & STA. 5+00. RELOCATE M.H. FROM STA. 1+00 TO STA. 1+40. AND RELOCATE ANCHOR BLOCKS.
- CHANGED SEWER VERTICAL ALIGNMENT BETWEEN STA. 5+00 & STA. 5+40. M.H. AT STA. 5+00. M.H. RELOCATED. M.H. AT STA. 5+40. M.H. RELOCATED. M.H. AT STA. 5+40. M.H. RELOCATED.

APPROVED: *[Signature]* DATE: *[Date]*
 R.E.E. NO. 18766

**DOUBLE SCALE VERTICAL
 LA PUENTE BLDG. DIST. NO. 2**

- NOTES:
- HOUSE LATERALS TO BE CONSTRUCTED WITH INVERTS AT PROPERTY LINE 4 FEET BELOW CURB GRADE EXCEPT AS NOTED.
 - PROVIDE STAKES ON THE PROPERTY LINE OR PROPERTY LINES PRODUCED AT RIGHT ANGLES TO THE SEWER LINE AT THE CENTER LINE OF EACH MANHOLE.
 - NO REPRESENTATIVE OF THE COUNTY ENGINEER WILL SURVEY OR LAY OUT ANY PORTION OF THE WORK.
 - THE PRIVATE ENGINEER SHALL FURNISH THE COUNTY ENGINEER WITH GRADE SHEETS AND STATIONING FOR ALL HOUSE LATERALS AND "T" OR "Y" BRANCHES AND SHALL PROVIDE STAKES FOR THEM AT THEIR PROPER LOCATIONS WITH STATIONING PLAINLY MARKED. ALL HOUSE LATERALS SHALL BE CONSTRUCTED IN A STRAIGHT ALIGNMENT AT RIGHT ANGLES FROM THE MAIN LINE SEWER EXCEPT AS SHOWN ON THE PLANS. HOUSE LATERALS FROM CHIMNEYS SHALL NOT HAVE AN ANGLE OF LESS THAN 45° WITH THE MAIN LINE SEWER. ANY CHANGE IN ALIGNMENT SHALL BE REQUESTED BY WRITING BY THE PRIVATE ENGINEER.
 - THE PRIVATE ENGINEER SHALL FURNISH THE HOUSE LATERAL INVERTS AT THE PROPERTY LINE BELOW THE TOP OF CURB ELEVATION FOR EACH HOUSE LATERAL ON THE GRADE SHEET.
 - NO BRIDGES SHALL BE MADE IN THESE PLANS WITHOUT THE APPROVAL OF THE COUNTY ENGINEER.
 - THE CONTRACTOR SHALL NOTIFY THE CONSTRUCTION DIVISION BY TELEPHONE, HARBOR 6-42, EXT. 8158, AT LEAST TWENTY-FOUR HOURS BEFORE STARTING ANY WORK UNDER THIS CONTRACT.
 - ALL STRUCTURES SHALL BE EITHER BRICK MANHOLE PER S-3 OR PRECAST CONCRETE MANHOLE PER S-24 EXCEPT AS NOTED.
 - "T" OR "Y" BRANCHES MAY BE USED FOR CONNECTIONS TO MAINLINE SEWERS EXCEPT AS NOTED.
 - MANHOLE TOPS BE UNIMPROVED RIGHTS OF WAY TO BE 24 INCHES ABOVE FINISHED GRADE.
 - USE EXTRA STRENGTH PIPE ALL PIPE IS STANDARD DEPTH EXCEPT AS NOTED.
 - WETTED CLAY PIPE JOINTS SHALL BE TYPE "B", "C", OR "D" PER STANDARD SPECIFICATIONS SECTION 306.2.
 - IF A POWER POLE IS WITHIN THREE FEET OF THE SEWER, THE SEWER SHALL BE ENCASED, PER S-25, TWO FEET ON EACH SIDE FROM THE POINT OF INTERFERENCE.
 - IF DURING THE COURSE OF CONSTRUCTION IT IS DETERMINED THAT THERE IS LESS THAN FOUR FEET OF COVER OVER THE TOP OF A MAIN LINE OR HOUSE LATERAL V.C.P. SEWER WHICH IS NOT INDICATED ON THE PLANS, THE PIPE SHALL BE ENCASED PER S-25, UNLESS OTHERWISE APPROVED BY THE COUNTY ENGINEER.
 - RESURFACE ALL TRENCHES WITHIN PAVED AREAS TO MEET L.A. COUNTY ROAD DEPT. OR CALIFORNIA STATE HIGHWAY REQUIREMENTS IN ACCORDANCE WITH PERMITS.
 - SEWERS TO BE REVEALED FOR GRAVITY PER SECTION 306.2.3.7 OF THE STANDARD SPECIFICATIONS.
 - REFER TO SECTION 310.1.4 OF THE STANDARD SPECIFICATIONS, REGARDING SAFETY CHAINS.
 - ALL JOINTS BETWEEN CAST IRON PIPE AND WETTED CLAY PIPE SHALL BE MADE WITH A RUBBER SLEEVE JOINT, TYPE "C" OR "D", WITHIN BUREAU IF NECESSARY PER STANDARD SPECIFICATIONS, SECTION 306.2.
- THE FOLLOWING LATEST REVISED STANDARD PLANS ON FILE IN THE OFFICE OF THE COUNTY ENGINEER SHALL APPLY IN THE CONSTRUCTION OF THIS PROJECT:

MINIMUM PUBLIC UTILITY REQUIREMENTS	S-2
BRICK MANHOLE	S-3
NON-REINFORCED PRECAST CONCRETE MANHOLE	S-24
ANCHOR BLOCK	S-24
MANHOLE FRAME AND COVER	S-24
STANDARD MANHOLE STEP	S-27
RAFFLES FOR SEWER PIPE	S-21
CHANGING AND INCREASING	S-22
WYE OR THE SUPPORT	S-24
ALUMINUM BRIDGE STRUCTURE	S-21
RAFFLE BOARD	S-21

PROFILE, ALIGNMENT AND GRADE OF
SANITARY SEWERS P.C. 8527
 PAGE 1

OFF-SITE SEWER FOR
TRACT NO 27818

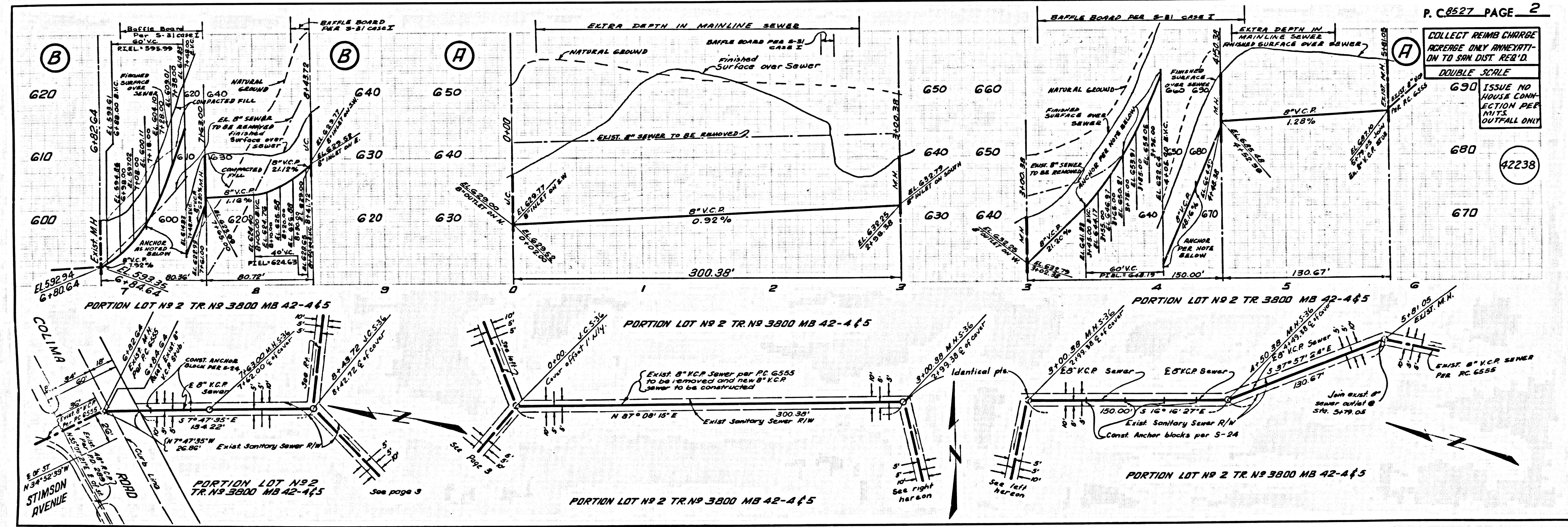
PRIVATE CONTRACT NO. 8527

W.S. 38
 2 SHEETS; 4 PAGES
 SCALE: HORIZ. 1"=40' VERT. 1"=4'
 PREPARED IN THE OFFICES OF
LIND & HILLERUD
 15729 TEXACO AVENUE, PARAMOUNT, CALIF. 90723
 REG. C. E. NO. 16362

NOTE:
 GRADES TO WHICH THIS IMPROVEMENT IS TO BE CONSTRUCTED ARE SHOWN ON PLANS AND PROFILE. GRADE POINTS FOR TOP OF CURBS, CENTER LINE OF STREETS, OR CENTER LINE OF ALLEYS ARE SHOWN BY CIRCLES ON PROFILES. AT ALL POINTS BETWEEN INDICATED POINTS THE GRADE SHALL BE ESTABLISHED TO AS TO CONFORM TO A STRAIGHT LINE DRAWN BETWEEN SAID INDICATED POINTS. ELEVATIONS ARE IN FEET ABOVE U.S.C. & G.S. SEA LEVEL DATUM OF 1929.
 WORK SHALL BE CONSTRUCTED ACCORDING TO THE STANDARD SPECIFICATIONS FOR PUBLIC WORKS CONSTRUCTION (LATEST EDITION) AND COUNTY ENGINEER SPECIAL PROVISIONS FOR THE CONSTRUCTION OF SANITARY SEWERS DATED APRIL 7, 1970, AND SHALL BE PROSECUTED ONLY IN THE PRESENCE OF THE COUNTY ENGINEER.
 HOUSE WORK CAN BE STARTED, THE CONTRACTOR MUST OBTAIN A PERMIT TO EXCAVATE IN COUNTY STREETS FROM THE L. A. COUNTY ROAD DEPT., DISTRICT OFFICE NO. 1, 1111 N. GARDEN ST., LOS ANGELES, CALIF. 90012, AND PAY A FEE TO THE COUNTY ENGINEER, ROOM 336, COUNTY ENGINEERING BUILDING, 100 WEST SECOND STREET, LOS ANGELES, CALIF. 90012. REGIONAL OFFICE, SUTTINGTON TO COVER THE COST OF CONSTRUCTION INSPECTION AND RECORD PLANS.
 APPROVAL OF THIS PLAN BY THE COUNTY OF LOS ANGELES DOES NOT CONSTITUTE A REPRESENTATION AS TO THE ACCURACY OF THE LOCATION OF THE EXISTENCE OR NON-EXISTENCE OF ANY UNDERGROUND UTILITY PIPE, OR STRUCTURE WITHIN THE LIMITS OF THE PROJECT. THIS NOTE APPLIES TO ALL PAGES.
 IF WORK IS TO BE DONE ON A STATE HIGHWAY, A PERMIT MUST BE OBTAINED FROM THE STATE OF CALIFORNIA, DIVISION OF HIGHWAYS, 120 SOUTH SPRING STREET, LOS ANGELES, CALIFORNIA.

COUNTY OF LOS ANGELES, CALIFORNIA
 JOHN A. LAMBE, COUNTY ENGINEER J. D. PARKHURST, CHIEF ENGINEER
 CO. ENGINEER
 APPROVED BY: *[Signature]* DATE: 9-17-70 APPROVED BY: *[Signature]* DATE: 9-17-70
 ASSISTANT COUNTY ENGINEER OFFICE ENGINEER
 CHECKED BY: *[Signature]* DATE: 9-17-70
 REG. C. E. NO. 13966

COLLECT CHARGES AS INDICATED



P.C. 8527 PAGE 2

**COLLECT REIMB CHARGE
 REFERENCE ONLY. INVESTITION TO SHM. DIST. RECD.
 DOUBLE SCALE**

ISSUE NO HOUSE CONNECTION PERMITS OUTFALL ONLY

42238

