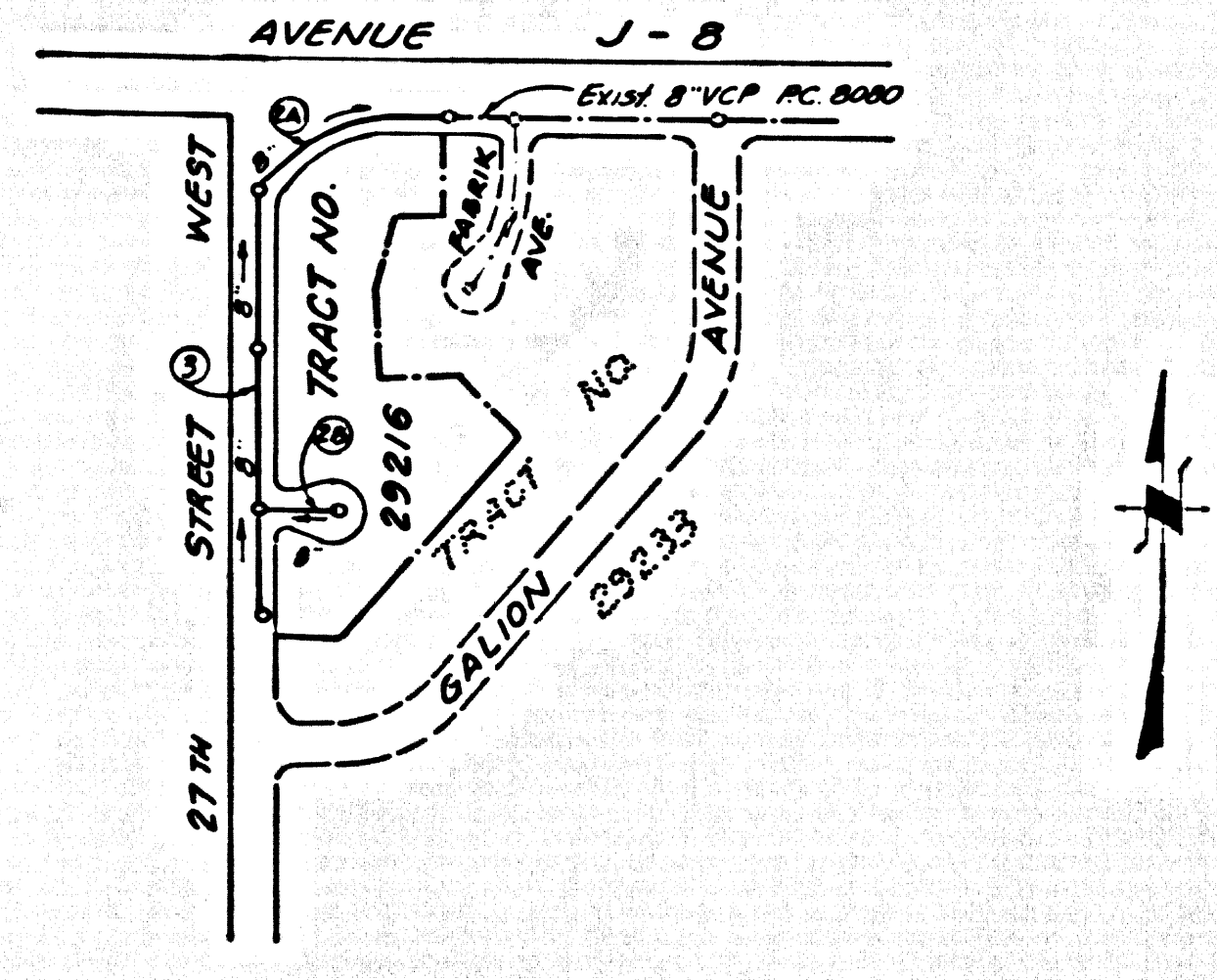


B.M. 51-721 ELEV. 2388.331  
 L & T CONC. DRIVE NEAR CONC. BLOCK POST  
 ± 42' S ± AVE. K ± 263' W ± 25<sup>TH</sup> ST.  
 W MKD B.M.  
 LANCASTER QUAD. 19 65



INDEX MAP  
 SCALE: 1"=300'  
 P.C. 8532

LANCASTER BLDG. DIST. NO. 8

- NOTES:
- HOUSE LATERALS TO BE CONSTRUCTED WITH INVERTS AT PROPERTY LINE 6 FEET BELOW CURB GRADE EXCEPT AS NOTED.
  - PROVIDE STAKES ON THE PROPERTY LINE OR PROPERTY LINES PRODUCED AT RIGHT ANGLES TO THE SEWER LINE AT THE CENTER LINE OF EACH MANHOLE.
  - NO REPRESENTATIVE OF THE COUNTY ENGINEER WILL SURVEY OR LAY OUT ANY PORTION OF THE WORK.
  - THE PRIVATE ENGINEER SHALL FURNISH THE COUNTY ENGINEER WITH GRADE SHEETS AND STATIONING FOR ALL HOUSE LATERALS AND "T" OR "Y" BRANCHES AND SHALL PROVIDE STAKES FOR THEM AT THESE PROPOSED LOCATIONS WITH STATIONING PLAINLY MARKED. ALL HOUSE LATERALS SHALL BE CONSTRUCTED IN A STRAIGHT ALIGNMENT AT RIGHT ANGLES FROM THE MAIN LINE SEWER EXCEPT AS SHOWN ON THE PLANS. HOUSE LATERALS FROM CHIMNEYS SHALL NOT HAVE AN ANGLE OF LESS THAN 45° WITH THE MAIN LINE SEWER. ANY CHANGE IN ALIGNMENT SHALL BE REQUESTED IN WRITING BY THE PRIVATE ENGINEER.
  - THE PRIVATE ENGINEER SHALL FURNISH THE HOUSE LATERAL DEPTH AT THE PROPERTY LINE BELOW THE TOP OF CURB ELEVATION FOR EACH HOUSE LATERAL ON THE GRADE SHEET.
  - NO REVISIONS SHALL BE MADE IN THESE PLANS WITHOUT THE APPROVAL OF THE COUNTY ENGINEER.
  - THE CONTRACTOR SHALL NOTIFY THE CONSTRUCTION DIVISION BY TELEPHONE, MADISON 9-6741, EXT. 8128, AT LEAST TWENTY-FOUR HOURS BEFORE STARTING ANY WORK UNDER THIS CONTRACT.
  - ALL STRUCTURES SHALL BE EITHER BRICK MANHOLES PER S-8 OR PRECAST CONCRETE MANHOLES PER S-2-B, EXCEPT AS NOTED.
  - "T" OR "Y" BRANCHES MAY BE USED FOR CONNECTIONS TO MAINLINE SEWERS EXCEPT AS NOTED.
  - MANHOLES PER S-8 ARE APPROVED UNLESS OTHERWISE SPECIFIED OTHERWISE.
  - USE EXTRA STRENGTH PIPE. ALL PIPE IS STANDARD DEPTH EXCEPT AS NOTED.
  - VITRIFIED CLAY PIPE JOINTS SHALL BE TYPE "B", "F", OR "G" PER STANDARD SPECIFICATIONS SECTION 288.2.
  - IF A POWER POLE IS WITHIN THREE FEET OF THE SEWER, THE SEWER SHALL BE ENCASED, PER S-7, TWO FEET ON EACH SIDE FROM THE POINT OF INTERFERENCE.
  - IF DURING THE COURSE OF CONSTRUCTION IT IS DETERMINED THAT THERE IS LESS THAN FOUR FEET OF COVER OVER THE TOP OF A MAIN LINE OR HOUSE LATERAL V.C.P. SEWER WHICH IS NOT INDICATED ON THE PLANS, THE PIPE SHALL BE ENCASED PER S-2-B, UNLESS OTHERWISE APPROVED BY THE COUNTY ENGINEER.
  - RESURFACE ALL FINISHED WITHIN PAVED AREAS TO MEET L.A. COUNTY ROAD DEPT. OR CALIFORNIA STATE HIGHWAY REQUIREMENTS IN ACCORDANCE WITH PERMITS.
  - SEWERS TO BE SET FOR EASING PER SECTION 288.2.7 OF THE STANDARD SPECIFICATIONS.
  - REFER TO SECTION 116.1.1 OF THE STANDARD SPECIFICATIONS, REGARDING SAFETY CHAINS.
  - ALL JOINTS BETWEEN CAST IRON PIPE AND VITRIFIED CLAY PIPE SHALL BE MADE WITH A RUBBER SLEEVE JOINT, TYPE "C" OR "D", WITH BUSHING IF NECESSARY PER STANDARD SPECIFICATIONS, SECTION 288.2.

THE FOLLOWING LATEST REVISED STANDARD PLANS ON FILE IN THE OFFICE OF THE COUNTY ENGINEER SHALL APPLY IN THE CONSTRUCTION OF THIS PROJECT:

STANDARD	SECTION
MINIMUM PUBLIC SAFETY REQUIREMENTS	S-1
BRICK MANHOLE	S-8
NON-REINFORCED PRECAST CONCRETE MANHOLE	S-2-B
REINFORCED-PRECAST CONCRETE MANHOLE	S-2-A
MANHOLE FRAME AND COVER	S-16
STANDARD MANHOLE SET	S-17
RECORDS FOR SEWER PIPE	S-21
CHANGING AND REPAIRING	S-22
PIPE ON THE SUPPORT	S-23
ALLOWABLE TRENCH WIDTHS	S-25

County Sanitation Districts shall be notified prior to the following so that required inspection can be made (Phone 237-1025 - 638-1161)  
 Acceptance of the project.

No objections for the disposal of industrial wastes shall be made to sewers shown on these drawings without written permission from the Chief Engineer and General Manager of the County Sanitation Districts.

COLLECT CHARGES AS INDICATED

PROFILE, ALIGNMENT AND GRADE OF  
**SANITARY SEWERS** P.C. 8532  
 CONSTRUCTED IN PAGE 1  
 TRACT NO. 29216

PRIVATE CONTRACT NO. 8532

W.S. 71-D-5  
 2 SHEETS, 3 PAGES  
 SCALE: VERT. 1"=4' OCT. 1969  
 HORIZ. 1"=40'  
 PREPARED IN THE OFFICE OF  
 SCHORA ENGINEERS  
 13603 VICTORY BLVD.  
 VAN NUYS, CALIF.  
 REG. C. E. NO. 12955

NOTE: GRADES TO WHICH THIS IMPROVEMENT IS TO BE CONSTRUCTED ARE SHOWN ON PLANS AND PROFILES. GRADE POINTS FOR TOP OF CURBS, CENTER LINE OF STREETS, OR CENTER LINE OF ALLEYS ARE SHOWN BY CIRCLES ON PROFILES AT ALL POINTS BETWEEN DESIGNATED POINTS. THE GRADE SHALL BE ESTABLISHED SO AS TO CONFORM TO A STRAIGHT LINE DRAWN BETWEEN SAID DESIGNATED POINTS. REVISIONS ARE IN RED ABOVE U.S.C. & G.S. SEA LEVEL DATUM OF 1929. THIS CONTRACT SHALL BE IN ACCORDANCE WITH THE STANDARD SPECIFICATIONS FOR PUBLIC WORKS CONSTRUCTION. A SPECIAL PROVISION FOR THE CONSTRUCTION OF SANITARY SEWERS DATED SEP. 2, 1970, AND SHALL BE PROSECUTED ONLY IN THE PRESENCE OF THE COUNTY ENGINEER.

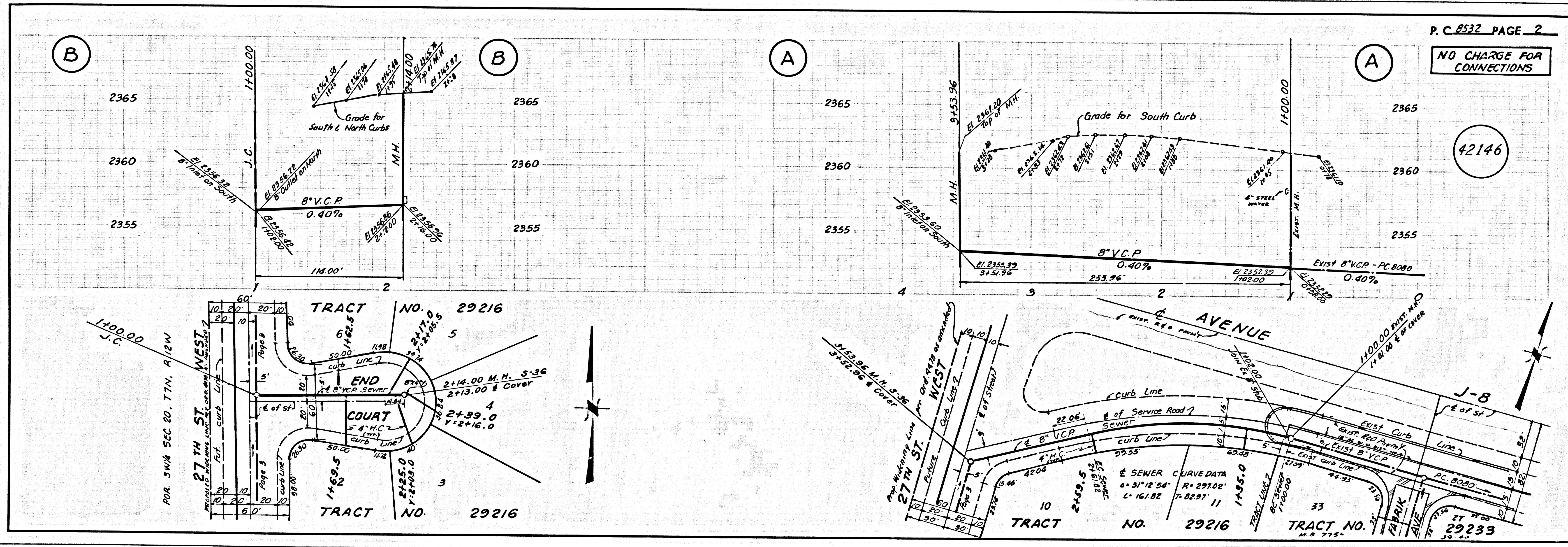
APPROVAL OF THIS PLAN BY THE COUNTY OF LOS ANGELES DOES NOT CONSTITUTE A REPRESENTATION AS TO THE ACCURACY OF THE LOCATION OF OR THE EXISTENCE OR NON-EXISTENCE OF ANY UNDERGROUND UTILITY PIPE, OR STRUCTURE WITHIN THE LIMITS OF THIS PROJECT. THIS NOTE APPLIES TO ALL PAGES.

APPROVED BY: *[Signature]* COUNTY ENGINEER  
 JOHN A. LAMBE, COUNTY ENGINEER J. D. PARKHURST, CHIEF ENGINEER

CHECKED BY: *[Signature]* DATE: 11-6-70  
 REG. C. E. NO. 16742

42145

J.N. 0250.02



P.C. 8532 PAGE 2

NO CHARGE FOR CONNECTIONS

42146

COLLECT CHARGES AS INDICATED

42147

