

B.M. B.Y. 2987 ELEV. 114.790
 Lead 4 feet west curb 84 North S.C.R.
 @ N.W. Corner Avenue Blvd. 1
 El. Sagundo Blvd.
 WATTS QUAD. 1965

PRIVATE ENGINEERS NOTICE TO CONTRACTORS
 The existence and location of any underground utility or structure shown on these plans are obtained by a search of the available records. To the best of our knowledge there are no existing utilities except as shown on this map. The contractor is required to take due precautionary measures to protect the utility lines shown and any other lines not of record or not shown on this map.

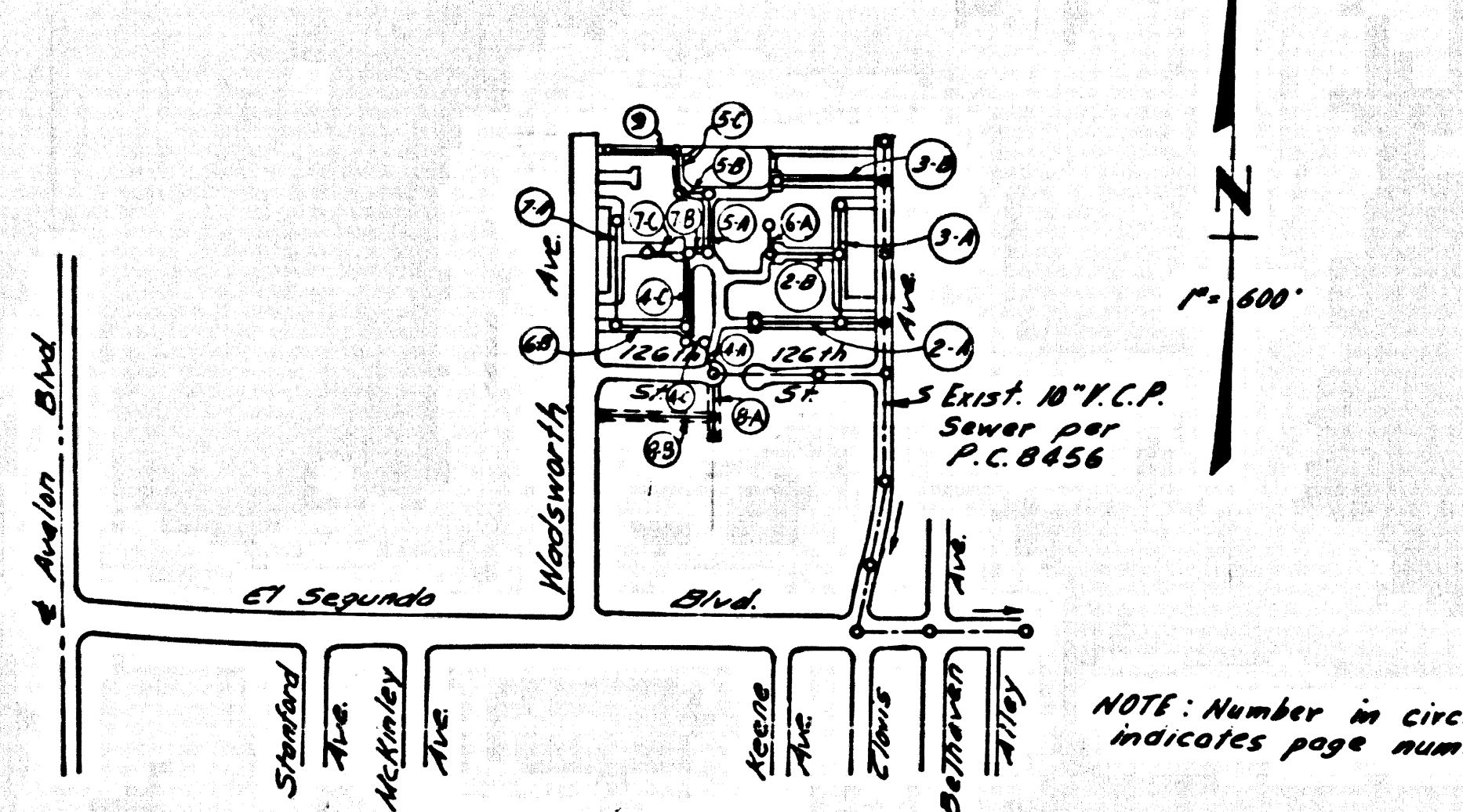
E.L. Walker Jr.
 R.C.E. 10533

LENNOX BLDG. DIST. NO. 7

PROFILE, ALIGNMENT AND GRADE OF
SANITARY SEWERS P.C. 8534
 TO BE CONSTRUCTED IN PAGE 1

TRACT NO. 29355
 PRIVATE CONTRACT NO. 8534

W.S. 26
 5 SHEETS; 9 PAGES
 SCALE: VERT. 1" = 4'
 HORIZ. 1" = 40'
 JUNE, 1970
 PREPARED IN THE OFFICES OF
ANDEL ENGINEERING COMPANY
 BY: *E.L. Walker Jr.*
 REG. C. E. NO. 10533



INDEX MAP
 P.C. 8534
 TRACT NO. 29355

COLLECT CHARGES
 AS INDICATED

- NOTES:**
- HOUSE LATERALS TO BE CONSTRUCTED WITH INVERTS AT PROPERTY LINE 4 FEET BELOW CURB GRADE EXCEPT AS NOTED.
 - POURING SLABS ON THE PROPERTY LINE OR PROPERTY LINES PRODUCED AT RIGHT ANGLES TO THE SEWER LINE AT THE CENTER LINE OF EACH MANHOLE.
 - NO REPRESENTATIVE OF THE COUNTY ENGINEER WILL SURVEY OR LAY OUT ANY PORTION OF THE WORK.
 - THE PRIVATE ENGINEER SHALL FURNISH THE COUNTY ENGINEER WITH GRADE SHEETS AND STATIONING FOR ALL HOUSE LATERALS AND "T" OR "T" BRANCHES AND SHALL PROVIDE STAGES FOR THESE AT THEIR PROPER LOCATIONS WITH STATIONING PLAINLY MARKED. ALL HOUSE LATERALS SHALL BE CONSTRUCTED IN A STRAIGHT ALIGNMENT AT RIGHT ANGLES FROM THE MAIN LINE SEWER EXCEPT AS SHOWN ON THE PLANS. HOUSE LATERALS FROM CHIMNEYS SHALL NOT HAVE AN ANGLE OF LESS THAN 45° WITH THE MAIN LINE SEWER. ANY CHANGE IN ALIGNMENT SHALL BE REQUESTED BY WRITING BY THE PRIVATE ENGINEER.
 - THE PRIVATE ENGINEER SHALL FURNISH THE HOUSE LATERAL DEPTH AT THE PROPERTY LINE BELOW THE TOP OF CURB ELEVATION FOR EACH HOUSE LATERAL ON THE GRADE SHEET.
 - NO REVISIONS SHALL BE MADE IN THESE PLANS WITHOUT THE APPROVAL OF THE COUNTY ENGINEER.
 - THE CONTRACTOR SHALL NOTIFY THE CONSTRUCTION DIVISION BY TELEPHONE, MARSHALL 9-4742, EXT. 8158, AT LEAST TWENTY-FOUR HOURS BEFORE STARTING ANY WORK UNDER THIS CONTRACT.
 - ALL STRUCTURES SHALL BE BRICK MANHOLES PER 2.2 OF PRECAST CONCRETE MANHOLES PER 2.96 EXCEPT AS NOTED.
 - "T" OR "T" BRANCHES MAY BE USED FOR CONNECTIONS TO MAINLINE SEWERS EXCEPT AS NOTED.
 - MANHOLE TOPS IN UNIMPROVED PORTS OF WAY TO BE SIX INCHES ABOVE FINISHED GRADE.
 - USE EXTRA STRENGTH PIPE, ALL PIPE IS STANDARD DEPTH EXCEPT AS NOTED.
 - VITRIFIED CLAY PIPE JOINTS SHALL BE TYPE "S", "T", OR "W" PER STANDARD SPECIFICATIONS SECTION 388.2.
 - IF A POWER POLE IS WITHIN THREE FEET OF THE SEWER, THE SEWER SHALL BE ENCASED, PER 2-25, TWO FEET ON EACH SIDE FROM THE POINT OF INTERFERENCE.
 - IF DURING THE COURSE OF CONSTRUCTION IT IS DETERMINED THAT THERE IS LESS THAN FOUR FEET OF COVER OVER THE TOP OF A MAIN LINE OR HOUSE LATERAL V.C.P. SEWER WHICH IS NOT INDICATED ON THE PLANS, THE PIPE SHALL BE ENCASED PER 2-25, UNLESS OTHERWISE APPROVED BY THE COUNTY ENGINEER.
 - INSURE ALL TRUCKS WITHIN PAVED AREAS TO AVOID L.A. COUNTY ROAD DEPT. OR CALIFORNIA STATE HIGHWAY REQUIREMENTS BY ACCORDANCE WITH PERMITS.
 - SEWERS TO BE TESTED FOR LEAKAGE PER SECTION 384.3.2 OF THE STANDARD SPECIFICATIONS.
 - REFER TO SECTION 7.1.1.1 OF THE STANDARD SPECIFICATIONS, REGARDING SAFETY CADDIS.
 - ALL JOINTS BETWEEN CAST IRON PIPE AND VITRIFIED CLAY PIPE SHALL BE MADE WITH A RUBBER SLEEVE JOINT, TYPE "C" OR "F", EXCEPT AS NOTED PER STANDARD SPECIFICATIONS, SECTION 388.2.

THE FOLLOWING LATEST STANDARD PLANS ON FILE IN THE OFFICE OF THE COUNTY ENGINEER SHALL APPLY IN THE CONSTRUCTION OF THIS PROJECT.

ISSUES	5.1
MINIMUM PUBLIC SAFETY REQUIREMENTS	5.2
BRICK MANHOLE	5.3
NON-REINFORCED PRECAST CONCRETE MANHOLE	5.6
MANHOLE FRAME AND COVER	5.25
STANDARD MANHOLE STEP	5.17
REINFORCING FOR SEWER PIPE	5.21
CHASING AND ENCASING	5.22
PIPE ON TIE SUPPORT	5.26
ALLOWABLE TRENCH WIDTHS	5.28

County Sanitation Districts shall be notified prior to the following work that required inspection can be made (Phone numbers: 629-1161)

Acceptance of E&A project.

No connections for the disposal of industrial wastes shall be made to sewer lines or lines existing without written permission from the Chief Engineer and General Manager of the County Sanitation Districts.

NOTE:
 GRADE TO WHICH THIS IMPROVEMENT IS TO BE CONSTRUCTED ARE SHOWN ON PLANS AND PROFILES. GRADE POINTS FOR TOP OF CURB, CENTER LINE OF STREETS, OR CENTER LINE OF ALLEYS ARE SHOWN BY CIRCLES ON PROFILES. AT ALL POINTS BETWEEN DESIGNATED POINTS THE GRADE SHALL BE ESTABLISHED SO AS TO CONFORM TO A STRAIGHT LINE BETWEEN SAID DESIGNATED POINTS. ELEVATIONS ARE IN FEET ABOVE U.S.C. & G.S. SEA LEVEL DATUM OF 1929.

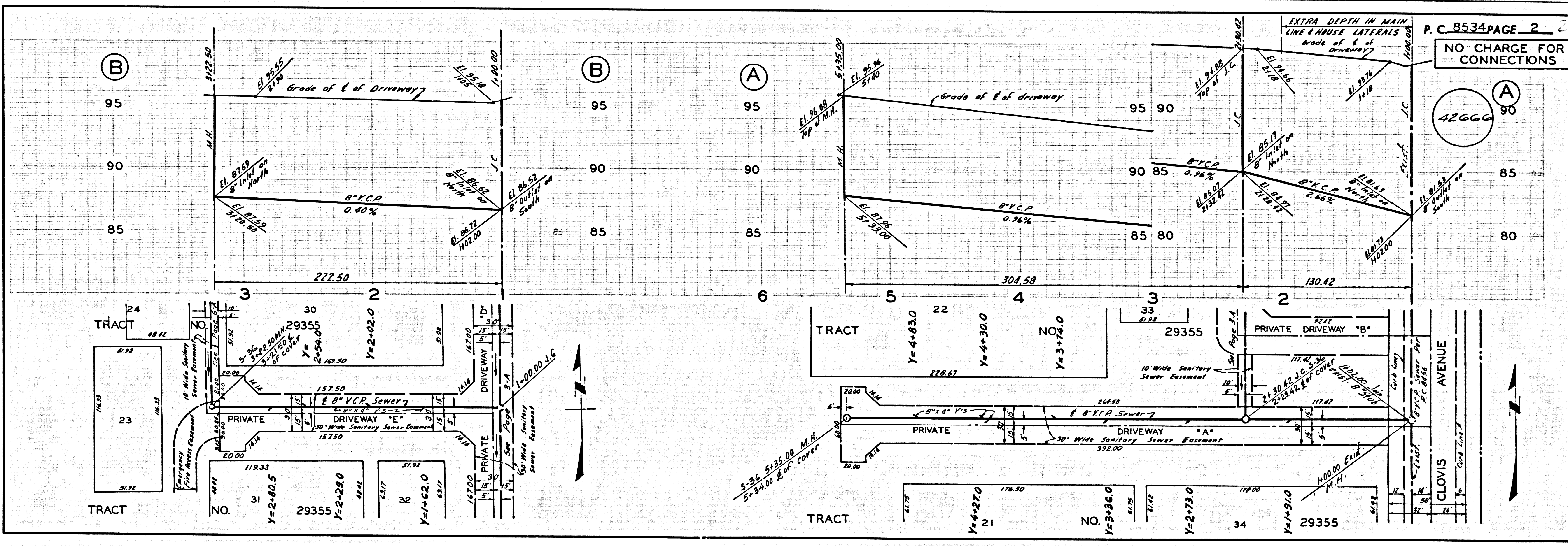
WORK SHALL BE CONSTRUCTED ACCORDING TO THE STANDARD SPECIFICATIONS FOR PUBLIC WORKS CONSTRUCTION (1970 EDITION) AND COUNTY ENGINEER SPECIAL ORDINANCES AND THE CONSTRUCTION OF SANITARY SEWERS DATED APRIL 7, 1970 AND SHALL BE PROSECUTED IN THE PRESENCE OF THE CH. ENGINEER.

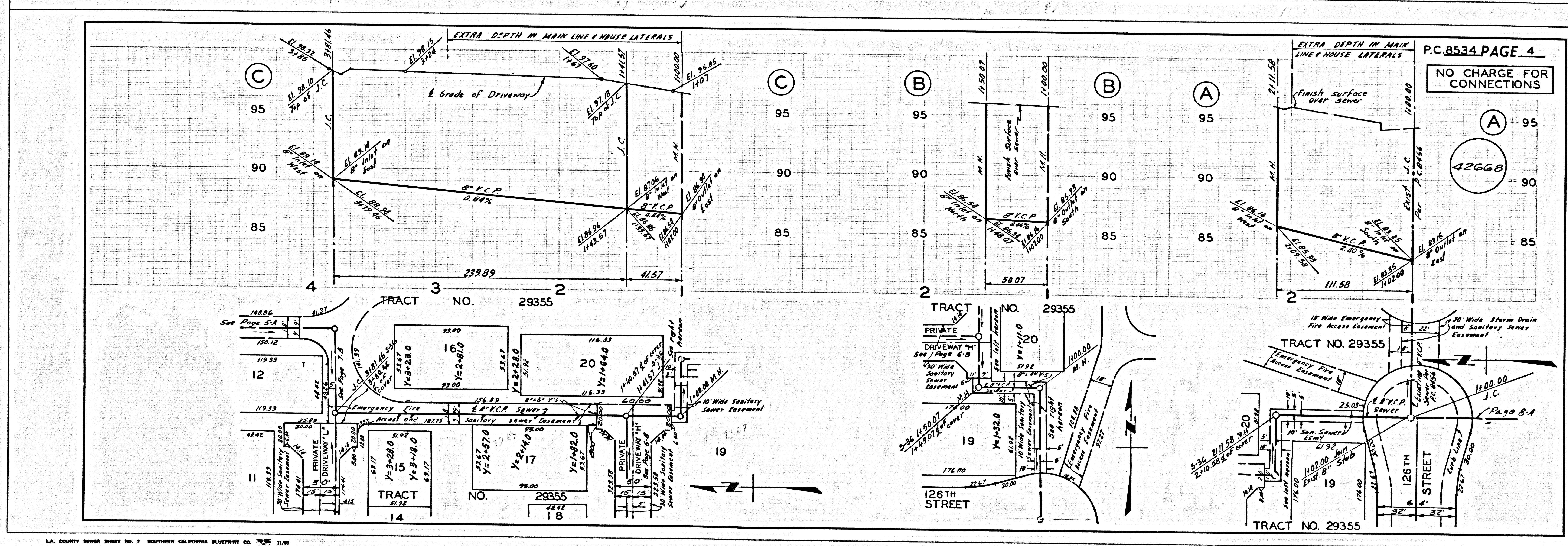
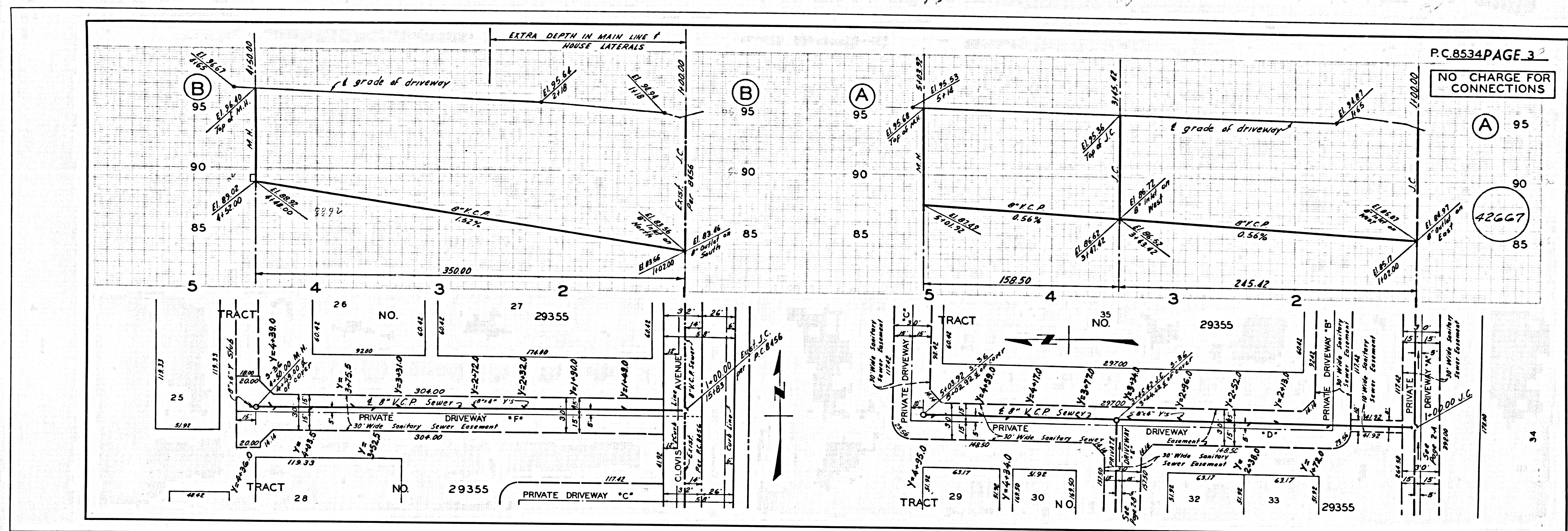
BEFORE WORK CAN BE STARTED, THE CONTRACTOR MUST OBTAIN A PERMIT TO EXCAVATE IN COUNTY STREETS FROM THE L.A. COUNTY ROAD DEPT., DISTRICT OFFICE NO. 1, 11111, AND PAY A FEE TO THE COUNTY ENGINEER, ROOM 338, COUNTY ENGINEERING BUILDING, 100 WEST SECOND STREET, LOS ANGELES, CALIFORNIA 90012. REGIONAL OFFICE, SUPERVISOR TO COVER THE COST OF CONSTRUCTION INSPECTION AND RECORD PLANS.

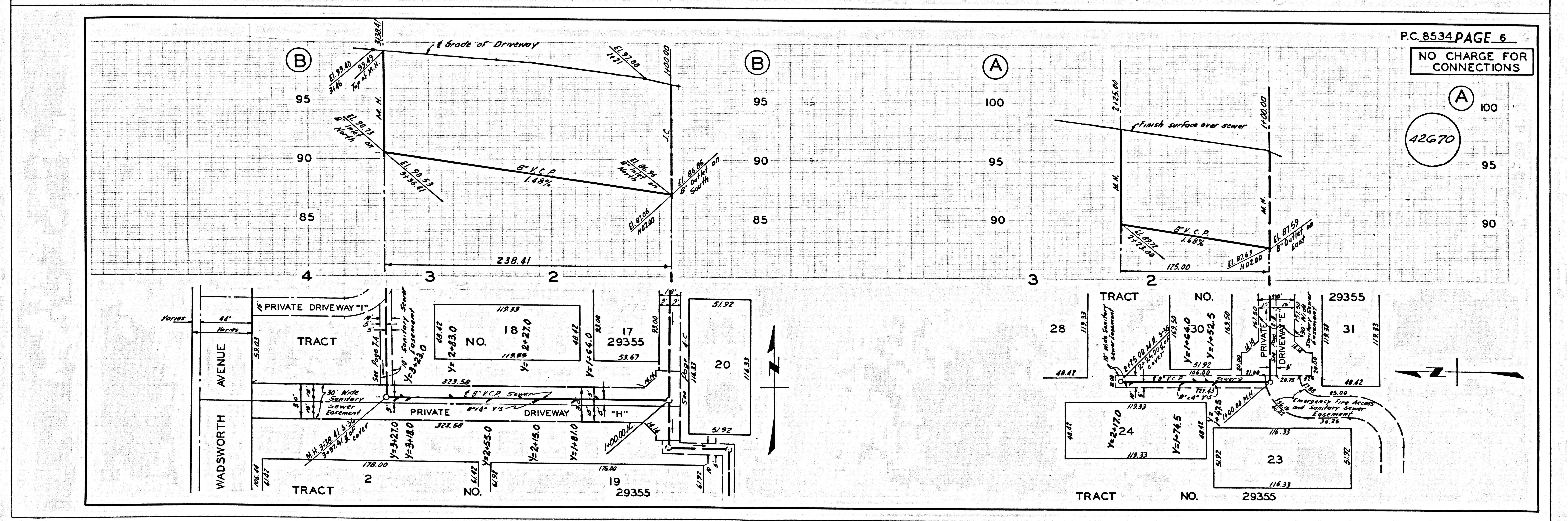
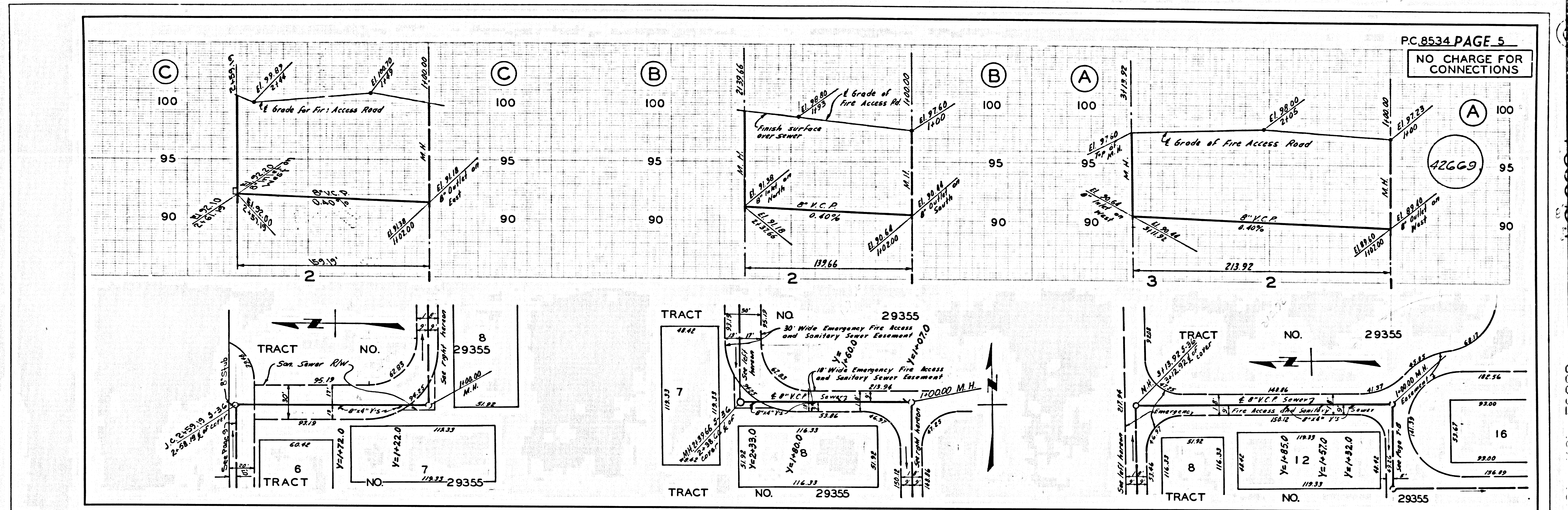
APPROVAL OF THIS PLAN BY THE COUNTY OF LOS ANGELES DOES NOT CONSTITUTE A REPRESENTATION AS TO THE ACCURACY OF THE LOCATION OF OR THE EXISTENCE OR NON-EXISTENCE OF ANY UNDERGROUND UTILITY PIPE, OR STRUCTURE WITHIN THE LIMITS OF THE PROJECT. THIS NOTICE APPLIES TO ALL PAGES.

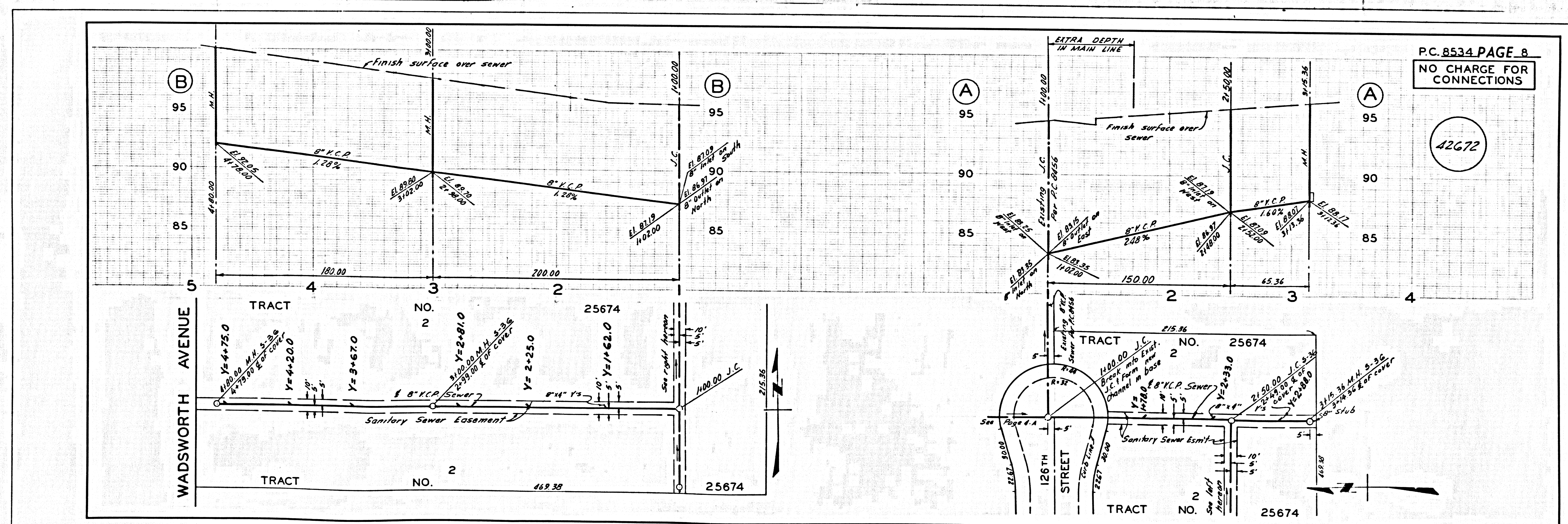
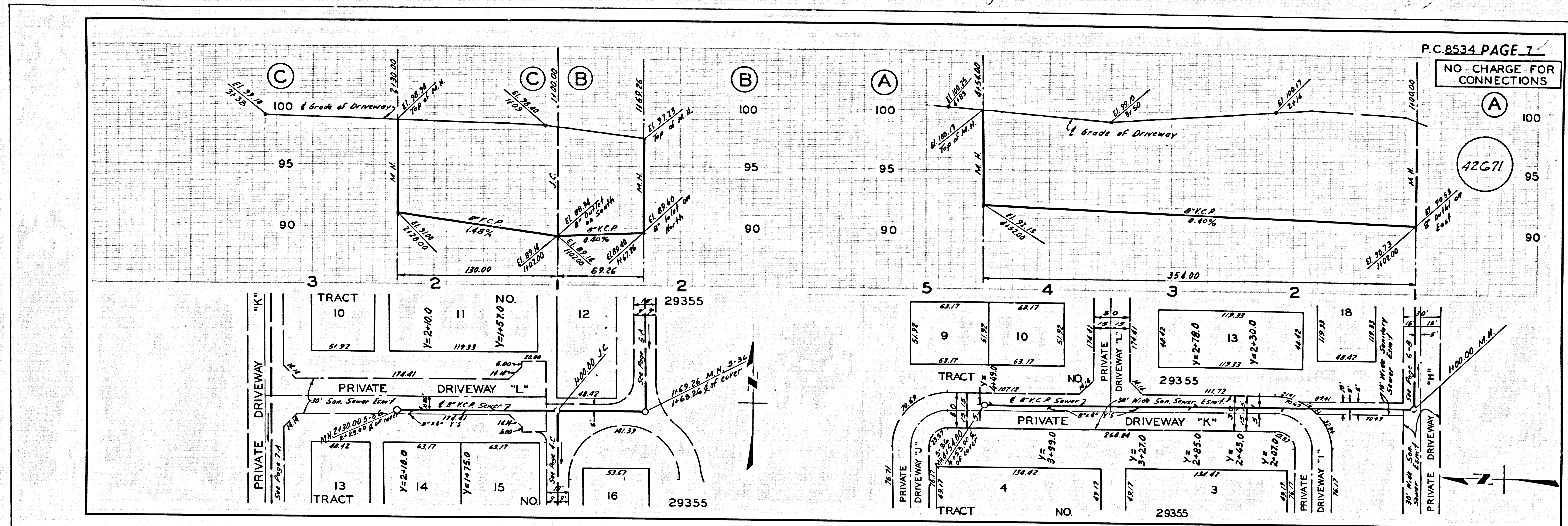
IF WORK IS TO BE DONE IN A STATE HIGHWAY, A PERMIT MUST BE OBTAINED FROM THE STATE OF CALIFORNIA, DIVISION OF HIGHWAYS, 158 SOUTH SPRING STREET, LOS ANGELES, CALIFORNIA.

COUNTY OF LOS ANGELES, CALIFORNIA
 JOHN A. LAMMIE, COUNTY ENGINEER J. D. PARKHURST, CHIEF ENGINEER
 CO. MANAGER
 APPROVED BY: *E.L. Walker Jr.* APPROVED BY: *J.D. Parkhurst*
 REG. C. E. NO. 10533









4
PC 8534
PAGE 7
PAGE 8
TRACT

