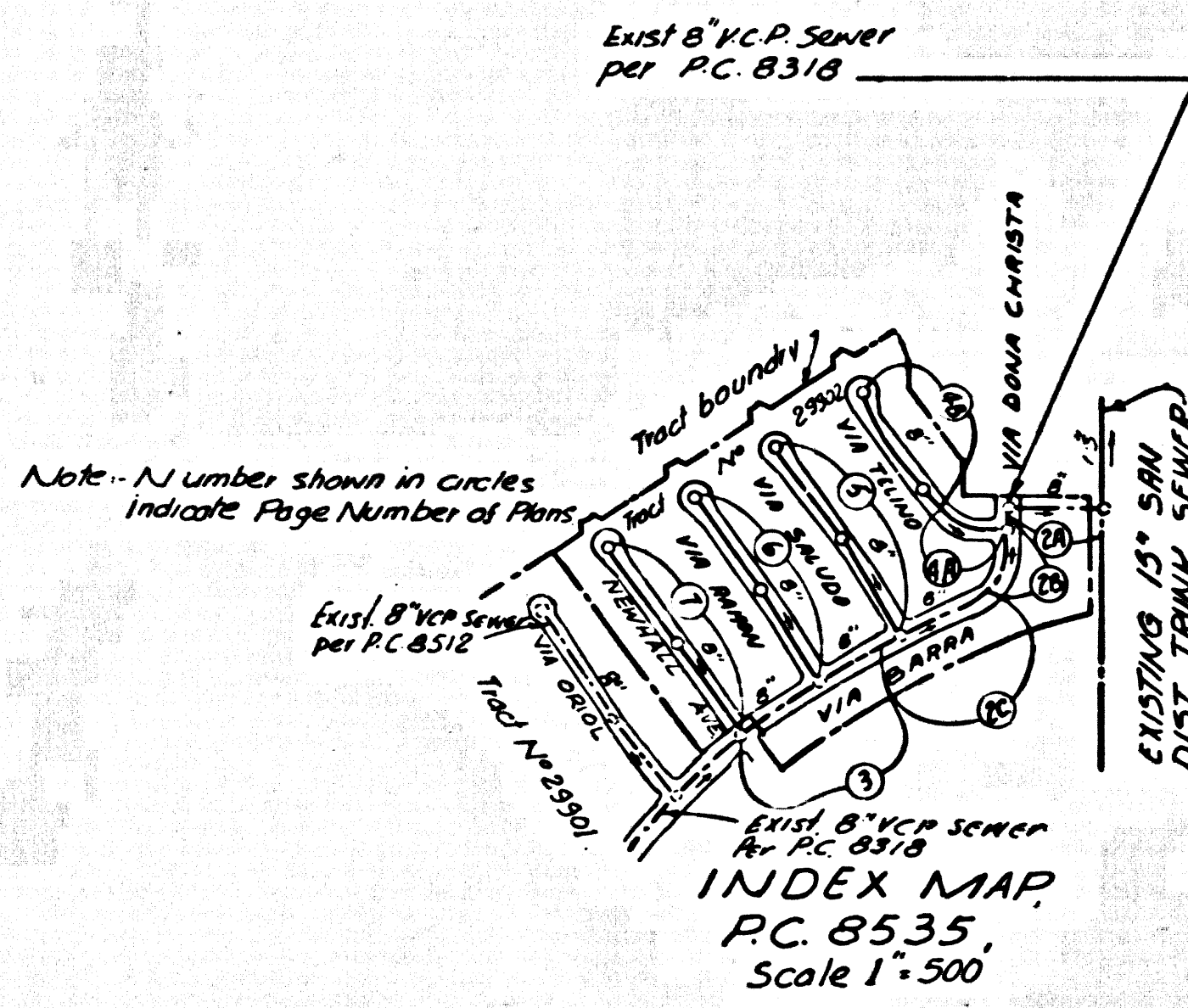


B.M. BL 608 ELEV 1216.300  
 U.S.C. & G.S. Mon. S. end Bridge 33-14  
 over Placitas Creek 3 1/4 mi. S. and Co.  
 18 E. of San Fernando Blvd. 1.0 MI. N. of Newhall  
 NEWHALL QUAD. 19 65.



**20 Special Backfill in Designated Areas.**  
 (a) Backfill trench and replace other earth removed so as to achieve the natural or finished grades and slopes shown on the grading plan approved for this development by the Building and Safety Division.  
 (b) All backfill and earth replaced shall be compacted to a minimum of 90% of maximum density per A.S.T.M. Standard method of Test D 698-57T as modified. Acceptance Certification of 300A Compaction shall be submitted to the construction division.

Lot No 116  
 is Passed  
 Service not Required

**NOTICE TO CONTRACTOR**  
 The existence and location of any underground utility pipes or structures shown on these plans are obtained by a search of the available records. To the best of my knowledge there are no existing utilities except as shown on these plans. The contractor is to locate the utility lines shown and any other lines not of record or not shown on these plans.

Issue No Permits until PC8318 & PC 8312 are accepted.

No connections for the disposal of industrial wastes shall be made to sewers shown on these drawings without written permission from the Chief Engineer and General Manager of the County Sanitation Districts.

County Sanitation Districts shall be notified prior to the following as required in Section 180106 (Public Works Code 180106).

Acceptance of the project.

**NEWHALL BLDG. DIST. NO. 82**

- NOTES:
- HOUSE LATERALS TO BE CONSTRUCTED WITH INVERTS AT PROPERTY LINE 4 FEET BELOW CURB GRADE EXCEPT AS NOTED.
  - PROVIDE STAIRS ON THE PROPERTY LINE OR PROPERTY LINES PRODUCED AT RIGHT ANGLES TO THE SEWER LINE AT THE CENTER LINE OF EACH MANHOLE.
  - NO REPRESENTATIVE OF THE COUNTY ENGINEER WILL SURVEY OR LAY OUT ANY PORTION OF THE WORK.
  - THE PRIVATE ENGINEER SHALL FURNISH THE COUNTY ENGINEER WITH GRADE SHEETS AND STATIONING FOR ALL HOUSE LATERALS AND "T" OR "T" BRANCHES AND SHALL PROVIDE STAIRS FOR THEM AT THEIR PROPER LOCATIONS WITH STATIONING PLAINLY MARKED. ALL HOUSE LATERALS SHALL BE CONSTRUCTED IN A STRAIGHT ALIGNMENT AT RIGHT ANGLES FROM THE MAIN LINE SEWER EXCEPT AS SHOWN ON THE PLANS. HOUSE LATERAL POOR CHANGES SHALL NOT HAVE AN ANGLE OF LESS THAN 45° WITH THE MAIN LINE SEWER. ANY CHANGE IN ALIGNMENT SHALL BE REQUESTED IN WRITING BY THE PRIVATE ENGINEER.
  - THE PRIVATE ENGINEER SHALL FURNISH THE HOUSE LATERAL DEPTH AT THE PROPERTY LINE BELOW THE TOP OF CURB ELEVATION FOR EACH HOUSE LATERAL ON THE GRADE SHEET.
  - NO REVISIONS SHALL BE MADE IN THESE PLANS WITHOUT THE APPROVAL OF THE COUNTY ENGINEER.
  - THE CONTRACTOR SHALL NOTIFY THE CONSTRUCTION DIVISION BY TELEPHONE, MADISON 7-4700, EXT. 8188, AT LEAST TWENTY-FOUR HOURS BEFORE STARTING ANY WORK UNDER THIS CONTRACT.
  - ALL STRUCTURES SHALL BE SET BY BRICK MANHOLES PER S-2 ON PRECAST CONCRETE MANHOLES PER S-3-6 EXCEPT AS NOTED.
  - "T" OR "T" BRANCHES MAY BE USED FOR CONNECTIONS TO MAINTAIN SEWERS EXCEPT AS NOTED.
  - MANHOLE TOPS IN UNIMPROVED RIGHTS OF WAY TO BE 6 INCHES ABOVE FINISHED GRADE.
  - USE EXTRA STRENGTH PIPE. ALL PIPE IS STANDARD DEPTH EXCEPT AS NOTED.
  - VERTICAL CLEARANCE SHALL BE TYPE "C", "D", OR "E" PER STANDARD SPECIFICATIONS SECTION 286.2.
  - IF A POWER POLE IS WITHIN THREE FEET OF THE SEWER, THE SEWER SHALL BE ENCASED, PER S-23, TWO FEET ON EACH SIDE FROM THE POINT OF INTERFERENCE.
  - IF DURING THE COURSE OF CONSTRUCTION IT IS DETERMINED THAT THERE IS LESS THAN FOUR FEET OF COVER OVER THE TOP OF A MAIN LINE OR HOUSE LATERAL V.C.P. SEWER WHICH IS NOT INDICATED ON THE PLANS, THE PIPE SHALL BE ENCASED PER S-24, UNLESS OTHERWISE APPROVED BY THE COUNTY ENGINEER.
  - REQUIRE ALL TRENCHES WITHIN PAVED AREAS TO MEET L.A. COUNTY ROAD DEPT. OR CALIFORNIA STATE HIGHWAY REQUIREMENTS IN ACCORDANCE WITH PERMITS.
  - SEWERS TO BE TESTED FOR LEAKAGE PER SECTION 286.2.7 OF THE STANDARD SPECIFICATIONS.
  - REFER TO SECTION 7-16.1.1 OF THE STANDARD SPECIFICATIONS, REGARDING SAFETY CODES.
  - ALL JOINTS BETWEEN CLAY PIPE AND VITRIFIED CLAY PIPE SHALL BE MADE WITH A RUBBER SLEEVE JOINT, TYPE "C" OR "D", WITH BRUSHING IF NECESSARY PER STANDARD SPECIFICATIONS, SECTION 286.2.
  - HOUSE LATERALS SHALL BE CONSTRUCTED WITH A RISE OF 1/4 INCH PER FOOT TO THE CONNECTION WITH THE MAIN LINE SEWER PER STANDARD PLANS ON FILE IN THE OFFICE OF THE COUNTY ENGINEER.

LEADING	5.0
MINIMUM PUBLIC SAFETY REQUIREMENTS	5.0
BRICK MANHOLE	5.2
NON-REINFORCED PRECAST CONCRETE MANHOLE	5.34
REINFORCED MANHOLE FRAME AND COVER	5.35
STANDARD MANHOLE STEP	5.37
REINFORCED FOR STREET PIPE	5.41
CHAMBER AND ENCASUREMENT	5.42
PIPE ON THE SURFACE	5.43
ALLOWABLE TRENCH WIDTHS	5.48

REVISION:  
 Page No 7 Lowered Sewer Grades  
 Due to Utility Interference  
 Approved: Date: 5-27-71  
 Office of the County Engineer

PROFILE, ALIGNMENT AND GRADE OF  
**SANITARY SEWERS**

CONSTRUCTED IN  
**TRACT No 29902**  
 Sikand Engineering Associates, Inc.  
 15205 BELMONT BOULEVARD  
 VAN NUYS, CALIFORNIA 91404  
 767-8550

**PRIVATE CONTRACT NO. 8535**  
 INDEX 252-5-121

W.S. 62  
 4 SHEETS; 7 PAGES  
 SCALE: VERT. 1"=4'  
 HORIZ. 1"=40' October, 1970  
 PREPARED IN THE OFFICES OF

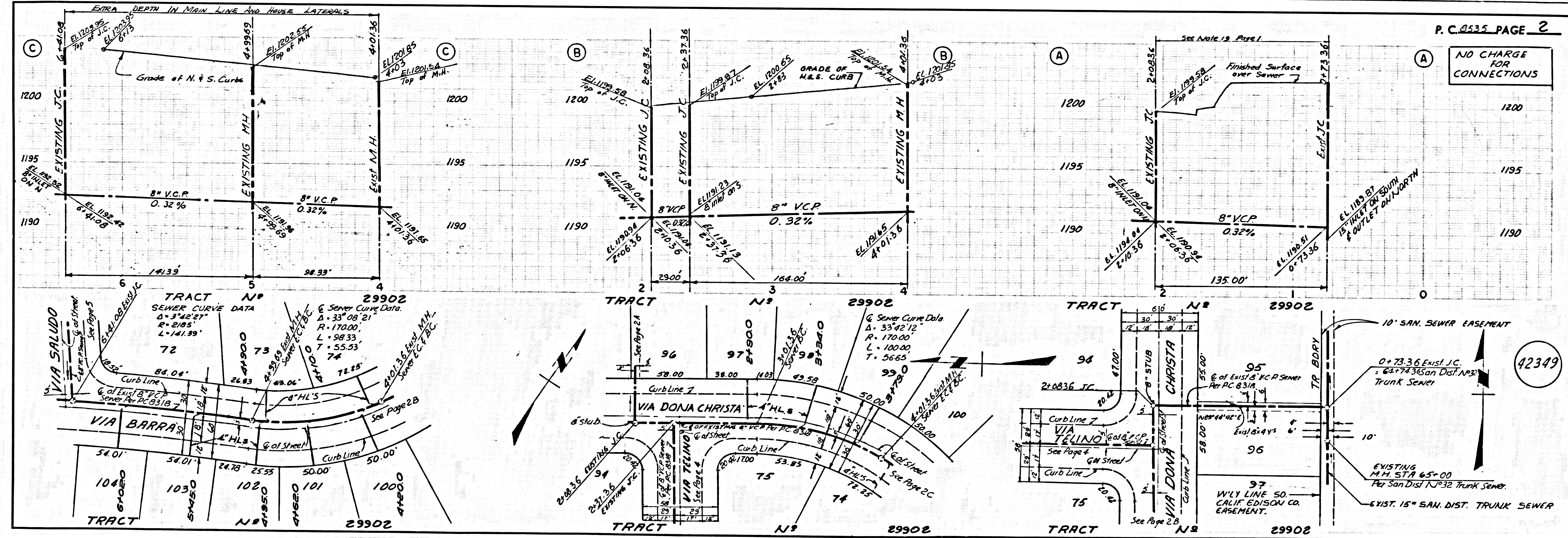
By: *G. J. Sikand*  
 REG. C. E. NO. 9553

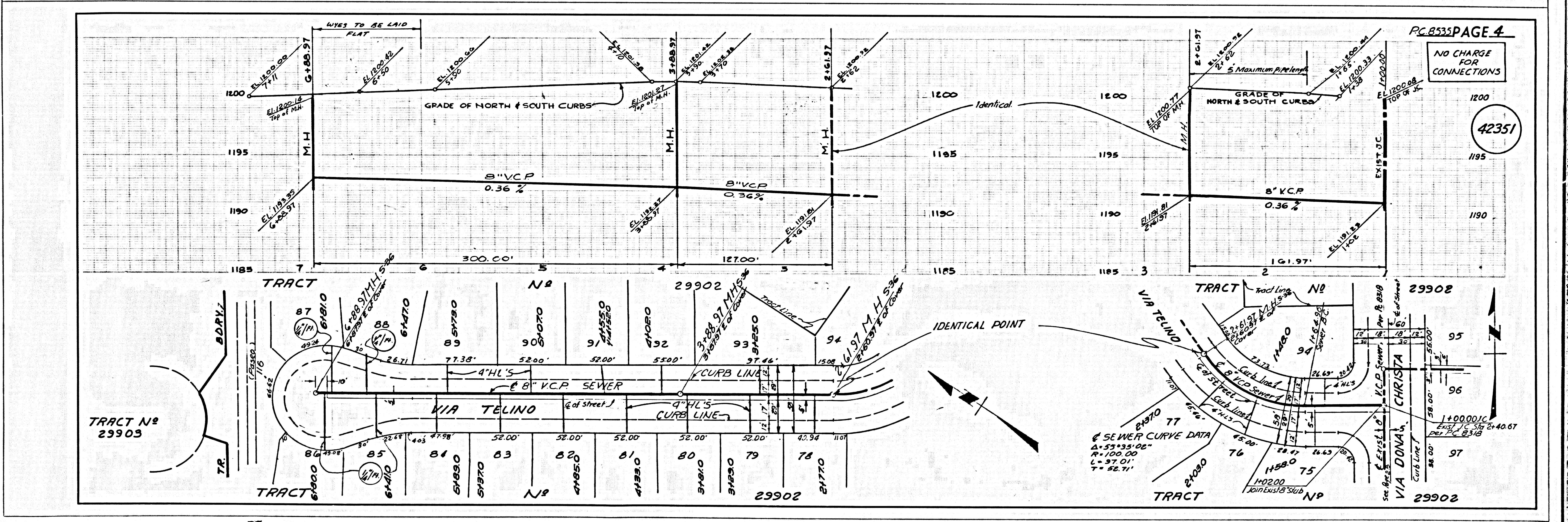
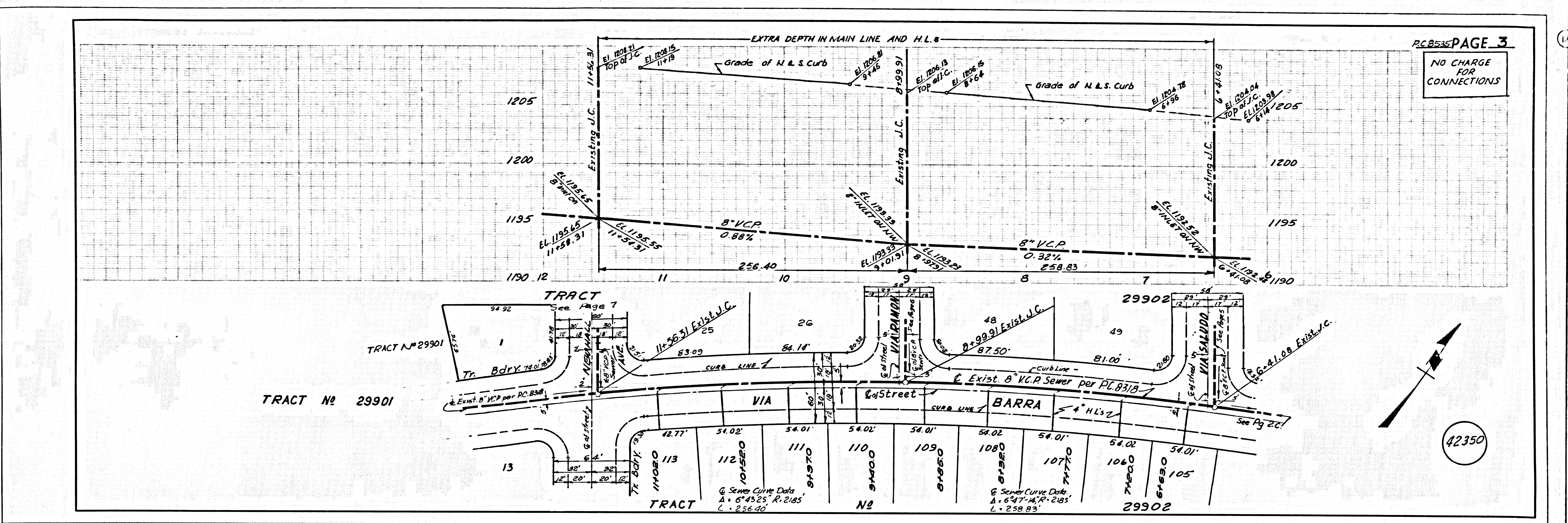
NOTES:  
 GRADES TO WHICH THIS IMPROVEMENT IS TO BE CONSTRUCTED ARE SHOWN ON PLANS AND PROFILE. GRADE POINTS FOR TOP OF CURB, CENTER LINE OF STREETS, OR CENTER LINE OF ALLEYS ARE SHOWN BY CIRCLES ON PROFILE. AT ALL POINTS BETWEEN DESIGNATED POINTS THE GRADE SHALL BE ESTABLISHED SO AS TO CONFORM TO A STRAIGHT LINE DRAWN BETWEEN SAID DESIGNATED POINTS. ELEVATIONS ARE IN FEET ABOVE U.S.C. & G.S. SEA LEVEL DATUM OF 1929.  
 THESE PLANS ARE CONFORMING TO THE STANDARD SPECIFICATIONS FOR PUBLIC WORKS CONSTRUCTION AND SHALL BE PROTECTED BY THE PRESENCE OF THE COUNTY ENGINEER.  
 BEFORE WORK CAN BE STARTED, THE CONTRACTOR MUST OBTAIN A PERMIT TO EXCAVATE IN COUNTY STREETS FROM THE L.A. COUNTY ROAD DEPT., DISTRICT OFFICE NO. 1, AND PAY A FEE TO THE COUNTY ENGINEER, ROOM 238, COUNTY ENGINEERING, 120 SOUTH SPRING STREET, LOS ANGELES, CALIFORNIA. REGIONAL OFFICE, SUFFICIENT TO COVER THE COST OF CONSTRUCTION INSPECTION AND RECORD PLANS.  
 IF WORK IS TO BE DONE IN A STATE HIGHWAY, A PERMIT MUST BE OBTAINED FROM THE STATE OF CALIFORNIA, DIVISION OF HIGHWAYS, 120 SOUTH SPRING STREET, LOS ANGELES, CALIFORNIA.  
 THIS NOTE APPLIES TO ALL PAGES.

COUNTY OF LOS ANGELES, CALIFORNIA  
 JOHN A. LAMBE, COUNTY ENGINEER J. D. PARKHURST, CHIEF ENGINEER  
 CO. SAN. DIST. NO. 82  
 APPROVED BY: *G. J. Sikand* 11-570 APPROVED BY: *J. D. Parkhurst*  
 REGISTERED PROFESSIONAL ENGINEER REGISTERED PROFESSIONAL ENGINEER  
 CHECKED BY: *Philip J. ...* 11-570  
 REG. C. E. NO. 14390

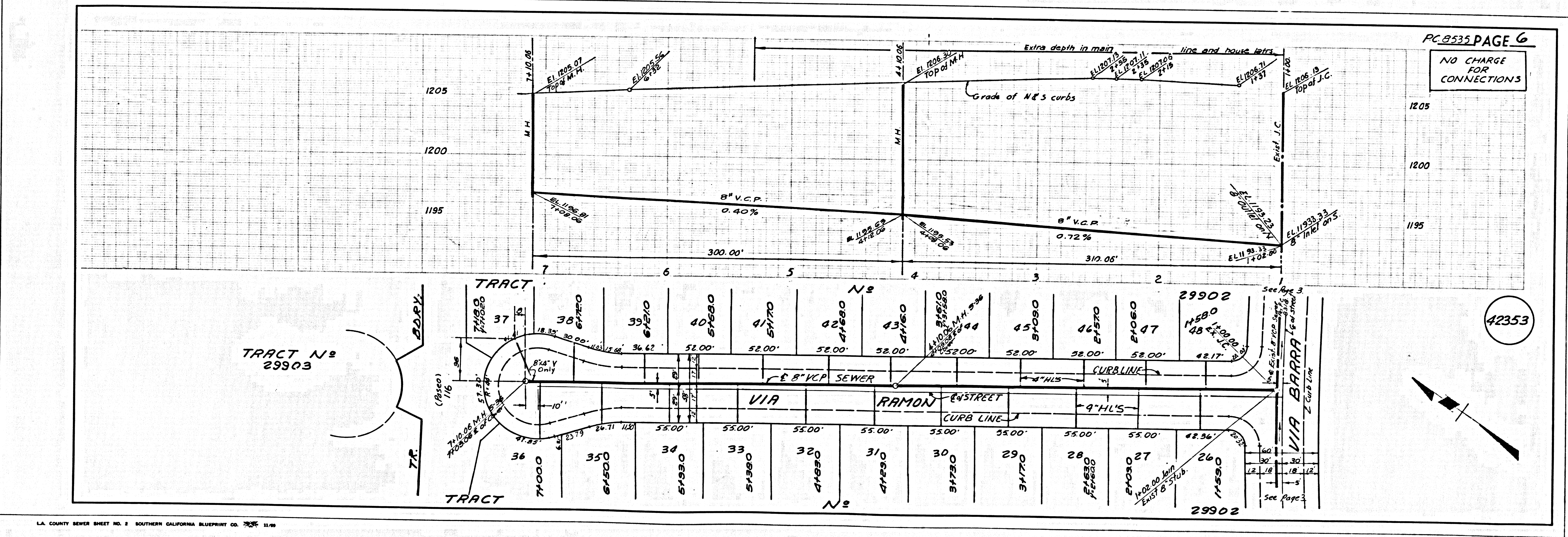
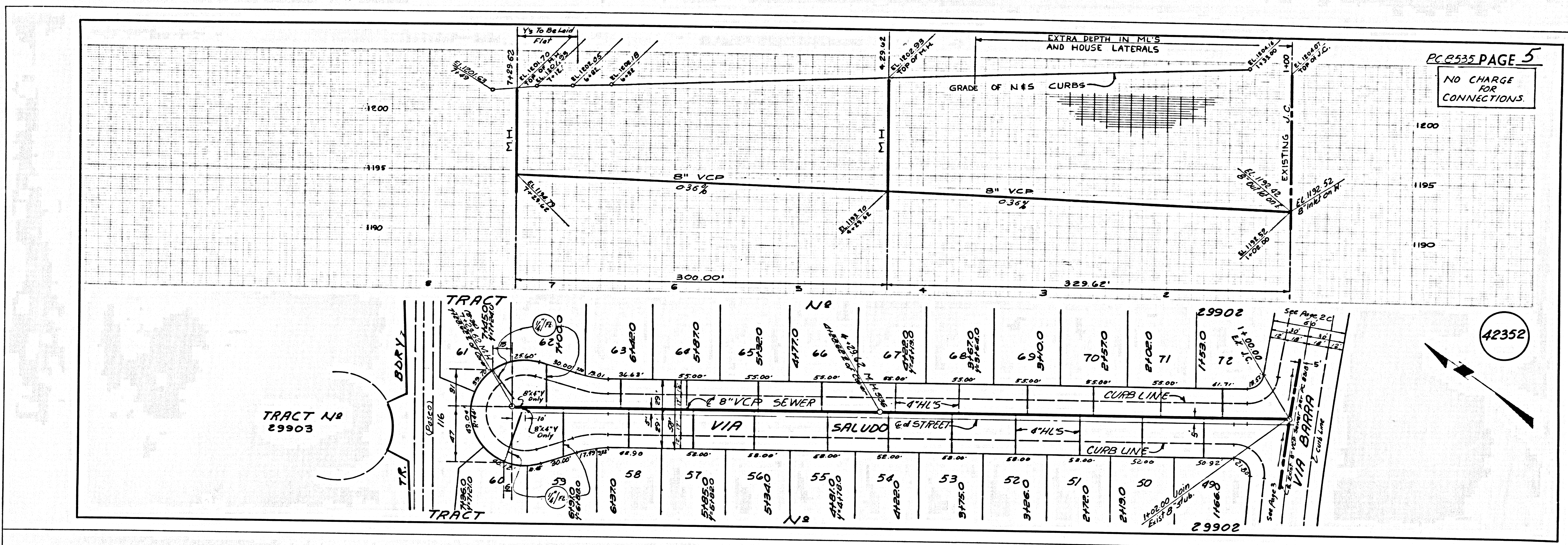
42348

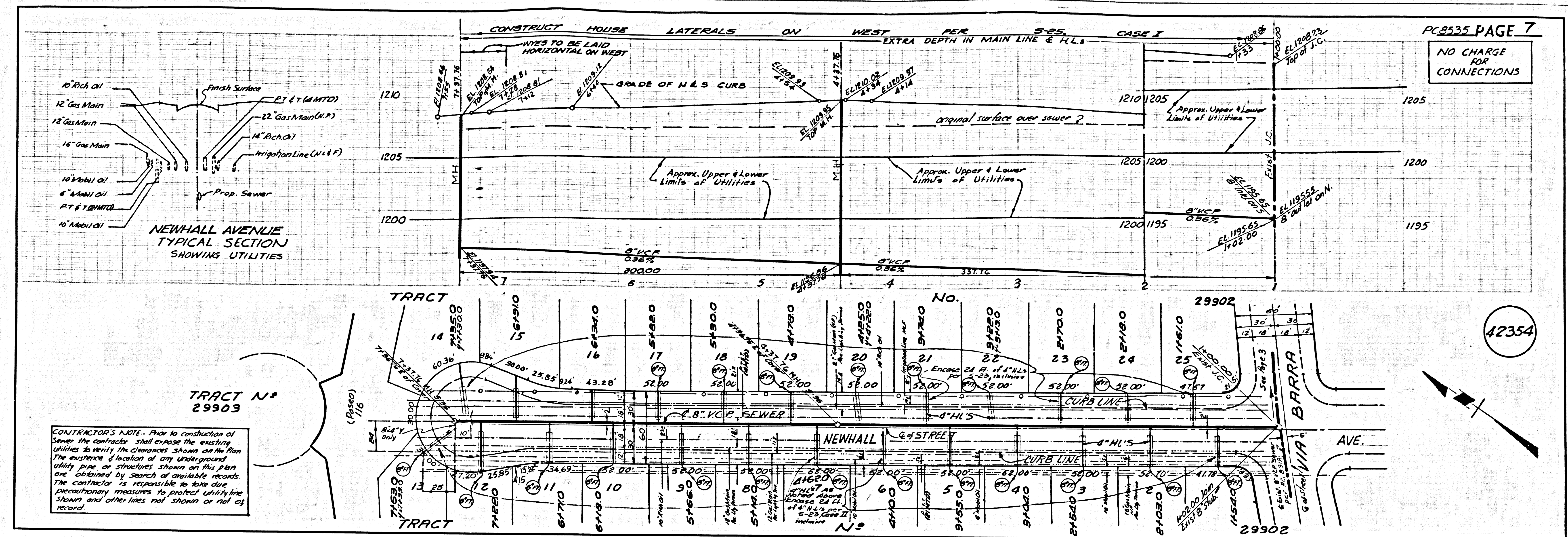
COLLECT CHARGES  
 AS INDICATED





L.A. COUNTY SEWER SHEET NO. 3 SOUTHERN CALIFORNIA BLUEPRINT CO. 7/57 11/59





PC 8535 PAGE 7

NO CHARGE FOR CONNECTIONS

42354

PAGE