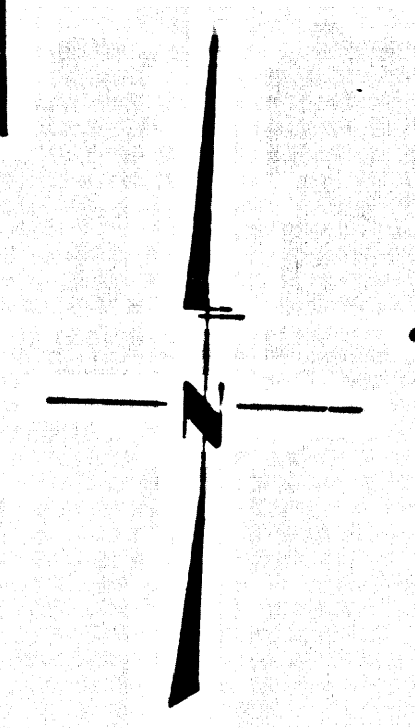
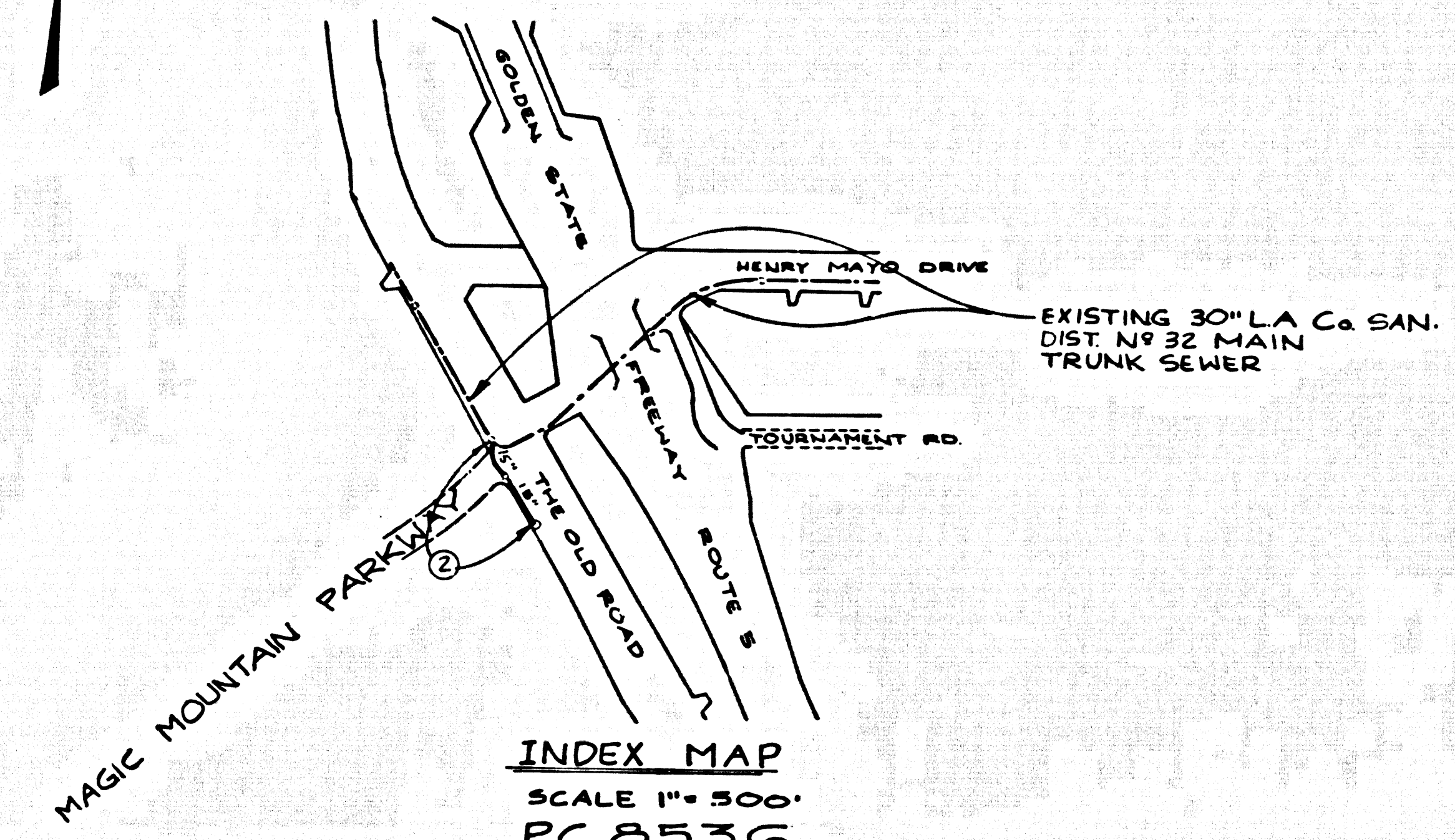


B.M. BL 1774 ELEV. 1078.072
 BORN TAG SEC TRAFFIC ISL 15' E N 4
 S 4' D W HENRY MAYO DR. 4' FOOT
 W GOLDEN ST. F.W.Y. BRIDGE
 W 53-1-14.5

NEWHALL QUAD. 1965



NOTE: NUMBERS IN CIRCLES INDICATES PAGE NUMBER.



INDEX MAP
 SCALE 1" = 500'
 PC 8536

NOTICE TO CONTRACTOR

The existence and location of any underground utility pipes or structures shown on these plans are obtained by a search of the available records. To the best of my knowledge there are no existing utilities except as shown on these plans. The contractor is required to take due precautionary measures to protect the utility lines shown and any other lines not of record or not shown on these plans.

Ronald R. Horn
 RCE 1673

COLLECT CHARGES AS INDICATED

**DOUBLE SCALE
 NEWHALL BLDG. DIST. NO. 82**

- HOUSE LATERALS TO BE CONSTRUCTED WITH INVERTS AT PROPERTY LINE 4 FEET BELOW FINISH GRADE.
- POUR STAIRS ON THE PROPERTY LINE OR PROPERTY LINES PRODUCED AT RIGHT ANGLES TO THE SEWER LINE AT THE CENTER LINE OF EACH MANHOLE.
- NO REPRESENTATIVE OF THE COUNTY ENGINEER WILL SURVEY OR LAY OUT ANY PORTION OF THE WORK.
- THE PRIVATE ENGINEER SHALL FURNISH THE COUNTY ENGINEER WITH GRADE SHEETS AND STATIONING FOR ALL HOUSE LATERALS AND "T" OR "Y" BRANCHES AND SHALL PROVIDE STAIRS FOR THESE AT THESE PROPER LOCATIONS WITH STATIONING PLAINLY MARKED. ALL HOUSE LATERALS SHALL BE CONSTRUCTED IN A STRAIGHT ALIGNMENT AT RIGHT ANGLES FROM THE MAIN LINE SEWER EXCEPT AS SHOWN ON THE PLANS. HOUSE LATERALS FROM CHIMNEYS SHALL NOT HAVE AN ANGLE OF LESS THAN 45° WITH THE MAIN LINE SEWER AND CHANGE IN ALIGNMENT SHALL BE REQUESTED BY WRITING IN THE PRIVATE SPECIFICATIONS.
- THE PRIVATE ENGINEER SHALL FURNISH THE HOUSE LATERAL DEPTH AT THE PROPERTY LINE BELOW THE FINISH GRADE FOR EACH HOUSE LATERAL ON THE GRADE SHEET.
- NO DITCHES SHALL BE MADE IN THESE PLANS WITHOUT THE APPROVAL OF THE COUNTY ENGINEER.
- THE CONTRACTOR SHALL NOTIFY THE CONSTRUCTION DIVISION BY TELEPHONE, BARRISON 9-677, EXT. 8128, AT LEAST TWENTY-FOUR HOURS BEFORE STARTING A WORK UNDER THIS CONTRACT.
- ALL STRUCTURES SHALL BE EITHER BRICK MANHOLES PER S-1 OR PRECAST CONCRETE MANHOLES PER S-26, EXCEPT AS NOTED.
- "T" OR "Y" BRANCHES MAY BE USED FOR CONNECTIONS TO MAINLINE SEWERS EXCEPT AS NOTED.
- MANHOLE TOPS IN UNIMPROVED RIGHTS OF WAY TO BE 6 1/2 INCHES ABOVE FINISHED GRADE.
- USE EXTRA STRENGTH PIPE, ALL PIPE IS STANDARD UNLESS EXCEPT AS NOTED.
- VERTICAL CLAY PIPE JOINTS SHALL BE TYPE "B", "T", OR "U" PER STANDARD SPECIFICATIONS SECTION 206.2.
- IF A POWER POLE IS WITHIN THREE FEET OF THE SEWER, THE SEWER SHALL BE ENCASED, PER S-28, TWO FEET ON EACH SIDE FROM THE POINT OF INTERFERENCE.
- IF DURING THE COURSE OF CONSTRUCTION IT IS DETERMINED THAT THERE IS LESS THAN FOUR FEET OF COVER OVER THE TOP OF A MAIN LINE OR HOUSE LATERAL V.C.P. SEWER WHICH IS NOT INDICATED ON THE PLANS, THE PIPE SHALL BE ENCASED PER S-28, UNLESS OTHERWISE APPROVED BY THE COUNTY ENGINEER.
- RESURFACE ALL TRENCHES WITHIN PAVED AREAS TO MEET L.A. COUNTY ROAD DEPT. OR CALIFORNIA STATE HIGHWAY REQUIREMENTS IN ACCORDANCE WITH PERMITS.
- SEWER TO BE SET FOR GRADES PER SECTION 206.2.1.2 OF THE STANDARD SPECIFICATIONS, REGARDING SAFETY CURVES.
- REFER TO SECTION 206.2.1 OF THE STANDARD SPECIFICATIONS, REGARDING SAFETY CURVES.
- ALL JOINTS BETWEEN CAST IRON PIPE AND VITRIFIED CLAY PIPE SHALL BE MADE WITH A RUBBER GREESE JOINT, TYPE "C" OR "D", WITH BUSHING IF NECESSARY PER STANDARD SPECIFICATIONS, SECTION 206.2.

THE FOLLOWING LATEST REVISED STANDARD PLANS ON FILE IN THE OFFICE OF THE COUNTY ENGINEER SHALL APPLY IN THE CONSTRUCTION OF THIS PROJECT.

SEWER	51
SEWER PUBLIC SAFETY REQUIREMENTS	52
BRICK MANHOLE	53
NON-REINFORCED PRECAST CONCRETE MANHOLE	54
REINFORCED PRECAST CONCRETE MANHOLE	55
MANHOLE TRAPS AND COVERS	56
STANDARD MANHOLE STEP	57
RECORD FOR SEWER PIPE	58
CALLING AND ENCASING	59
WYE OR THE SUPPORT	60
ALUMINUM FINISH TRIM	61
CHIMNEY PIPE, AND BASE	62
LOCKING MANHOLE FRAME & COVER	63

County Sanitation Districts shall be notified prior to the following work that involves underground utility lines (Phone 237-1053 or 444-6699) according to the contract.

No connections for the disposal of industrial wastes shall be made to sewer systems on these drawings without written authorization from the Chief Engineer and General Manager of the County Sanitation Districts.

PROFILE, ALIGNMENT AND GRADE OF
SANITARY SEWERS P.C. 8536
 PAGE 1

CONSTRUCTED IN
**THE OLD ROAD
 AT MAGIC MOUNTAIN PARKWAY**
 PRIVATE CONTRACT NO. 8536

W.S. 63
 1 SHEET OF 2 PAGES
 SCALE: VERT. 1" = 4' SEPT. 1970
 HORIZ. 1" = 40'
 PREPARED IN THE OFFICES OF
 SIKAND ENGINEERING ASSOCIATES, INC. 42092
 15205 BURBANK BOULEVARD
 VAN NUYS, CALIFORNIA 91401 787-8550
 By: Ronald R. Horn
 REG. C. E. NO. 16912

NOTE: GRADES TO WHICH THE IMPROVEMENT IS TO BE CONSTRUCTED ARE SHOWN ON PLANS AND PROFILES. GRADE POINTS FOR TOP OF CURB, CENTER LINE OF STREETS, OR CENTER LINE OF ALLEYS ARE SHOWN BY CIRCLES ON PROFILES. ALL POINTS BETWEEN INDICATED POINTS THE GRADE SHALL BE ESTABLISHED SO AS TO CONFORM TO A STRAIGHT LINE DRAWN BETWEEN SAID DESIGNATED POINTS. ELEVATIONS ARE IN FEET ABOVE M.S.L. & 6 1/2 INCHES ABOVE FINISH GRADE.

WORK SHALL BE CONSTRUCTED ACCORDING TO THE STANDARD SPECIFICATIONS FOR PUBLIC WORKS (SECTION 206.2) & COUNTY ENGINEER SPECIAL PROVISIONS FOR THE CONSTRUCTION OF SEWERAGE SYSTEMS (SECTION 206.2) AND SHALL BE PROSECUTED ONLY IN THE PRESENCE OF THE COUNTY ENGINEER.

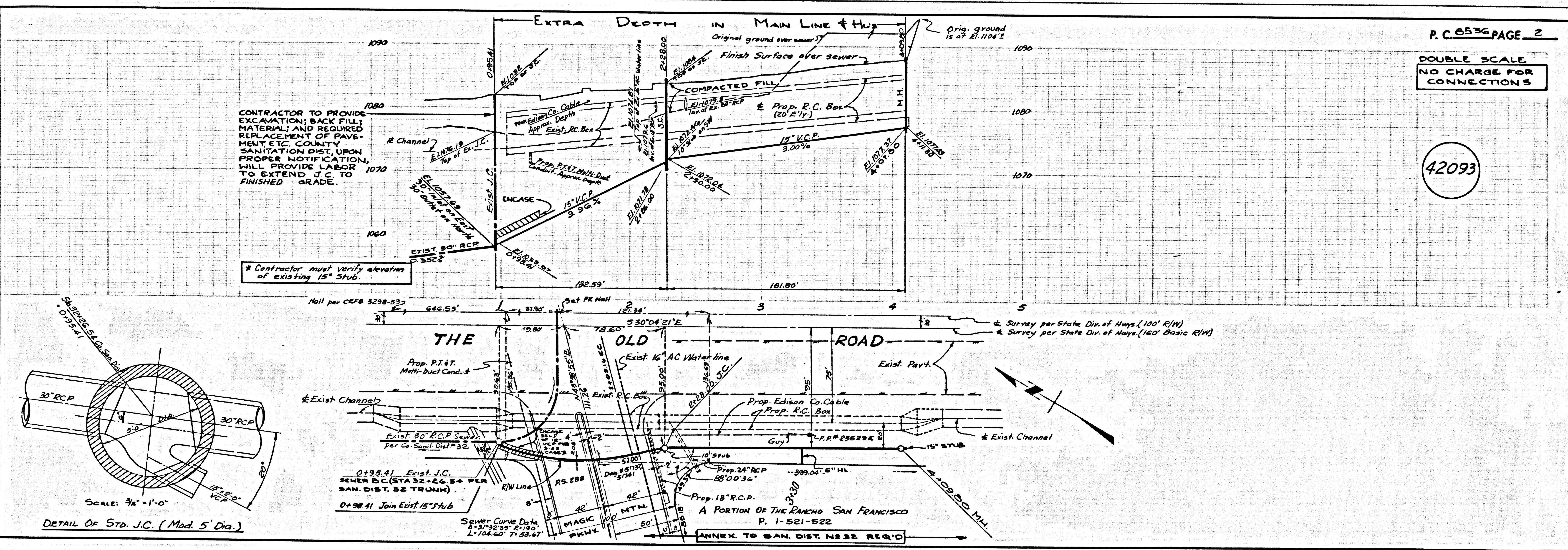
BEFORE WORK CAN BE STARTED, THE CONTRACTOR MUST OBTAIN A PERMIT TO EXCAVATE IN COUNTY STREETS FROM THE L. A. COUNTY ROAD DEPT., DISTRICT OFFICE NO. 25, AND PAY A FEE TO THE COUNTY ENGINEER, ROOM 200, COUNTY ENGINEERING BARRISON, THE WEST BOWLING STREET OR... (PHONE 237-1053) REGIONAL OFFICE, SUPPORT TO COVER THE COST OF CONSTRUCTION INSPECTION AND RECORD PLANS.

APPROVAL OF THIS PLAN BY THE COUNTY OF LOS ANGELES DOES NOT CONSTITUTE A REPRESENTATION AS TO THE ACCURACY OF THE LOCATION OF OR THE EXISTENCE OR NON-EXISTENCE OF ANY UNDERGROUND UTILITY PIPE, OR STRUCTURE WITHIN THE LIMITS OF THIS PROJECT. THIS NOTE APPLIES TO ALL PAGES.

IF WORK IS TO BE DONE IN A STATE HIGHWAY, A PERMIT MUST BE OBTAINED FROM THE STATE OF CALIFORNIA, DIVISION OF HIGHWAY, 138 SOUTH SPRING STREET, LOS ANGELES, CALIFORNIA.

COUNTY OF LOS ANGELES, CALIFORNIA
 JOHN A. LAMBIE, COUNTY ENGINEER J. D. PARKHURST, CHIEF ENGINEER
 APPROVED BY: [Signature] 10/1/70 APPROVED BY: [Signature]
 REGIONAL ENGINEER STATE OFFICE ENGINEER
 CHECKED BY: [Signature] 9-24-70
 DATE
 REG. C. E. NO. 45390

J.N. 0370.73



P.C. 8536 PAGE 2
 DOUBLE SCALE
 NO CHARGE FOR CONNECTIONS

42093