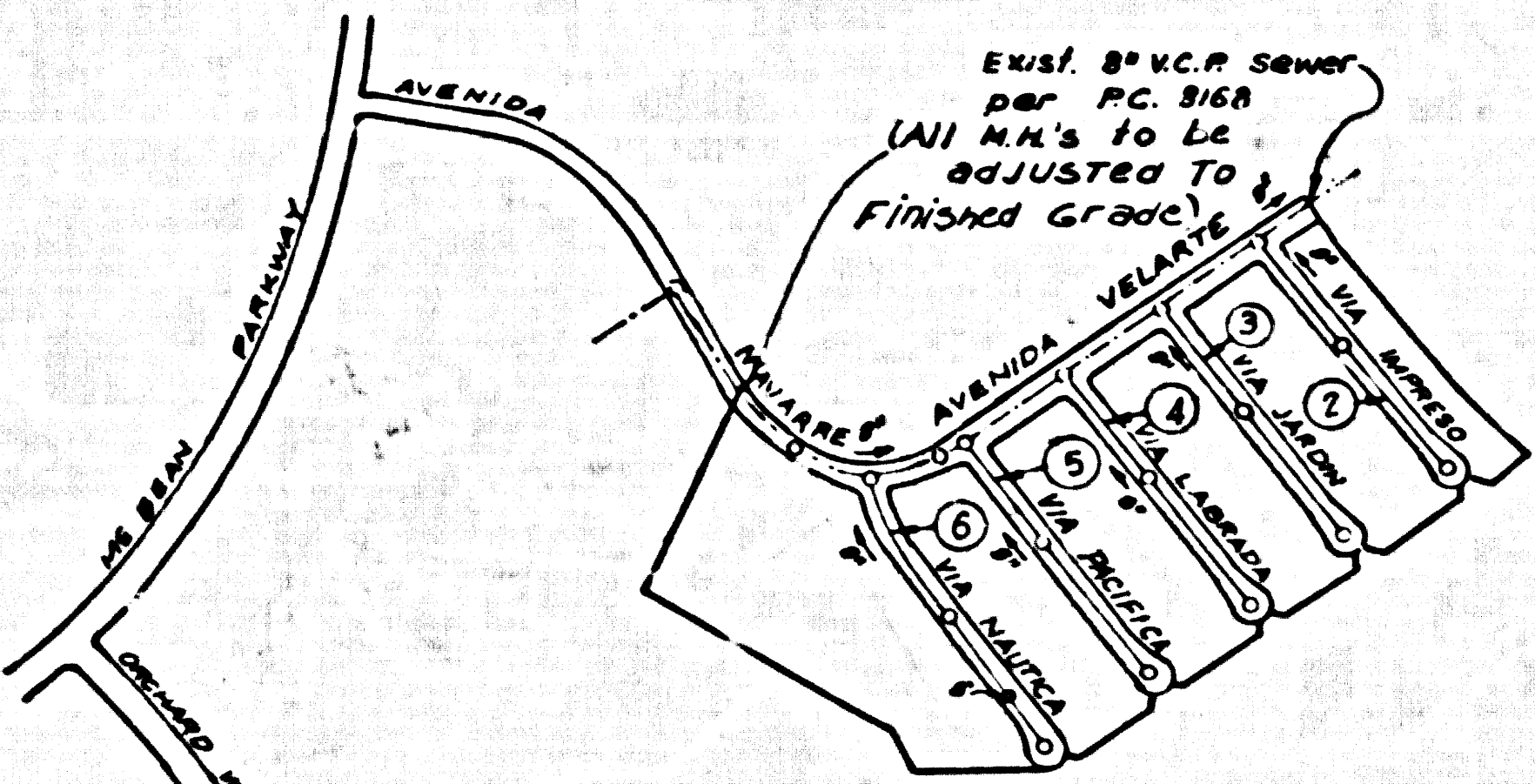


B.M. 01608 ELEV. 1216.34
 U.S.C. 665. Mon. 5. emp. bridge 53-14
 over Placerita Creek 3 N. of S.
 emp. Ch. 10. 1st & 2nd Tr. 1930 ad.
 61.0 M.N. of Newhall Sta. M.C. (1930 1955)
 Newhall QUAD. 19 55.



NOTE: Number in circles indicate page numbers on sewer plans.

INDEX MAP
 SHEET NO. 1
 P.C. 8540
 TRACT NO. 29903

Full compliance with Section 306-1.9.3 of the Special Provisions will be required for back fill in Streets. Certification of back fill compaction and sand equivalents by a qualified, Registered Testing Laboratory shall be provided by the Permittee prior to the issuance of a Certificate of Partial Acceptance.

REVISION
 Page 01 Revised Mainline alignment. Added MH & VCP Sewer @ Sta. 4+42.14. Deleted 6" Laterals & W-12. Added 4" laterals on S.W. side. Revised Index map.
 APPROVED: *Ronald P. Horn* 1976 12/16
 OFFICE OF COUNTY ENGINEER R.C.E. DATE

Contractor must adjust all existing manholes to finished grade, within Tr. No. 29903 in Avenida Navarre & Avenida Velarte

NOTICE TO CONTRACTOR
 The existence and location of any underground utility pipes or structures shown on these plans are obtained by a search of the available records. To the best of my knowledge there are no existing utilities except as shown on these plans. The contractor is required to take due precautionary measures to protect the utility lines shown and any other lines not of record or not shown on these plans.
Ronald P. Horn 12/16
 R.C.E.

COLLECT CHARGES AS INDICATED

NEWHALL BLDG. DIST. NO. 82

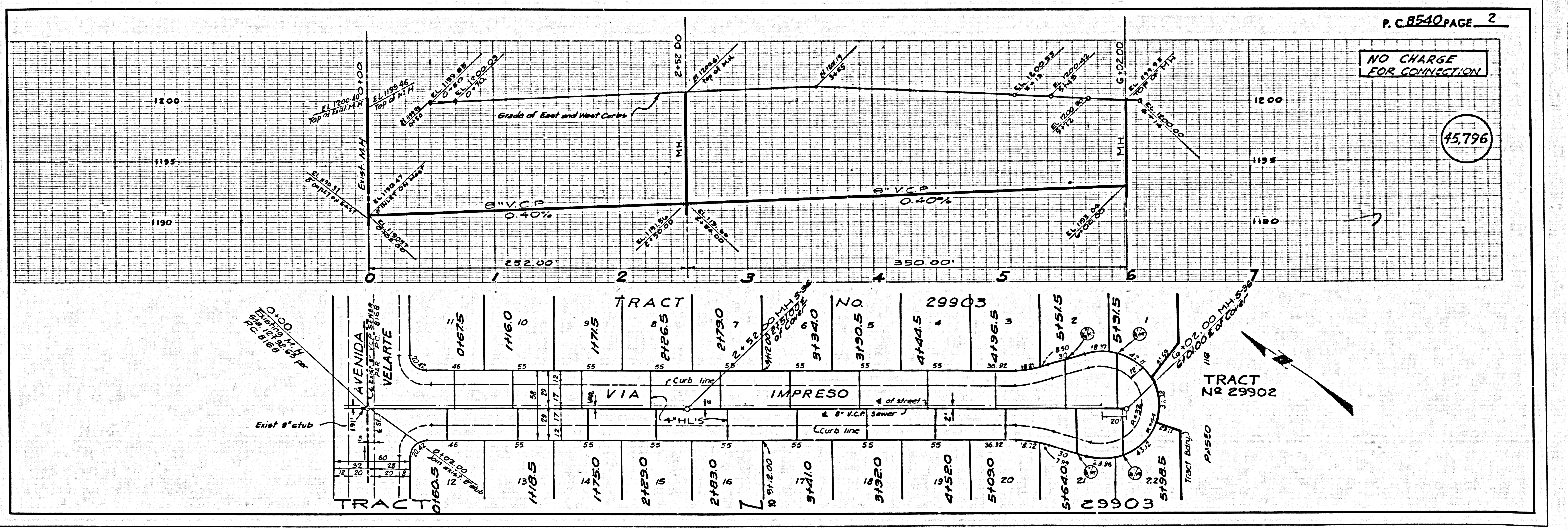
PROFILE, ALIGNMENT AND GRADE OF
 SANITARY SEWERS P.C. 8540
 CONSTRUCTED IN PAGE 1
 TRACT No. 29903

PRIVATE CONTRACT NO. 8540

W.S. 62
 3 SHEETS; 6 PAGES
 SCALE: VERT. 1"=4' HORIZ. 1"=40' AUGUST, 1971
 PREPARED IN THE OFFICES OF
 SIKANO ENGINEERING ASSOCIATES
 15205 Burbank Blvd. Van Nuys, Calif. 91411
 787-8550
 By: *Ronald P. Horn*
 REG. C. E. NO. 16313

- NOTES:
- HOUSE LATERALS TO BE CONSTRUCTED WITH INVERTS AT PROPERTY LINE & FEET BELOW CURB GRADE EXCEPT AS NOTED.
 - HOUSE STAKES ON THE PROPERTY LINE OR PROPERTY LINES PRODUCED AT RIGHT ANGLES TO THE SEWER LINE AT THE CENTER LINE OF EACH MANHOLE.
 - NO REPRESENTATIVE OF THE COUNTY ENGINEER WILL SURVEY OR LAY OUT ANY PORTION OF THE WORK.
 - THE PRIVATE ENGINEER SHALL FURNISH THE COUNTY ENGINEER WITH "I" AND "T" SHEETS AND STATIONING FOR ALL HOUSE LATERALS AND "T" OR "T" BRANCHES AND SHALL PROVIDE STAKES FOR THEM AT THESE PROPER LOCATIONS WITH STATIONING PLAINLY MARKED. ALL HOUSE LATERALS SHALL BE CONSTRUCTED IN A STRAIGHT ALIGNMENT AT RIGHT ANGLES FROM THE MAIN LINE SEWER EXCEPT AS SHOWN ON THE PLANS. HOUSE LATERALS FROM CHIMNEYS SHALL NOT HAVE AN ANGLE OF LESS THAN 45° WITH THE MAIN LINE SEWER. ANY CHANGE IN ALIGNMENT SHALL BE REQUESTED IN WRITING BY THE PRIVATE ENGINEER.
 - THE PRIVATE ENGINEER SHALL FURNISH THE HOUSE LATERAL DEPTH AT THE PROPERTY LINE BELOW THE TOP OF CURB ELEVATION FOR EACH HOUSE LATERAL ON THE GRADE SHEET.
 - NO REVISIONS SHALL BE MADE IN THESE PLANS WITHOUT THE APPROVAL OF THE COUNTY ENGINEER.
 - THE CONTRACTOR SHALL NOTIFY THE CONSTRUCTION DIVISION BY TELEPHONE, MADISON 6-6747, EXT. 8128, AT LEAST TWENTY-FOUR HOURS BEFORE STARTING ANY WORK UNDER THIS CONTRACT.
 - ALL STRUCTURES SHALL BE EITHER BRICK MANHOLES PER S-2 OR PRECAST CONCRETE MANHOLES PER S-92.
 - "T" OR "T" BRANCHES MAY BE USED FOR CONNECTIONS TO MAINLINE SEWERS EXCEPT AS NOTED.
 - ALL STRUCTURES SHALL BE EITHER BRICK MANHOLES PER S-2 OR PRECAST CONCRETE MANHOLES PER S-92.
 - USE EXTRA STRENGTH PIPE. ALL PIPE IS STANDARD DEPTH EXCEPT AS NOTED.
 - VITRIFIED CLAY PIPE JOINTS SHALL BE TYPE "B", "C", OR "D" PER STANDARD SPECIFICATIONS SECTION 306-2.
 - IF A POWER POLE IS WITHIN THREE FEET OF THE SEWER, THE SEWER SHALL BE ENCASED, PER S-25, TWO FEET ON EACH SIDE FROM THE POINT OF INTERFERENCE.
 - IF DURING THE COURSE OF CONSTRUCTION IT IS DETERMINED THAT THERE IS LESS THAN FOUR FEET OF COVER OVER THE TOP OF A MAIN LINE OR HOUSE LATERAL V. J. SEWER WHICH IS NOT INDICATED ON THE PLANS, THE PIPE SHALL BE ENCASED PER S-25, UNLESS OTHERWISE APPROVED BY THE COUNTY ENGINEER.
 - RESURFACE ALL TRENCHES WITHIN PAVED AREAS TO MEET L.A. COUNTY ROAD DEPT. OR CALIFORNIA STATE HIGHWAY REQUIREMENTS IN ACCORDANCE WITH PERMITS.
 - SEWERS TO BE TESTED FOR LEAKAGE PER SECTION 204-2.1.7 OF THE STANDARD SPECIFICATIONS.
 - REFER TO SECTION 7-16.1.1 OF THE STANDARD SPECIFICATIONS, REGARDING SAFETY CONES.
 - ALL JOINTS BETWEEN CAST IRON PIPE AND VITRIFIED CLAY PIPE SHALL BE MADE WITH A RUBBER SLEEVE JOINT, TYPE "C" OR "D", FIFTH EDITION IF NECESSARY PER STANDARD SPECIFICATIONS, SECTION 306-2.
 - INDICATED HOUSE LATERAL TO BE CONSTRUCTED WITH A RISE OF 1/4" PER FOOT TO PROPERTY LINE. THE FOLLOWING LATEST REVISED STANDARD PLANS ON FILE IN THE OFFICE OF THE COUNTY ENGINEER SHALL APPLY IN THE CONSTRUCTION OF THIS PROJECT.
- | | |
|---|------|
| MINIMUM PUBLIC SAFETY REQUIREMENTS | S-2 |
| BRICK MANHOLES | S-92 |
| NON-REINFORCED PRECAST CONCRETE MANHOLES | S-92 |
| CAST IRON PIPE AND BRANCH | S-97 |
| REINFORCED PRECAST CONCRETE PIPE AND BRANCH | S-97 |
| STANDARD MANHOLE DEW | S-17 |
| SEWING FOR SEWER PIPE | S-21 |
| CRACKING AND ENCASEMENT | S-25 |
| 18" OR 24" DEW | S-28 |
| AUTOMATIC TRENCH WARNING | S-28 |
- County Sanitation Districts shall be notified prior to the following so that required inspections can be made (Phone 347-4025 or 638-1181)
- Acceptance of the project.
- In connection for the disposal of industrial wastes shall be made as shown on these drawings without written permission from the Chief Engineer and General Manager of the County Sanitation Districts.

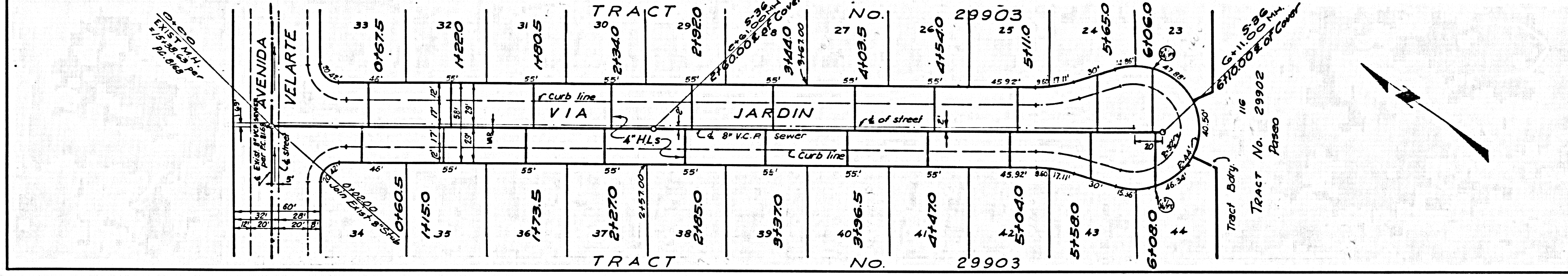
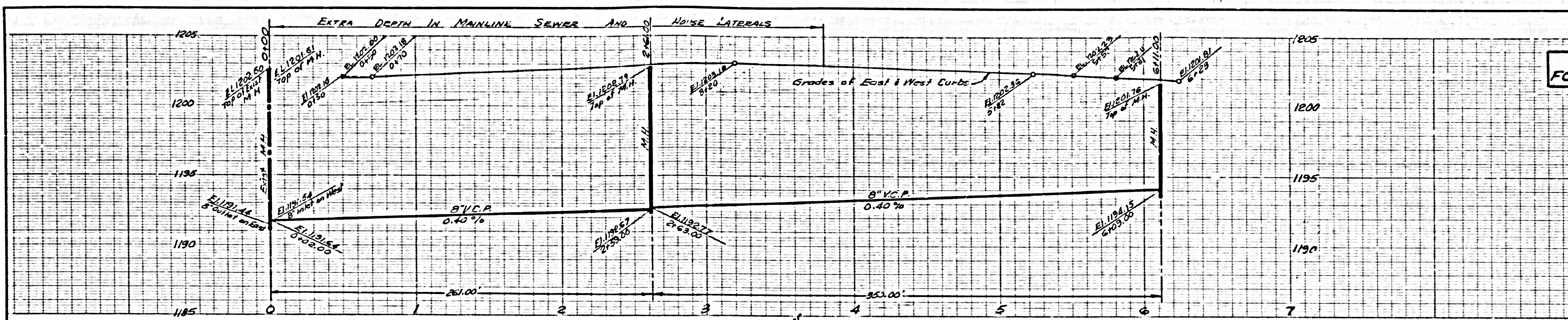
NOTE:
 GRADES TO WHICH THIS IMPROVEMENT IS TO BE CONSTRUCTED ARE SHOWN ON PLANS AND PROFILE. GRADE POINTS FOR TOP OF CURB, CENTER LINE OF STREET, OR CENTER LINE OF ALLEY ARE SHOWN BY CIRCLES ON PROFILE. ALL POINTS BETWEEN DESIGNATED POINTS THE GRADE SHALL BE ESTABLISHED AS TO CONFORM TO A STRAIGHT LINE DRAWN BETWEEN SAID DESIGNATED POINTS. ELEVATIONS ARE IN FEET ABOVE U.S.C. & G.S. MEAN LEVEL DATUM OF 1929.
 WORK SHALL BE CONSTRUCTED ACCORDING TO THE STANDARD SPECIFICATIONS FOR PUBLIC WORKS CONSTRUCTION, 1970 EDITION WITH (787 SUPPLEMENT) AND COUNTY STANDARD SPECIFICATIONS FOR THE CONSTRUCTION OF SANITARY SEWER LINES APRIL, 1971 (1971 SUPPLEMENT) AND COUNTY STANDARD SPECIFICATIONS FOR THE CONSTRUCTION OF SANITARY SEWER LINES APRIL, 1971 (1971 SUPPLEMENT).
 THE PRESENCE OF THE COUNTY ENGINEER BEFORE WORK CAN BE STARTED. THE CONTRACTOR MUST OBTAIN A PERMIT TO EXCAVATE IN COUNTY PROPERTY FROM THE L.A. COUNTY ROAD DEPT., DISTRICT OFFICE NO. 8, AND PAY A FEE TO THE COUNTY ENGINEER, ROOM 15, 5150 S. IMPERIAL AVENUE, DOWNEY, CALIF. 90241. REGIONAL OFFICE, SUITE 107 OF THE COST OF CONSTRUCTION INSPECTION AND SECOND PLANS.
 APPROVAL OF THIS PLAN BY THE COUNTY OF LOS ANGELES DOES NOT CONSTITUTE A REPRESENTATION AS TO THE ACCURACY OF THE LOCATION OF OR THE EXISTENCE OR NON-EXISTENCE OF ANY UNDERGROUND UTILITY PIPE, OR STRUCTURE WITHIN THE LIMITS OF THIS PROJECT. THIS NOTE APPLIES TO ALL PAGES.
 IF WORK IS TO BE DONE IN A STATE HIGHWAY, A PERMIT MUST BE OBTAINED FROM THE STATE OF CALIFORNIA, DIVISION OF HIGHWAYS, 120 SOUTH SPRING STREET, LOS ANGELES, CALIFORNIA.
 COUNTY OF LOS ANGELES, CALIFORNIA
 HARVEY I. BRANDT COUNTY ENGINEER J. D. PARKHURST, CHIEF ENGINEER
 APPROVED BY *Ronald P. Horn* 8-18-71 APPROVED BY *J. D. Parkhurst*
 DIVISION ENGINEER DATE OFFICE ENGINEER
 CHECKED BY *R. P. Horn* 8-18-71
 DATE
 REG. C. E. NO. 16313



NO CHARGE FOR CONNECTION
 45,796

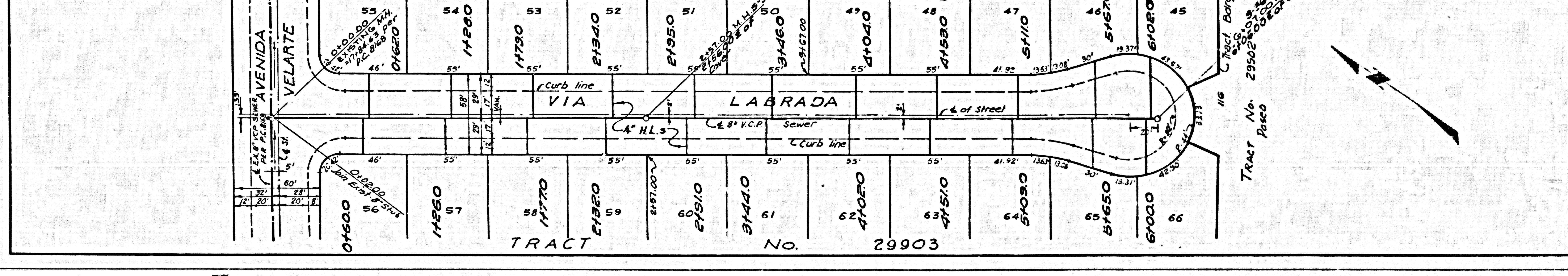
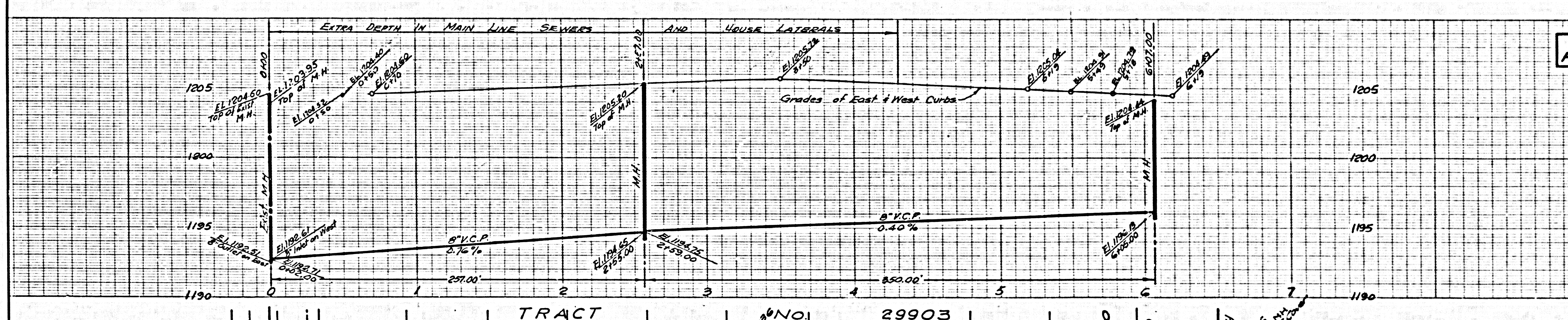
NO CHARGE FOR CONNECTION

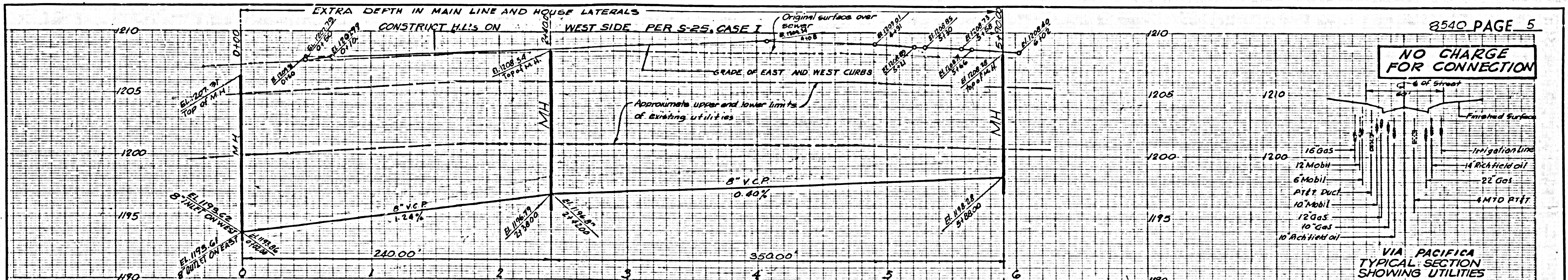
45,797



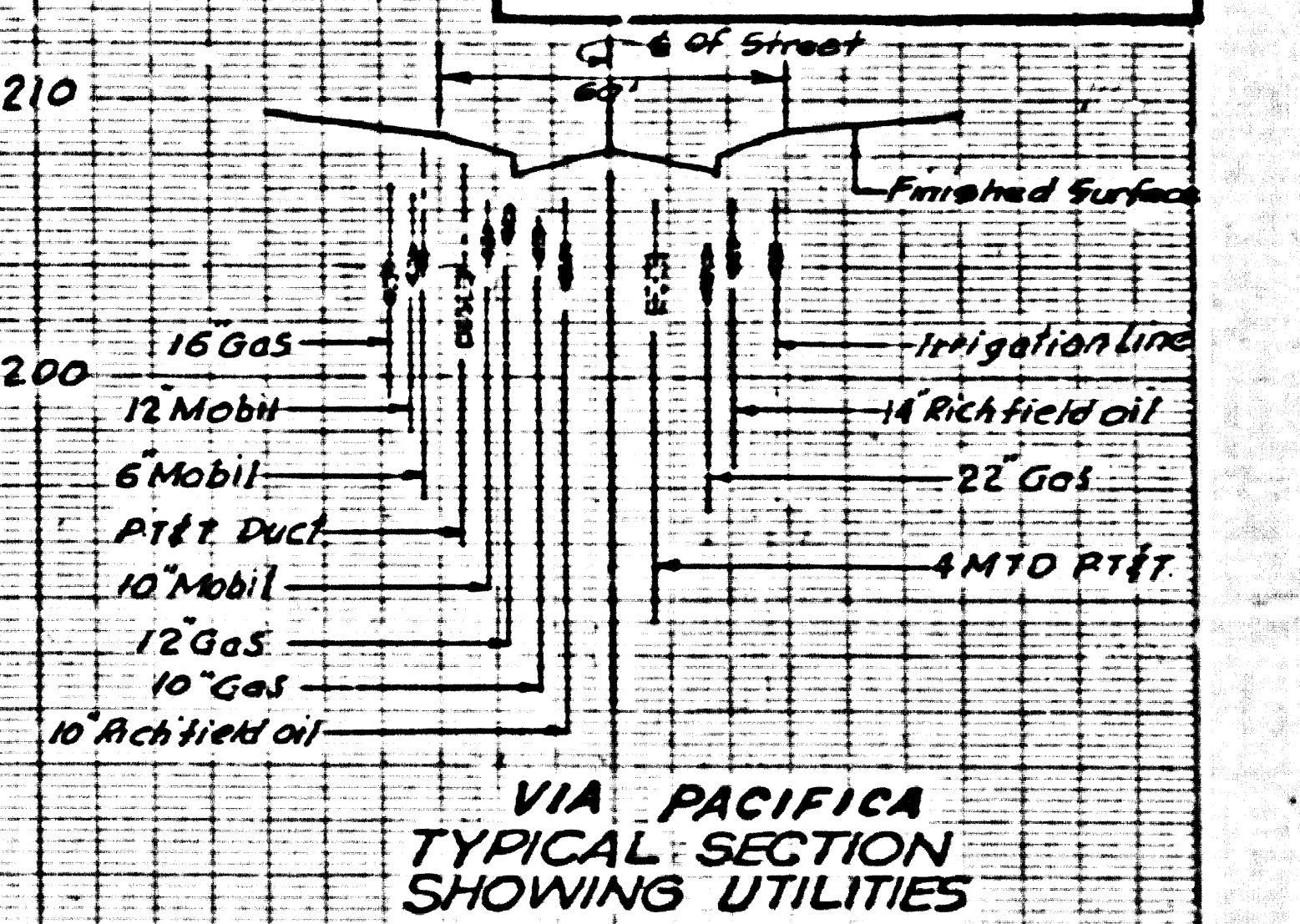
NO CHARGE FOR CONNECTION

45,798

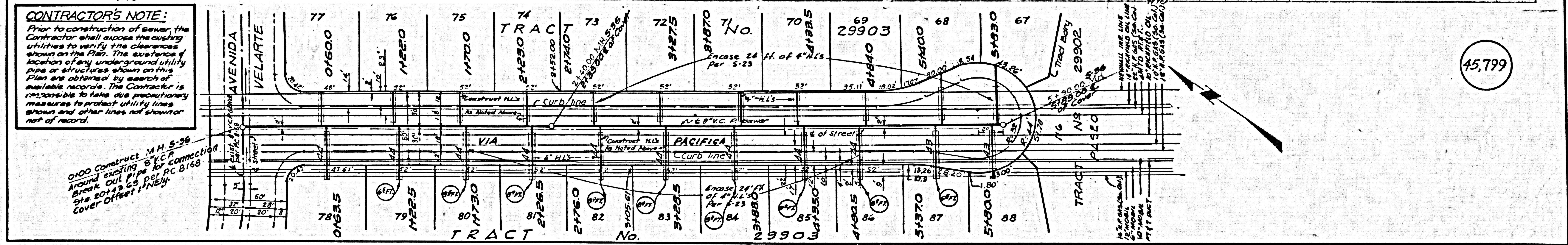




NO CHARGE FOR CONNECTION

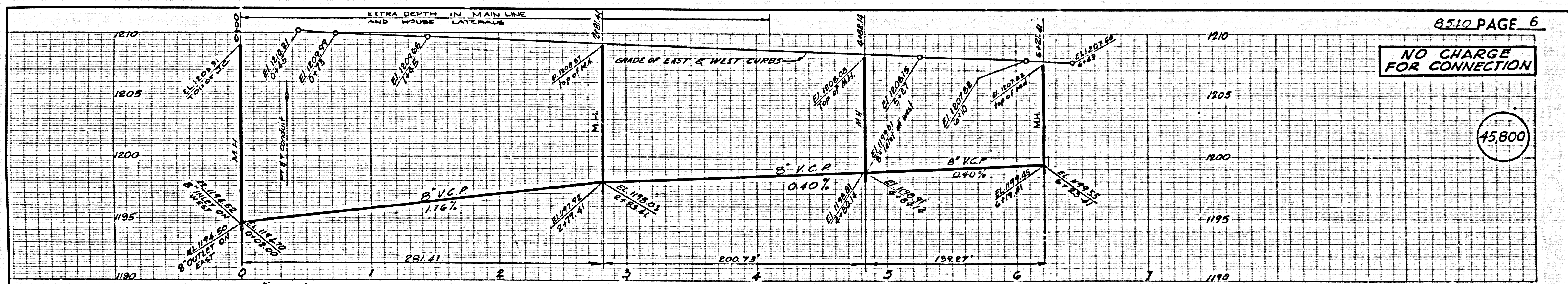


CONTRACTOR'S NOTE:
 Prior to construction of sewer, the Contractor shall expose the existing utilities to verify the clearance shown on the Plan. The existence of location of any underground utility pipe or structures shown on this Plan are obtained by search of available records. The Contractor is responsible to take due precautionary measures to protect utility lines shown and other lines not shown or not of record.



0100 CONSTRUCT M.H. S-36 AROUND EXISTING 8\"/>

45,799



NO CHARGE FOR CONNECTION

0100 CONSTRUCT M.H. S-36 AROUND EXISTING 8\"/>

45,800