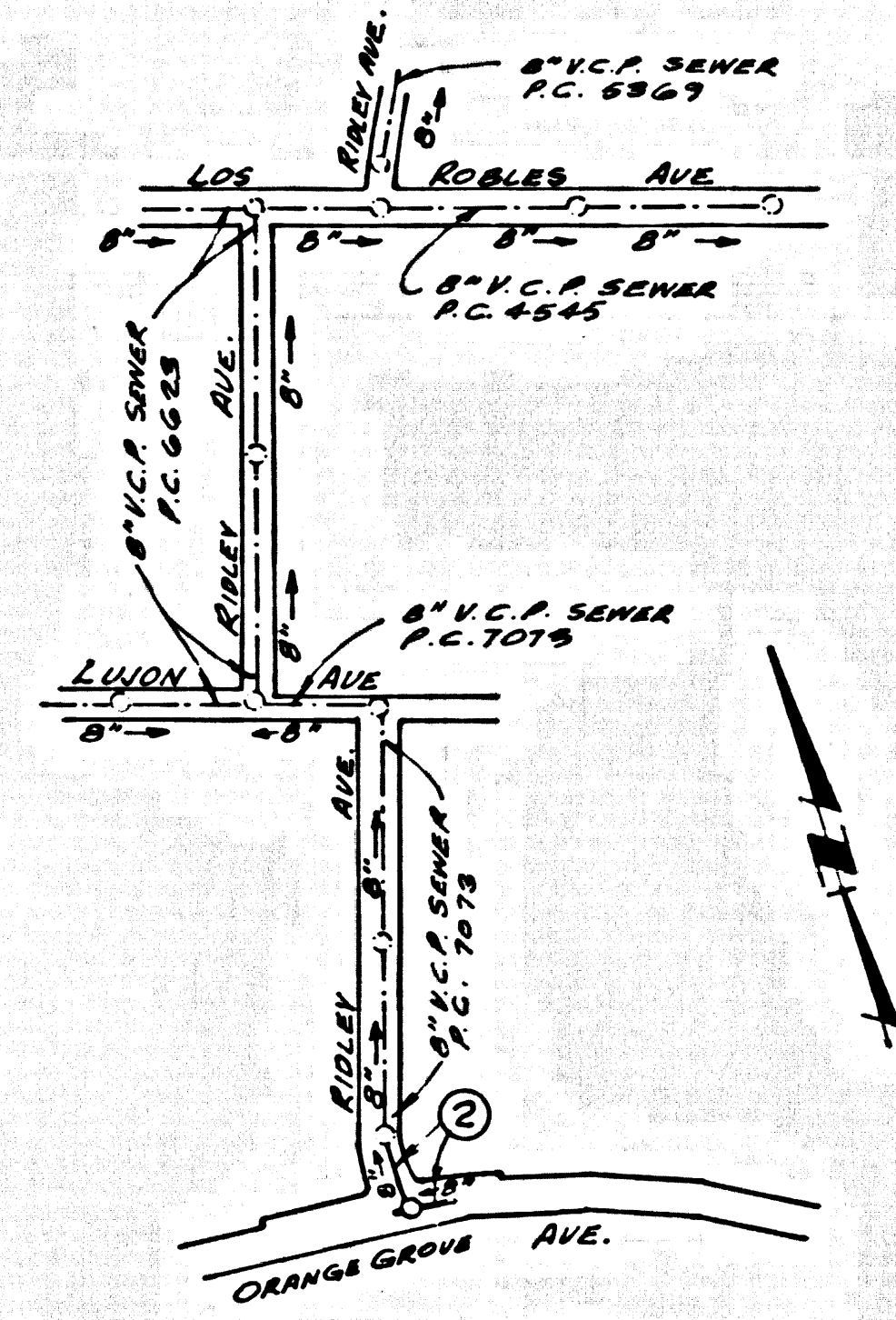


B.M. B.S. 1597 ELEV. 499.911
 20' DEPT. 8 1/2" TAG W/ 6" CULV. WALL
 TO H.S.E. N 14360 ORANGE GROVE AVE.
 30' S. 5' E. & 150' W. 9/4 TURNBULL
 CANYON ROAD.
 WHITTIER QUAD. 19.62



INDEX MAP
 P.C. 8542
 SCALE: 1" = 300'

DOUBLE SCALE
 LA PUENTE BLDG. DIST. NO. 2.0

PROFILE, ALIGNMENT AND GRADE OF
 SANITARY SEWERS P.C. 8542
 CONSTRUCTED IN PAGE 1
 ORANGE GROVE AVENUE

PRIVATE CONTRACT NO. 8542

W.S. 37-E4
 1 SHEET 2 PAGES
 SCALE: HORIZ. 1" = 40' VERT. 1" = 4' OCTOBER, 1970
 PREPARED IN THE OFFICES OF
 JOHN D. ROSE
 2775 BREA BLVD. BREA, CALIF.
 JOHN D. ROSE
 REG. C. E. NO. 12437

- NOTE:
- HOUSE LATERALS TO BE CONSTRUCTED WITH INVERTS AT PROPERTY LINE & FEET BELOW CURB GRADE EXCEPT AS NOTED.
 - PROVIDE STAKES ON THE PROPERTY LINE OR PROPERTY LINES PRODUCED AT RIGHT ANGLES TO THE SEWER LINE AT THE CENTER LINE OF EACH MANHOLE.
 - NO REPRESENTATIVE OF THE COUNTY ENGINEER WILL SURVEY OR LAY OUT ANY PORTION OF THE WORK.
 - THE PRIVATE ENGINEER SHALL FURNISH THE COUNTY ENGINEER WITH GRADE SHEETS AND STATIONING FOR ALL HOUSE LATERALS AND "T" OR "T" BRANCHES AND SHALL PROVIDE STAKES FOR THEM AT THEIR PROPER LOCATIONS WITH STATIONING PLAINLY MARKED. ALL HOUSE LATERALS SHALL BE CONSTRUCTED IN A STRAIGHT ALIGNMENT AT RIGHT ANGLES FROM THE MAIN LINE SEWER EXCEPT AS SHOWN ON THE PLANS. HOUSE LATERALS FROM CHIMNEYS SHALL NOT HAVE AN ANGLE OF LESS THAN 45° WITH THE MAIN LINE SEWER. ANY CHANGE IN ALIGNMENT SHALL BE REQUESTED IN WRITING BY THE PRIVATE ENGINEER.
 - THE PRIVATE ENGINEER SHALL FURNISH THE HOUSE LATERAL DEPTH AT THE PROPERTY LINE BELOW THE TOP OF CURB ELEVATION FOR EACH HOUSE LATERAL ON THE GRADE SHEET.
 - NO REVISIONS SHALL BE MADE IN THESE PLANS WITHOUT THE APPROVAL OF THE COUNTY ENGINEER.
 - THE CONTRACTOR SHALL NOTIFY THE CONSTRUCTION DIVISION BY TELEPHONE, MANDSON 9-2747, EXT. 8158, AT LEAST TWENTY-FOUR HOURS BEFORE STARTING ANY WORK UNDER THIS CONTRACT.
 - ALL STRUCTURES SHALL BE EITHER BRICK MANHOLES PER S-3 OR PRECAST CONCRETE MANHOLES PER S-304 S.4, EXCEPT AS NOTED.
 - "T" OR "T" BRANCHES MAY BE USED FOR CONNECTIONS TO MAINLINE SEWERS EXCEPT AS NOTED.
 - MANHOLE TOPS IN UNIMPROVED AREAS OF WAY TO BE 2 1/2 INCHES ABOVE FINISHED GRADE.
 - USE EXTRA STRENGTH PIPE. ALL PIPE IS STANDARD DEPTH EXCEPT AS NOTED.
 - VENTURED CLAY PIPE JOINTS SHALL BE TYPE "T", "F", OR "H" PER STANDARD SPECIFICATIONS SECTION 202.2.
 - IF A POWER POLE IS WITHIN THREE FEET OF THE SEWER, THE SEWER SHALL BE ENCASED, PER S-23, TWO FEET ON EACH SIDE FROM THE POINT OF INTERFERENCE.
 - IF DURING THE COURSE OF CONSTRUCTION IT IS DETERMINED THAT THERE IS LESS THAN FIVE FEET OF COVER OVER THE TOP OF A MAIN LINE OR HOUSE LATERAL "T" BRANCH WHICH IS NOT SPECIFIED ON THE PLANS, THE PIPE SHALL BE ENCASED PER S-23, CPAN 2, UNLESS OTHERWISE APPROVED BY THE COUNTY ENGINEER.
 - RESURFACE ALL REVISIONS WITHIN PAVED AREAS TO MEET L.A. COUNTY ROAD DEPT. OR CALIFORNIA STATE HIGHWAY REQUIREMENTS IN ACCORDANCE WITH PERMITS.
 - SEWER TO BE TESTED FOR LEAKAGE PER SECTION 206.2.2.2 OF THE STANDARD SPECIFICATIONS.
 - REFER TO SECTION 7-1.6.1 OF THE STANDARD SPECIFICATIONS, REGARDING SAFETY COVERS.
 - ALL JOINTS BETWEEN CAST IRON PIPE AND VENTURED CLAY PIPE SHALL BE MADE WITH A RUBBER JOINT, TYPE "C" OR "D", WITH REINFORCING IF NECESSARY PER STANDARD SPECIFICATIONS, SECTION 202.2.
- THE FOLLOWING LATEST REVISED STANDARD PLANS ON FILE IN THE OFFICE OF THE COUNTY ENGINEER SHALL APPLY IN THE CONSTRUCTION OF THIS PROJECT:
- | | |
|---|------|
| LEGEND | S-1 |
| MINIMUM PUBLIC SAFETY REQUIREMENTS | S-2 |
| BRICK MANHOLE | S-3 |
| NON-REINFORCED PRECAST CONCRETE MANHOLE | S-3A |
| REINFORCED PRECAST CONCRETE MANHOLE | S-3B |
| MANHOLE FRAME AND COVER | S-3C |
| STANDARD MANHOLE DEPTH | S-3D |
| STANDING FOR SEWER PIPE | S-3E |
| CRACKING AND ENCASEMENT | S-3F |
| WYE OR TE JOINT | S-3G |
| ALLOWABLE TRENCH WIDTHS | S-3H |
- County Sanitation Districts shall be notified prior to the following so that required inspection can be made (Phone 337-1025 - 4 lines)
- No connections for the Department of Sanitation's water shall be made to sewers shown on these sheets without written permission from the Chief Engineer and General Manager of the County Sanitation Districts.

COLLECT CHARGES AS INDICATED

NOTE: GRADE TO WHICH THIS IMPROVEMENT IS TO BE CONSTRUCTED ARE SHOWN ON PLANS AND PROFILE. GRADE POINTS FOR TOP OF CURB, CENTER LINE OF STREETS, OR CENTER LINE OF ALLEYS ARE SHOWN BY CIRCLES ON PROFILES AT ALL POINTS BETWEEN DESIGNATED POINTS. THE GRADE SHALL BE ESTABLISHED SO AS TO CONFORM TO A STRAIGHT LINE DRAWN BETWEEN SAID DESIGNATED POINTS. ELEVATIONS ARE IN FEET ABOVE U.S.C. & G.S. SEA LEVEL DATUM OF 1929.

WORK SHALL BE CONSTRUCTED ACCORDING TO THE STANDARD SPECIFICATIONS FOR PUBLIC WORKS CONSTRUCTION 1970 Edition AND COUNTY ENGINEER'S GENERAL PROGRAM FOR THE CONSTRUCTION OF SANITARY SEWERS AND SHALL BE PROSECUTED ONLY IN THE PRESENCE OF THE COUNTY ENGINEER.

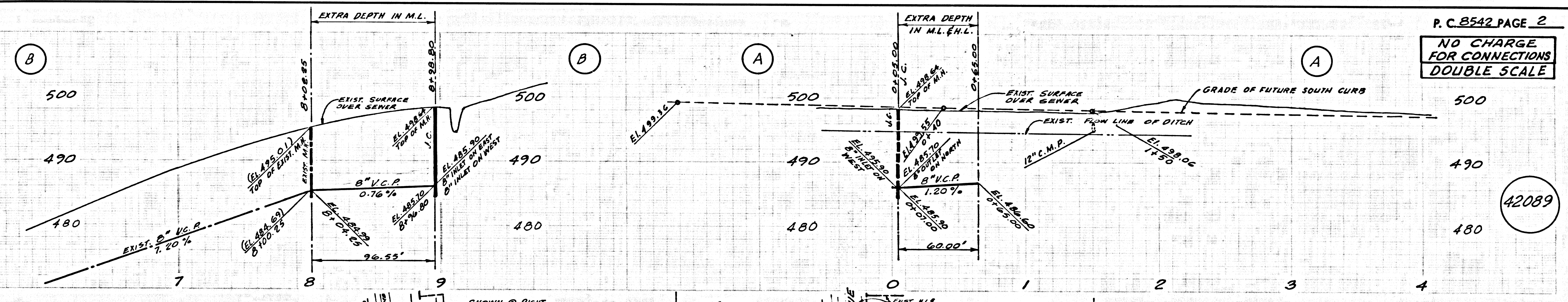
IF WORK CAN BE STARTED, THE CONTRACTOR MUST OBTAIN A PERMIT TO EXCAVATE IN COUNTY STREETS FROM THE L.A. COUNTY ROAD DEPT., DISTRICT OFFICE NO. 1111, AND PAY A FEE TO THE COUNTY ENGINEER, ROOM 508, COUNTY ENGINEERING BUILDING, 118 WEST SECOND STREET OR, P.O. 1, 60011A AVE., SAN DIMAS, REGIONAL OFFICE, IMPROVEMENT TO COVER THE COST OF CONSTRUCTION INSPECTION AND RECORD PLANS.

APPROVAL OF THIS PLAN BY THE COUNTY OF LOS ANGELES DOES NOT CONSTITUTE A REPRESENTATION AS TO THE ACCURACY OF THE LOCATION OF OR THE EXISTENCE OR NON-EXISTENCE OF ANY UNDERGROUND UTILITY PIPE, OR STRUCTURE WITHIN THE LIMITS OF THIS PROJECT. THE USER APPLIES TO ALL PAGES.

IF WORK IS TO BE DONE IN A STATE HIGHWAY, A PERMIT MUST BE OBTAINED FROM THE STATE OF CALIFORNIA, DIVISION OF HIGHWAY, 120 SOUTH BRIDGE STREET, LOS ANGELES, CALIFORNIA.

COUNTY OF LOS ANGELES, CALIFORNIA
 JOHN A. LAMBE, COUNTY ENGINEER J. D. PARKHURST, CHIEF ENGINEER
 APPROVED BY [Signature] APPROVED BY [Signature]
 SAN DIMAS REGIONAL ENGINEER OFFICE ENGINEER
 CHECKED BY [Signature] STATE
 REG. C.E. NO. 12166

42088



P.C. 8542 PAGE 2
 NO CHARGE FOR CONNECTIONS
 DOUBLE SCALE

42089

