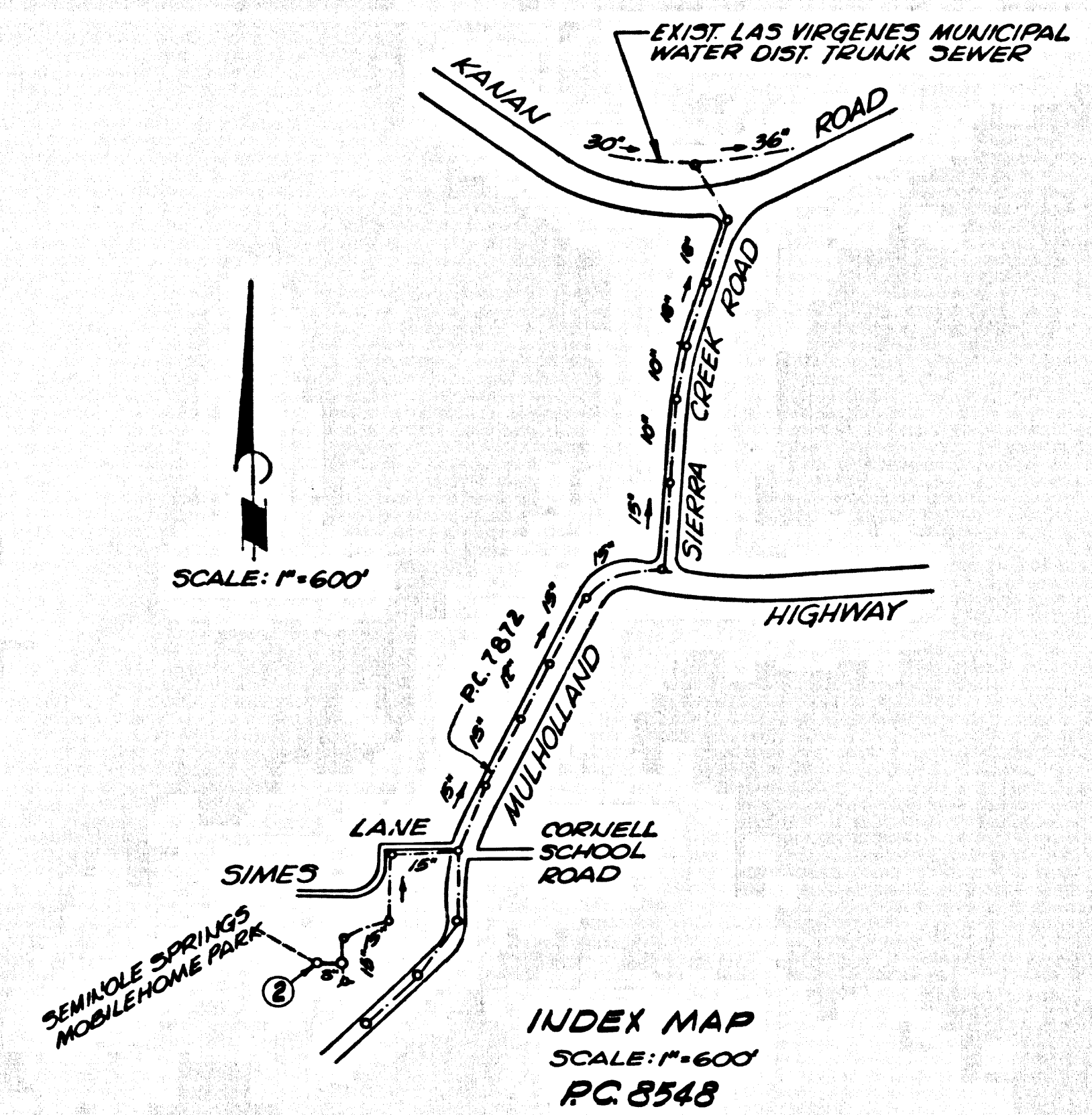


B.M. SY 5523 ELEV. 838.741
 12" DIA. CAP. 12" IN CONC. POST 6" IN ABOVE SURFACE 34 FT. 1" IN APPROXIMATE C/L. MULLHOLLAND HWY. & 45 FT. 1" E. OF E. EDGE MAC SIERRA CREEK RD. 76 FT. 1" N.E. PP. NO. 609660 & 176 FT. 1" W. PP. NO. 609659 (M.D. (B.M. 53-42 RE. 5069 1/6))
 MALIBU QUAD. 19 52



- GENERAL NOTES:**
1. ELEVATIONS ARE IN FEET ABOVE M.S.L. & U.S. SEA LEVEL DATUM OF 1929.
 2. NO SHIFTS SHALL BE MADE IN THESE PLANS WITHOUT THE APPROVAL OF THE COUNTY ENGINEER.
 3. NO REPRESENTATIVE OF THE COUNTY ENGINEER WILL SURVEY OR LAY OUT ANY PORTION OF THE WORK.
 4. GRADES TO WHICH THIS IMPROVEMENT IS TO BE CONSTRUCTED ARE SHOWN ON PLANS AND PROFILES. GRADE POINTS FOR TOP OF CURB, CENTER LINE OF STREETS, OR CENTER LINE OF ALLEYS ARE SHOWN BY CIRCLES ON PROFILES. AT ALL POINTS BETWEEN DESIGNATED POINTS THE GRADE SHALL BE ESTABLISHED SO AS TO CONFORM TO A STRAIGHT LINE DRAWN BETWEEN SAID DESIGNATED POINTS.
 5. THE PRIVATE ENGINEER SHALL FURNISH THE COUNTY ENGINEER WITH GRADE SHEETS AND STATIONING FOR ALL HOUSE LATERALS AND "T" OR "T" BRANCHES AND SHALL PROVIDE STAKES FOR THEM AT THESE PROPER LOCATIONS WITH STATIONING PLAINLY MARKED. ALL HOUSE LATERALS SHALL BE CONSTRUCTED IN A STRAIGHT ALIGNMENT AT RIGHT ANGLES FROM THE MAIN LINE SEWER EXCEPT AS SHOWN ON THE PLANS. HOUSE LATERALS FROM CHIMNEYS SHALL NOT HAVE AN ANGLE OF LESS THAN 45° WITH THE MAIN LINE SEWER. ANY CHANGE IN ALIGNMENT SHALL BE REQUESTED IN WRITING BY THE PRIVATE ENGINEER.
 6. THE PRIVATE ENGINEER SHALL FURNISH THE HOUSE LATERAL SIZES AT THE PROPERTY LINE BELOW THE TOP OF CURB ELEVATION FOR EACH HOUSE LATERAL ON THE GRADE SHEET.
 7. BEFORE WORK CAN BE STARTED, THE CONTRACTOR MUST OBTAIN A PERMIT TO EXCAVATE IN COUNTY STREETS FROM THE L. A. COUNTY ROAD DEPT., PERMIT OFFICE NO. 3, AND PAY A FEE TO THE COUNTY ENGINEER, ROOM 309, COUNTY ENGINEERING BLDG., 100 WEST SECOND STREET OR MALIBU REGIONAL OFFICE, TO COVER THE COST OF CONSTRUCTION INSPECTION AND RECORD PLANS.
 8. IF WORK IS TO BE DONE IN A STATE HIGHWAY, A PERMIT MUST BE OBTAINED FROM THE STATE OF CALIFORNIA, DIVISION OF HIGHWAYS, 120 SOUTH SPRING STREET, LOS ANGELES, CALIFORNIA.
 9. APPROVAL OF THE PLAN BY THE COUNTY OF LOS ANGELES DOES NOT CONSTITUTE A REPRESENTATION AS TO THE ACCURACY OF THE LOCATION OF OR THE EXISTENCE OR NON-EXISTENCE OF ANY UNDERGROUND UTILITY PIPE, OR STRUCTURE WITHIN THE LIMITS OF THE PROJECT. THIS NOTICE APPLIES TO ALL PAGES.
 10. REFER TO SECTION 1-18.4.3 OF THE STANDARD SPECIFICATIONS, REGARDING SAFETY OBSTACLES.

PROFILE, ALIGNMENT AND GRADE OF
SANITARY SEWERS PAGE 1

TO BE CONSTRUCTED IN
 SEMINOLE HOT SPRINGS MOBILEHOME PARK
 (PRIVATE SEWER)
PRIVATE CONTRACT NO. 8548

W.S. 93
 1 SHEET, 2 PAGES
 SCALE: VERT. 1"=4' OCTOBER, 1970
 HORIZ. 1"=40'
 PREPARED IN THE OFFICES OF
JOSEPH E. BONADIMAN & ASSOCIATES
 1555 KENDALL DRIVE, SAN BERNARDINO, CALIF., 92407
 BY: *Joseph E. Bonadiman*
 REG. C. E. No. 5344

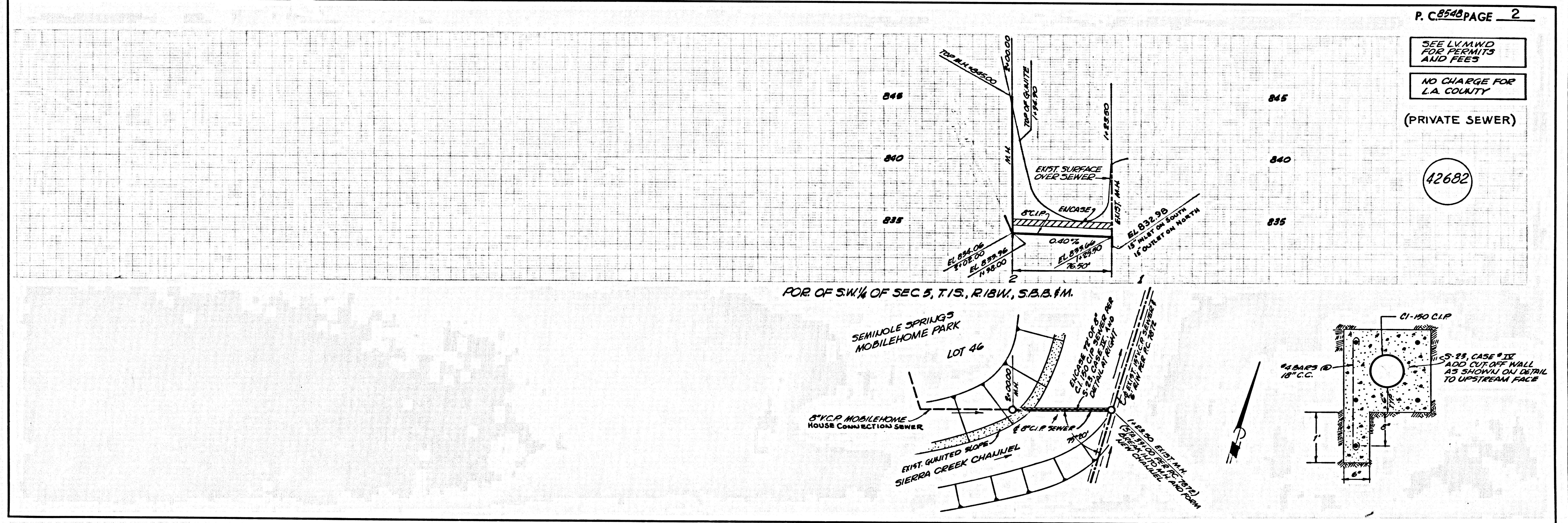
42681

- CONSTRUCTION NOTES:**
1. WORK SHALL BE CONSTRUCTED ACCORDING TO THE STANDARD SPECIFICATIONS FOR PUBLIC WORKS CONSTRUCTION (1970 EDITION WITH SUPPLEMENTS) AND COUNTY ENGINEER SPECIAL PROVISIONS FOR THE CONSTRUCTION OF SANITARY SEWERS DATED SEPTEMBER 1, 1970, AND SHALL BE PROSECUTED ONLY IN THE PRESENCE OF THE COUNTY ENGINEER.
 2. THE CONTRACTOR SHALL NOTIFY THE CONSTRUCTION DIVISION BY TELEPHONE, ALHAMBRA 5-241, EXT. 4133, AT LEAST TWENTY-FOUR HOURS BEFORE STARTING ANY WORK UNDER THIS CONTRACT.
 3. HOUSE LATERALS TO BE CONSTRUCTED WITH INVERTS AT PROPERTY LINE & SET BELOW CURB GRADE EXCEPT AS NOTED.
 4. WYE OR THE BRANCHES MAY BE MADE FOR CONNECTIONS TO MAINLINE SEWERS EXCEPT AS NOTED.
 5. ALL STRUCTURES SHALL BE EITHER BRICK MANHOLES PER 8.3 OR PRECAST CONCRETE MANHOLES PER 8-36, EXCEPT AS NOTED.
 6. PROVIDE STAKES ON THE PROPERTY LINE OR PROPERTY LINES PROCEEDED AT RIGHT ANGLES TO THE SEWER LINE AT THE CENTER LINE OF EACH MANHOLE.
 7. MANHOLE TOPS IN UNIMPROVED RIGHTS OF WAY TO BE SIX INCHES ABOVE FINISHED GRADE.
 8. WITHESED CLAY PIPE JOINTS SHALL BE TYPE "P", "F", OR "T" PER STANDARD SPECIFICATIONS SECTION 308-2.
 9. IF A POWER POLE IS WITHIN THREE FEET OF THE SEWER, THE SEWER SHALL BE ENCASED PER 8-33, CASE II, TWO FEET ON EACH SIDE FROM THE POINT OF INTERFERENCE.
 10. IF DURING THE COURSE OF CONSTRUCTION IT IS DETERMINED THAT THERE IS LESS THAN FOUR FEET OF COVER OVER THE TOP OF A MAIN LINE OR HOUSE LATERAL 12" C.P. SEWER WHICH IS NOT INDICATED ON THE PLANS, THE PIPE SHALL BE ENCASED PER 8-33, CASE II, UNLESS OTHERWISE APPROVED BY THE COUNTY ENGINEER.
 11. ALL JOINTS BETWEEN CLAY PIPE AND WITHESED CLAY PIPE SHALL BE MADE WITH A RUBBER SLEEVE JOINT, TYPE "C" OR "T", FIFTEEN BURNING IF NECESSARY PER STANDARD SPECIFICATIONS, SECTION 308-2.
 12. SEWERAGE TO BE AIR PRESSURE TESTED FOR LEAKAGE PER SECTION 306-2.3.2.C, OF THE STANDARD SPECIFICATIONS AND SPECIAL PROVISIONS.
 13. REINFORCE ALL TRENCHES WITHIN PAVED AREAS TO MEET L.A. COUNTY ROAD DEPT. OR CALIFORNIA STATE HIGHWAY REQUIREMENTS IN ACCORDANCE WITH PERMITS.

THE FOLLOWING LATEST REVISION STANDARD PLANS ON FILE IN THE OFFICE OF THE COUNTY ENGINEER SHALL APPLY IN THE CONSTRUCTION OF THIS PROJECT.

LEGEND	DATE
MINIMUM PUBLIC SAFETY REQUIREMENTS	8-3
BRICK MANHOLES	8-3
STANDARD MANHOLE STEP	8-37
REWORKING FOR SEWER PIPE	8-38
CALLINGS AND ENCLOSURES	8-38
WYE OR THE SUPPORT	8-38
ALLOWABLE TRENCH WIDTHS	8-38
LOCKING MANHOLE FRAMES AND COVERS	8-38
NON-REINFORCED PRECAST CONCRETE MANHOLE	8-38

COUNTY OF LOS ANGELES, CALIFORNIA
 JOHN A. LAMBE, COUNTY ENGINEER LAS VIRGENES MUNICIPAL WATER DISTRICT
 APPROVED *Sam H. Miller* 11/24/70 APPROVED *John Stokes* 1-11-71
 REGIONAL ENGINEER (DATE) CHIEF ENGINEER & GENERAL AGENT (DATE)
 CHECKED *Sam H. Miller* 11/24/70 *C. R. Rasmussen* 11/24/70
 SANITARY DIVISION (DATE) DESIGN DIVISION (DATE)
 REG. C.E. NO. 17722
 CALABASAS BLDG. DIST. 9.1 I.N. 0870.78



P. C. 8548 PAGE 2

SEE L.V.M.W.D. FOR PERMITS AND FEES
 NO CHARGE FOR L.A. COUNTY
 (PRIVATE SEWER)

42682