

J.C. BASE DETAIL
 AT STA. 5+44.43
 SCALE 1" = 4'

1958 STORM DRAIN BOND ISSUE

PREPARED BY		REVISIONS		DESCRIPTION
JOHN A. LAMBIE		MARK	DATE	
COUNTY ENGINEER				
RECOMMENDED BY				
[Signature]				
DRAWN BY: [Signature]				
CHECKED BY: [Signature]				
DESIGNED BY: [Signature]				
DATE: 10/21/58				

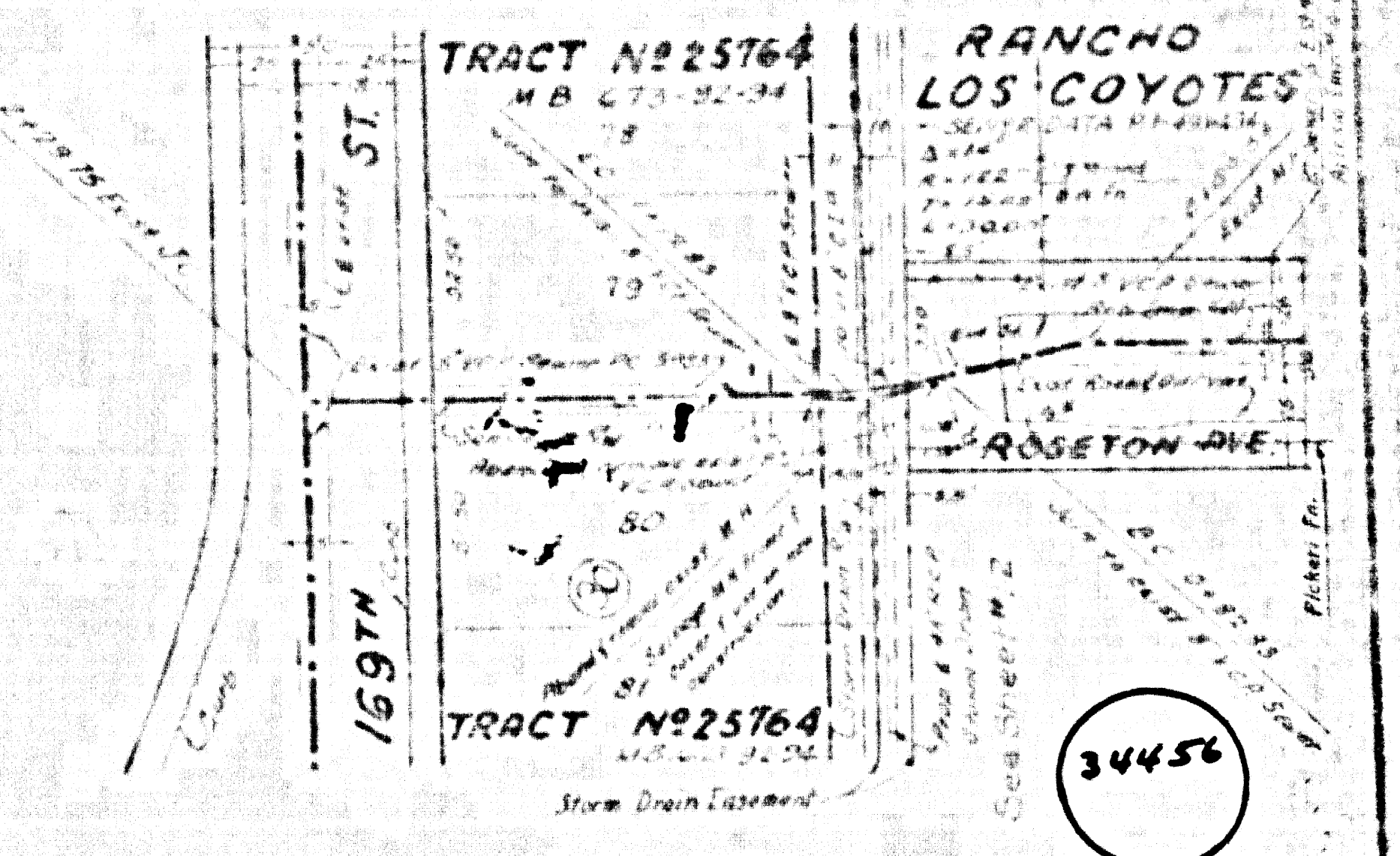
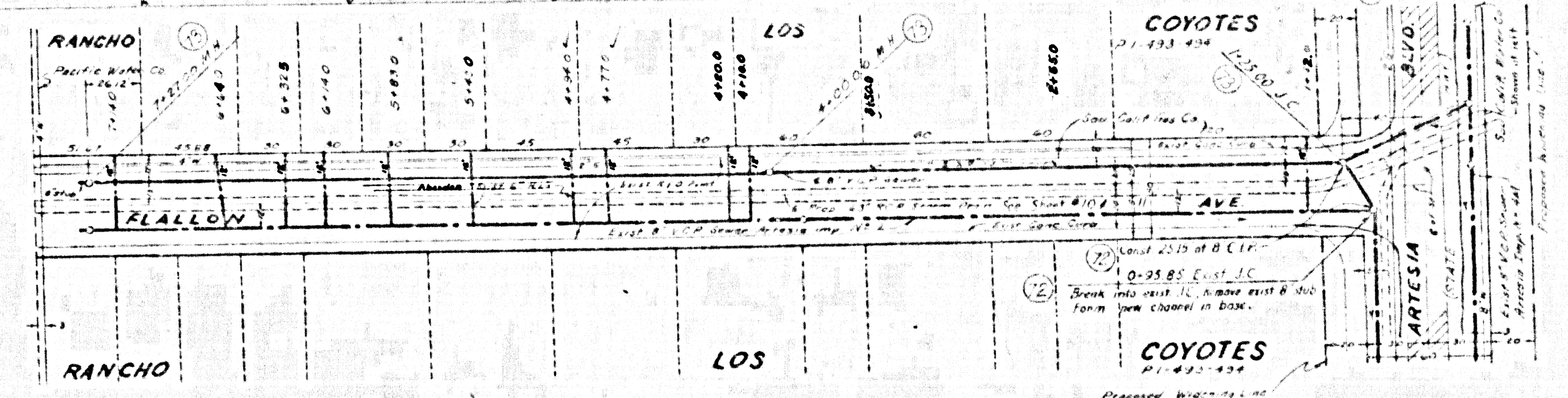
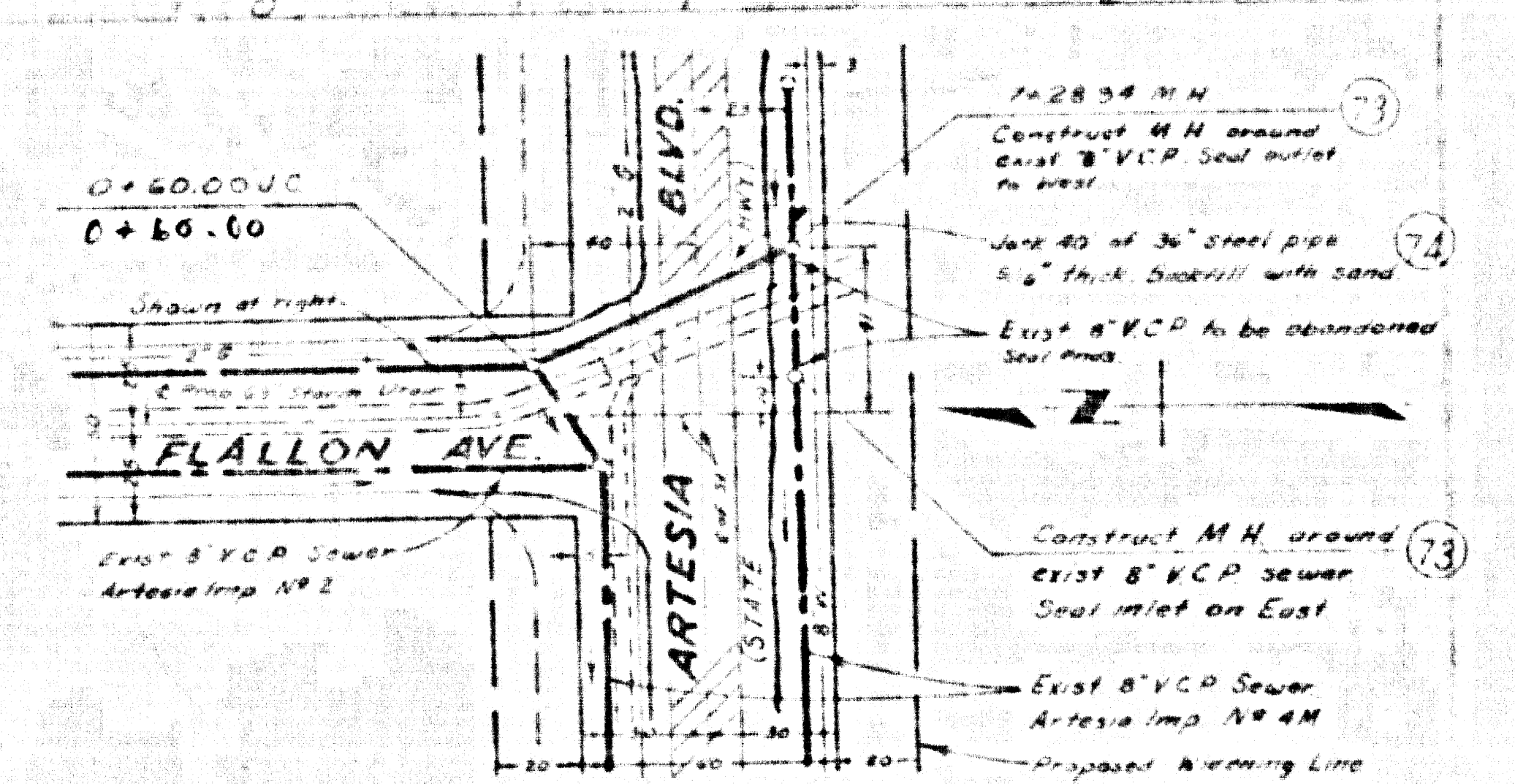
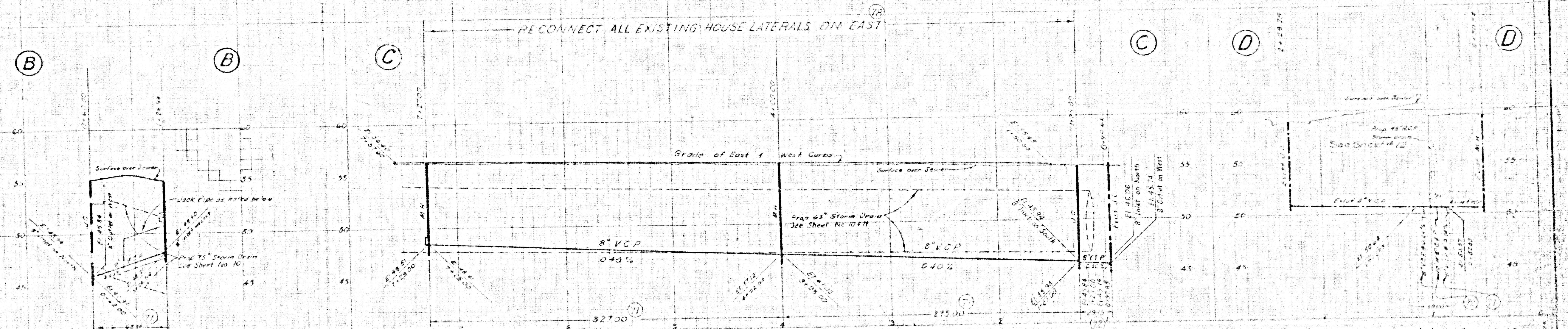
LOS ANGELES COUNTY
 FLOOD CONTROL DISTRICT
 PROJECT NO. 531
 ARTESIA
 UNIT 3 LINE A
 SANITARY SEWER RECONSTRUCTION
 PLAN AND PROFILE

SEE DRAWING 3445

B.M. 1826 El. 57.768 F.B. 2519 21,
 Artesia Blvd W of Pioneer Blvd, S Side, L. 1st in NE
 Cor. of Walk in front of House #11654.

MSO 1839 of 28924 F.B. 2519 21
 Artesia Blvd, 1352 ft. W of Pioneer Blvd, W Side
 San Gabriel, 1/4 M. W. of S. of El. Center of 34
 1352 ft. W. of S. of El. Center of 34

PROFILE
 HORIZ. SCALE 1"=40'
 VERT. SCALE 1"=4'



GENERAL NOTES:

- To Apply to Sheets 18479
- For Legions see Standard Plans S-117
- The Contractor may use cement mortar for vitrified clay pipe joints if the joints are specified in the specifications.
- All structures shall be brick sewer structures as per Standard Plan S-a-104
- Use standard manhole frame & cover as per Standard Plan S-a-117.
- Assumed sewers shall be sealed with brick & cement mortar.
- Use Formula #1 Sec. 5.4, of Standard Specifications to compute allowable leakage.
- Resurface Trenches within the paved area of streets as noted on the Storm Drain Plans.
- All Vitrified clay pipe shall be extra strength.

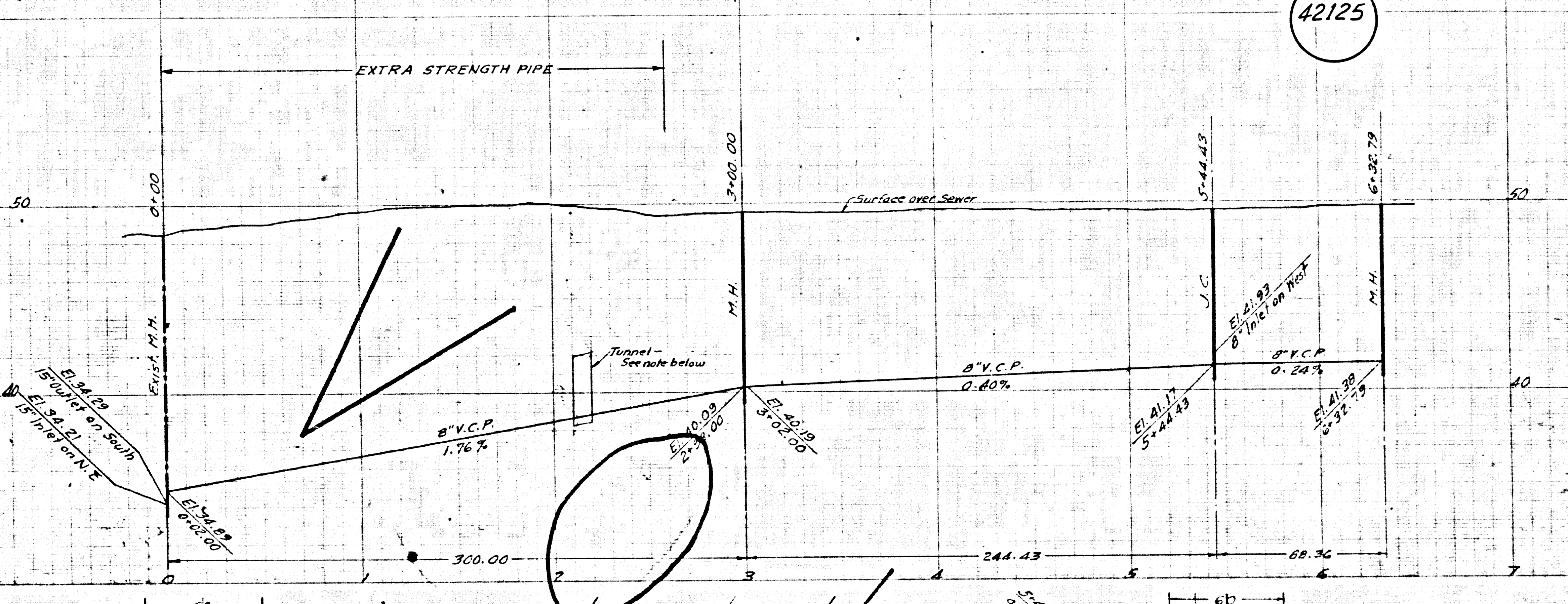
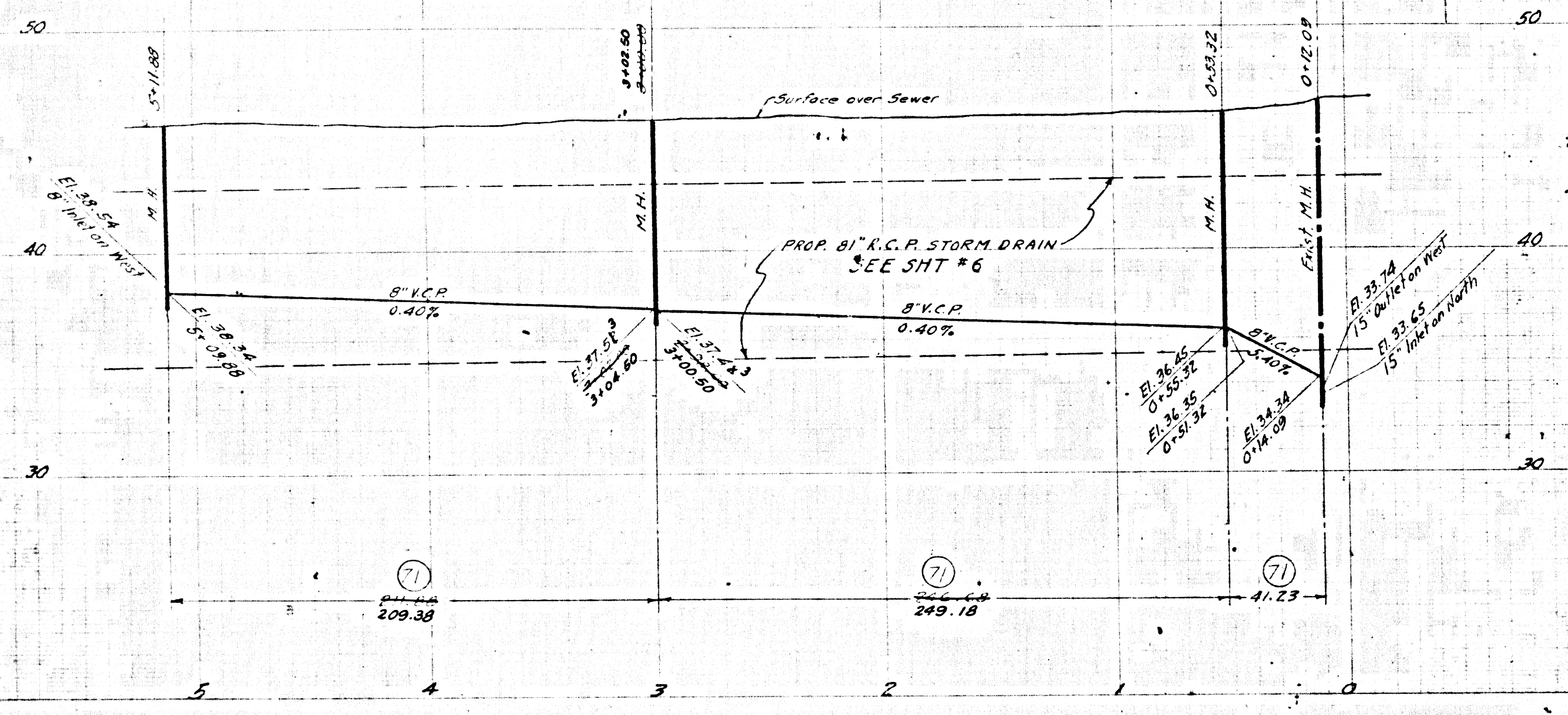
PLAN
 SCALE 1"=40'

SEE
 Ref PC 8549

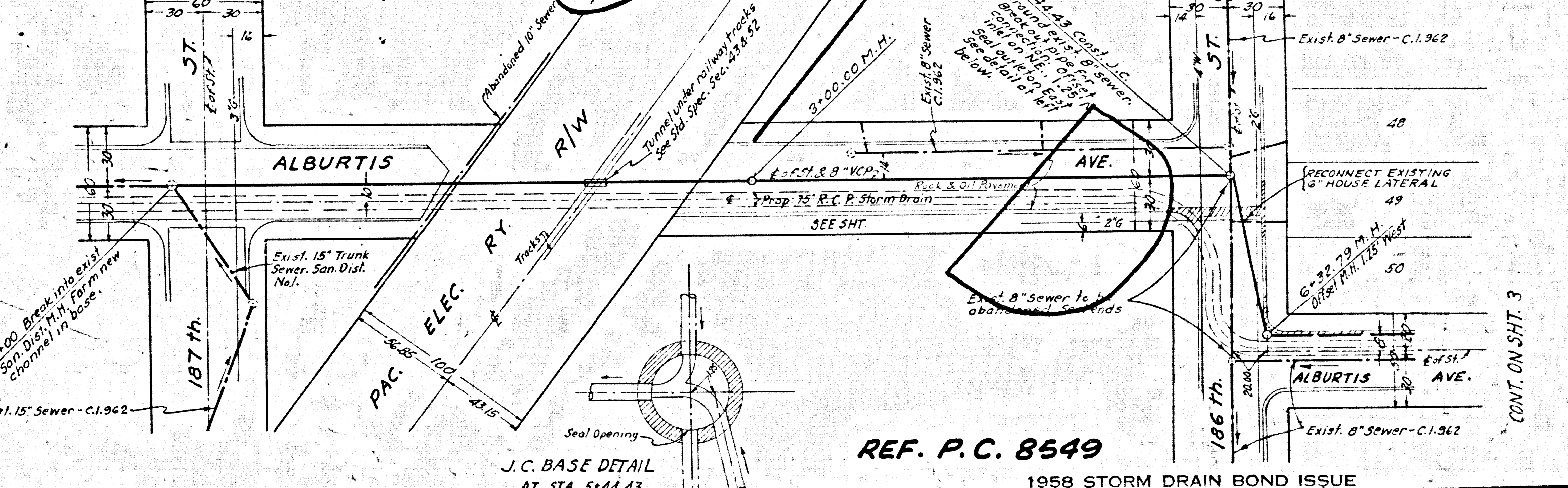
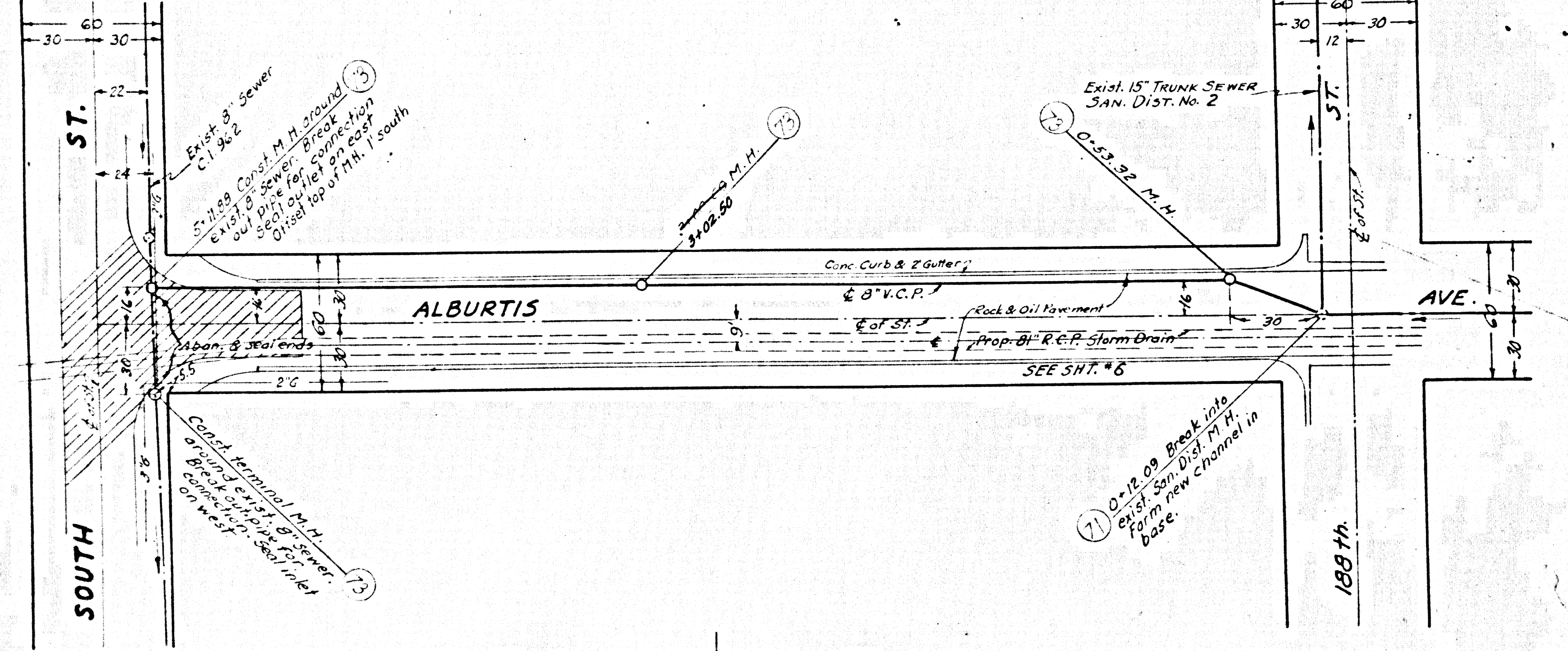
PREPARED BY		REVISIONS		LOS ANGELES COUNTY FLOOD CONTROL DISTRICT
DATE	DESCRIPTION	DATE	DESCRIPTION	
JOHN A. LAMBIE COUNTY ENGINEER				PROJECT NO. 533 ARTESIA UNIT 3 LINE A SANITARY SEWER RECONSTRUCTION PLAN AND PROFILE
RECOMMENDED BY				
APPROVED BY		APPROVED BY		DATE: NO. 25 1953 OF 13 SHEET 13 OF 22
DATE: 11/10/53		DATE: 11/10/53		

PROFILE
 HORIZ. SCALE: 1" = 40'
 VERT. SCALE: 1" = 4'

B.M.S.D. 1816 Elev. 46.24-4, F.E. 2519-16
 Alburdis Ave. & South St. N.E. Cor.
 Bt. Sph. in Cb. 6 Ft. N. of N. end C.R.



42125



REF. P.C. 8549
 1958 STORM DRAIN BOND ISSUE

PREPARED BY JOHN A. LAMBIE COUNTY ENGINEER	REVISIONS	LOS ANGELES COUNTY FLOOD CONTROL DISTRICT PROJECT NO. 533 ARTESIA UNIT 3 LINE A SANITARY SEWER RECONSTRUCTION PLAN AND PROFILE
RECOMMENDED BY <i>C.E. Bond</i> ASST. SANITATION ENGINEER	MARK DATE DESCRIPTION	
DRAWN BY: <i>W.C.D.</i> DESIGNED BY: <i>W.C.D.</i>	TRACED BY: <i>W.C.D.</i> SUBMITTED BY: <i>W.C.D.</i>	APPROVED BY: <i>M.E. Salas</i> CHIEF ENG. - 8/14/62
CHECKED BY: <i>W.C.D.</i> DATE: JAN. 1962	RECOMMENDED BY: <i>R.S. Bond</i>	SCALE: AS NOTED DATE: AUG. 62 SHEET 18 OF 22

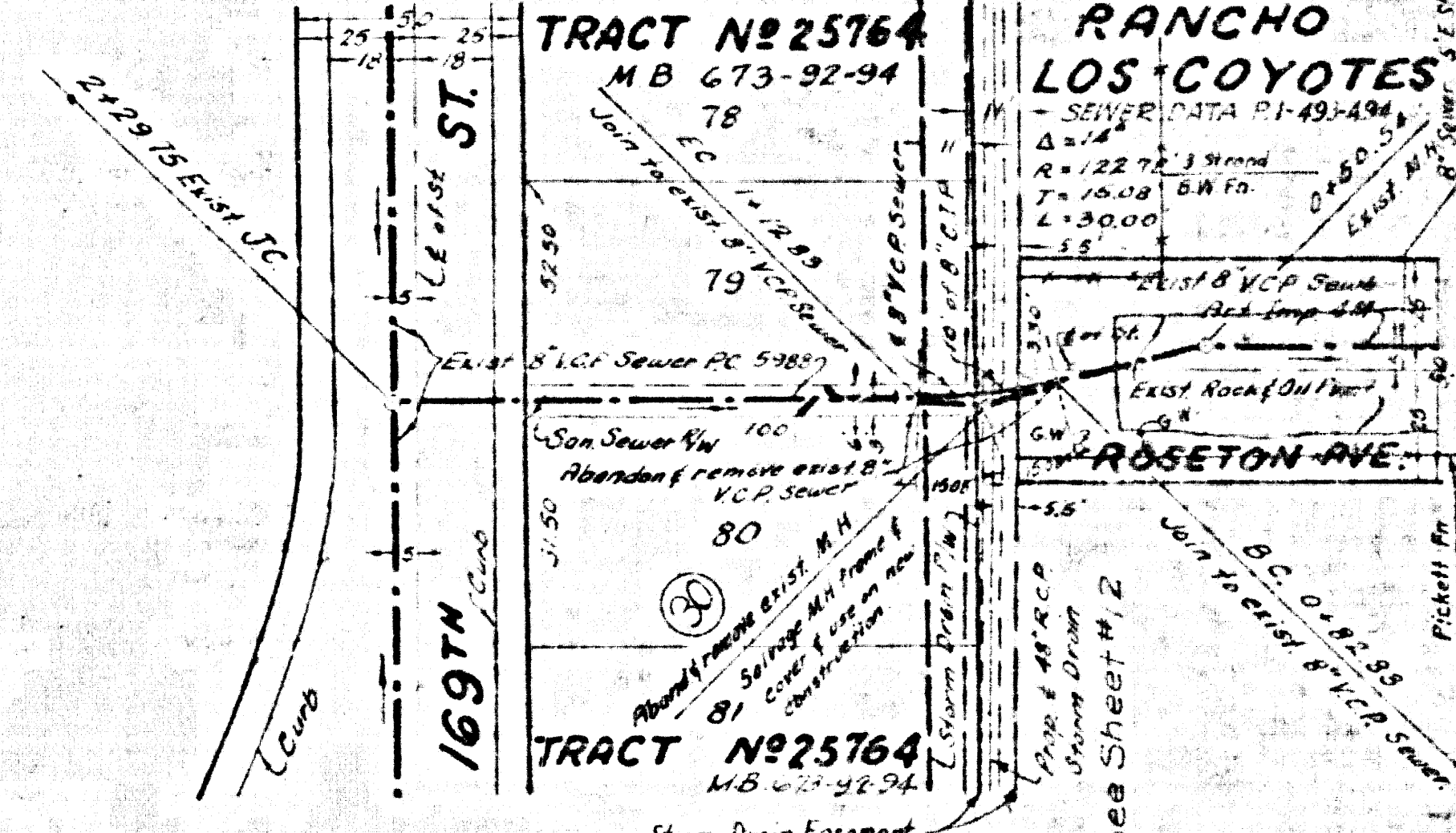
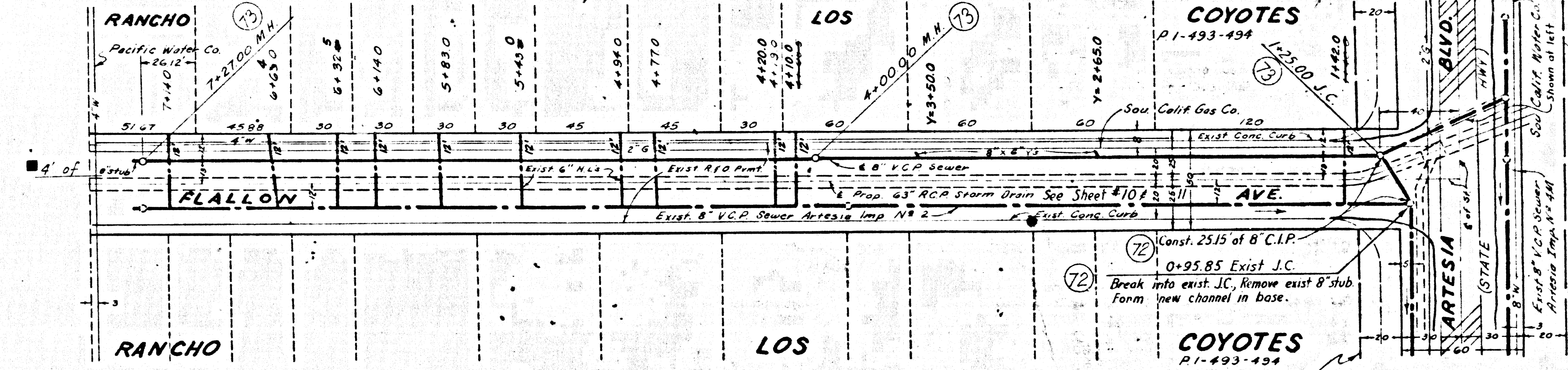
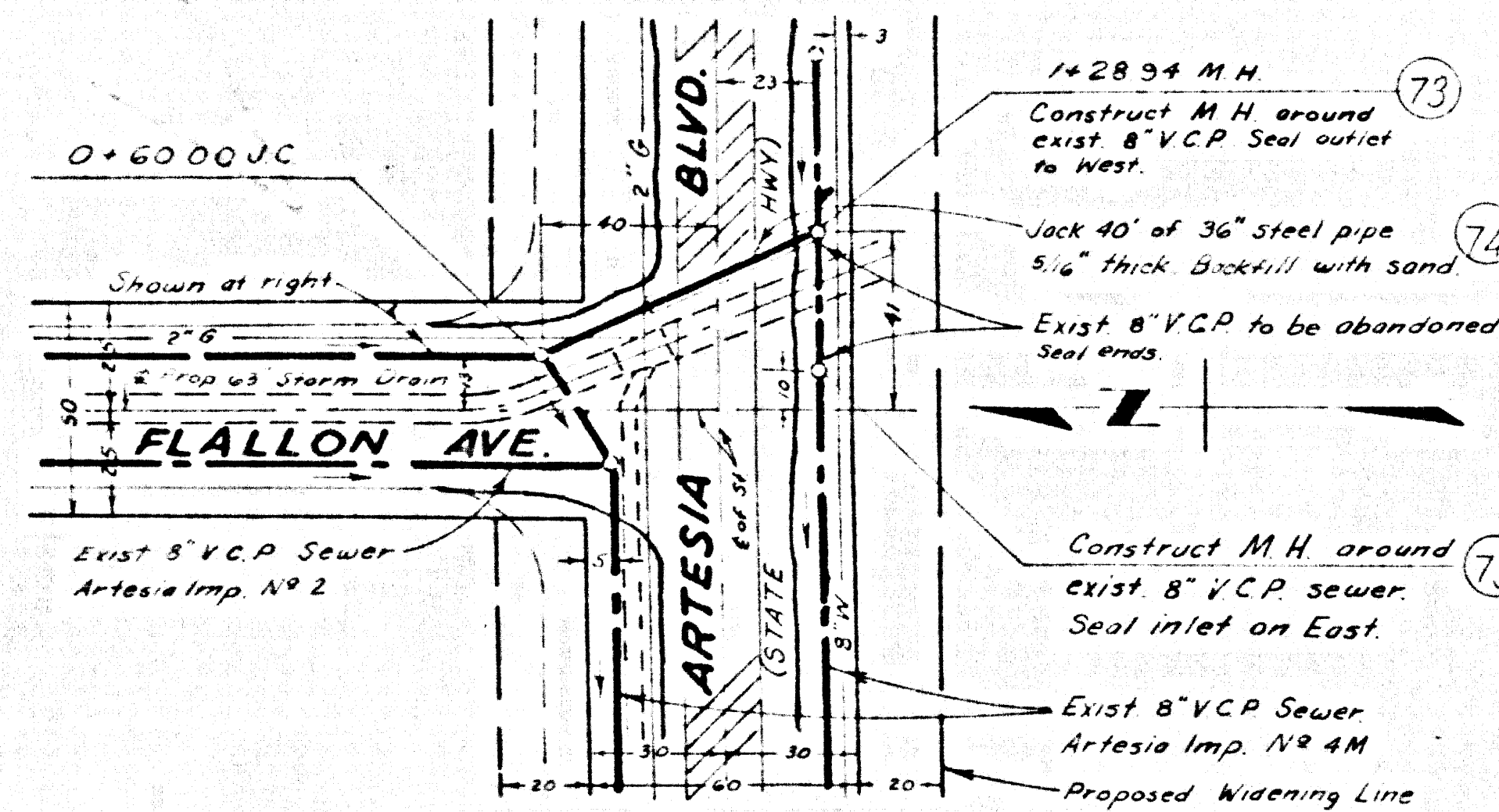
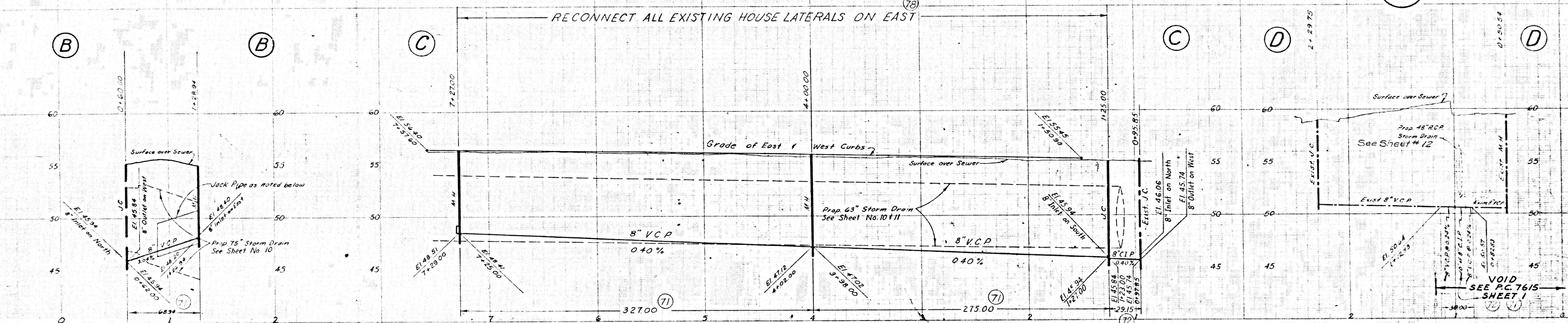
"AS BUILT" DRAWING

PROFILE
 HORIZ SCALE 1" = 40'
 VERT SCALE 1" = 4'

B.M. 1826 El. = 57.768 F.B. 2519-21,
 Artesia Blvd. W. of Pioneer Blvd., S. Side, L. & T. in N.E.
 Cor. of Walk in front of House #11634.

B.M. 1829 El. = 58.924 F.B. 2519-22
 Roseton Pl. 1300 ft. N. of Artesia Blvd. W. side
 Sta. precast B.M. Mon. 19' N. of center of St
 10 ft. N. of P.C. # 392260.

42124



- GENERAL NOTES:**
- To Apply to Sheets 18 & 19
 - For Legend see Standard Plan S-a-64
 - The Contractor may use cement mortar for all vitrified clay pipe joints or the joints specified in the specifications.
 - All structures shall be brick sewer structures, as per Standard Plan S-a-104.
 - Use standard manhole frame & cover as per Standard Plan S-a-117.
 - Abandoned sewers shall be sealed with brick & cement mortar.
 - Use Formula #1, Sec. 54, of Standard Specifications to compute allowable leakage.
 - Resurface Trenches within the paved area of streets as noted on the Storm Drain Plans.
 - All vitrified clay pipe shall be extra strength.

REF. P.C. 8549

1958 STORM DRAIN BOND ISSUE

PREPARED BY JOHN A. LAMBIE COUNTY ENGINEER	REVISIONS MARK DATE DESCRIPTION ■ 6-28-67 AS BUILT		LOS ANGELES COUNTY FLOOD CONTROL DISTRICT PROJECT NO. 533 ARTESIA UNIT 3 LINE A SANITARY SEWER RECONSTRUCTION PLAN AND PROFILE
	RECOMMENDED BY <i>[Signature]</i> ASSISTANT SANITATION ENGINEER		
DRAWN BY: <i>[Signature]</i> CHECKED BY: <i>[Signature]</i> TRACED BY: <i>[Signature]</i> DATE: July 18, 1967	DESIGNED BY: <i>[Signature]</i> CHECKED BY: <i>[Signature]</i> DATE: July 18, 1967	APPROVED BY: <i>[Signature]</i> COUNTY ENGINEER	SCALE: NO. 275-533-19 SHEET 19 OF 22

PLAN
 SCALE 1" = 40'

AS BUILT DRAWING