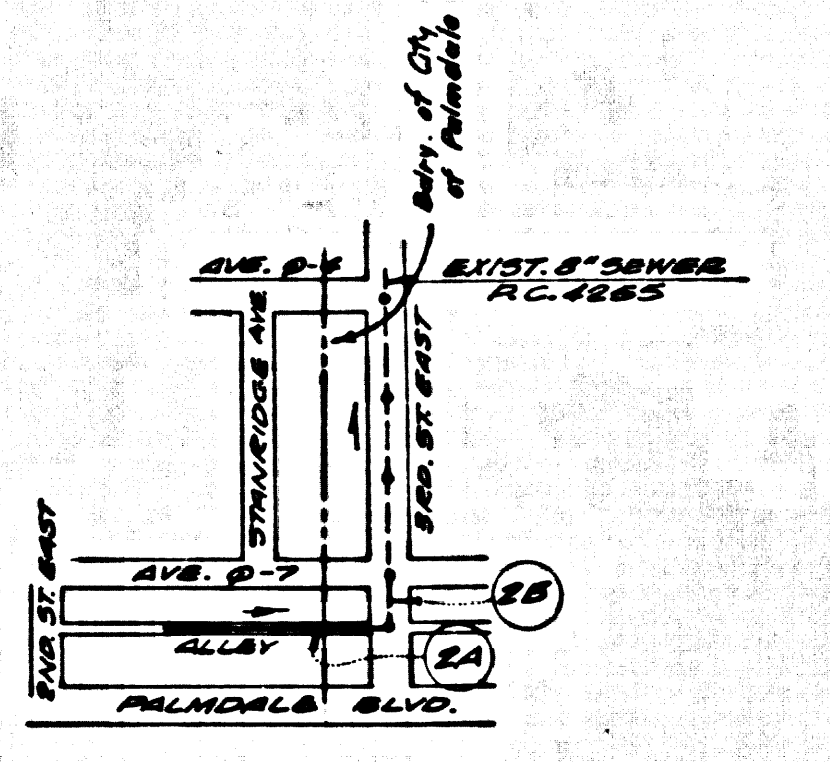


B.M. BL 2000 ELEV. 2000.413
ST. MARK MON. IN WELL 12" DOWN AT
E. INT. DIVISION ST. AND PALM-
DALE BLVD.
PALMDALE QUAD. 19 02



INDEX MAP
SCALE: 1" = 100'
P.C. 8551

County Sanitation Districts shall be notified prior to the following so that required inspections can be made (Phone 337-1025 - 639-1161) acceptance of the project.
No connections for the disposal of industrial wastes shall be made to sewers shown on these drawings without written permission from the Chief Engineer and General Manager of the County Sanitation Districts.

PALMDALE BLDG. DIST. NO. 8.1

- NOTES:
- PROVIDE STAKES ON THE PROPERTY LINE OR PROPERTY LINES PRODUCED AT RIGHT ANGLES TO THE SEWER LINE AT THE CENTER LINE OF EACH MANHOLE.
 - NO REPRESENTATIVE OF THE COUNTY ENGINEER WILL SURVEY OR LAY OUT ANY PORTION OF THE WORK.
 - THE PRIVATE ENGINEER SHALL FURNISH THE COUNTY ENGINEER WITH GRADE SHEETS AND STATIONING FOR ALL HOUSE LATERALS AND "T" BRANCHES AND SHALL PROVIDE STAKES FOR THEM AT THEIR PROPER LOCATIONS WITH STATIONING PLAINLY MARKED. ALL HOUSE LATERALS SHALL BE CONSTRUCTED IN A STRAIGHT ALIGNMENT AT RIGHT ANGLES FROM THE MAIN LINE SEWER UNLESS OTHERWISE SHOWN ON THE PLANS. HOUSE LATERALS FROM CHIMNEYS SHALL NOT HAVE AN ANGLE OF LESS THAN 45° WITH THE MAIN LINE SEWER. ANY CHANGE IN ALIGNMENT SHALL BE REQUESTED IN WRITING BY THE PRIVATE ENGINEER.
 - THE PRIVATE ENGINEER SHALL FURNISH THE HOUSE LATERAL DEPTH AT THE PROPERTY LINE BELOW THE TOP OF CURB ELEVATION FOR EACH HOUSE LATERAL ON THE GRADE SHEET.
 - NO REVISIONS SHALL BE MADE IN THESE PLANS WITHOUT THE APPROVAL OF THE COUNTY ENGINEER.
 - THE CONTRACTOR SHALL NOTIFY THE CONSTRUCTION DIVISION BY TELEPHONE, MADISON 4-4747, EXT. 8158, AT LEAST TWENTY-FOUR HOURS BEFORE STARTING ANY WORK UNDER THIS CONTRACT.
 - ALL STRUCTURES OTHER THAN MANHOLES SHALL BE CONSTRUCTED PER THE STANDARD SPECIFICATIONS PER S.D. 3.07 CAST CONCRETE MANHOLES PER S.D. 3.08 OR PER WHAT IS USED AS AN ALTERNATE. MANHOLES SHALL BE CONSTRUCTED PER THE STANDARD SPECIFICATIONS PER S.D. 3.07 CAST CONCRETE MANHOLES PER S.D. 3.08 OR PER WHAT IS USED AS AN ALTERNATE.
 - USE STANDARD MANHOLE FRAMES AND COVERS, PER S.D. 3.07, EXCEPT AS NOTED.
 - USE EXTRA STRENGTH PIPE ALL PER THE STANDARD SPECIFICATIONS PER S.D. 3.07 EXCEPT AS NOTED.
 - USE VITRIFIED CLAY PIPE JOINTS SHALL BE TYPE "F" PER S.D. 3.07, EXCEPT AS NOTED.
 - USE MECHANICAL COMPRESSION JOINTS FOR ALL C.P. JOINTS PER S.D. 3.07, EXCEPT AS NOTED.
 - IF A POWER POLE IS WITHIN THREE FEET OF THE SEWER, THE SEWER SHALL BE ENCASED, PER S.D. 3.25, TWO FEET ON EACH SIDE FROM THE POINT OF INTERFERENCE.
 - IF BEHIND THE CURB OR IN THE COURSE OF CONSTRUCTION IT IS DETERMINED THAT THERE IS LESS THAN FOUR FEET OF COVER OVER THE TOP OF A MAIN LINE OR HOUSE LATERAL V.C.P. SEWER WHICH IS NOT INDICATED ON THE PLANS, THE PIPE SHALL BE ENCASED PER S.D. 3.25, UNLESS OTHERWISE APPROVED BY THE COUNTY ENGINEER.
 - HOUSE LATERALS TO BE CONSTRUCTED WITH INVERTS AT PROPERTY LINE 4 FEET BELOW CURB GRADE EXCEPT AS NOTED.
 - RESURFACE ALL TRENCHES WITHIN PAVED AREAS TO MEET L.A. COUNTY ROAD DEPT. OR CALIFORNIA STATE HIGHWAY REQUIREMENTS IN ACCORDANCE WITH PERMITS.
 - ALL STRUCTURES TO BE TESTED FOR LEAKAGE PER SECTION 3.04-2, 3.07, 3.07.1 UNIFORM STANDARD SPECIFICATIONS. ENGINEERS SHALL APPLY IN THE CONSTRUCTION OF THIS PROJECT.
 - FOR ALLOWING SENSITIVE PERFORMING NO. 5 SPEC. 3.07.1.
 - ALL STATE AND LOCAL TRENCH SAFETY ORDERS WILL BE STRICTLY ENFORCED.

COLLECT CHARGES AS INDICATED

NOTICE TO CONTRACTOR
The existence and location of any underground utility pipes or structures shown on these plans are indicated by a search of the available records. To the best of my knowledge there are no existing utilities except as shown on these plans. The contractor is required to take due precautionary measures to protect the utility lines shown and any other lines not of record or not shown on these plans.
Barry S. Fischer
REG. 73046

CONSTRUCTED IN
3RD STREET EAST & ALLEY S/O AVENUE Q-7

PRIVATE CONTRACT NO. 8551

W.S. 65
1 SHEETS, 2 PAGES

42389

SCALE: VERT. 1" = 4' HORIZ. 1" = 40'

NOVEMBER 1970
PREPARED IN THE OFFICES OF
FISCHER ENGINEERING CO.
16200 VENTURA BLVD., ENCINO, CALIF. SUITE 309 783-7681
By Barry S. Fischer
BARRY S. FISCHER REG. C.E. NO. 13066

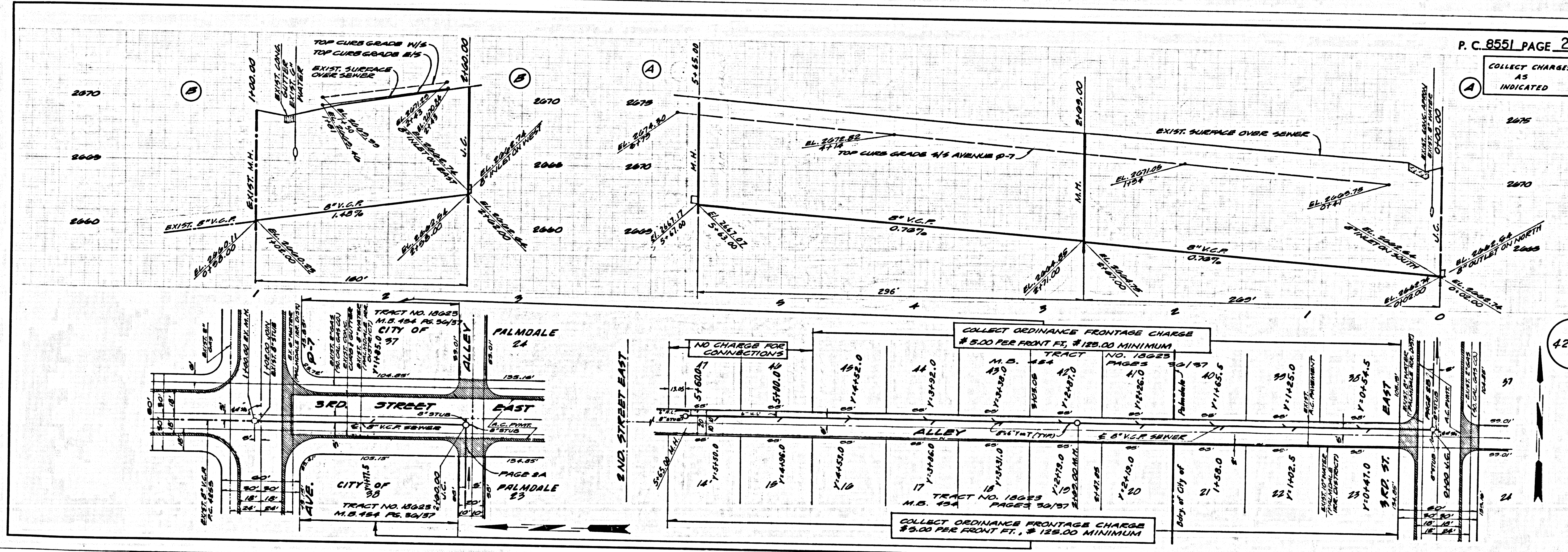
FOR LEGEND SEE PLAN NO. S-1

NOTE:
GRADES TO WHICH THIS IMPROVEMENT IS TO BE CONSTRUCTED ARE SHOWN ON PLANS AND PROFILES. GRADE POINTS FOR TOP OF CURBS, CENTER LINE OF STREETS, OR CENTER LINE OF ALLEYS ARE SHOWN BY CIRCLES ON PROFILES. AT ALL POINTS BETWEEN DESIGNATED ELEVATIONS ARE IN FEET ABOVE U.S.C. & G.S. MEAN LEVEL DATUM OF 1929.
USE GRADES AND DATA BETWEEN DESIGNATED GRADES AS SHOWN ON THESE PLANS UNLESS OTHERWISE NOTED.
CONSTRUCTION COSTS ARE BASED ON THE 1970-1971 STANDARD SPECIFICATIONS FOR PUBLIC WORKS, COUNTY OF LOS ANGELES, AND COUNTY ENGINEER'S STANDARD SPECIFICATIONS FOR CONSTRUCTION OF SEWERS AND SANITARY SEWERS.
APPROVAL OF THIS PLAN BY THE COUNTY OF LOS ANGELES DOES NOT CONSTITUTE A REPRESENTATION AS TO THE ACCURACY OF THE LOCATION OR THE EXISTENCE OR NON-EXISTENCE OF ANY UNDERGROUND UTILITY PIPE, OR STRUCTURE WITHIN THE LIMITS OF THIS PROJECT. THIS NOTE APPLIES TO ALL PAGES.
IF WORK IS TO BE DONE IN A CITY HIGHWAY, A PERMIT MUST BE OBTAINED FROM THE STATE OF CALIFORNIA, DIVISION OF HIGHWAYS, 120 SOUTH SPRING STREET, LOS ANGELES, CALIFORNIA.

COUNTY OF LOS ANGELES, CALIFORNIA
JOHN A. LAMBIE, COUNTY ENGINEER J. D. PARKHURST, CHIEF ENGINEER
APPROVED BY John A. Lambie 1/4/71 REGIONAL ENGINEER APPROVED BY J. D. Parkhurst 1/4/71 CHIEF ENGINEER

CHECKED BY R.R. K. Speck 1/4/71
REG. C.E. NO. 16742

J.N. 0370.79



P. C. 8551 PAGE 2
COLLECT CHARGES AS INDICATED

42390