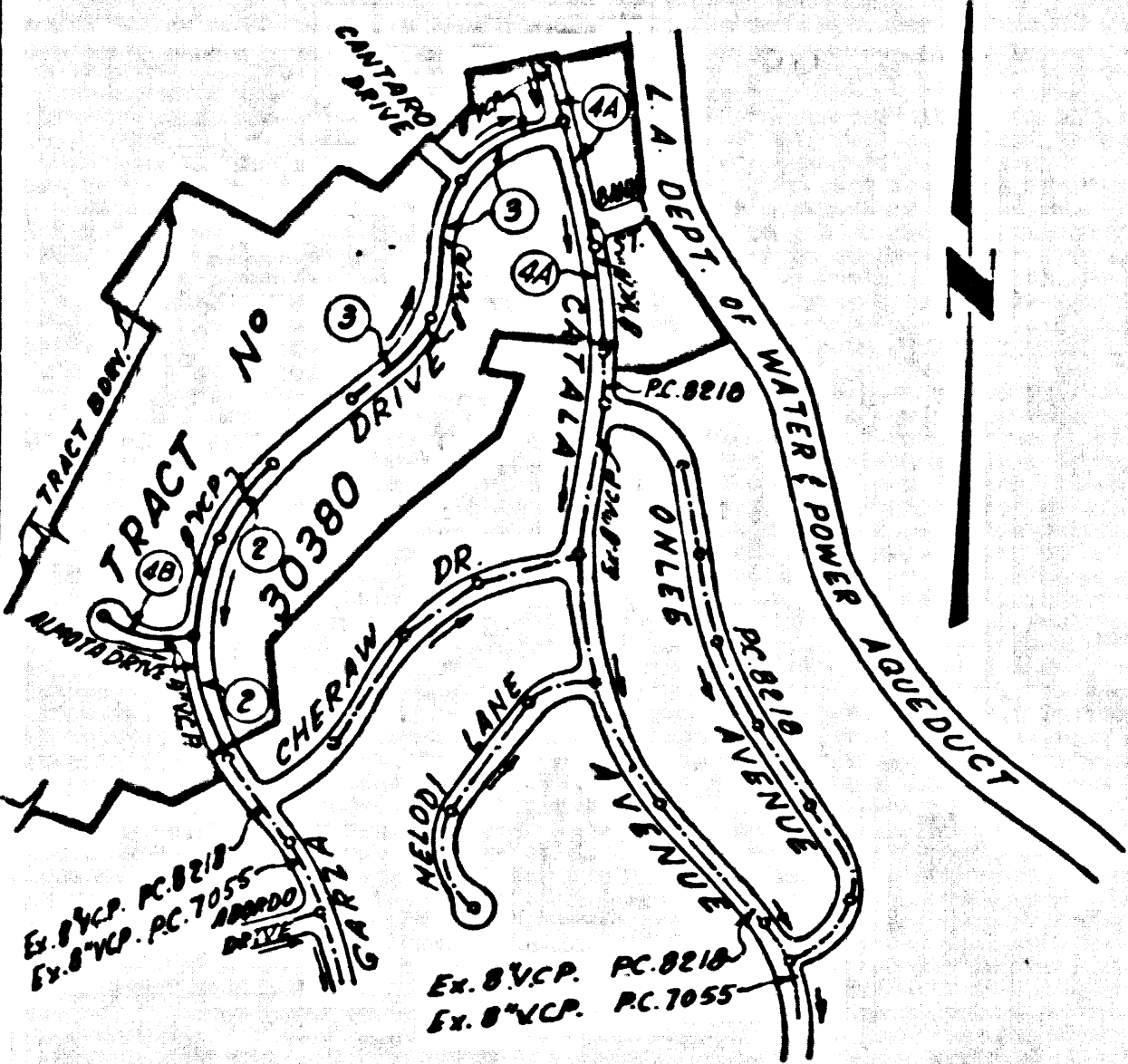


B.M. B.L. 1733 ELEV. 1186.900
 R.D.B.M. TAG CONC. FTG. OF
 BLOCK WALL 60 FT. E. BOUQUET
 C.N.K.D. NR. C/L PROD. SECO. C.M. ROAD
 NEWHALL QUAD. 1945



INDEX MAP
 SCALE: 1"=50'
 TRACT No. 30380
 P.C. 8561

NOTE: NUMBERS IN CIRCLE INDICATE PAGE NUMBER.

THE FOLLOWING LATEST REVISED STANDARD PLANS ON FILE IN THE OFFICE OF THE COUNTY ENGINEER SHALL APPLY IN THE CONSTRUCTION OF THIS PROJECT

LEGEND	
MINIMUM PUBLIC SAFETY REQUIREMENTS	S-1
BRICK MANHOLE	S-3
NONREINFORCED PRECAST CONCRETE MANHOLE	S-3A
LOCKING MANHOLE FRAME AND COVER	S-35
MANHOLE STEP	S-17
BEDDING FOR SEWER PIPE	S-21
CRADLING & ENCASUREMENT	S-23
WYE & TEE SUPPORT	S-26
ALLOWABLE TRENCH WIDTH	S-28
SPECIAL SUPPORT AND PROTECTION	S-29

Lol 65 is a Water Reservoir Site And Service Not Required

DOUBLE SCALE
 NEWHALL BLDG. DIST. NO. 8.2

- NOTES:
- PROVIDE STAKES ON THE PROPERTY LINE OR PROPERTY LINES PRODUCED AT RIGHT ANGLES TO THE SEWER LINE AT THE CENTER LINE OF EACH MANHOLE.
 - NO REPRESENTATIVE OF THE COUNTY ENGINEER WILL SURVEY OR LAY OUT ANY PORTION OF THE WORK.
 - THE PRIVATE ENGINEER SHALL FURNISH THE COUNTY ENGINEER WITH GRADE SHEETS AND STATIONING FOR ALL HOUSE LATERALS. ALL HOUSE LATERALS SHALL BE CONSTRUCTED IN A STRAIGHT ALIGNMENT AT RIGHT ANGLES FROM STATIONING PLAINLY MARKED, AS SHOWN ON THE PLANS. HOUSE LATERALS FROM CHIMNEYS SHALL NOT HAVE AN ANGLE OF LESS THAN 45° WITH THE MAIN LINE SEWER. ANY CHANGE IN ALIGNMENT SHALL BE REQUESTED BY WRITING BY THE PRIVATE ENGINEER.
 - THE PRIVATE ENGINEER SHALL FURNISH THE HOUSE LATERAL DEPTH AT THE PROPERTY LINE BELOW THE TOP OF CURB ELEVATION FOR EACH HOUSE LATERAL ON THE GRADE SHEET.
 - NO REVISIONS SHALL BE MADE IN THESE PLANS WITHOUT THE APPROVAL OF THE COUNTY ENGINEER.
 - THE CONTRACTOR SHALL NOTIFY THE CONSTRUCTION DIVISION BY TELEPHONE, MARSHON 6-27, EXT. 8152, AT LEAST TWENTY-FOUR HOURS BEFORE STARTING ANY WORK UNDER THIS CONTRACT.
 - ALL STRUCTURES SHALL BE EITHER BRICK MANHOLES PER S-3 OR PRECAST CONCRETE MANHOLES PER S-3A.
 - 7.5" x 7.5" BRANCHES MAY BE USED FOR CONNECTION TO MAIN LINE SEWERS, EXCEPT AS NOTED.
 - MANHOLE TOPS IN UNIMPROVED AREAS OR THAT TO BE IN THE UNIMPROVED AREAS SHALL BE AS NOTED.
 - USE EXTRA STRENGTH PIPE, ALL PIPE IS STANDARD SECTION EXCEPT AS NOTED.
 - VITRIFIED CLAY PIPE JOINTS SHALL BE TYPE "D", "D" OR "C" PER STANDARD SPECIFICATIONS SECTION 706-2.
 - IF A POWER POLE IS WITHIN THREE FEET OF THE SEWER, THE SEWER SHALL BE ENCASED, PER S-28, TWO FEET ON EACH SIDE FROM THE POINT OF INTERFERENCE.
 - IF DURING THE COURSE OF CONSTRUCTION IT IS DETERMINED THAT THERE IS LESS THAN FOUR FEET OF COVER OVER THE TOP OF A MAIN LINE OR HOUSE LATERAL V.C.P. SEWER WHICH IS NOT INDICATED ON THE PLANS, THE PIPE SHALL BE ENCASED PER S-28, UNLESS OTHERWISE APPROVED BY THE COUNTY ENGINEER.
 - HOUSE LATERALS TO BE CONSTRUCTED WITH INVERTS AT PROPERTY LINE 6 FEET BELOW CURB GRADE, "7" AS NOTED.
 - INSURANCE ALL TRENCHES WITHIN PAVED AREAS TO MEET L.A. COUNTY ROAD DEPT. OR CALIFORNIA STATE HIGHWAY REQUIREMENTS IN ACCORDANCE WITH PERMITS.
 - SEWERS TO BE TESTED FOR LEAKAGE PER SECTION 706-2.3-7 OF THE STANDARD SPECIFICATIONS.
 - REFER TO SECTION 7-10-4.1 OF THE STANDARD SPECIFICATIONS, REGARDING SAFETY ORDERS.
 - ALL JOINTS BETWEEN CAST IRON PIPE AND VITRIFIED CLAY PIPE SHALL BE MADE WITH A RUBBER SLEEVE JOINT TYPE "C" OR "D", (WITH BUSHINGS IF NECESSARY) PER STANDARD SPECIFICATIONS, SECTION 706-2.

County Sanitation Districts shall be notified prior to the following so that required inspection can be made (Phone 337-1023 - 858-1161)

No connections for the disposal of industrial wastes shall be made to sewers shown on these drawings without written permission from the Chief Engineer and General Manager of the County Sanitation Districts.

NOTICE TO CONTRACTOR

The existence and location of any underground utility pipes or structures shown on these plans are obtained by a search of the available records. To the best of our knowledge there are no existing utilities except as shown on these plans. The contractor is required to take due precautionary measures to protect the utility lines shown on these plans.

COLLECT CHARGES AS INDICATED

PROFILE, ALIGNMENT AND GRADE OF
 SANITARY SEWERS P.C. 8561
 CONSTRUCTED IN PAGE 1

TRACT No. 30380

PRIVATE CONTRACT NO. 8561
 INDEX 2703125
 W.S. 62

2 SHEETS, 4 PAGES
 SCALE: 1"=8' APRIL, 1971

PREPARED IN THE OFFICES OF
 V. T. N. LOS ANGELES
 8919 VAN NUYS BLVD., VAN NUYS, CALIFORNIA
 BY: John B. Oles
 REG. C. E. NO. 15242

42677

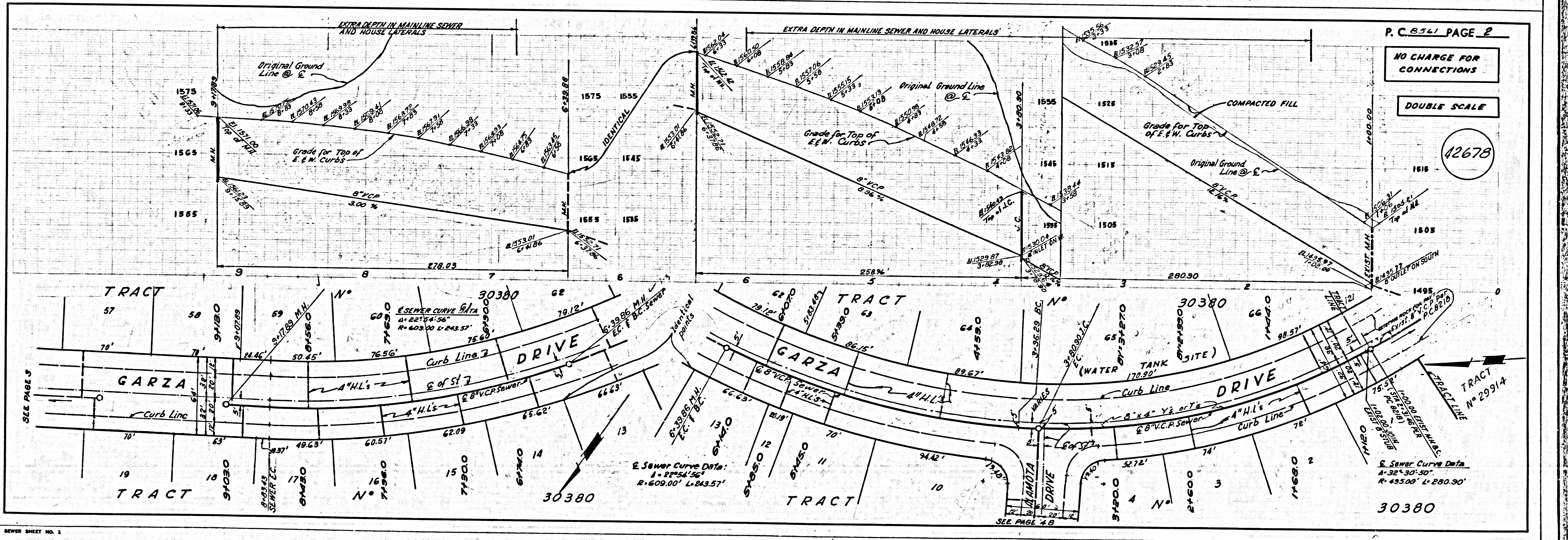
FOR LEGEND SEE PLAN NO. S-1

NOTE: GRADES TO WHICH THE IMPROVEMENT IS TO BE CONSTRUCTED ARE SHOWN ON PLANS AND PROFILES. GRADE POINTS FOR TOP OF CURBS, CENTER LINE OF STREETS, OR CENTER LINE OF ALLEYS ARE SHOWN BY CIRCLES ON PROFILES. AT ALL POINTS BETWEEN DESIGNATED POINTS THE GRADE SHALL BE ESTABLISHED SO AS TO CONFORM TO A STRAIGHT LINE DRAWN BETWEEN SAID DESIGNATED POINTS. ELEVATIONS ARE IN FEET ABOVE U.S.C. & G.S. SEA LEVEL DATUM OF 1929.

COUNTY OF LOS ANGELES, CALIFORNIA
 HARVEY T. BRANTZ, COUNTY ENGINEER
 J. D. PARKHURST, CHIEF ENGINEER
 CA. SAN. DIST. NO. 26
 APPROVED BY: [Signature] APPROVED BY: [Signature]
 PROFESSIONAL ENGINEER OFFICE ENGINEER

CHECKED BY: [Signature] 4-19-71
 REG. C.E. NO. 14330

J.N. 023002



P.C. 8561 PAGE 2
 NO CHARGE FOR CONNECTIONS
 DOUBLE SCALE

42678

