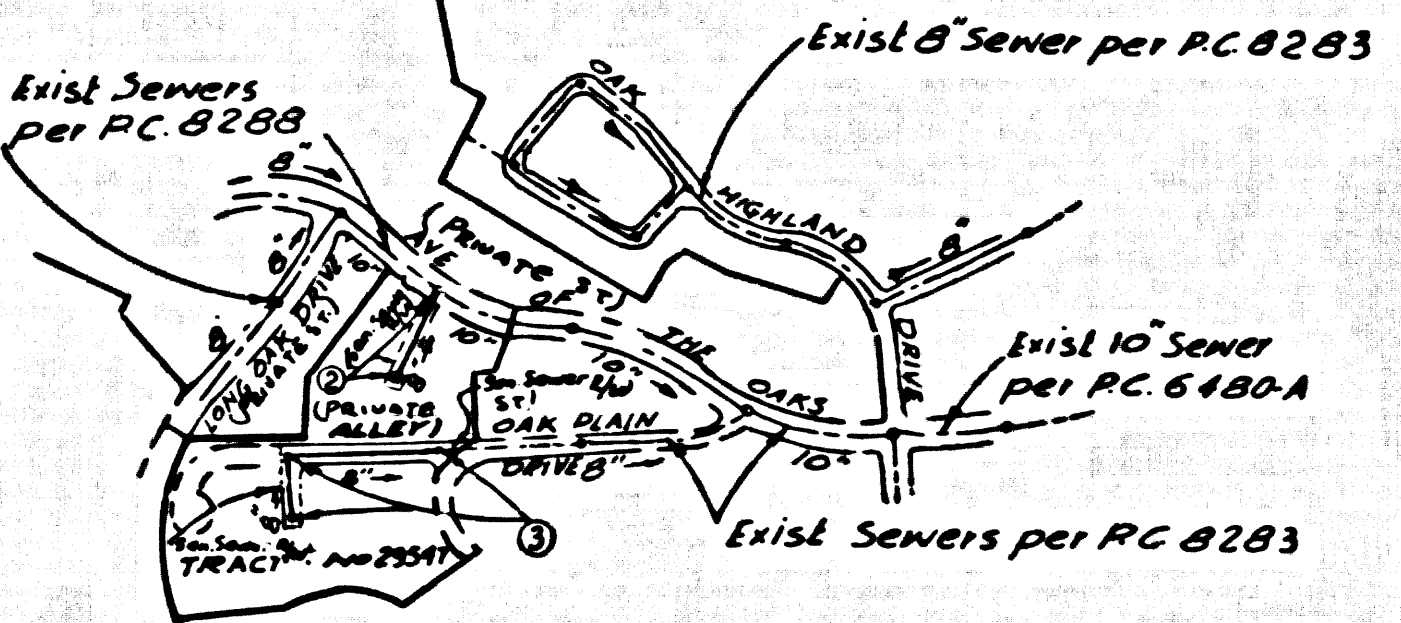
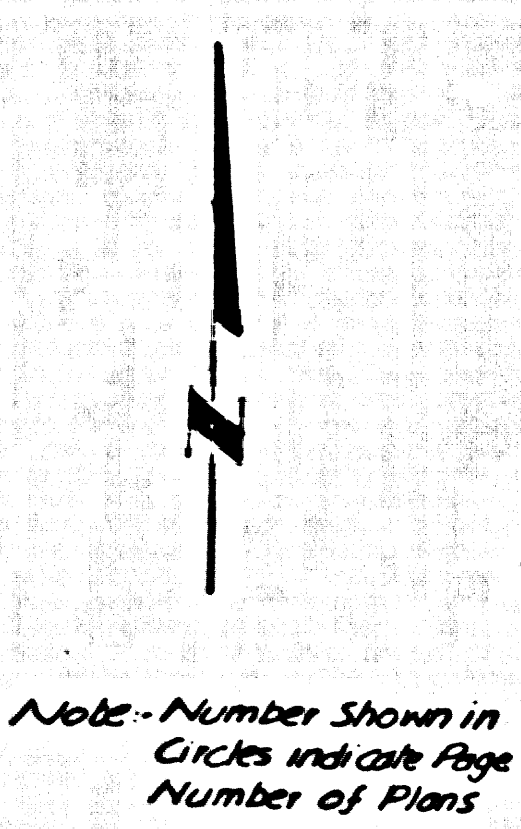


PC 8566 PAGE 3
NO CHARGE CONNECTIONS

PAGE

B.M. 812888 ELEV. 1530654
 R.D. B.M. 812888 ELEV. 1530654
 E. C. L. Int. 1965
 QUAD. 1965



INDEX MAP
 Scale 1" = 500'
 P.C. 8566

No connections for the disposal of industrial wastes shall be made to sewers shown on these drawings without written permission from the Chief Engineer and General Manager of the County Sanitation Districts.

County Sanitation Districts shall be notified prior to the following to that required inspection can be made (Phone 337-1025 - 638-1181)

Acceptance of the project.

19. Trench Backfill
 (a) Backfill trench and replace after earth removed 30 or 40 to achieve the natural unfinished grades and slopes shown on the grading plan approved for this development by the Building and Safety Division
 (b) All backfill shall be compacted to a minimum of 90% of maximum density per A.S.T.M. Standard method of Test D 593-57 as modified. Acceptance Certification of such compaction shall be submitted to the Construction Division.

20. Figures in circles indicate depth of house lateral below curbs at property line.

NOTICE TO CONTRACTOR
 The existence and location of any underground utility pipes or structures shown on these plans are obtained by a search of the available records. To the best of my knowledge there are no existing utilities except as shown on these plans. The contractor is required to take due precautionary measures to protect the utility lines shown and any other lines not recorded or not shown on these plans.

J. G. Hard
 R.C. 13559

COLLECT CHARGES AS INDICATED

NEW HALL BLDG. DIST. NO. 82

- HOUSE LATERALS TO BE CONSTRUCTED WITH BRICKS AT PROPERTY LINE & FIVE FEET BELOW CURB GRADE EXCEPT AS NOTED.
- PROVIDE STAGES ON THE PROPERTY LINE OR PROPERTY LINES PROCEEDED AT RIGHT ANGLES TO THE SEWER LINE AT THE CENTER LINE OF EACH MANHOLE.
- NO REPRESENTATIVE OF THE COUNTY ENGINEER WILL SURVEY OR LAY OUT ANY PORTION OF THE WORK.
- THE PRIVATE ENGINEER SHALL FURNISH THE COUNTY ENGINEER WITH GRADE SHEETS AND STATIONING FOR ALL HOUSE LATERALS AND "T" OR "Y" BRANCHES AND SHALL PROVIDE STAGES FOR THESE AT THEIR PROPER LOCATIONS WITH STATIONING PLAINLY MARKED. ALL HOUSE LATERALS SHALL BE CONSTRUCTED IN A STRAIGHT ALIGNMENT AT RIGHT ANGLES FROM THE MAIN LINE SEWER EXCEPT AS SHOWN ON THE PLANS. HOUSE LATERALS FROM CHIMNEYS SHALL NOT HAVE AN ANGLE OF LESS THAN 45° WITH THE MAIN LINE SEWER. ANY CHANGE IN ALIGNMENT SHALL BE REQUESTED BY VISITING BY THE PRIVATE ENGINEER.
- THE PRIVATE ENGINEER SHALL FURNISH THE HOUSE LATERAL DEPTH AT THE PROPERTY LINE BELOW THE TOP OF CURB ELEVATION FOR EACH HOUSE LATERAL ON THE GRADE SHEET.
- NO REVISIONS SHALL BE MADE IN THESE PLANS WITHOUT THE APPROVAL OF THE COUNTY ENGINEER.
- THE CONTRACTOR SHALL NOTIFY THE CONSTRUCTION DIVISION BY TELEPHONE, MARSHEN 9-4747, EXT. 8128, AT LEAST TWENTY-FOUR HOURS BEFORE PLACING ANY WORK UNDER THIS CONTRACT.
- ALL STRUCTURES SHALL BE EITHER BRICK MANHOLES PER 2-2 OR PRECAST CONCRETE MANHOLES PER 2-3 EXCEPT AS NOTED.
- "T" OR "Y" BRANCHES MAY BE USED FOR CONNECTIONS TO MAINTAIN SEWER EXCEPT AS NOTED.
- MANHOLE TOPS IN UNIMPROVED PORTIONS OF WAY TO BE SIX INCHES ABOVE FINISHED GRADE.
- USE EXTRA STRENGTH PIPE. ALL PIPE IS STANDARD DEPTH EXCEPT AS NOTED.
- VERTICAL CLAY PIPE JOINTS SHALL BE TYPE "T", "Y", OR "B" PER STANDARD SPECIFICATIONS SECTION 286-2.
- IF A POWER POLE IS WITHIN THREE FEET OF THE SEWER, THE SEWER SHALL BE ENCASED, PER 2-28, TWO FEET ON EACH SIDE FROM THE POINT OF INTERFERENCE.
- RESURFACE ALL TRENCHES WITHIN PAVES AREAS TO MEET L.A. COUNTY ROAD DEPT. OR CALIFORNIA STATE HIGHWAY REQUIREMENTS IN ACCORDANCE WITH PERMITS.
- SEWERS TO BE TESTED FOR LEAKAGE PER SECTION 286-2.2.7 OF THE STANDARD SPECIFICATIONS.
- SEWERS TO BE TESTED PER 2-24.2 OF THE STANDARD SPECIFICATIONS, 286-2.2.4.2 SANITARY ORDERS.
- ALL JOINTS BETWEEN CLAY PIPE AND VERTICAL CLAY PIPE SHALL BE MADE WITH A RUBBER GASKET JOINT, TYPE "C" OR "D", BRICKS OTHERWISE APPROVED BY THE COUNTY ENGINEER.
- IF BURNING THE COURSE OF CONSTRUCTION IT IS DETERMINED THAT THERE IS LESS THAN FOUR FEET OF COVER OVER THE TOP OF A MAIN LINE OR HOUSE LATERAL "C.C." SEWER WHICH IS NOT INDICATED ON THE PLANS, THE PIPE SHALL BE ENCASED PER 2-25 BRICKS OTHERWISE APPROVED BY THE COUNTY ENGINEER.
- RESURFACE ALL TRENCHES WITHIN PAVES AREAS TO MEET L.A. COUNTY ROAD DEPT. OR CALIFORNIA STATE HIGHWAY REQUIREMENTS IN ACCORDANCE WITH PERMITS.
- SEWERS TO BE TESTED FOR LEAKAGE PER SECTION 286-2.2.7 OF THE STANDARD SPECIFICATIONS.
- SEWERS TO BE TESTED PER 2-24.2 OF THE STANDARD SPECIFICATIONS, 286-2.2.4.2 SANITARY ORDERS.
- ALL JOINTS BETWEEN CLAY PIPE AND VERTICAL CLAY PIPE SHALL BE MADE WITH A RUBBER GASKET JOINT, TYPE "C" OR "D", BRICKS OTHERWISE APPROVED BY THE COUNTY ENGINEER.

THE FOLLOWING LATEST REVISED STANDARD PLANS ON FILE IN THE OFFICE OF THE COUNTY ENGINEER SHALL APPLY IN THE CONSTRUCTION OF THIS PROJECT.

GROUND	2-1
MINIMUM PUBLIC SAFETY REQUIREMENTS	2-2
BRICK MANHOLES	2-3
NON-REINFORCED PRECAST CONCRETE MANHOLES	2-3a
LOCKING MANHOLE FRAMES AND COVERS	2-35
STANDARD MANHOLE STEP	2-37
RODDING FOR SEWER PIPE	2-38
CLEANING AND INCAMMURATING	2-39
WYE OR TEE SUPPORT	2-39
ALLOWABLE TRENCH WIDTHS	2-39

PROFILE, ALIGNMENT AND GRADE OF
 SANITARY SEWERS P.C. 8566
 CONSTRUCTED IN PAGE 1

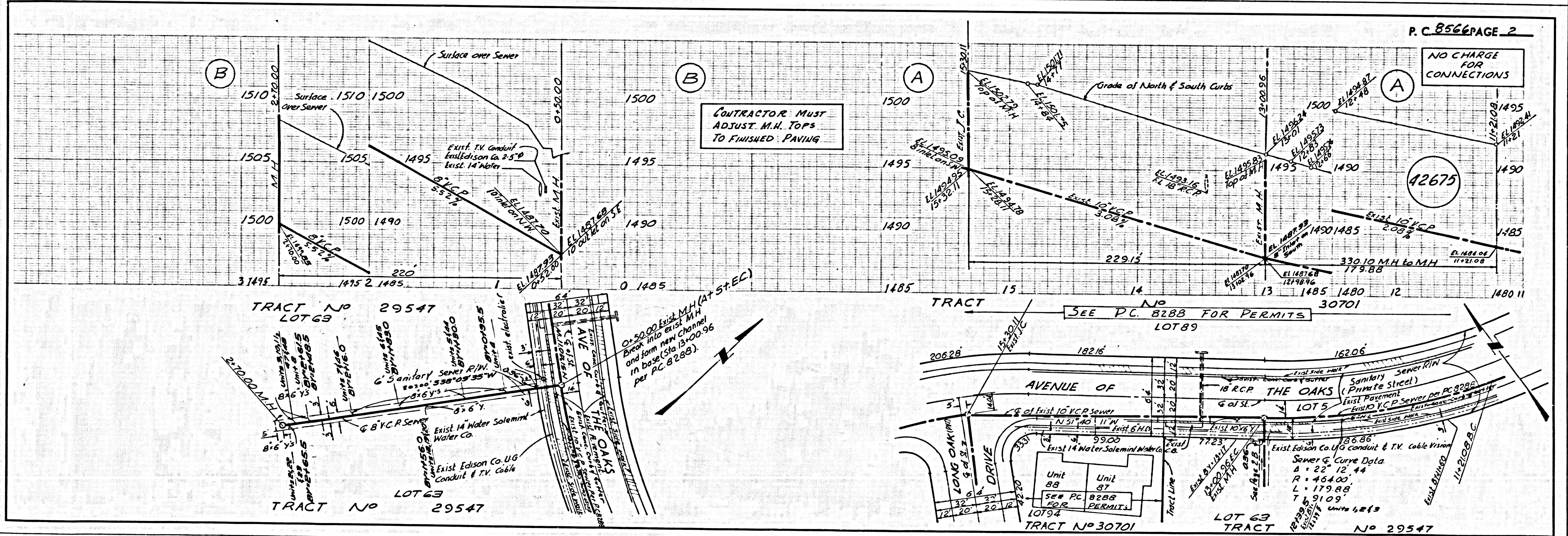
TRACT NO. 29547
 PRIVATE CONTRACT NO. 8566
 INDEX 2555141
 W.S. 62

2 SHEETS; 3 PAGES
 SCALE: HORIZ. 1" = 40' VERT. 1" = 4'
 JANUARY, 1971
 PREPARED IN THE OFFICES OF
 SIXLAND ENGINEERING ASSOCIATES
J. G. Hard
 REG. C. E. NO. 9553

NOTE:
 GRADES TO WHICH THE IMPROVEMENTS ARE TO BE CONSTRUCTED ARE SHOWN ON PLANS AND PROFILE. GRADE POINTS FOR TOP OF CURB, CENTER LINE OF STREET, OR CENTER LINE OF ALLEYS ARE SHOWN BY CIRCLES ON PROFILES. AT ALL POINTS BETWEEN BENCHMARK POINTS THE GRADE SHALL BE ESTABLISHED SO AS TO CONFORM TO A STRAIGHT LINE DRAWN BETWEEN SAID BENCHMARK POINTS. ELEVATIONS ARE IN FEET ABOVE U.S.C. & G.S. MEAN SEA LEVEL, DATUM OF 1929.
 THESE PLANS SHALL BE CONSTRUCTED ACCORDING TO THE STANDARD SPECIFICATIONS FOR PUBLIC WORKS CONSTRUCTION (1950 EDITION) AND SHALL BE PROSECUTED ONLY BY THE COUNTY ENGINEER.
 BEFORE WORK CAN BE STARTED, THE CONTRACTOR MUST OBTAIN A PERMIT TO EXCAVATE IN COUNTY STREETS FROM THE L.A. COUNTY ROAD DEPT., DISTRICT OFFICE NO. 1, 5, 11, AND PAY A FEE TO THE COUNTY ENGINEER, ROOM 208, COUNTY ENGINEERING, BUILDING, 100 WEST SECOND STREET, LOS ANGELES, CALIFORNIA. REGIONAL OFFICE, SUPPLEMENT TO COVER THE COST OF CONSTRUCTION INSPECTION AND RECORD PLANS.
 APPROVAL OF THIS PLAN BY THE COUNTY OF LOS ANGELES DOES NOT CONSTITUTE A REPRESENTATION AS TO THE ACCURACY OF THE LOCATION OF OR THE EXISTENCE OR NON-EXISTENCE OF ANY UNDERGROUND UTILITY PIPE, OR STRUCTURE WITHIN THE LIMITS OF THIS PROJECT. THIS NOTE APPLIES TO ALL PAGES.
 IF WORK IS TO BE DONE IN A STATE HIGHWAY, A PERMIT MUST BE OBTAINED FROM THE STATE OF CALIFORNIA, DIVISION OF HIGHWAYS, 120 SOUTH BRIDGE STREET, LOS ANGELES, CALIFORNIA.

COUNTY OF LOS ANGELES, CALIFORNIA
 JOHN A. LAMBIE, COUNTY ENGINEER J. D. PARKHURST, CHIEF ENGINEER
 APPROVED BY *J. G. Hard* DATE 1/14/71 APPROVED BY *J. D. Parkhurst* DATE 1/14/71
 REGIONAL ENGINEER DISTRICT ENGINEER
 CHECKED BY *R. J. Williams* DATE 1-14-71
 REG. C. E. NO. 14230

J.N. 0250.02



CONTRACTOR MUST ADJUST M.H. TOPS TO FINISHED PAVING

NO CHARGE FOR CONNECTIONS

SEE P.C. 8288 FOR PERMITS