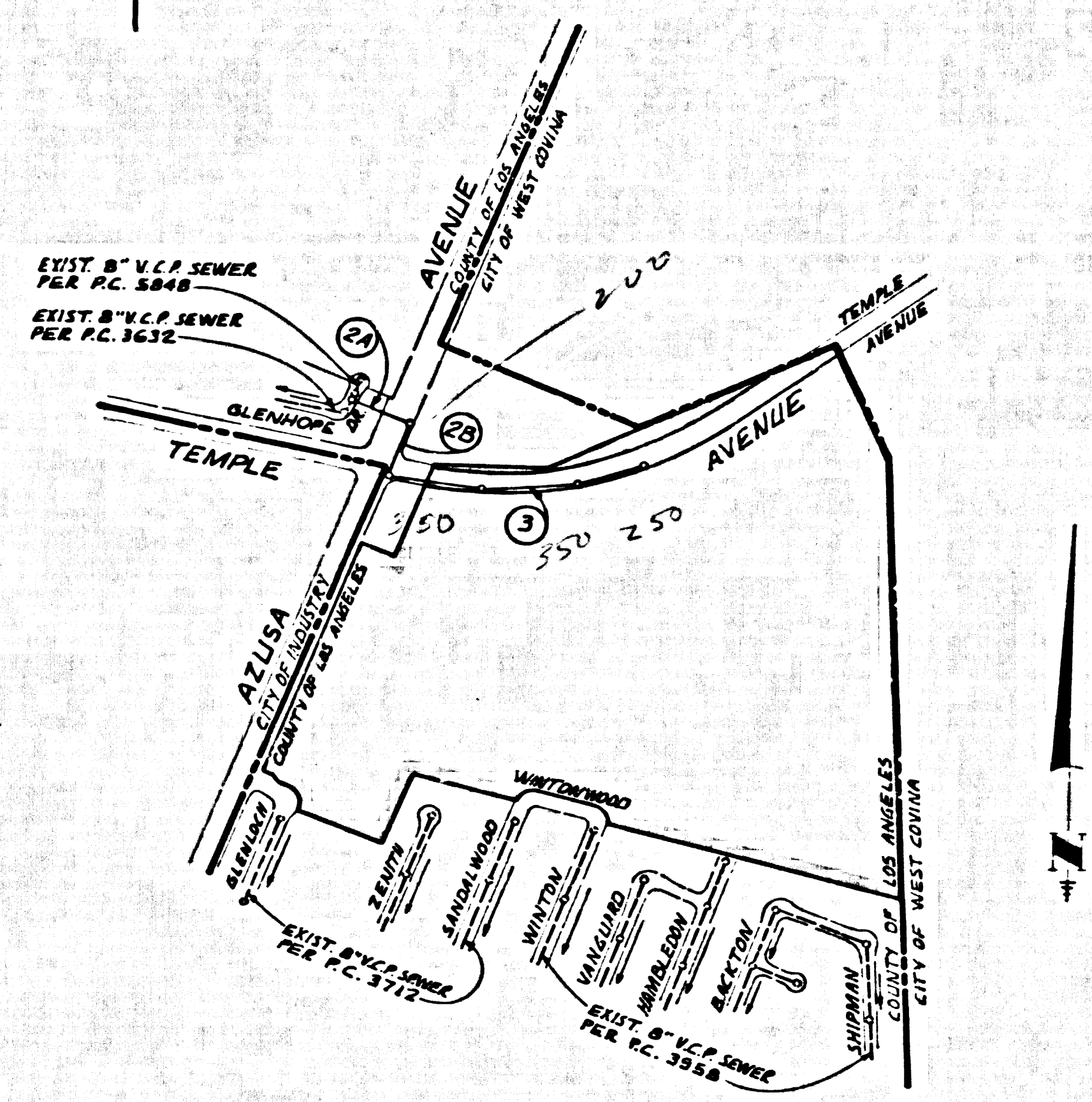


B.M. B.G. 3628 ELEV. 450.189
 L. & B.M. 1 FT. S. B.C.R. 52' N. & 45' E.
 & INT. AZUSA AVE. & GEMINI ST.
 COVINA QUAD. 1970

PRIVATE ENGINEERS NOTICE TO CONTRACTOR

The existence and approximate location of underground utilities or structures shown on these plans were determined by a search of the available Public Records. To the best of our knowledge, there are no existing underground utilities or structures except as shown on these plans. The Contractor is required to take due precautionary measures to protect the utilities or structures not of record or not shown on these plans.

Robert R. Flores
 ROBERT R. FLORES R.C.E. 11349
 5-7-71 DATE



KEY MAP
 P.M. 2117
 SCALE: 1"=600'

"FULL COMPLIANCE WITH SECTION 306-1.9.3. OF THE SPECIAL PROVISIONS WILL BE REQUIRED FOR BACKFILL IN STREETS. CERTIFICATION OF BACKFILL COMPACTION AND EQUIVALENTS BY A QUALIFIED, REGISTERED TESTING LABORATORY SHALL BE PROVIDED BY THE PERMITTEE PRIOR TO THE ISSUANCE OF A CERTIFICATE OF PARTIAL ACCEPTANCE."

SEWER SERVICE FOR LOTS 3 & 4 P.M. 2117
 PAGE 3 IS NOT REQUIRED UNDER P.C. 8975

GENERAL NOTES:

- ELEVATIONS ARE IN FEET ABOVE U.S.C. & G.S. SEA LEVEL DATUM OF 1929.
- NO INTERFERENCES SHALL BE MADE IN THESE PLANS WITHOUT THE APPROVAL OF THE COUNTY ENGINEER.
- NO REPRESENTATIVE OF THE COUNTY ENGINEER WILL SURVEY OR LAY OUT ANY PORTION OF THE WORK.
- GRADES TO WHICH THIS IMPROVEMENT IS TO BE CONSTRUCTED ARE SHOWN ON PLANS AND INCLUDE GRADE POINTS FOR TOP OF CURBS, CENTER LINE OF STREETS, OR CENTER LINE OF ALLEYS ARE SHOWN BY CIRCLES ON PROFILES AT ALL POINTS BETWEEN DESIGNATED POINTS.
- THE PRIVATE ENGINEER SHALL FURNISH THE COUNTY ENGINEER WITH GRADE SHEETS AND STATIONING FOR ALL HOUSE LATERALS AND 12" OR 18" MANHOLES AND SHALL PROVIDE STAKES FOR THEM AT THEIR PROPER LOCATIONS WITH STATIONING PLAINLY EXCEPT AS SHOWN ON THE PLANS. HOUSE LATERALS FROM CHIMNEYS SHALL NOT HAVE AN ANGLE OF LESS THAN 45° WITH THE MAIN LINE SEWER. ANY CHANGE IN STATIONING SHALL BE REQUESTED IN WRITING BY THE PRIVATE ENGINEER.
- THE PRIVATE ENGINEER SHALL FURNISH THE HOUSE LATERAL DEPTH AT THE PROPERTY LINE BELOW THE TOP OF CURB ELEVATION FOR EACH HOUSE LATERAL ON THE GRADE SHEET.
- WHERE WORK CAN BE STARTED, THE CONTRACTOR MUST OBTAIN A PERMIT TO EXCAVATE IN COUNTY STREETS FROM THE L.A. COUNTY ROAD DEPT., DISTRICT OFFICE NO. 1 AND PAY A FEE TO THE COUNTY ENGINEER, ROOM 180 COUNTY ADMIN. OFFICE, 3150 E. IMPERIAL HWY., DOWNHAY, OR 201 E. BOWLTA AVE., SAN DIMAS, REGIONAL OFFICE, TO COVER THE COST OF CONSTRUCTION INSPECTION AND RECORD PLANS.
- IF WORK IS TO BE DONE IN A STATE HIGHWAY, A PERMIT MUST BE OBTAINED FROM THE STATE OF CALIFORNIA, DIVISION OF HIGHWAYS, 120 SOUTH SPRING STREET, LOS ANGELES, CALIFORNIA.
- APPROVAL OF THIS PLAN BY THE COUNTY OF LOS ANGELES DOES NOT CONSTITUTE A REPRESENTATION AS TO THE ACCURACY OF THE LOCATION OF OR THE EXISTENCE OR NON-EXISTENCE OF ANY UNDERGROUND UTILITY PIPE, OR STRUCTURE WITHIN THE LIMITS OF THIS PROJECT. THIS NOTE APPLIES TO ALL PAGES.
- REFER TO SECTION 7-16.4.3 OF THE STANDARD SPECIFICATIONS, REGARDING SAFETY CUES.

County Sanitation Districts shall be notified prior to the following so that required easements can be made (Phone 537-1025 x 838-1181).
 Acceptance of the project.

CONSTRUCTION NOTES:

- WORK SHALL BE CONSTRUCTED ACCORDING TO THE STANDARD SPECIFICATIONS FOR PUBLIC WORKS CONSTRUCTION (1975 EDITION WITH 1971 SUPPLEMENT) AND COUNTY ENGINEER SPECIAL PROVISIONS FOR THE CONSTRUCTION OF SANITARY SEWERS DATED APRIL 1, 1970 AND SHALL BE PROSECUTED ONLY IN THE PRESENCE OF THE COUNTY ENGINEER.
- THE CONTRACTOR SHALL NOTIFY THE CONSTRUCTION DIVISION BY TELEPHONE, IN LANSING 7-4747, EXT. 8158, AT LEAST TWENTY-FOUR HOURS BEFORE STAKING ANY WORK UNDER THIS CONTRACT.
- HOUSE LATERALS TO BE CONSTRUCTED WITH INVERTS AT PROPERTY LINE 4 FEET BELOW CURB GRADE EXCEPT AS NOTED.
- WYE OR THE BRANCHES MAY BE USED FOR CONNECTIONS TO MAINLINE SEWERS EXCEPT AS NOTED.
- ALL STRUCTURES SHALL BE RIVER BRICK MANHOLES PER S-23 OR PRECAST CONCRETE MANHOLES PER S-24, EXCEPT AS NOTED.
- PROVIDE STAKES ON THE PROPERTY LINE OR PROPERTY LINES PRODUCE AT RIGHT ANGLES TO THE SEWER LINE AT THE CENTER LINE OF EACH MANHOLE.
- MANHOLES FOR IN UNIMPROVED RIGHTS OF WAY TO BE SIX INCHES ABOVE FINISHED GRADE.
- WITHEPVC CLAY PIPE JOINTS SHALL BE TYPE "T", "P", OR "D" PER STANDARD SPECIFICATIONS SECTION 306-2.
- IF A POWER POLE IS WITHIN THREE FEET OF THE SEWER, THE SEWER SHALL BE ENCASED, PER S-23, CASE II, TWO FEET ON EACH SIDE FROM THE POINT OF INTERFERENCE.
- IF DURING THE COURSE OF CONSTRUCTION IT IS DETERMINED THAT THERE IS LESS THAN FOUR FEET OF COVER OVER THE TOP OF A MAIN LINE OR HOUSE LATERAL V.C.P. SEWER WHICH IS NOT INDICATED ON THE PLANS, THE PIPE SHALL BE ENCASED PER S-23, CASE II UNLESS OTHERWISE APPROVED BY THE COUNTY ENGINEER.
- ALL JOINTS BETWEEN CAST IRON PIPE AND WITHEPVC CLAY PIPE SHALL BE MADE WITH A RUBBER SLEEVE JOINT, TYPE "C" OR "B", WITH BUSHING IF NECESSARY PER STANDARD SPECIFICATIONS, SECTION 306-2.
- SEWERS TO BE TESTED FOR LEAKAGE PER SECTION 306-2.3.7 OF THE STANDARD SPECIFICATIONS AND SPECIAL PROVISIONS.
- RESURFACE ALL TRENCHES WITHIN PAVED AREAS TO MEET L.A. COUNTY ROAD DEPT. OR CALIFORNIA STATE HIGHWAY REQUIREMENTS IN ACCORDANCE WITH PERMITS.
- THE PERMITS FROM THE L.A. COUNTY ROAD DEPT. WILL HAVE LIMITATIONS ON HOURS OF CONSTRUCTION AND SPECIAL PAVING AND BACK FILL REQUIREMENTS. IT SHALL BE THE CONTRACTOR'S RESPONSIBILITY TO SATISFY SAID REQUIREMENTS.

PROFILE, ALIGNMENT AND GRADE OF
SANITARY SEWERS PAGE 1

CONSTRUCTED TO SERVE
 P.M. 2117

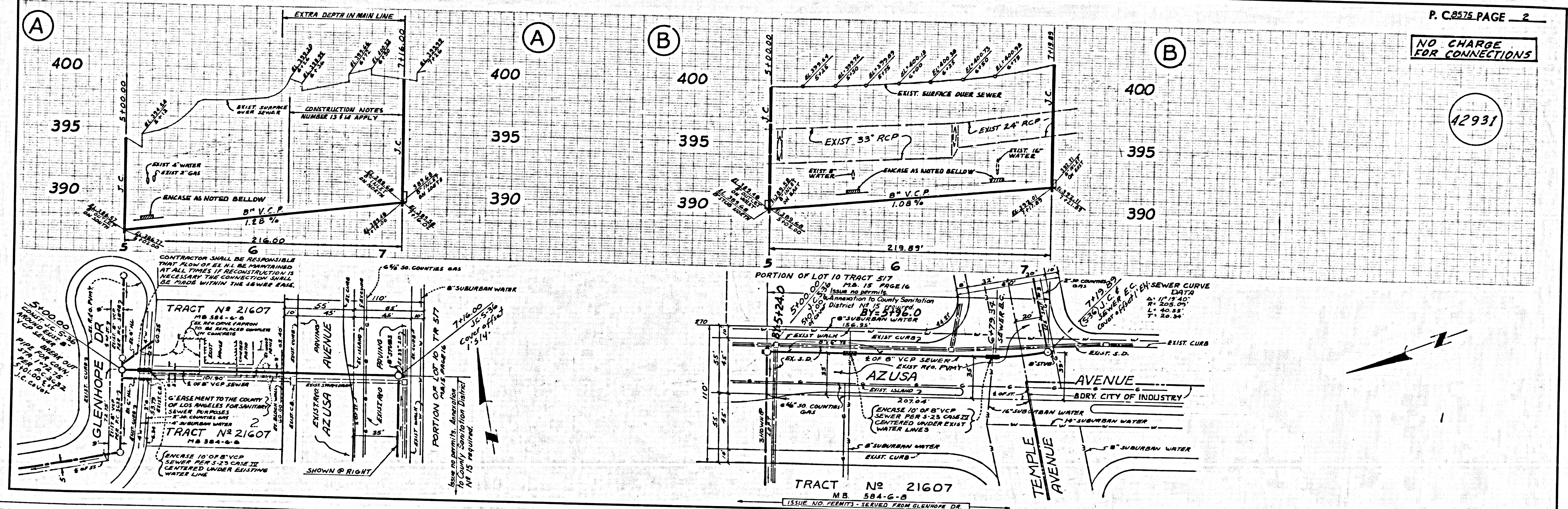
PRIVATE CONTRACT NO. 8575

W.S. 38-C2
 2 SHEETS, 3 PAGES
 SCALE: VERT. 1"=6' HORIZ. 1"=60'
 APRIL, 1971
 PREPARED IN THE OFFICES OF
 KEMMERER ENGINEERING CO. INC.
 6705 S. PHOENIX AVE., WHITTIER, CALIF. 90606
 BY: Robert R. Flores
 REG. C. E. No. 11349

THE FOLLOWING LATEST REVISED STANDARD PLANS ON FILE IN THE OFFICE OF THE COUNTY ENGINEER SHALL APPLY IN THE CONSTRUCTION OF THIS PROJECT.

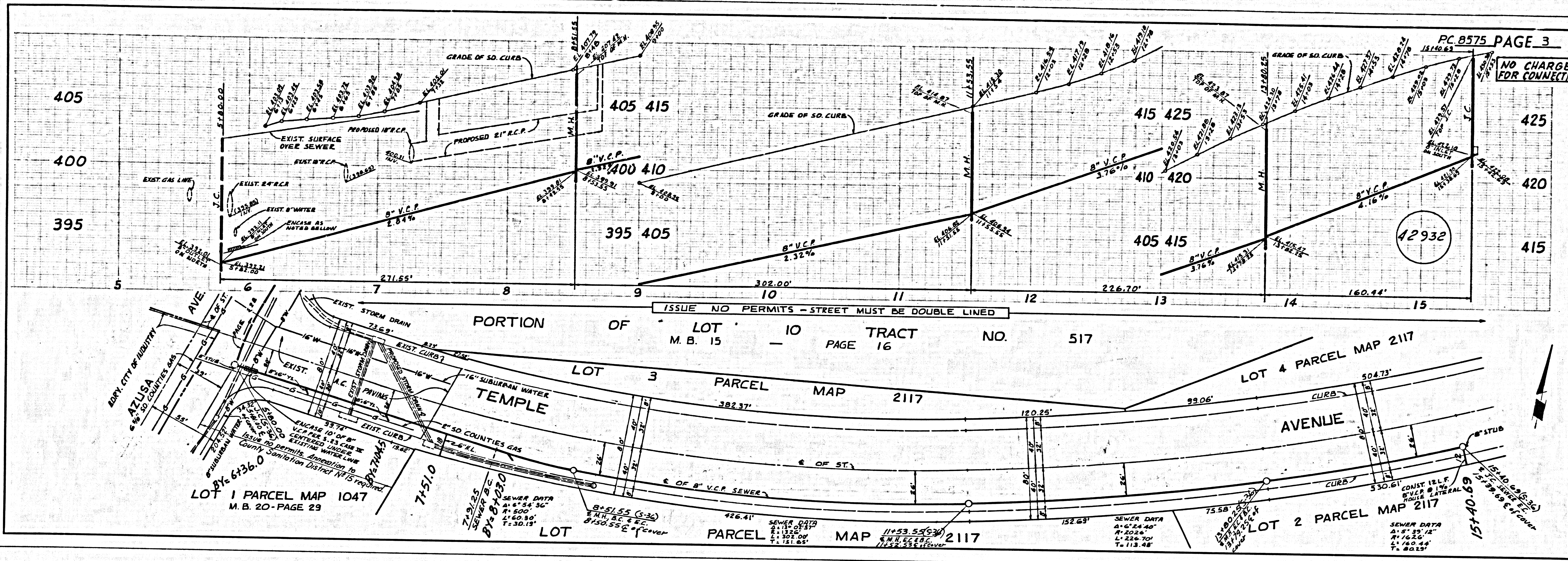
ASPHALT	5-1
MINIMUM PUBLIC SAFETY ENCLOSURES	5-2
BRICK MANHOLE	5-3
STANDARD MANHOLE STEP	5-4
BROOKING FOR SEWER PIPE	5-5
CHASING AND ENCASING	5-6
WYE OR THE BRANCH	5-7
ALLOWABLE TRENCH WIDTHS	5-8
LOCKING MANHOLE FRAME AND COVER	5-9
NON-REINFORCED PRECAST CONCRETE MANHOLE	5-10

COUNTY OF LOS ANGELES, CALIFORNIA
 HARVEY T. BRANDT COUNTY ENGINEER JOHN D. PARKHURST, CHIEF ENGINEER
 APPROVED: [Signature] REGIONAL ENGINEER APPROVED: [Signature] CIVIL ENGINEER
 CHECKED: Thomas E. Howard DATE: 5/1/71
 NO. CA. NO. 19156
 L.A. PUENTE BLDG. DIST. 20 J.N. 0370.87



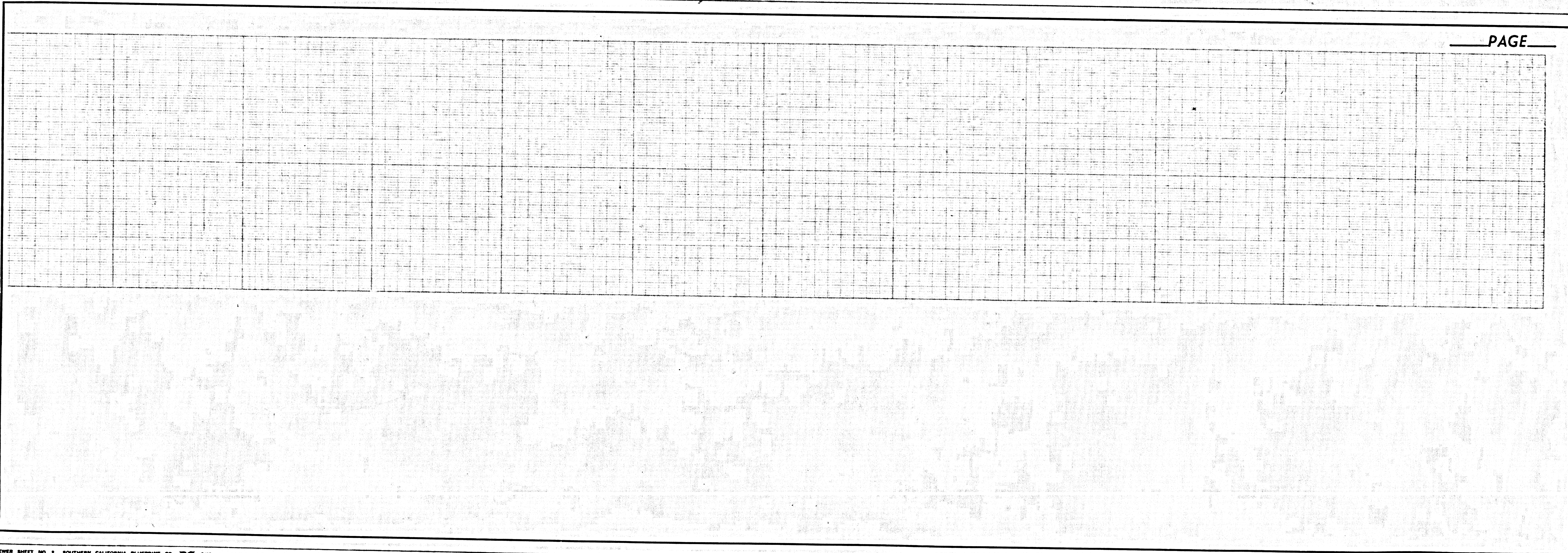
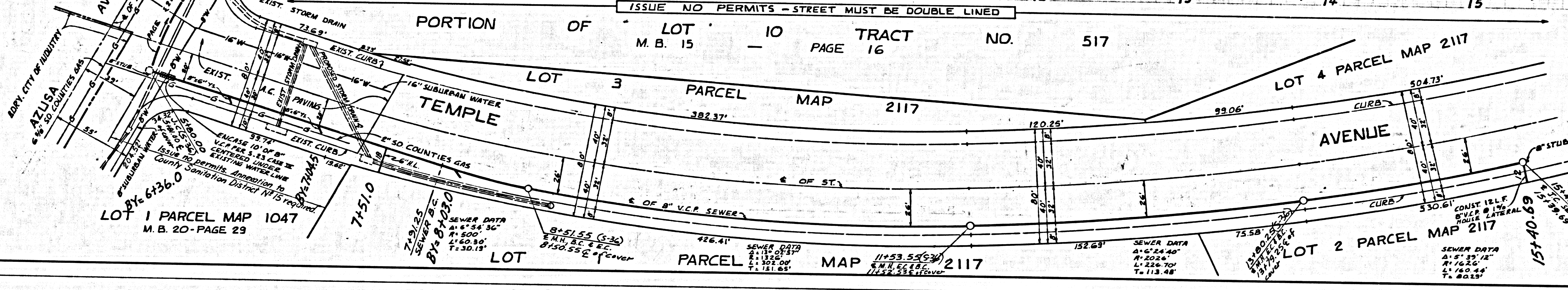
NO CHARGE FOR CONNECTIONS

42931



PC 8575 PAGE 3
NO CHARGE FOR CONNECTION

ISSUE NO PERMITS - STREET MUST BE DOUBLE LINED



PAGE