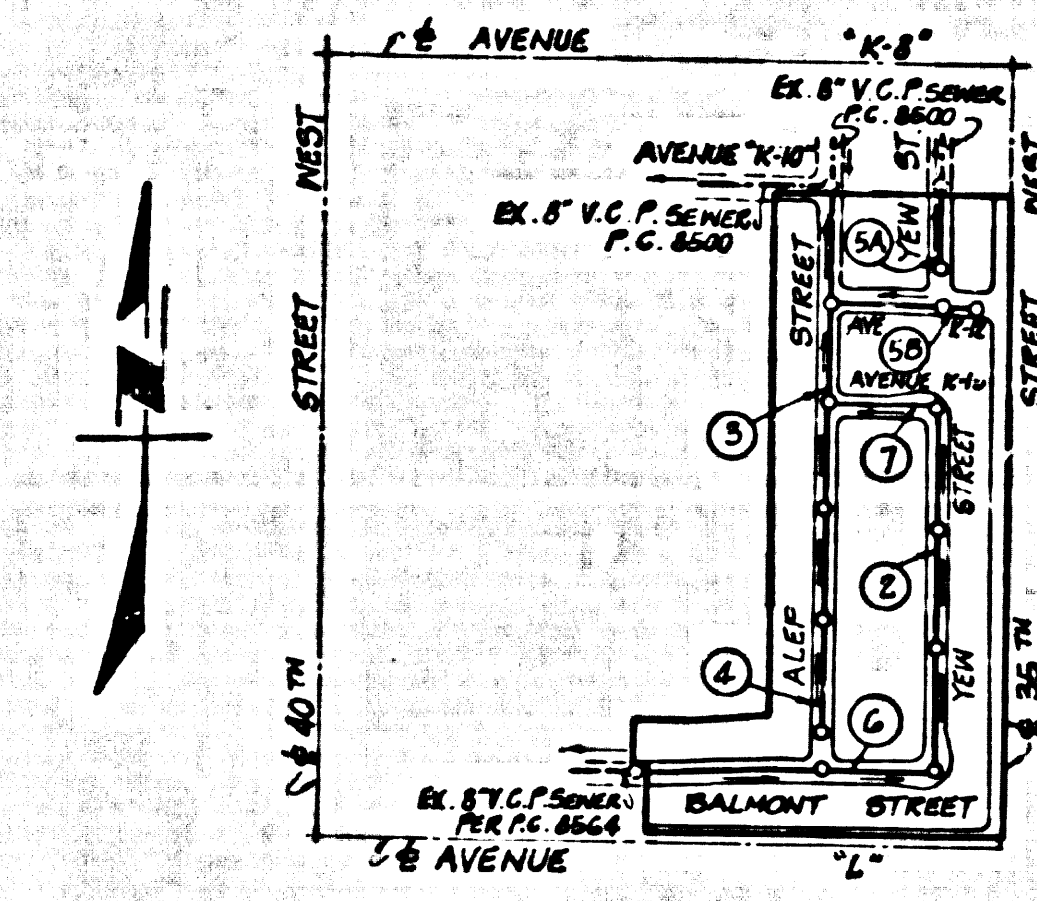


B.M. D.L. No 358 ELEV. 2428.377
 C.S. MON. 9 INCHES DN @ INT. OF
 AVENUE L AND 40TH STREET WEST
 MKD. (T. 7. N., R. 12. W., S. 13. N., SEC. COR. 25,
 50, 34, 31) S. E. EDGE.
 LANCASTER QUAD. 1965.



INDEX MAP
 SCALE 1"=600'
 P.C. 8576
 TRACT No 28785

NOTE:
 APPROVAL OF THIS PLAN BY THE COUNTY OF LOS ANGELES
 DOES NOT CONSTITUTE A REPRESENTATION AS TO THE ACCURACY
 OF THE LOCATION OF OR THE EXISTENCE OR NON-EXISTENCE OF
 ANY UNDERGROUND UTILITY, PIPE, OR STRUCTURE WITHIN
 THE LIMITS OF THIS PROJECT.

LANCASTER BLDG. DIST. NO. 8.0

- NOTE:
- HOUSE LATERALS TO BE CONSTRUCTED WITH INVERTS AT PROPERTY LINE 4 FEET BELOW CURB GRADE EXCEPT AS NOTED.
 - PROVIDE STAKES ON THE PROPERTY LINE OR PROPERTY LINES PRODUCED AT RIGHT ANGLES TO THE SEWER LINE AT THE CENTER LINE OF EACH MANHOLE.
 - NO REPRESENTATIVE OF THE COUNTY ENGINEER WILL SURVEY OR LAY OUT ANY PORTION OF THE WORK.
 - THE PRIVATE ENGINEER SHALL FURNISH THE COUNTY ENGINEER WITH GRADE SHEETS AND STATIONING FOR ALL HOUSE LATERALS AND "T" OR "T" BRANCHES AND SHALL PROVIDE STAKES FOR THEM AT THEIR PROPER LOCATIONS WITH STATIONING CLEARLY MARKED. ALL HOUSE LATERALS SHALL BE CONSTRUCTED IN A STRAIGHT ALIGNMENT AT RIGHT ANGLES TO THE MAIN LINE SEWER EXCEPT AS SHOWN ON THE PLANS. HOUSE LATERALS FROM CHIMNEYS SHALL NOT BE AT AN ANGLE OF LESS THAN 45° WITH THE MAIN LINE SEWER. ANY CHANGE IN ALIGNMENT SHALL BE REQUESTED IN WRITING BY THE PRIVATE ENGINEER.
 - THE PRIVATE ENGINEER SHALL FURNISH THE HOUSE LATERAL DEPTH AT THE PROPERTY LINE BELOW THE TOP OF CURB ELEVATION FOR EACH HOUSE LATERAL ON THE GRADE SHEET.
 - NO REVISIONS SHALL BE MADE IN THESE PLANS WITHOUT THE APPROVAL OF THE COUNTY ENGINEER.
 - THE CONTRACTOR SHALL NOTIFY THE CONSTRUCTION DIVISION BY TELEPHONE, MADISON 4-4947, EXT. 81281, AT LEAST TWENTY-FOUR HOURS BEFORE STARTING ANY WORK UNDER THE CONTRACT.
 - ALL STRUCTURES SHALL BE EITHER BRICK MANHOLES PER S-3 OR PRECAST CONCRETE MANHOLES PER S-3C EXCEPT AS NOTED.
 - "T" OR "T" BRANCHES MAY BE USED FOR CONNECTIONS TO MAINLINE SEWERS EXCEPT AS NOTED.
 - USE EXTRA STRENGTH PIPE, ALL PIPE IS STANDARD DEPTH.
 - VITRIFIED CLAY PIPE JOINTS SHALL BE TYPE "T", "T", OR "T" PER STANDARD SPECIFICATIONS SECTION 288.2.
 - IF A POWER POLE IS WITHIN THREE FEET OF THE SEWER, THE SEWER SHALL BE ENCASED, PER S-32, TWO FEET ON EACH SIDE FROM THE POINT OF INTERFERENCE.
 - IF DURING THE COURSE OF CONSTRUCTION IT IS DETERMINED THAT THERE IS LESS THAN FOUR FEET OF COVER OVER THE TOP OF A MAIN LINE OR HOUSE LATERAL V.C.P. SEWER WHICH IS NOT INDICATED ON THE PLANS, THE PIPE SHALL BE ENCASED PER S-32, UNLESS OTHERWISE APPROVED BY THE COUNTY ENGINEER.
 - RESURFACE ALL TRENCHES WITHIN PAVED AREAS TO MEET L.A. COUNTY ROAD DEPT. OR CALIFORNIA STATE HIGHWAY REQUIREMENTS IN ACCORDANCE WITH PERMITS.
 - SEWERS TO BE TESTED FOR LEAKAGE PER SECTION 284-2.7 OF THE STANDARD SPECIFICATIONS.
 - REFER TO SECTION 7-18.4.1 OF THE STANDARD SPECIFICATIONS, REGARDING SANITARY CHAMBERS.
 - ALL JOINTS BETWEEN CAST IRON PIPE AND VITRIFIED CLAY PIPE SHALL BE MADE WITH A RUBBER SLAVE JOINT, TYPE "C" OR "B", WITH RUBBERING IF NECESSARY PER STANDARD SPECIFICATIONS, SECTION 288.2.

County Sanitation Districts shall be notified prior to the following so that required inspections can be made (Phone 337-1025 • 838-1181)

Acceptance of the project.

No connections for the disposal of industrial wastes shall be made to sewers shown on these drawings without written permission from the Chief Engineer and General Manager of the County Sanitation Districts.

PROFILE, ALIGNMENT AND GRADE OF
 SANITARY SEWERS P.C. 8576
 CONSTRUCTED IN PAGE 1
 TRACT NO. 28785
 PRIVATE CONTRACT NO. 8576

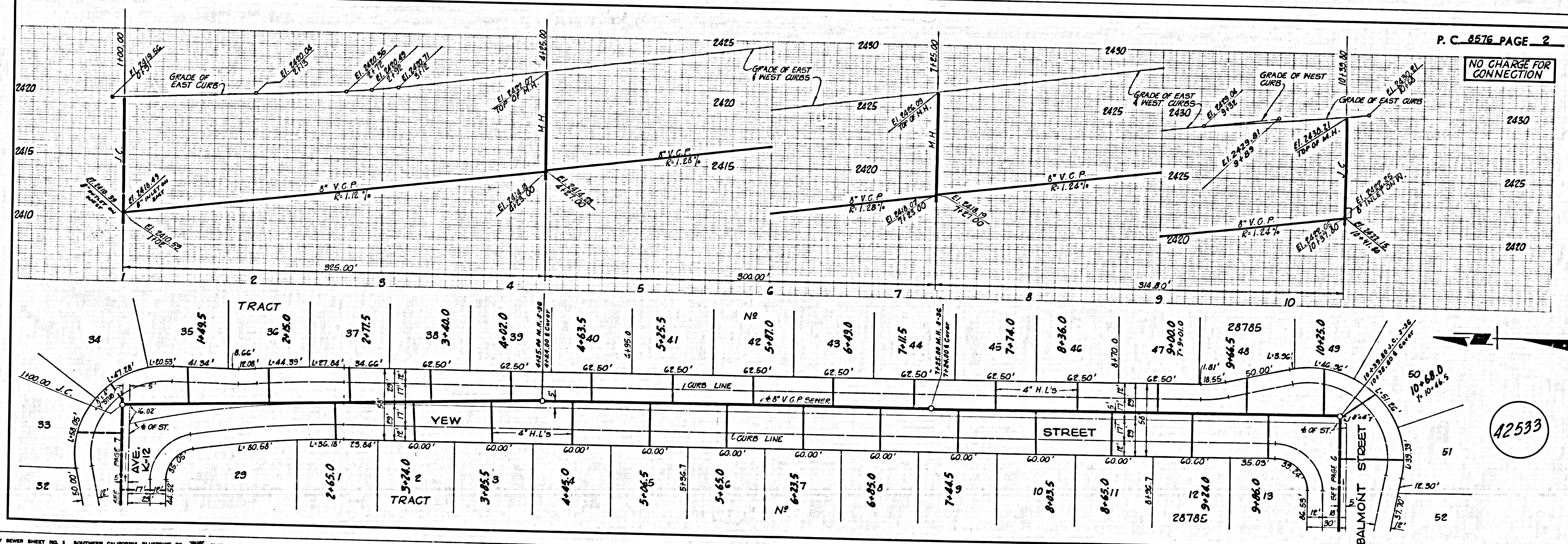
W.S. 71
 4 SHEETS; 7 PAGES
 SCALE: VERT. 1"=4' HORIZ. 1"=40'
 DECEMBER, 1970
 PREPARED IN THE OFFICES OF
 TOUPS ENGINEERING, INC.
 1551 N. COLLEGE AVENUE
 SANTA ANA, CALIFORNIA
 REG. C. E. NO. 14010

NOTE:
 GRADES TO WHICH THE IMPROVEMENT IS TO BE CONSTRUCTED ARE SHOWN ON PLANS AND PROFILE. GRADE POINTS FOR TOP OF CURB, CENTER LINE OF STREET, OR CENTER LINE OF ALLEY ARE SHOWN BY CIRCLES ON PROFILES. AT ALL POINTS BETWEEN INTERMEDIATE POINTS THE GRADE SHALL BE ESTABLISHED SO AS TO CONFORM TO A STRAIGHT LINE BETWEEN SAID INTERMEDIATE POINTS. ELEVATIONS ARE IN FEET ABOVE U.S.C. & G.S. SEA LEVEL DATUM OF 1929. (1970 EDITION) AND GO FURTHER PROVISIONS FOR THE CONSTRUCTION OF SANITARY SEWERS DATED JAN. 7, 1970, AND SHALL BE PROSECUTED BY THE COUNTY ENGINEER.
 BEFORE WORK CAN BE STARTED, THE CONTRACTOR MUST OBTAIN A PERMIT TO EXCAVATE IN COUNTY STREETS FROM THE L.A. COUNTY ROAD DEPT., DISTRICT OFFICE NO. 1, 51111, AND PAY A FEE TO THE COUNTY ENGINEER, ROOM 308, COUNTY ENGINEERING DEPARTMENT, 1551 N. COLLEGE AVENUE, SANTA ANA, CALIFORNIA, 92701.
 APPROVAL OF THIS PLAN BY THE COUNTY OF LOS ANGELES DOES NOT CONSTITUTE A REPRESENTATION AS TO THE ACCURACY OF THE LOCATION OF OR THE EXISTENCE OR NON-EXISTENCE OF ANY UNDERGROUND UTILITY, PIPE, OR STRUCTURE WITHIN THE LIMITS OF THIS PROJECT. THIS NOTE APPLIES TO ALL PAGES.
 IF WORK IS TO BE DONE IN A STATE HIGHWAY, A PERMIT MUST BE OBTAINED FROM THE STATE OF CALIFORNIA, DIVISION OF HIGHWAYS, THE SOUTH SPRING STREET, LOS ANGELES, CALIFORNIA.

COUNTY OF LOS ANGELES, CALIFORNIA
 JOHN A. LAMBIE, COUNTY ENGINEER J. D. PARKHURST, CHIEF ENGINEER
 APPROVED BY *[Signature]* 3/1/71 APPROVED BY *[Signature]*
 REGIONAL ENGINEER STATE OFFICE ENGINEER
 CHECKED BY *[Signature]* 3/1/71
 REG. C.E. NO. 16745

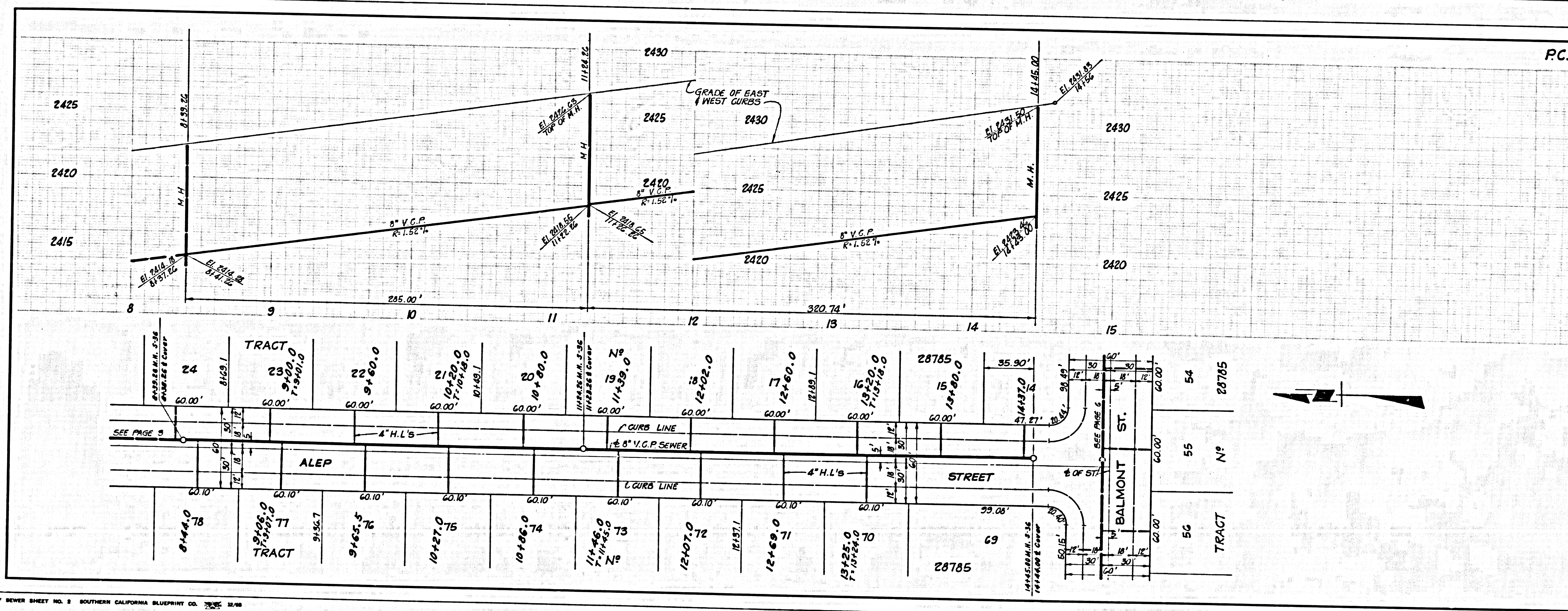
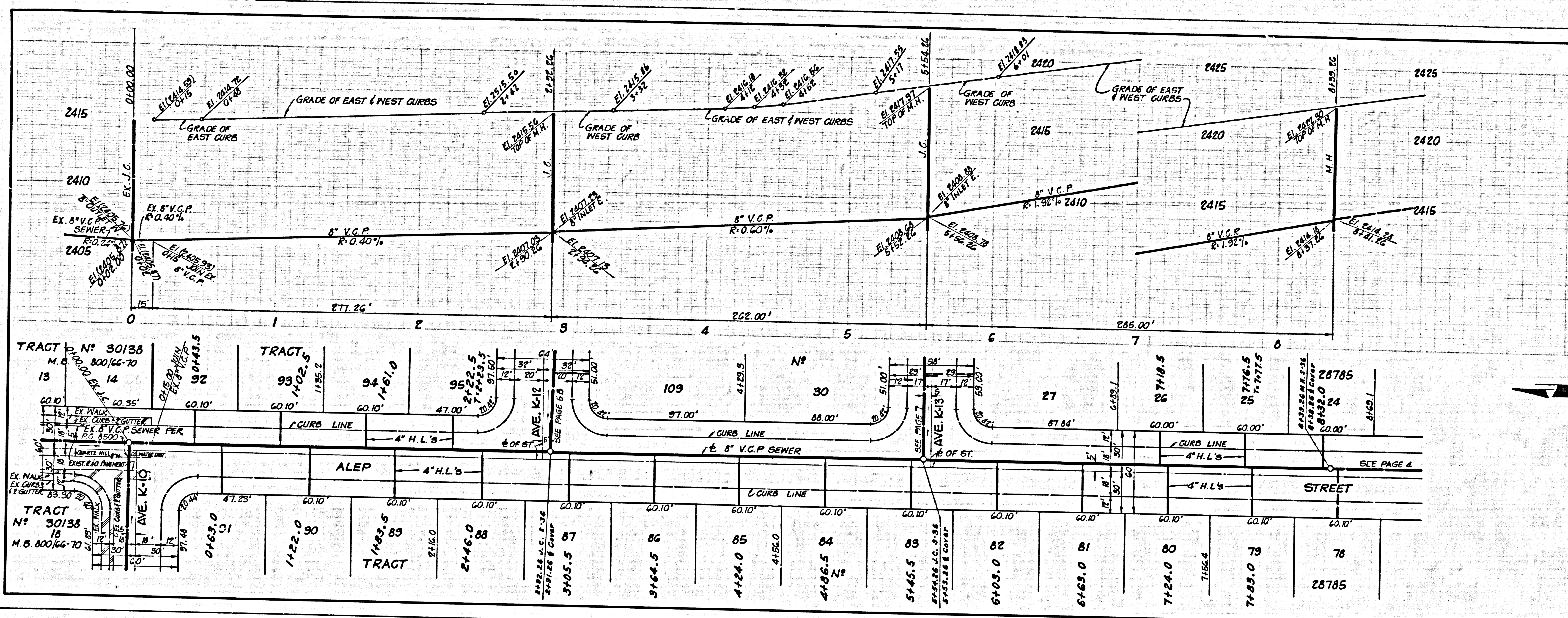
COLLECT CHARGES AS INDICATED

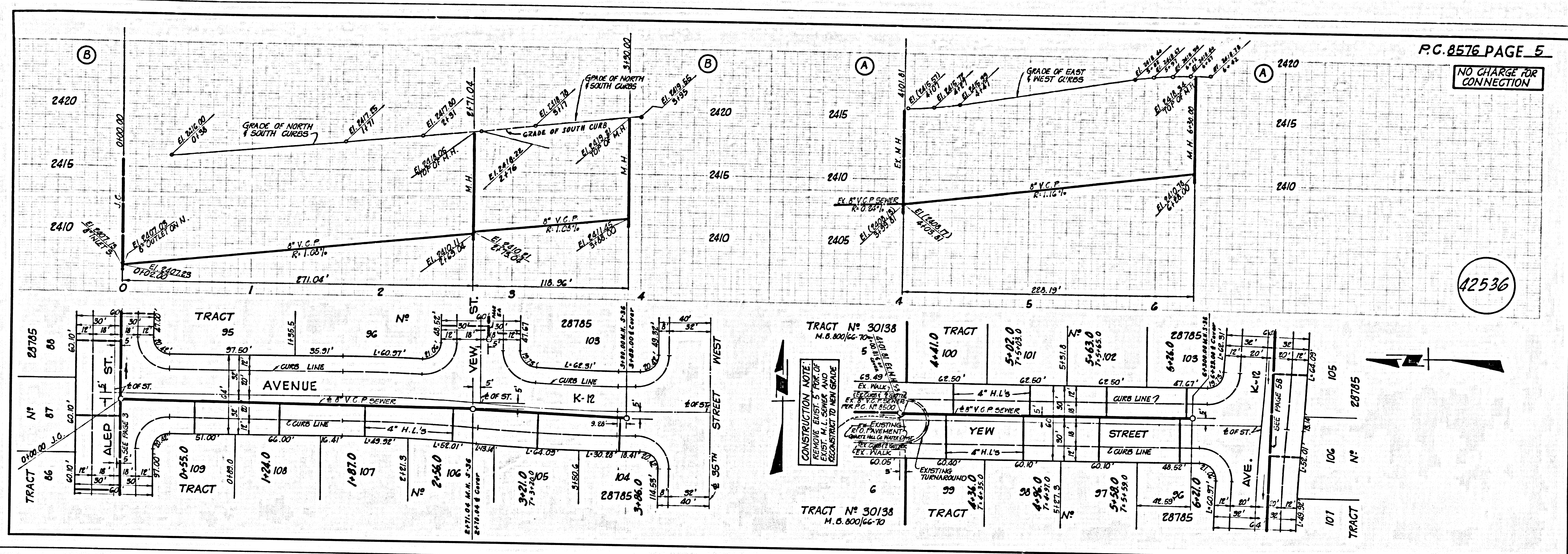
J.N. 0250.02



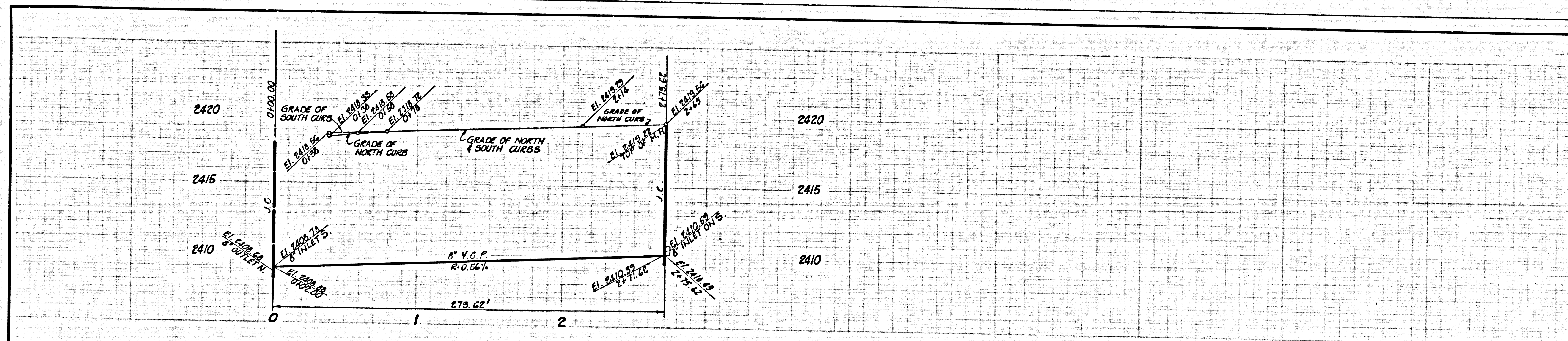
P.C. 8576 PAGE 2
 NO CHARGE FOR CONNECTION

12533





NO CHARGE FOR CONNECTION



42538

