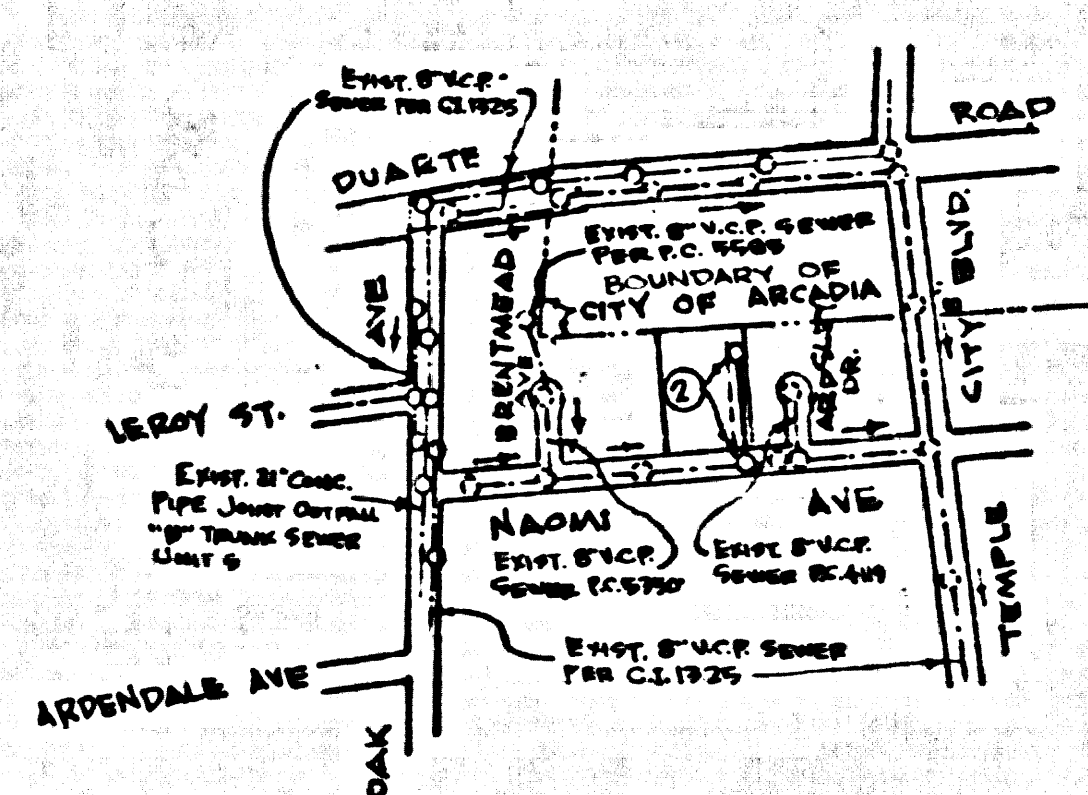


B.M. B.G. 808 ELEV. 495.947
 L+5PK. E. CB. 12 FT. S. BCR. 8
 SE. COR. OAK AVE & NAOMI AVE.
 MKD (T.E. 8572)

ARCADIA QUAD. 19.70



INDEX MAP
 SCALE 1"=600'
 P.C. 8577

Numbers in circles indicate page numbers ②

- GENERAL NOTES:**
- ELEVATIONS ARE IN FEET ABOVE U.S.C. & G.S. SEA LEVEL " datum of 1929.
 - NO REVISIONS SHALL BE MADE IN THESE PLANS WITHOUT THE APPROVAL OF THE COUNTY ENGINEER.
 - NO REPRESENTATIVE OF THE COUNTY ENGINEER WILL SURVEY OR LAY OUT ANY PORTION OF THE WORK.
 - GRADES TO WHICH THIS IMPROVEMENT IS TO BE CONSTRUCTED ARE SHOWN ON PLANS AND PROFILES. GRADE POINTS FOR TOP OF CURB, CENTER LINE OF STREETS, OR CENTER LINE OF ALLEYS ARE SHOWN BY CIRCLES ON PROFILES. AT ALL POINTS BETWEEN DESIGNATED POINTS THE GRADE SHALL BE ESTABLISHED SO AS TO CONFORM TO A STRAIGHT LINE DRAWN BETWEEN SAID DESIGNATED POINTS.
 - THE PRIVATE ENGINEER SHALL FURNISH THE COUNTY ENGINEER WITH GRADE SHEETS AND STATIONING FOR ALL HOUSE LATERALS AND "1" OR "1 1/2" BRANCHES AND SHALL PROVIDE STAGES FOR THEM AT THEIR PROPER LOCATIONS WITH STATIONING PLAINLY MARKED. ALL HOUSE LATERALS SHALL BE CONSTRUCTED IN A STRAIGHT ALIGNMENT AT RIGHT ANGLES FROM THE MAIN LINE SEWER EXCEPT AS SHOWN ON THE PLANS. HOUSE LATERALS FROM CHIMNEYS SHALL NOT HAVE AN ANGLE OF LESS THAN 45° WITH THE MAIN LINE SEWER. ANY CHANGE IN ALIGNMENT SHALL BE REQUESTED IN WRITING BY THE PRIVATE ENGINEER.
 - THE PRIVATE ENGINEER SHALL FURNISH THE HOUSE LATERAL WITHIN THE PROPERTY LINE BELOW THE TOP OF CURB ELEVATION FOR EACH HOUSE LATERAL ON THE GRADE SHEET.
 - BEFORE WORK CAN BE STARTED, THE CONTRACTOR MUST OBTAIN A PERMIT TO EXCAVATE IN CURB STREETS FROM THE L. A. COUNTY ROAD DEPT., DISTRICT OFFICE NO. 2, AND PAY A FEE TO THE COUNTY ENGINEER, ROAD & SUPERVISOR, HIGHWAY DEPT., COUNTY OF LOS ANGELES, OR SAN GABRIEL VALLEY REGIONAL OFFICE, TO COVER THE COST OF CONSTRUCTION INSPECTION AND RECORD PLANS.
 - IF WORK IS TO BE DONE IN A STATE HIGHWAY, A PERMIT MUST BE OBTAINED FROM THE STATE OF CALIFORNIA, DIVISION OF HIGHWAYS, 138 SOUTH SPRING STREET, LOS ANGELES, CALIFORNIA.
 - APPROVAL OF THIS PLAN BY THE COUNTY OF LOS ANGELES DOES NOT CONSTITUTE A REPRESENTATION AS TO THE ACCURACY OF THE LOCATION OF OR THE EXISTENCE OR NON-EXISTENCE OF ANY UNDERGROUND UTILITY PIPE, OR STRUCTURE WITHIN THE LIMITS OF THIS PROJECT. THIS NOTE APPLIES TO ALL PAGES.
 - REFER TO SECTION 7-18.4.1 OF THE STANDARD SPECIFICATIONS, REGARDING SAFETY ORDERS.

County Sanitation Districts shall be notified prior to the following so that required inspection can be made (Phone 337-1055 - 609-1101).

No connections for the disposal of industrial wastes shall be made to sewers shown on these drawings without written permission from the Chief Engineer and General Manager of the County Sanitation Districts.

- CONSTRUCTION NOTES:**
- WORK SHALL BE CONSTRUCTED ACCORDING TO THE STANDARD SPECIFICATIONS FOR PUBLIC WORKS CONSTRUCTION (1970 EDITION) AND COUNTY ENGINEER SPECIAL PROVISIONS FOR THE CONSTRUCTION OF SANITARY SEWERS DATED APRIL 7, 1970 AND SHALL BE PROSECUTED ONLY IN THE PRESENCE OF THE COUNTY ENGINEER.
 - THE CONTRACTOR SHALL NOTIFY THE CONSTRUCTION DIVISION BY TELEPHONE, IN UNISON 9-07, EXT. 8188, AT LEAST TWENTY-FOUR HOURS BEFORE STARTING ANY WORK UNDER THIS CONTRACT.
 - HOUSE LATERALS TO BE CONSTRUCTED WITH INVERTS AT 1" OR 1 1/2" BELOW FINISHED GRADE EXCEPT AS NOTED.
 - WYE OR THE BRANCHES MAY BE USED FOR CONNECTIONS TO MAINLINE SEWERS EXCEPT AS NOTED.
 - ALL STRUCTURES SHALL BE EITHER BRICK MANHOLES PER S-2 OR PRECAST CONCRETE MANHOLES PER S-26, EXCEPT AS NOTED.
 - PROVIDE STAGES ON THE PROPERTY LINE OR PROPERTY LINES PRODUCED AT RIGHT ANGLES TO THE SEWER LINE AT THE CENTER LINE OF EACH MANHOLE.
 - MANHOLE TOPS IN UNIMPROVED RIGHTS OF WAY TO BE SIX INCHES ABOVE FINISHED GRADE.
 - VERTICAL CLAY PIPE JOINTS SHALL BE TYPE "B", "C", OR "D" PER STANDARD SPECIFICATIONS SECTION 200-2.
 - IF A POWER POLE IS WITHIN THREE FEET OF THE SEWER, THE SEWER SHALL BE ENCASED, PER S-23, CASE II, TWO FEET ON EACH SIDE FROM THE POINT OF INTERFERENCE.
 - IF DURING THE COURSE OF CONSTRUCTION IT IS DETERMINED THAT THERE IS LESS THAN FOUR FEET OF COVER OVER THE TOP OF A MAIN LINE OR HOUSE LATERAL V.C.P. SEWER WHICH IS NOT INDICATED ON THE PLANS, THE PIPE SHALL BE ENCASED PER S-23, CASE II UNLESS OTHERWISE APPROVED BY THE COUNTY ENGINEER.
 - ALL JOINTS BETWEEN CAST IRON PIPE AND VITRIFIED CLAY PIPE SHALL BE MADE WITH A RUBBER SLEEVY JOINT, TYPE "C" OR "B", WITH BUSHING IF NECESSARY PER STANDARD SPECIFICATIONS, SECTION 200-2.
 - SEWERS TO BE TESTED FOR LEAKAGE PER SECTION 206-2.7 OF THE STANDARD SPECIFICATIONS AND SPECIAL PROVISIONS.
 - RESURFACE ALL TRENCHES WITHIN PAVED AREAS TO MEET L.A. COUNTY ROAD DEPT. OR CALIFORNIA STATE HIGHWAY REQUIREMENTS IN ACCORDANCE WITH PERMITS.

PROFILE, ALIGNMENT AND GRADE OF
SANITARY SEWERS PAGE 1
 TO BE CONSTRUCTED IN
RIGHT OF WAY NORTH OF NAOMI AVE.

PRIVATE CONTRACT NO. 8577

W.S. 44, C-3
 1 SHEETS, 2 PAGES

SCALE: VERT. 1"=4'
 HORIZ. 1"=40'

PREPARED IN THE OFFICES OF
 DOUGLAS M. ROSS
 1610 S. BALDWIN AVENUE
 PASADENA, CALIFORNIA 91006

BY: Douglas M. Ross
 REG. C. E. No. 17190

THE FOLLOWING LATEST REVERED STANDARD PLANS ON FILE IN THE OFFICE OF THE COUNTY ENGINEER SHALL APPLY IN THE CONSTRUCTION OF THIS PROJECT.

MINIMUM PUBLIC SAFETY REQUIREMENTS	S-2
BRICK MANHOLES	S-2
STANDARD MANHOLE STEP	S-17
REINFORCED CONCRETE PIPE	S-27
CRACKLING AND ENCASEMENT	S-28
WYE OR TEE SUPPORT	S-28
ALLOWABLE TRENCH WIDTHS	S-28
ENCASED MANHOLE FRAME AND COVER	S-28
NON-REINFORCED PRECAST CONCRETE MANHOLES	S-28

42300

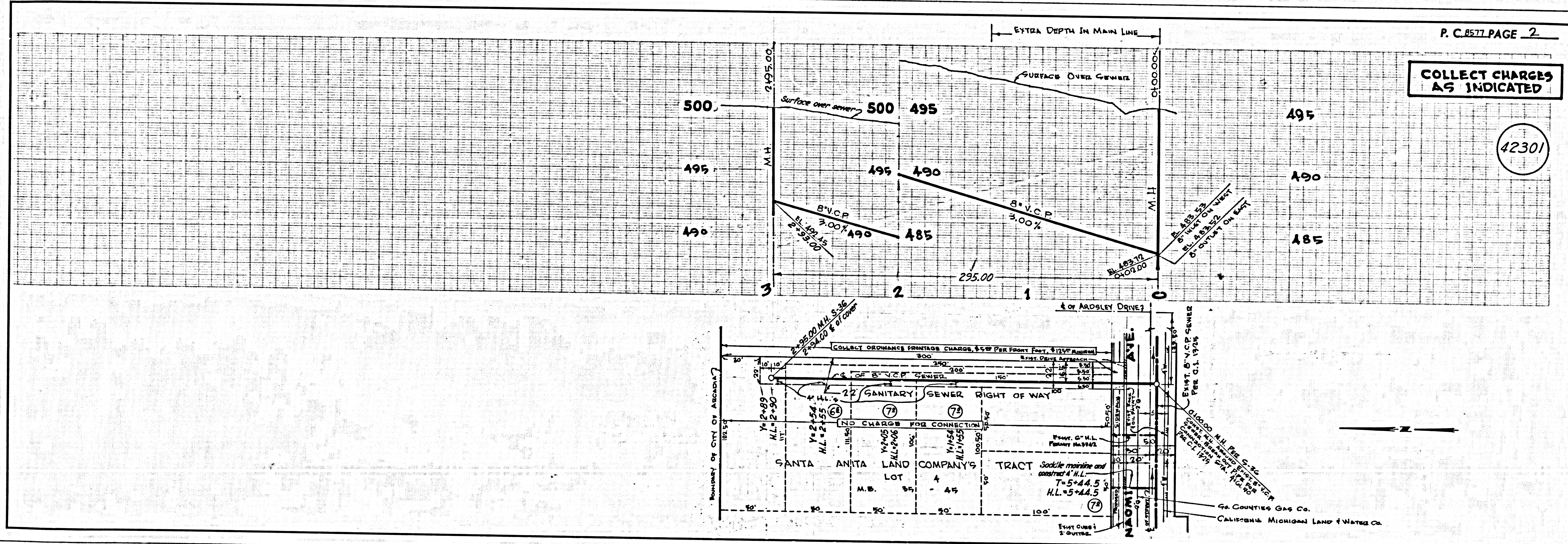
COUNTY OF LOS ANGELES, CALIFORNIA

JOHN A. LAMBIE, COUNTY ENGINEER JOHN D. PARKHURST, CHIEF ENGINEER
 CO. SAN. DIST. NO. 15

APPROVED: John W. Kuegel, REGIONAL ENGINEER, DATED 2-18-71
 APPROVED: J. D. Parkhurst, CHIEF ENGINEER, DATED 2-16-71

CHECKED: John de Jong, DATED 2-16-71
 REG. C. E. NO. 7852

TEMPLE CITY BLDG. DIST. 5 J.N. 0370. 88



COLLECT CHARGES AS INDICATED

42301