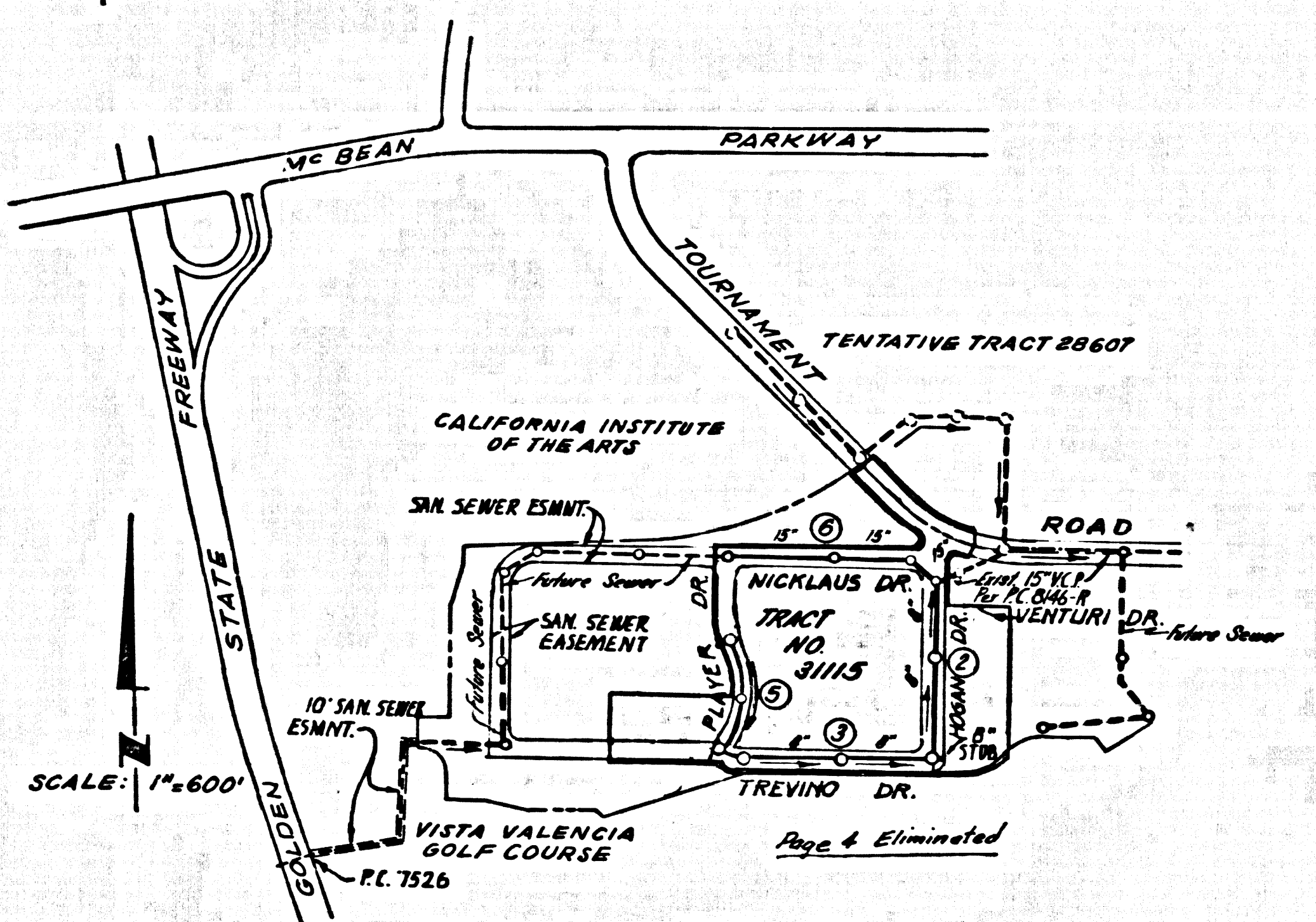


B.M. BL 642 ELEV. 1262.066
 Road Department Bench Mark Top in North side of concrete
 base of sidewalk corner 16' from corner of 31115, 35' S of E
 of 1st Ave and 87' C of E of Wiley Clayton Road.
NEWHALL QUAD, 19 65



INDEX MAP
 SCALE: 1" = 600'
P.C. 8583

NOTE: NUMBERS IN CIRCLES INDICATE PAGE NUMBERS

NEWHALL BLDG. DIST. NO. 8.2

PROFILE ALIGNMENT AND GRADE OF **P.C. 8583**
SANITARY SEWERS PAGE 1

CONSTRUCTED IN
TRACT No 31115

PRIVATE CONTRACT NO. 8583

W.S. 63-D-3
 INDEX 2583A
 3 SHEETS, 12 PAGES

SCALE: VERT. 1" = 4'
 HORIZ. 1" = 40'
JANUARY, 1971

PREPARED IN THE OFFICES OF
VALCON INC.
 1429 THOUSAND OAKS BLVD.
 THOUSAND OAKS, CALIFORNIA

42501

FOR LEGEND SEE PLAN NO. S-1

THE FOLLOWING COUNTY ENGINEER STANDARD PLANS APPLY TO THIS PROJECT

LEGEND	S-1
MIN. PUBLIC SAFETY REQUIREMENTS	S-2
BRICK MANHOLE	S-3
NON REINFORCED PRECAST CONCRETE MANHOLE	S-36
LOCKING MANHOLE FRAME AND COVER	S-35
MANHOLE STEP	S-17
BEDDING FOR SEWER PIPE	S-21
CRADLING AND ENCASEMENT	S-23
WYE OR TEE SUPPORT	S-26
CHIMNEY PIPE AND BASE	S-27
ALLOWABLE TRENCH WIDTHS	S-33

REVISIONS

LOWEST GRADES ON PAGE 3 (4-26-69 14 8-7-69)
 & R. DUE TO WATER MAIN INTERFERENCE, ADD
 CAST-IRON PIPE ON PAGE 3.

APPROVED: **HARVEY T. BRANDT**
 COUNTY ENGINEER
 BY: *[Signature]* DATE: 4-23-71
 OFFICE OF THE COUNTY ENGINEER

REVISION: 1. Sanitary Sewer on Page 4 deleted.
2. Add 6" H.L. for lot 8 on Page 5.

APPROVED: **HARVEY T. BRANDT**
 COUNTY ENGINEER
 BY: *[Signature]* DATE: 5-22-71
 OFFICE OF THE COUNTY ENGINEER

- NOTE:
- PROVIDE STAKES ON THE PROPERTY LINE OR PROPERTY LINES PRODUCED AT RIGHT ANGLES TO THE SEWER LINE AT THE CENTER LINE OF EACH MANHOLE.
 - NO REPRESENTATIVE OF THE COUNTY ENGINEER WILL SURVEY OR LAY OUT ANY PORTION OF THE WORK.
 - THE PRIVATE ENGINEER SHALL FURNISH THE COUNTY ENGINEER WITH GRADE SHEETS AND STATIONING FOR ALL HOUSE LATERALS. ALL HOUSE LATERALS SHALL BE CONSTRUCTED IN A STRAIGHT ALIGNMENT WITH STATIONING PLAINLY MARKED. AS MUCH AS ONE (1) FOOT FROM THE MAIN LINE SEWER EXCEPT AT RIGHT ANGLES FROM THE MAIN LINE SEWER EXCEPT AT RIGHT ANGLES FROM THE MAIN LINE SEWER. ANY CHANGE IN ALIGNMENT SHALL BE REQUESTED BY THE PRIVATE ENGINEER.
 - THE PRIVATE ENGINEER SHALL FURNISH THE HOUSE LATERAL DEPTH AT THE PROPERTY LINE BELOW THE TOP OF CURB ELEVATION FOR EACH HOUSE LATERAL ON THE GRADE SHEET.
 - NO REVISIONS SHALL BE MADE IN THESE PLANS WITHOUT THE APPROVAL OF THE COUNTY ENGINEER.
 - THE CONTRACTOR SHALL NOTIFY THE CONSTRUCTION DIVISION BY TELEPHONE, MADISON 9-4727, EXT. 81551, AT LEAST TWENTY (20) HOURS BEFORE STARTING ANY WORK UNDER THIS CONTRACT.
 - MANHOLES SHALL BE BRICK SEWER STRUCTURES PER S-3 OR PRECAST CONCRETE MANHOLES PER S-36, EXCEPT AS NOTED.
 - "T" BRANCHES SHALL BE 8" OR 6" FOR CONNECTIONS.
 - MANHOLE TOPS IN UNIMPROVED RIGHTS-OF-WAY TO BE 18" ABOVE FINISHED GRADE.
 - USE EXTRA STRENGTH PIPE, ALL PIPE IS STANDARD DEPTH EXCEPT AS NOTED.
 - IDENTIFY CLAY PIPE JOINTS SHALL BE TYPE "D", 12" OR "18" PER STANDARD SPECIFICATIONS SECTION 408-2.
 - IF A POWER POLE IS WITHIN THREE FEET OF THE SEWER, THE SEWER SHALL BE ENCASED, PER S-23, TWO FEET ON EACH SIDE FROM THE POINT OF INTERFERENCE.
 - IF DURING THE COURSE OF CONSTRUCTION IT IS DETERMINED THAT THERE IS LESS THAN FOUR FEET OF COVER OVER THE TOP OF A MAIN LINE OR HOUSE LATERAL V.C.S. SEWER WHICH IS NOT INDICATED ON THE PLANS, THE PIPE SHALL BE ENCASED PER S-23, UNLESS OTHERWISE APPROVED BY THE COUNTY ENGINEER.
 - HOUSE LATERALS TO BE CONSTRUCTED WITH INVERTS AT PROPERTY LINE & FEET BELOW CURB GRADE EXCEPT AS NOTED.
 - REPLACE ALL TRENCHES WITHIN PAVED AREAS TO MEET L.A. COUNTY ROAD DEPT. OR CALIFORNIA STATE HIGHWAY REQUIREMENTS IN ACCORDANCE WITH PERMITS.
 - RECORDS TO BE TESTED FOR LEAKAGE PER SECTION 408-2.3.7 OF THE STANDARD SPECIFICATIONS.
 - REFER TO SECTION 7-10.4.1 OF THE STANDARD SPECIFICATIONS, REGARDING SAFETY CONDICTIONS.
 - ALL JOINTS BETWEEN CAST IRON PIPE AND REINFORCED CLAY PIPE SHALL BE MADE WITH A RUBBER SLIDE JOINT, TYPE "C" OR "D", WITH JOINTS AS NECESSARY PER STANDARD SPECIFICATIONS, SECTION 408-2.
 - SPECIAL BACKFILL IN DESIGNATED AREAS:
 - BACKFILL TRENCHES AND REPLACE OTHER EARTH SO AS TO ACHIEVE THE NATURAL OR FINISHED GRADE AND SURFACE DRAINAGE OF THE BUILDING PLANS APPROVED FOR THIS DEVELOPMENT BY THE BUILDING & SAFETY DIVISION.
 - ALL BACKFILL AND EARTH REPLACES SHALL BE COMPACTED TO A MINIMUM OF 80% OF MAXIMUM DENSITY PER THE STANDARD METHOD OF TEST 808-87 F AS MODIFIED, ACCEPTABLE CERTIFICATION OF SUCH COMPACTION SHALL BE SUBMITTED TO THE CONSTRUCTION DIVISION.

NOTICE TO CONTRACTOR

The existence and location of any underground utility pipes or structures shown on these plans are obtained by a search of the available records to the best of my knowledge there are no existing utilities except as shown on these plans. The contractor is required to take due precautionary measures to protect the utility lines shown and any other lines not of record or not shown on these plans.

[Signature]
 J. D. PARKHURST
 COUNTY ENGINEER

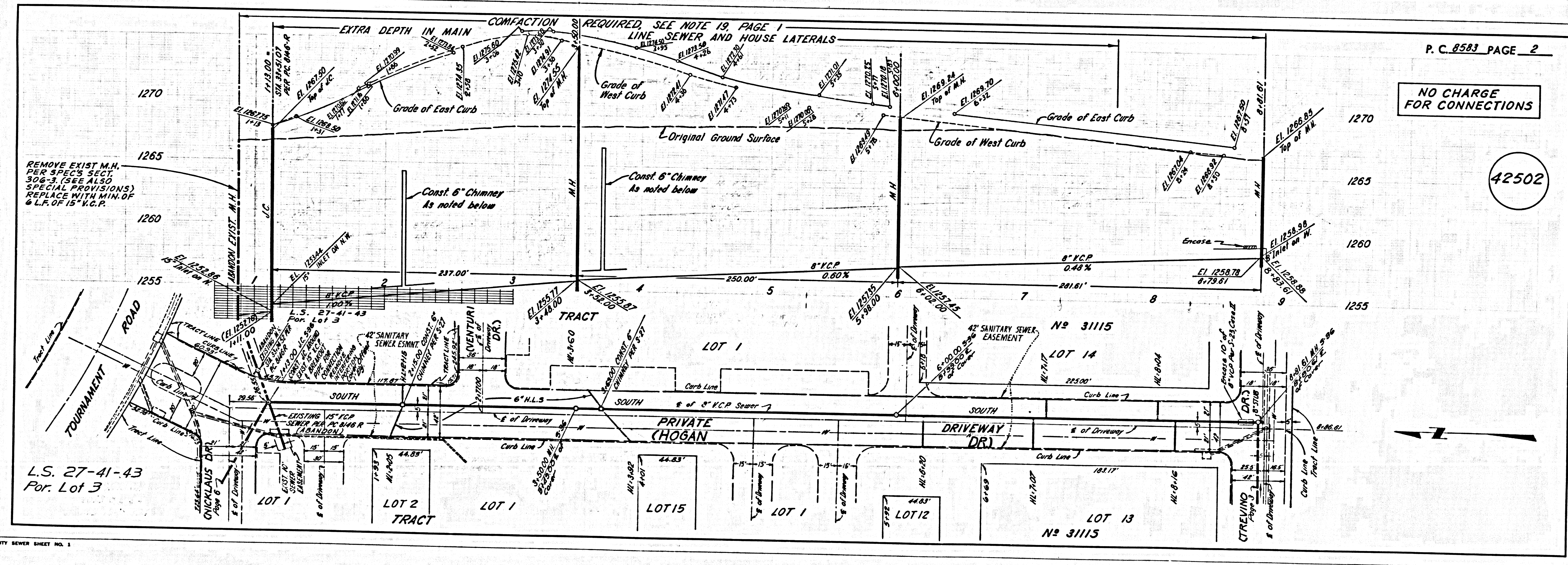
COLLECT CHARGES AS INDICATED

COUNTY OF LOS ANGELES, CALIFORNIA
HARVEY T. BRANDT, COUNTY ENGINEER
 J. D. PARKHURST, CHIEF ENGINEER

APPROVED BY: *[Signature]* REGIONAL ENGINEER
 APPROVED BY: *[Signature]* OFFICE ENGINEER

CHECKED BY: *[Signature]* 4-5-71
 REG. C.E. NO. 46390

J.N. 0250.02



NO CHARGE FOR CONNECTIONS

42502

