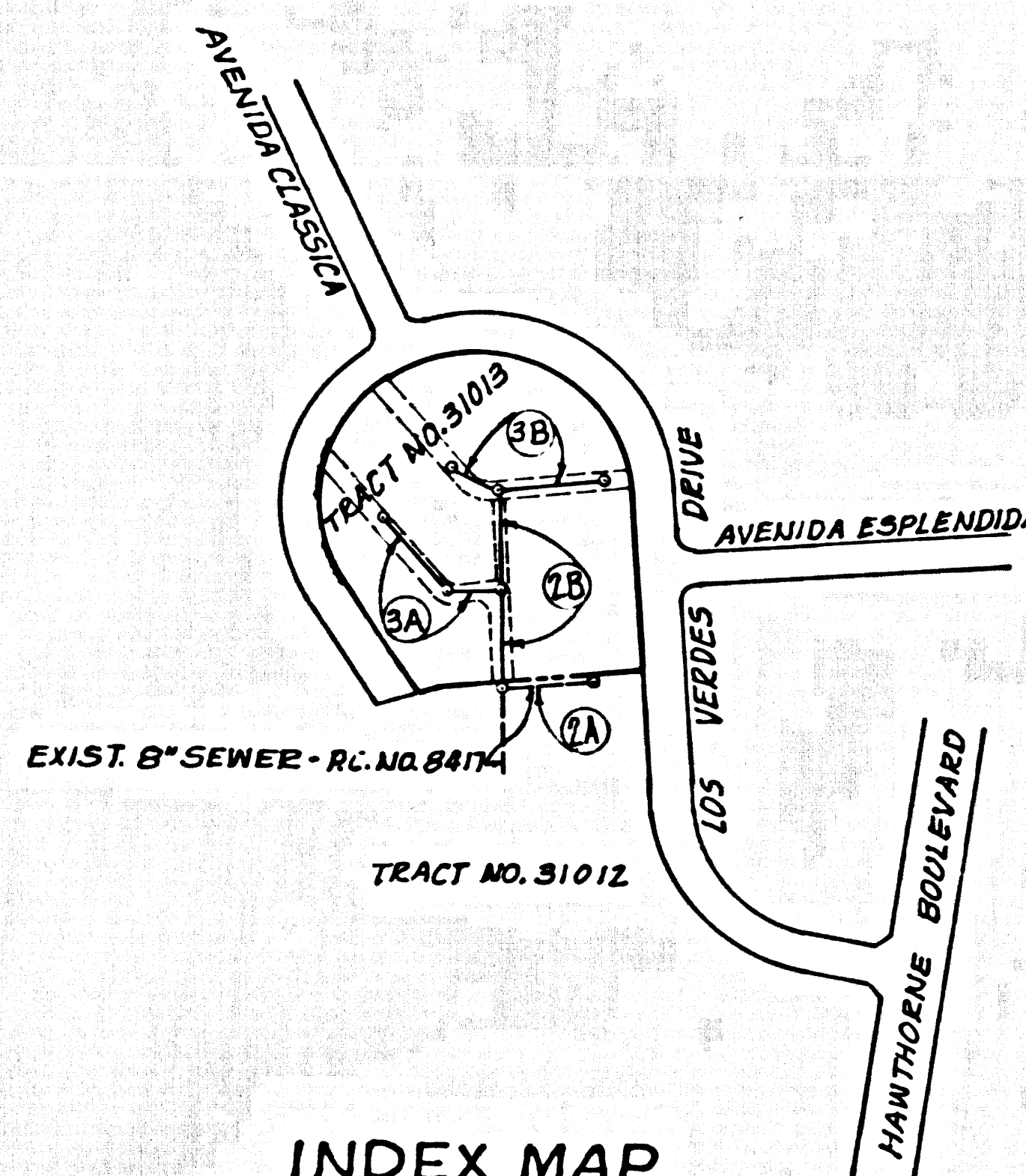


B.M. BY 6036 ELEV. 848.663
 1/4 Bn. East Corb 1/2 South of B.R.C. At S/E
 Cor. Hawthorne Blvd. & El Verdes Dr. 55'±
 N. & 40'± E. of E. Intersection.
 PALOS VERDES QUAD. 19 & S.



INDEX MAP
 SCALE: 1"=300'
 TRACT NO. 31013
 NUMBERS IN CIRCLES INDICATE PAGE NUMBERS

REV. NO.	DESCRIPTION	DATE	APPROVED	DATE
1	CONST. W/RE ONLY FOR LOT 9 LINE 5-A CHANGED U.C. LOC. LOT 15 FROM LINE 5-B TO LINE 2-A (CASE II). CHANGE I.C. LOC. LOT 6 FROM LINE 2-B TO LINE 5-A	4/17/71	<i>[Signature]</i>	4/17/71

COLLECT CHARGES AS INDICATED

LOMITA BLDG. DIST. NO. 12

- NOTES:
- HOUSE LATERALS TO BE CONSTRUCTED WITH INVERTS AT PROPERTY LINE 4 FEET BELOW CURB GRADE EXCEPT AS NOTED.
 - PROVIDE STAGES ON THE PROPERTY LINE OR PROPERTY LINES PRODUCED AT RIGHT ANGLES TO THE SEWER LINE AT THE CENTER LINE OF EACH MANHOLE.
 - NO REPRESENTATIVE OF THE COUNTY ENGINEER WILL SURVEY OR LAY OUT ANY PORTION OF THE WORK.
 - THE PRIVATE ENGINEER SHALL FURNISH THE COUNTY ENGINEER WITH GRADE SHEETS AND STATIONING FOR ALL HOUSE LATERALS AND "T" OR "Y" BRANCHES AND SHALL PROVIDE STAGES FOR THEM AT THEIR PROPER LOCATIONS WITH STATIONING PLAINLY MARKED. ALL HOUSE LATERALS SHALL BE CONSTRUCTED IN A STRAIGHT ALIGNMENT AT RIGHT ANGLES FROM THE MAIN LINE SEWER EXCEPT AS SHOWN ON THE PLANS. HOUSE LATERALS FROM CHIMNEYS SHALL NOT HAVE AN ANGLE OF LESS THAN 45° WITH THE MAIN LINE SEWER. ANY CHANGE IN ALIGNMENT SHALL BE REQUESTED IN WRITING BY THE PRIVATE ENGINEER.
 - THE PRIVATE ENGINEER SHALL FURNISH THE HOUSE LATERAL DEPTH AT THE PROPERTY LINE BELOW THE TOP OF CURB ELEVATION FOR EACH HOUSE LATERAL ON THE GRADE SHEET.
 - NO REVISIONS SHALL BE MADE IN THESE PLANS WITHOUT THE APPROVAL OF THE COUNTY ENGINEER.
 - THE CONTRACTOR SHALL NOTIFY THE CONSTRUCTION DIVISION BY TELEPHONE, MADISON 9-4747, EXT. 8158, AT LEAST TWENTY-FOUR HOURS BEFORE STARTING ANY WORK UNDER THIS CONTRACT.
 - ALL STRUCTURES SHALL BE EITHER BRICK MANHOLES PER S-3 OR PRECAST CONCRETE MANHOLES PER S-3B EXCEPT AS NOTED.
 - "T" OR "Y" BRANCHES MAY BE USED FOR CONNECTIONS TO MAINLINE SEWERS EXCEPT AS NOTED.
 - MANHOLE TOPS IN UNIMPROVED AREAS TO BE 3/4 INCHES ABOVE FINISHED GRADE.
 - USE EXTRA STRENGTH PIPE. ALL PIPE IS STANDARD DEPTH EXCEPT AS NOTED.
 - VERTICAL CLAY PIPE JOINTS SHALL BE TYPE "B", "C", OR "D" PER STANDARD SPECIFICATIONS SECTION 306-2.
 - IF A POWER POLE IS WITHIN THREE FEET OF THE SEWER, THE SEWER SHALL BE ENCASED, PER S-28, TWO FEET ON EACH SIDE FROM THE POINT OF INTERFERENCE.
 - IF DURING THE COURSE OF CONSTRUCTION IT IS DETERMINED THAT THERE IS LESS THAN FOUR FEET OF COVER OVER THE TOP OF A MAIN LINE OR HOUSE LATERAL V.C.P. SEWER WHICH IS NOT INDICATED ON THE PLANS, THE PIPE SHALL BE ENCASED BY A UNISEL OTHERWISE APPROVED BY THE COUNTY ENGINEER.
 - RESURFACE ALL TRENCHES WITHIN PAVED AREAS TO MEET L.A. COUNTY ROAD DEPT. OR CALIFORNIA STATE HIGHWAY REQUIREMENTS IN ACCORDANCE WITH PERMITS.
 - SEWERS TO BE TESTED FOR LEAKAGE PER SECTION 306-2.3.7 OF THE STANDARD SPECIFICATIONS.
 - REFER TO SECTION 316-1.1 OF THE STANDARD SPECIFICATIONS, REGARDING SAFETY ORDERS.
 - ALL JOINTS BETWEEN CAST IRON PIPE AND VERTICAL CLAY PIPE SHALL BE MADE WITH A RUBBER SLEEVE JOINT, TYPE "C" OR "D", FORTH HEREINAFTER AS NECESSARY PER STANDARD SPECIFICATIONS, SECTION 306-2.

PROFILE, ALIGNMENT AND GRADE OF
 SANITARY SEWERS P.C. 8585
 TO BE CONSTRUCTED IN PAGE 1

TRACT NO. 31013
 PRIVATE CONTRACT NO. 8585

W.S. 27
 2 SHEETS; 3 PAGES
 SCALE: VERT. 1"=8'
 HORIZ. 1"=40' FEB. 1971
 PREPARED IN THE OFFICES OF
 PSOMAS & ASSOCIATES
 By: *[Signature]*
 REG. C. E. NO. 17643

APPROVAL OF THIS PLAN BY THE COUNTY OF LOS ANGELES DOES NOT CONSTITUTE A REPRESENTATION AS TO THE ACCURACY OF THE LOCATION OF OR THE EXISTENCE OR NON-EXISTENCE OF ANY UNDERGROUND UTILITY PIPE, OR STRUCTURE WITHIN THE LIMITS OF THIS PROJECT. THIS NOTE APPLIES TO ALL PAGES.

APPROVED BY: *[Signature]* COUNTY ENGINEER
 HARVEY T. BRANDT COUNTY ENGINEER J. D. PARKHURST, CHIEF ENGINEER
 APPROVED BY: *[Signature]* REGIONAL ENGINEER APPROVED BY: *[Signature]* OFFICE ENGINEER
 CHECKED BY: *[Signature]* 4/17/71
 REG. C.E. NO. 10653

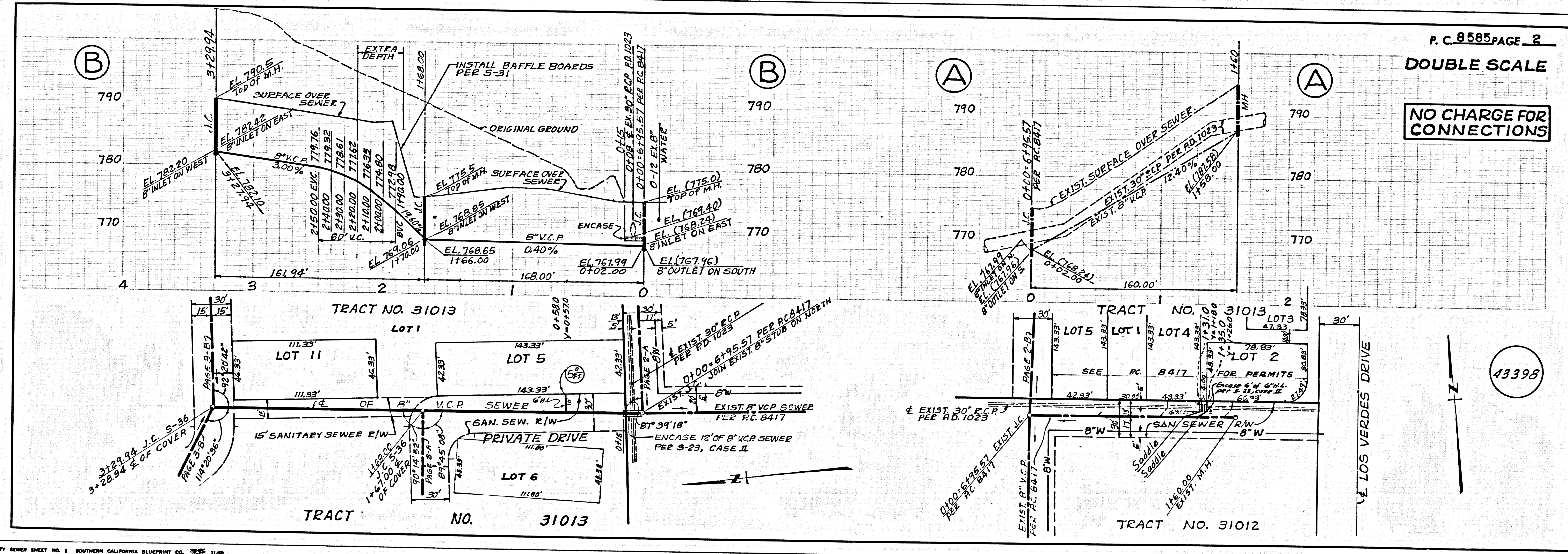
LEGEND

MINIMUM PUBLIC SAFETY REQUIREMENTS	5-1
BRICK MANHOLE	5-2
NON-REINFORCED PRECAST CONCRETE MANHOLE	5-3
RECTANGULAR BRICK MANHOLE	5-4
MANHOLE FRAME AND COVER	5-5
STANDARD MANHOLE STEP	5-7
SEWING FOR SEWER PIPE	5-7
CHANGING AND ENCASEMENT	5-8
WYE OR TEE SUPPORT	5-9
ALLOWABLE TRENCH WIDTHS	5-10
RECTANGULAR PRECAST SMALLER MANHOLES	5-11
RECTANGULAR MANHOLE FRAME AND COVER	5-12

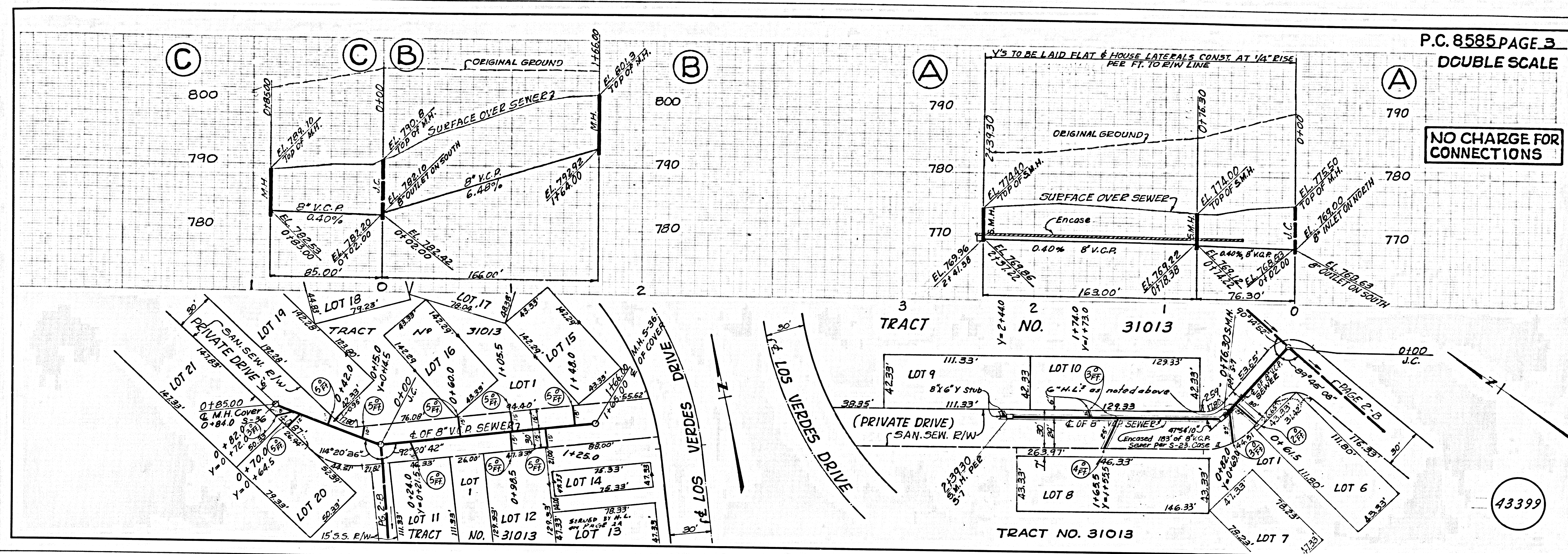
County Sanitation Districts shall be notified prior to the following so that required inspection can be made (Phone 337-1025 - 638-1161)

Acceptance of the project.

No connections for the disposal of industrial wastes shall be made to sewers without the express written permission from the Chief Engineer and General Manager of the County Sanitation Districts.



P. C. 8585 PAGE 2
 DOUBLE SCALE
 NO CHARGE FOR CONNECTIONS



P.C. 8585 PAGE 3
 DOUBLE SCALE

NO CHARGE FOR CONNECTIONS

43399

PAGE