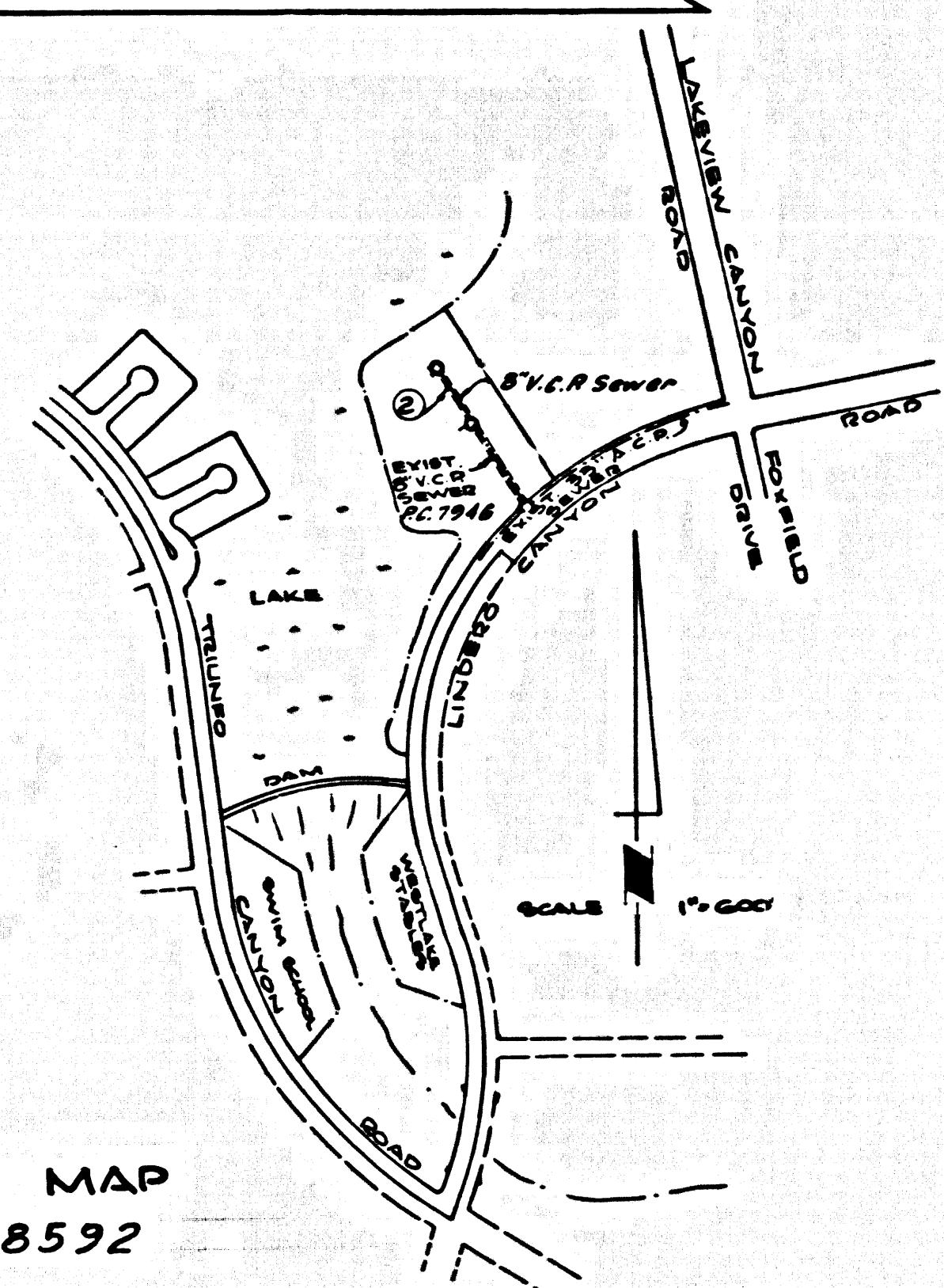


B.M. BY 2556 ELEV. 288.448  
 R.O.B.M. TAG CTR. CS. NR. BCR LEFT TURN  
 POCKET TO GOLF COURSE 4 FT. N. +  
 80 FT. W. CL. INT. AGUARA RD. + LINDERO  
 MALIBU QUAD. 1965 CYN RD



INDEX MAP  
 P.C. No. 8592

(DOUBLE SCALE)  
 CALABASAS BLDG. DIST. NO. 9.1

PROFILE, ALIGNMENT AND GRADE OF  
 SANITARY SEWERS P.C. 8592  
 TO BE CONSTRUCTED IN PAGE 1  
 WESTLAKE MARINA  
 PRIVATE CONTRACT NO. 8592

W.S. 93  
 1 SHEETS; 2 PAGES  
 SCALE: VERT. 1" = 4' FEB. 1971 42727  
 PREPARED IN THE OFFICES OF  
 MCINTIRE & QUIROS, INC.  
 32123 W. LINDERO CANYON RD., WESTLAKE VILLAGE, CALIF.  
 REG. C. E. NO. 15816

- NOTES:
- HOUSE LATERALS TO BE CONSTRUCTED WITH INVERTS AT PROPERTY LINE 4 FEET BELOW CURB GRADE EXCEPT AS NOTED.
  - POURING STAIRS ON THE PROPERTY LINE OR PROPERTY LINES PROTECTORS AT RIGHT ANGLES TO THE SEWER LINE AT THE CENTER LINE OF EACH MANHOLE.
  - NO REPRESENTATIVE OF THE COUNTY ENGINEER WILL SURVEY OR LAY OUT ANY PORTION OF THE WORK.
  - THE PRIVATE ENGINEER SHALL FURNISH THE COUNTY ENGINEER WITH GRAB SAMPLES AND STATIONING FOR ALL HOUSE LATERALS AND "T" OR "T" BRANCHES AND SHALL PROVIDE STAKES FOR THEM AT THEIR PROPER LOCATIONS WITH STATIONING PLAINLY MARKED. ALL HOUSE LATERALS SHALL BE CONSTRUCTED IN A STRAIGHT ALIGNMENT AT RIGHT ANGLES FROM THE MAIN LINE SEWER EXCEPT AS SHOWN ON THE PLANS. HOUSE LATERALS FROM CURBSIDES SHALL NOT HAVE AN ANGLE OF LESS THAN 45° WITH THE MAIN LINE SEWER. ANY CHANGE IN ALIGNMENT SHALL BE REQUESTED IN WRITING BY THE PRIVATE ENGINEER.
  - THE PRIVATE ENGINEER SHALL FURNISH THE HOUSE LATERAL DEPTH AT THE PROPERTY LINE BELOW THE TOP OF CURB ELEVATION FOR EACH HOUSE LATERAL ON THE GRADE SHEET.
  - NO REVISIONS SHALL BE MADE IN THESE PLANS WITHOUT THE APPROVAL OF THE COUNTY ENGINEER.
  - THE CONTRACTOR SHALL NOTIFY THE CONSTRUCTION DIVISION BY TELEPHONE, MADISON 2-4747, EXT. 8748, AT LEAST TWENTY-FOUR HOURS BEFORE STARTING ANY WORK UNDER THIS CONTRACT.
  - ALL STRUCTURES SHALL BE STEEL BRICK MANHOLES PER 5.3 OF PRECAST CONCRETE MANHOLES PER 5-100, EXCEPT AS NOTED.
  - "T" OR "T" BRANCHES MAY BE USED FOR CONNECTIONS TO MAINLINE SEWERS EXCEPT AS NOTED.
  - MANHOLE TOPS IN UNIMPROVED AREAS OF WAY TO BE 12 INCHES ABOVE FINISHED GRADE.
  - USE EXTRA STRENGTH PIPE, ALL PIPE IS STANDARD DEPTH EXCEPT AS NOTED.
  - VITRIFIED CLAY PIPE JOINTS SHALL BE TYPE "S", "T", OR "U" PER STANDARD SPECIFICATIONS SECTION 900.2.
  - IF A POWER POLE IS WITHIN THREE FEET OF THE SEWER, THE SEWER SHALL BE ENCASED, PER 5-25, TWO FEET ON EACH SIDE FROM THE POINT OF INTERFERENCE.
  - IF DURING THE COURSE OF CONSTRUCTION IT IS DETERMINED THAT THERE IS LESS THAN FOUR FEET OF COVER OVER THE TOP OF A MAIN LINE OR HOUSE LATERAL 4" C.P. SEWER WHICH IS NOT INDICATED ON THE PLANS, THE PIPE SHALL BE ENCASED PER 5-25, UNLESS OTHERWISE APPROVED BY THE COUNTY ENGINEER.
  - RESURFACE ALL TRENCHES WITHIN PAVED AREAS TO MEET L.A. COUNTY ROAD DEPT. OR CALIFORNIA STATE HIGHWAY REQUIREMENTS IN ACCORDANCE WITH PERMITS.
  - SEWERS TO BE CONSTRUCTED FOR LEAKAGE PER SECTION 900.2.2 OF THE SPECIAL PROVISIONS.
  - REFER TO SECTION 7-104.1 OF THE STANDARD SPECIFICATIONS, REGARDING SAFETY OBSTACLES.
  - ALL JOINTS BETWEEN CAST IRON PIPE AND VITRIFIED CLAY PIPE SHALL BE MADE WITH A RUBBER SLAVE JOINT, TYPE "C" OR "F", WITH RISING IF NECESSARY PER STANDARD SPECIFICATIONS, SECTION 900.2.

THE FOLLOWING LATEST SEWER STANDARD PLANS ON FILE IN THE OFFICE OF THE COUNTY ENGINEER SHALL APPLY IN THE CONSTRUCTION OF THIS PROJECT:

LEGEND	5.1
MINIMUM PUBLIC SANITARY REQUIREMENTS	5.2
BRICK MANHOLE	5.3
PRECAST CONCRETE MANHOLE	5.4
MANHOLE FRAME AND COVER	5.5
STANDARD MANHOLE STEP	5.7
REINFORCING FOR SEWER PIPE	5.8
CASTING AND ENCASEMENT	5.9
PIPE OF THE SUPPORT	5.10
ALLOWABLE TRENCH WIDTHS	5.11

GRADES TO WHICH THIS IMPROVEMENT IS TO BE CONSTRUCTED ARE SHOWN ON PLANS AND PROFILE GRADE POINTS FOR TOP OF CURBS, CENTER LINE OF STREETS, OR CENTER LINE OF ALLEYS ARE SHOWN BY CIRCLES ON PROFILES. AT ALL POINTS BETWEEN BEING-MADE POINTS THE GRADE SHALL BE ESTABLISHED SO AS TO CONFORM TO A STRAIGHT LINE BEARING BETWEEN SAID BEING-MADE POINTS. ELEVATIONS ARE IN FEET ABOVE U.S.C. & G.S. SEA LEVEL DATUM OF 1929.

WORK SHALL BE CONSTRUCTED ACCORDING TO THE STANDARD SPECIFICATIONS FOR PUBLIC WORKS CONSTRUCTION AND SPECIAL PROVISIONS FOR THE CONSTRUCTION OF SANITARY SEWERS DATED APRIL 7, 1970, AND SHALL BE PROSECUTED ONLY IN THE PRESENCE OF THE COUNTY ENGINEER.

BEFORE WORK CAN BE STARTED, THE CONTRACTOR MUST OBTAIN A PERMIT TO EXCAVATE IN COUNTY STREETS FROM THE L.A. COUNTY ROAD DEPT., DISTRICT OFFICE NO. 1111, AND PAY A FEE TO THE COUNTY ENGINEER, ROOM 308, COUNTY ENGINEERING BUILDING, 126 WEST BROADWAY STREET, LOS ANGELES, CALIFORNIA. REGIONAL OFFICE, NEARBY TO COVER THE COST OF CONSTRUCTION INSPECTION AND RECORD PLANS.

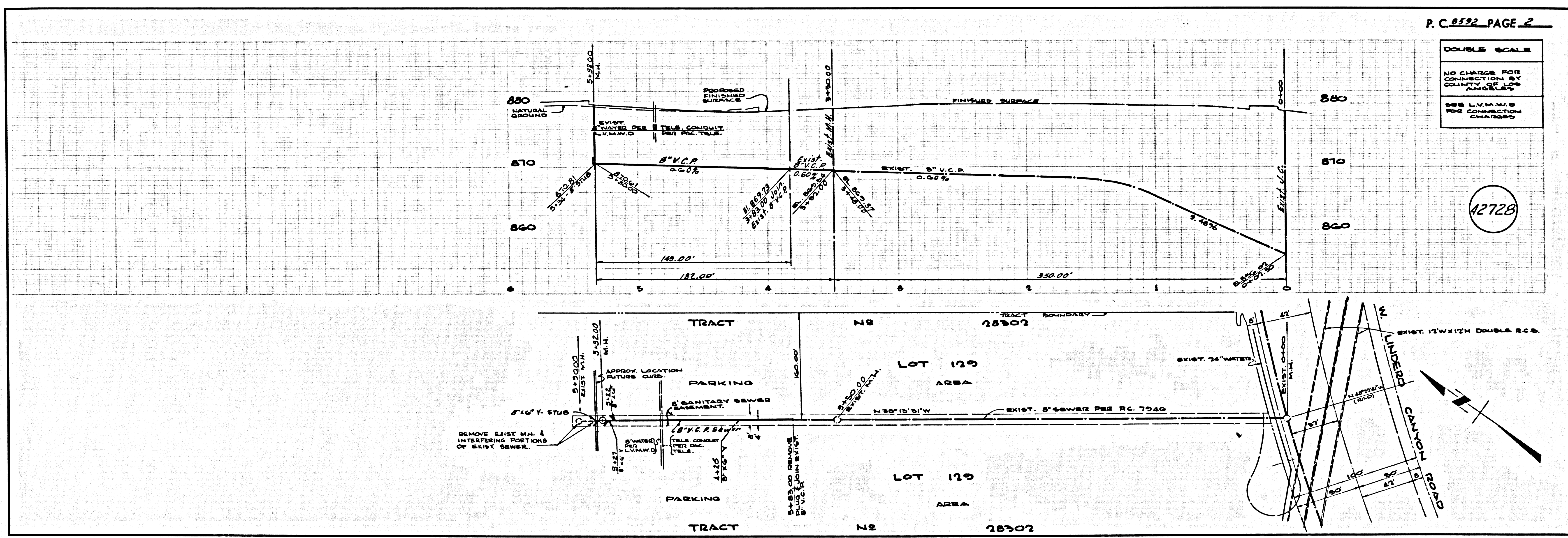
APPROVAL OF THIS PLAN BY THE COUNTY OF LOS ANGELES DOES NOT CONSTITUTE A REPRESENTATION AS TO THE ACCURACY OF THE LOCATION OF OR THE EXISTENCE OR NON-EXISTENCE OF ANY UNDERGROUND UTILITY PIPE, OR STRUCTURE WITHIN THE LIMITS OF THIS PROJECT. THIS NOTE APPLIES TO ALL ALLEYS.

IF WORK IS TO BE DONE IN A STATE HIGHWAY, A PERMIT MUST BE OBTAINED FROM THE STATE OF CALIFORNIA, DIVISION OF HIGHWAYS, 126 SOUTH SPRING STREET, LOS ANGELES, CALIFORNIA.

COUNTY OF LOS ANGELES, CALIFORNIA  
 JOHN A. LAMBIE, COUNTY ENGINEER LAS VIRGENES MUNICIPAL WATER DIST.  
 APPROVED BY: *James H. Miller* DATE: *1/21/71* APPROVED BY: *John Stokes* DATE: *1/21/71*  
 REGIONAL ENGINEER GENERAL MGR., CHIEF ENGINEER  
 CHECKED BY: *Paul J. ...* DATE: *1/21/71*  
 REG. C.E. NO. 17723  
 J.N. 0370.94

COLLECT CHARGES  
 AS INDICATED

REVISION  
 PAGE 2 - ADDED M.H. AT STA. 5+32. ADD  
 - ADDED LATERALS AT STA. 5+12, 5+17, & 5+55.  
 - ADDED NOTE FOR REMOVAL OF EXIST. M.H. AT STA. 5+50.  
 APPROVED: *James H. Miller* DATE: *1/21/71*  
 OFFICE OF COUNTY ENGINEER



P.C. 8592 PAGE 2  
 DOUBLE SCALE  
 NO CHANGE POINTS  
 CONSTRUCTION BY  
 CONTRACTOR  
 SEE L.V.M.W.D.  
 FOR CONNECTION  
 CHARGES  
 42728