

B.M. # 20 ELEV. 462.521
 F.B. 2925, Pg. 101, to 109
 Arcadia Co. Park 92.0' So. of Bowling
 Green Clubhouse Bldg. # 2412 C.S. mon. dn. 3'
 middle of grass walk between Bowling greens
 N 3133.50 E 4627.60

NOTICE TO CONTRACTOR
 THE EXISTENCE AND LOCATION OF ANY UNDERGROUND UTILITY PIPES OR STRUCTURES SHOWN ON THESE PLANS ARE DETERMINED BY A SEARCH OF THE AVAILABLE RECORDS. TO THE BEST OF OUR KNOWLEDGE THERE ARE NO EXISTING UTILITIES EXCEPT AS NOTED ON THIS MAP.
 THE CONTRACTOR IS REQUIRED TO TAKE PRECAUTIONARY MEASURES TO PROTECT THE UTILITY LINES SHOWN AND ANY OTHER LINES NOT OF RECORD OR NOT SHOWN ON THIS DRAWING.

GENERAL NOTES:
 REFER TO SECTION 1101.1 OF STANDARD SPECIFICATIONS REGARDING SAFETY DEVICES.
 ALL MANHOLES SHALL BE EITHER BRICK PER S.2 OF SECTION 306.1.12 OR PRECAST CONCRETE PER S.23.
 "T" OR "T" BRANCHES MAY BE USED FOR CONNECTIONS TO MAIN LINE SEWER, EXCEPT AS NOTED.
 VITRIFIED CLAY PIPE JOINTS SHALL BE TYPE "B", "F", OR "G" PER SECTION 306.2 OF STANDARD SPECIFICATIONS.
 ALL JOINTS BETWEEN 4" OR 6" PIPE AND VITRIFIED CLAY PIPE SHALL BE MADE WITH A RUBBER GASKET JOINT, TYPE "B" OR "F" PER SECTION 306.2 OF STANDARD SPECIFICATIONS.
 SEWERS TO BE TESTED FOR LEAKAGE PER SECTION 306.3.7 OF STANDARD SPECIFICATIONS AND SPECIAL PROVISIONS.
 IF A POWER POLE IS WITHIN THREE FEET OF THE SEWER, THE SEWER SHALL BE ENCASED, PER S.23 CASE II, TWO FEET ON EACH SIDE FROM THE POINT OF INTERFERENCE.
 CONTRACTOR SHALL SAFEGUARD WITH INVERT OF PROPERTY LINE & FEET BELOW CURB GRADE, OR GRADE OF CENTER LINE OF STREET, EXCEPT AS NOTED.
 INDICATED DEPTH BELOW CURB GRADE, OR GRADE OF CENTER LINE OF STREET.
 INDICATED DEPTH BELOW CURB GRADE, OR GRADE OF CENTER LINE OF STREET.
 INDICATED "T" OR "T" SHALL BE SAID HORIZONTAL AND HOUSE LATERAL SHAPE OF CONSTRUCTION WITH "S" SIZE PER FOOT TO PROPERTY LINE.
 ALL HOUSE LATERALS SHALL BE CONSTRUCTED IN A STRAIGHT ALIGNMENT OF RIGHT ANGLES FROM THE MAIN LINE SEWER EXCEPT AS SHOWN ON THE PLANS. HOUSE LATERALS SHALL BE ENCASED WITH 12" DIA. PER FOOT TO PROPERTY LINE.
 MAIN LINE SEWER.
 ALL CONCRETE CURBS, GUTTERS, CURBS, GUTTERS, PAYMENTS, AND DRIVEWAYS SHALL BE TUNNELED OR JACKED PER LOS ANGELES COUNTY ROAD DEPARTMENT REQUIREMENTS.
STREET RESURFACING:
 STREET RESURFACING METHODS SHALL BE IN ACCORDANCE WITH SECTION 306.1.12 OF THE SPECIAL PROVISIONS.
 REPAIRS TO FRENCH WITHIN PAVED AREA IN KIND AND THICKNESSES.
 BEVERAGE FLOWS SHALL BE MAINTAINED DURING THE CONSTRUCTION OF THE NEW SEWER AT ALL TIMES.
 County Sanitation Districts shall be notified prior to the following so that their required inspection can be made (Phone 337-1025 & 838-1161).
 Agreements of the project.
 No connections for the disposal of industrial wastes shall be made to sewers shown on these drawings without written permission from the Chief Engineer and General Manager of the County Sanitation Districts.

J.N. 8773.56 PAGE 1

CASH CONTRACT NO. 8593

ARCADIA COUNTY PARK
 GOLF COURSE CLUBHOUSE
 SEWER RELOCATION

43041

1 SHEET, 2 PAGES

SCALE VERT. 1" = 4'
 HORIZ. 1" = 40'

COUNTY OF LOS ANGELES, CALIFORNIA
 HARVEY T. BRANDT COUNTY ENGINEER

APPROVED *Robert S. Wilson* 8-18-71
 SANITATION DIVISION ENGINEER (DATE)

DESIGNED *John D. Parkhurst*
 REG. C.E. NO. 10443 (DATE 8-18-71)

JOHN D. PARKHURST
 CHIEF ENGINEER OF COUNTY
 SANITATION DISTRICT NO.

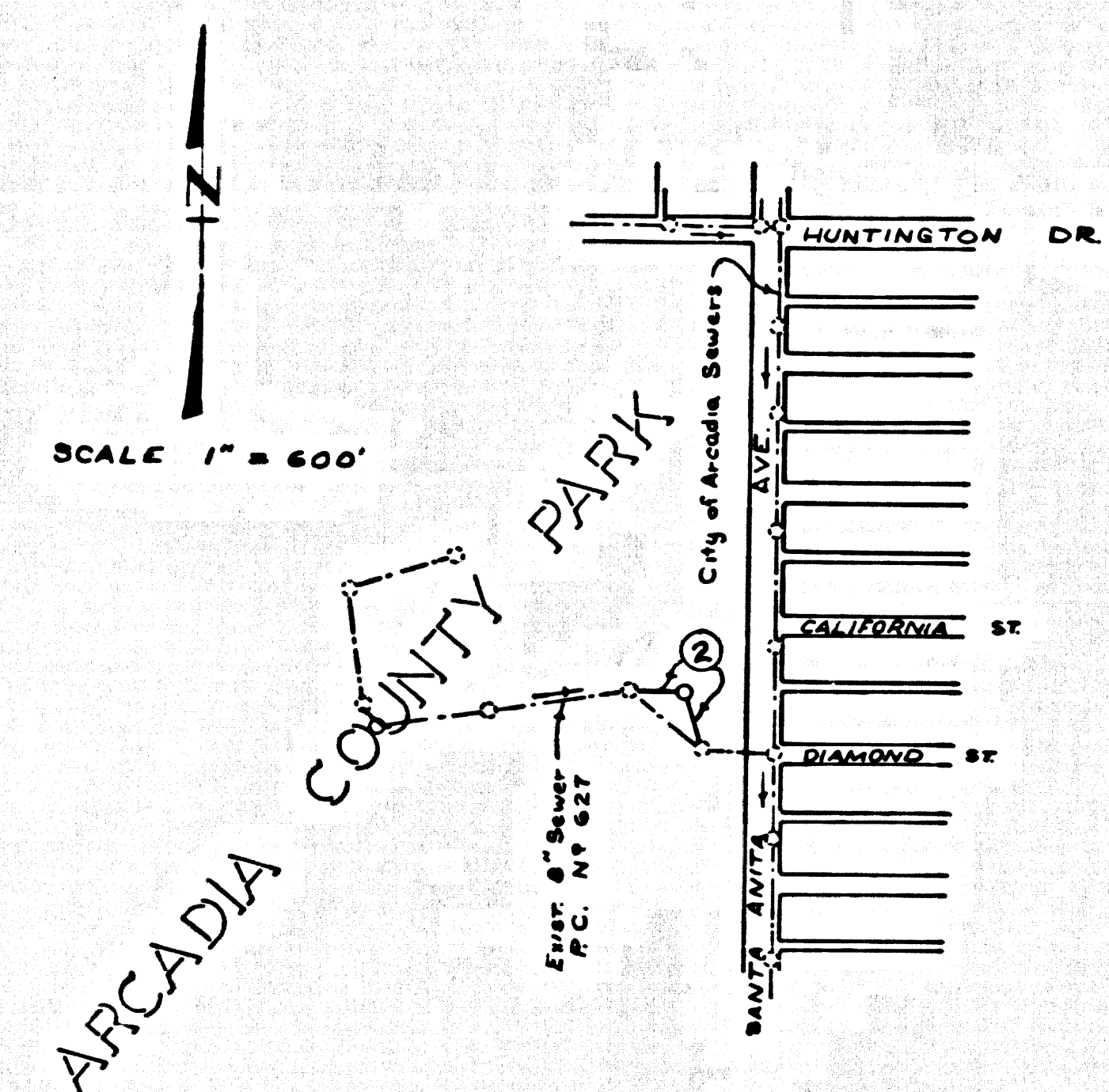
APPROVED *J. Parkhurst*
 OFFICE ENGINEER

NOTES:
 WORK SHALL BE CONSTRUCTED ACCORDING TO THE STANDARD SPECIFICATIONS FOR PUBLIC WORKS CONSTRUCTION 1976 EDITION WITH 1971 SUPPLEMENTS AND COUNTY ENGINEER SPECIAL PROVISIONS FOR THE CONSTRUCTION OF SANITARY SEWERS DATED APRIL 7, 1970 AND SHALL BE PROSECUTED ONLY IN THE PRESENCE OF THE COUNTY ENGINEER.
 THE CONTRACTOR SHALL NOTIFY THE CONSTRUCTION DIVISION BY TELEPHONE 629-8747, EXT. 81331 AT LEAST 24 HOURS BEFORE STARTING ANY WORK UNDER THIS CONTRACT.
 GRADES TO WHICH THIS IMPROVEMENT IS TO BE CONSTRUCTED ARE SHOWN ON PLANS AND PROFILES. GRADE POINTS FOR TOP OF CURB, CENTER LINE OF STREET OR CENTER LINE OF ALLEY ARE SHOWN BY CIRCLES ON PROFILES. AT ALL POINTS BETWEEN DESIGNATED POINTS THE GRADE SHALL BE ESTABLISHED SO AS TO CONFORM TO A STRAIGHT LINE DRAWN BETWEEN SAID DESIGNATED POINTS. ELEVATIONS ARE IN FEET ABOVE U.S.C. & G.S., SEA LEVEL DATUM OF 1929.
 THIS DRAWING AND THE DATA HEREON ARE HEREBY MADE A PART OF THE SPECIFICATIONS.

THE FOLLOWING LATEST REVISED STANDARD PLANS ON FILE IN THE OFFICE OF COUNTY ENGINEER SHALL APPLY IN THE CONSTRUCTION OF THIS PROJECT.

LEGEND	S.1	CRADING AND ENCASUREMENT	S.23
MINIMUM PUBLIC SAFETY REQUIREMENT	S.2	STANDARD WYE OR TEE SUPPORT	S.26
BRICK MANHOLE	S.3	ALLOWABLE TRENCH WIDTHS	S.33
MANHOLE STEP	S.17	LOCKING MANHOLE FRAME AND COVER	S.33
BEDDING FOR SEWER PIPE	S.31	NON-REINFORCED PRECAST CONCRETE MANHOLE	S.36
SPECIAL SUPPORT AND PROTECTION	S.22		

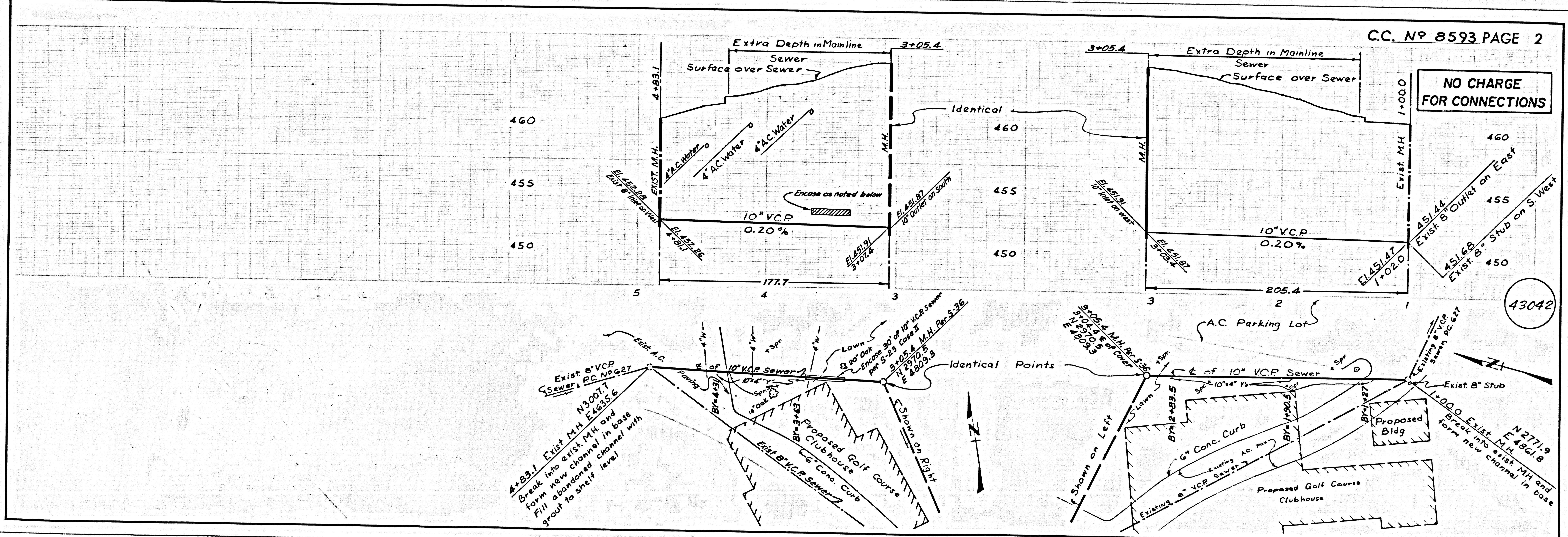
PRIVATE SEWER



INDEX MAP
 C.C. No 8593

LAYOUT	Thornton	4-71	CHECKED	MOCIANO	4-71
TRACED	Thornton	4-71	MAINTENANCE	A.B.	
F.B.	2925	PAGES 101 to 109			W.S. 45

BUILDING DISTRICT NO.



C.C. No 8593 PAGE 2

NO CHARGE FOR CONNECTIONS

43042

ME THE OFFICIAL