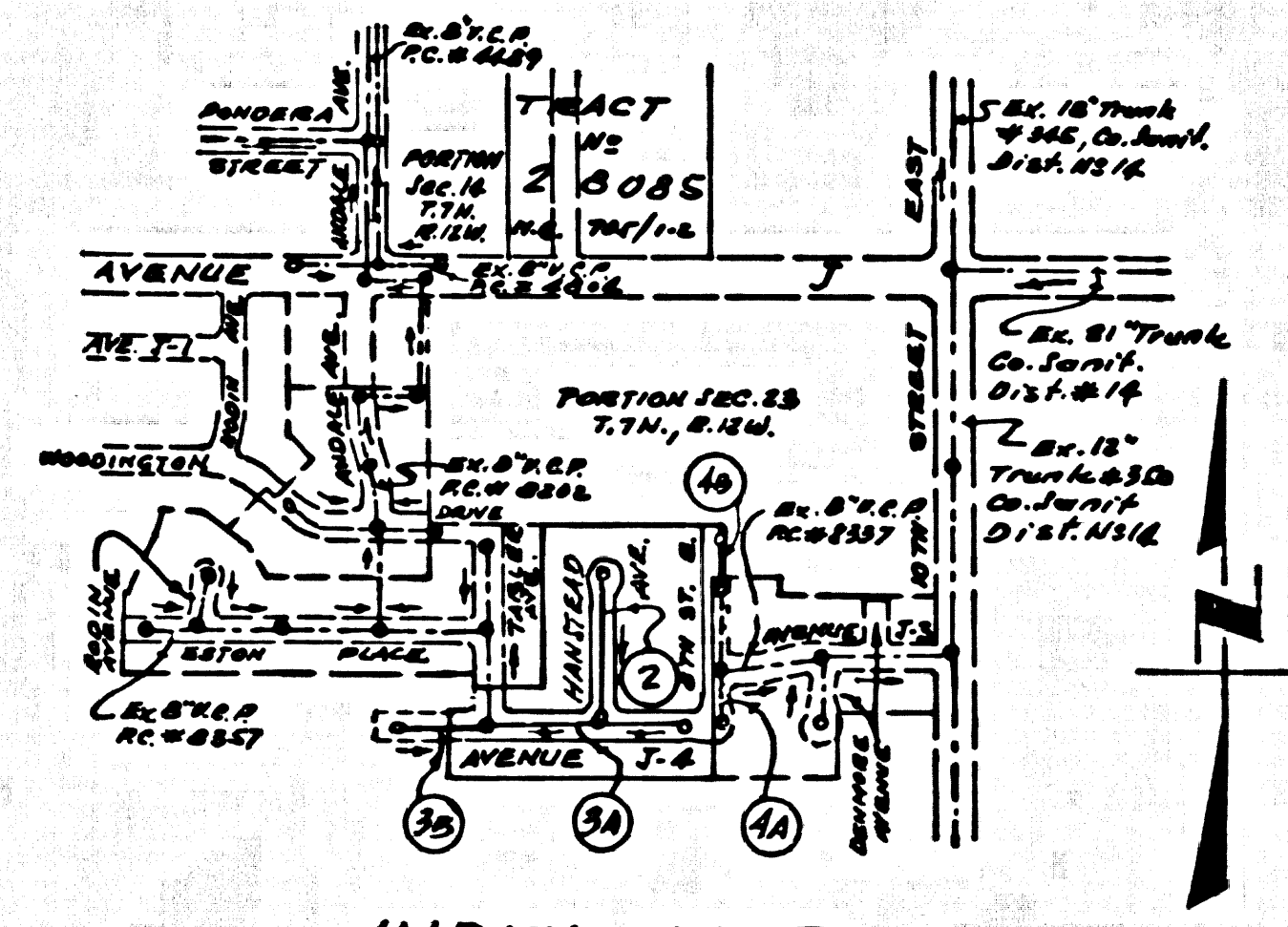


B.M. B.L. 65 ELEV. 2391.642
 C.S. MON. IN WELL @ INTERSECTION
 AVENUE "J" AND 5TH STREET EAST,
 M.M.D. (174, R.124), 1/4 CH. 12-13, A. 6092
 LANCASTER QUAD. 19 65



INDEX MAP
 SCALE 1" = 600'
 P.C. 8595
 TRACT NO. 26420

LOT 24 OF TRACT NO.
 26420 IS SERVED BY
 P.C. 8357

County Sanitation Districts shall be notified prior to the following so that required inspection can be made (Phone 537-1025 - - 638-110)

Acceptance of the project.
 No Junctions for the disposal of industrial wastes shall be made to sewers shown on these drawings without written permission from the Chief Engineer and General Manager of the County Sanitation Districts.

LANCASTER BLDG. DIST. NO. 8

TRACT NO. 26420
 PRIVATE CONTRACT NO. 8595

W.S. 70
 2 SHEETS, 4 PAGES

SCALE: VERT. 1" = 4' SEPTEMBER, 1970

PREPARED IN THE OFFICES OF
 CONSOLIDATED ENGINEERING CO.
 3825 W. OLYMPIC BLVD.
 BEVERLY HILLS, CALIFORNIA
 BY: *Charles DeWitt* 5/24/71
 REG. C. E. NO. 17815

42562

FOR LEGEND SEE PLAN NO. S-1

- NOTES
1. PROVIDE STAKES ON THE PROPERTY LINE OR PROPERTY LINES PRODUCED AT RIGHT ANGLES TO THE SEWER LINE AT THE CENTER LINE OF EACH MANHOLE.
 2. NO DIMENSIONS OF THE COUNTY ENGINEER WILL SURVEY OR LAY OUT ANY PORTION OF THE WORK.
 3. THE PRIVATE ENGINEER SHALL FURNISH THE COUNTY ENGINEER WITH CLEAR SHOTS AND STATIONINGS FOR ALL HOUSE LATERALS AND "T" BRANCHES AND SHALL PROVIDE STAKES FOR THEM AT THEIR PROPER LOCATIONS WITH STATIONINGS PLAINLY MARKED. ALL HOUSE LATERALS SHALL BE CONSTRUCTED IN A STRAIGHT ALIGNMENT AT RIGHT ANGLES FROM THE MAIN LINE SEWER EXCEPT AS SHOWN ON THE PLANS. HOUSE LATERALS FROM CHIMNEYS SHALL NOT HAVE AN ANGLE OF LESS THAN 45° WITH THE MAIN LINE SEWER. ANY CHANGE IN ALIGNMENT SHALL BE REQUESTED IN WRITING BY THE PRIVATE ENGINEER.
 4. THE PRIVATE ENGINEER SHALL FURNISH THE HOUSE LATERAL DEPTH AT THE PROPERTY LINE BELOW THE TOP OF CURB ELEVATION FOR EACH HOUSE LATERAL ON THE GRADE SHEET.
 5. NO REVISIONS SHALL BE MADE IN THESE PLANS WITHOUT THE APPROVAL OF THE COUNTY ENGINEER.
 6. THE CONTRACTOR SHALL NOTIFY THE CONSTRUCTION DIVISION BY TELEPHONE, HANSHON 9-66, EXT. 6158, AT LEAST TWENTY-FOUR HOURS BEFORE STARTING ANY WORK UNDER THE CONTRACT.
 7. MANHOLES SHALL BE CAST CONCRETE STRUCTURES PER S. 1, CAST CONCRETE MANHOLES PER S. 2, MAY BE USED AS AN APPROVED BY LOCALITIES APPROVED BY THE COUNTY ENGINEER.
 8. "Y" OR "Y" BRANCHES MAY BE USED FOR CONNECTIONS TO MAIN LINE SEWER EXCEPT AS NOTED.
 9. USE EXTRA STRENGTH PIPE. ALL PIPE IS STANDARD DEPTH EXCEPT AS NOTED.
 10. VITRIFIED CLAY PIPE JOINTS SHALL BE TYPE "D", "E" OR "S" PER STD. SPECIFICATIONS SEC. 208-8.
 11. IF A POWER POLE IS WITHIN THREE FEET OF THE SEWER, THE SEWER SHALL BE ENCASED, PER S. 25, TWO FEET ON EACH SIDE FROM THE POINT OF INTERFERENCE.
 12. IF DURING THE COURSE OF CONSTRUCTION IT IS DETERMINED THAT THERE IS LESS THAN FOUR FEET OF COVER OVER THE TOP OF A MAIN LINE OR HOUSE LATERAL V.C.P. SEWER WHICH IS NOT INDICATED ON THE PLANS, THE PIPE SHALL BE ENCASED PER S. 25, UNLESS OTHERWISE APPROVED BY THE COUNTY ENGINEER.
 13. HOUSE LATERALS TO BE CONSTRUCTED WITH INVERTS AT PROPERTY LINE 6 FEET BELOW CURB GRADE EXCEPT AS NOTED.
 14. RESURFACE ALL TRENCHES WITHIN PAVED AREAS TO MEET L.A. COUNTY ROAD DEPT. OR CALIFORNIA STATE HIGHWAY REQUIREMENTS IN ACCORDANCE WITH PERMITS.
 15. SEWERS TO BE TESTED FOR LEAKAGE PER SEC. 208, 2.1.7 OF THE STATE SPEC'S AND SPEC. PROVISIONS.
 16. ALL STATE AND LOCAL TRENCH SAFETY ORDERS WILL BE STRICTLY ENFORCED, AND SHALL COMPLY WITH STD. SPECIFICATIONS SECTION 7-106.

THE FOLLOWING COUNTY ENGINEER STANDARD PLANS APPLY TO THIS PROJECT:

LEGEND	MINIMUM EXCAVATION SAFETY REQUIREMENTS	S-1
BRICK MANHOLE	MINIMUM EXCAVATION SAFETY REQUIREMENTS	S-1
CAST CONCRETE MANHOLE	MINIMUM EXCAVATION SAFETY REQUIREMENTS	S-1
MANHOLE FRAME AND COVER	MINIMUM EXCAVATION SAFETY REQUIREMENTS	S-1
MANHOLE STOP	MINIMUM EXCAVATION SAFETY REQUIREMENTS	S-1
BRICK MANHOLE	MINIMUM EXCAVATION SAFETY REQUIREMENTS	S-1
CAST CONCRETE MANHOLE	MINIMUM EXCAVATION SAFETY REQUIREMENTS	S-1
MANHOLE FRAME AND COVER	MINIMUM EXCAVATION SAFETY REQUIREMENTS	S-1
MANHOLE STOP	MINIMUM EXCAVATION SAFETY REQUIREMENTS	S-1
BRICK MANHOLE	MINIMUM EXCAVATION SAFETY REQUIREMENTS	S-1
CAST CONCRETE MANHOLE	MINIMUM EXCAVATION SAFETY REQUIREMENTS	S-1
MANHOLE FRAME AND COVER	MINIMUM EXCAVATION SAFETY REQUIREMENTS	S-1
MANHOLE STOP	MINIMUM EXCAVATION SAFETY REQUIREMENTS	S-1

NOTICE TO CONTRACTOR
 The existence and location of any underground utility pipes or structures shown on these plans are obtained by a search of the available records to the best of my knowledge there are no missing utilities except as shown on these plans. The contractor is required to take due precautionary measures to protect the utility lines shown and any other lines not of record or not shown on these plans.
Charles DeWitt 5/24/71
 R.E. 1051

COLLECT CHARGES AS INDICATED

COUNTY OF LOS ANGELES, CALIFORNIA
 HARVEY L. BEARD, COUNTY ENGINEER
 J. D. PARKURST, CHIEF ENGINEER
 CO. SAN. DIST. NO. 14
 APPROVED BY: *H. Williams*
 OFFICE ENGINEER

APPROVED BY: *John D. Anderson* 5/6/71
 CHIEF ENGINEER
 CHECKED BY: *R.A. Koppeler* 5/4/71
 REG. NO. 45742

J.N. 0250.02

