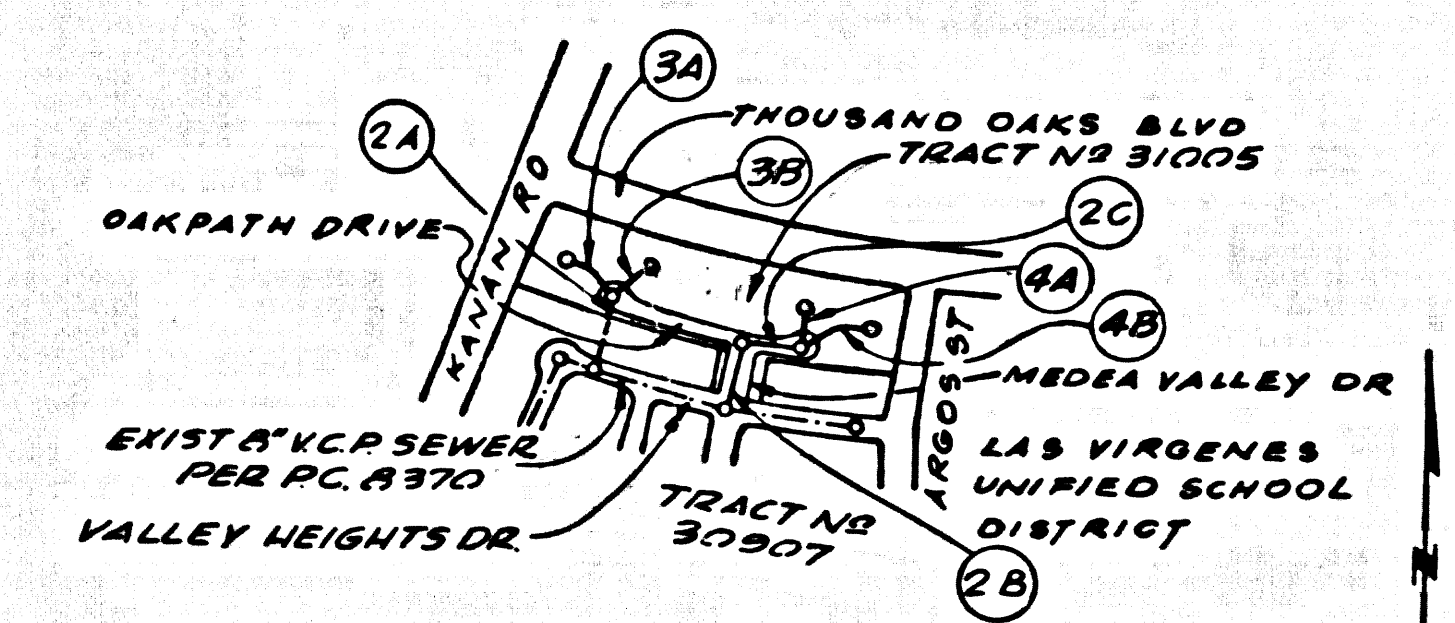


B.M. BY 7552 ELEV. 894.107  
 ROBM TAG 1 FT N 80° W 60 FT TO CORNER KANAN  
 RD. & CANWOOD ST. 60 FT N 40° ST.  
 E & INT. 250 FT. N BRIDGE 53-945  
 OVER VENTURA FWY  
 MALIBU QUAD. 1965



INDEX MAP  
 SCALE: 1" = 600'  
 P.C. 8596

NOTES CONT:  
 20. FULL COMPLIANCE WITH SECTION 806-1.9.3 OF THE SPECIAL PROVISIONS WILL BE REQUIRED FOR BACKFILL IN STREETS. CERTIFICATION OF BACKFILL COMPACTION AND SAND EQUIVALENTS BY A QUALIFIED REGISTERED TESTING LABORATORY SHALL BE PROVIDED BY THE PERMITTEE PRIOR TO THE ISSUANCE OF A CERTIFICATE OF PARTIAL ACCEPTANCE.

CALABASAS BLDG. DIST. NO. 9.1

PROFILE, ALIGNMENT AND GRADE OF  
**SANITARY SEWERS** P.C. 8596  
 TO BE CONSTRUCTED IN PAGE 1  
 TRACT No 31005

PRIVATE CONTRACT NO. 8596

W.S. 90  
 2 SHEETS, 4 PAGES

SCALE: VERT. 1" = 4'  
 HORIZ. 1" = 40' FEBRUARY, 1971

PREPARED IN THE OFFICES OF  
**CF BRAUN & CO ENGINEERS**  
 ALHAMBRA CALIFORNIA  
 REG. C. E. NO. 14394

- NOTES:
- HOUSE LATERALS TO BE CONSTRUCTED WITH INVERTS AT PROPERTY LINE & FEET BELOW CURB GRADE EXCEPT AS NOTED.
  - POURER SLABS ON THE PROPERTY LINE OR PROPERTY LINES PRODUCED AT RIGHT ANGLES TO THE SEWER LINE AT THE CENTER LINE OF EACH MANHOLE.
  - NO REPRESENTATIVE OF THE COUNTY ENGINEER WILL SURVEY OR LAY OUT ANY PORTION OF THE WORK.
  - THE PRIVATE ENGINEER SHALL FURNISH THE COUNTY ENGINEER WITH GRADE SHEETS AND STATIONING FOR ALL HOUSE LATERALS AND "T" OR "Y" BRANCHES AND SHALL PROVIDE STAKES FOR THEM AT THEIR PROPER LOCATIONS WITH STATIONING PLAINLY MARKED. ALL HOUSE LATERALS SHALL BE CONSTRUCTED IN A STRAIGHT ALIGNMENT AT RIGHT ANGLES FROM THE MAIN LINE SEWER EXCEPT AS SHOWN ON THE PLANS. HOUSE LATERALS FROM CHIMNEYS SHALL NOT HAVE AN ANGLE OF LESS THAN 45° WITH THE MAIN LINE SEWER. ANY CHANGE IN ALIGNMENT SHALL BE REQUESTED IN WRITING BY THE PRIVATE ENGINEER.
  - THE PRIVATE ENGINEER SHALL DETERMINE THE HOUSE LATERAL DEPTH AT THE PROPERTY LINE BELOW THE TOP OF CURB ELEVATION FOR EACH HOUSE LATERAL ON THE GRADE SHEET.
  - NO REVISIONS SHALL BE MADE IN THESE PLANS WITHOUT THE APPROVAL OF THE COUNTY ENGINEER.
  - THE CONTRACTOR SHALL NOTIFY THE CONSTRUCTION DIVISION BY TELEPHONE, MADISON 9-0747, EXT. 81581, AT LEAST TWENTY-FOUR HOURS BEFORE STARTING ANY WORK UNDER THIS CONTRACT.
  - ALL STRUCTURES SHALL BE EITHER BRICK MANHOLE PER S.E.C. 806-2.3.7(C) OR PRECAST CONCRETE MANHOLE PER S-36 EXCEPT AS NOTED.
  - "T" OR "Y" BRANCHES MAY BE USED FOR CONNECTIONS TO MAINLINE SEWERS EXCEPT AS NOTED.
  - MANHOLE TOPS IN UNIMPROVED AREAS OF WAYS TO BE SIX INCHES ABOVE FINISHED GRADE OR LEVEL WITH FINISHED GRADE WHERE THE ROAD IS "STREET" OR "WAY".
  - USE EXTRA STRENGTH PIPE. ALL PIPE IS STANDARD DEPTH EXCEPT AS NOTED.
  - VITRIFIED CLAY PIPE JOINTS SHALL BE TYPE "B", "C", OR "D" PER STANDARD & INDICATIONS SECTION 806-2.
  - IF A POWER POLE IS WITHIN THREE FEET OF THE SEWER, THE SEWER SHALL BE ENCASED, PER S.23, TWO FEET ON EACH SIDE FROM THE POINT OF INTERFERENCE.
  - IF DURING THE COURSE OF CONSTRUCTION IT IS DETERMINED THAT THERE IS LESS THAN FOUR FEET OF COVER OVER THE TOP OF A MAIN LINE OR HOUSE LATERAL V.C.P. SEWER WHICH IS NOT INDICATED ON THE PLANS, THE PIPE SHALL BE ENCASED PER S.23, UNLESS OTHERWISE APPROVED BY THE COUNTY ENGINEER.
  - SEWERAGE ALL TRENCHES WITHIN PAVED AREAS TO MEET L.A. COUNTY ROAD DEPT. OR CALIFORNIA STATE HIGHWAY REQUIREMENTS IN ACCORDANCE WITH PERMITS.
  - SEWERS TO BE TESTED FOR LEAKAGE BY AIR TEST METHOD PER SEC. 806-2.3.7(C) OF THE STANDARD SPEC'S.
  - REFER TO SECTION 7-18.1.1 OF THE STANDARD SPECIFICATIONS, REGARDING SAFETY ORDS.
  - ALL JOINTS BETWEEN CLAY PIPE AND VITRIFIED CLAY PIPE SHALL BE MADE WITH A RUBBER SLEEVE JOINT, TYPE "C" OR "D".
  - FIGURES IN CIRCLES AT END OF HOUSE LATERALS INDICATE DEPTH BELOW CURB & GRADE OF THE PRODUCT.

LEGEND	..... S. 36
MINIMUM PUBLIC SAFETY REQUIREMENTS	..... S. 23
BRICK MANHOLE	..... S. 36
NON-REINFORCED PRECAST CONCRETE MANHOLE	..... S. 36
MANHOLE FRAME AND COVER	..... S. 23
STANDARD MANHOLE STEP	..... S. 23
BEDDING FOR SEWER PIPE	..... S. 23
CHARGING AND ENCASEMENT	..... S. 23
WYS ON THE SURFACE	..... S. 23
ALLOWABLE TRENCH WIDTHS	..... S. 23

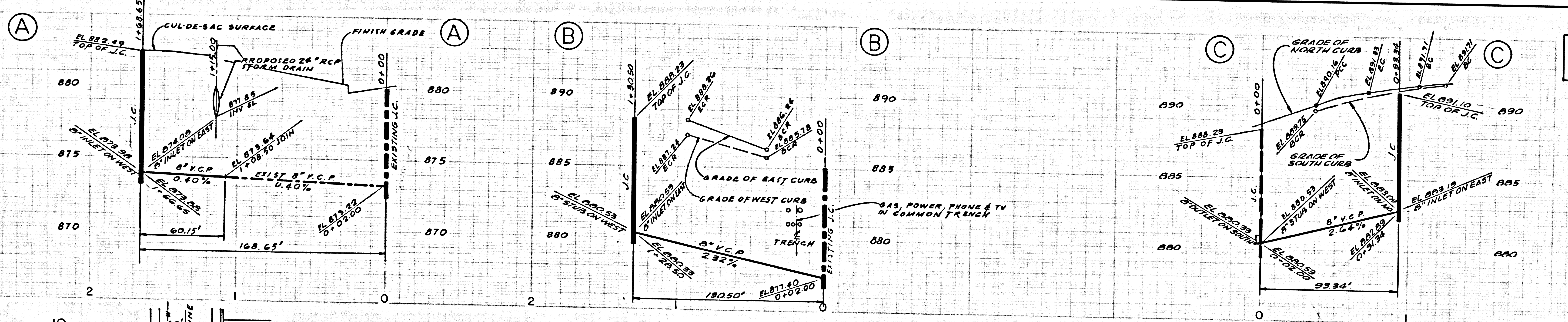
NOTES:  
 GRADES TO WHICH THIS IMPROVEMENT IS TO BE CONSTRUCTED ARE SHOWN ON PLANS AND PROFILES. GRADE POINTS FOR TOP OF CURBS, CENTER LINE OF STREETS, OR CENTER LINE OF ALLEYS ARE SHOWN BY CIRCLES ON PROFILES. AT ALL POINTS BETWEEN DESIGNATED POINTS THE GRADE SHALL BE ESTABLISHED SO AS TO CONFORM TO A STRAIGHT LINE DRAWN BETWEEN SAID DESIGNATED POINTS. ELEVATIONS ARE IN FEET ABOVE U.S.C. & G.S. MEAN BATHY OF THE SEA.  
 WORK SHALL BE CONSTRUCTED ACCORDING TO THE STANDARD SPECIFICATIONS FOR PUBLIC WORKS CONSTRUCTION AND SPECIAL PROVISIONS FOR THE CONSTRUCTION OF SANITARY SEWERS DATED JULY 14, 1970 AS REVISED, AND SHALL BE PROSECUTED ONLY IN THE PRESENCE OF THE COUNTY ENGINEER.  
 BEFORE WORK CAN BE STARTED, THE CONTRACTOR MUST OBTAIN A PERMIT TO EXCAVATE IN COUNTY STREETS FROM THE L. A. COUNTY ROAD DEPT., DISTRICT OFFICE NO. 3, AND PAY A FEE TO THE COUNTY ENGINEER, ROOM 326, COUNTY ENGINEERING DEPARTMENT, 100 WEST SECOND STREET OR M.A.L.R.V. DISTRICT OFFICE, REGIONAL OFFICE, HARBOR DRIVE, LOS ANGELES, CALIFORNIA.  
 APPROVAL OF THIS PLAN BY THE COUNTY OF LOS ANGELES DOES NOT CONSTITUTE A REPRESENTATION AS TO THE ACCURACY OF THE LOCATION OF OR THE EXISTENCE OR NON-EXISTENCE OF ANY UNDERGROUND UTILITY PIPE, OR STRUCTURE WITHIN THE LIMITS OF THE PROJECT. THIS NOTE APPLIES TO ALL PAGES.  
 IF WORK IS TO BE DONE IN A STATE HIGHWAY, A PERMIT MUST BE OBTAINED FROM THE STATE OF CALIFORNIA, DIVISION OF HIGHWAYS, 120 SOUTH SPRING STREET, LOS ANGELES, CALIFORNIA.

COUNTY OF LOS ANGELES, CALIFORNIA  
 HARVEY T. BRANDT, COUNTY ENGINEER  
 APPROVED BY *Sam M. Miller* 7/28/71 REGIONAL ENGINEER (DATE)  
 APPROVED BY *W. S. Stokes* GENERAL MGR. - CHIEF ENG'G (DATE)  
 CHECKED BY *James J. Gorman* 7/28/71 (DATE)  
 REG. C. E. NO. 17722

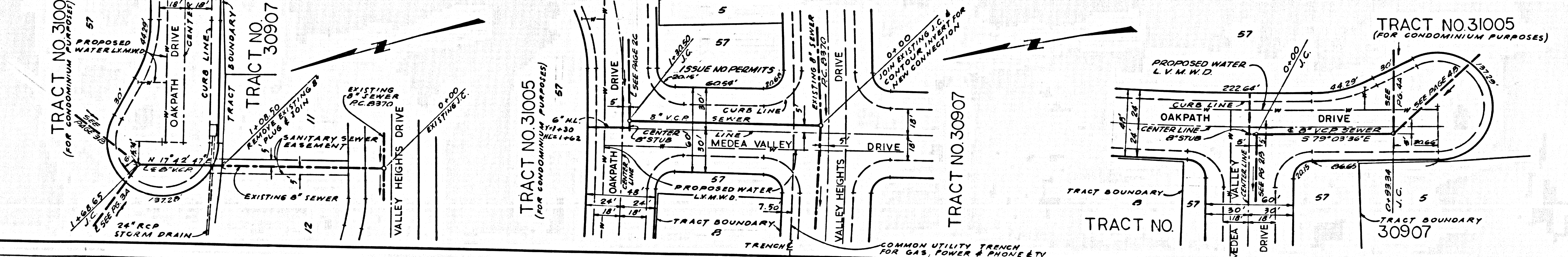
COLLECT CHARGES AS INDICATED

43189

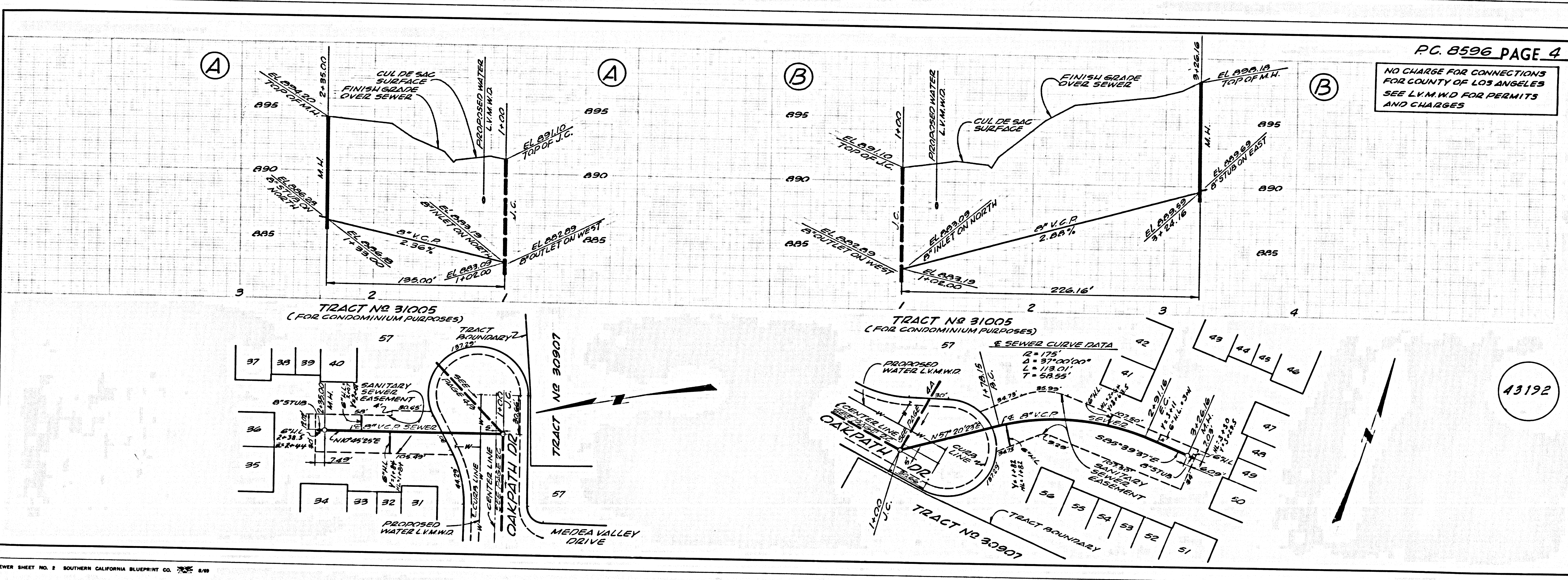
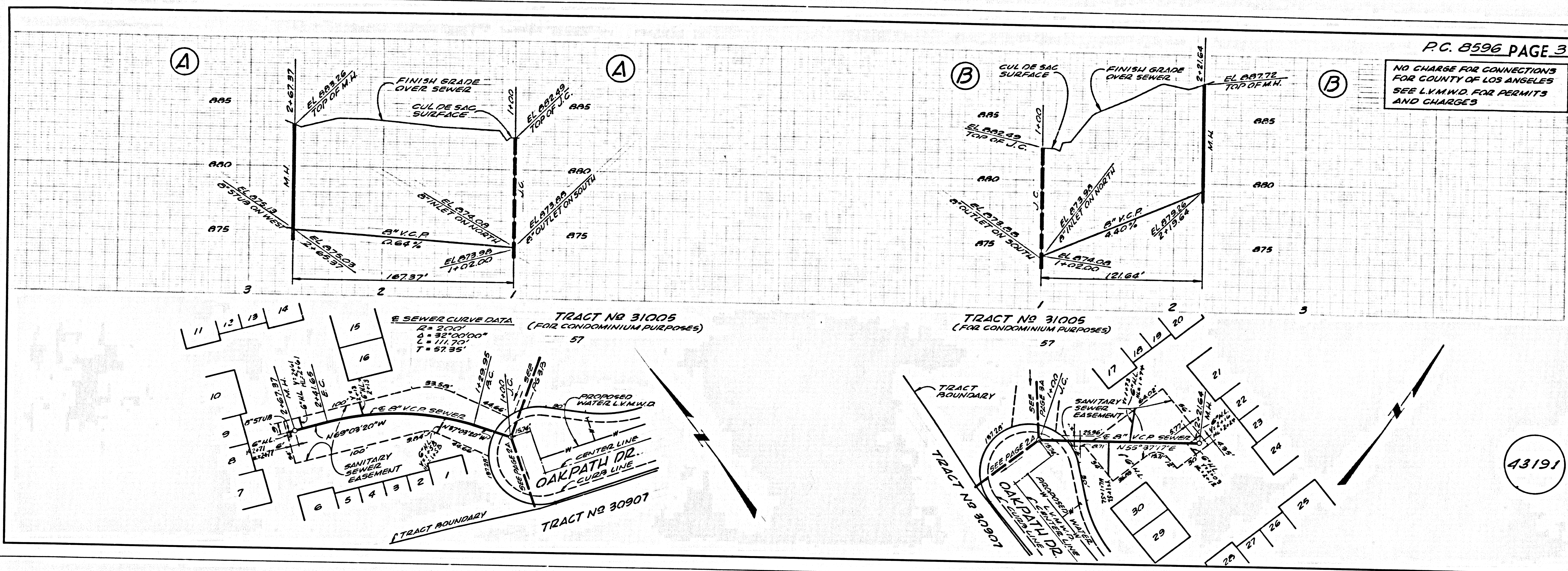
J.N. 025002



P.C. 8596 PAGE 2  
 NO CHARGE FOR CONNECTIONS FOR COUNTY OF LOS ANGELES SEE LYMWD FOR PERMITS AND CHARGES



43190



3501 100 00 141