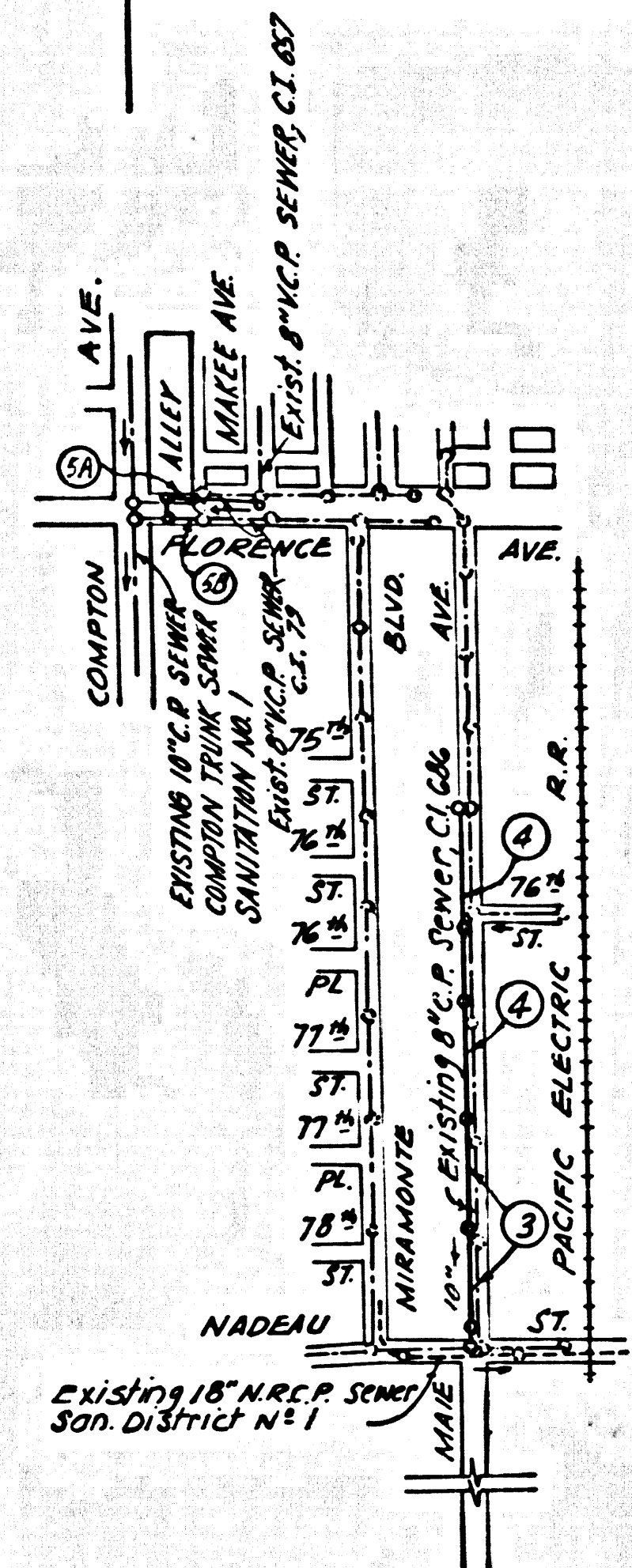


B.M. V.F. 106 ELEV. 143.330  
 MAIE AVENUE EAST SIDE 70.8'  
 NORTH OF NADEAU STREET  
 BT. SPK. IN CURB 5' NORTH OF PRODUCE  
 SOUTH EDGE OF BLDG. # 7720



INDEX MAP  
 SCALE: 1"=600'  
 C.C. NO. 8597-B  
 NOTE: Figures in circle indicates page number ③

**NOTICE TO CONTRACTOR**  
 1. THE EXISTENCE AND LOCATION OF ANY UNDERGROUND UTILITY PIPES OR STRUCTURES SHOWN ON THESE PLANS ARE OBTAINED BY A SEARCH OF THE AVAILABLE RECORDS. TO THE BEST OF OUR KNOWLEDGE THERE ARE NO EXISTING UTILITIES EXCEPT AS NOTED ON THIS MAP. THE CONTRACTOR IS REQUIRED TO TAKE PRECAUTIONARY MEASURES TO PROTECT THE UTILITY LINES SHOWN AND ANY OTHER LINES NOT OF RECORD OR NOT SHOWN ON THIS DRAWING.  
 2. PRIOR TO TRENCH EXCAVATION, THE CONTRACTOR SHALL SUBMIT TO AND OBTAIN APPROVAL FROM THE COUNTY ENGINEER OF A DETAILED PLAN SHOWING THE DESIGN OF SHORING, BRACING, SLOPING, OR OTHER PROVISIONS FOR WORKER PROTECTION FROM THE HAZARD OF COLLAPSE. IF SUCH PLAN VARIES FROM THE SHORING SYSTEM STANDARDS ESTABLISHED BY THE CONSTRUCTION SAFETY ORDERS, IT SHALL BE PREPARED BY A REGISTERED CIVIL OR STRUCTURAL ENGINEER.

County Sanitation Districts shall be notified prior to the following so that required inspection can be made (Phone 902-8606 - 638-1101)

Commencement of construction of manhole on District trunk sewer.

Acceptance of the project.

No connections for the disposal of industrial wastes shall be made to sewers shown on these drawings without written permission from the Chief Engineer and General Manager of the County Sanitation Districts.

3	ADDED ELEC. CONDUITS ON PAGES 3 & 5A	W. N. Maga	7-25-75
2	CHANGE OF INVERT ELEVATIONS, PAGES 3 & 5.	R. L. Maga	5-7-75
1	RELOCATED SEWER IN MAIE AVE. FROM 15" TO 6" STREET L.	M. H. Maga	10/21/74
REVISION		APPROVED	DATE

**FIRESTONE BUILDING DISTRICT NO. 1**  
 REFER TO SECTION 710-4.1 OF STANDARD SPECIFICATIONS REGARDING SAFETY ORDERS.  
 ALL MANHOLES SHALL BE EITHER BRICK PER 5.3 OR PRECAST CONCRETE PER 5.36, EXCEPT AS NOTED.  
 "T" OR "Y" BRANCHES MAY BE USED FOR CONNECTIONS TO MAIN LINE SEWER, EXCEPT AS NOTED.  
 VITRIFIED CLAY PIPE JOINTS SHALL BE TYPE "B", "T", OR "G" PER SECTION 208-3 OF STANDARD SPECIFICATIONS.  
 ALL JOINTS BETWEEN CLAY PIPE AND VITRIFIED CLAY PIPE SHALL BE MADE WITH A RUBBER SLEEVE JOINT, TYPE "C" OR "D" (WITH BUSHING IF NECESSARY) PER SECTION 208-3 OF STANDARD SPECIFICATIONS.  
 SEWERS TO BE TESTED FOR LEAKAGE PER SECTION 206-1.6 OF STANDARD SPECIFICATIONS AND SPECIAL PROVISIONS.  
 IF A POWER POLE IS WITHIN THREE FEET OF THE SEWER, THE SEWER SHALL BE ENCASED, PER 5.23 CASE II, TWO FEET ON EACH SIDE FROM THE POINT OF INTERFERENCE.  
 USE LOCKING MANHOLE FRAMES AND COVERS PER 5-35, EXCEPT AS NOTED.  
 ALL PIPES OF STANDARD-DIMENSIONAL STRENGTH VITRIFIED CLAY PIPE, EXCEPT AS NOTED.  
 NO REVISIONS SHALL BE MADE IN THESE PLANS WITHOUT THE APPROVAL OF THE COUNTY ENGINEER.  
 CONTRACTOR SHALL MAINTAIN SEWER SERVICE AT ALL TIMES DURING CONSTRUCTION OF MAIN LINE SEWERS AND HOUSE LATERALS.  
 ALL SEWER PIPES AND APPURTENANCES SHALL BE APPROVED IN ACCORDANCE WITH SEC. 306-8 OF STD. SPEC'S.  
 ALL HOUSE LATERALS SHALL BE CONSTRUCTED IN A STRAIGHT ALIGNMENT AT RIGHT ANGLES FROM THE MAIN LINE SEWER EXCEPT AS SHOWN ON THE PLANS. HOUSE LATERALS FROM CHIMNEYS SHALL NOT HAVE AN ANGLE OF LESS THAN 45 DEGREES WITH THE MAIN LINE SEWER.  
 ALL CONCRETE CROSS CUTTERS, CURBS, GUTTERS, PAVEMENT, AND DRIVEWAYS SHALL BE TUNNELED OR JACKED PER LOS ANGELES COUNTY ROAD DEPARTMENT REQUIREMENTS.

**STREET RESURFACING:**  
 STREET RESURFACING METHODS SHALL BE IN ACCORDANCE WITH SECTION 204-1.5.0 OF THE SPECIAL PROVISIONS.  
 FINAL STREET RESURFACING IN ANY LOCATION SHALL BE COMPLETED WITHIN 30 DAYS AFTER COMPLETION OF TRENCH BACKFILL. THE RESURFACED AREA SHALL BE SEALED WITH 8-1 EMULSION AND 1/4 INCH CAULKED ROCK.  
 RESURFACING SCHEDULE: RESURFACE TRENCH WITHIN PAVED AREA \_\_\_\_\_ AS NOTED BELOW.

PAGE NO.	STREET	STATION LIMITS FROM	TO	TYPE OF RESURFACING
5A	MAIE AVE.	17+67	0+98	5" OF TYPE II A.C. OVER 5" OF C.A.B.
5A	FLORENCE AVE.	1+00	1+50	2" OF TYPE II A.C. OVER 3" OF P.C.C. OVER 5" OF C.A.B.
5A	FLORENCE AVE.	1+50	5+79	8" OF P.C.C. OVER 5" OF C.A.B.
5B	FLORENCE AVE.	2+00	2+80	8" OF P.C.C. OVER 5" OF C.A.B.

THE FOLLOWING LISTED REVISED STANDARD PLANS ON FILE IN THE OFFICE OF COUNTY ENGINEER SHALL APPLY IN THE CONSTRUCTION OF THIS PROJECT.  
 LEGEND  
 MINIMUM PUBLIC SAFETY REQUIREMENT . . . . . S-1  
 BRICK MANHOLE . . . . . S-3  
 MANHOLE STEP . . . . . S-17  
 BRIDGING FOR SEWER PIPE . . . . . S-21  
 SPECIAL SUPPORT AND PROTECTION . . . . . S-22  
 BACKFILL INTO EXISTING BRICK OR PRECAST CONC. MANHOLE . . . . . S-19  
 CRADING AND ENCASMENT . . . . . S-23  
 STANDARD WYE OR TEE SUPPORT . . . . . S-24  
 ADJUSTABLE TRIMMER WORKS . . . . . S-25  
 LOCKING MANHOLE FRAME AND COVER . . . . . S-26  
 NON-REINFORCED PRECAST CONCRETE MANHOLE . . . . . S-28  
 TRAP MANHOLE CASTING . . . . . S-29  
 TRAP MANHOLE BASE . . . . . S-10

THE CONTRACTOR SHALL OBTAIN THE FOLLOWING PERMITS PRIOR TO CONSTRUCTION:  
 1. LOS ANGELES COUNTY ROAD DEPARTMENT (PER ITEM 1).  
 2. LOS ANGELES COUNTY ENGINEER, CONSTRUCTION PERMIT (PER EXEMPT).  
 3. PRIOR TO EXECUTION OF THE CONTRACT AGREEMENT BY THE COUNTY, THE CONTRACTOR SHALL OBTAIN AT HIS EXPENSE A PERMIT TO EXCAVATE FROM THE STATE OF CALIFORNIA, DIVISION OF INDUSTRIAL SAFETY.  
 THE UNDERGROUND UTILITY COMPANIES WITHIN THE LIMITS OF THIS PROJECT ARE AS FOLLOWS:  
 (1) SOUTHERN CALIFORNIA WATER CO.  
 (2) SOUTHERN CALIFORNIA GAS CO. (6) L.A. CO. ROAD DEPT.  
 (3) PACIFIC TELEPHONE (7) SOU. CALIF. EDISON CO.  
 (4) MOBILE OIL CO.  
 (5) L.A. CITY WATER

CASH CONTRACT NO. 8597-B

SANITARY SEWERS  
 TO BE CONSTRUCTED IN  
 MAIE AVENUE  
 AND OTHER RIGHTS OF WAY

3 SHEETS, 5 PAGES  
 SCALE: VERT. 1"=4'  
 HORIZ. 1"=40'  
 JULY, 1972

COUNTY OF LOS ANGELES, CALIFORNIA  
 HARVEY T. BRANDT COUNTY ENGINEER

45409

APPROVED: [Signature] 10/27/72  
 ASSISTANT SANITATION DIVISION ENGINEER  
 DESIGNED: [Signature] 10/12/72  
 M.C. C.E. NO. 18270

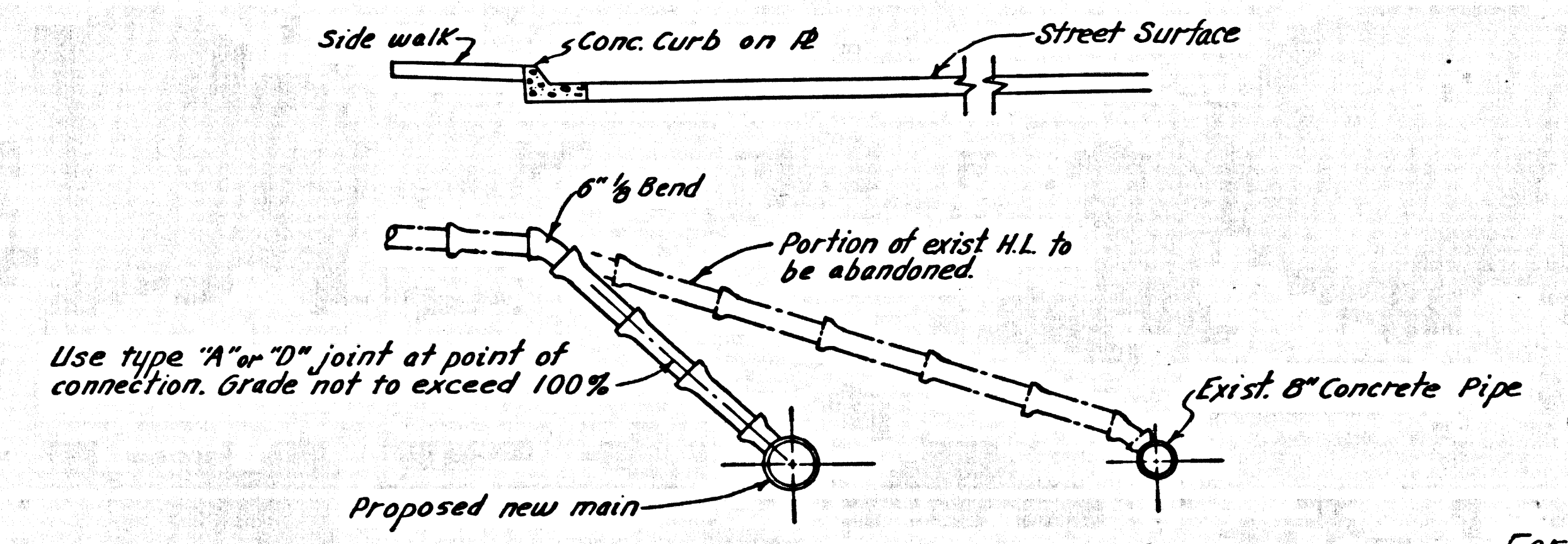
REVISION DATED 10/22/74  
 APPROVED: [Signature] OFFICE ENGINEER  
 JOHN D. PARKHURST  
 CHIEF ENGINEER OF COUNTY  
 SANITATION DISTRICT NO. 1

**NOTES:**  
 WORK SHALL BE CONSTRUCTED ACCORDING TO THE STANDARD SPECIFICATIONS FOR PUBLIC WORKS CONSTRUCTION 1972 EDITION WITH 1974 SUPPLEMENT AND THE COUNTY ENGINEER SPECIAL PROVISIONS FOR THE CONSTRUCTION OF SANITARY SEWERS DATED MARCH 1, 1974 AND SHALL BE PROSECUTED ONLY IN THE PRESENCE OF THE COUNTY ENGINEER.  
 THE CONTRACTOR SHALL NOTIFY THE DESIGN DIVISION BY TELEPHONE (213) 974-1289 AT LEAST 24 HOURS BEFORE STARTING ANY WORK UNDER THIS CONTRACT.  
 GRADES TO WHICH THIS IMPROVEMENT IS TO BE CONSTRUCTED ARE SHOWN ON PLANS AND PROFILES. GRADE POINTS FOR TOP OF CURB, CENTER LINE OF STREET OR CENTER LINE OF ALLEY ARE SHOWN BY CIRCLES OR PROFILES AT ALL POINTS BETWEEN DESIGNATED POINTS THE GRADE SHALL BE ESTABLISHED SO AS TO CONFORM TO A STRAIGHT LINE DRAWN BETWEEN SAID DESIGNATED POINTS. ELEVATIONS ARE IN FEET ABOVE U.S.C. & G.S. SEA LEVEL DATUM OF 1929.  
 THIS DRAWING AND THE DATA HEREON ARE HEREBY MADE A PART OF THE SPECIFICATIONS.

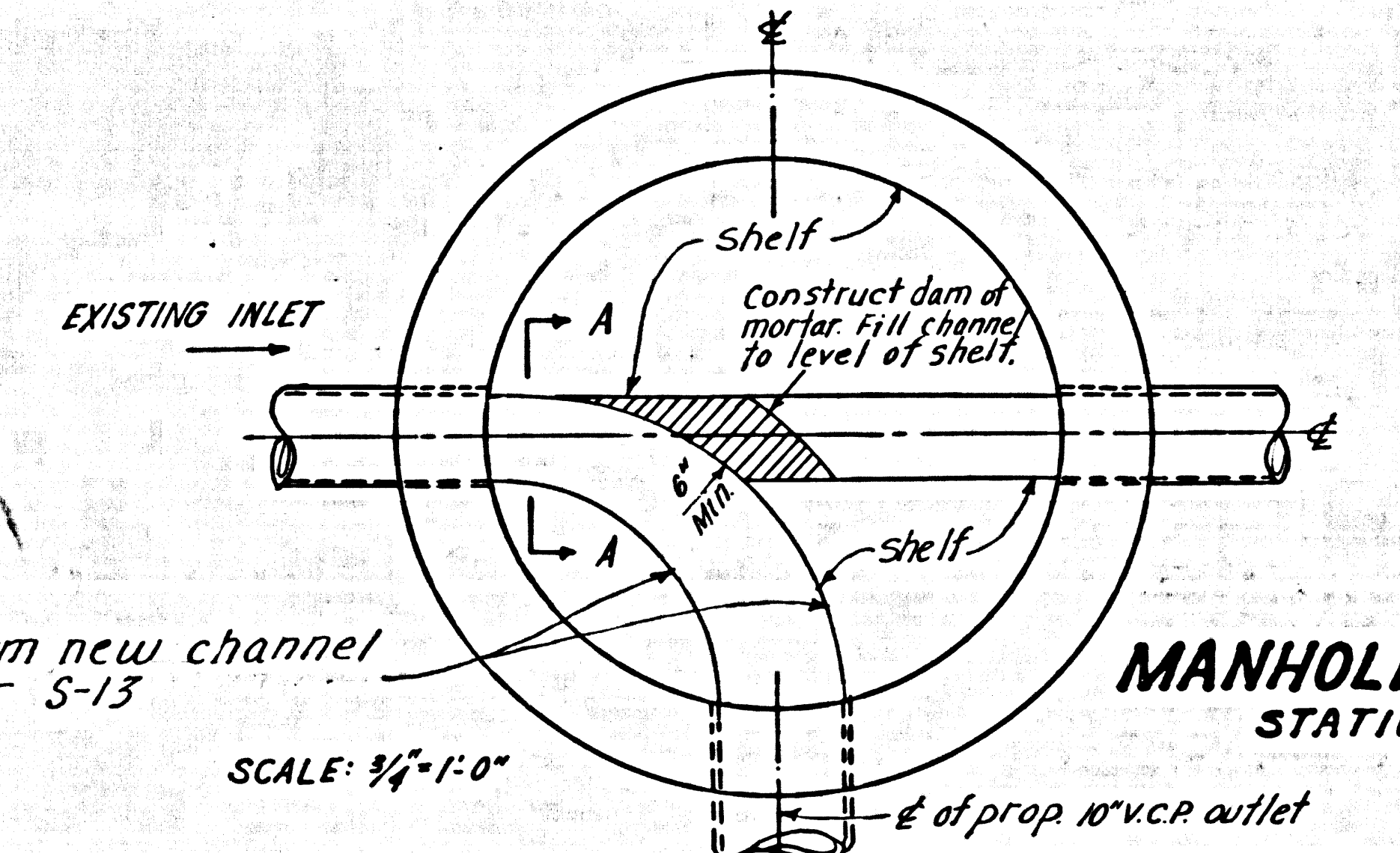
LAYOUT	ESQUIER & TEN	Nov. 71	CHECKED	OBRAOVITCH	DEC. 71
TRACED	ESQUIER & TEN	Nov. 71	MAINTENANCE	G. D. ARNDT	OCT. 72
F. B. 277 & 392.2			A. B.		W. S. 7

FIRESTONE BUILDING DISTRICT NO. 1

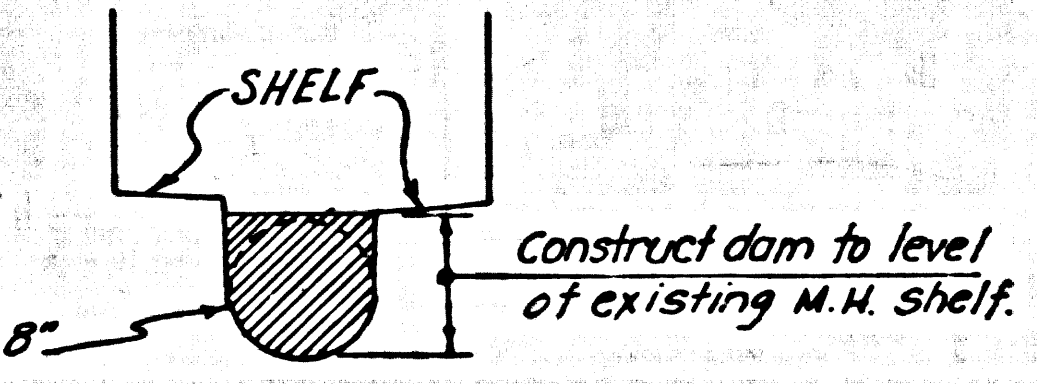
45410



TYPICAL DETAIL  
 HOUSE LATERAL RECONSTRUCTION  
 NO SCALE

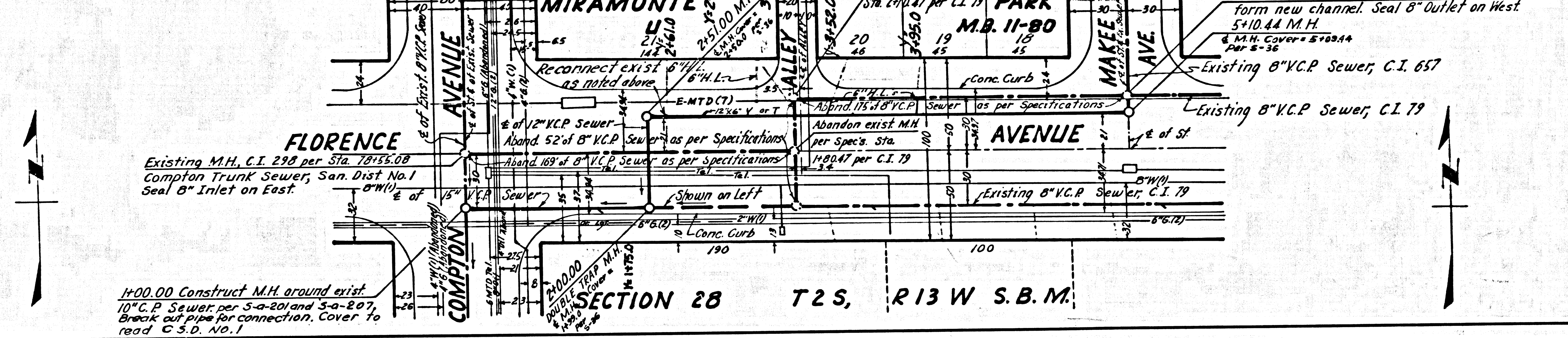
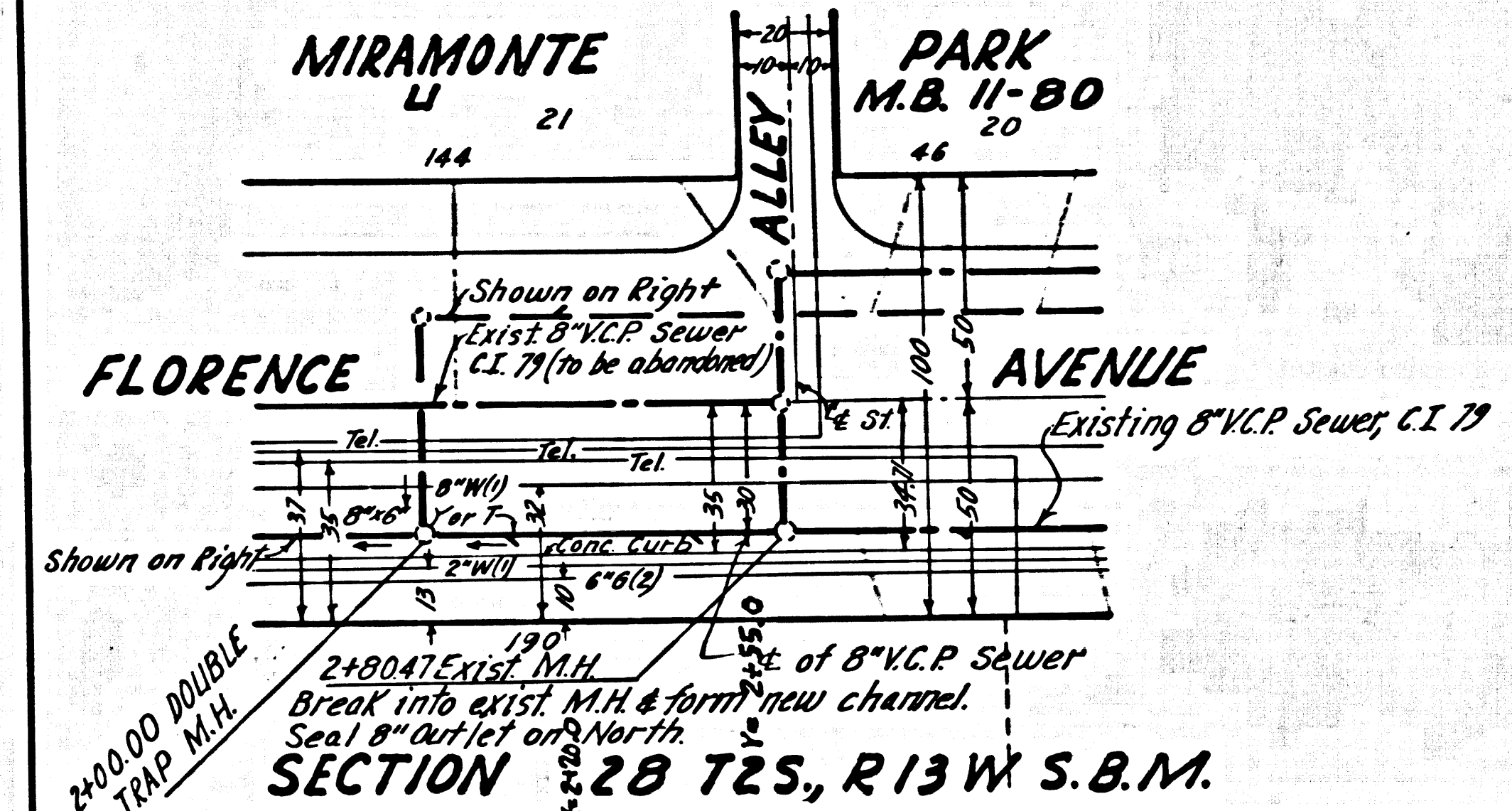
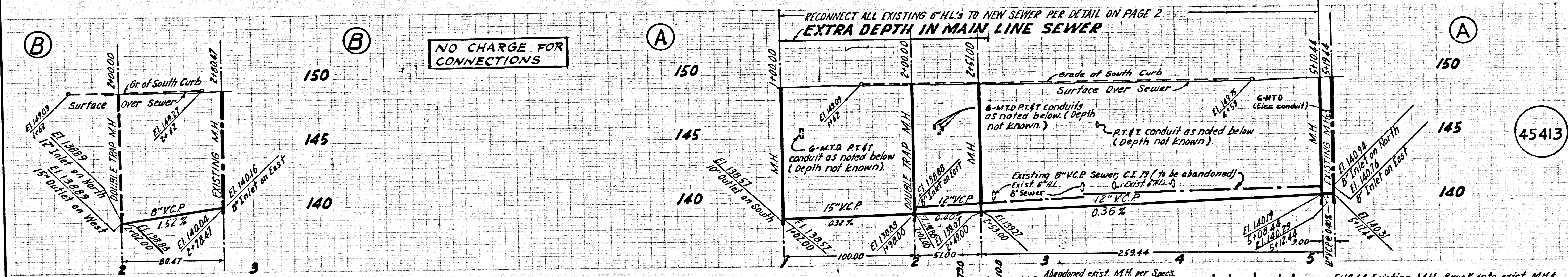


MANHOLE BASE DETAIL  
 STATION 17+57.09  
 SCALE: 3/4"=1'-0"

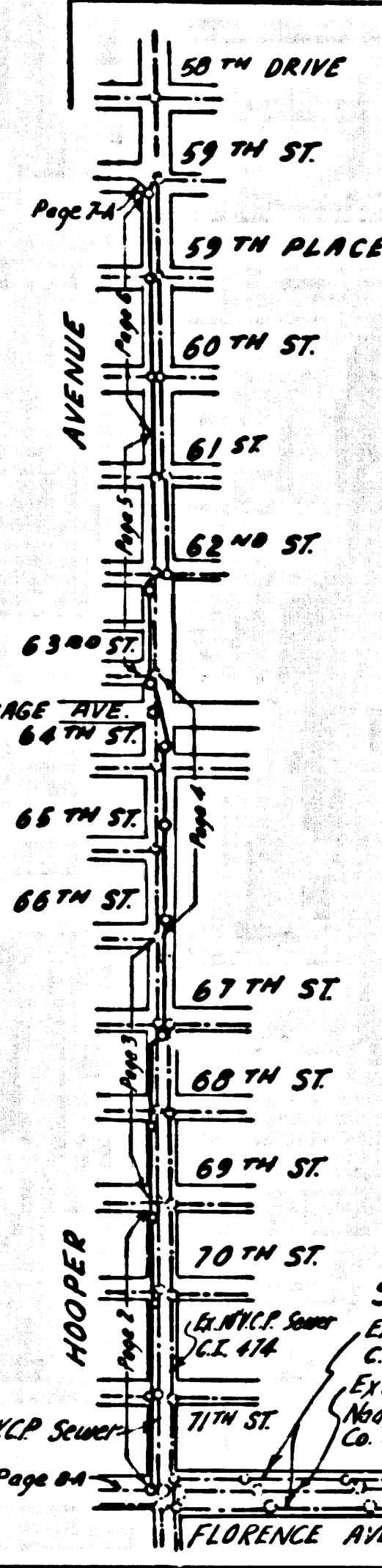


SECTION A-A





B.M. BY 3792, ELEV. 149.046  
 L.A. CO. RD DEPT WATTS (1970) QUAD  
 COMPTON AVE. FLORENCE AVE. N.W. COR.  
 L.A. BENCH NAIL, MIDDLE OF CURB.



NO.	REVISION	APPROVED	DATE
1	CHANGE OF INVERT ELEV. AND H.L. CONNECTIONS	J.H. McLaughlin	5-7-75
2	ADDED ELECT. CONDUIT ON PAGE 8-A	J.H. McLaughlin	7-23-75
3	ADDED 48" STEEL CASING & A.M.N. ON PAGE 4	B.S. Scamler	8-18-75

County Sanitation Districts shall be notified prior to the following so that required inspections can be made (Phone 362-0605, 638-101)

Breaking into existing manhole on District Trunk Sewer.

Acceptance of this project.

No connections for the disposal of industrial wastes shall be made to sewers shown on these drawings without written permission from the Chief Engineer and General Manager of the County Sanitation Districts.

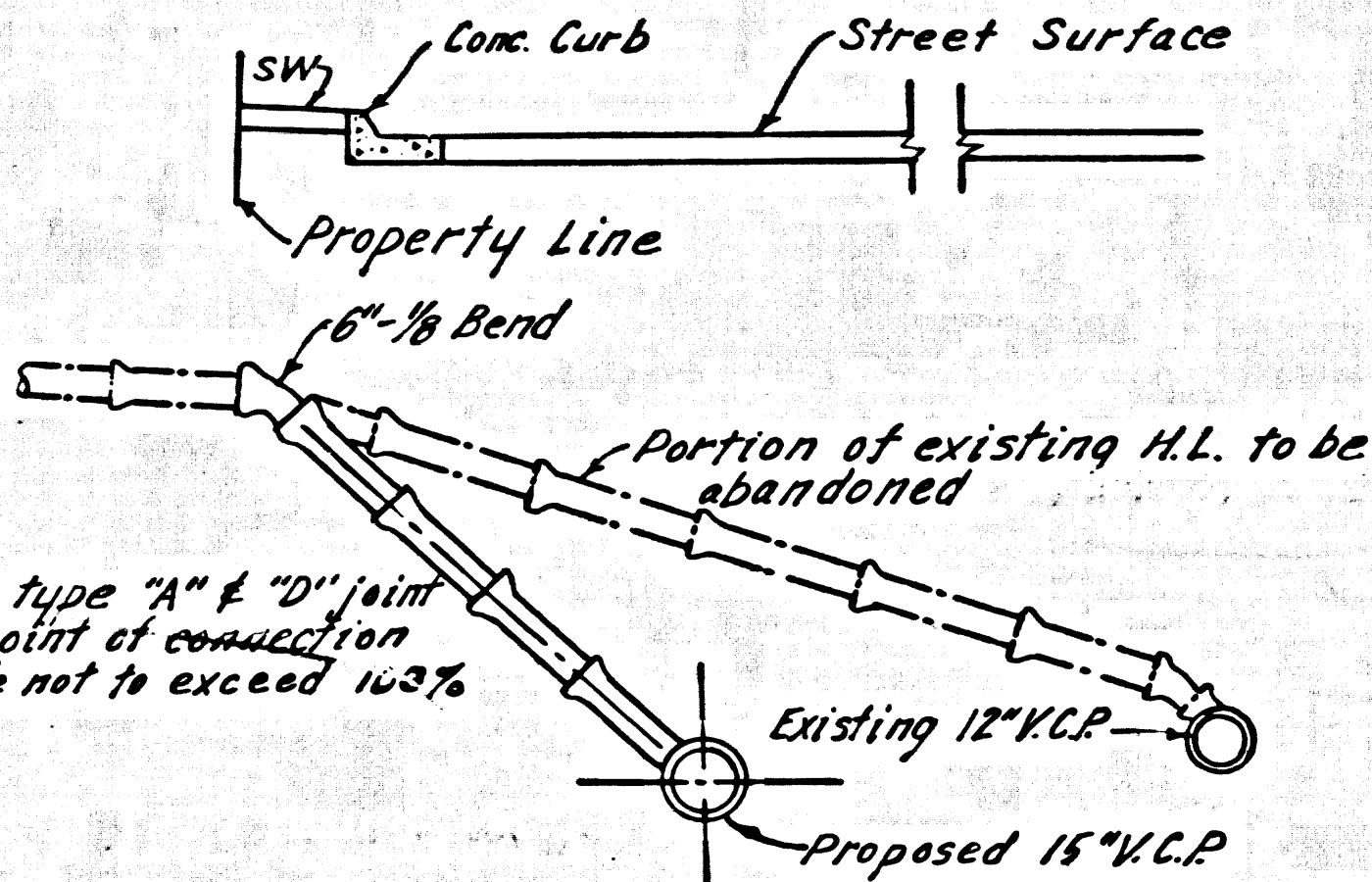
Scale: 1"=60'

INDEX MAP  
 CASH CONTRACT NO. 8597 A  
 FLORENCE-FIRESTONE & WILLOWBROOK

**NOTICE TO CONTRACTOR**  
 THE EXISTENCE AND LOCATION OF ANY UNDERGROUND UTILITY PIPES OR STRUCTURES SHOWN ON THESE PLANS ARE OBTAINED BY A SEARCH OF THE AVAILABLE RECORDS. TO THE BEST OF OUR KNOWLEDGE THERE ARE NO EXISTING UTILITIES EXCEPT AS NOTED ON THIS MAP.  
 THE CONTRACTOR IS REQUIRED TO TAKE PRECAUTIONARY MEASURES TO PROTECT THE UTILITIES LINES SHOWN AND ANY OTHER LINES NOT OF RECORD OR NOT SHOWN ON THIS DRAWING.

"PRIOR TO TRENCH EXCAVATION, THE CONTRACTOR SHALL SUBMIT TO AND OBTAIN APPROVAL FROM THE COUNTY ENGINEER OF A DETAILED PLAN SHOWING THE DESIGN OF SHORING, BRACING, SLOPING OR OTHER PROVISIONS FOR WORKER PROTECTION FROM THE HAZARD OF CAVING GROUND IF SUCH PLAN VARIES FROM THE SHORING SYSTEM STANDARDS ESTABLISHED BY THE CONSTRUCTION SAFETY ORDERS, IT SHALL BE PREPARED BY A REGISTERED CIVIL OR STRUCTURAL ENGINEER."

THE CONTRACTOR SHALL CONTACT ALL UTILITY COMPANIES FOR UTILITY MARKINGS AND COORDINATION PRIOR TO CONSTRUCTION.



TYPICAL DETAIL  
 HOUSE LATERAL RECONSTRUCTION  
 NO SCALE

**GENERAL NOTES:**  
 REFER TO SECTION 2-1.1 OF STANDARD SPECIFICATIONS REGARDING SAFETY ORDERS.  
 ALL MANHOLES SHALL BE EITHER BRICK PER S-2 OR PRECAST CONCRETE PER S-36, EXCEPT AS NOTED.  
 "T" OR "Y" BRANCHES MAY BE USED FOR CONNECTIONS TO MAIN LINE SEWER, EXCEPT AS NOTED.  
 VITRIFIED CLAY PIPE JOINTS SHALL BE TYPE "D", "F", OR "G" PER SECTION 208.3 OF STANDARD SPECIFICATIONS.  
 ALL JOINTS BETWEEN CAST IRON PIPE AND VITRIFIED CLAY PIPE SHALL BE MADE WITH A RUBBER GASKET JOINT TYPE "C" OR "D" (WHICH EVER IS NECESSARY) PER S-208.2 OF STD. SPECS.  
 SEWERS TO BE TESTED FOR LEAKAGE PER SECTION 204-1.6 OF STANDARD SPECIFICATIONS AND SPECIAL PROVISIONS.  
 IF A POWER POLE IS WITHIN THREE FEET OF THE SEWER, THE SEWER SHALL BE ENCASED, PER S-22 CASE II, TWO FEET ON EACH SIDE FROM THE POINT OF INTERFERENCE.  
 ALL PIPE IS STANDARD STRENGTH EXTRA STRENGTH VITRIFIED CLAY PIPE, EXCEPT AS NOTED.  
 NO REVISIONS SHALL BE MADE IN THESE PLANS WITHOUT THE APPROVAL OF THE COUNTY ENGINEER.  
 CONTRACTOR SHALL MAINTAIN SURVEY POINTS AT ALL TIMES DURING CONSTRUCTION OF MAIN LINE SEWERS AND HOUSE LATERAL SEWERS.  
 ALL SEWER PIPES AND APPURTENANCES SHALL BE ARRANGED IN ACCORDANCE WITH SEC. 206-5 OF STANDARD SPECIFICATIONS.  
 ALL HOUSE LATERALS SHALL BE CONSTRUCTED IN A STRAIGHT ALIGNMENT AT RIGHT ANGLES FROM THE MAIN LINE SEWER EXCEPT AS SHOWN ON THE PLANS. HOUSE LATERALS FROM CHIMNEYS SHALL NOT HAVE AN ANGLE OF LESS THAN 45 DEGREES WITH THE MAIN LINE SEWER.  
 ALL CONCRETE CROSS GUTTERS, CURBS, GUTTERS, PAVEMENT, AND DRIVEWAYS SHALL BE TUNNELED OR JACKED PER LOS ANGELES COUNTY ROAD DEPARTMENT REQUIREMENTS.

**STREET RESURFACING:**  
 STREET RESURFACING METHODS SHALL BE IN ACCORDANCE WITH SECTION 304-2.8 OF THE SPECIAL PROVISIONS.  
 FINAL STREET RESURFACING IN ANY LOCATION SHALL BE COMPLETED WITHIN 30 DAYS AFTER COMPLETION OF TRENCH BACKFILL.  
 THE RESURFACED AREA SHALL BE SEALED WITH 85-1 EMULSION AND 1/4 INCH CRUSHED ROCK.  
 RESURFACING SCHEDULE: RESURFACE TRENCH WITHIN PAVED AREA WITH TYPE \_\_\_\_\_ ASPHALTIC CONCRETE \_\_\_\_\_ INCHES IN THICKNESS ON \_\_\_\_\_ INCHES OF AGGREGATE BASE MATERIALS, EXCEPT AS NOTED BELOW.

59th Street west of Hooper Avenue-Three inches of Type II Asphalt Concrete.  
 Hooper Avenue from 59th Street to 68th Street-Six inches of Type II Asphalt Concrete.  
 Hooper Avenue, 68th Street to Florence Avenue-Five inches of Type II Asphalt Concrete over six inches of crushed aggregate base.  
 Florence Avenue at Hooper Avenue-2" A.C. over Nine inches of portland cement concrete over five inches of crushed aggregate base.

- THE FOLLOWING LATEST REVISED STANDARD PLANS ON FILE IN THE OFFICE OF COUNTY ENGINEER SHALL APPLY IN THE CONSTRUCTION OF THIS PROJECT:
- | SECTION | DESCRIPTION                       | SECTION | DESCRIPTION  |
|---------|-----------------------------------|---------|--|
| 5-1     | MINIMUM PUBLIC SAFETY REQUIREMENT | 5-23    | STANDARD AND ENCASMENT                                     |
| 5-2     | MINIMUM PUBLIC SAFETY REQUIREMENT | 5-24    | STANDARD WYE OR TEE SUPPORT                                |
| 5-3     | MINIMUM PUBLIC SAFETY REQUIREMENT | 5-25    | ALLOWABLE TRENCH WIDTHS                                    |
| 5-4     | MINIMUM PUBLIC SAFETY REQUIREMENT | 5-26    | LOADING MANHOLE FRAMES AND COVERS                          |
| 5-5     | MINIMUM PUBLIC SAFETY REQUIREMENT | 5-27    | NON-REINFORCED PRECAST CONCRETE MANHOLE                    |
| 5-6     | MINIMUM PUBLIC SAFETY REQUIREMENT | 5-28    | SPECIAL SUPPORT AND PROTECTION                             |
| 5-7     | MINIMUM PUBLIC SAFETY REQUIREMENT | 5-29    | LINE GAS TIGHT MANHOLE BASE                                |
| 5-8     | MINIMUM PUBLIC SAFETY REQUIREMENT | 5-30    | LINE GAS TIGHT   |
| 5-9     | MINIMUM PUBLIC SAFETY REQUIREMENT | 5-31    | REINFORCED AND EXISTING BRICK OR PRECAST CONCRETE MANHOLES |
| 5-10    | MINIMUM PUBLIC SAFETY REQUIREMENT | 5-32    | CONCRETE CROSS GUTTERS                                     |
1. LOS ANGELES COUNTY ROAD DEPARTMENT (SEE SHEET)  
 2. LOS ANGELES COUNTY ENGINEER, CONSTRUCTION PERMIT (SEE SHEET)  
 3. PRIOR TO EXECUTION OF THE CONTRACT AGREEMENT BY THE COUNTY, THE CONTRACTOR SHALL OBTAIN AT HIS EXPENSE, A PERMIT TO EXCAVATE FROM THE STATE OF CALIFORNIA, DIVISION OF INDUSTRIAL SAFETY.  
 THE UNDERGROUND UTILITY COMPANIES WITHIN THE LIMITS OF THIS PROJECT ARE AS FOLLOWS:  
 (1) Southern California Water Company (2) SOUTHERN CALIFORNIA EDISON COMPANY  
 (3) Southern California Gas Company (4) Pacific Telephone  
 (5) Shell Oil Company (6) American State Water Company (7) SOUTHERN PACIFIC TRANSFER CO., RIGHT OF ENTRY PERMIT.  
 (8) County Road Department

CASH CONTRACT NO. 8597 A

SANITARY SEWERS  
 TO BE CONSTRUCTED IN  
**HOOPER AVENUE**

AND OTHER RIGHTS OF WAY

4 SHEETS, 8 PAGES

SCALE: VERT. 1"=4'  
 HORIZ. 1"=40'

OCTOBER, 1972

COUNTY OF LOS ANGELES, CALIFORNIA  
 HARVEY T. BRANDT COUNTY ENGINEER

APPROVED: *[Signature]* 10/27/72  
 ASSISTANT COUNTY ENGINEER (S.D.B.) (DATE)  
 DESIGNED: *[Signature]* 10/19/72  
 REG. C.E. NO. 18670 (DATE)

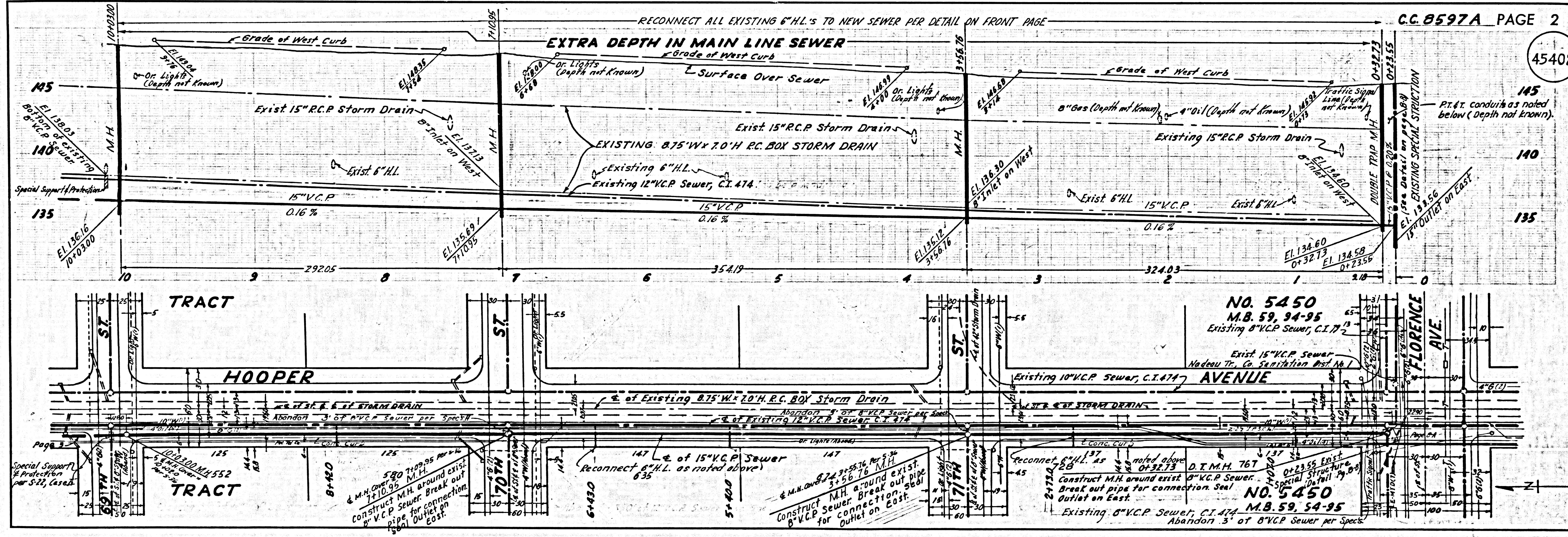
JOHN D. PARKHURST  
 CHIEF ENGINEER OF COUNTY  
 SANITATION DISTRICT NO. 7  
 APPROVED: *[Signature]*  
 OFFICE ENGINEER

NOTES:

WORK SHALL BE CONSTRUCTED ACCORDING TO THE STANDARD SPECIFICATIONS FOR PUBLIC WORKS CONSTRUCTION, 1972 EDITION, 1974 SUPPLEMENTS AND COUNTY ENGINEER SPECIAL PROVISIONS FOR THE CONSTRUCTION OF SANITARY SEWERS DATED MARCH 1, 1978 AND SHALL BE PROSECUTED ONLY IN THE PRESENCE OF THE COUNTY ENGINEER.  
 THE CONTRACTOR SHALL NOTIFY THE DESIGN DIVISION BY TELEPHONE (213) 974-7283 AT LEAST 24 HOURS BEFORE STATING ANY WORK UNDER THIS CONTRACT.  
 GRADES TO WHICH THIS IMPROVEMENT IS TO BE CONSTRUCTED ARE SHOWN ON PLANS AND PROFILES. GRADE POINTS FOR TOP OF CURB, CENTER LINE OF STREET OR CENTER LINE OF ALLEY ARE SHOWN BY CIRCLES ON PROFILES AT ALL POINTS BETWEEN DESIGNATED POINTS THE GRADE SHALL BE ESTABLISHED SO AS TO CONFORM TO A STRAIGHT LINE DRAWN BETWEEN SAID DESIGNATED POINTS. ELEVATIONS ARE IN FEET ABOVE U.S.C. & G.S. SEA LEVEL DATUM OF 1929.  
 THIS DRAWING AND THE DATA HEREON ARE HEREBY MADE A PART OF THE SPECIFICATIONS.

LAYOUT	TEN	FEB -72	CHECKED	OBADAVITCH	MARCH-72
TRACED	TEN	FEB -72	MAINTENANCE	ARNOT	OCT. 72
F. B. 277, 278, 2922			A. B.		W. S. 7

FIRESTONE BUILDING DISTRICT NO. 1



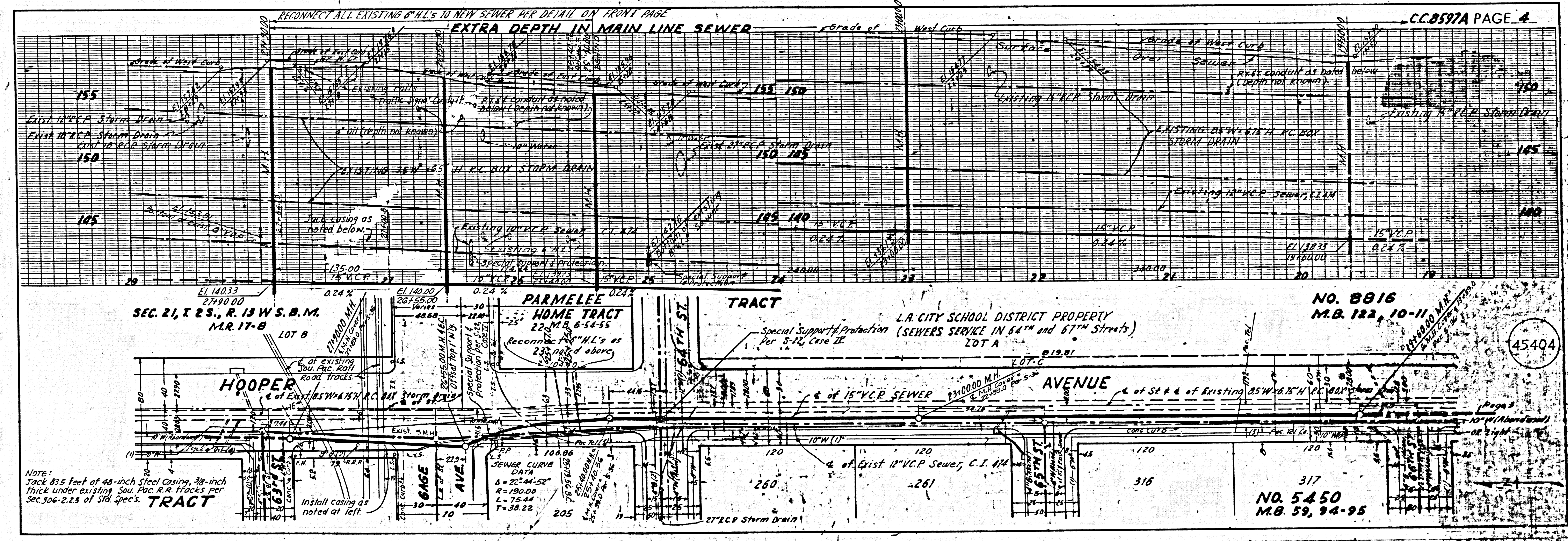
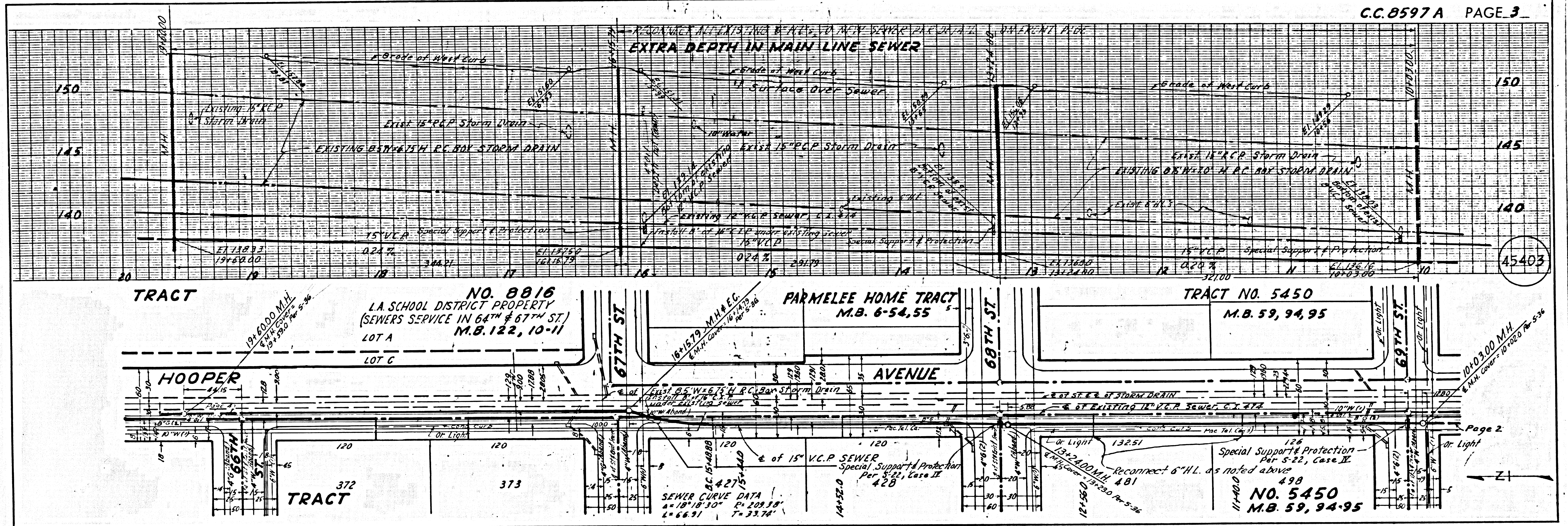
NO. 5450  
 M.B. 59, 94-95  
 Existing 8" V.C.P. Sewer, C.I. 472  
 Existing 15" V.C.P. Sewer  
 Nadeau Tr. Co. Sanitation Dist. No. 7  
 AVENUE

Existing 10" V.C.P. Sewer, C.I. 474

Existing 8" V.C.P. Sewer, C.I. 474

Abandon 3" of 8" V.C.P. Sewer per Specs.

45402



Note:  
 Show 83.5 feet of 48-inch steel casing, 39-inch  
 thick under existing Sou. Pac. R.R. tracks per  
 Sec. 306-2.13 of SFD Specs.

45403

45404

