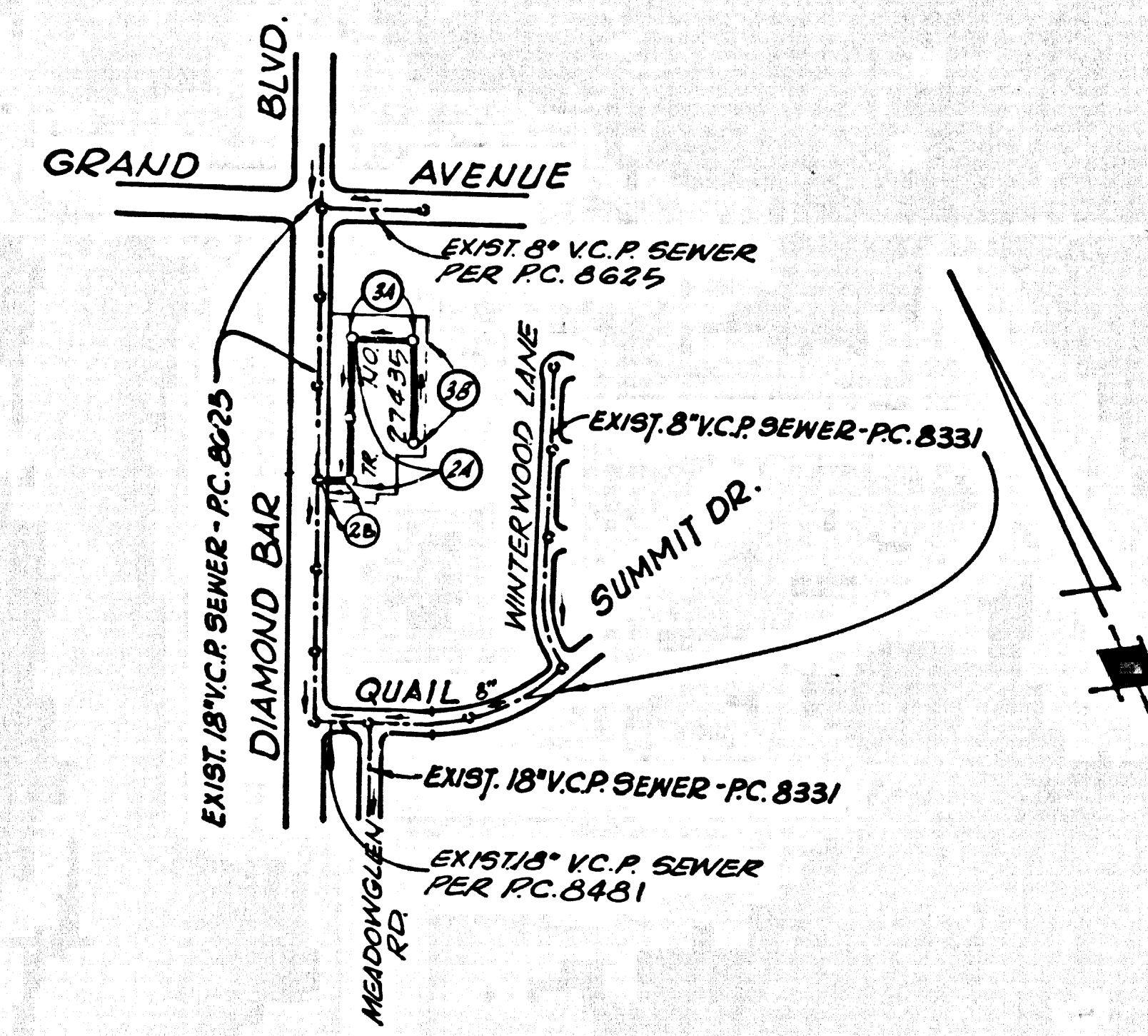


B.M. B.G. 391/2 ELEV. 885.822
 L 8 FT IN EAST END OF C.B. 13 FT. NORTH
 & 56 FT. WEST END OF GRAND AVE. AND
 DIAMOND BAR BLVD. Mkd. "BMC-11"
 OTTERBEIN QUAD. 19 70



INDEX MAP
 TRACT NO. 27435
 P.C. 8624
 SCALE: 1"=600'

THE FOLLOWING LATEST REVISED STANDARD PLANS ON FILE IN THE OFFICE OF THE COUNTY ENGINEER SHALL APPLY IN THE CONSTRUCTION OF THIS PROJECT.

LEGEND

MIN. PUBLIC SAFETY REQUIREMENTS	S-1
BRICK MANHOLE	S-2
NON-REINFORCED PRECAST CONCRETE MANHOLE - LOCKING MANHOLE FRAME AND COVER	S-3
STANDARD MANHOLE STEP	S-3a
BEDDING FOR SEWER PIPE	S-17
CREDLING AND ENCASEMENTS	S-21
WYE OR TEE SUPPORT	S-23
ALLOWABLE TRENCH WIDTH	S-26

County Sanitation Districts shall be notified prior to the following so that required inspection can be made (Phone 337-1025 & 898-1161)

Acceptance of the project.

No connections for the disposal of industrial wastes shall be made to sewers shown on these drawings without written permission from the Chief Engineer and General Manager of the County Sanitation Districts.

ISSUE NO HOUSE CONNECTION PERMITS UNTIL P.C. 8625, P.C. 8331 & P.C. 8431 ARE ACCEPTED BY LOS ANGELES COUNTY.

SAN DIMAS BLDG. DIST. NO. 10

PROFILE ALIGNMENT AND GRADE OF
 SANITARY SEWERS PAGE 1

TRACT NO. 27435

PRIVATE CONTRACT NO. 8624

W.S. 30C3
 2 SHEETS, 3 PAGES

SCALE: VERT. 1"=4' HORIZ. 1"=40'
 JUNE, 1972

PREPARED IN THE OFFICES OF
 E. L. PEARSON AND ASSOCIATES
 1551 W. REDNO BEACH BLVD. GARDENA, CAL.
 BY: *Eudwick Youngdall* REG. C.E. NO. 17532

FOR LEGEND SEE PLAN NO. S-1

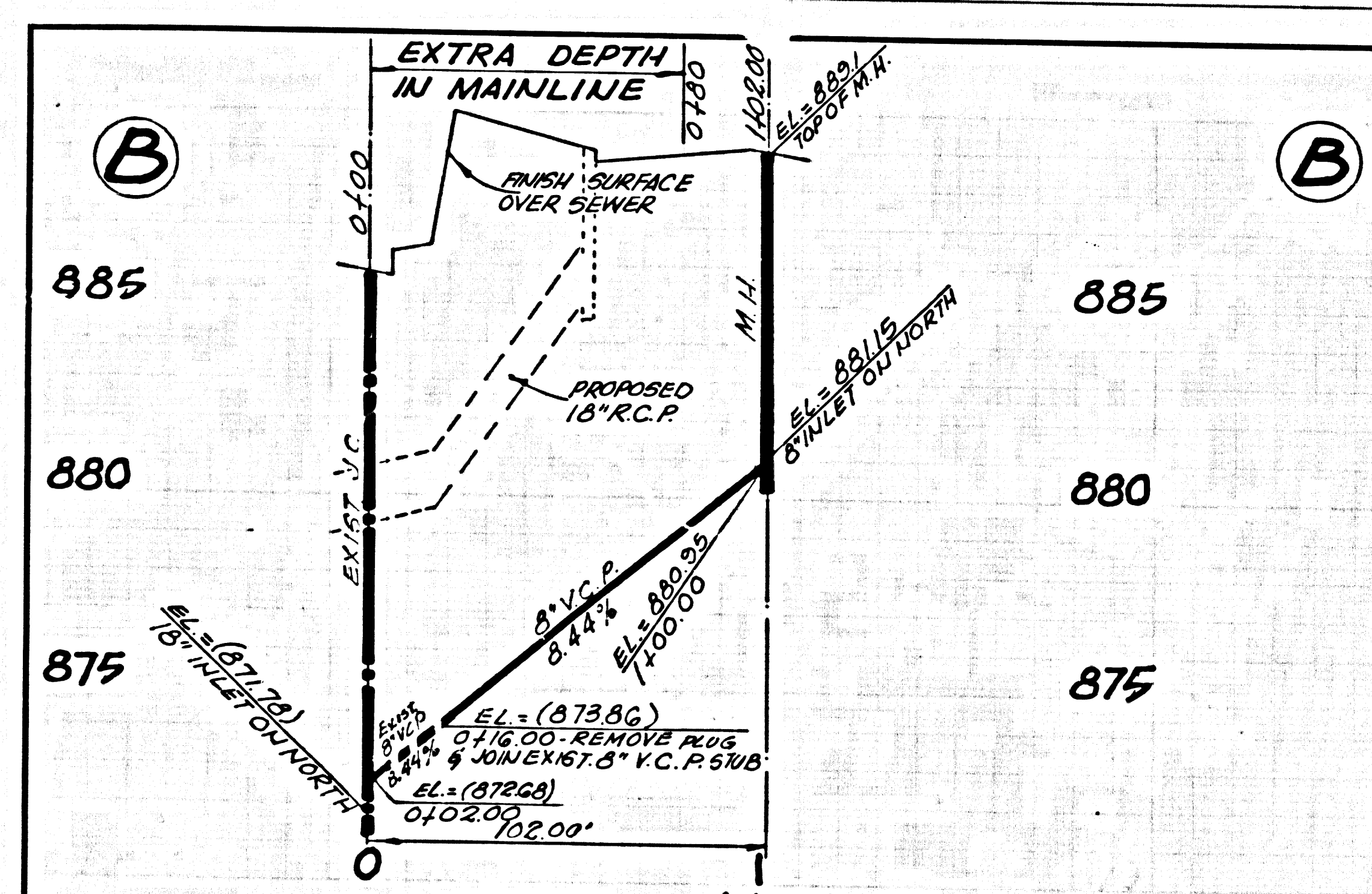
- NOTES - GENERAL AND CONSTRUCTION
- PROVIDE STAKES ON THE PROPERTY LINE OR PROPERTY LINES PRODUCED AT RIGHT ANGLES TO THE SEWER LINE AT THE CENTER LINE OF EACH MANHOLE.
 - NO REPRESENTATIVE OF THE COUNTY ENGINEER WILL SURVEY OR LAY OUT ANY PORTION OF THE WORK.
 - THE PRIVATE ENGINEER SHALL FURNISH THE COUNTY ENGINEER WITH GRADE SHEETS AND STATIONING FOR ALL HOUSE LATERALS AND "T" JOINT BRANCHES AND SHALL PROVIDE STAKES FOR THEM AT THEIR PROPER LOCATIONS WITH STATIONING PLAINLY MARKED. ALL HOUSE LATERALS SHALL BE CONSTRUCTED IN A STRAIGHT ALIGNMENT AT RIGHT ANGLES FROM THE MAIN LINE SEWER EXCEPT AS SHOWN ON THE PLANS. HOUSE LATERALS FROM CHIMNEYS SHALL NOT HAVE AN ANGLE OF LESS THAN 45° WITH THE MAIN LINE SEWER. ANY CHANGE IN ALIGNMENT SHALL BE REQUESTED IN WRITING BY THE PRIVATE ENGINEER.
 - THE PRIVATE ENGINEER SHALL FURNISH THE HOUSE LATERAL DEPTH AT THE PROPERTY LINE BELOW THE TOP OF CURB ELEVATION FOR EACH HOUSE LATERAL ON THE GRADE SHEET.
 - NO REVISIONS SHALL BE MADE IN THESE PLANS WITHOUT THE APPROVAL OF THE COUNTY ENGINEER.
 - THE CONTRACTOR SHALL NOTIFY THE CONSTRUCTION DIVISION BY TELEPHONE, MADISON 4-4742, EXT. 81551, AT LEAST TWENTY-FOUR HOURS BEFORE STARTING ANY WORK UNDER THIS CONTRACT.
 - ALL STRUCTURES SHALL BE EITHER BRICK MANHOLES PER S-3 OR PRECAST CONCRETE MANHOLES PER S-3a EXCEPT AS NOTED.
 - WYE OR TEE BRANCHES MAY BE USED FOR CONNECTIONS TO MAINLINE SEWERS EXCEPT AS NOTED.
 - MANHOLE TOPS IN UNIMPROVED RIGHTS-OF-WAY TO BE SIX INCHES ABOVE FINISHED GRADE.
 - THE TOTAL DEPTH FROM THE TOP OF THE COVER TO THE CENTER OF THE MAINLINE SEWER SHALL BE AS NOTED.
 - IF DURING THE COURSE OF CONSTRUCTION IT IS DETERMINED THAT THERE IS LESS THAN FOUR FEET OF COVER OVER THE TOP OF A MAIN LINE OR HOUSE LATERAL V.C.P. SEWER WHICH IS NOT INDICATED ON THE PLANS, THE PIPE SHALL BE ENCASED PER S-23 CASE II, UNLESS OTHERWISE APPROVED BY THE COUNTY ENGINEER.
 - HOUSE LATERALS TO BE CONSTRUCTED WITH INVERTS AT PROPERTY LINE & FEET BELOW EDGE OF PRIVATE DRIVEWAYS EXCEPT AS NOTED.
 - RESURFACE ALL TRENCHES WITHIN PAVED AREAS TO MEET L.A. COUNTY ROAD DEPT. OR CALIFORNIA STATE HIGHWAY REQUIREMENTS IN ACCORDANCE WITH PERMITS.
 - SEWERS TO BE TESTED FOR LEAKAGE PER SECTION 300-2.3.7 OF STANDARD SPECS AND SPECIAL PROVISIONS.
 - REFER TO SECTION 1-10-1-1 OF THE STANDARD SPECS. REGARDING SAFETY ORDERS.
 - ALL JOINTS BETWEEN CAST IRON PIPE AND VITRIFIED CLAY PIPE SHALL BE MADE WITH A RUBBER BUSHING JOINT, TYPE "C" OR "D" (WITH BUSHING IF NECESSARY) PER STD. SPECS. 209.2.
 - FULL COMPLIANCE WITH SECTION 300-19.5 OF THE SPECIAL PROVISIONS WILL BE REQUIRED FOR BACKFILL IN STREETS. CERTIFICATION OF BACKFILL COMPACTION AND SAID EQUIVALENTS BY A QUALIFIED REGISTERED TESTING LABORATORY SHALL BE PROVIDED BY THE PERMITTEE PRIOR TO THE ISSUANCE OF A CERTIFICATION OF PARTIAL ACCEPTANCE.

COUNTY OF LOS ANGELES, CALIFORNIA
 HARVEY T. BRANDT COUNTY ENGINEER
 J. D. PARKHURST, CHIEF ENGINEER
 APPROVED BY: *B.F. Norling* SAN DIMAS REGIONAL ENGINEER
 APPROVED BY: *[Signature]* OFFICE ENGINEER

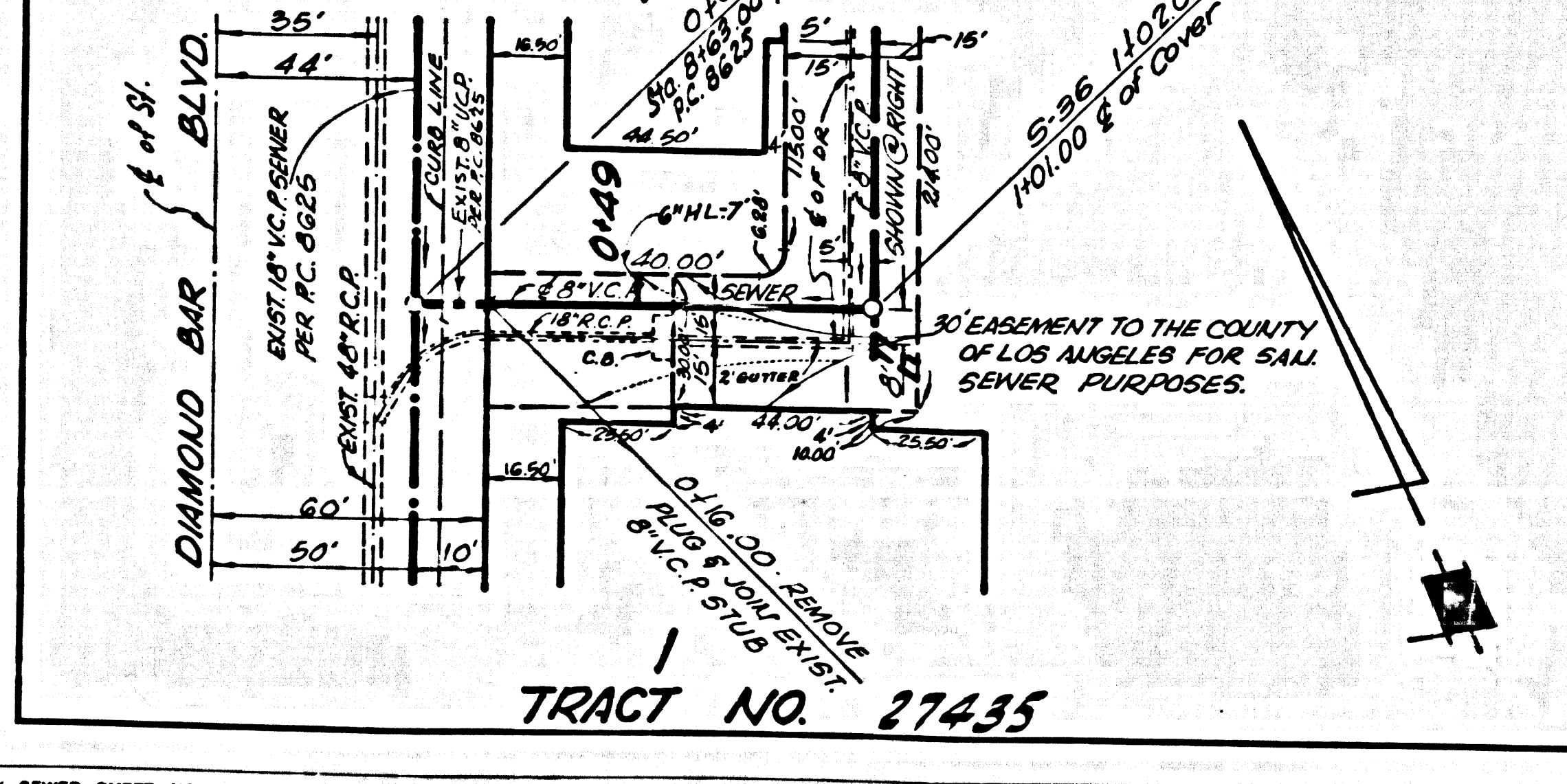
CHECKED BY: *[Signature]* REG. C.E. NO. 3446

NOTICE TO CONTRACTOR
 The existence and location of any underground utility pipes or structures shown on these plans are obtained by a search of the available records to the best of my knowledge there are no existing utilities except as shown on these plans. The contractor is required to take due precautionary measures to protect the utility lines shown and any other lines not of record or not shown on these plans.
Eudwick Youngdall REG. C.E. NO. 17532

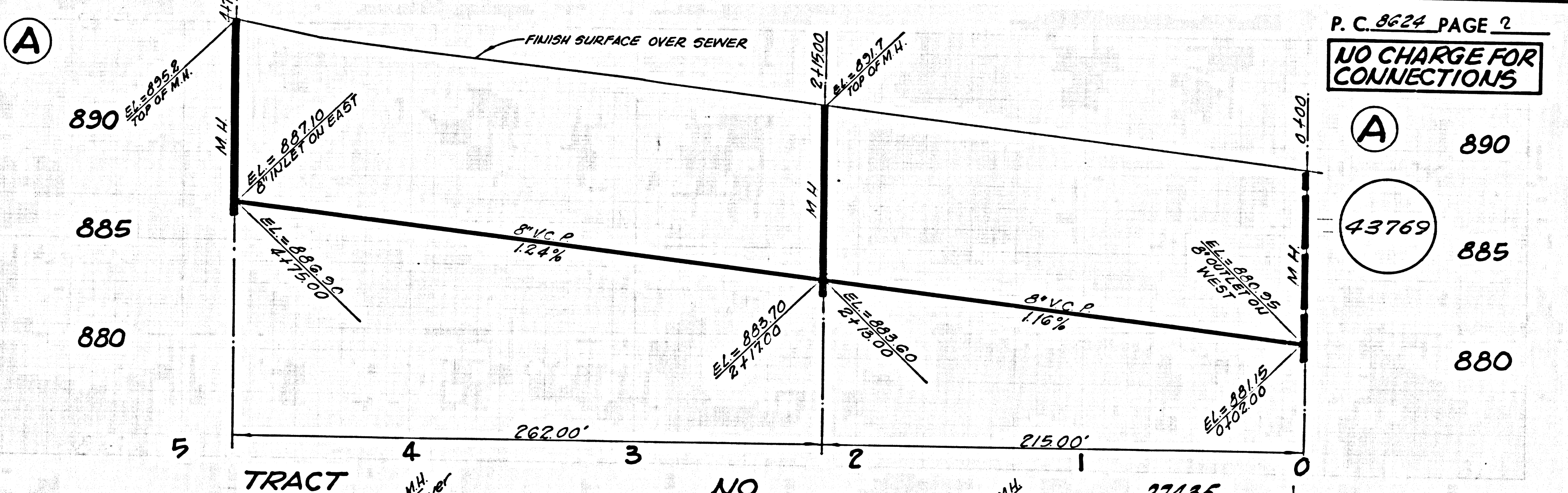
REVISION NO. 1
 1. ELIMINATE MAIN LINE SEWER - PAGE 1
 2. ELIMINATE 12" MAINLINE SEWER FROM STA. 2+02 TO 2+14 - PAGE 3B
 3. ELIMINATE 8" V.C.P. MAINLINE SEWER, 6" MANHOLE AND 8" MAINLINE SEWER AT STA. 0+74 - PAGE 3A
 BY: *Eudwick Youngdall*
 APPROVED: *[Signature]* DATE: 3/24/72
 COUNTY ENGINEER REG. 19156



TRACT NO. 27435

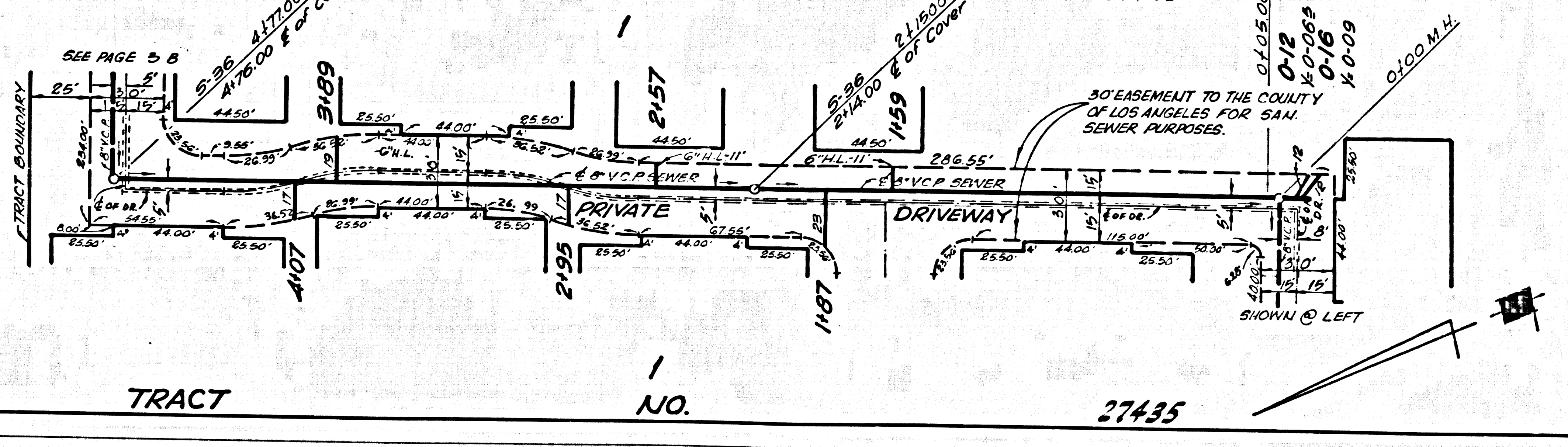


TRACT NO. 27435

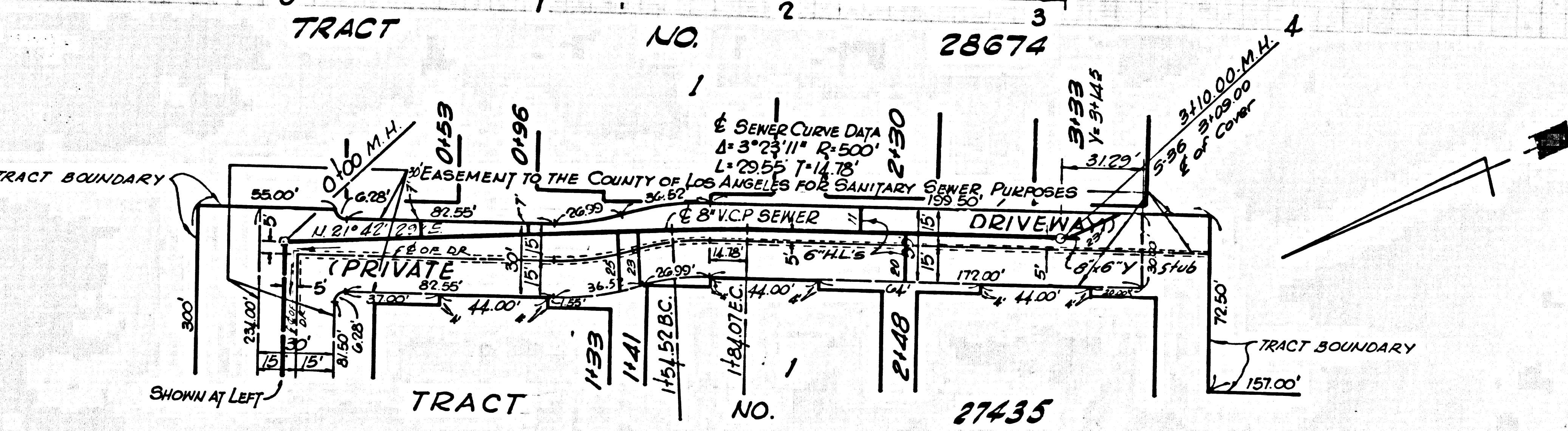
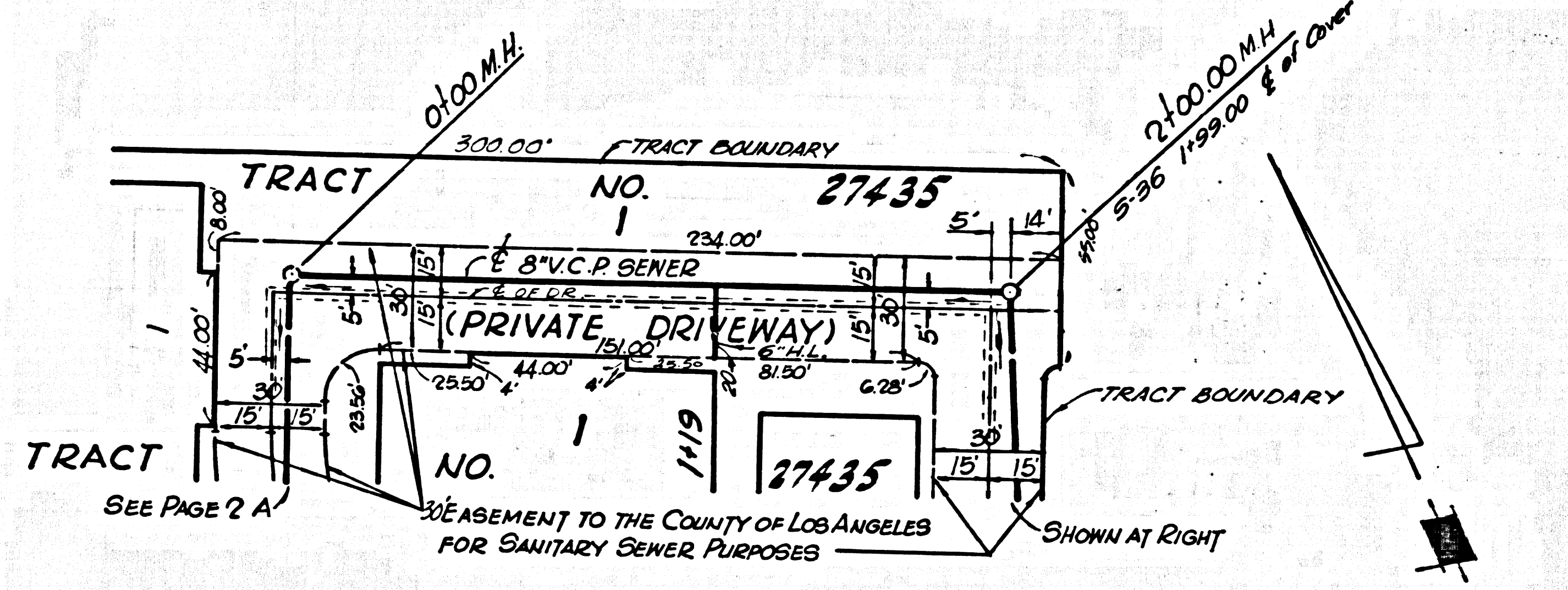
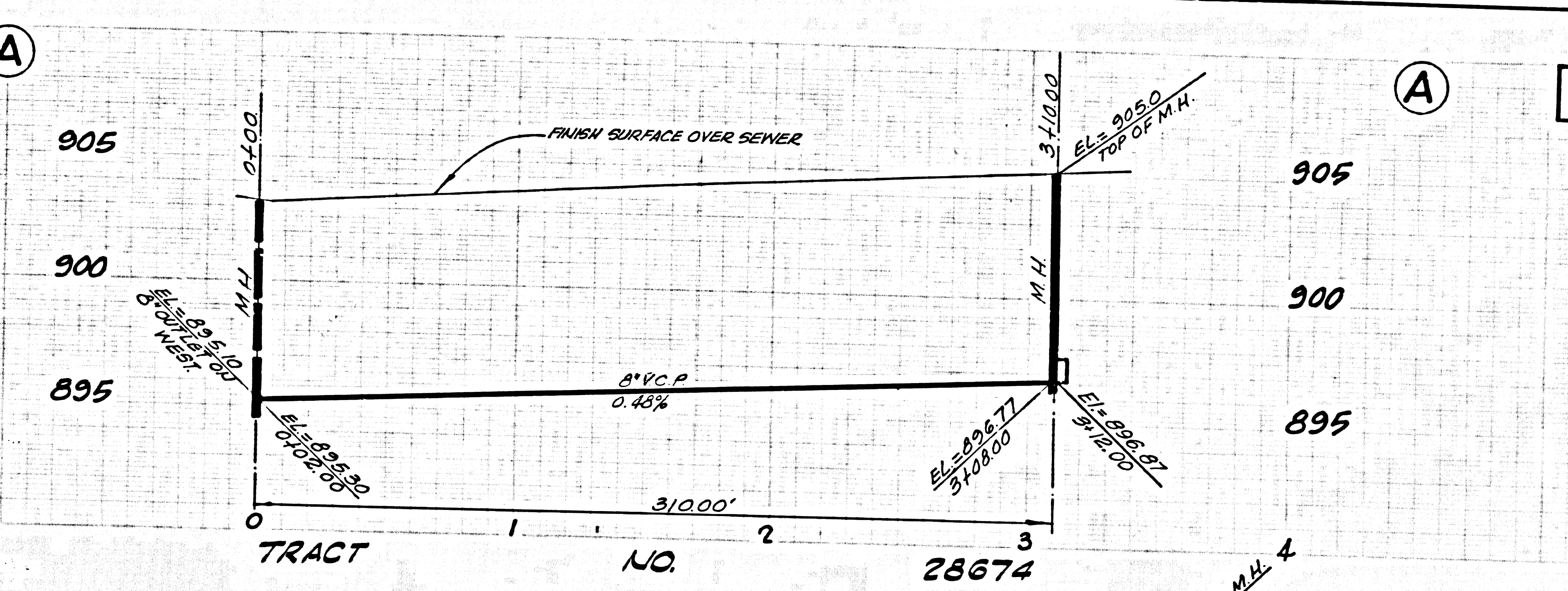
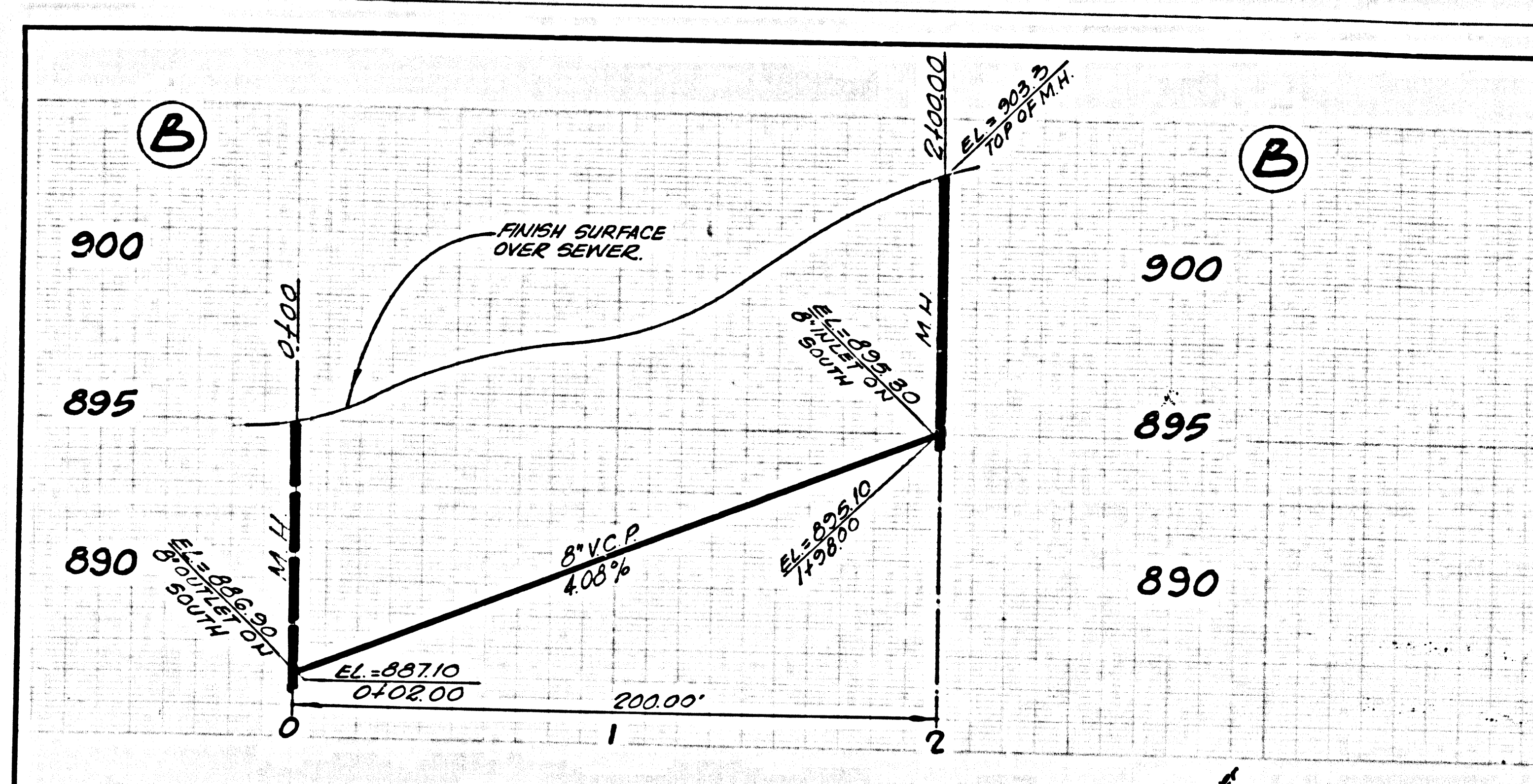


P.C. 8624 PAGE 2
 NO CHARGE FOR CONNECTIONS

43769



TRACT NO. 27435



PC 2624 PAGE 3
NO CHARGE FOR CONNECTIONS

43770

PAGE