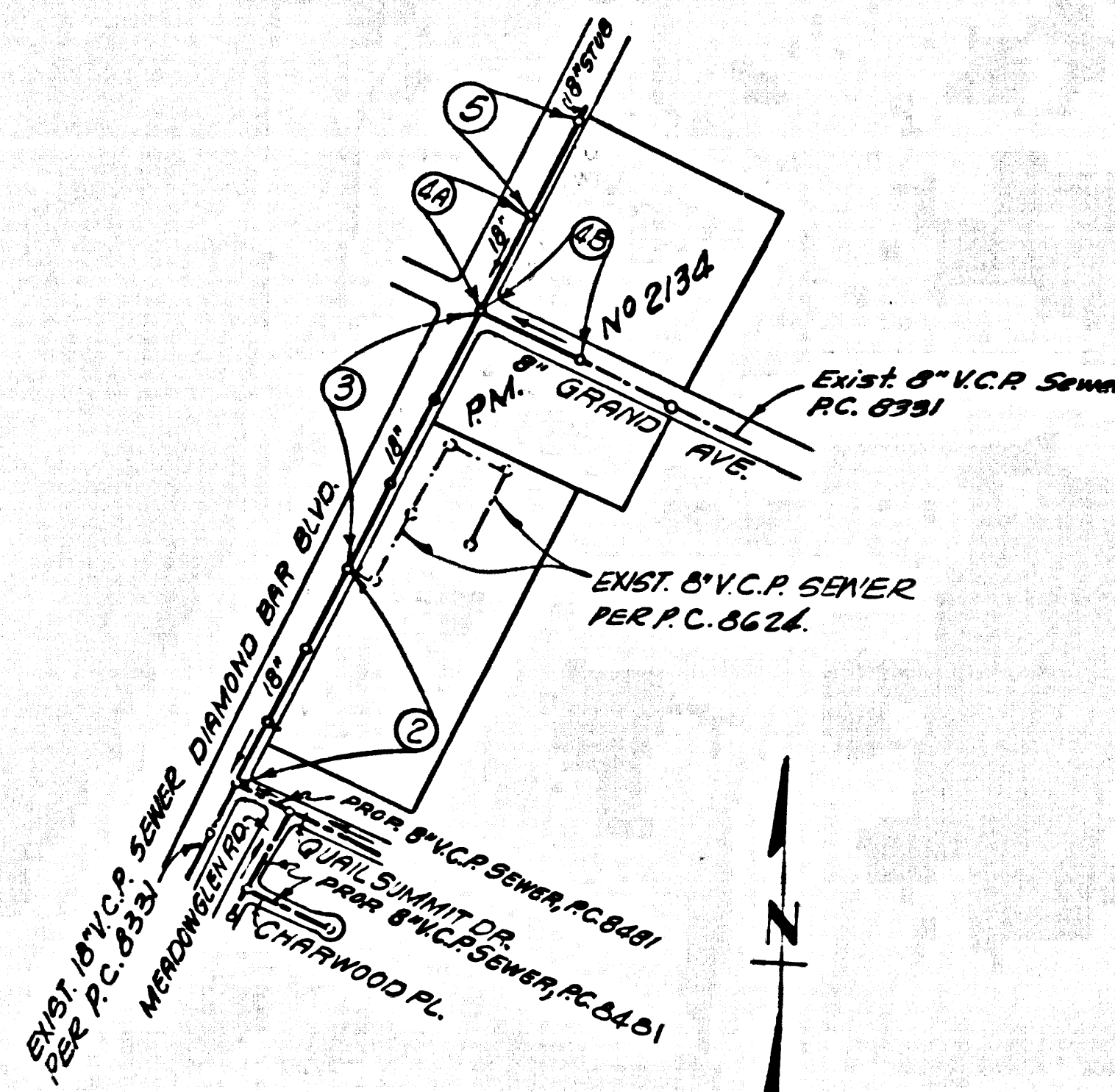


B.M. 3912 ELEV 895.862  
 L. 57.11 IN EAST END C.B. 43 FT. N.E.  
 36 FT. W. E. INT. GRAND AVE. E.  
 DIAMOND BAR BLVD. MHD. B.M. C-11  
 OTTERBEIN QUAD. 19 70



INDEX MAP  
 P.M. NO. 2134  
 P.C. 8625  
 SCALE: 1"=600'

REVISION NO. 1  
 REVISED SEWER GRADE ON DIAMOND BAR BLVD.  
 BETWEEN STATIONS 0+50.00 & 3+45.00 ON PAGE 2  
 BY: *Richard D. Judd*  
 APPROVED: *John E. ...* DATE 12/1/71  
 OFFICE OF THE COUNTY ENGINEER P.C. 8625

ISSUE NO HOUSE CONNECTION PERMITS  
 UNTIL P.C. 8631 IS APPROVED BY THE  
 LOS ANGELES COUNTY.

DOUBLE SCALE  
 SAN DIMAS BLDG. DIST. NO. 10

PROFILE ALIGNMENT AND GRADE OF  
 SANITARY SEWERS PAGE 1  
 TO BE CONSTRUCTED IN  
 P.M. NO. 2134

PRIVATE CONTRACT NO. 8625

W.S. 39-C3  
 3 SHEETS, 5 PAGES  
 SCALE: VERT. 1"=4'  
 HORIZ. 1"=40'  
 MAY, 1971 43668

E.L. PEARSON & ASSOCIATES  
 1551 W. REDONDO BEACH BLVD. GARDENA  
 BY: *Robert D. Judd*  
 REG. C. E. NO. 17062

FOR LEGEND SEE PLAN NO. S-1

- THE FOLLOWING LATEST REVISED STANDARD PLANS ON FILE IN THE OFFICE OF THE COUNTY ENGINEER SHALL APPLY IN THE CONSTRUCTION OF THIS PROJECT:
- LEGEND 5-1
  - MIN. PUBLIC SAFETY REQUIREMENTS 5-2
  - BRICK MANHOLE 5-3
  - NON-REINFORCED PRECAST CONCRETE MANHOLE 5-36
  - LOCKING MANHOLE FRAME & COVER 5-35
  - STANDARD MANHOLE STEPS 5-17
  - BEDDING FOR SEWER PIPE 5-21
  - LEADLINE ENCASUREMENT 5-23
  - WYE OR TEE SUPPORT 5-26
  - ALLOWABLE TRENCH WIDTH 5-26
  - REINFORCED PRECAST CONCRETE MANHOLE CHIMNEY PIPE AND BASE 5-27

- NOTES: GENERAL AND CONSTRUCTION
1. PROVIDE STAKES ON THE PROPERTY LINE OR PROPERTY LINES PRODUCED AT RIGHT ANGLES TO THE SEWER LINE AT THE CENTER LINE OF EACH MANHOLE.
  2. NO REPRESENTATIVE OF THE COUNTY ENGINEER WILL SURVEY OR LAY OUT ANY PORTION OF THE WORK.
  3. THE PRIVATE ENGINEER SHALL FURNISH THE COUNTY ENGINEER WITH GRADE SHEETS AND STATIONING FOR ALL HOUSE LATERALS AND "WYE" BRANCHES AND SHALL PROVIDE STAKES FOR THEM AT THEIR PROPER LOCATIONS WITH STATIONING PLAINLY MARKED. ALL HOUSE LATERALS SHALL BE CONSTRUCTED IN A STRAIGHT ALIGNMENT AT RIGHT ANGLES FROM THE MAIN LINE SEWER EXCEPT AS SHOWN ON THE PLANS. HOUSE LATERALS FROM CHIMNEYS SHALL NOT HAVE AN ANGLE OF LESS THAN 45° WITH THE MAIN LINE SEWER. ANY CHANGE IN ALIGNMENT SHALL BE REQUESTED IN WRITING BY THE PRIVATE ENGINEER.
  4. THE PRIVATE ENGINEER SHALL FURNISH THE HOUSE LATERAL DEPTH AT THE PROPERTY LINE BELOW THE TOP OF CURB ELEVATION FOR EACH HOUSE LATERAL ON THE GRADE SHEET.
  5. NO REVISIONS SHALL BE MADE IN THESE PLANS WITHOUT THE APPROVAL OF THE COUNTY ENGINEER.
  6. THE CONTRACTOR SHALL NOTIFY THE CONSTRUCTION DIVISION BY TELEPHONE, MADISON 9-472, EXT. 81551, AT LEAST TWENTY-FOUR HOURS BEFORE STARTING ANY WORK UNDER THIS CONTRACT.
  7. ALL STRUCTURES SHALL BE EITHER BRICK MANHOLES PER S-3 OR PRECAST CONCRETE MANHOLES PER S-36 EXCEPT AS NOTED.
  8. WYE OR TEE BRANCHES MAY BE USED FOR CONNECTIONS TO MAIN LINE SEWERS EXCEPT AS NOTED.
  9. MANHOLE TOPS IN UNIMPROVED RIGHTS-OF-WAY TO BE SIX INCHES ABOVE FINISHED GRADE.
  10. THE EXTRA STRENGTH PIPE SHALL BE STANDARD DEPTH EXCEPT AS NOTED.
  11. VITRIFIED CLAY PIPE JOINTS SHALL BE TYPE "B", "P", OR "Q" PER STD. SPEC. 248-B.
  12. IF A POWER POLE IS WITHIN THREE FEET OF THE SEWER, THE SEWER SHALL BE ENCASED, PER S-23, ONE FEET TWO FEET ON EACH SIDE FROM THE POINT OF INTERFERENCE.
  13. IF DURING THE COURSE OF CONSTRUCTION IT IS DETERMINED THAT THERE IS LESS THAN FOUR FEET OF COVER OVER THE TOP OF A MAIN LINE OR HOUSE LATERAL V.C.P. SEWER WHICH IS NOT INDICATED ON THE PLANS, THE PIPE SHALL BE ENCASED PER S-23, UNLESS OTHERWISE APPROVED BY THE COUNTY ENGINEER.
  14. HOUSE LATERALS TO BE CONSTRUCTED WITH INVERTS AT PROPERTY LINE 6 FEET BELOW CURB GRADE EXCEPT AS NOTED.
  15. RESURFACE ALL TRENCHES WITHIN PAVED AREAS TO MEET L.A. COUNTY ROAD DEPT. OR CALIFORNIA STATE HIGHWAY REQUIREMENTS IN ACCORDANCE WITH PERMITS.
  16. SEWERS TO BE TESTED FOR LEAKAGE PER SEC. 306-3.2, STD. SPEC. AND SPECIAL PROVISIONS.
  17. REFER TO SECTION 306-3.1 OF THE STD. SPEC. REGARDING INVERT ELEVATIONS.
  18. ALL JOINTS BETWEEN CURB FROM FACE AND WITHIN VITRIFIED CLAY PIPE SHALL BE MADE WITH A RUBBER SLAVE JOINT TYPE "A" OR "B" WITH BRASS OR INDEPENDENT PER STD. SPEC. 248-B.
  19. FULL COMPLIANCE WITH SECTION 306-3.3 OF THE SPECIAL PROVISIONS WILL BE REQUIRED FOR BACKFILL IN STREETS. CERTIFICATION OF BACKFILL CONSTRUCTION AND SHOWN EQUIVALENTS BY A QUALIFIED REGISTERED TESTING LABORATORY SHALL BE PROVIDED BY THE CONTRACTOR PRIOR TO THE ISSUANCE OF A CERTIFICATE OF PARTIAL ACCEPTANCE.

County Sanitation Districts shall be notified prior to the following so that required inspection can be made (Phone 537-1023 or 658-1181)

Accompaniment of the project:  
 No ground-water use for disposal of industrial wastes shall be made to sewers shown on these drawings without written permission from the Chief Engineer and General Manager of the County Sanitation Districts.

NOTICE TO CONTRACTOR

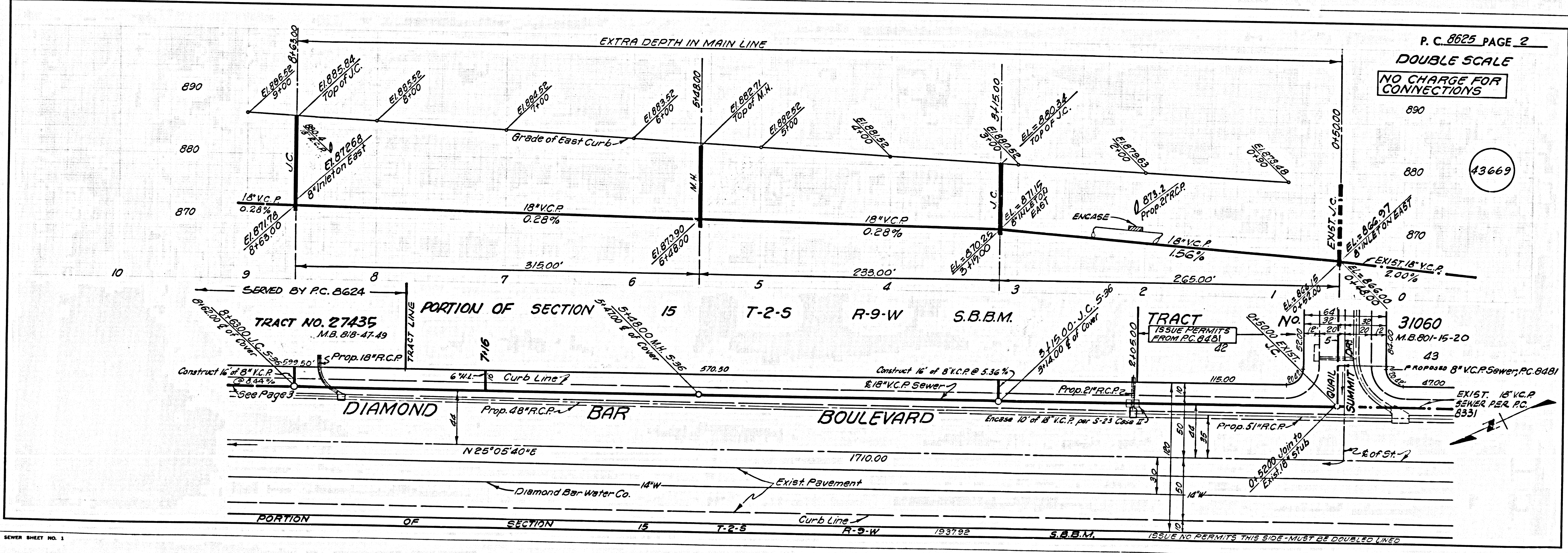
The existence and location of any underground utility pipes or structures shown on these plans were obtained by a search of the available records to the best of my knowledge. There are no existing utilities except as shown on these plans. The contractor is required to take due precautionary measures to protect the utility lines shown and any other lines not of record or not shown on these plans.  
*Robert D. Judd*  
 R.C.E. 17062

COLLECT CHARGES AS INDICATED

COUNTY OF LOS ANGELES, CALIFORNIA  
 HARVEY T. BRANDT COUNTY ENGINEER  
 J. D. PARKHURST, CHIEF ENGINEER  
 APPROVED BY: *B.F. ...*  
 SAN DIMAS REGIONAL ENGINEER

CHECKED BY: *Thomas C. ...*  
 REG. C.E. NO. 19124  
 24 May 71

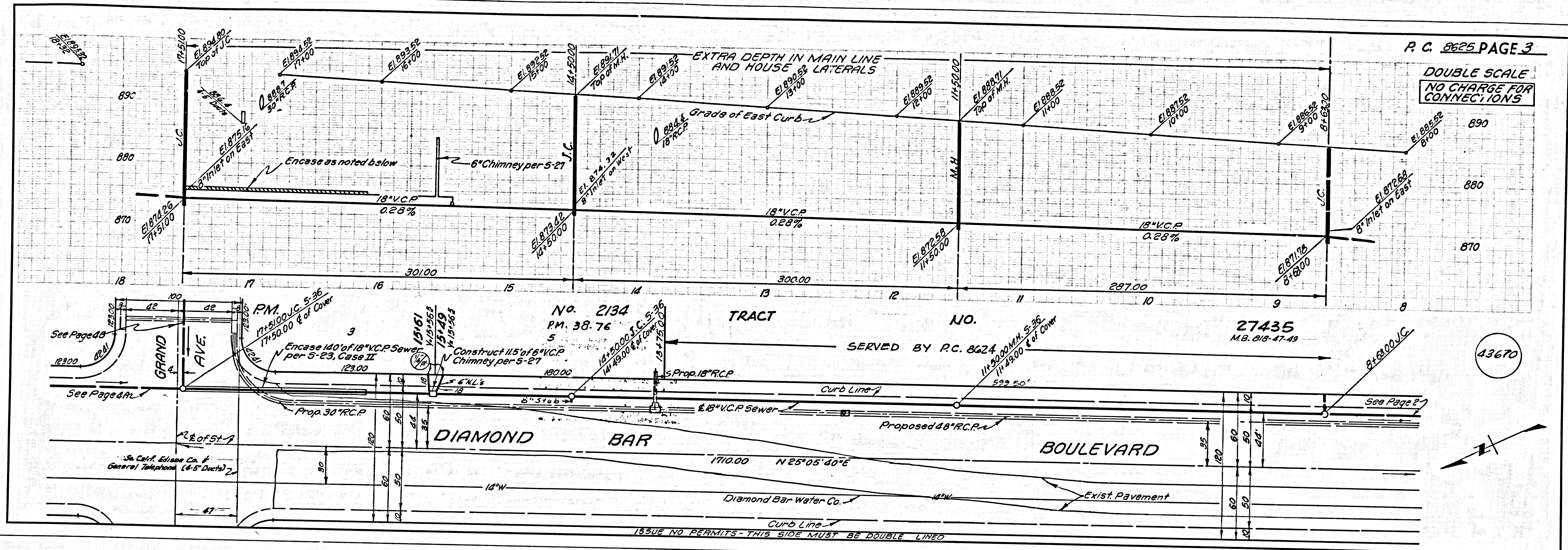
J.N. 0250.05



P.C. 8625 PAGE 2

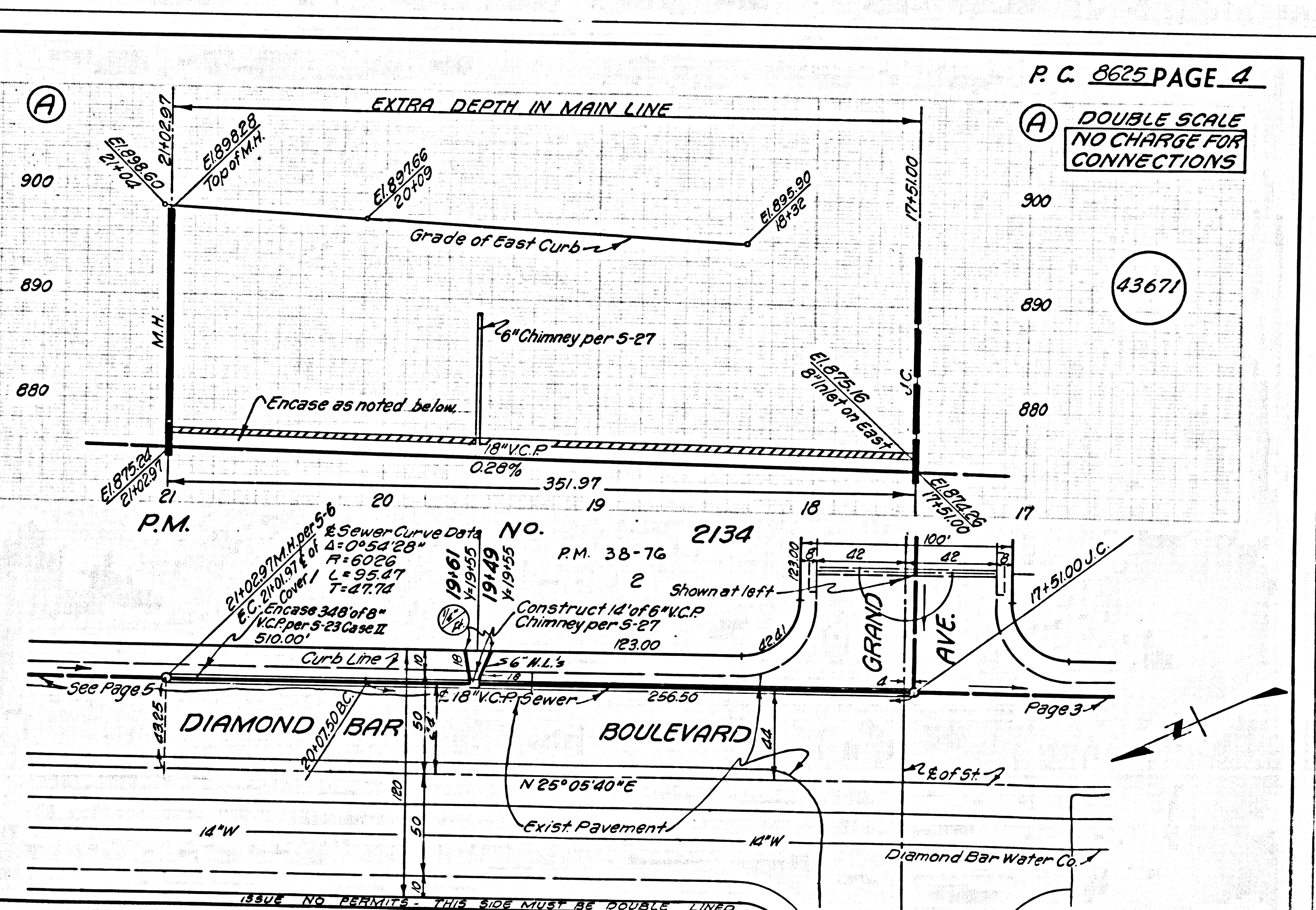
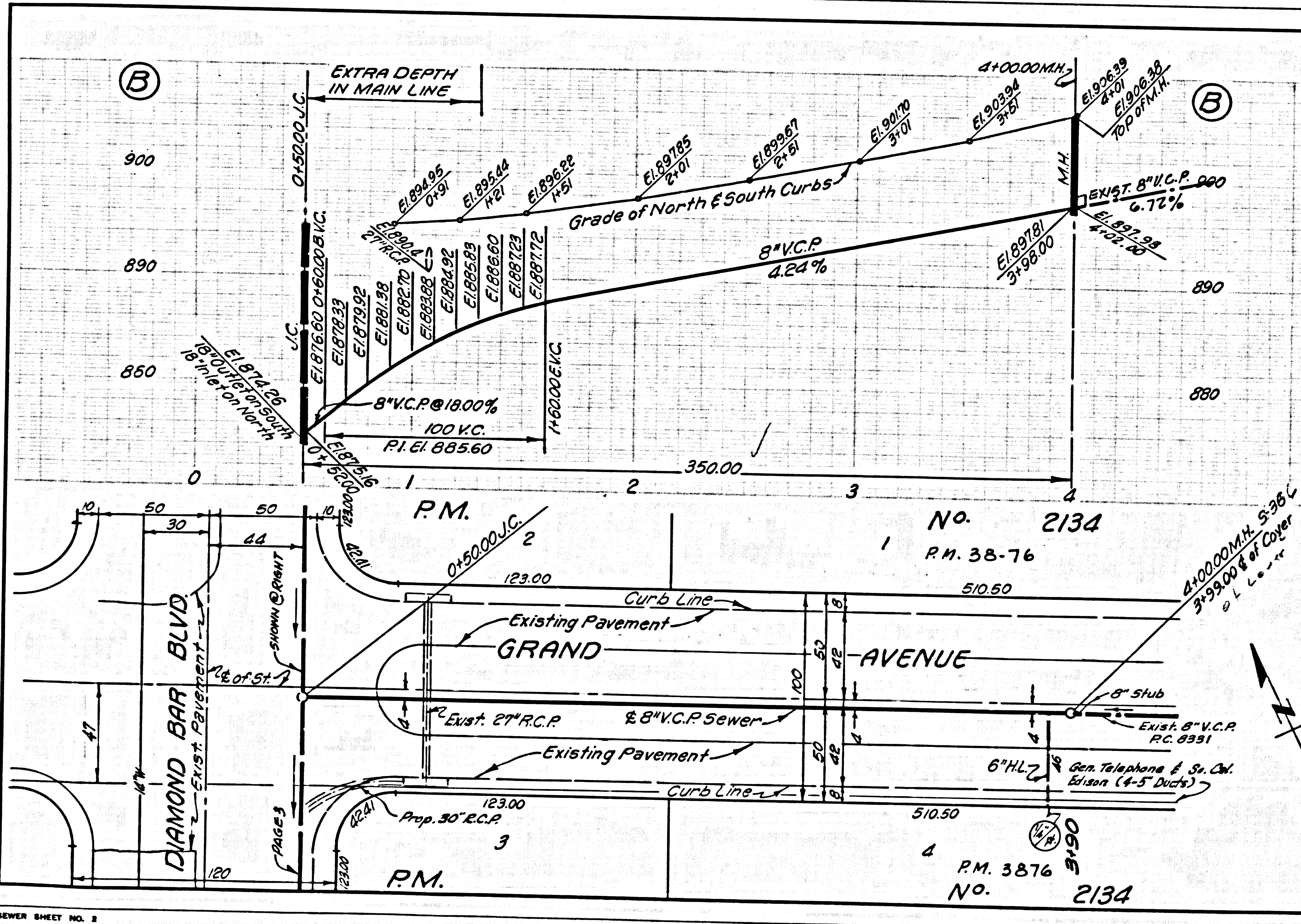
DOUBLE SCALE  
 NO CHARGE FOR CONNECTIONS

43669



P. C. 8625 PAGE 3  
 DOUBLE SCALE  
 NO CHARGE FOR CONNECTIONS

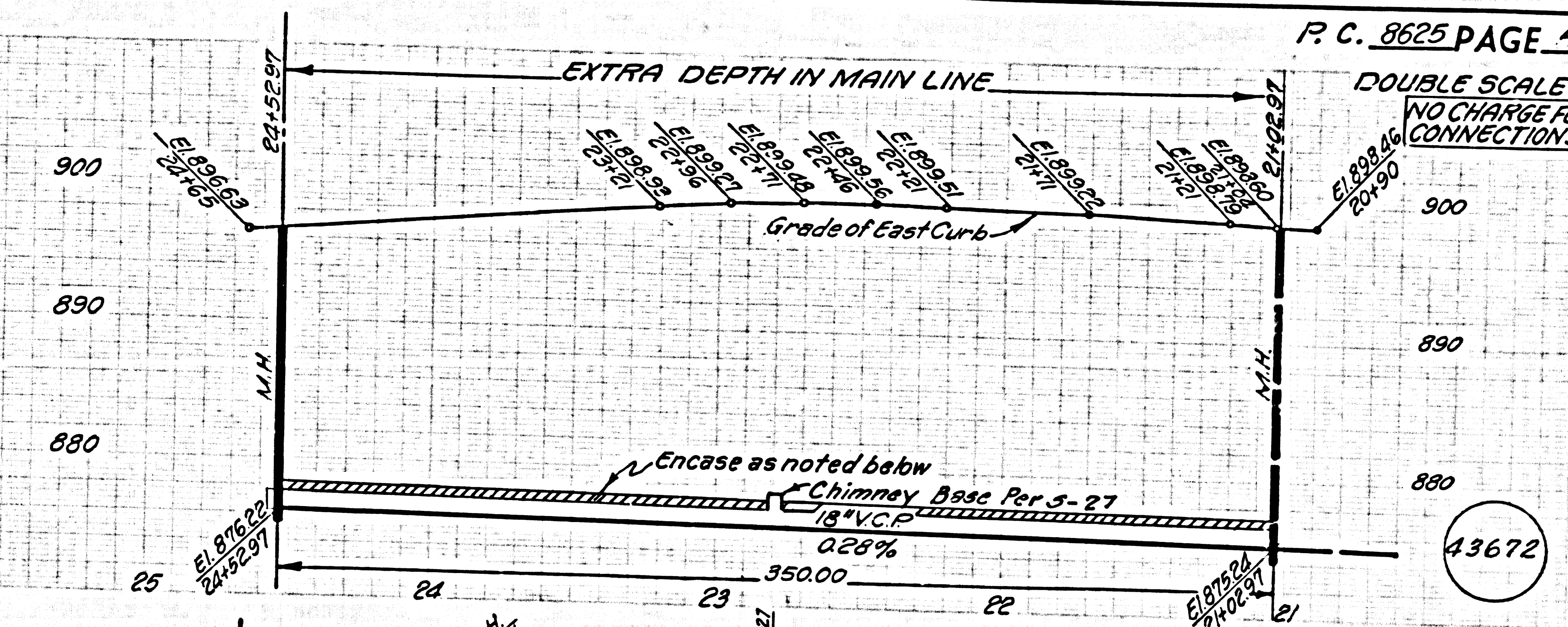
43670



P. C. 8625 PAGE 4  
 DOUBLE SCALE  
 NO CHARGE FOR CONNECTIONS

43671

DOUBLE SCALE  
NO CHARGE FOR  
CONNECTIONS



ISSUE NO HOUSE CONNECTION PERMITS - MAIN LINE MUST BE EXTENDED

