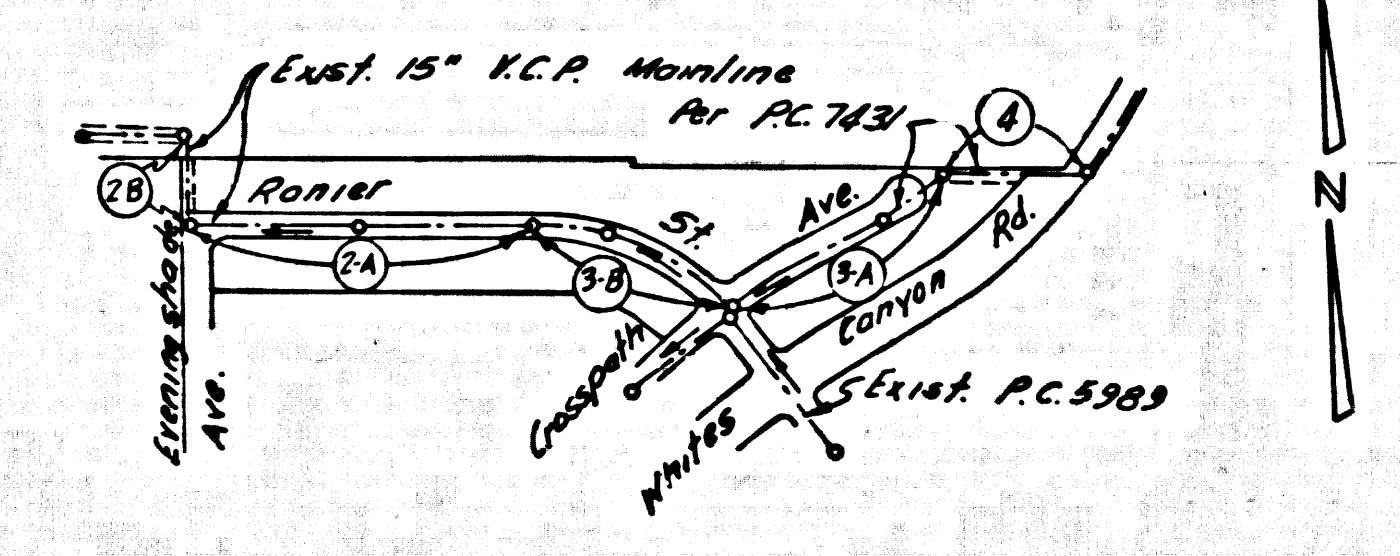


B.M. S.L. 1729 ELEV. 1356.859  
 U.S. Peg 2602 on West Curb 5' South  
 of D.C.R. at S.W. Cor. of White Cr.  
 No. and East 55' 58" South and 40'  
 West of intersection  
**NEWHALL QUAD. 19 58**

Full compliance with Section 306-1.13 of the Special Provisions  
 will be required for backfill in Streets. Certification of  
 backfill composition and sand operators by a qualified  
 Registered Testing Laboratory shall be provided by the permittee  
 prior to the issuance of a certificate of partial  
 acceptance.

**NOTICE TO CONTRACTOR:**  
 The existence and location of any underground pipes,  
 or structures shown on these plans were obtained  
 by a search of available records. To the best of our  
 knowledge, there are no existing utilities except as  
 shown on these plans.  
 The contractor is required to take precautionary  
 measures to protect the existing utility lines and any  
 lines not of record or not shown on these plans.

*E. U. Balducci Jr.*  
 P.C.E. 1533



Numbers in circles indicate page numbers.

**INDEX MAP**  
 P.C. NO. 8633  
 TRACT NO. 28079  
 SCALE: 1"=500'

**DOUBLE SCALE  
 NEWHALL BLDG. DIST. NO. 8.2**

PROFILE, ALIGNMENT AND GRADE OF **P.C. 8633**  
**SANITARY SEWERS PAGE 1**

TRACT NO. 28079

PRIVATE CONTRACT NO. 8633

W.S. 62-8,2  
 2 SHEETS, 4 PAGES

SCALE: HORIZ. 1"=40' VERT. 1"=4'

PREPARED IN THE OFFICES OF

**ANDEL ENGINEERING CO.**

*E. S. Andel*  
 REG. C.E. NO. 10533

**NOTE:**  
 WORK SHALL BE CONSTRUCTED ACCORDING TO STANDARD SPECIFICATIONS FOR PUBLIC WORKS  
 DIVISION 1100 AND 1110 SUPPLEMENTED AND MODIFIED BY SPECIAL PROVISIONS  
 DATED APRIL 1976 AND SHALL BE PROTECTED ONLY IN THE PRESENCE OF THE  
 COUNTY ENGINEER OR HIS REPRESENTATIVE. APPROVAL OF THIS PLAN BY THE  
 COUNTY ENGINEER DOES NOT CONSTITUTE A REPRESENTATION AS TO THE ACCURACY OF THE  
 LOCATION OF OR THE EXISTENCE OR NON-EXISTENCE OF ANY UNDERGROUND UTILITY PIPE, OR  
 STRUCTURE WITHIN THE LIMITS OF THE PROJECT. THIS NOTE APPLIES TO ALL PAGES.  
 IF WORK IS TO BE DONE IN A STATE HIGHWAY, A PERMIT MUST BE OBTAINED FROM THE STATE OF CALIFORNIA,  
 DIVISION OF HIGHWAYS, 120 SOUTH SPRING STREET, LOS ANGELES, CALIFORNIA.  
 THIS DRAWING AND THE DATA HEREON ARE HEREBY MADE A PART OF THE SPECIFICATIONS.

- NOTES:**
- PROVIDE STAKES ON THE PROPERTY LINE OR PROPERTY LINES PRODUCED AT RIGHT ANGLES TO THE SEWER LINE AT THE CENTER LINE OF EACH MANHOLE.
  - NO REPRESENTATIVE OF THE COUNTY ENGINEER WILL SURVEY OR LAY OUT ANY PORTION OF THE WORK.
  - THE PRIVATE ENGINEER SHALL FURNISH THE COUNTY ENGINEER WITH GRAB SHEETS AND STATIONING FOR ALL HOUSE LATERALS AND "T" BRANCHES AND SHALL PROVIDE STAKES FOR THEM AT THEIR PROPER LOCATIONS WITH STATIONING PLAINLY MARKED. ALL HOUSE LATERALS SHALL BE CONSTRUCTED IN A STRAIGHT ALIGNMENT AT RIGHT ANGLES FROM THE MAIN LINE SEWER EXCEPT AS SHOWN ON THE PLANS.  
 ANY CHANGE IN ALIGNMENT SHALL BE REQUESTED IN WRITING BY THE PRIVATE ENGINEER.
  - THE PRIVATE ENGINEER SHALL FURNISH THE HOUSE LATERAL DEPTH AT THE PROPERTY LINE BELOW THE TOP OF CURB ELEVATION FOR EACH HOUSE LATERAL ON THE GRADE SHEET.
  - NO REVISIONS SHALL BE MADE IN THESE PLANS WITHOUT THE APPROVAL OF THE COUNTY ENGINEER.
  - THE CONTRACTOR SHALL NOTIFY THE CONSTRUCTION DIVISION BY TELEPHONE, MADISON 4-02, EXT. 61531, AT LEAST TWENTY-FOUR HOURS BEFORE STARTING ANY WORK UNDER THE CONTRACT.
  - MANHOLES SHALL BE BRICK SEWER STRUCTURES PER S-1, PRECAST CONCRETE MANHOLES PER S-26 EXCEPT AS NOTED.
  - "T" BRANCHES MAY BE USED FOR CONNECTIONS TO EXISTING SEWERS EXCEPT AS NOTED.
  - MANHOLE TOPS IN UNIMPROVED RIGHTS-OF-WAY TO BE SIX INCHES ABOVE FINISHED GRADE.
  - USE EXTRA STRENGTH PIPE. ALL PIPE IS STANDARD DEPTH EXCEPT AS NOTED.
  - EXTRUSTED CLAY PIPE MANHOLE SHALL BE TYPE "D" OR "M" PER STD. SPEC. SEC. 206-2.
  - IF A POWER POLE IS WITHIN THREE FEET OF THE SEWER, THE SEWER SHALL BE ENCASED, PER S-23, TWO FEET ON EACH SIDE FROM THE POINT OF INTERFERENCE.
  - IF DURING THE COURSE OF CONSTRUCTION IT IS DETERMINED THAT THERE IS LESS THAN FOUR FEET OF COVER OVER THE TOP OF A MAIN LINE OR HOUSE LATERAL V.C.P. SEWER WHICH IS NOT INDICATED ON THE PLANS, THE PIPE SHALL BE ENCASED PER S-23, UNLESS OTHERWISE APPROVED BY THE COUNTY ENGINEER.
  - HOUSE LATERALS TO BE CONSTRUCTED WITH INVERTS AT PROPERTY LINE SIX FEET BELOW CURB GRADE EXCEPT AS NOTED.
  - RESURFACE ALL TRENCHES WITHIN PAVED AREAS TO MEET L.A. COUNTY ROAD DEPT. OR CALIFORNIA STATE HIGHWAY REQUIREMENTS IN ACCORDANCE WITH PERMITS.
17. REFER TO SECTION 7-1.1.1 OF STANDARD SPECS REGARDING SAFETY ORDERS.  
 18. SINGLE PIPE BEGINNING TO CONDUIT TO S-2.  
 19. THE FOLLOWING COUNTY ENGINEER STANDARD REVISIONS APPLY TO THIS PROJECT:
- |          |                                      |      |
|----------|--------------------------------------|------|
| REVISION | PUBLIC SAFETY REQUIREMENTS           | S-1  |
| REVISION | MANHOLE                              | S-2  |
| REVISION | MANHOLE PRECAST CONCRETE M.C.R.      | S-26 |
| REVISION | LOCKING M.C.R. FRAME & COVER         | S-27 |
| REVISION | STANDARD MANHOLE STEP                | S-28 |
| REVISION | GRADING AND ENCASMENT                | S-23 |
| REVISION | W/S OF TRENCH SUPPORT                | S-24 |
| REVISION | ALLOWABLE TRENCH WIDTHS              | S-25 |
| REVISION | RECONSTRUCTION OF BRICK MANHOLE TOPS | S-29 |
| REVISION | RODDERS FOR HOUSE LATERALS           | S-30 |

**COLLECT CHARGES  
 AS INDICATED**

No connections for the disposal of  
 industrial wastes shall be made to  
 sewers shown on these drawings  
 without written permission from the  
 Chief Engineer and General Manager  
 of the County Sanitation Division.

COUNTY OF LOS ANGELES, CALIFORNIA  
 COUNTY ENGINEER  
 J. D. PARKHURST, CHIEF ENGINEER

HARVEY T. BRANDT  
 ASSISTANT DIVISION ENGINEER

CHECKED BY *R.D. [Signature]* 8-11-71  
 REG. C.E. NO. 16390

42718

J.N.025002

