

D.M. EYING, EICH 166 DTA, ROLB 474-418  
 T.C. WINDLER, E.A. KERR, AVE. C.D.S.M. 704  
 31 E. TELEGRAPH RD. 25 S. E. 200' W. 8'  
 104th AVE. KINERA QUAD 1960

**NOTICE TO CONTRACTOR**  
 THE EXISTENCE AND LOCATION OF ALL UNDERGROUND UTILITY PIPES OR STRUCTURES SHOWN ON THESE PLANS ARE OBTAINED BY A SEARCH OF THE AVAILABLE RECORDS. TO THE BEST OF OUR KNOWLEDGE THERE ARE NO EXISTING UTILITIES EXCEPT AS NOTED ON THIS PLAN.  
 THE CONTRACTOR IS REQUIRED TO TAKE ALL CAUTIONARY MEASURES TO PROTECT THE UTILITY LINES SHOWN AND ANY OTHER LINES NOT OF RECORD OR NOT SHOWN ON THIS DRAWING.

**STREET RESURFACING:**  
 STREET RESURFACING METHODS SHALL BE IN ACCORDANCE WITH SECTION 506.12.0 OF THE SPECIAL PROVISIONS.  
 FRENCH IN TELEGRAPH ROAD AT INTERSECTION WITH ARIZONA AVENUE TO BE RESURFACED WITH 3" OF CONCRETE ON 6" OF CRUSHED AGGREGATE BASE ACCORDING TO ROAD DEPARTMENT STANDARD NO. 28.01.

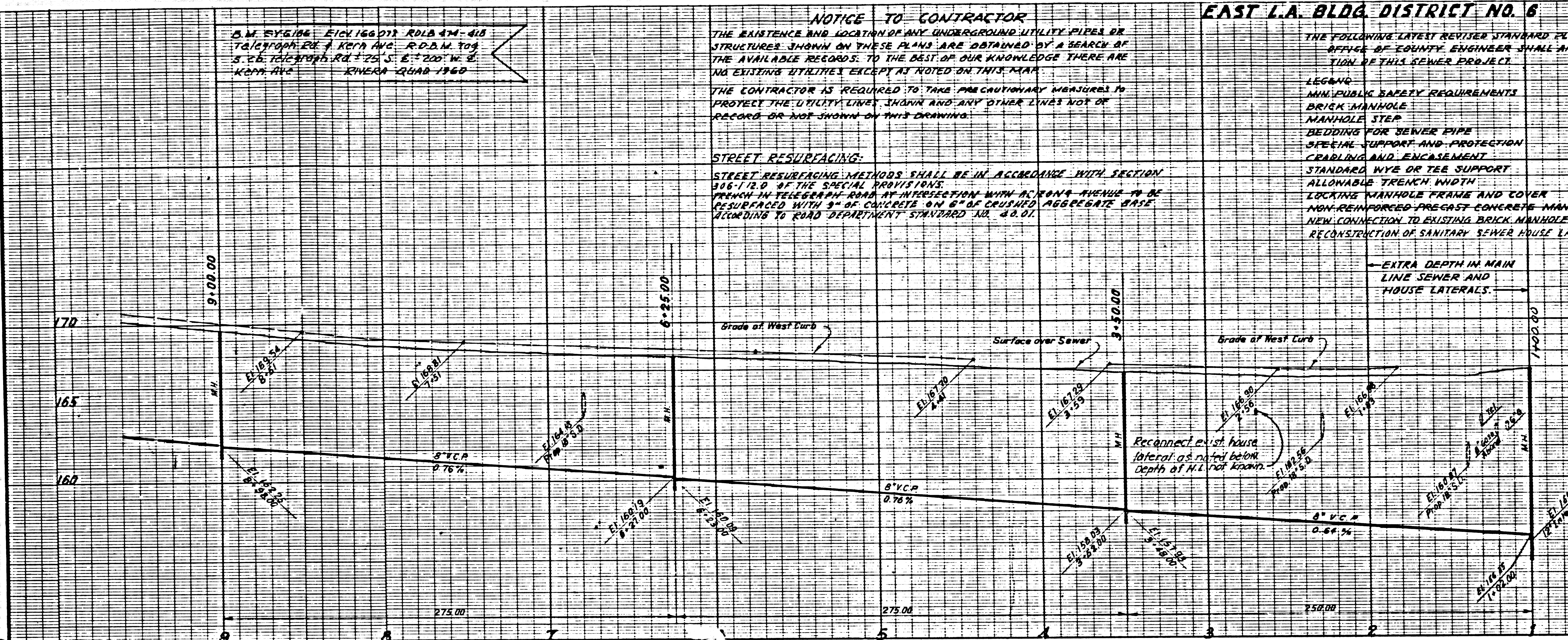
**EAST L.A. BLDG. DISTRICT NO. 6**

THE FOLLOWING LATEST REVISED STANDARD PLANS ON FILE IN THE OFFICE OF COUNTY ENGINEER SHALL APPLY IN THE CONSTRUCTION OF THIS SEWER PROJECT.

LEGEND	S 1
MIN. PUBLIC SAFETY REQUIREMENTS	S 2
BRICK MANHOLE	S 3
MANHOLE STEP	S 7
BEDDING FOR SEWER PIPE	S 16
SETTING CURB AND PROTECTION	S 22
CRADLE AND EMBASEMENT	S 23
STANDARD WYE OR TEE SUPPORT	S 24
ALLOWABLE TRENCH WIDTH	S 33
LOCKING MANHOLE FRAME AND COVER	S 35
NON-REINFORCED PRECAST CONCRETE MANHOLES	S 36
NEW CONNECTION TO EXISTING BRICK MANHOLE	S 13
RECONSTRUCTION OF SANITARY SEWER HOUSE LATERALS	S 29

- GENERAL SEWER NOTES**
- WORK SHALL BE CONSTRUCTED ACCORDING TO THE STANDARD SPECIFICATIONS FOR PUBLIC WORKS CONSTRUCTION COUNTY ENGINEER SPECIAL PROVISIONS FOR THE CONSTRUCTION OF SANITARY SEWERS DATED APRIL 1972 AND SHALL BE PROSECUTED ONLY IN THE PRESENCE OF THE COUNTY ENGINEER.
  - ALL PIPE IS STANDARD DEPTH EXTRA STRENGTH VITRIFIED CLAY PIPE, EXCEPT AS NOTED.
  - NO REVISIONS SHALL BE MADE IN THESE PLANS WITHOUT THE APPROVAL OF THE COUNTY ENGINEER.
  - THE CONTRACTOR SHALL NOTIFY THE CONSTRUCTION DIVISION BY TELEPHONE (213) 219-7283 AT LEAST 48 HOURS BEFORE STARTING AND WORK UNDER THIS CONTRACT.
  - ALL MANHOLES SHALL BE EITHER BRICK PER S-3 OR PRECAST CONCRETE PER S-36, EXCEPT AS NOTED.
  - USE LOCKING MANHOLE FRAMES AND COVERS PER S-35, EXCEPT AS NOTED.
  - VITRIFIED CLAY PIPE JOINTS SHALL BE TYPE "A" "X" OR "G" PER SECTION 208.2 OF STANDARD SPECIFICATIONS FOR ALL VITRIFIED CLAY PIPE JOINTS.
  - REFER TO SECTION 1-18.4.1 OF STANDARD SPECIFICATIONS REGARDING PIPE JOINTS.
  - CONSTRUCT HOUSE LATERALS WITH INVERTS AT PROPERTY LINE 6 FEET BELOW CURB GRADE, EXCEPT AS NOTED.
  - SEWER TO BE TESTED FOR LEAKAGE PER SECTION 306-2.3.7 OF STANDARD SPECIFICATIONS AND SPECIAL PROVISIONS.
  - "Y" OR "X" BRANNERS MAY BE USED FOR CONNECTION TO MAIN LINE SEWERS, EXCEPT AS NOTED.
  - ALL SEWER PIPES AND APPURTENANCES SHALL BE ABANDONED IN ACCORDANCE WITH SEC. 306-3 OF STANDARD SPECIFICATIONS.
  - FOR LEGEND SEE STANDARD PLAN S-1.
  - CONTRACTOR SHALL MAINTAIN SEWER SERVICE AT ALL TIMES DURING CONSTRUCTION OF MAIN LINE SEWER AND HOUSE LATERALS.

NO CHARGE FOR CONNECTIONS



BEFORE TO BE EXCAVATED THE CONTRACTOR SHALL SUBMIT TO AND OBTAIN APPROVAL FROM THE COUNTY ENGINEER OR A DETAILED PLAN SHOWING THE DESIGN OF SHIELDING, BRACING, SLOPING OR OTHER PROVISIONS FOR WORKER PROTECTION FROM THE HAZARD OF COLLAPSE. ALL SUCH PROVISIONS MUST BE IN ACCORDANCE WITH THE STANDARD SPECIFICATIONS ESTABLISHED BY THE CONSTRUCTION SAFETY OFFICE, IT SHALL BE PREPARED BY A REGISTERED CIVIL OR STRUCTURE ENGINEER.

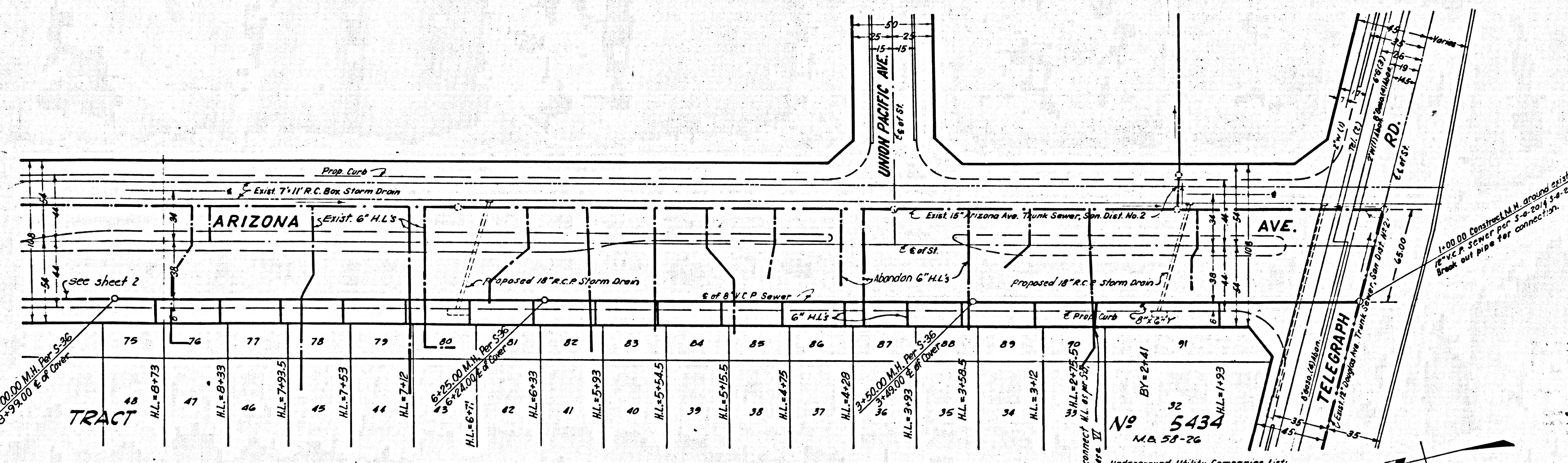
J.N. 0775.38

**PROFILE, GRADE AND ALIGNMENT OF SANITARY SEWERS TO BE CONSTRUCTED IN ARIZONA AVENUE**

PRIVATE CONTRACT NO 8637  
 SHEET 1 OF 3  
 COUNTY OF LOS ANGELES  
 HARVEY T. BRANDT COUNTY ENGINEER

DESIGNED BY: *Michael J. D'Amico*  
 DATE: 9-28-72  
 APPROVED BY: *[Signature]*  
 HEAD DESIGN BRANCH, SANITATION DIV.  
 DATE: 9/27/72

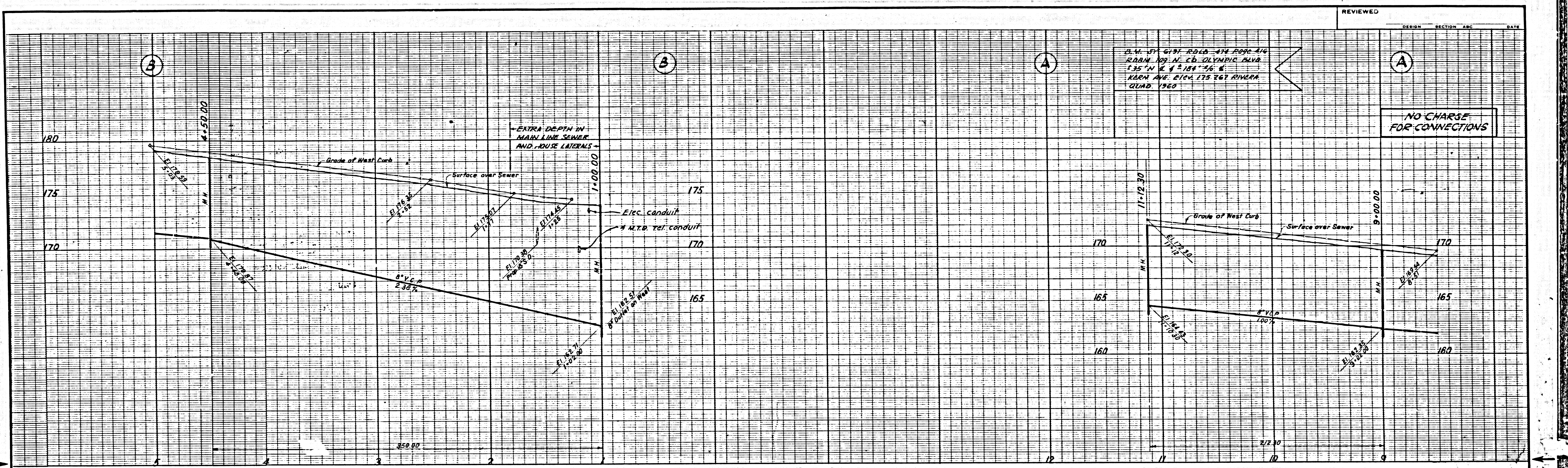
CHIEF ENGINEER JOHN D. PARKHURST  
 COUNTY SANITATION DISTRICT NO. 2  
 APPROVED BY: *[Signature]*  
 OFFICE ENGINEER



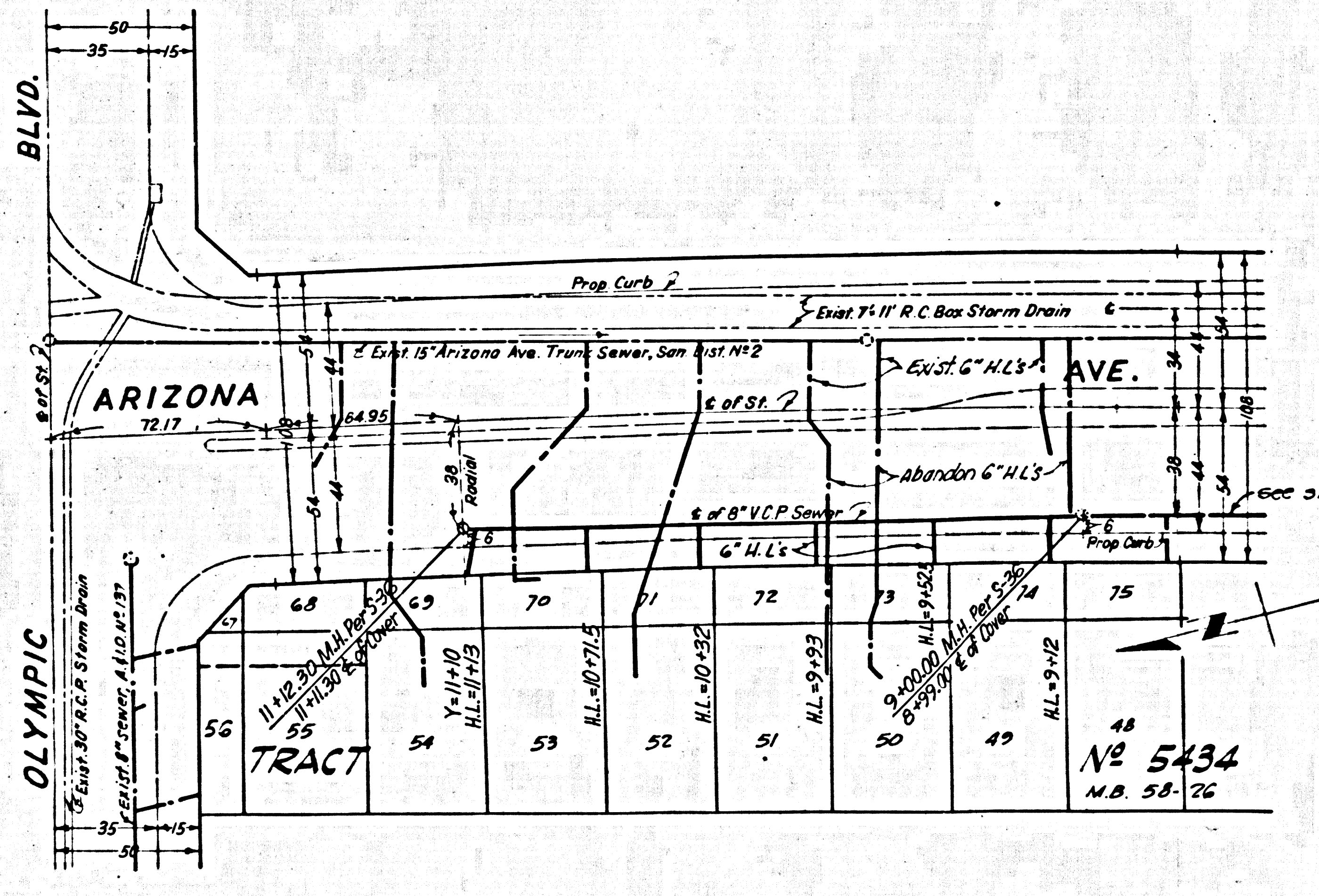
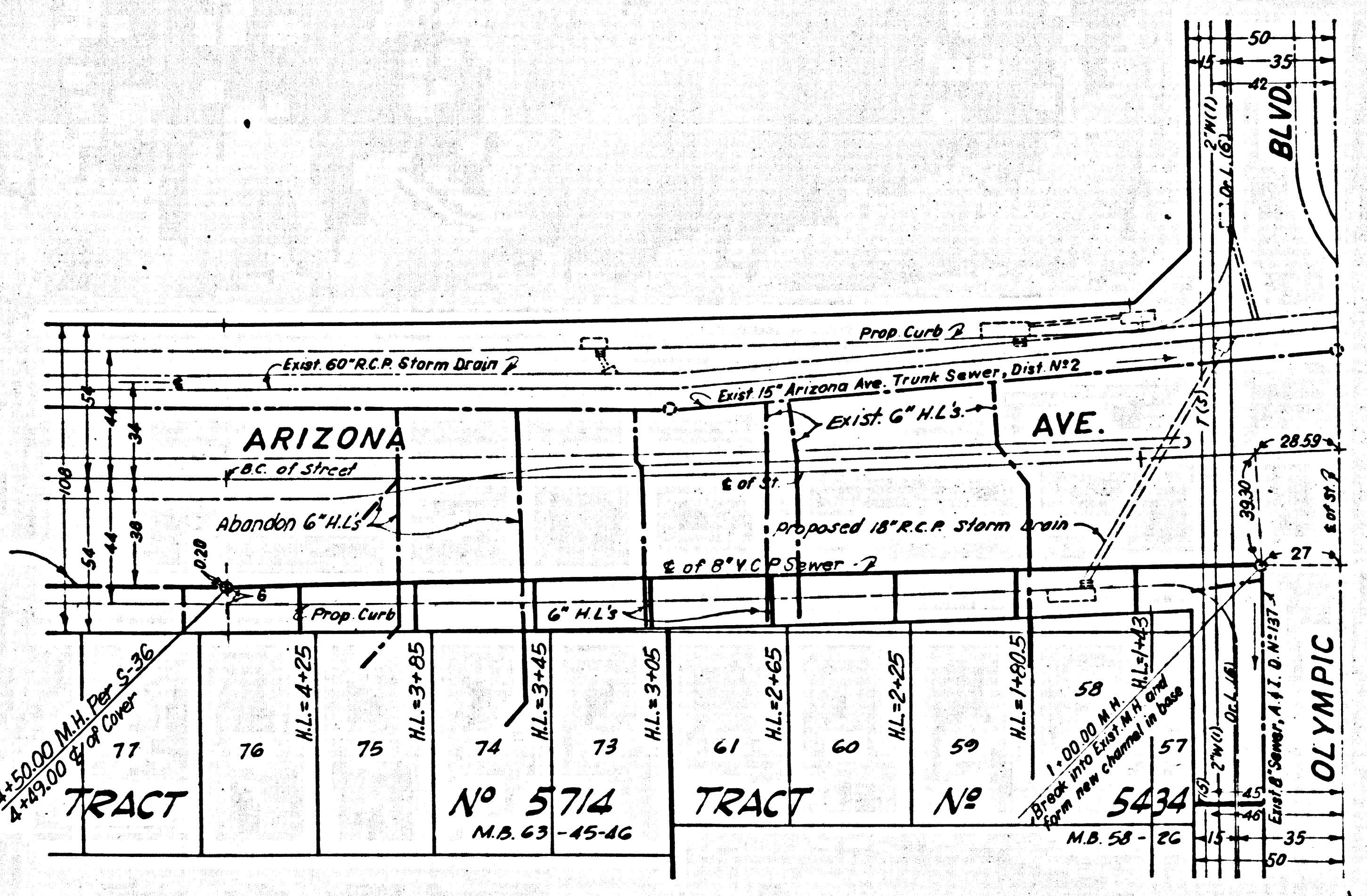
- Underground Utility Companies List:**
- California Water Service
  - Southern California Tel. Co.
  - Southern California Gas Co.
  - Union Oil
  - Pacific Telephone Co.
  - Los Angeles County Road Department

LOS ANGELES COUNTY ROAD DEPARTMENT	
HIGHWAY DIVISION	JOB NAME ARIZONA AVENUE
	LIMITS VERONA STREET TO TELEGRAPH ROAD
DATE BY	JOB NO.
REVISIONS	SHEET OF SHTS. DWG. NO.
SCALE HORIZ. 1"=40'	VERT. 1"=5'

44504



R.C. 8637 SHEET 2 OF 3



DATE		BY		REVISIONS		SCALE		HORIZ. VERT.		JOB NO.		SHEET OF SHTS.	

LOS ANGELES COUNTY ROAD DEPARTMENT  
**HIGHWAY**  
 DIVISION  
**JOB NAME** ARIZONA AVENUE  
 LIMITS VERONA STREET TO TELEGRAPH ROAD

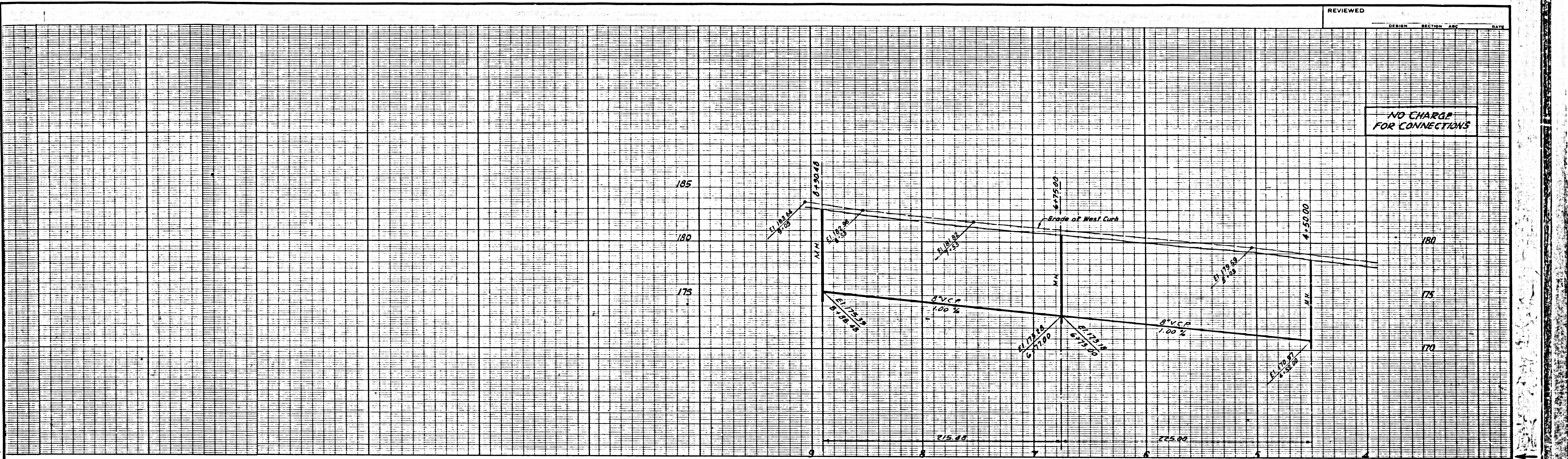
44505

NO 5434  
 M.B. 58-76

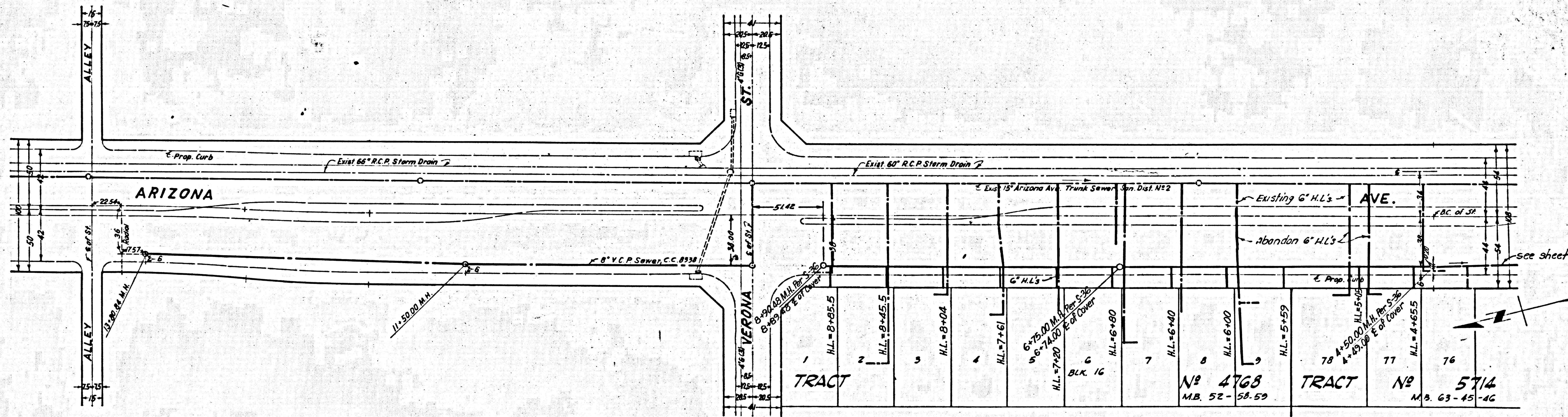
R.C. 8637

DESIGN	SECTION	DATE

NO CHARGE FOR CONNECTIONS



P.C. 8637 SHEET 3 OF 3



44506

LOS ANGELES COUNTY ROAD DEPARTMENT	
HIGHWAY	JOB NAME ARIZONA AVENUE
DIVISION	LIMITS VERONA STREET TO TELEGRAPH ROAD
DATE	BY
REVISIONS	JOB NO.
HORIZ. SCALE 1"=40'	VERT. SCALE 1"=4'
SHEET	OF SHTS.
DWG. NO.	