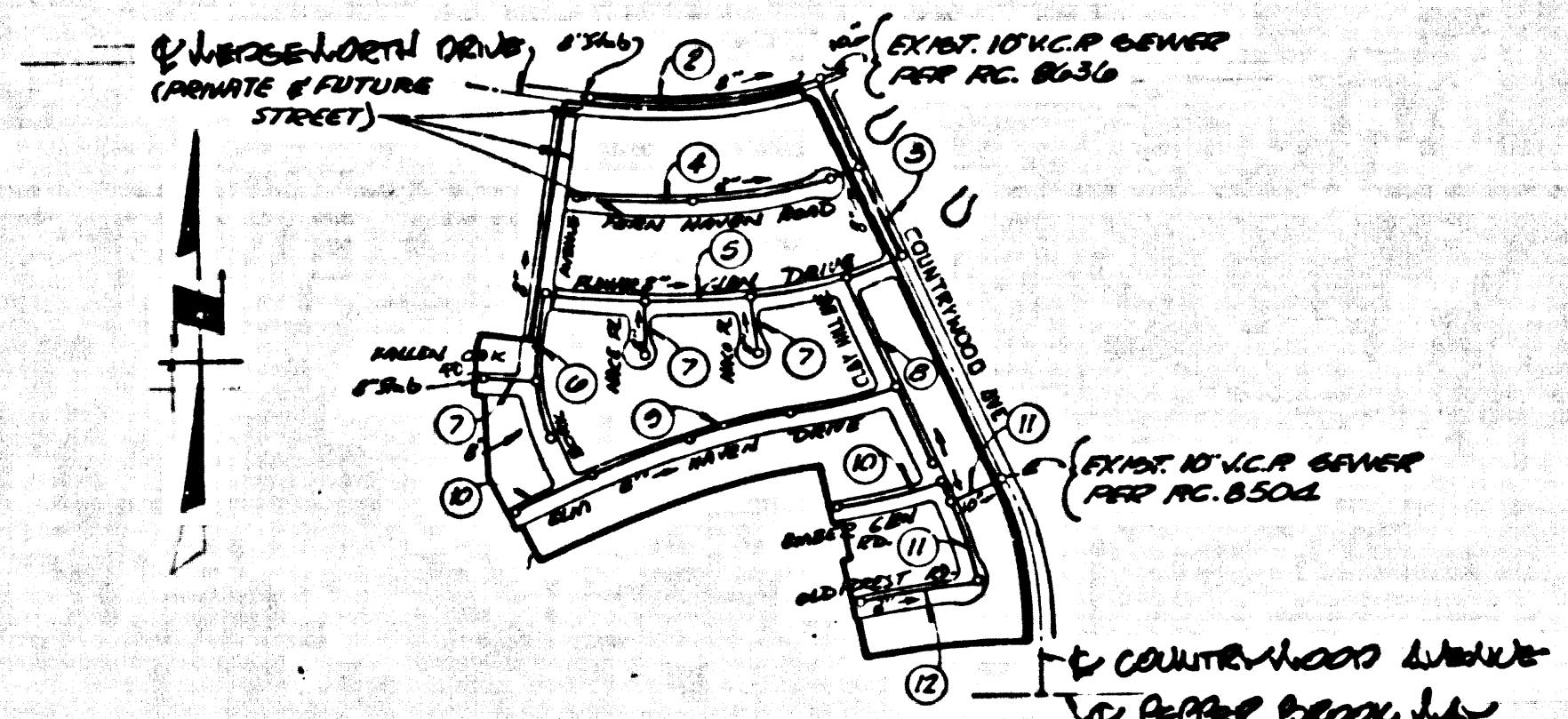


B.M. 20217 ELEV. 420.12
 ELEV. 420.12 IN CD. APP. FOR TOP OF
 12" DIA. W. C.P. 117' COL. W. 80'
 PARALLEL TO
 OREGON QUAD. 19-10



INDEX MAP
 SCALE 1"=100'
 P.C. 8640
 TRACT NO. 27300

NOTE
 APPROVAL OF THIS PLAN BY THE COUNTY OF LOS ANGELES
 DOES NOT CONSTITUTE A REPRESENTATION AS TO THE ACCURACY
 OF THE LOCATION OR THE EXISTENCE OR NON-EXISTENCE OF
 ANY UNDERGROUND UTILITY PIPE, OR STRUCTURE WITHIN THE
 LIMITS OF THIS PROJECT.

REVISION No 1 Sep. 3, 1971
 1. Page 2, Relocate M.H. from Sta. 2147.86 to Sta. 2142.86.
 2. Page 3, Show 12" Water Line at Sta. 0+17.00 and Encase sewer
 under Water Line.
 3. Page 7B, Sta. 0+00 to Sta. 1+74.41 change grade from
 3.62% to 2.72% & change elevations of M.H. Sta. 1+74.41.
 APPROVED *Thomas S. Howard* 7 SEP 27 1971
 Office of County Engineer - R.E. No. 19556

ISSUE NO HOUSE CONNECTION
 PERMITS UNTIL P.C. 8636 & 8504
 IS APPROVED BY THE BOARD
 OF SUPERVISORS.

COLLECT CHARGES
 AS INDICATED

GENERAL NOTES:

- ELEVATIONS ARE IN FEET ABOVE U.S.C. & G.S. SEA LEVEL DATUM OF 1929.
- NO REVISIONS SHALL BE MADE IN THESE PLANS WITHOUT THE APPROVAL OF THE COUNTY ENGINEER.
- NO REPRESENTATIVE OF THE COUNTY ENGINEER WILL VERIFY OR LAY OUT ANY PORTION OF THE WORK.
- GRADES TO WHICH THIS IMPROVEMENT IS TO BE CONSTRUCTED ARE SHOWN ON PLANS AND PROFILES. GRADE POINTS FOR TOP OF CURB, CENTER LINE OF STREETS, OR CENTER LINE OF ALLEYS ARE SHOWN BY CIRCLES ON PROFILES. AT ALL POINTS BETWEEN DESIGNATED POINTS THE GRADE SHALL BE ESTABLISHED SO AS TO CONFORM TO A STRAIGHT LINE DRAWN BETWEEN SAID DESIGNATED POINTS.
- THE PRIVATE ENGINEER SHALL FURNISH THE COUNTY ENGINEER WITH GRADE SHEETS AND STATIONING FOR ALL HOUSE LATERALS AND "T" OR "Y" BRANCHES AND SHALL PROVIDE STAKES FOR THEM AT THEIR PROPER LOCATIONS WITH STATIONING PLAINLY MARKED. ALL HOUSE LATERALS SHALL BE CONSTRUCTED IN A STRAIGHT ALIGNMENT AT RIGHT ANGLES FROM THE MAIN LINE SEWER EXCEPT AS SHOWN ON THE PLANS. HOUSE LATERALS FROM CHIMNEYS SHALL NOT HAVE AN ANGLE OF LESS THAN 45° WITH THE MAIN LINE SEWER. ANY CHANGE IN ALIGNMENT SHALL BE REQUESTED BY WRITING BY THE PRIVATE ENGINEER.
- THE PRIVATE ENGINEER SHALL FURNISH THE HOUSE LATERAL SEWER AT THE PROPERTY LINE BELOW THE TOP OF CURB ELEVATION FOR EACH HOUSE LATERAL ON THE GRADE SHEET.
- BEFORE WORK CAN BE STARTED, THE CONTRACTOR MUST OBTAIN A PERMIT TO EXCAVATE IN COUNTY STREETS FROM THE L.A. COUNTY ROAD DEPT., DISTRICT OFFICE NO. 1, AND PAY A FEE TO THE COUNTY ENGINEER, ROOM 7B, DOWNTOWN ADMIN. BLDG. 7251 IRVING BLVD. TROEN, CALIFORNIA. REGIONAL OFFICE, TO COVER THE COST OF CONSTRUCTION INSPECTION AND RECORD PLANS.
- IF WORK IS TO BE DONE ON A STATE HIGHWAY, A PERMIT MUST BE OBTAINED FROM THE STATE OF CALIFORNIA, DIVISION OF HIGHWAYS, 120 SOUTH SPRING STREET, LOS ANGELES, CALIFORNIA.
- APPROVAL OF THIS PLAN BY THE COUNTY OF LOS ANGELES DOES NOT CONSTITUTE A REPRESENTATION AS TO THE ACCURACY OF THE LOCATION OR THE EXISTENCE OR NON-EXISTENCE OF ANY UNDERGROUND UTILITY PIPE, OR STRUCTURE WITHIN THE LIMITS OF THIS PROJECT. THIS NOTE APPLIES TO ALL PAGES.
- REFER TO SECTION 7-18.41 OF THE STANDARD SPECIFICATIONS, REGARDING SAFETY ORDERS.

County Sanitation Districts shall be notified prior to the following so that required inspection can be made (Phone 537-1025 & 638-1181).
 Acceptance of the project.
 If connections for the disposal of industrial wastes shall be made as shown on these drawings without written approval of the Chief Engineer and General Manager of the County Sanitation Districts.

CONSTRUCTION NOTES:

- WORK SHALL BE CONSTRUCTED ACCORDING TO THE STANDARD SPECIFICATIONS FOR PUBLIC WORKS CONSTRUCTION (1976 EDITION WITH 1977 SUPPLEMENTS) AND COUNTY ENGINEER SPECIAL PROVISIONS FOR THE CONSTRUCTION OF SANITARY SEWERS DATED JANUARY 7, 1970 AND SHALL BE PROSECUTED ONLY IN THE PRESENCE OF THE COUNTY ENGINEER.
- THE CONTRACTOR SHALL NOTIFY THE CONSTRUCTION DIVISION BY TELEPHONE, IN LOS ANGELES 9-467, EXT. 8158, AT LEAST TWENTY-FOUR HOURS BEFORE STARTING ANY WORK UNDER THIS CONTRACT.
- HOUSE LATERALS TO BE CONSTRUCTED WITH INVERTS AT PROPERTY LINE 6 FEET BELOW CURB GRADE EXCEPT AS NOTED.
- WYE OR TEE BRANCHES MAY BE USED FOR CONNECTIONS TO MAINLINE SEWERS EXCEPT AS NOTED.
- ALL STRUCTURES SHALL BE BUILT ONCE MANHOLES PER 5.0 OF RECYCLED CONCRETE MANHOLES PER 5.5, EXCEPT AS NOTED.
- PROVIDE STAKES ON THE PROPERTY LINE OR PROPERTY LINES PRODUCE AT RIGHT ANGLES TO THE SEWER LINE AT THE CENTER LINE OF EACH MANHOLE.
- MANHOLES FOR UNIMPROVED RIGHTS OF WAY TO BE SIX INCHES ABOVE FINISHED GRADE.
- VERTICAL CURVE POINTS SHALL BE THE "P", "T", OR "C" PER STANDARD SPECIFICATIONS SECTION 200-2.
- IF A POWER POLE IS WITHIN THREE FEET OF THE SEWER, THE SEWER SHALL BE ENCASED, PER 5-23, CASE II, TWO FEET ON EACH SIDE FROM THE POINT OF INTERFERENCE.
- IF DURING THE COURSE OF CONSTRUCTION IT IS DETERMINED THAT THERE IS LESS THAN FOUR FEET OF COVER OVER THE TOP OF A MAIN LINE OF HOUSE LATERAL T.C.P. SEWER WHICH IS NOT INDICATED ON THE PLANS, THE PIPE SHALL BE ENCASED PER 5-23, CASE II UNLESS OTHERWISE APPROVED BY THE COUNTY ENGINEER.
- ALL JOINTS BETWEEN CAST IRON PIPE AND VITRIFIED CLAY PIPE SHALL BE MADE WITH A RUBBER SLEEVE JOINT, TYPE "C" OR "W", WITH BEARING IF NECESSARY PER STANDARD SPECIFICATIONS, SECTION 300-2.
- SEWERS TO BE TESTED FOR LEAKAGE PER SECTION 200-2.3.7 OF THE STANDARD SPECIFICATIONS AND SPECIAL PROVISIONS.
- REPLACE ALL TRENCHES WITHIN PAVED AREAS TO MEET L.A. COUNTY ROAD DEPT. OR CALIFORNIA STATE HIGHWAY REQUIREMENTS IN ACCORDANCE WITH PERMITS.
- FULL COMPLIANCE WITH SECTION 200-1.2.8 OF THE SPECIAL PROVISIONS WILL BE REQUIRED FOR BUREAU OF STREETS, CERTIFICATION OF BUREAU OF COMPLETION AND BOND FORUMULATED BY REGISTERED TESTERS. COMPLIANCE SHALL BE PROVIDED BY THE PERMITTEE PRIOR TO THE ISSUANCE OF A CERTIFICATE OF PRACTICAL ACCEPTANCE.

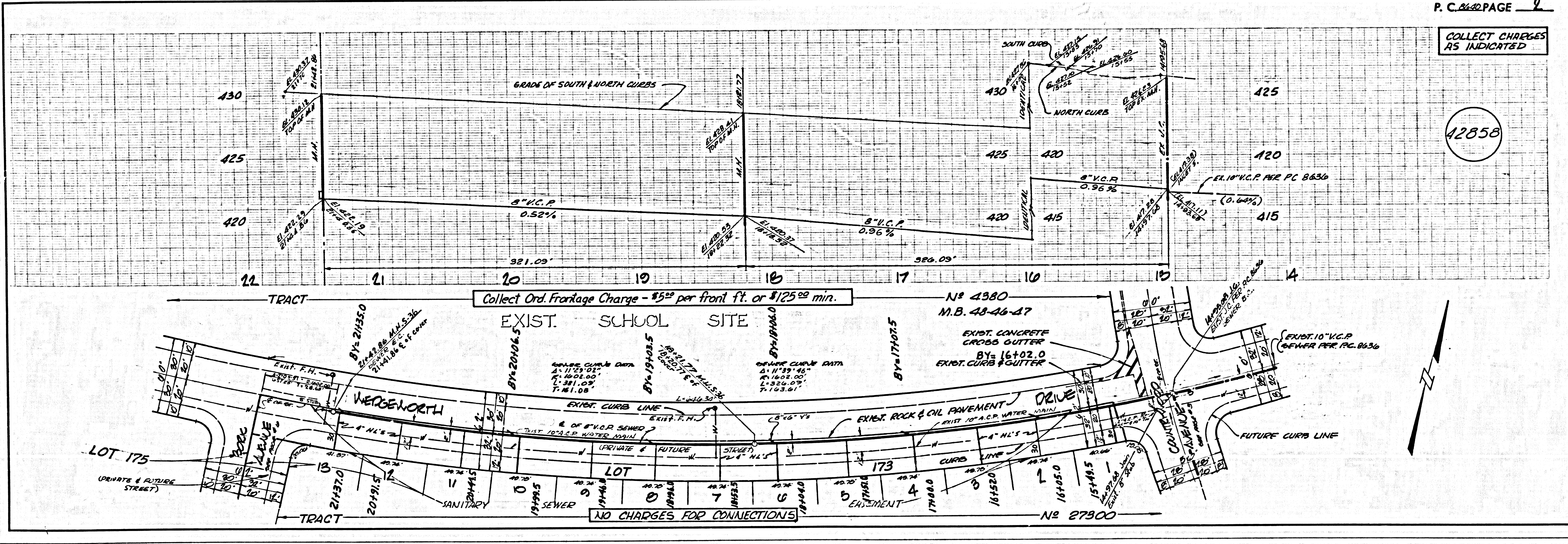
TRACT NO. 27300
 PRIVATE CONTRACT NO. 8640

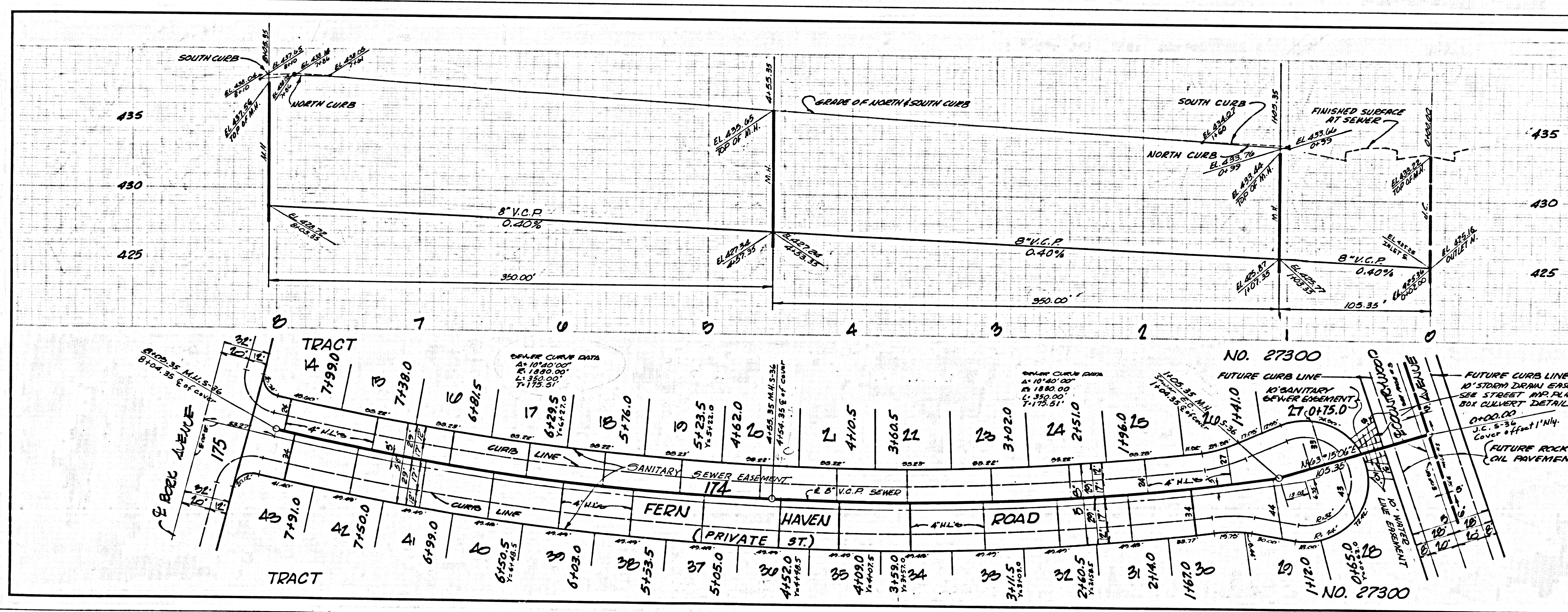
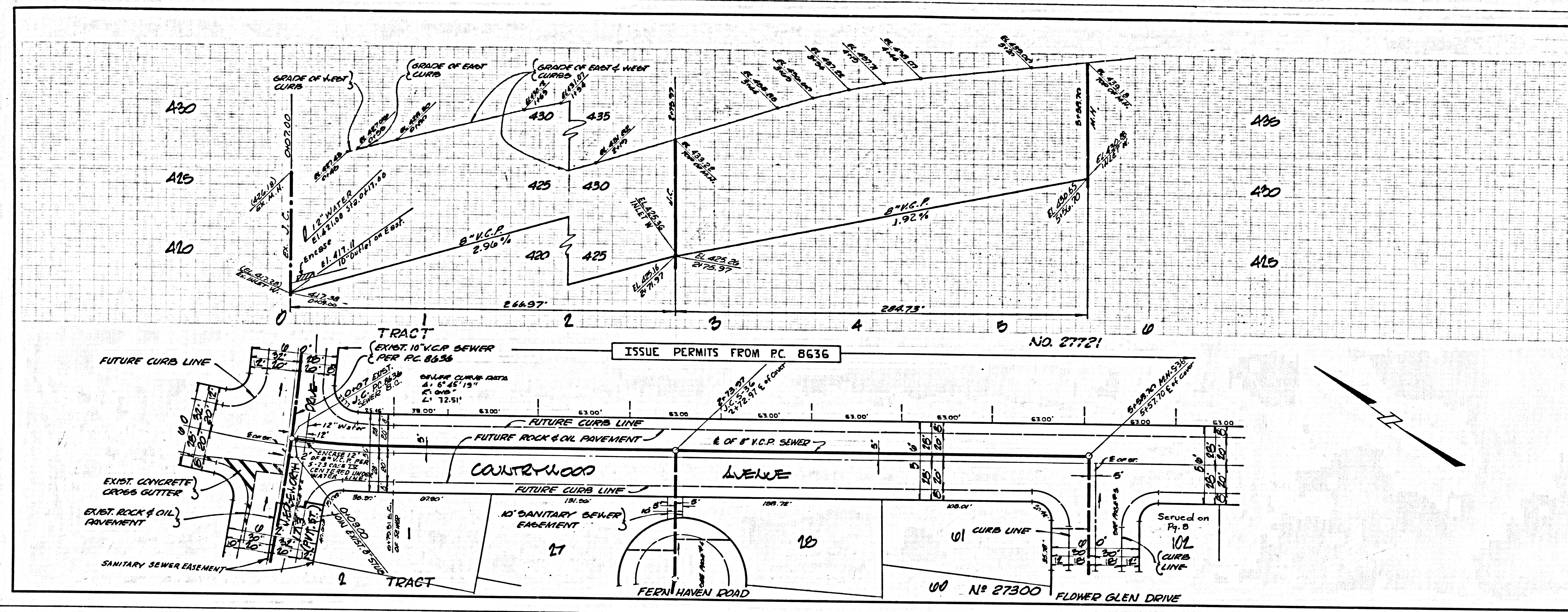
W.S. 38-B3
 10 SHEETS, 12 PAGES
 SCALE: VERT. 1"=4'
 HORIZ. 1"=40'
 JULY, 1971
 PREPARED IN THE OFFICES OF
 TOUPS ENGINEERING INC. 12857
 17251 IRVING BLVD. TROEN, CALIFORNIA
 BY: *J.M. D'Amico* REG. C.E. No. 14014

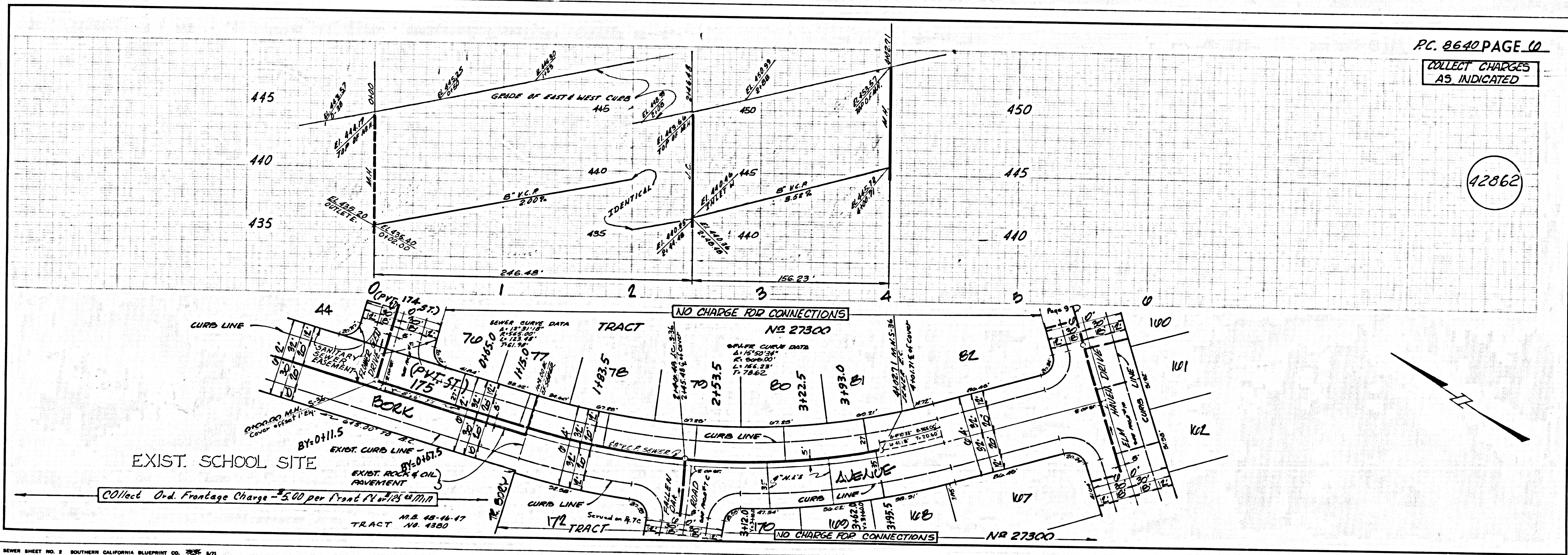
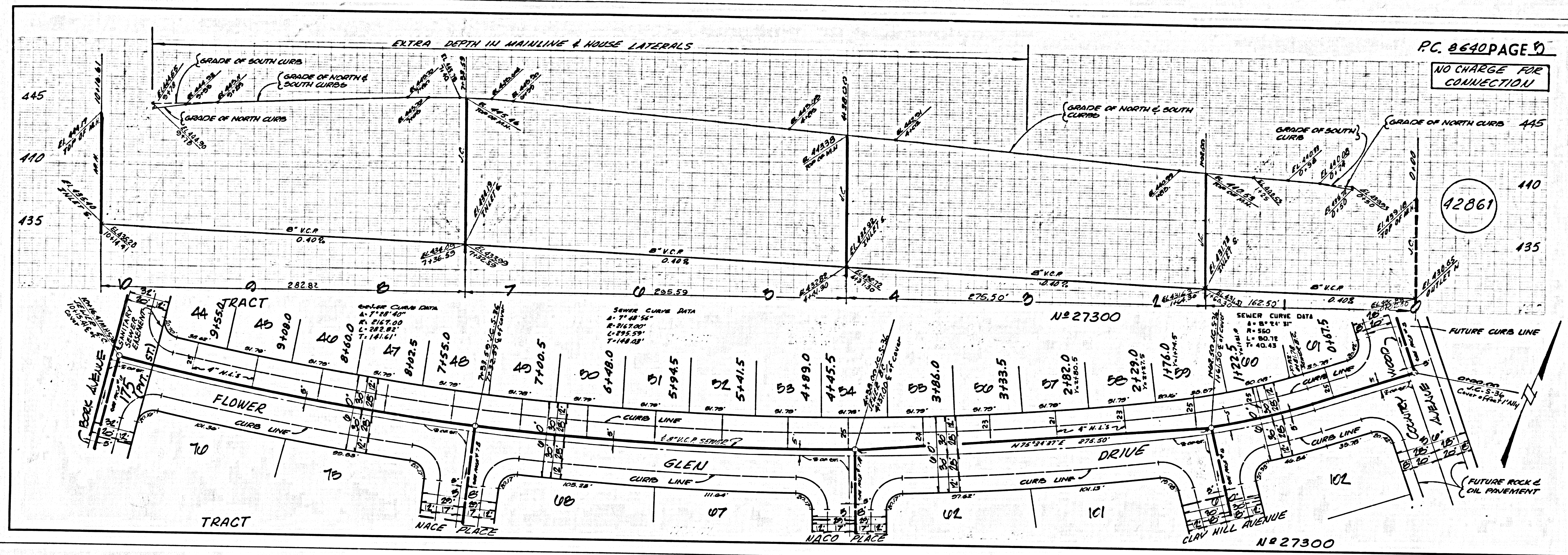
THE FOLLOWING LATEST REVERSED STANDARD PLANS ON FILE IN THE OFFICE OF THE COUNTY ENGINEER SHALL APPLY IN THE CONSTRUCTION OF THIS PROJECT.

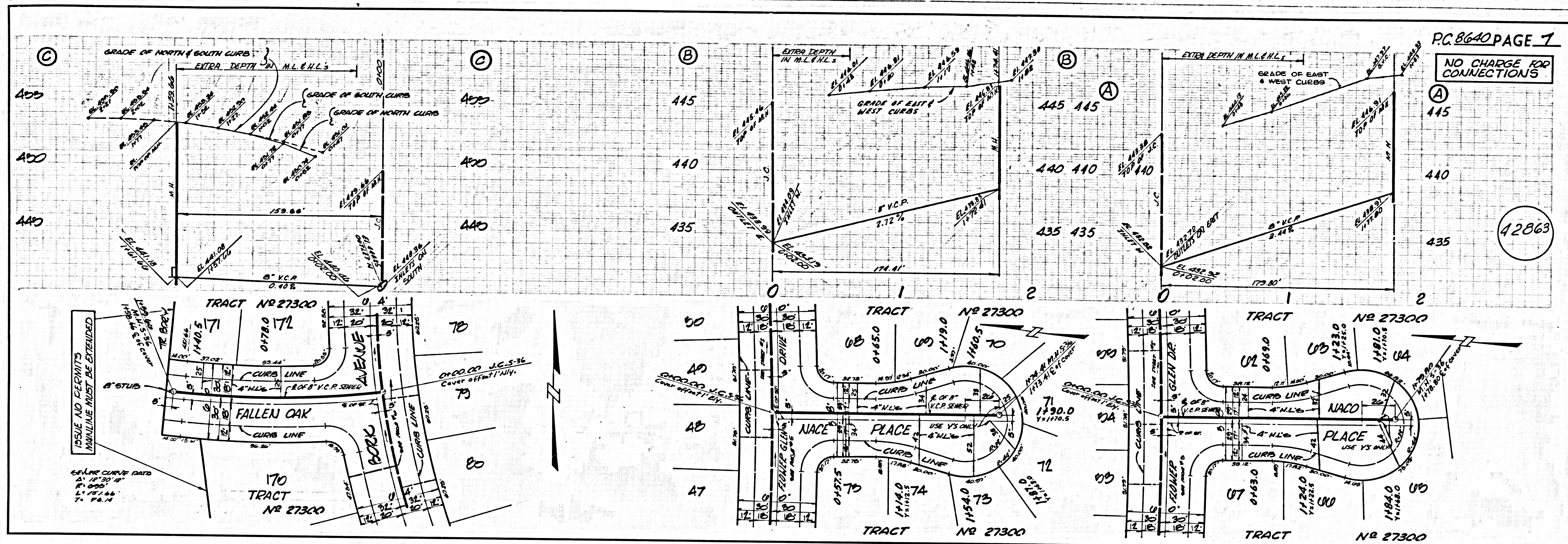
| | |
|---|------|
| MANHOLE PUBLIC SAFETY REQUIREMENTS | 5-8 |
| BRICK MANHOLE | 5-9 |
| STANDARD MANHOLE STEP | 5-17 |
| BEARING FOR SEWER PIPE | 5-21 |
| CALLING AND ENCASING | 5-22 |
| WYE OR TEE SUPPORT | 5-26 |
| ALLOWABLE TRENCH WIDTHS | 5-28 |
| LOCKING MANHOLE FRAME AND COVER | 5-29 |
| NON-REINFORCED PRECAST CONCRETE MANHOLE | 5-30 |

COUNTY OF LOS ANGELES, CALIFORNIA
 HARVEY T. BRANDT, COUNTY ENGINEER JOHN D. PARKHURST, CHIEF ENGINEER
 APPROVED *Thomas S. Howard* 8-31-71 APPROVED *John D. Parkhurst*
 REGIONAL ENGINEER (DATE) OFFICE ENGINEER
 CHECKED *Thomas S. Howard* DATE
 REG. C.E. No. 19156 2744471
 LA PUENTE BLDG. DIST. 20 J.N. 0280.02



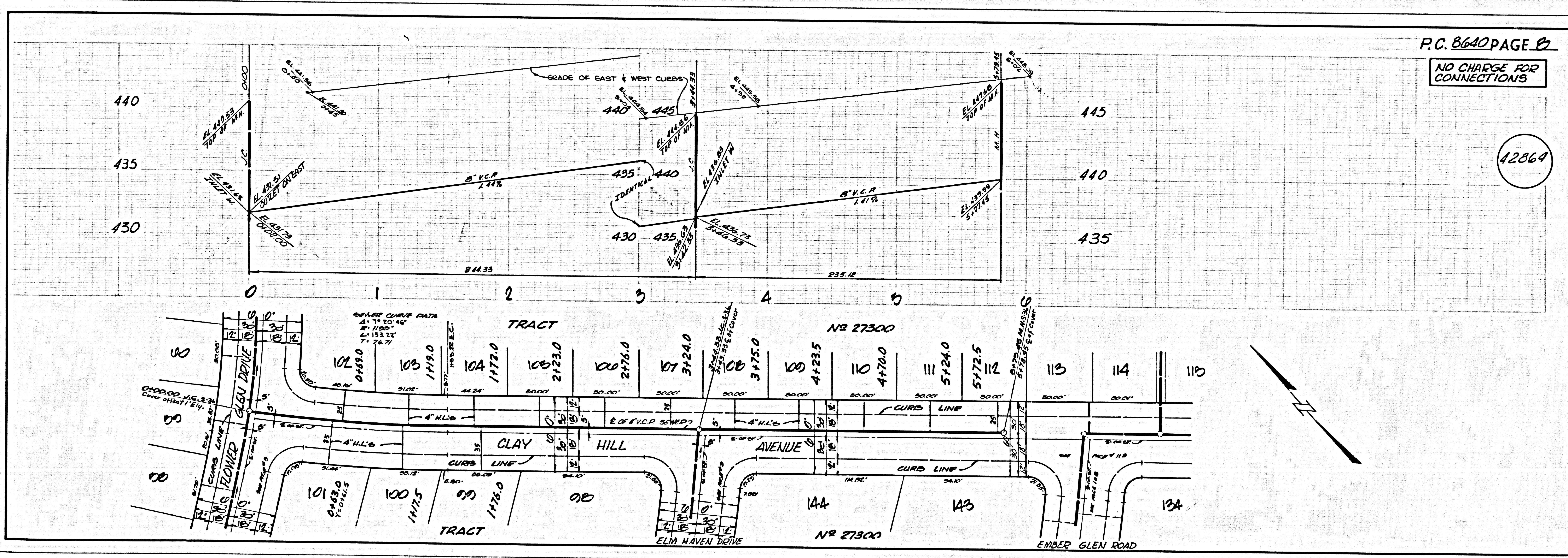






PC 8640 PAGE 1
NO CHARGE FOR CONNECTIONS

42863



PC 8640 PAGE 2
NO CHARGE FOR CONNECTIONS

42864

