

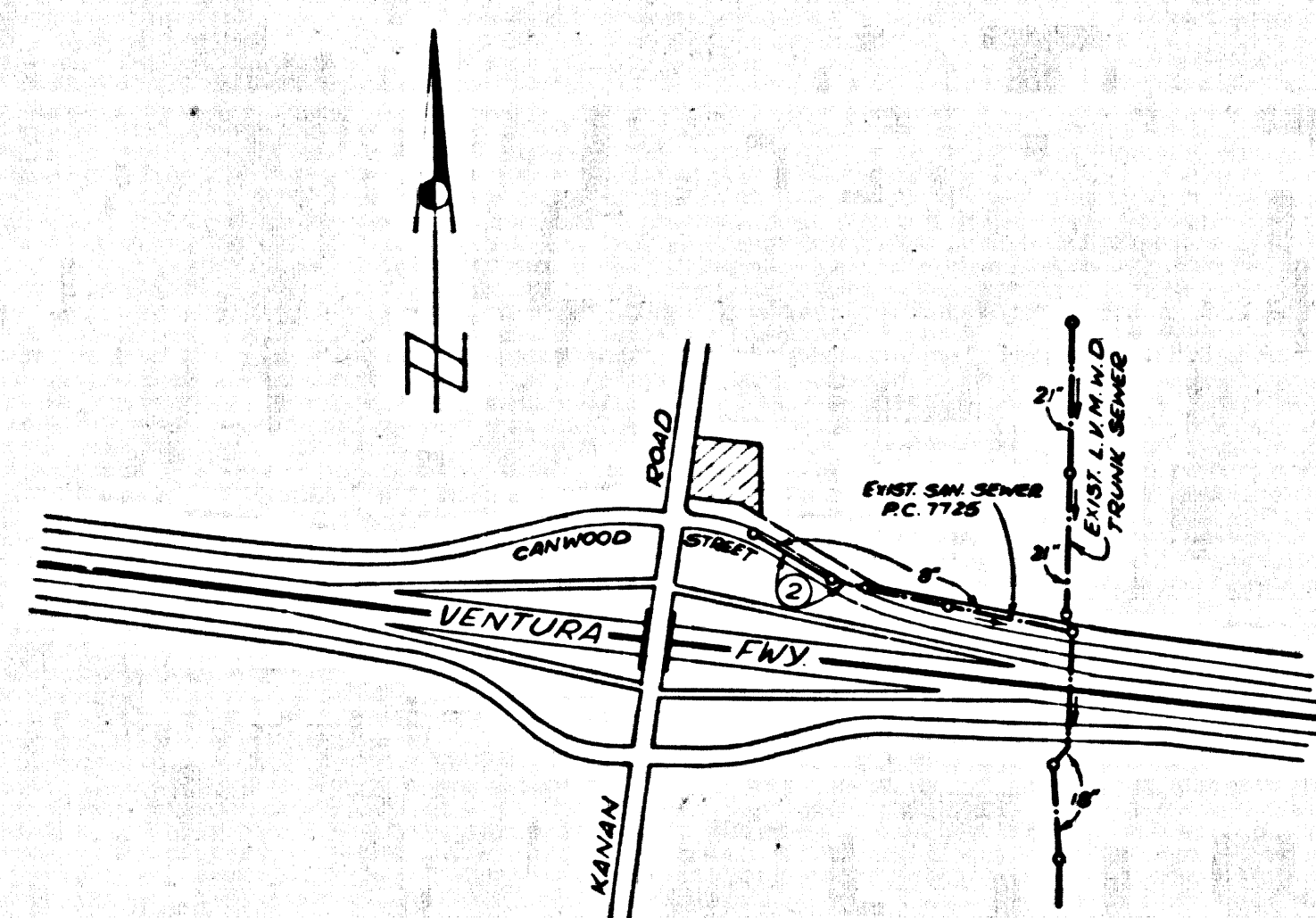
B.M. BY 7552 ELEV. 894.107
 RDBM TAG 1 FT N. B.C.R. @ NE COR. KANAN RD.
 6 CANWOOD ST. 60 FT. N. 6 40 FT. E. C.I. INT. 250 FT. N.
 BRIDGE 53-945 OVER VENTURA Fwy.
 MALIBU QUAD. 19 65

ENGINEER'S NOTE TO CONTRACTOR

THE EXISTENCE AND LOCATION OF ANY UNDERGROUND UTILITIES, PIPES OR AND STRUCTURES SHOWN ON THIS PLAN WERE OBTAINED BY A SEARCH OF AVAILABLE RECORDS. TO THE BEST OF OUR KNOWLEDGE THERE ARE NO EXISTING UTILITIES EXCEPT AS SHOWN ON THIS PLAN. THE CONTRACTOR SHALL ASCERTAIN THE TRUE LOCATION OF ANY UNDERGROUND UTILITIES AND SHALL BE RESPONSIBLE FOR DAMAGE TO ANY PUBLIC OR PRIVATE UTILITIES SHOWN OR NOT SHOWN HEREOF.

THE FOLLOWING COUNTY ENGINEER STANDARD PLANS APPLY TO THIS PROJECT:

Legend	S-1
Min. Public Safety Requirements	S-2
Brick Manhole	S-3
Non Reinforced Precast Concrete Manhole	S-36
Manhole Frame and Cover	S-35
Manhole Slag	S-17
Bedding for Sewer Pipe	S-21
Cradling and Encasement	S-23
We or Tee Support	S-25
Allowable Trench Widths	S-38



P.C. 8642
 INDEX MAP
 SCALE: 1"=100'

CALABASAS BLDG. DIST. NO. 9.1

- PROVIDE STAKES ON THE PROPERTY LINE OR PROPERTY LINES PRODUCED AT RIGHT ANGLES TO THE SEWER LINE AT THE CENTER LINE OF EACH MANHOLE.
- NO REPRESENTATIVE OF THE COUNTY ENGINEER WILL SURVEY OR LAY OUT ANY PORTION OF THE WORK.
- THE PRIVATE ENGINEER SHALL FURNISH THE COUNTY ENGINEER WITH GRADE SHEETS AND STATIONING FOR ALL HOUSE LATERALS AND "T" OR "Y" BRANCHES AND SHALL PROVIDE STAKES FOR THEM AT THEIR PROPER LOCATIONS WITH STATUING PLAINLY MARKED. ALL HOUSE LATERALS SHALL BE CONSTRUCTED IN A STRAIGHT ALIGNMENT AT RIGHT ANGLES FROM THE MAIN LINE SEWER EXCEPT AS SHOWN ON THE PLANS. HOUSE LATERALS FROM CHIMNEYS SHALL NOT HAVE AN ANGLE OF LESS THAN 45° WITH THE MAIN LINE SEWER. ANY CHANGE IN ALIGNMENT SHALL BE REQUESTED IN WRITING BY THE PRIVATE ENGINEER.
- THE PRIVATE ENGINEER SHALL FURNISH THE HOUSE LATERAL DEPTH AT THE PROPERTY LINE BELOW THE TOP OF CURB ELEVATION FOR EACH HOUSE LATERAL ON THE GRADE SHEET.
- NO REVISIONS SHALL BE MADE IN THESE PLANS WITHOUT THE APPROVAL OF THE COUNTY ENGINEER.
- THE CONTRACTOR SHALL NOTIFY THE CONSTRUCTION DIVISION BY TELEPHONE, MADISON 9-4747, EXT. 81381, AT LEAST TWENTY-FOUR HOURS BEFORE STARTING ANY WORK UNDER THIS CONTRACT.
- ALL STRUCTURES SHALL BE EITHER BRICK MANHOLES PER S-3 OR PRECAST CONCRETE MANHOLES PER S-36, EXCEPT AS NOTED.
- USE STANDARD MANHOLE FRAMES AND COVERS, S-38, EXCEPT AS NOTED.
- MANHOLE TOPS IN IMPROVED RIGHTS-OF-WAY TO BE LEVEL WITH FINISHED GRADE.
- USE EXTRA STRENGTH PIPE. ALL PIPE IS STANDARD DEPTH EXCEPT AS NOTED.
- INTERFED CLAY PIPE JOINTS SHALL BE TYPE "D", OR "D" PER STANDARD SPECIFICATIONS SECTION 306-2
- IF A POWER POLE IS WITHIN THREE FEET OF THE SEWER, THE SEWER SHALL BE ENCASED, PER S-23, TWO FEET ON EACH SIDE FROM THE POINT OF INTERFERENCE.
- IF DURING THE COURSE OF CONSTRUCTION IT IS DETERMINED THAT THERE IS LESS THAN FOUR FEET OF COVER OVER THE TOP OF A MAIN LINE OR HOUSE LATERAL V.C.P. SEWER WHICH IS NOT INDICATED ON THE PLANS, THE PIPE SHALL BE ENCASED PER S-23, UNLESS OTHERWISE APPROVED BY THE COUNTY ENGINEER.
- HOUSE LATERALS TO BE CONSTRUCTED WITH WEIRS AT PROPERTY LINE 6 FEET BELOW GRADE OF E OF STREET
- REPAIR/REPLACE ALL TRENCHES WITHIN PAVED AREAS TO MEET L.A. COUNTY ROAD DEPT. OR CALIFORNIA STATE HIGHWAY REQUIREMENTS IN ACCORDANCE WITH PERMITS.
- REFER TO SECTION 7-10.1.1 OF STANDARD SPECIFICATIONS, RESURFACING SAFETY COURSES
- THE CONTRACTOR SHALL NOTIFY THE L.M.W.D. 48 HRS. PRIOR TO COMMENCING WORK PHONE: (213) 800-4110
- BEFORE ANY EXCAVATION THE CONTRACTOR SHALL NOTIFY THE PACIFIC TELEPHONE COMPANY. PHONE: (213) 781-0000 AND THE COUNCIL NEWMARK, 48 HRS. PRIOR TO COMMENCING WORK.
- ALL JOINTS BETWEEN CAST IRON PIPE AND INTERFED CLAY PIPE SHALL BE MADE WITH A RUBBER SLEEVE JOINT, TYPE "C" OR "D", (WITH BRASSING IF NECESSARY) PER STANDARD SPECIFICATIONS, SECTION 306-2
- SEWERS TO BE AIR PRESSURE TESTED FOR LEAKAGE PER SECTION 306-2.3.7.C, OF THE STANDARD SPECIFICATIONS AND SPECIAL PROVISIONS.
- WYE OR TEE BRANCHES MAY BE USED FOR CONNECTIONS TO MAINLINE SEWERS, EXCEPT AS NOTED.

PROFILE ALIGNMENT AND GRADE OF
SANITARY SEWERS P.C. 8642
 TO BE CONSTRUCTED IN PAGE 1

GANWOOD STREET No. II
 PRIVATE CONTRACT NO. 8642

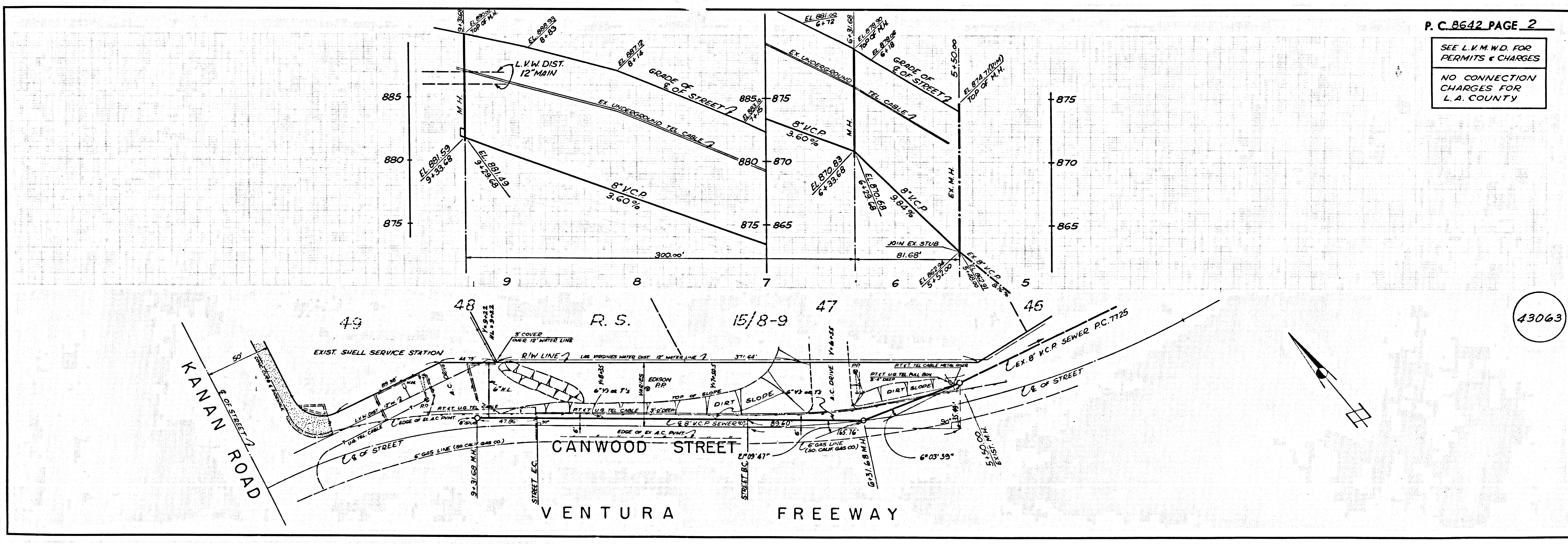
W.S. 90
 1 SHEETS; 2 PAGES
 SCALE: VERT. 1"=4' AUGUST, 1971
 HORIZ. 1"=40'
 PREPARED IN THE OFFICES OF
HOLM, TAIT & ASSOCIATES
 100 WEST 21ST STREET, LOS ANGELES, CALIF. 90057
 REG. C. E. NO. 14940
 FOR LEGEND SEE PLAN NO. S-1

NOTE:
 GRADES TO WHICH THIS IMPROVEMENT IS TO BE CONSTRUCTED ARE SHOWN ON PLANS AND PROFILES. GRADE POINTS FOR TOP OF CURB, CENTER LINE OF STREETS, OR CENTER LINE OF ALLEYS ARE SHOWN BY CIRCLES ON PROFILES. AT ALL POINTS BETWEEN DESIGNATED POINTS THE GRADE SHALL BE ESTABLISHED SO AS TO CONFORM TO A STRAIGHT LINE DRAWN BETWEEN SAID DESIGNATED POINTS. ELEVATIONS ARE IN FEET ABOVE U.S. & C.S. MEAN LEVEL DATUM OF 1929.
 THIS DRAWING AND THE DATA HEREON ARE HEREBY MADE A PART OF THE SPECIFICATIONS. (970 EDITION)
 WORK SHALL BE CONSTRUCTED ACCORDING TO THE SPECIFICATIONS AND STANDARD SPECIFICATIONS FOR PUBLIC WORKS CONSTRUCTION AND COUNTY ENGINEER SPECIAL PROVISIONS DATED 10/20/70, AS REVISED, AND SHALL BE PROSECUTED UNDER THE PRESENCE OF THE COUNTY ENGINEER.
 BEFORE WORK CAN BE STARTED, THE CONTRACTOR MUST OBTAIN A PERMIT TO EXCAVATE IN COUNTY STREETS FROM THE L.A. COUNTY ROAD DEPT. DISTRICT OFFICE NO. _____ AND PAY A FEE TO THE COUNTY ENGINEER, ROOM 538, COUNTY ENGINEERING BLDG., 100 WEST 21ST STREET, LOS ANGELES, CALIF. 90057. REGIONAL OFFICE, SUFFICIENT TO COVER THE COST OF CONSTRUCTION INSPECTION AND RECORD PLANS.
 APPROVAL OF THIS PLAN BY THE COUNTY OF LOS ANGELES DOES NOT CONSTITUTE A REPRESENTATION AS TO THE ACCURACY OF THE LOCATION OF OR THE EXISTENCE OR NON-EXISTENCE OF ANY UNDERGROUND UTILITY PIPE, OR STRUCTURE WITHIN THE LIMITS OF THIS PROJECT. THIS NOTE APPLIES TO ALL PAGES.
 IF WORK IS TO BE DONE IN A STATE HIGHWAY, A PERMIT MUST BE OBTAINED FROM THE STATE OF CALIFORNIA, DIVISION OF HIGHWAYS, 120 SOUTH SPRING STREET, LOS ANGELES, CALIFORNIA.

COUNTY OF LOS ANGELES, CALIFORNIA
 HARVEY T. BRANDT, COUNTY ENGINEER
 LAS VIRGENES MUNICIPAL WATER DIST.
 APPROVED BY: *Harvey T. Brandt* APPROVED BY: *Harvey T. Brandt*
 REGIONAL ENGINEER (DATE) CHIEF ENGINEER (DATE)
 GENERAL MANAGER

COLLECT CHARGES AS INDICATED

CHECKED BY: *Alan J. ...* 11/2/71
 REG. CE. NO. 17722 (DATE)
 J. N. 0371.10



P. C. 8642 PAGE 2
 SEE L.M.W.D. FOR PERMITS & CHARGES
 NO CONNECTION CHARGES FOR L.A. COUNTY